

# 133 Smith Street

## A Retail Opportunity

Boerum Hill, NY

Southeast corner of Smith and Dean Streets

### Space

Ground Floor 1,500 sf

Basement 895 sf

### Frontage

83 ft wraparound

### Comments

- Prime Corner one block from Bergen Street Station servicing the **F** **G** lines with an annual ridership of 3.5 million
- High foot traffic

### Neighboring Tenants



---

Ryan P. Condren  
+1 212 220 4117  
ryan.condren@am.jll.com

---

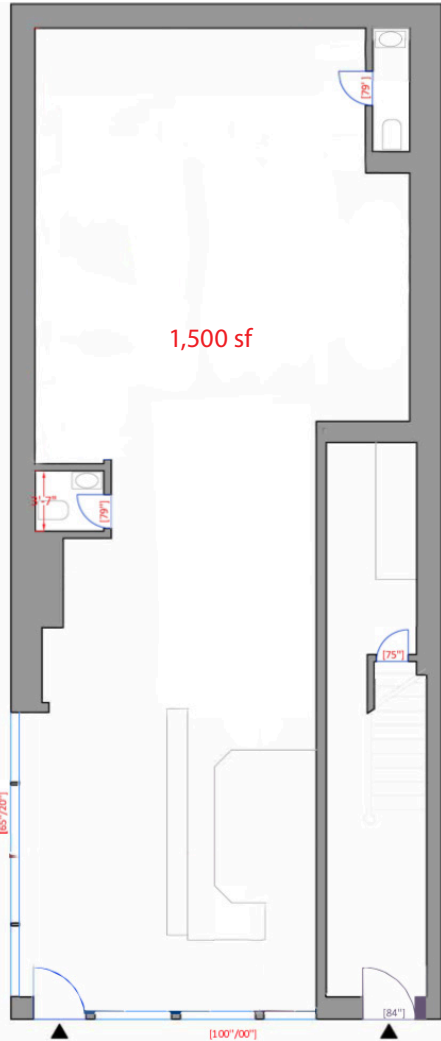
George Danut  
+1 212 220 4121  
george.danut@am.jll.com

---

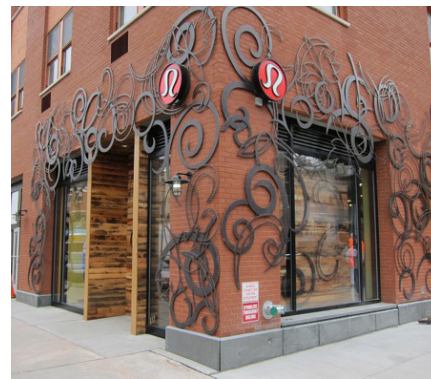
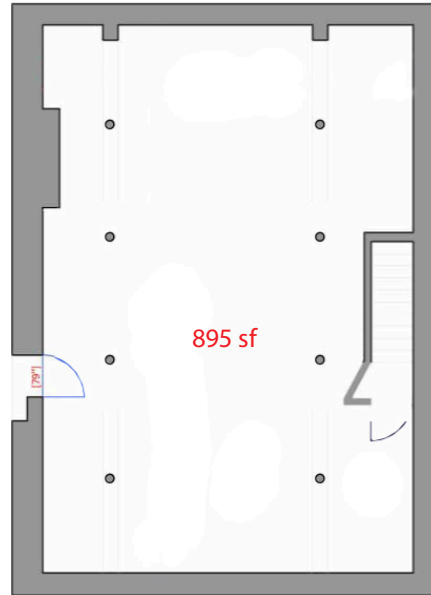


# 133 Smith Street

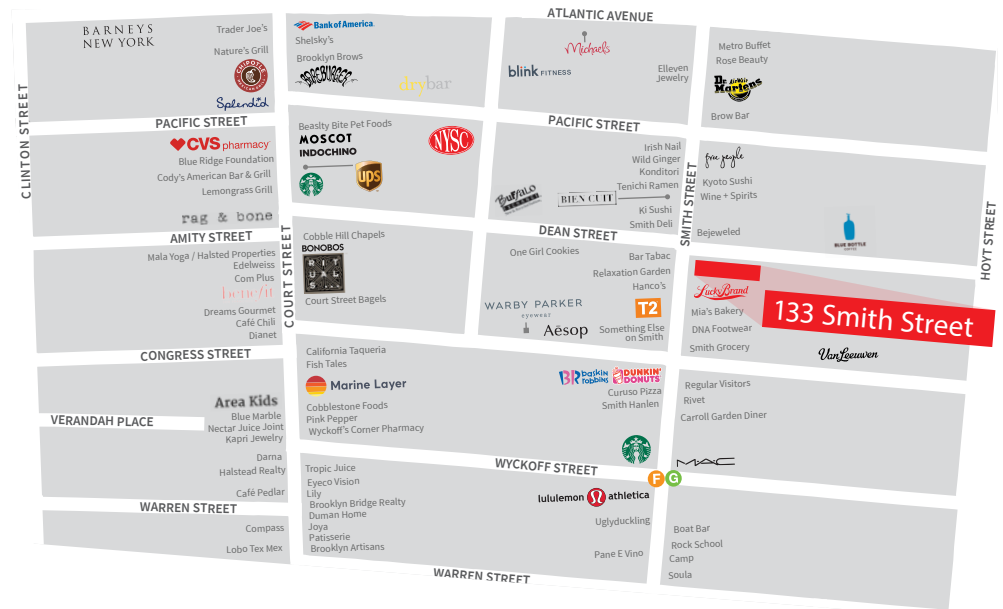
Ground Floor



Basement



Area Map



Jones Lang LaSalle Brokerage, Inc. | 330 Madison Avenue New York, NY 10017  
DISCLAIMER

Although information has been obtained from sources deemed reliable, neither Owner nor JLL makes any guarantees, warranties or representations, express or implied, as to the completeness or accuracy as to the information contained herein. Any projections, opinions, assumptions or estimates used are for example only. There may be differences between projected and actual results, and those differences may be material. The Property may be withdrawn without notice. Neither Owner nor JLL accepts any liability for any loss or damage suffered by any party resulting from reliance on this information. If the recipient of this information has signed a confidentiality agreement regarding this matter, this information is subject to the terms of that agreement. ©2019. Jones Lang LaSalle IP, Inc. All rights reserved.

