

# 1600 CHAMPA

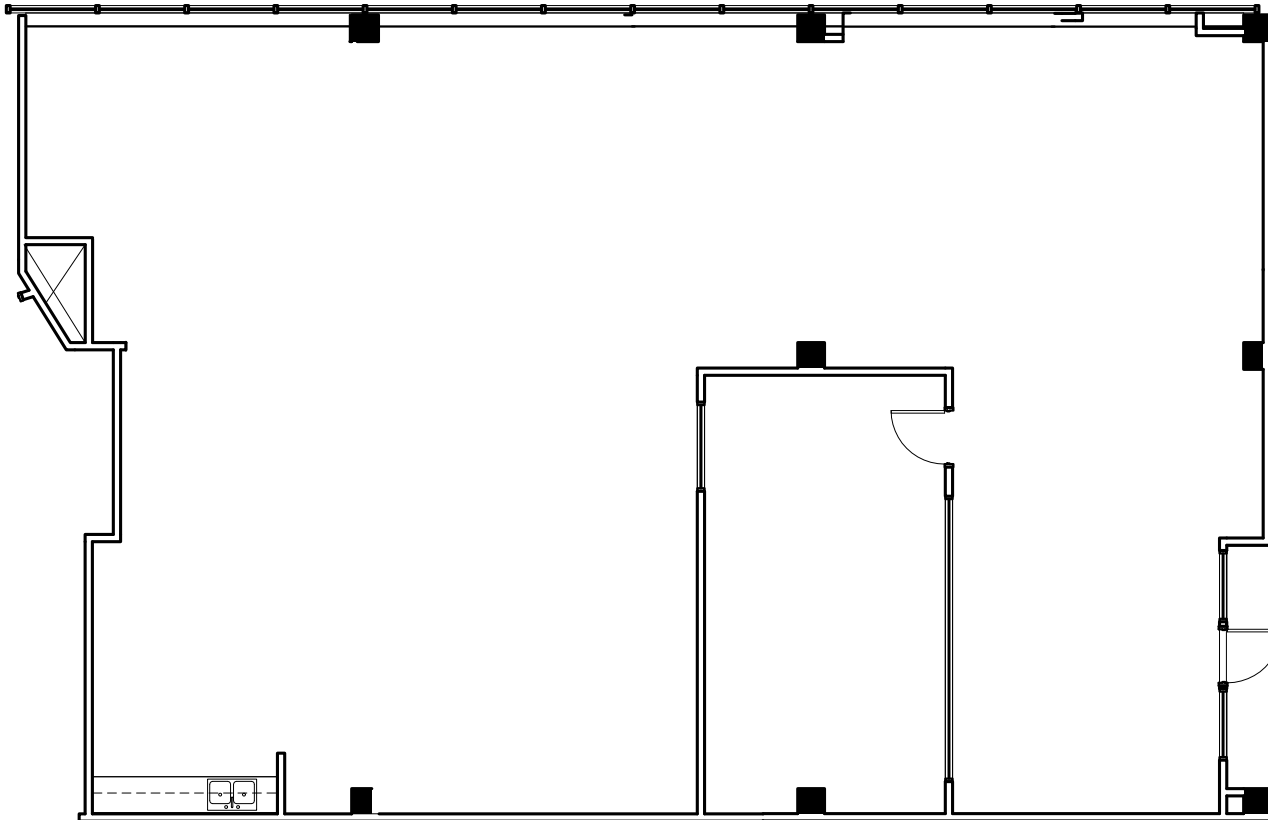
16TH STREET MALL + CHAMPA

## SUITE 300

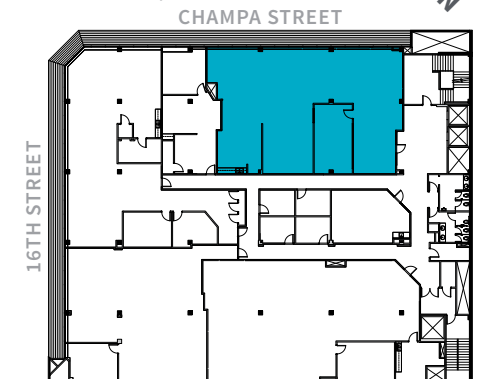
3,883 SF

**NOTES:**

- White-boxed, ready for T.I.'s



**KEY PLAN:**



**FOR FURTHER LEASING INFORMATION, PLEASE CONTACT:**

**JAMES ROUPP** +1 303 217 7947 | james.roupp@am.jll.com  
**ANDY WILLSON** +1 303 217 7980 | andy.willson@am.jll.com  
**BO PITTO** +1 303 260 6529 | bo.pitto@am.jll.com

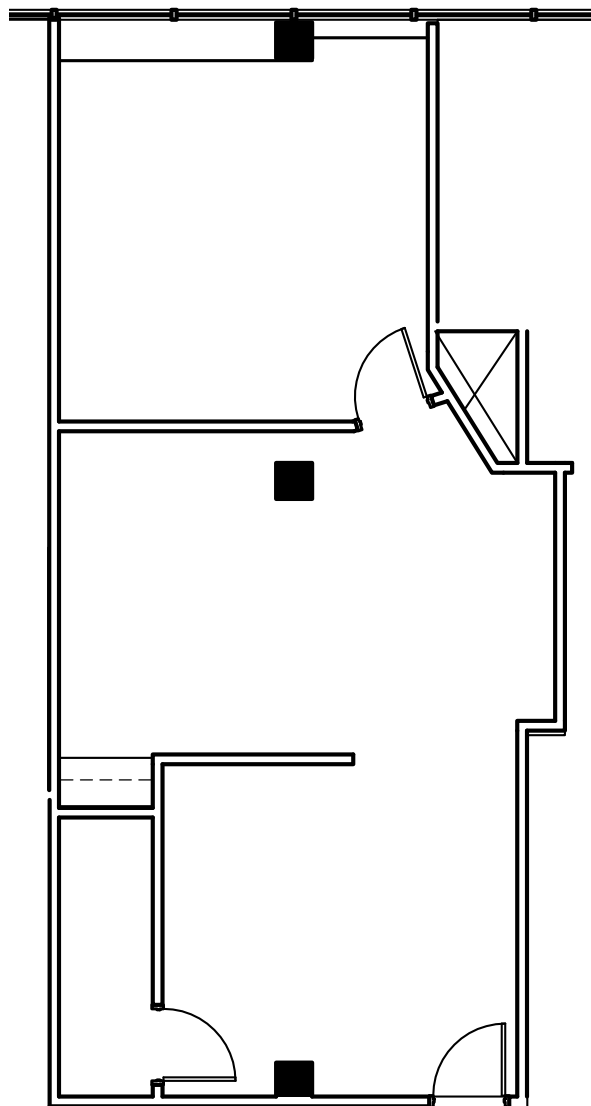
Jones Lang LaSalle Brokerage, Inc.



©2019 Jones Lang LaSalle IP, Inc. All rights reserved. All information contained herein is from sources deemed reliable; however, no representation or warranty is made to the accuracy thereof.

# 1600 CHAMPA

16TH STREET MALL + CHAMPA

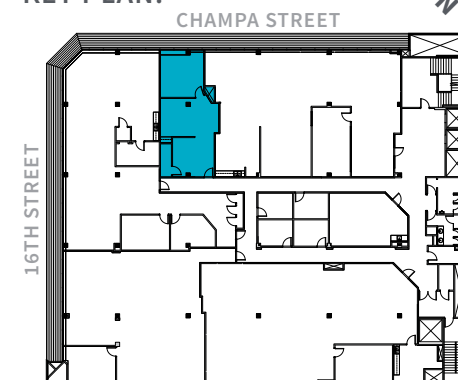


## SUITE 320 787 SF

### NOTES:

- White-boxed, ready for T.I.'s
- Floor-to-ceiling windows
- 6 private restrooms

### KEY PLAN:



### FOR FURTHER LEASING INFORMATION, PLEASE CONTACT:

**JAMES ROUPP** +1 303 217 7947 | [james.roupp@am.jll.com](mailto:james.roupp@am.jll.com)

**ANDY WILLSON** +1 303 217 7980 | [andy.willson@am.jll.com](mailto:andy.willson@am.jll.com)

**BO PITTO** +1 303 260 6529 | [bo.pitto@am.jll.com](mailto:bo.pitto@am.jll.com)

Jones Lang LaSalle Brokerage, Inc.



©2019 Jones Lang LaSalle IP, Inc. All rights reserved. All information contained herein is from sources deemed reliable; however, no representation or warranty is made to the accuracy thereof.

# 1600 CHAMPA

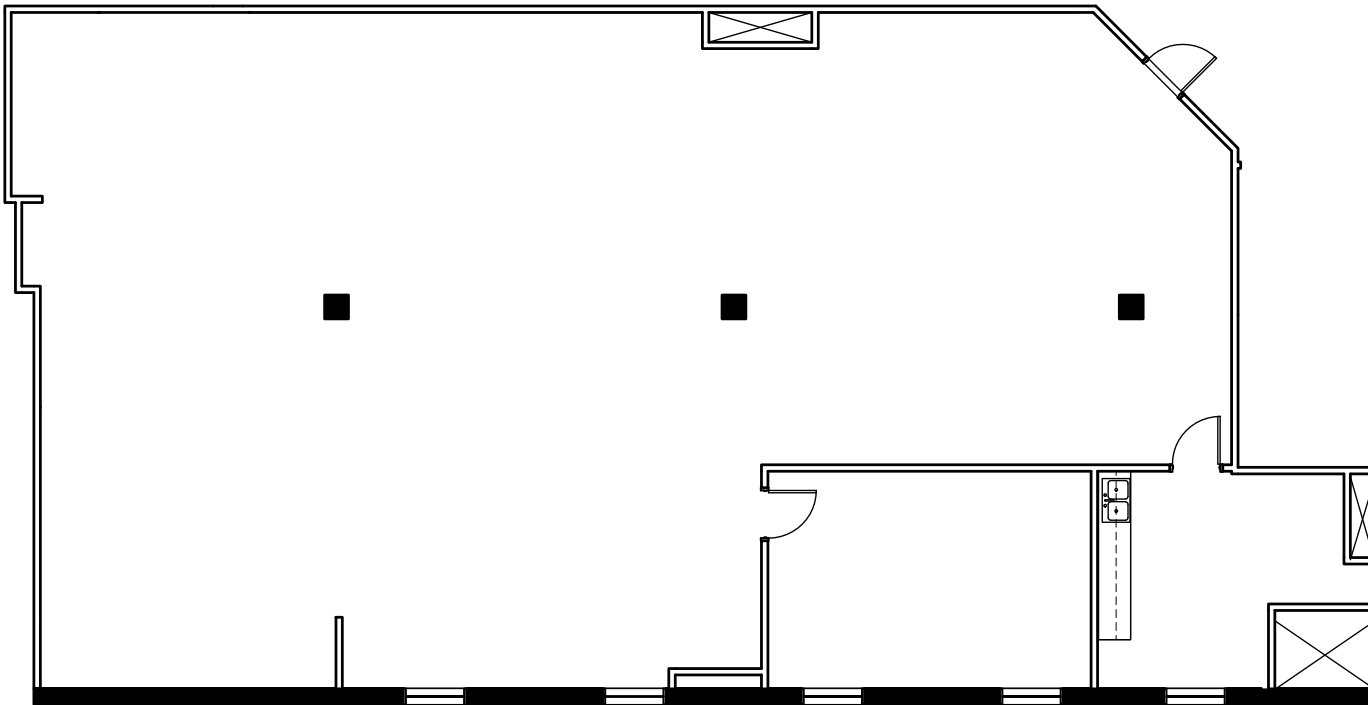
16TH STREET MALL + CHAMPA

## SUITE 360

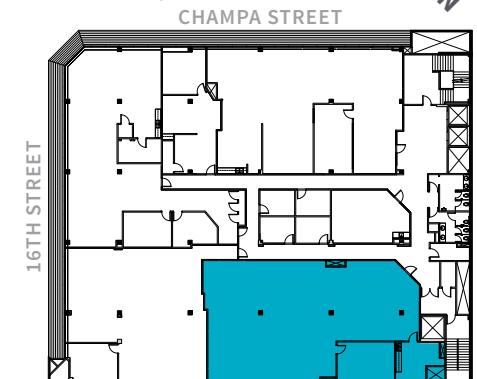
3,143 SF

**NOTES:**

- White-boxed, ready for T.I.'s



**KEY PLAN:**



**FOR FURTHER LEASING INFORMATION, PLEASE CONTACT:**

**JAMES ROUPP** +1 303 217 7947 | james.roupp@am.jll.com  
**ANDY WILLSON** +1 303 217 7980 | andy.willson@am.jll.com  
**BO PITTO** +1 303 260 6529 | bo.pitto@am.jll.com

Jones Lang LaSalle Brokerage, Inc.



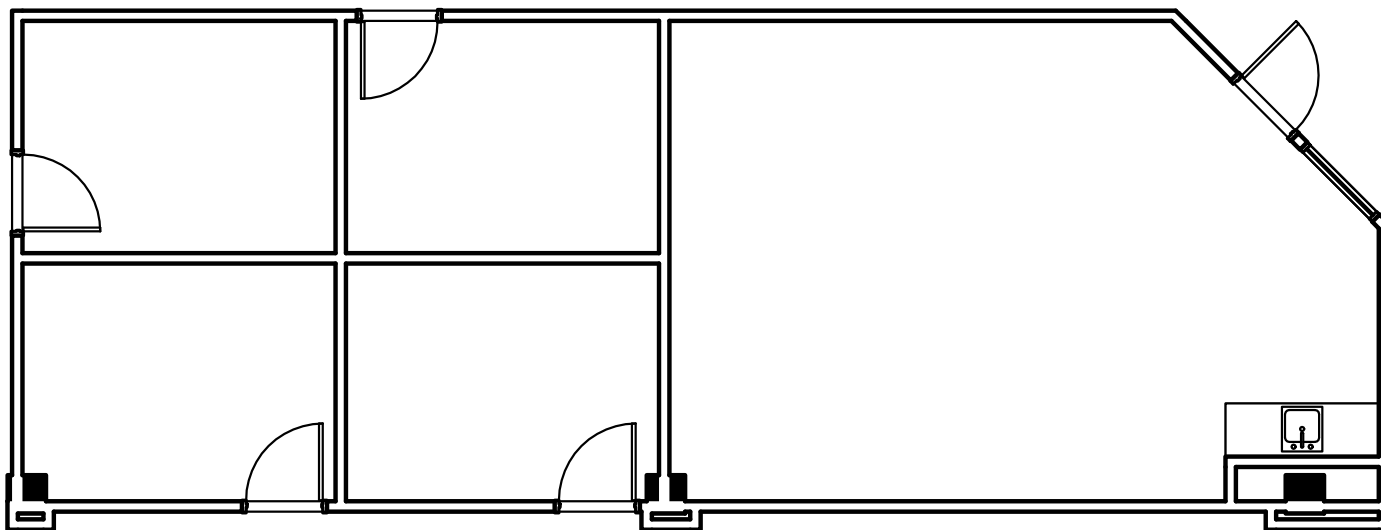
©2019 Jones Lang LaSalle IP, Inc. All rights reserved. All information contained herein is from sources deemed reliable; however, no representation or warranty is made to the accuracy thereof.

# 1600 CHAMPA

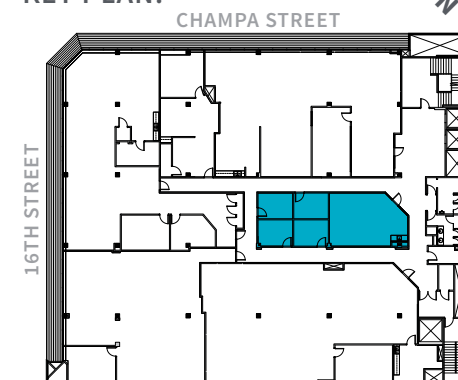
16TH STREET MALL + CHAMPA

## SUITE 399

1,193 SF



KEY PLAN:



FOR FURTHER LEASING INFORMATION, PLEASE CONTACT:

**JAMES ROUPP** +1 303 217 7947 | [james.roupp@am.jll.com](mailto:james.roupp@am.jll.com)

**ANDY WILLSON** +1 303 217 7980 | [andy.willson@am.jll.com](mailto:andy.willson@am.jll.com)

**BO PITTO** +1 303 260 6529 | [bo.pitto@am.jll.com](mailto:bo.pitto@am.jll.com)

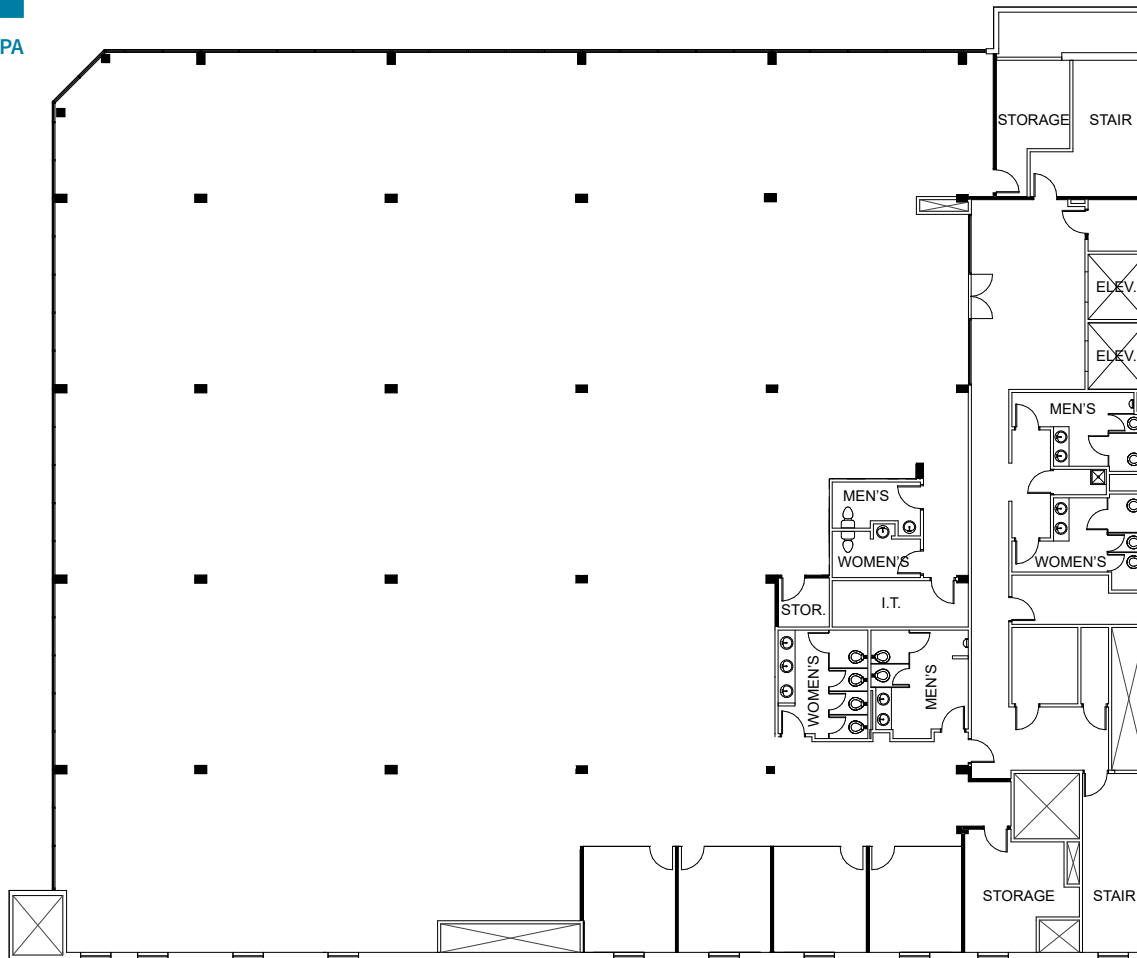
Jones Lang LaSalle Brokerage, Inc.



©2019 Jones Lang LaSalle IP, Inc. All rights reserved. All information contained herein is from sources deemed reliable; however, no representation or warranty is made to the accuracy thereof.

# 1600 CHAMPA

16TH STREET MALL + CHAMPA



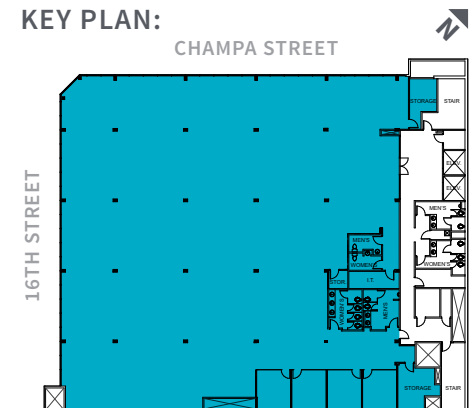
## SUITE 400 16,154 SF

*\*As-built*

### NOTES:

- White-boxed, ready for T.I.'s
- Floor-to-ceiling windows
- 6 private restrooms

### KEY PLAN:



### FOR FURTHER LEASING INFORMATION, PLEASE CONTACT:

**JAMES ROUPP** +1 303 217 7947 | james.roupp@am.jll.com  
**ANDY WILLSON** +1 303 217 7980 | andy.willson@am.jll.com  
**BO PITTO** +1 303 260 6529 | bo.pitto@am.jll.com

Jones Lang LaSalle Brokerage, Inc.



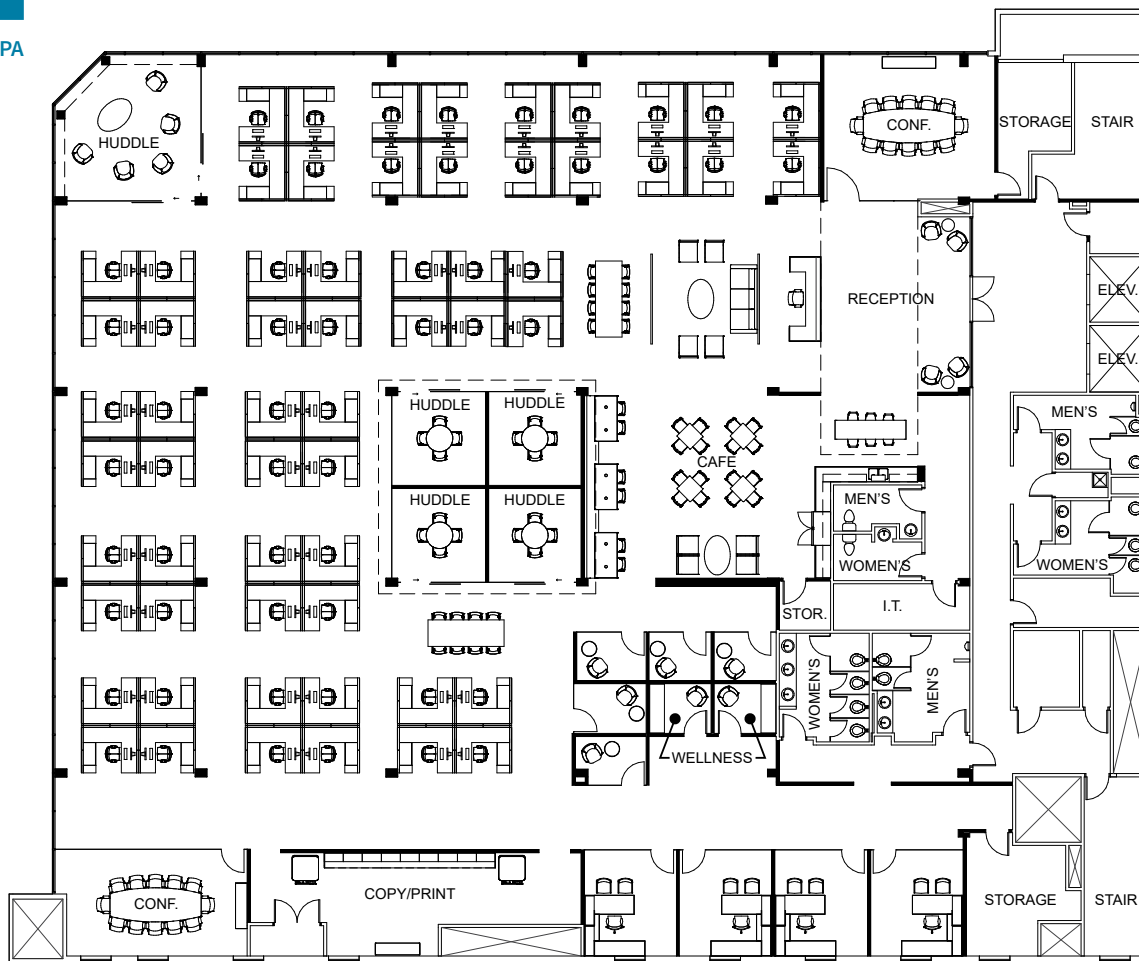
©2019 Jones Lang LaSalle IP, Inc. All rights reserved. All information contained herein is from sources deemed reliable; however, no representation or warranty is made to the accuracy thereof.

# 1600 CHAMPA

16TH STREET MALL + CHAMPA

## SUITE 400 16,154 SF

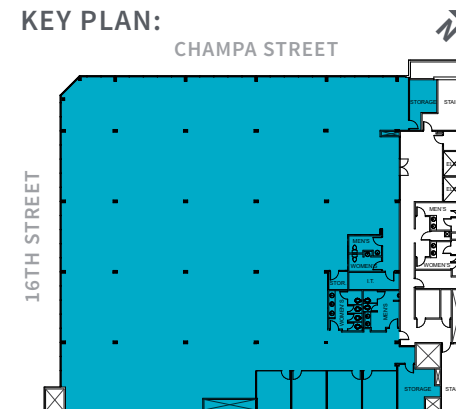
*\*Hypothetical layout*



### NOTES:

- Large reception
- 2 conference rooms
- 4 private offices
- 60 workstations
- 5 huddle rooms
- 5 phone rooms
- 6 private restrooms
- 2 wellness rooms
- Cafe/break area
- Storage/I.T. rooms

### KEY PLAN:



FOR FURTHER LEASING INFORMATION, PLEASE CONTACT:

**JAMES ROUPP** +1 303 217 7947 | james.roupp@am.jll.com

**ANDY WILLSON** +1 303 217 7980 | andy.willson@am.jll.com

**BO PITTO** +1 303 260 6529 | bo.pitto@am.jll.com

Jones Lang LaSalle Brokerage, Inc.



©2019 Jones Lang LaSalle IP, Inc. All rights reserved. All information contained herein is from sources deemed reliable; however, no representation or warranty is made to the accuracy thereof.