

8888 KEYSTONE CROSSING



BUILDING DESCRIPTION

Year completed	1988
Size	18 stories, 335,179 square feet
County	Marion County
Zoning	C4, Community-Regional Commercial District
Renovated	2006

STRUCTURE

Typical floor	21,000 square feet
Ceiling height	Slab-to-slab 12'6" Finished 15' on first floor, 8'6" typical

TRANSPORTATION

Highway	Immediate access to I-465 and Keystone Avenue
Airport	24 miles to Indianapolis International Airport
Parking	1,314 spaces (1,200 garage, 114 surface)

ELEVATORS / DOCK

Passenger	Five
Freight	One
Loading dock	Yes

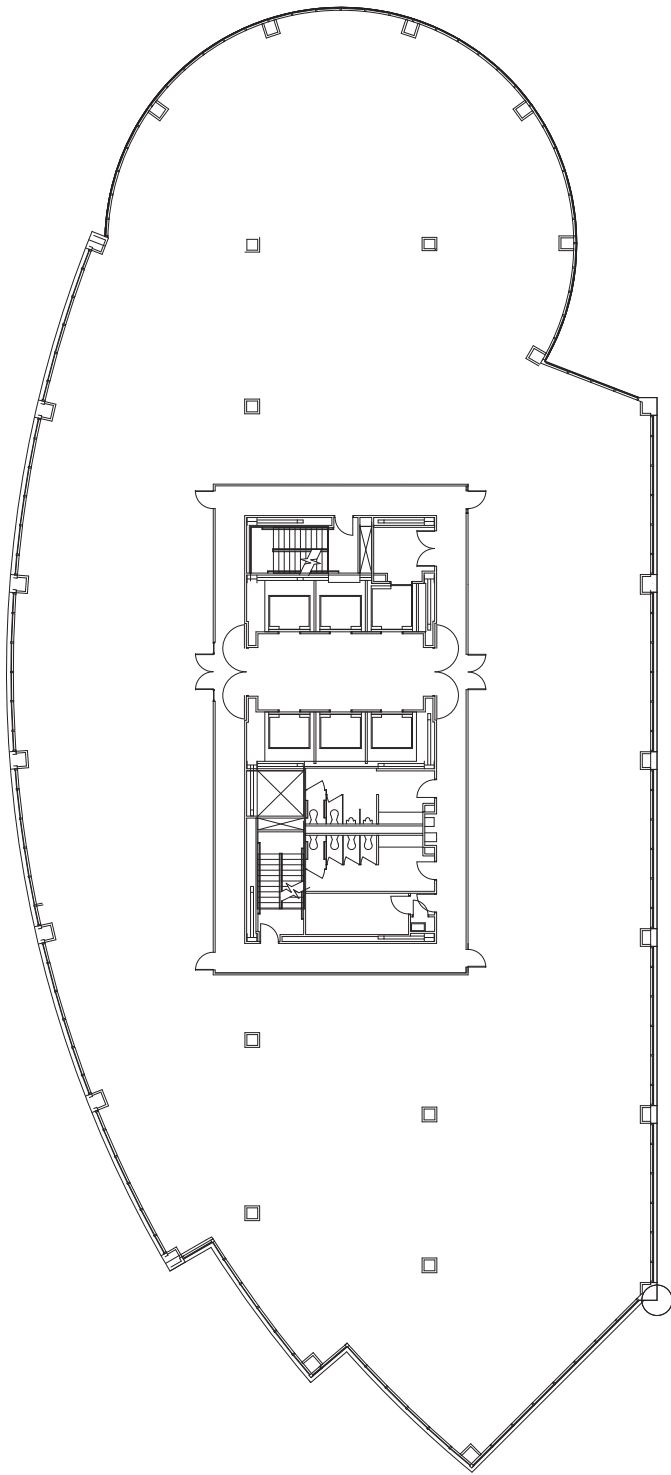
BUILDING SYSTEMS

HVAC	Hydronic heat pump, one zone per 1,000 square feet
Electrical	6 watts per square foot, two panels per floor
Fire / life safety	Simplex Model 4100 U
Security	Honeywell electronic access system
Fiber optics	Fiber "Lit" building Comcast cable

BUILDING TEAM

Owner	M&J Wilkow
Property Manager	M&J Wilkow
Original architect	Wright, Porteous & Lowe/Bonar
Leasing contact	John R. Robinson, JLL +1 317.810.7172 Abby Zito, JLL +1 317.810.7173





8888 Keystone Crossing

Typical floorplan