



Boyette Executive Center sublease

Office/Medical office for sublease

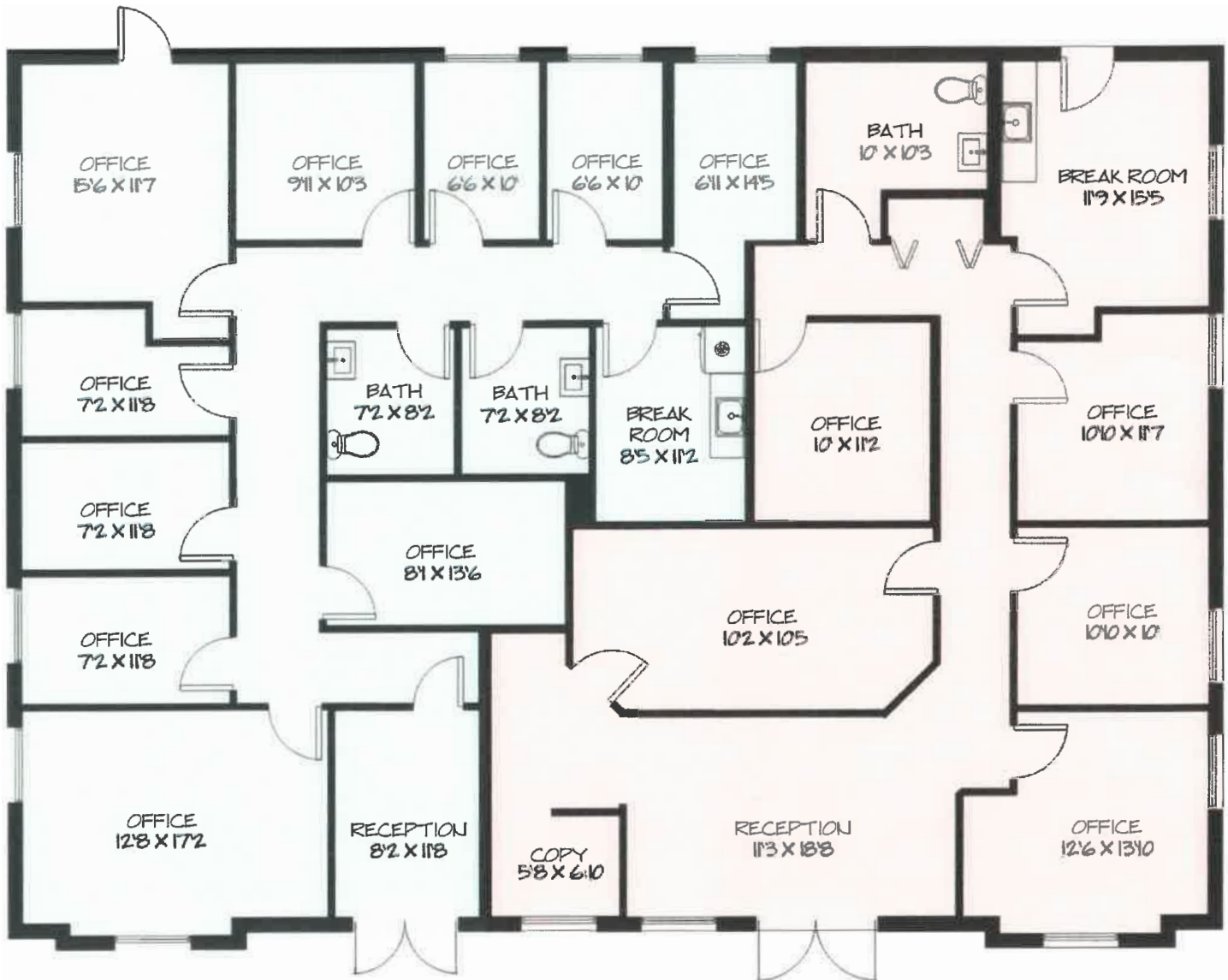
- Full building, 3,415 SF
- Lease expires 05/01/2024
- High quality finishes throughout: glass-double door entries, spacious reception/waiting room, exam rooms, offices, restrooms, nurses stations and large kitchens/break rooms.
- Available for immediate occupancy
- 5.88/1,000 SF parking ratio

**Boyette Executive Center
Building 5**
11910-11912 Boyette Road
Riverview, FL 33569

David Green
+1 813 387 1292
David.Green@am.jll.com

**Boyette Executive Center
Building 5**

**11910-11912 Boyette Road
Riverview, FL 33569**



The above floorplan does not represent an up-to-date build-out. Minor changes apply.

David Green

+1 813 387 1292

David.Green@am.jll.com

DISCLAIMER

Jones Lang LaSalle Brokerage, Inc., a licensed real estate broker

Although information has been obtained from sources deemed reliable, JLL does not make any guarantees, warranties or representations, express or implied, as to the completeness or accuracy as to the information contained herein. Any projections, opinions, assumptions or estimates used are for example only. There may be differences between projected and actual results, and those differences may be material. JLL does not accept any liability for any loss or damage suffered by any party resulting from reliance on this information. If the recipient of this information has signed a confidentiality agreement with JLL regarding this matter, this information is subject to the terms of that agreement. Images courtesy of CoStar. ©2021. Jones Lang LaSalle Brokerage, Inc. All rights reserved.

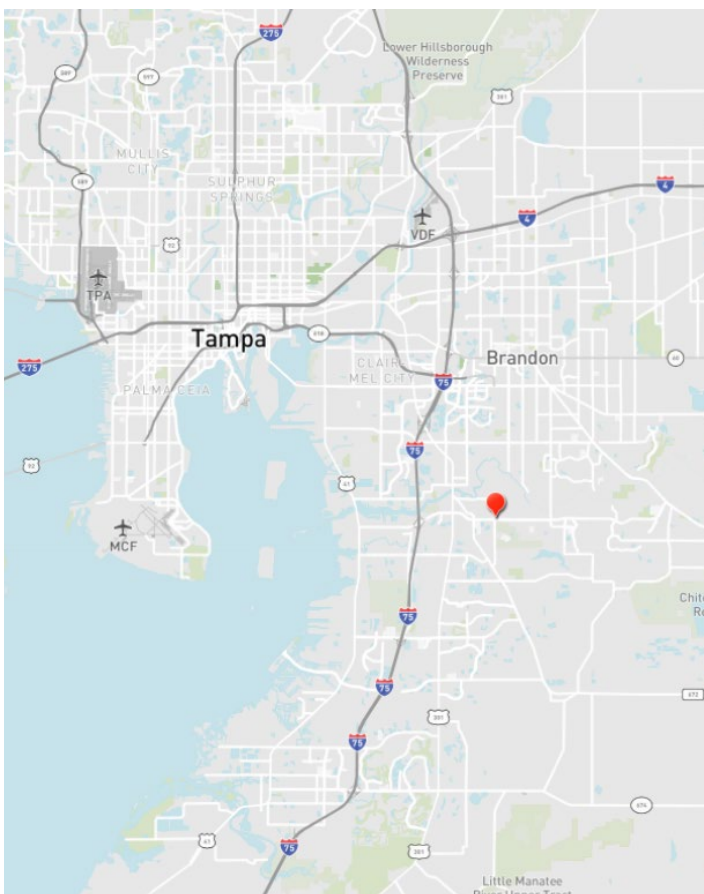
**The outbreak of the COVID-19 virus (novel coronavirus) since the end of January 2020 has resulted in market uncertainty and volatility. While the economic impact of a contagion disease generally arises from the uncertainty and loss of consumer confidence, its impact on real estate values is unknown at this stage. Given the prevailing domestic and global uncertainty arising from the Coronavirus, we recommend that the intended recipients of this information regularly seek our guidance.

Boyette Executive Center
Building 5
11910-11912 Boyette Road
Riverview, FL 33569



Boyette Executive Center Building 5

11910-11912 Boyette Road
Riverview, FL 33569



Demographics

	2 miles	5 miles	10 miles
Population	2 miles	5 miles	10 miles
2010 population:	22,301	152,800	346,794
2021 population	29,358	208,198	458,162
Annual growth 2010-2021	2.9%	3.2%	2.9%
Households (HH)	2 miles	5 miles	10 miles
2010 HHs	8,003	55,562	125,292
2021 HHs	10,574	74,765	166,037
Annual growth 2010-2021	2.0%	2.4%	2.2%
Income	2 miles	5 miles	10 miles
Avg. HH income	\$93,359	\$92,687	\$88,008
Median HH income	\$72,832	\$73,723	\$68,833

David Green
+1 813 387 1292
David.Green@am.jll.com