
16011 COLLEGE

16011 COLLEGE

16011 COLLEGE BOULEVARD, LENEXA KS



SOUTH LAKE

PROPERTY HIGHLIGHTS

\$22.00 per SF Full Service

Competitive tenant improvement allowance available for creative new office finishes

Wide open, efficient floor plans available

4.4/1,000 parking

Centrally located in Johnson County with easy access to I-35 and I-435

5 Minutes from Lenexa City Center and 119th / Black Bob Retail Options

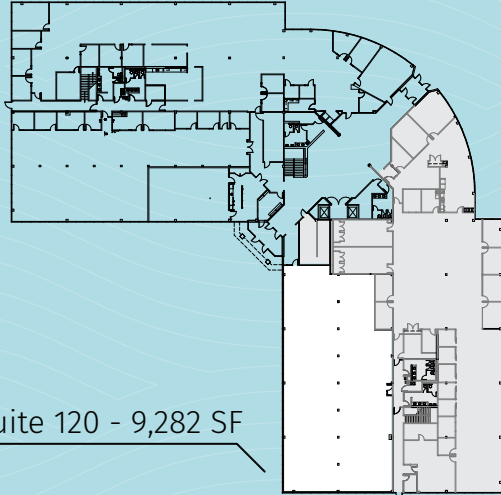
On-site access to trails and lakes

New Ownership with Capital Improvement Plans

Generator available for tenant use



1ST FLOOR 16011 COLLEGE



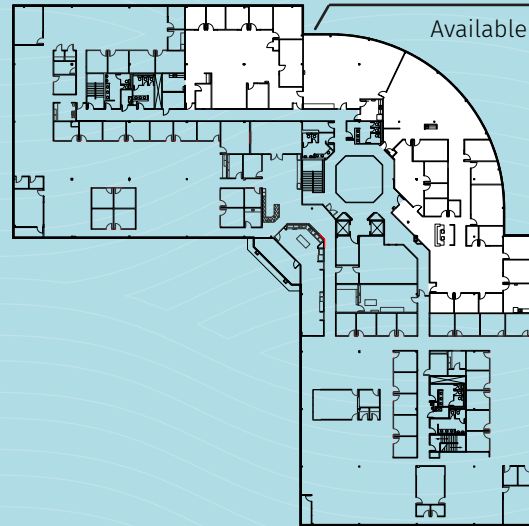
Suite 120 - 9,282 SF

Suite 110 - 13,280 SF

Available 4/1/21

*Suites 110 & 120 available together at 22,562 SF contiguous

Suite 210 - 13,383 SF
Available 5/1/21



2ND FLOOR 16011 COLLEGE

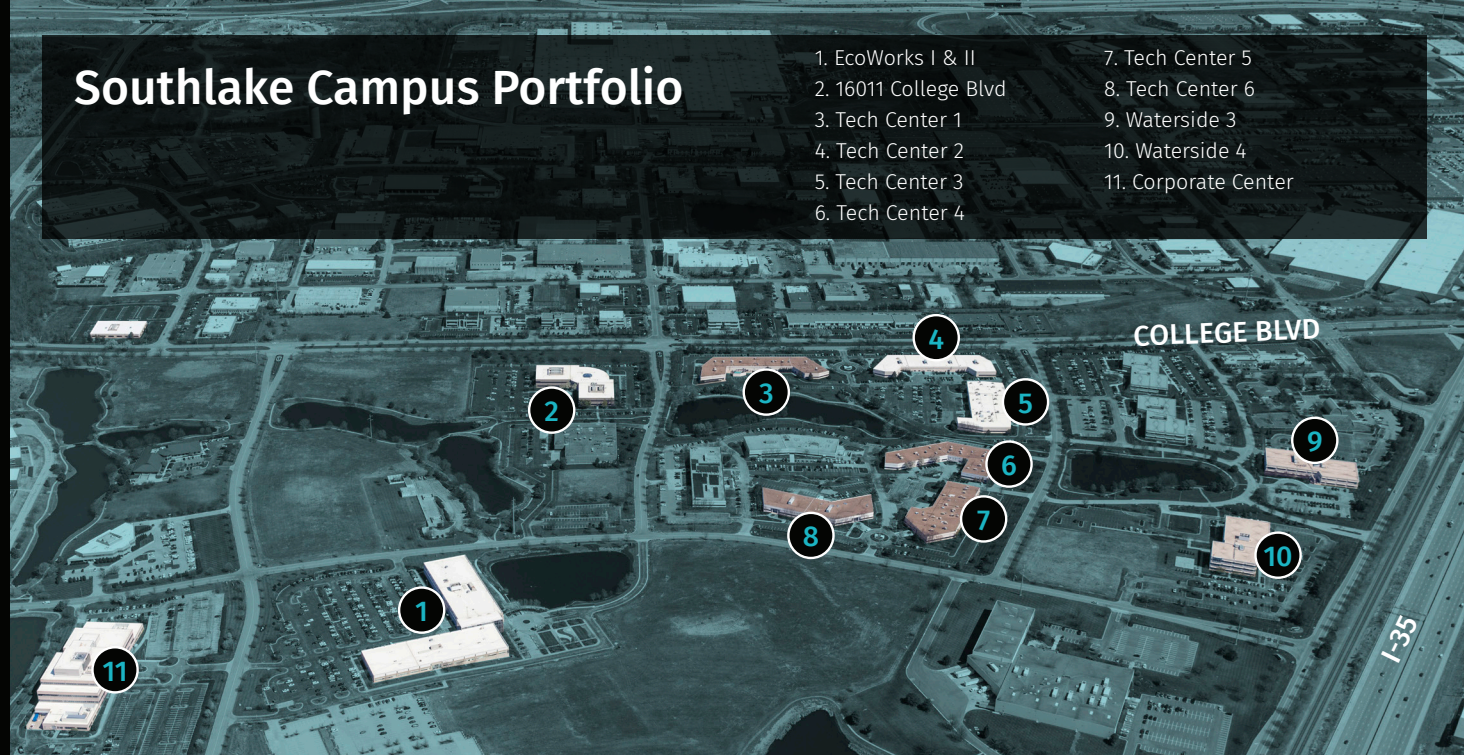
AVAILABLE SPACE

NEW OWNERSHIP

Purchased in January 2019, the Southlake office park now has a dynamic new development company, City + Ventures, as its' owner. City + Ventures' plans for the park include investing in new building amenities, providing Class A common areas and tenant finishes, and developing the interior land sites with complimentary uses for the existing office tenants.

Southlake Campus Portfolio

1. EcoWorks I & II
2. 16011 College Blvd
3. Tech Center 1
4. Tech Center 2
5. Tech Center 3
6. Tech Center 4
7. Tech Center 5
8. Tech Center 6
9. Waterside 3
10. Waterside 4
11. Corporate Center

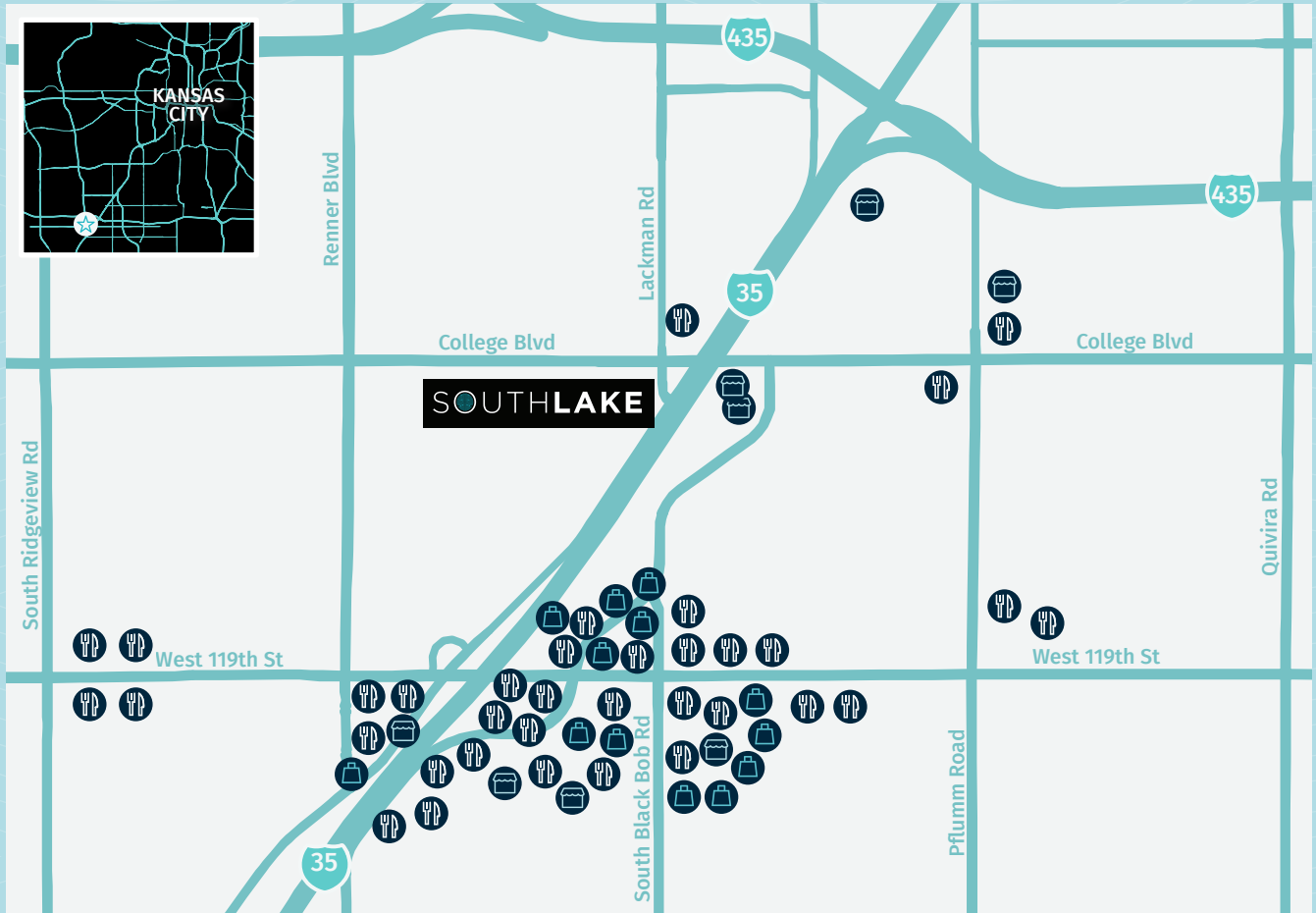




Class A Tenant Finishes



SURROUNDING AMENITIES



Pie Five Pizza
IHOP
Chipotle Mexican Grill
Freddy's Frozen Custard &
Steakburgers
Olive Garden
Zoes Kitchen
Twin Peaks
Muscle Maker Grill
Mr Gyros Greek Food
Chick-fil-A
First Watch

Smashburger
Texas Roadhouse
Joe's Kansas City Bar-B-Que
Johnny's Italian Steakhouse
Cracker Barrell
Steak n' Shake
Schlotzsky's
Houlihan's
Main Event
Starbucks
Jason's Deli

Dunkin' Donuts
Buffalo Wild Wings
Red Lobster
Sake Lounge
SPIN! Pizza
Mi Ranchito
Sierra Grill
Target
Bed Bath and Beyond
Home Depot
GameStop

Cosmic Jump Indoor
Trampoline Park
AMC Studio 28
Whole Foods Market
Ulta Beauty
Marshalls & HomeGoods
Michael's
Dick's Sporting Goods
Pier 1
Ross Dress for Less
Main Event Entertainment
Bass Pro Shops



45+

**RESTAURANTS
& CAFES**



15+

**SHOPPING &
RETAIL**



5+

**ENTERTAINMENT
& HEALTH**

SURROUNDING **AMENITIES**

SOUTHLAKE

For office leasing information:

RJ Trowbridge

+1 913 469 4637

rj.trowbridge@am.jll.com

Jeff Kembel, SIOR

+1 913 469 4604

jeff.kembel@am.jll.com

Patrick Meraz, CCIM

+1 913 469 4622

patrick.meraz@am.jll.com



Although information has been obtained from sources deemed reliable, JLL does not make any guarantees, warranties or representations, express or implied, as to the completeness or accuracy as to the information contained herein. Any projections, opinions, assumptions or estimates used are for example only. There may be differences between projected and actual results, and those differences may be material. JLL does not accept any liability for any loss or damage suffered by any party resulting from reliance on this information. If the recipient of this information has signed a confidentiality agreement with JLL regarding this matter, this information is subject to the terms of that agreement. ©2021 Jones Lang LaSalle Brokerage, Inc. All rights reserved.