

# BELLEVUE TECHNOLOGY CENTER

SE corner of NE 24th St & 156th Ave NE | Bellevue, WA

**FOR LEASE 5,726 - 7,330 RSF**

**NEW TO MARKET**



**Mark Flippo** | +1 425 974 4007 | [mark.flippo@am.jll.com](mailto:mark.flippo@am.jll.com)



## FEATURES

Distinctive nine-building office campus setting

46.6 acre site, 330,508 RSF

Advanced building infrastructure to accommodate the needs of technology companies

Close proximity to all service amenities of Bellevue's Overlake area, downtown Bellevue and Redmond Town Center

Less than one mile from Microsoft World Headquarters

Easy access to SR-520 and I-405

Views of downtown Bellevue, Seattle and the Olympic Mountains

Back up generator available (select suites)

Fiber available (CenturyLink, TW Telecom, & Comcast)

1,055 parking stalls (45% surface & 55% covered)

6 Metro transit stops surrounding the park, including a "Rapid Ride" stop

***Innovative workspace surrounded  
by an environment built to inspire***

## ON-SITE AMENITIES



**State-of-the-art fitness  
facility and locker rooms**



**Grab & go and  
scheduled FOODA**



**Conference facility**



**Great room/collaborative  
area with flat screens  
and wifi**



**Secured on-site  
bike storage**



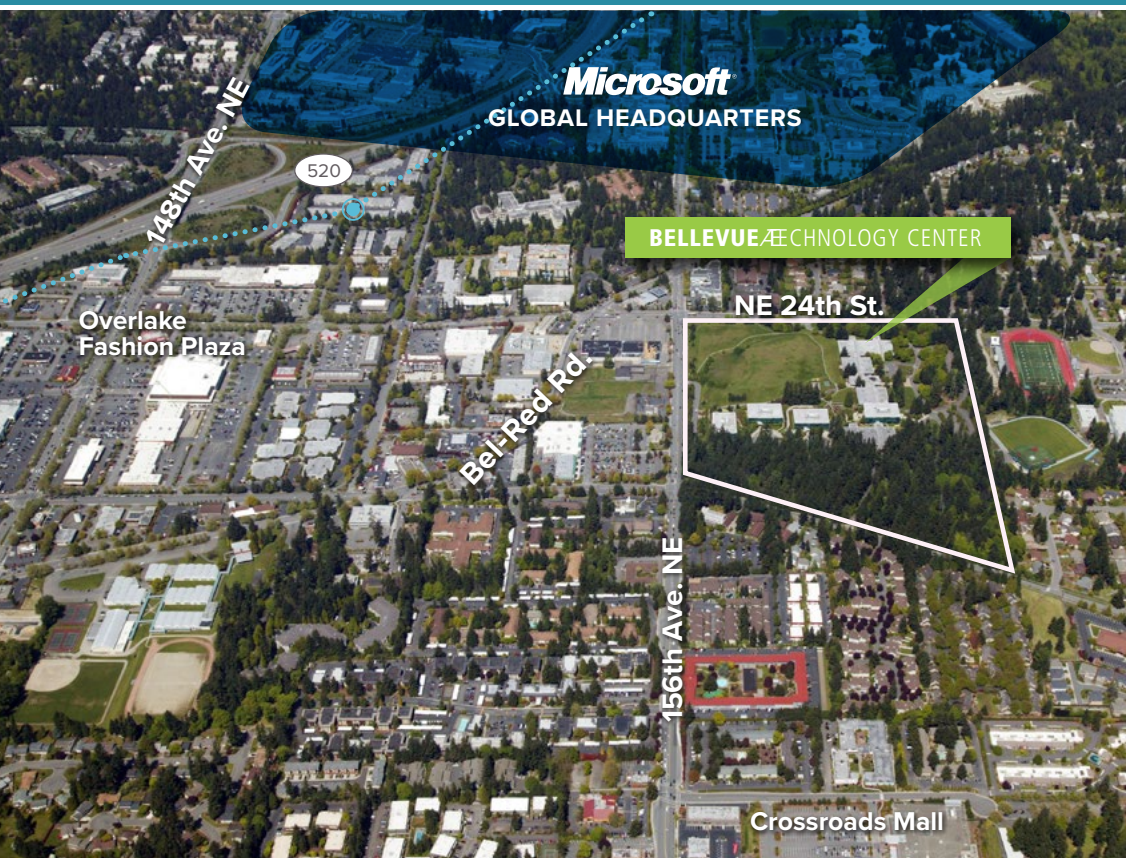
**Sport court and beach  
volleyball court**



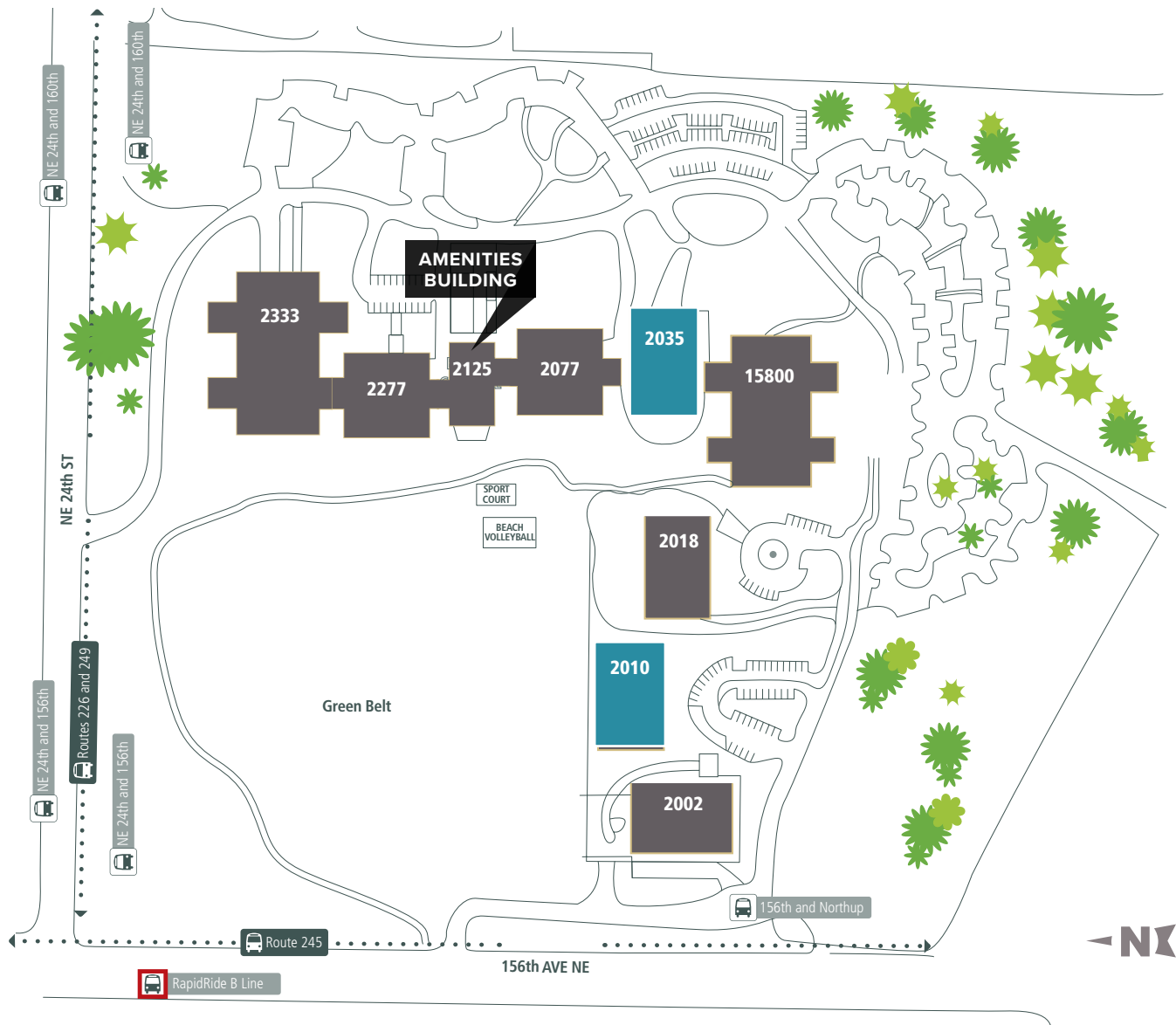
**Landscaped walking/  
jogging trails**



**On-site restaurant  
delivery via Peach, Uber  
Eats and food trucks**



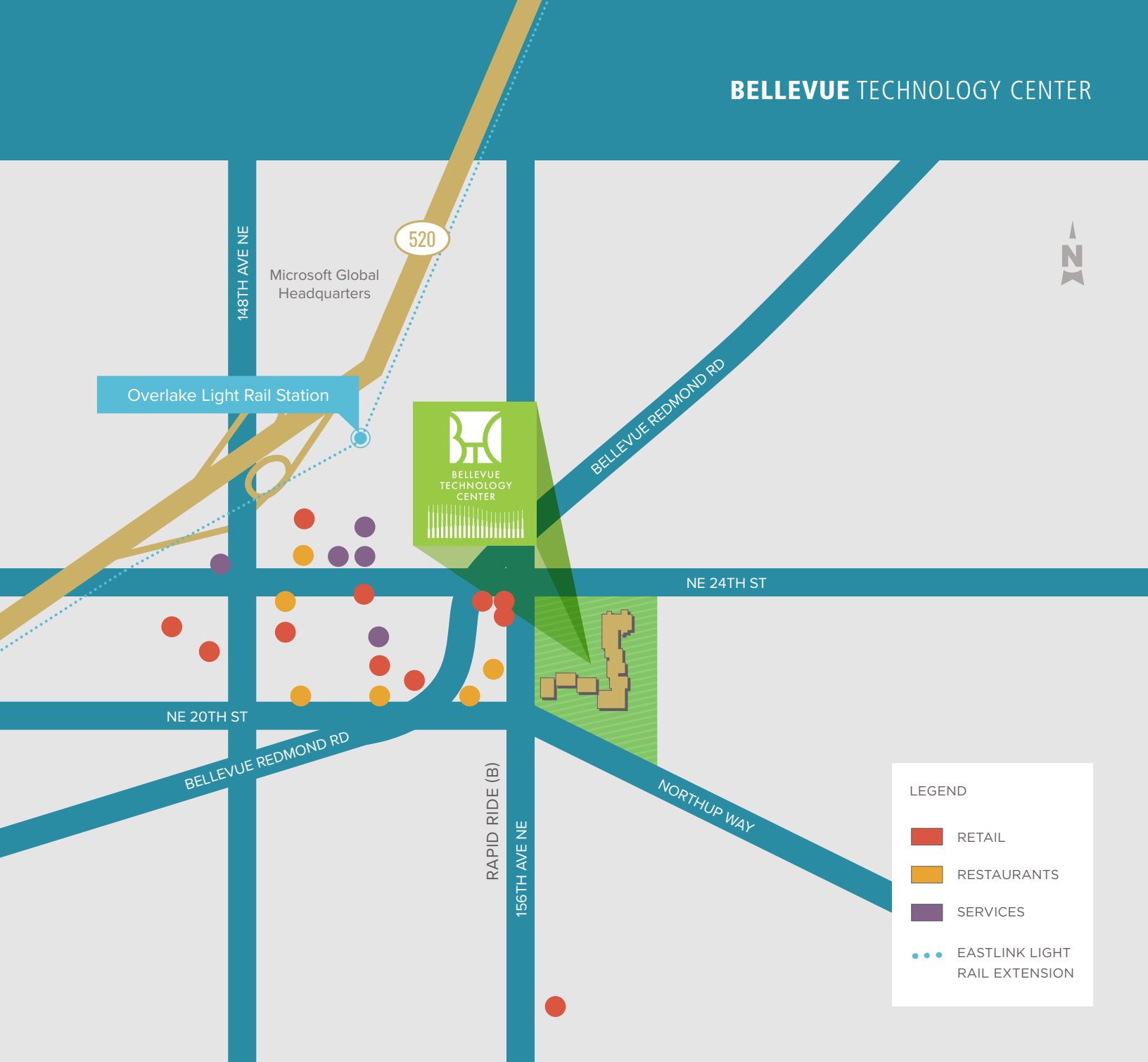
## SITE PLAN



## AVAILABILITIES

BUILDING	AVAILABLE SPACE	ADDRESS	Available
2035	7,330 RSF	2035 158th Ct NE, Bellevue, WA	11/1/20
2035	6,823 RSF	2035 158th Ct NE, Bellevue, WA	11/1/20
2010	5,726 RSF	2010 156th Ave NE, Bellevue, WA	12/1/20

# BELLEVUE TECHNOLOGY CENTER



EXCLUSIVELY OFFERED BY:

Mark Flippo  
+1 425 974 4007  
mark.flippo@am.jll.com



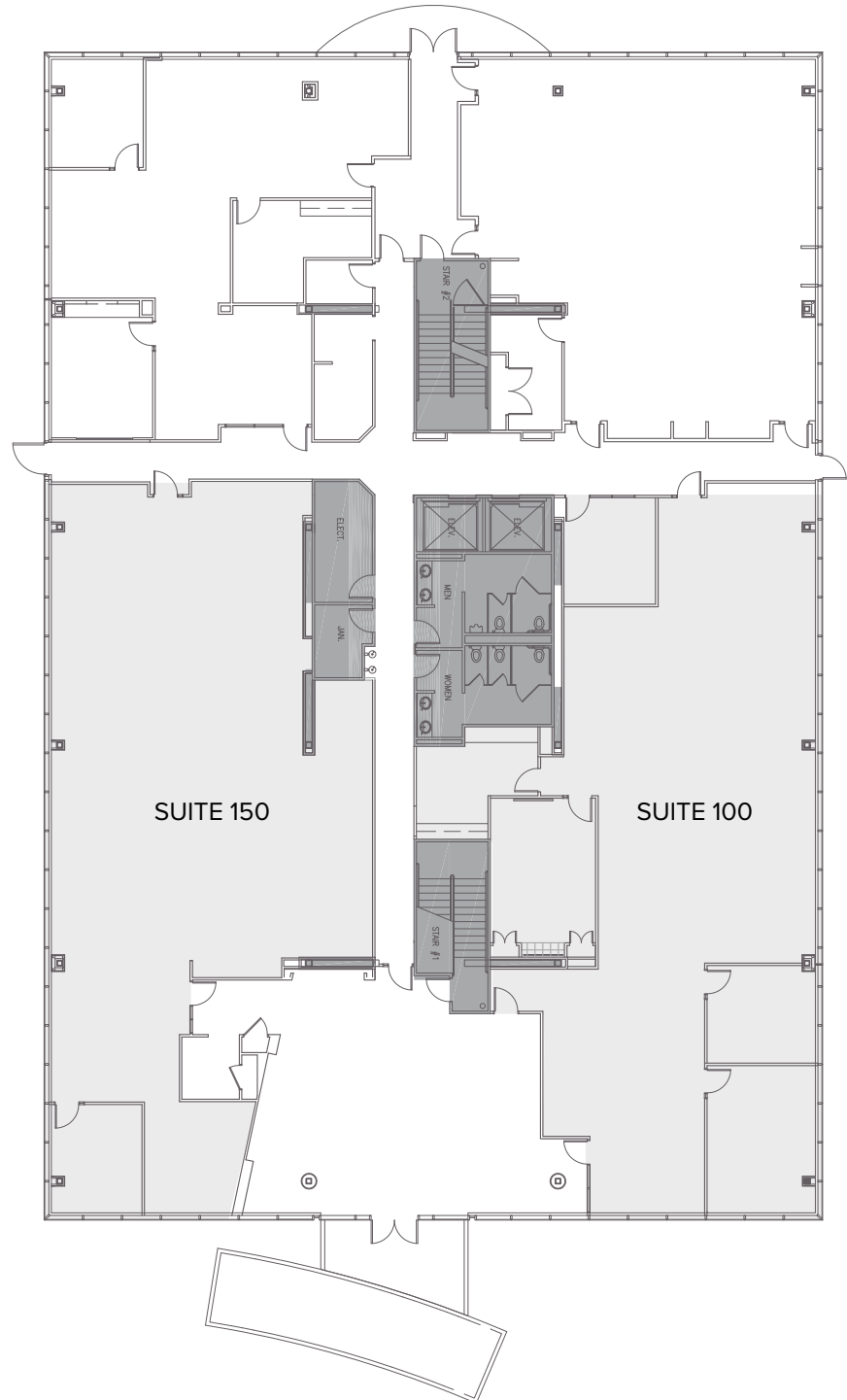
MANAGED BY:



**BUILDING**  
**2035**

**SUITE 100**  
7,330 RSF

**SUITE 150**  
6,823 RSF



BUILDING  
**2010**

SUITE 210  
5,726 RSF

