



3001 MILLER RD | ANN ARBOR, MI





PROPERTY HIGHLIGHTS

Forest Cove's offices boast high ceilings, plenty of natural light, and an unprecedented access to nature. Put your office at the center of a nature preserve without sacrificing location and amenities.



Up to 32,000 SF contiguous of office space available



Located 5 minutes from downtown Ann Arbor



Immediate access to I-94 and I-96 via M-14



Tenants include legal, engineering and tech institutions



Ample parking



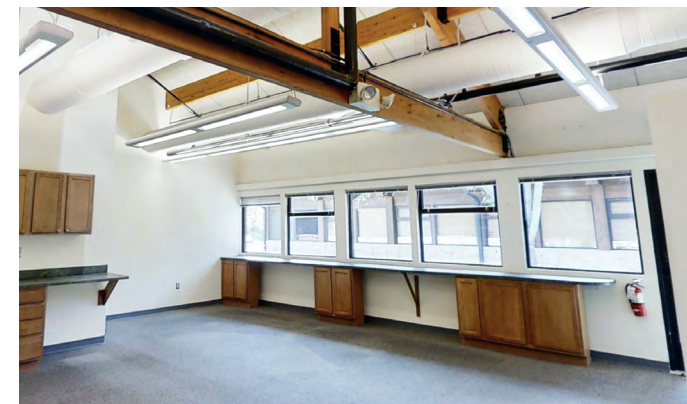
24/7 on-call maintenance

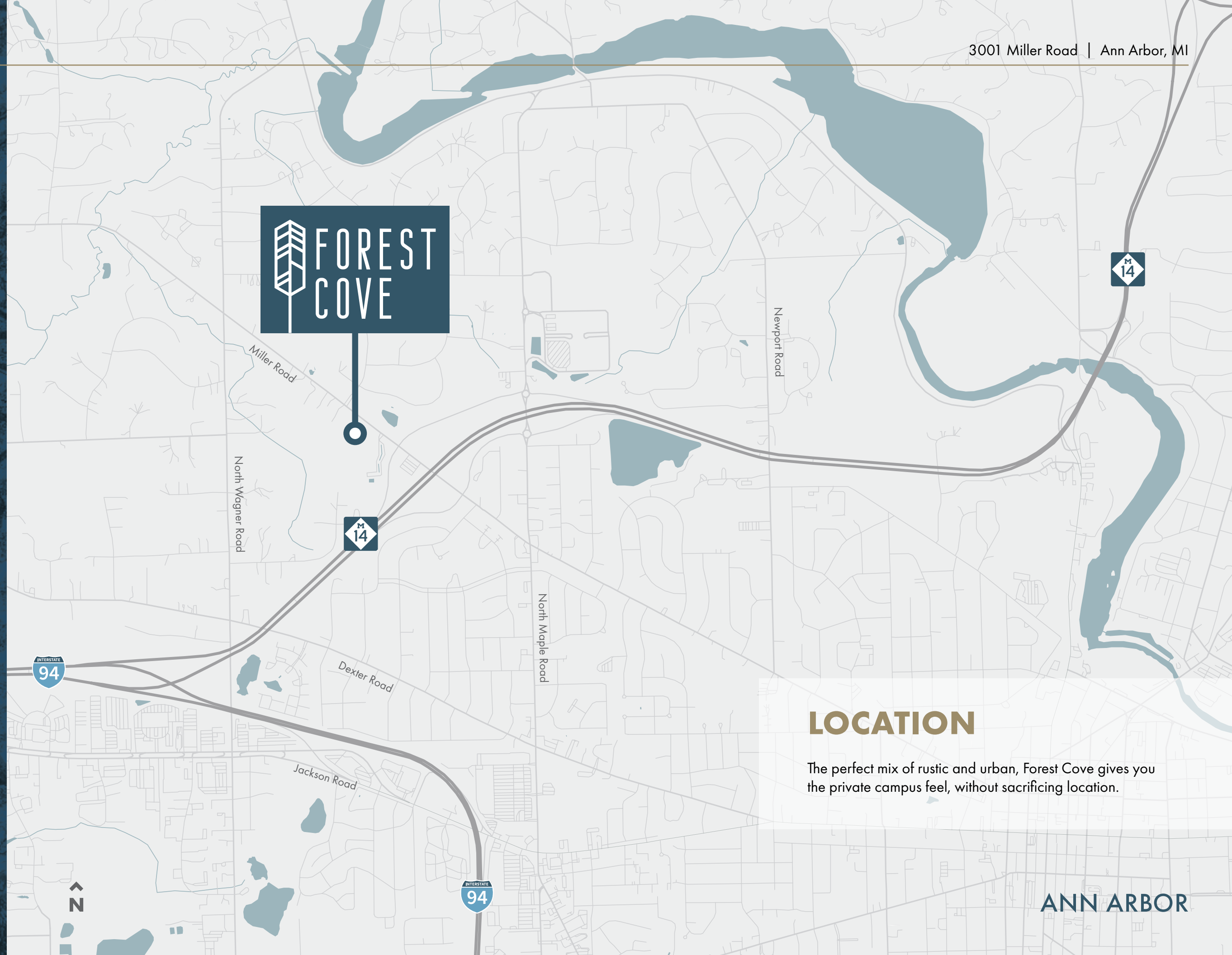


Local property owner and manager



Access to miles of scenic walking trails





 **FOREST
COVE**

LOCATION

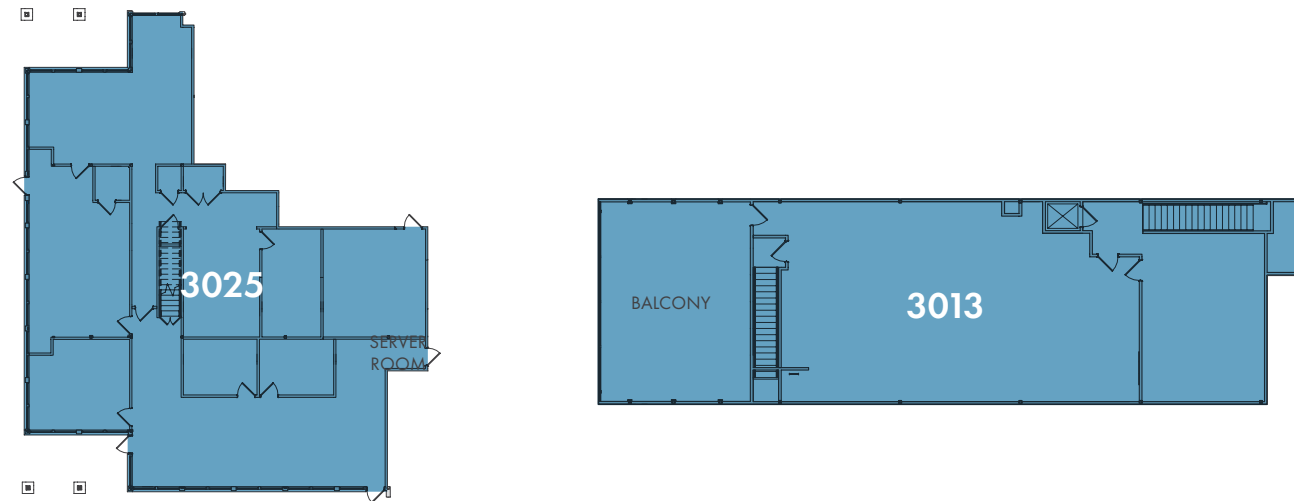
The perfect mix of rustic and urban, Forest Cove gives you the private campus feel, without sacrificing location.

ANN ARBOR

AVAILABILITY

Suite 3013/3025 - 6,911 SF

Endcap two story space with beautiful gabled ceilings, a second floor balcony, and plenty of natural light with the ability to add 345 SF server room.

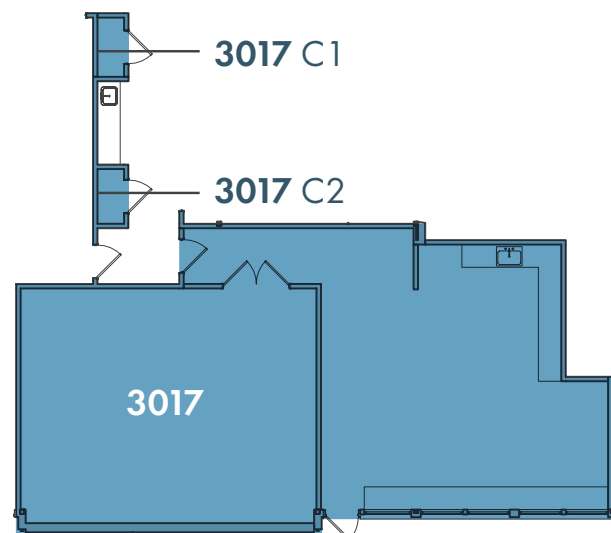


[3013 Virtual Tour](#)

Coming Soon

Suite 3017 - 1,476 SF

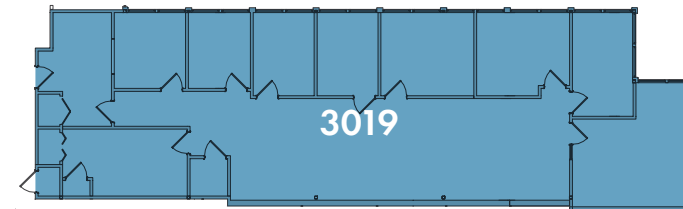
First floor suite with a private entrance and extra storage in the adjoining corridor.



AVAILABILITY

Suite 3019 - 2,717 SF

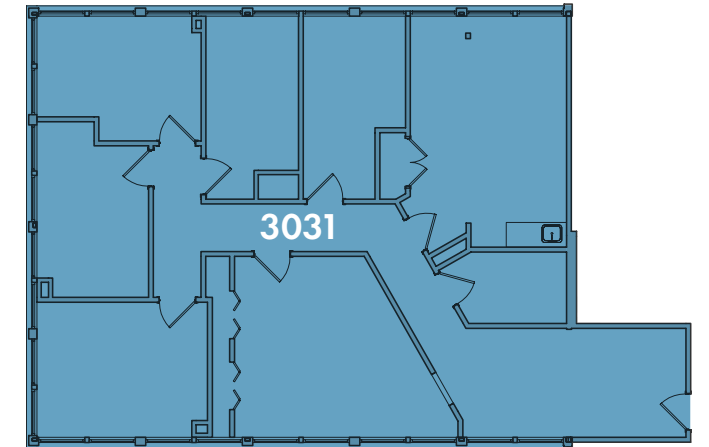
First floor suite with nine private offices and plenty of natural light.



[3019 Virtual Tour](#)

Suite 3031 - 2,046 RSF

Available 1/1/2022

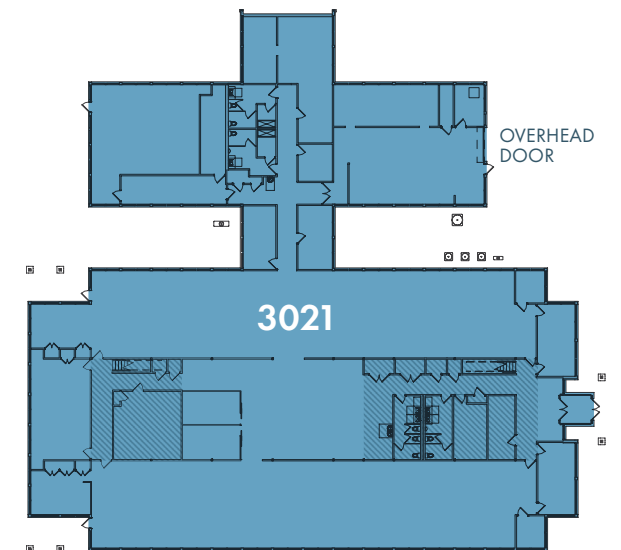


[3031 Virtual Tour](#)

Coming Soon

Suite 3021 - 6,000 - 20,816 SF

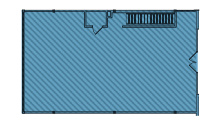
Large block availability with private entrances, a second floor balcony, an overhead door, and in-suite bathrooms.



[3021 Virtual Tour](#)



3021 M2



3021 M1

[3021 M1 Virtual Tour](#)



3001 MILLER RD | ANN ARBOR, MI

YOUR OFFICE **REIMAGINED**

NEAL WARLING
+1 734 769 3201
neal.warling@am.jll.com

KELLY FISHER
+1 734 769 3203
kelly.fisher@am.jll.com

