

3150 139th Ave SE | Bellevue, WA 98005



31,547 - 94,722 RSF

Office space for sublease

# Sunset North Building IV



## CONTACT:

**Chris Hughes** +1 425 974 4087 [chris.hughes@am.jll.com](mailto:chris.hughes@am.jll.com)

**Charlie Malley** +1 425 974 4088 [charlie.malley@am.jll.com](mailto:charlie.malley@am.jll.com)

**Sam Dommer** +1 425 974 4012 [sam.dommer@am.jll.com](mailto:sam.dommer@am.jll.com)

© 2021 Jones Lang LaSalle IP, Inc. All rights reserved. All information contained herein is from sources deemed reliable; however, no representation or warranty is made to the accuracy thereof. Jones Lang LaSalle Brokerage, Inc.



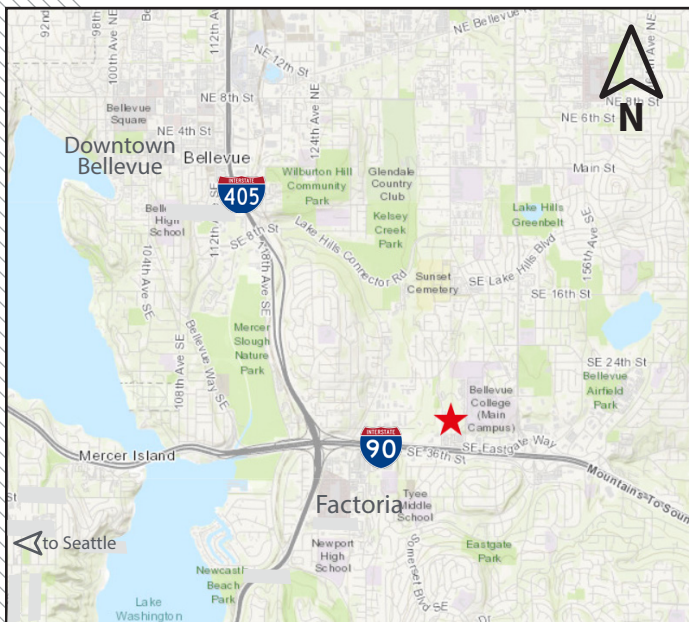
## Sublease highlights

- + 31,574 - 94,722 RSF available on floors 3, 4 & 5
- + Full floor availabilities provide excellent opportunity for “distancing” space with several large private offices, large conference rooms, and multiple copy & break rooms on each level
- + Furniture can be made available
- + Sublease term through May 31, 2025
- + Covered parking at 4 : 1,000 SF; \$50 stall/mo
- + Project includes on-site cafe and on-site fitness center with showers/lockers, and onsite daycare



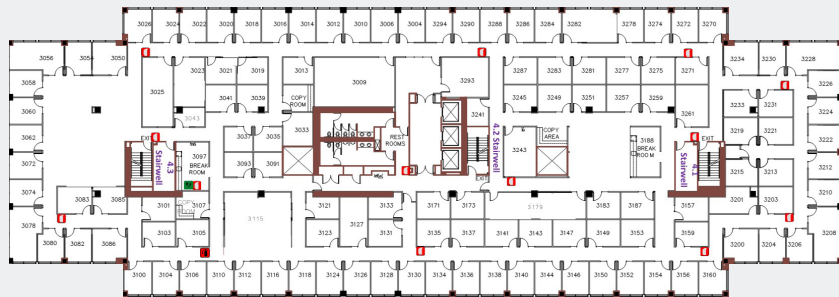
## Property location

- + Prime Bellevue I-90 tech corridor location
- + Immediate access to I-90 and I-405
- + Adjacent to Eastgate Park & Ride, park with tennis courts, basketball courts, trails/walking to Bellevue College
- + Steps away from the **Hyatt House**
- + Less than 10 minutes to more than 125 dining/ service amenities in Factoria & Eastgate

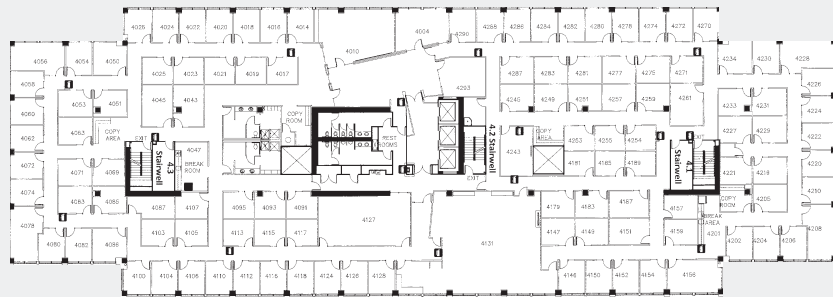


## Floor plans

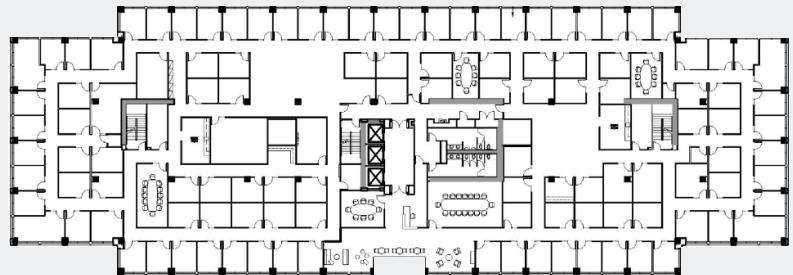
### Floor 3 - 31,574 RSF



### Floor 4 - 31,574 RSF



### Floor 5 - 31,574 RSF



### CONTACT:

**Chris Hughes**

+1 425 974 4087

[chris.hughes@am.jll.com](mailto:chris.hughes@am.jll.com)

**Sam Dommer**

+1 425 974 4012

[sam.dommer@am.jll.com](mailto:sam.dommer@am.jll.com)

**Charlie Malley**

+1 425 974 4088

[charlie.malley@am.jll.com](mailto:charlie.malley@am.jll.com)

