

97

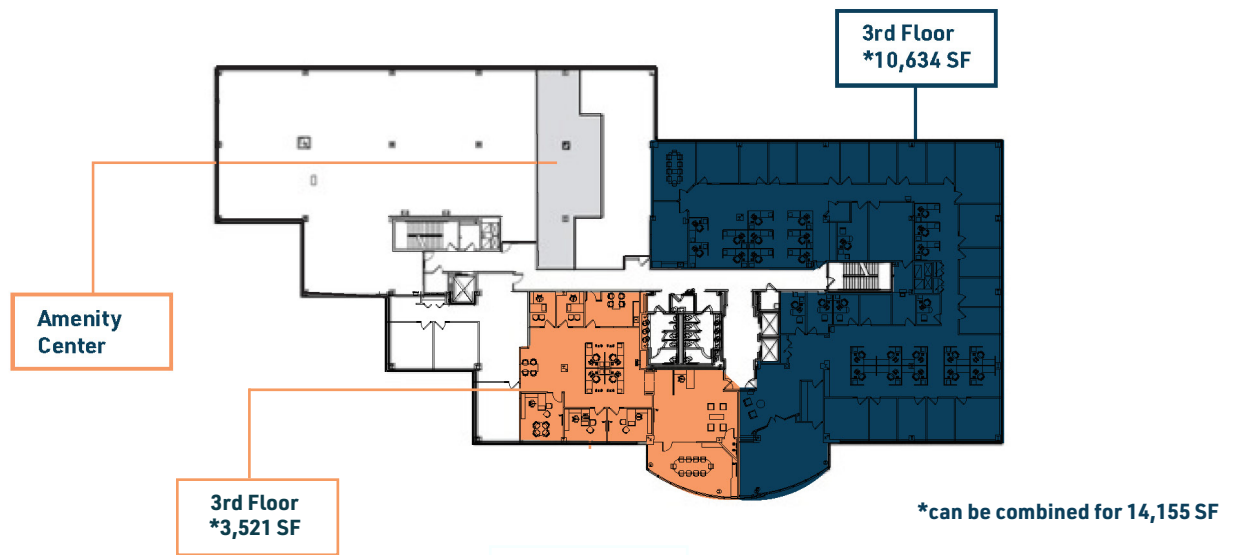
**LIBBEY INDUSTRIAL
PARKWAY**
WEYMOUTH, MA



CLASS A OFFICE SPACE NOW AVAILABLE

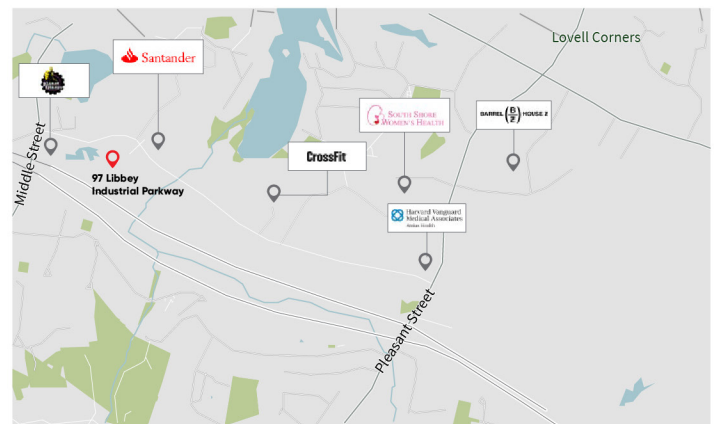
JLL is pleased to present up to 14,155 SF on the 3rd floor at 97 Libbey Industrial Parkway. Located within the Weymouth Woods Corporate Center, this first class office building offers state-of-the-art finishes. The building is positioned off Route 3 and is just a few miles from Route 93.





HIGHLIGHTS

Building Size	100,017 SF
Year Built	2002
Availability	3rd floor: 3,521 SF – 14,155 SF
Parking	5.00/1,000 SF
Amenities	Onsite grab-n-go café with amenity center
World-Class Neighbors	South Shore Hospital, Dana-Farber Cancer Institute, Brigham & Women's Hospital and Atrius Health
Nearby Attractions	Within walking distance of Planet Fitness, CrossFit 781, and Barrel House Z Brewing



FOR MORE INFORMATION PLEASE CONTACT:

Tom Kent
+1 617 531 4224
Tom.Kent@am.jll.com

Sean Lynch
+1 617 316 6488
Sean.Lynch@am.jll.com

Mike Keenan
+1 617 316 6424
Michael.Keenan@am.jll.com

