



# 10411 Motor City Drive

Bethesda, MD 20817



14,616 RSF  
Available for lease

- Recent lobby renovations
- On-site cafe
- Adjacent to Montgomery Mall
- Easy access to I-270 and the Capital Beltway
- Free unreserved parking at a ratio of 3 spaces per 1,000 SF leased
- 30 minutes to Reagan National, Dulles, and BWI Airports

**Contact**

JG Cahill

+1 301 287 3245

[JG.Cahill@am.jll.com](mailto:JG.Cahill@am.jll.com)

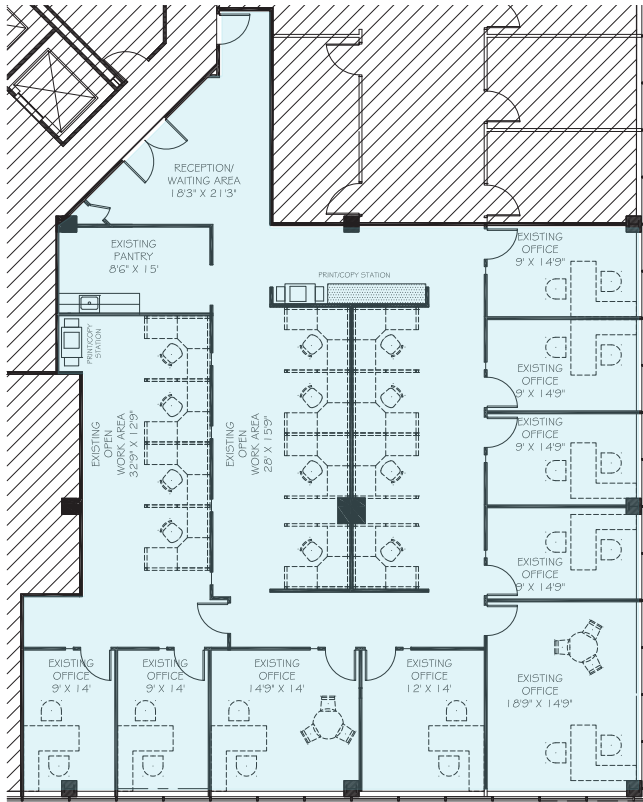
Alden Stabb

+1 301 287 3241

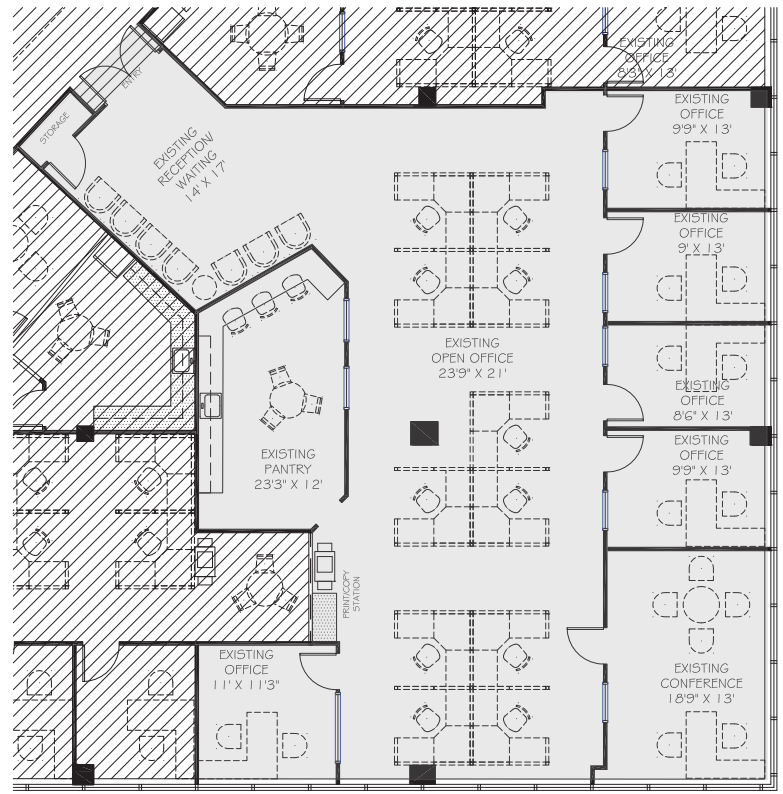
[Alden.Stabb@am.jll.com](mailto:Alden.Stabb@am.jll.com)



# Availabilities



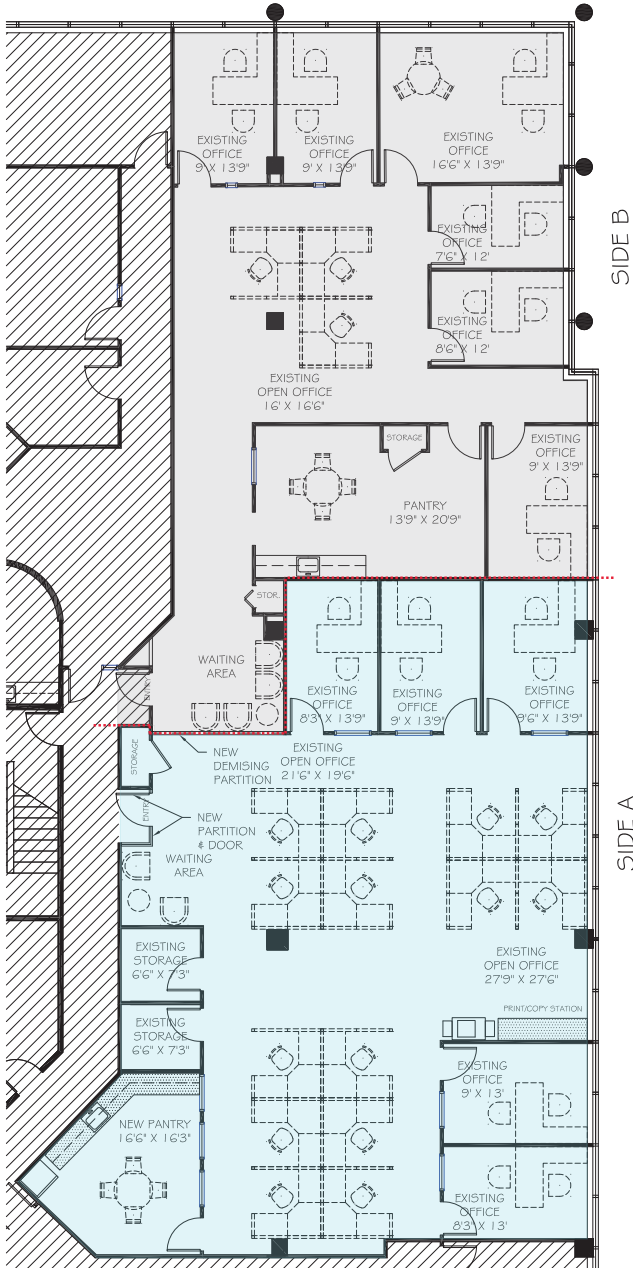
Suite 350 : 4,103 RSF



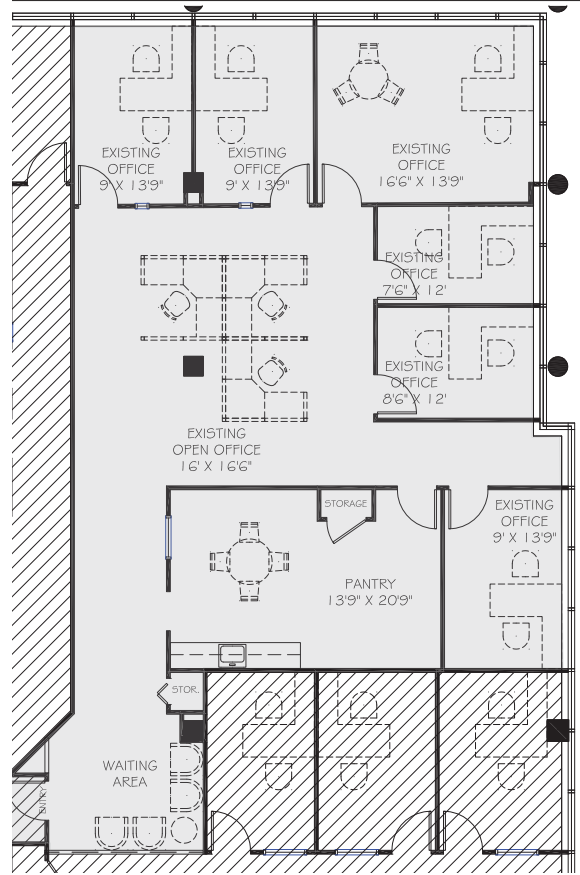
Suite 430 : 3,233 RSF



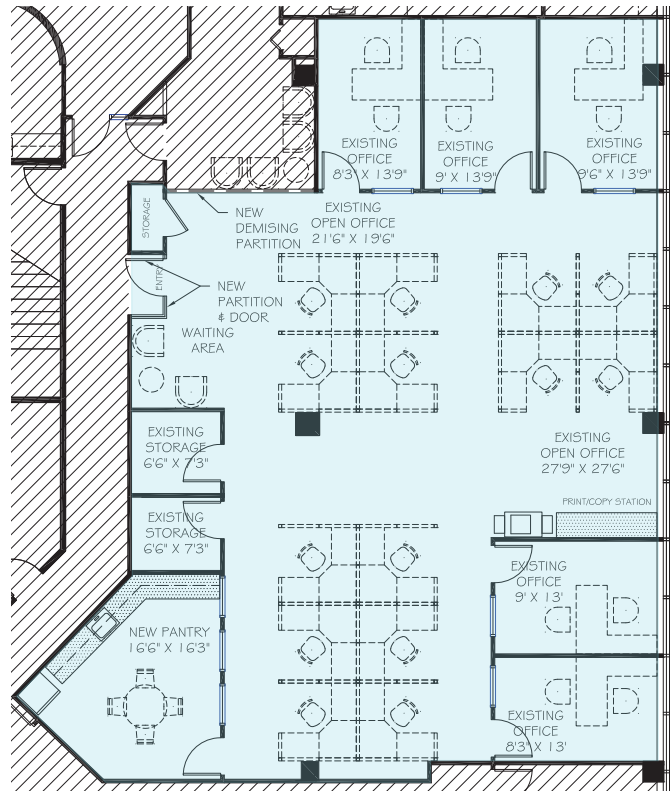
Suite 670 : 2,471 RSF



Suite 450 : 4,809 RSF



Suite 450 Side B : 2,320 RSF

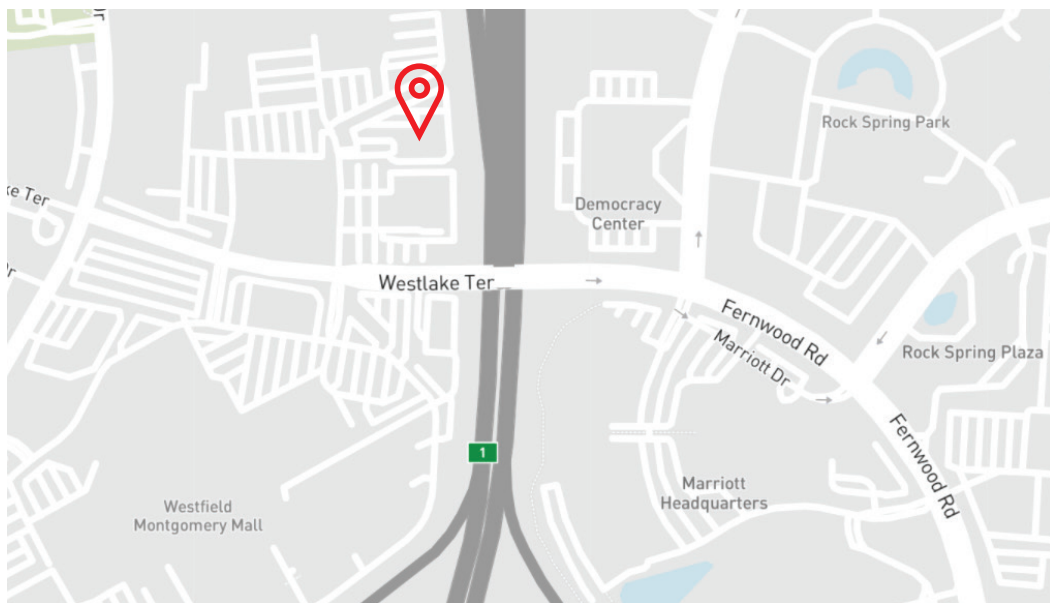


Suite 450 Side A : 2,489 RSF



# 10411 Motor City Dr.

Bethesda, MD



## Contact

JG Cahill  
Senior Vice President  
+1 301 287 3245  
JG.Cahill@am.jll.com

Alden Stabb  
Vice President  
+1 301 287 3241  
Alden.Stabb@am.jll.com

