

70 SCHERMERHORN STREET

DOWNTOWN BROOKLYN
BROOKLYN HEIGHTS

Prime **retail** space for lease at the base of a 60-unit condo building



Between Boerum Place and Court Street

RYAN P. CONDREN

+1 212 220 4117

ryan.condren@am.jll.com

GEORGE DANUT

+1 212 220 4121

george.danut@am.jll.com



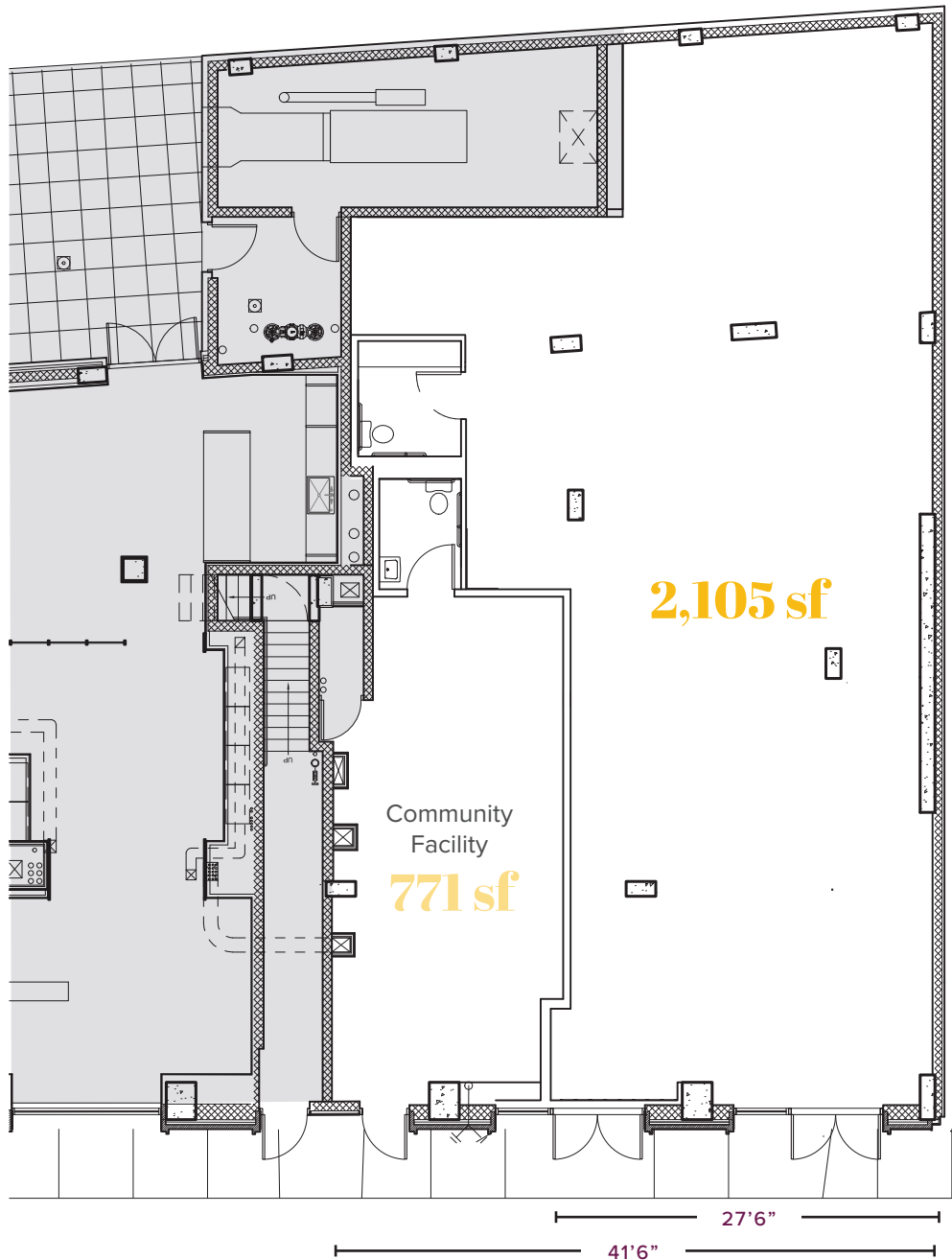
size
 Ground Floor 2,105 sf
 Community Facility 771 sf

ceiling height
 13 ft

possession
 3Q 2020

comments

- New construction just off of Prime Court Street
- Located on the border of Brooklyn Heights and Downtown Brooklyn
- Two blocks from 2 3 4 5 R lines at Borough Hall Station with an annual ridership of 10,364,534
- 6,400 residential units currently under development within Downtown Brooklyn
- Over 100,000 office workers in the area



SCHERMERHORN STREET

170k

DAYTIME POPULATION

162k

AVERAGE HOUSEHOLD INCOME

26 million

TOTAL ANNUAL RIDERSHIP

*WITHIN A 1/4 MILE RADIUS



Jones Lang LaSalle Brokerage, Inc. | 330 Madison Avenue New York, NY 10017
DISCLAIMER

Although information has been obtained from sources deemed reliable, neither Owner nor JLL makes any guarantees, warranties or representations, express or implied, as to the completeness or accuracy as to the information contained herein. Any projections, opinions, assumptions or estimates used are for example only. There may be differences between projected and actual results, and those differences may be material. The Property may be withdrawn without notice. Neither Owner nor JLL accepts any liability for any loss or damage suffered by any party resulting from reliance on this information. If the recipient of this information has signed a confidentiality agreement regarding this matter, this information is subject to the terms of that agreement. ©2020 Jones Lang LaSalle IP, Inc. All rights reserved.

