

Masha Reprintseva

— *The* —  
ENCHANTED  
*Wood*

In Support of Peace and Mental Health

There is an entire forest full of the most incredible flowers,  
plants and trees, shiny streams nurturing fish,  
and nests that give home for millions of birds and their  
children - there is a vibrant forest inside you -  
the forest of your beautiful heart, your good will and care to all  
those who in need, those who seek for soothe and shelter.

## *The Enchanted*

*Wood* welcomes you to go on a wonderful voyage, where you discover new embroidery tricks and polish ones that you have previously learned.

Some may find here your favourite techniques, materials, approaches and characters alongside with symbolism hidden behind every hero of the play.

Just have a look at the juicy Pomegranate which is about to drop some glossy seeds.

Marvel at the magical blooming Hibiscus - it flounces satin petals, and spreads an incredible scent.

Approach closer to the couple of fairytale creatures and unravel the secret. What are they whispering about?

Each of you will find pure joy of stitching and on completing the lessons you will get a lovely embroidery piece to embellish your interior.

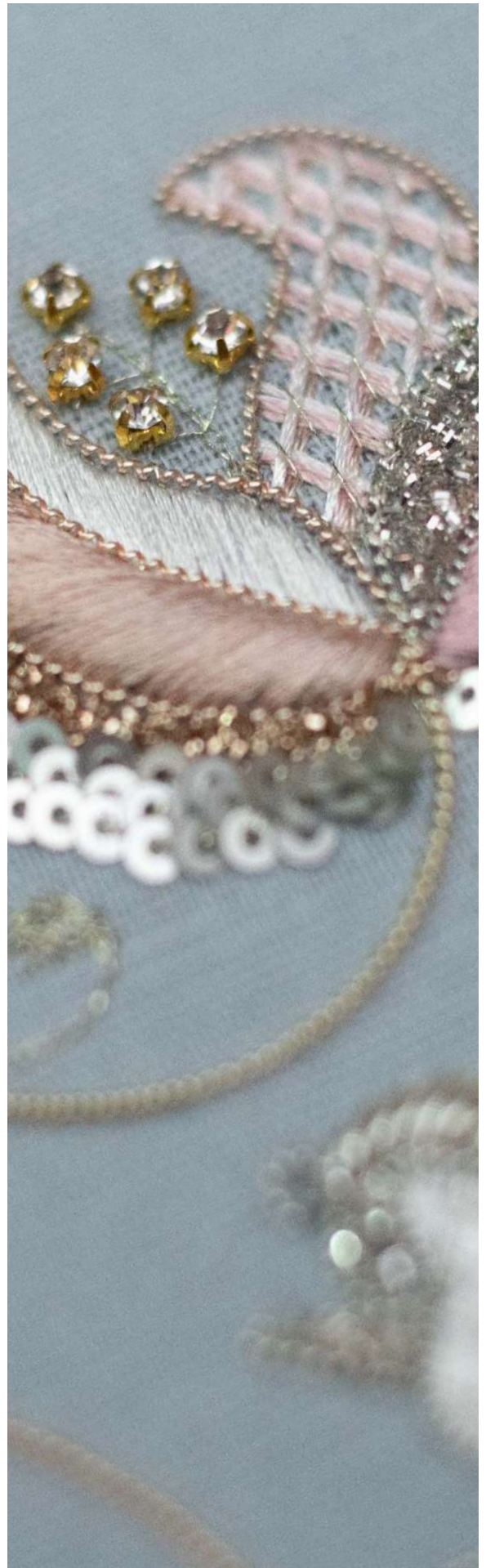
However, I wish to highlight that not only for the interior of our homes we do this, but for the interior of our souls too.

The healing power of embroidery exorcise pain. Its tactile language scripted by a needle and thread, so let us plunge into its variety of colours and textures, because stitching is increasingly becoming recognised as an effective way to combat depression. The absorption demanded by needlework – its flow – clears the mind and reduces stress.

Your embroidery is your medium for the therapeutic and healing process. It helps to recognise some emotions that we cannot express in words.

Just take a look at and appreciate what you stitch no matter how fine you do.

Concentrate on your effort not the result and enjoy the process.



# Materials and Tools



- 1 Wire-cutters
- 2 Scissors (for cutting fabrics)
- 3 Embroidery scissors
- 4 Broad plate
- 5 Sew on crystal rhinestones
- 6 Toho glass beads
- 7 Freshwater pearl
- 8 Light rose gold bullion purl
- 9 Light silver bullion purl
- 10 Antique gold bullion purl
- 11 Rose gold bullion purl
- 12 Silver sequins
- 13 Golden sequins
- 14 Pearl sequins
- 15 Pearl purl silver
- 16 Pearl purl gold
- 17 Rayon silk embroidery thread (see next page for palette)
- 18 Water-stable ink pen
- 19 A piece of fabric 40x40cm (cotton/linen)
- 20 A piece of wire
- 21 Embroidery needles
- 22 Pins
- 23 Cotton embroidery thread (see next page)
- 24 Scraps of felt
- 25 Ruller
- 26 Synthetic sewing thread
- 27 Water-soluble film



# Threads



DMC 168/Madeira 901



Madeira Rayon 40 col.1136



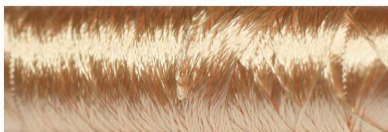
Madeira Rayon 40 col. 1190



Madeira Rayon 40 col. 1055



Madeira Rayon 40 col. 1338



Madeira Rayon 40 col. 1084



Madeira Rayon 40 col. 1126



Madeira Rayon 40 col. 1001



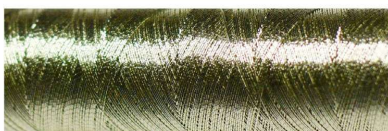
Madeira Rayon 40 col. 1053



Madeira Rayon 40 col. 1019



DMC diamant D168/Madeira FS Metallic 40  
Embroidery Thread silver



DMC diamant D3821/Madeira FS Metallic 40  
Embroidery Thread gold 6

## Sequins



Golden sequins  
(flat, satin, 3mm)



Silver sequins  
(flat, satin, 3mm)



Pearl sequins  
(flat, satin, 3mm)

## Beads



Toho round seed glass  
beads 11/0 PF551 -  
permanent finish  
galvanized rose gold



Freshwater pearl bead  
(potato/pear shape, about  
4mm size)



Sew on crystal  
rhinestones (white/gold)  
3mm about 6pcs

## Purl



Pearl purl silver (3mm)



Pearl purl light gold (3mm)



Broad plate (copper colour, 2mm width)  
about 30cm long



Antique gold bullion rough purl (3mm)  
about 2.5m long



Light silver bullion rough purl (3mm) about  
2.5m long



Rose gold bullion rough purl (3mm) about  
2.5m long



Light rose gold bullion rough purl (3mm)  
about 2.5m long



# The Pattern



actual size 18x18cm