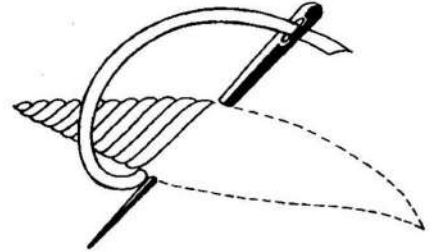
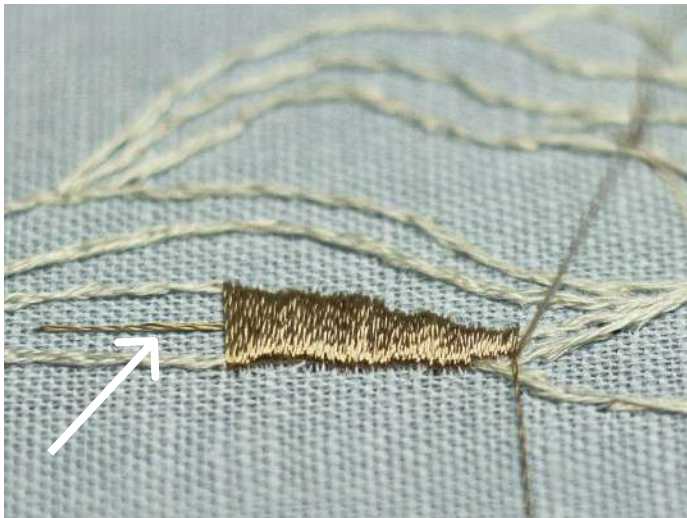


## Lesson 2. THE MOSS HILL

Now it is time to "paint" the "canvas" with silk gloss and metallic shine. To fill in the most of the spaces, you will use a "satin stitch".

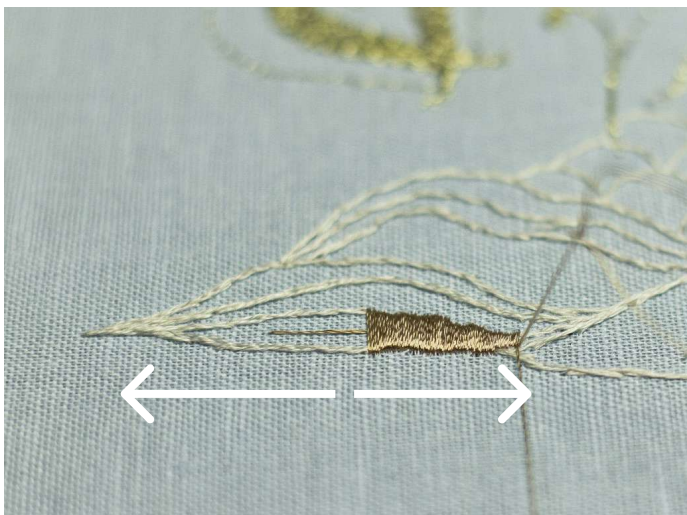


Thread the needle with a strand of rayon thread, Madeira Rayon 1136. Secure the end of the thread in the centre of the bottom part of the hill, start the filling, approaching to the sides.



Madreia Rayon Nº40 col. 1136

Fill in the space, going from the centre to the right, then from the centre to the left.





On accomplishing the element, change the thread. Use one strand of Madeira Rayon 1190 to fill in the next part with a "satin stitch".



Madeira Rayon Nº40 col. 1190



As shown in the photograph on the left, you need to start from the centre, and go to the sides.



Process the same series of stitches to cover the highest part of the hill.

Use one strand of Madeira Rayon 1055.



Madeira Rayon Nº40 col. 1055



Thread the needle with a strand of the familiar thread Madeira Rayon 1336. Using it, fill in the space of the upper part of the hill.



With a single strand of Madeira Rayon 1338, fill in the highest part of the upper hill.



Madeira Rayon №40 col. 1338



Set five golden beads in the space between the highest and the lowest parts of the hill.

