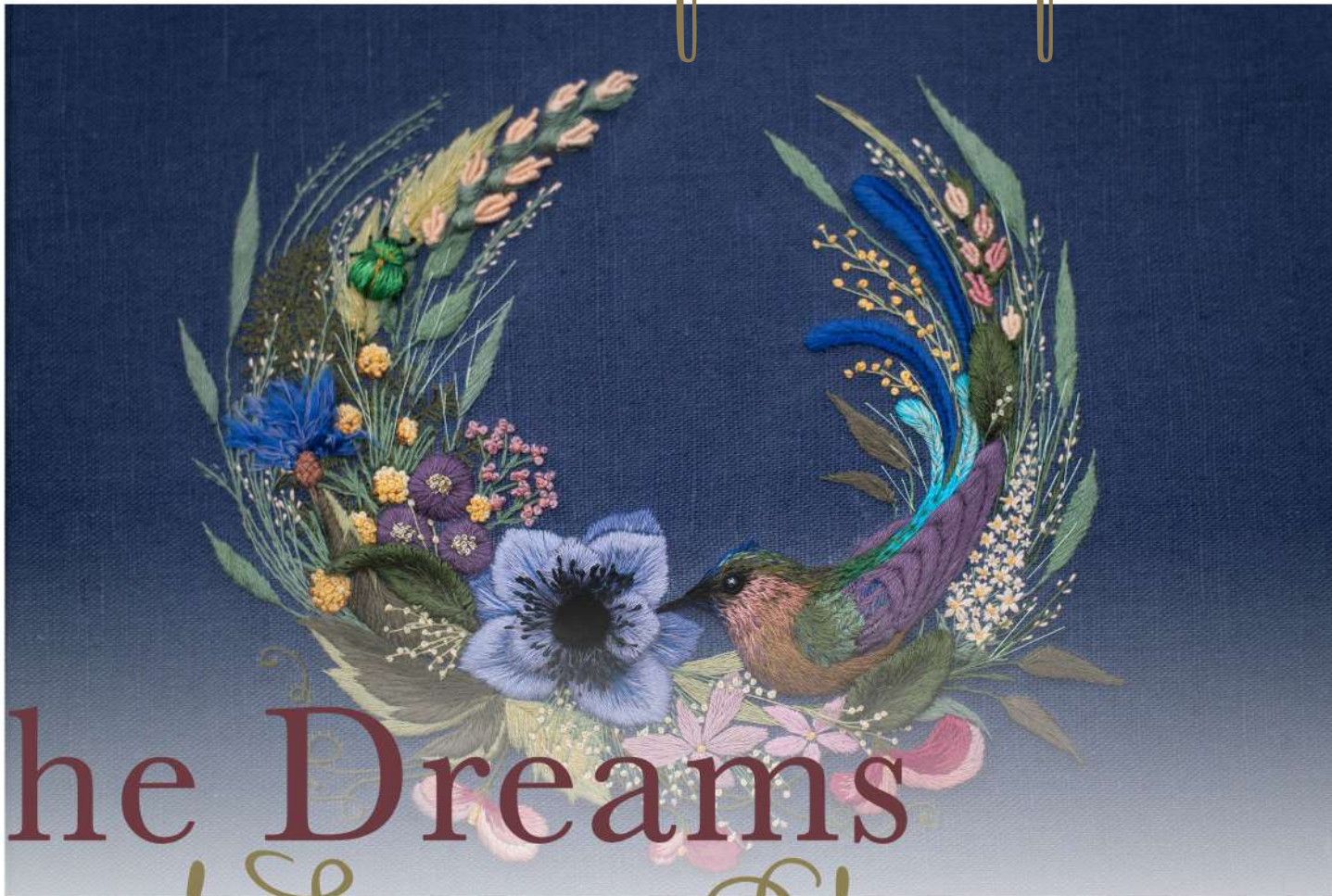


Embroidery Workshops



The Dreams of Summer Blossom

An illustrated story of many embroidery tricks

Masha Reprintseva
myrtusworkshop

Materials and Instruments

Cotton embroidery thread Gamma

The chief aim of colour should be to serve expression as well as possible. I put down my colours without a preconceived plan.

Henri Matisse



Gamma 0025



Gamma 3021



Gamma 3028



Gamma 0876



Gamma 0028



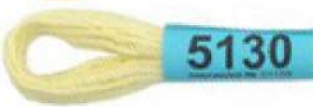
Gamma 0808



Gamma 3019



Gamma 3194



Gamma 5130



Gamma 0043



Gamma M-24



Gamma M-02

Colour is one of the key elements of embroidery. Colour gives liveliness to any needlework. However, many textures aimed to construct complexity and depth of work. They let you create a three-dimensional piece, making you inventive and skilful at satin and matt floss, metalized threads and wire use.

Two key methods of stumpwork embroidery are to be shown here:

- wireframe method
- stuffing/padding with felt.

The selected palette of threads and their texture inspire the experiments! Matte cotton floss and gloss thin rayon threads, shimmering - metallized floss aimed to create rich swaying grass, rich blossoming and sumptuous plumage of the bird.

In addition, the materials traditionally used in silk floristry, such as artificial stamens and velvet, will be in use.

Using these materials, you will create real and imaginary volume: by simply collecting in one bouquet various herbs and flowers, crowned with tiny bronze beetles, the shiny golden blossoming balls, juicy berries, romantic anemone and the bird, came from the faraway land.

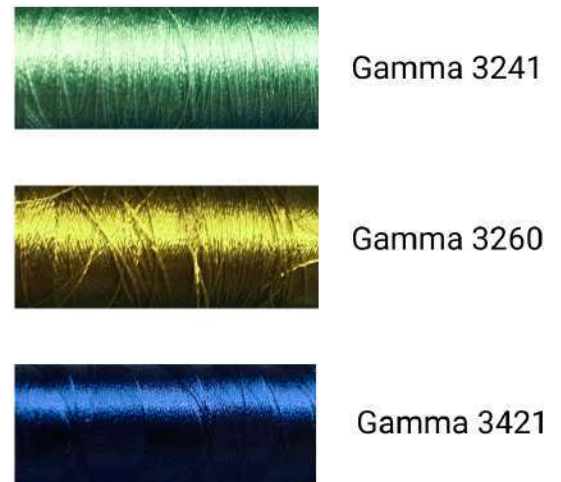
Let's make a garden together, fresh, shimmering full of bloom, symbols, colours and our endless love for embroidery!



Viscose embroidery floss Gamma



Fine rayon thread Gamma Gamma





- 1 A piece of fabric for embroidery - natural linen size 30x40cm
- 2 A piece of silk velvet 5x5cm (for anemone core)
- 3 Scraps of felt (for stuffing volumetric elements and mounting the work)
- 4 A piece of tracing paper (for transferring the design)
- 5 The Pins
- 6 Embroidery needles
- 7 A pencil
- 8 White pencil or a piece of chalk (sharpened)
- 9 A pen
- 10 Piece of mesh or tulle (20x20cm)
- 11 Monofilament

- 12 Wire
- 13 A small embroidery hoop
- 14 Scissors (various)
- 15 Wire cutters
- 16 Tweezers
- 17 An awl
- 18 Some sewing threads
- 19 Clamp
- 20 Artificial stamens
- 21 A piece of cotton coarse calico to cover the wrong side of the finished work
- 22 Two pieces of cardboard (size 30x30 cm)
- 23 Black glass beads (for the eye of the bird)

To transfer the design to the fabric, I recommend the powdering method.

Firstly outline the design onto the tracing paper.

Secondly, using a needle, puncture the traced outlines.

After that, fix the tracing paper onto the fabric, dust with powder (you can use baby powder).

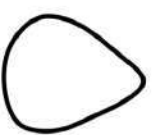


You may use a self-made powder pad or cosmetic brush for dispensing the powder across the design.

At the final stage, for mounting the work, you will need glue stick, creasing tool, ruler, knife and cutting mat.



Anemone petal 3pc



Small leaf 1pc



Medium size leaf 1pc



Big leaf 1pc





The petals are ready!



Carefully cut off the mesh along the edges of the petals.



Steam the petals and press them gently.