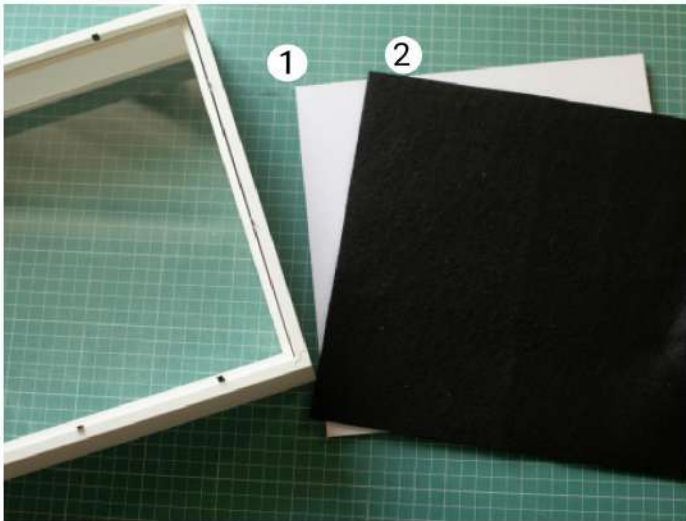




Framing



There are several simple ways to frame the work.

1. The easiest one is to send it to the workshop.
2. Stretch the work onto a stretcher with the canvas on the base.
3. Use a cardboard base (binding board). (переплетный картон). This I will show in detail.

You will need a frame, two pieces of binding board (1), the size of which should correspond to the frame used, a piece of felt (2) - a padding layer to set between the wrong side of the embroidery and the cardboard.



Glue the felt piece on the cardboard. This layer will be the base for the embroidered piece.



Glue the fabric to the second piece of cardboard (mind the allowances). This will be the layer that covers the wrong side. You can use white calico or flax fabric.



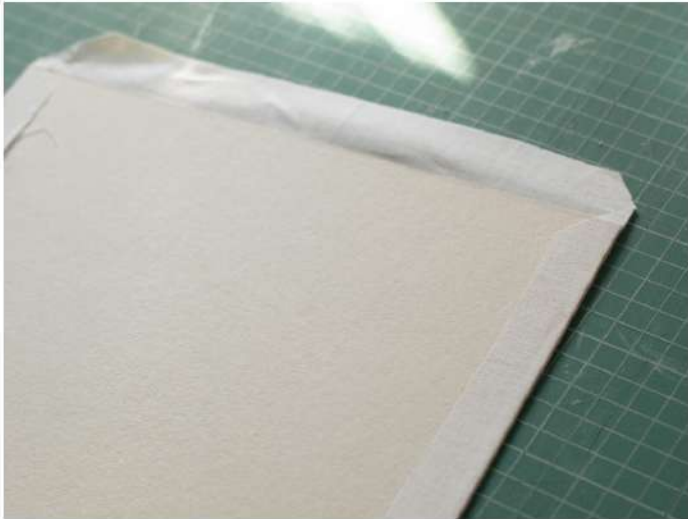
The fabric is glued to the cardboard with a glue stick. It dries quickly and leaves no residue or stains.



For smoothing, you can use a creasing tool.



Corner allowances are trimmed (as shown). Leave some space, do not cut too close to the cardboard corners.



One by one, each allowance should be folded over and glued.



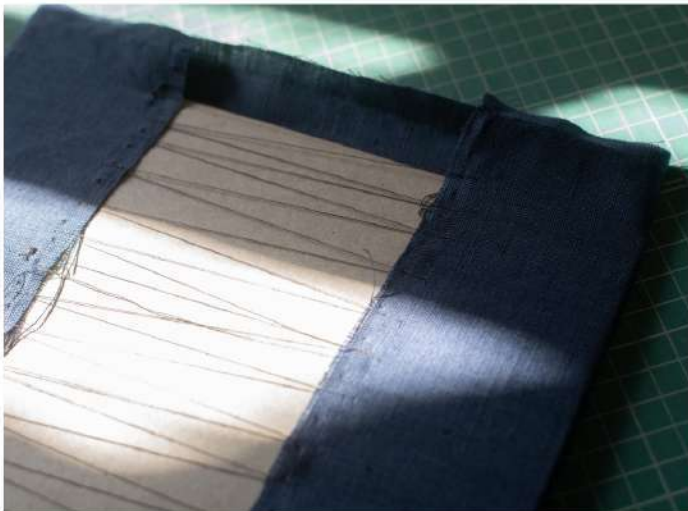
One cardboard piece (for the backside) is ready.



Now we need to work on the front side. On the second cardboard blank, place the embroidery work over the felt layer.



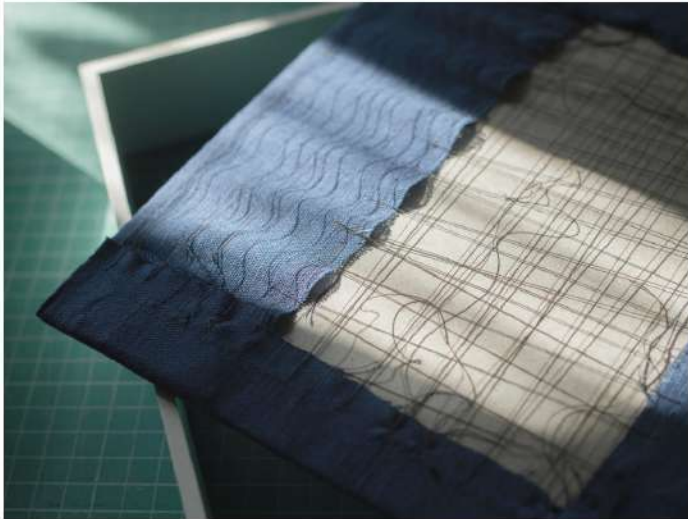
Secure the fabric with pins along the edges.



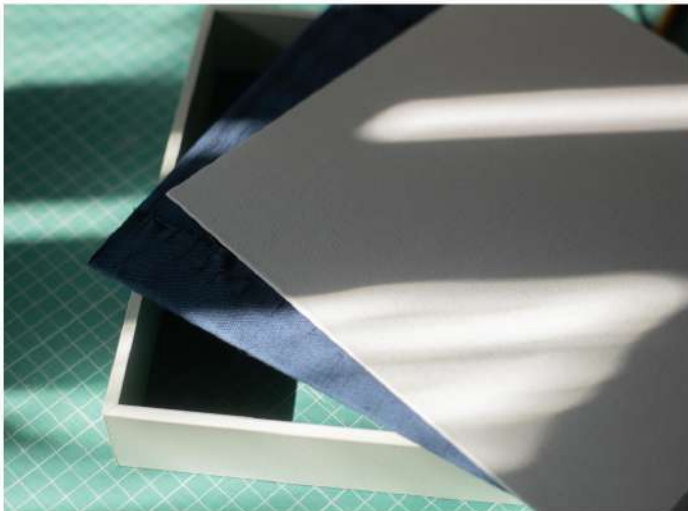
Turning the work over to the reverse side, turn off the allowances on opposite sides and with the sewing thread "go" from one side to the other - pull off the allowances, directing them towards each other, but not too much.



Pin the corners and secure them with a couple of stitches.



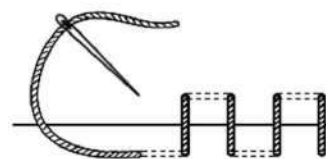
To avoid deforming the embroidery, stretch the other side by pulling the opposing seam allowances towards each other.



Now in front of you are two cardboard blanks. One is white, the other is embroidered.



Set two pieces together (wrong side together). Use small blind stitches to join the two pieces. You can use regular sewing thread or monofilament thread.





The space between the stitches should be no more than 0.5 cm.



Wipe off the dust from the frame and the glass. Use a soft brush to take off the dust from the embroidery work.



Congratulations!



The embroidery work is ready and has probably found a great place in your home!

I hope it was interesting for you to go through all the stages of making this embroidery with me. It will be great if it inspires you to create your own designs. Perhaps, some of the secrets and the techniques revealed here will be useful!

I wish you to have more discoveries in the world of embroidery and endless inspiration!