

# 850108 Surgical Gown CLASSIC

Surgical Gown suited for most procedures

## Product details

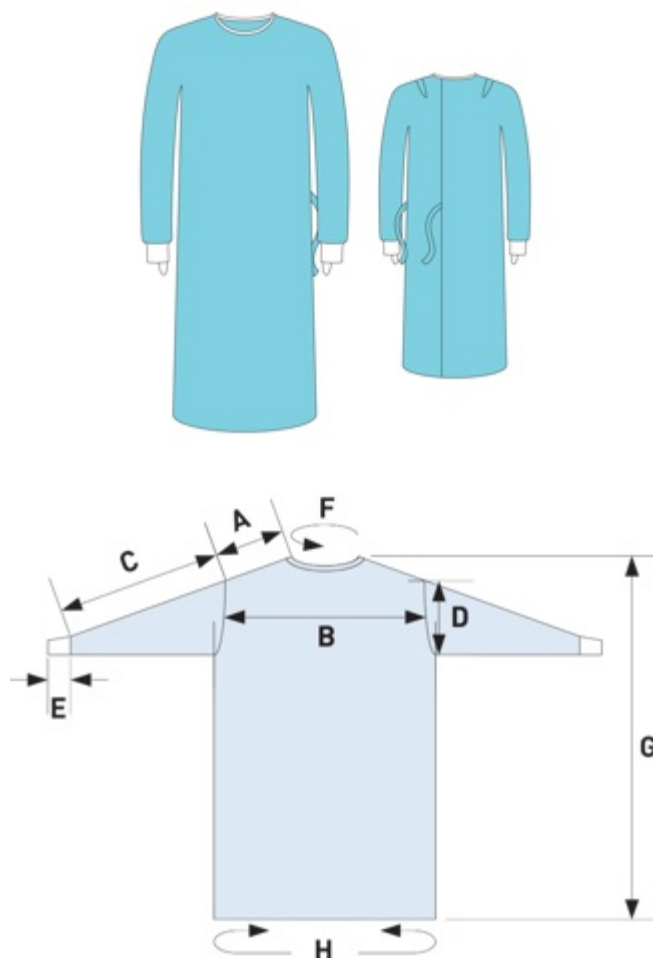
<b>Product group name:</b>	CLASSIC, Standard performance
<b>Size:</b>	XL-L
<b>Descriptive feature:</b>	Alcohol repellent, Antistatic treated, Standard performance, Two towels, Wrapped, FSC certified paper
<b>Colour:</b>	Ocean
<b>Sterile:</b>	Sterile
<b>Brand:</b>	BARRIER®

## Product descriptions

**Short description:** Surgical Gown suited for most procedures

**Long description:** Spunlace Nonwoven Surgical Gown made from FSC certified paper

## Images



Find out more at [www.molnlycke.com](http://www.molnlycke.com)

Mölnlycke Health Care AB, Box 6, SE-431 21 Mölndal, Sweden. Phone +46 31 722 30 00.  
The Mölnlycke trademarks, names and logotypes are registered globally to one or more of the Mölnlycke Health Care Group of Companies.

©2026 Mölnlycke Health Care AB. All rights reserved.

Delivered items

850108-00

**Sales released in:** Austria, Belgium, Bulgaria, Colombia, Czechia, Denmark, Estonia, Finland, France, Germany, Hong Kong, Hungary, Iceland, Ireland, Italy, Latvia, Lebanon, Liechtenstein, Lithuania, Luxembourg, Malaysia, Netherlands, Norway, Poland, Portugal, Singapore, Slovakia, South Africa, Spain, Sweden, Switzerland, United Kingdom of Great Britain and Northern Ireland

**Country of origin:** Thailand

**Shelf life:** 5 years

**Sterilization method:** Irradiation

**Production Responsibility:** Mölnlycke Health Care (Thailand) Ltd, Amata Nakorn (Bang Pakong), Industrial Estate, 700/461 Moo 7 Bangna-Trad Road, Km 57 Tambol Donhuaroh, Amphur Muang Chonburi 20000, Thailand

**Packing information:** First packaging layer is a peel-open sterile barrier, plastic/plastic. Once opened the sterile barrier cannot be closed again. Second layer is a plastic liner / bag. Third layer is a corrugated board dispenser box. Fourth layer is a corrugated board transport box.

**Is suitable for Tray:** No

Packing level	Quantity	GTIN Code	UDI-DI	Width x Length x Height	Volume	Weight gross / net
Piece	1					317.222 g / -
Consumer pack	1	07333350097806	07333350097806			
Dispenser box	18	07333350686581	07333350686581	279x310x384 mm		
Transport box	36	07333350314323	07333350314323	397x580x329 mm	75.756 dm3	11.42 / 9 kg
Pallet	720	7313661464467		800x1200x1789 mm	1717.44 dm3	253.4 kg / -

Material

**Animal tissues:** No  
**Human blood derivatives:** No  
**Natural rubber latex:** No  
**Medicinal substances:** No  
**Phthalates:** No  
**Polyvinyl chloride:** No

Product Composition Accessories

Product Component	Composition
Hand Towels	67 gsm Tissue 94% recycled and polyamide scrim. Folded:15x20cm, unfolded: 30x40cm

Find out more at [www.molnlycke.com](http://www.molnlycke.com)

Mölnlycke Health Care AB, Box 6, SE-431 21 Mölndal, Sweden. Phone +46 31 722 30 00.  
 The Mölnlycke trademarks, names and logotypes are registered globally to one or more of the Mölnlycke Health Care Group of Companies.  
 ©2026 Mölnlycke Health Care AB. All rights reserved.



Product Component	Composition
Wrapping paper	45 gsm 100% virgin bleached kraft fibers. Size: 58x56cm

### Packaging Composition

Product Component	Composition
Primary Packaging	Top web: PE/PA laminate, 100% virgin content. Base web: PE/PA laminate 100% virgin
PE liner	23 gsm 100% virgin Polyethylene
RET box	FSC Certified (no. C137267), Corrugated cellulose board, 100% recycled content
TRP box	Corrugated cellulose board, > 90% recycled content, 100% recyclable, FSC certified - C137267

### Product Composition Surgical Gowns

Product Component	Composition
Main material	FSC Certified paper (no. C186381), 68 gsm AR/AS Spunlace, 55% Wood pulp/Polyester 45% Spunlace
Neck band	FSC Certified paper (no. C186381), 68 gsm AR/AS Spunlace, 55% Wood pulp/Polyester 45% Spunlace
Hook and loop	Hook: 91% Polyamide + 9% Polyurethane and Loop: 88% Polyamide + 12% Polyurethane
Inner tie-bands	FSC Certified paper (no. C186381), 68 gsm AR/AS Spunlace, 55% Wood pulp/Polyester 45% Spunlace
Outer tie-bands	FSC Certified paper (no. C186381), 68 gsm AR/AS Spunlace, 55% Wood pulp/Polyester 45% Spunlace
Cuffs	100% Polyester

### Product Performance Surgical Gowns, EN 13795 Standard Performance

Characteristics	Test Method	Internal Test Method	Unit	Requirement Critical Product Area	Requirement Less Critical Product Area	Product Performance Critical Product Area	Product Performance Less Critical Product Area
Linting	EN ISO 9073-10	T-1006	Log <sub>10</sub> (lint count)	≤4.0	≤4.0	Gown fabric: 3.5 (front), 3.7 (reverse)	Gown fabric: 3.5 (front), 3.7 (reverse)
Tensile strength - Wet, CD	EN 29073-3	T-229	N	≥20	Not required	Gown fabric: 40.10 Sleeve seam: 39.02	N/A

Find out more at [www.molnlycke.com](http://www.molnlycke.com)

Mölnlycke Health Care AB, Box 6, SE-431 21 Mölndal, Sweden. Phone +46 31 722 30 00.  
The Mölnlycke trademarks, names and logotypes are registered globally to one or more of the Mölnlycke Health Care Group of Companies.

©2026 Mölnlycke Health Care AB. All rights reserved.



Characteristics	Test Method	Internal Test Method	Unit	Requirement Critical Product Area	Requirement Less Critical Product Area	Product Performance Critical Product Area	Product Performance Less Critical Product Area
Cleanliness - Microbial	EN ISO 11737-1	T-303	CFU/100 cm <sup>2</sup>	≤300	≤300	5.85	5.85
Tensile strength - Dry , MD	EN 29073-3	T-229	N	≥20	≥20	Front: 204.38 Sleeve seam: 38.56	Gown fabric: 204.38 Shoulder seam: 36.61
Resistance to liquid penetration	EN ISO 811	T-280	cm H <sub>2</sub> O	≥20	≥10	Gown fabric: 25 Sleeve seam: 23	Gown fabric: 25 Shoulder seam: 19
Resistance to microbial penetration - Dry	ISO 22612	T-1004	CFU	Not required	≤300	N/A	Shoulder seam: 151
Bursting strength - Wet	EN ISO 13938-1	T-233	kPa	≥40	Not required	Gown fabric: 203.8 Sleeve seam: 289.8	N/A
Tensile strength - Wet, MD	EN 29073-3	T-229	N	≥20	Not required	Gown fabric: 170.82 Sleeve seam: 39.02	N/A
Resistance to microbial penetration - Wet	ISO 22610	T-1005	BI	≥2.8	Not required	Gown fabric: 3.5 Sleeve seam: 3.5	N/A
Bursting strength - Dry	EN ISO 13938-1	T-233	kPa	≥40	≥40	Gown fabric: 208.1 Sleeve seam: 285.3	Gown fabric: 208.1 Shoulder seam: 318.7
Tensile strength - Dry , CD	EN 29073-3	T-229	N	≥20	≥20	Gown fabric: 38.19 Sleeve seam: 38.56	Gown fabric: 38.19 Shoulder seam: 36.61

## Product Performance Surgical Gowns AAMI level 2

Characteristics	Test Method	Internal Test Method	Unit	Requirement	Requirement Critical Product Area	Requirement Less Critical Product Area	Product Performance Critical Product Area	Product Performance Less Critical Product Area
Spray impact	WSP 080.3/AATCC 42	T-1025	g	≤1	≤1	≤4.5	Gown fabric: 0.17 Sleeve seam: 0.09	Gown fabric: 0.17 Shoulder seam: 0.11

Find out more at [www.molnlycke.com](http://www.molnlycke.com)

Mölnlycke Health Care AB, Box 6, SE-431 21 Mölndal, Sweden. Phone +46 31 722 30 00.  
The Mölnlycke trademarks, names and logotypes are registered globally to one or more of the Mölnlycke Health Care Group of Companies.

©2026 Mölnlycke Health Care AB. All rights reserved.



Characteristics	Test Method	Internal Test Method	Unit	Requirement	Requirement Critical Product Area	Requirement Less Critical Product Area	Product Performance Critical Product Area	Product Performance Less Critical Product Area
Hydro head	WSP 080.6/AATCC 127	T-1030	cm H <sub>2</sub> O	≥20	≥20	Not required	Gown fabric: 26.0 Sleeve seam: 28.0	N/A

## Product Performance Surgical Gowns Additional tests

Characteristics	Test Method	Internal Test Method	Unit	Requirement	Requirement Critical Product Area	Requirement Less Critical Product Area	Product Performance Critical Product Area	Product Performance Less Critical Product Area
Flammability	16 CFR 1610.4	N/A	sec	N/A	≥3.5	≥3.5	Gown fabric: 6	Gown fabric: 6
Alcohol Repellency Rating	WSP 80.8	T-283	1-10	N/A	Gown fabric: ≥7	Gown fabric: ≥7	Gown fabric: 9	Gown fabric: 9
WVTR (water vapor transmission rate)	GB/T12704.1	N/A	g/(m <sup>2</sup> · 24h)	N/A	N/A	N/A	Gown fabric: 68379	Gown fabric: 68379
Electrostatic decay	IST 40.2	N/A	s	0.5	N/A	N/A	Gown fabric: 0.01	Gown fabric: 0.01

## Technical

## Dimension

Dimension reference	Dimension text	Dimension value
A	Shoulder	24 cm
B	Chest (most narrow part at front)	60 cm
C	Top sleeve	59 cm
D	Armhole	30 cm
E	Cuff length	7 cm
F	Neck	70 cm
G	Length, highest point at shoulder	145 cm
H	Circumference	174 cm

Find out more at [www.molnlycke.com](http://www.molnlycke.com)

Mölnlycke Health Care AB, Box 6, SE-431 21 Mölndal, Sweden. Phone +46 31 722 30 00.  
 The Mölnlycke trademarks, names and logotypes are registered globally to one or more of the Mölnlycke Health Care Group of Companies.

©2026 Mölnlycke Health Care AB. All rights reserved.



**Instructions**

**How product works:**

Surgical Gowns are single use, disposable, fluid-repellent garments intended to be used as sterile by operating room personnel during surgical procedures to protect both the patient and the operating room personnel (users) from the transfer of microorganisms, body fluids and particulate material.

**Classifications**

Regulation type(s)	MDR Class IS
CE Certificate Number:	MDR 722028;UKCA 760670
Intended Purpose:	The Surgical Gowns are single use, disposable, fluid repellent garments intended to be used as sterile by operating room personnel during surgical procedures to protect both the patient and the operating room personnel (users) from the transfer of microorganisms, body fluids and particulate material.
MDR Classification Rule:	1
Conformity Annexes:	IX
Measuring Function:	No
Notified body medical devices/PPE:	BSi 2797
Regulatory Released:	Austria, Belgium, Bulgaria, Czechia, Denmark, Estonia, Finland, France, Germany, Hungary, Iceland, Ireland, Italy, Latvia, Lithuania, Luxembourg, Netherlands, Norway, Poland, Portugal, Slovakia, Spain, Sweden, Switzerland, United Kingdom of Great Britain and Northern Ireland

**Applied standards: The standards presented below is a selection of the most essential standards that are adhered to.**

EN 13795-1, ANSI/AAMI PB70, EN ISO 9001, ISO 14001, ISO 11137-1, ISO 11137-2, EN ISO 10993-18, EN ISO 10993-10, EN ISO 10993-5, EN ISO 10993-1, EN 556-1, ISO 15223-2, EN ISO 11607-2, EN ISO 11607-1, EN 62366, EN ISO 13485, EN ISO 20417

**Removable label**

Yes

**GMDN Code (Global Medical Device Nomenclature)**

35091 Operating room gown, single-use

**EMDN Code (European Medical Device Nomenclature)**

T020401 STANDARD SURGICAL GOWNS

**Other specific product information**

Classic SP Surgical gowns sterile FSC Certified paper (no. C186381)

Find out more at [www.molnlycke.com](http://www.molnlycke.com)



## UNSPSC

42131702 Surgical gowns

## Commodity Code

4818500000 Wearing apparel mainly made of tissue/pulp paper

## CE Responsibility / Legal Manufacturer

Mölnlycke Health Care AB, Entreprenorsstraket 21, SE-431 53 Mölndal Sweden

## Basic UDIDI

733243000000000332K4

Find out more at [www.molnlycke.com](http://www.molnlycke.com)

Mölnlycke Health Care AB, Box 6, SE-431 21 Mölndal, Sweden. Phone +46 31 722 30 00.  
The Mölnlycke trademarks, names and logotypes are registered globally to one or more of the Mölnlycke Health Care Group of Companies.  
©2026 Mölnlycke Health Care AB. All rights reserved.

