



THE REYNOLDS
COMPANY
ELECTRICAL SUPPLY

User Group
Online Seminars

Introduction to Operator Interfaces

February 16, 2022

Technical Seminars from TRC

Register to receive a calendar invite



TECH TALK

- **Quality Remanufacturing by Rockwell Automation**
Wed, February 23, 2022 @ 10am
- **TBD**
Wed, March 9, 2022 @ 10am
- **TBD**
Wed, March 23, 2022 @ 10am

USER GROUP

- **Machine Safety Overview**
Wed, March 16, 2022 @ 10am
- **TBD**
Wed, April 20, 2022 @ 10am
- **TBD**
Wed, May 18, 2022 @ 10am

Visit our **Resources** page on reynoldsonline.com

Updated Website

ReynoldsOnline.com

Resources Section includes

- Blog articles
- Podcast
- Videos
- News

The screenshot displays the website for The Reynolds Company Electrical Supply. At the top, the company logo is on the left, and navigation links for 'SERVICES & SOLUTIONS', 'RESOURCES', 'TRAINING & EVENTS', and 'ABOUT US' are on the right. A search bar with a 'SEARCH' button and a 'SIGN IN' button are also present. A dark banner below the header states: 'Our New Orleans branch will remain closed until power is restored. [Learn more.](#)'

The main content area is titled 'RESOURCES' and includes filter options: 'Filter By Category' (set to 'Show All') and 'Filter By Type' (set to 'Show All'), along with a 'CLEAR FILTERS' button. The resources are displayed in a grid of six cards:

- TRC Talks**: a podcast on industrial automation. Card title: 'LOTO Part 1 - The Components of Lockout Tagout'. Date: August 27, 2021 | Safety | Podcasts. Description: 'In this episode of TRC Talks, Brad Freeman speaks with Tim Bohmann from Rockwell Automation on the topic of Lockout Tagout. LOTO is a crucial component of any safety...'.
- TechTalk Online Seminars**: Card title: 'TechTalk - Spectrum Controls'. Date: August 26, 2021 | Automation | Training & Events. Description: 'In this TRCTechTalk, we are joined by a guest presenter - Spectrum Controls.'
- User Group**: Card title: 'User Group - Introduction to InnovationSuite'. Date: August 19, 2021 | Automation | Training & Events. Description: 'FactoryTalk software is built for supporting an ecosystem of advanced industrial applications, including IoT. It all starts at the edge where manufacturing happens and scales from on-...'.
- TechTalk Online Seminars**: Card title: 'TechTalk - Lockout/Tagout Program Management'. Date: August 12, 2021 | Safety | Training & Events. Description: 'Watch our TechTalk to learn how ScanESC'.
- Fiix**: A ROCKWELL AUTOMATION COMPANY. Card title: 'Introducing Fiix'. Date: August 04, 2021 | Services | Featured Products. Description: 'Fiix is a Computerized Maintenance'.
- TechTalk Online Seminars**: Card title: 'TechTalk - PlantPAX System Estimator'. Date: July 29, 2021 | Networking | Training & Events. Description: 'Watch our TechTalk to learn how to use the'.

Our Presenters

Mike Masterson

Automation Specialist
The Reynolds Company

Wayne Welk

Automation Specialist
The Reynolds Company

PanelView HMI Terminals

Visualization: Graphic Terminals Portfolio



PanelView 800

- Supports screens in portrait and landscape modes
- Optimized for compatibility with **Micro800** and **MicroLogix** controllers



PanelView Plus 6

- 7" to 15" screen sizes
- Built in Ethernet communications
- Built in Serial communications
- Add-on Serial communications

FactoryTalk View
Studio



PanelView Plus 7

- 4" to 19" with wide screen options
- Built in Ethernet communications with DLR
- Standard & Performance versions

FactoryTalk View
Studio



PanelView 5310/5510

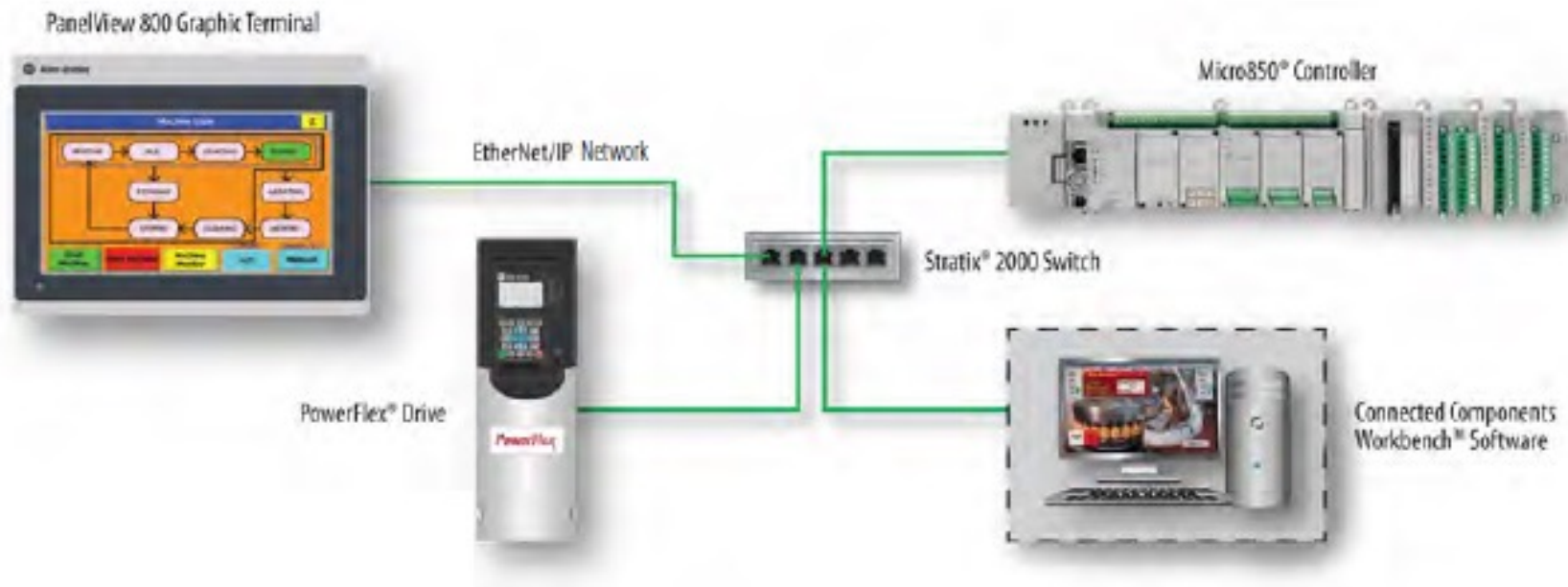
- 7" to 19" with wide screen options
- EtherNet/IP with DLR
- Support for only Logix controllers



Component Class

This class combines a simple, powerful control core, a full suite of associated components, and a dedicated set of class leading application development tools. These features provide enough control to meet machine control and end-customer requirements in the shortest possible time.

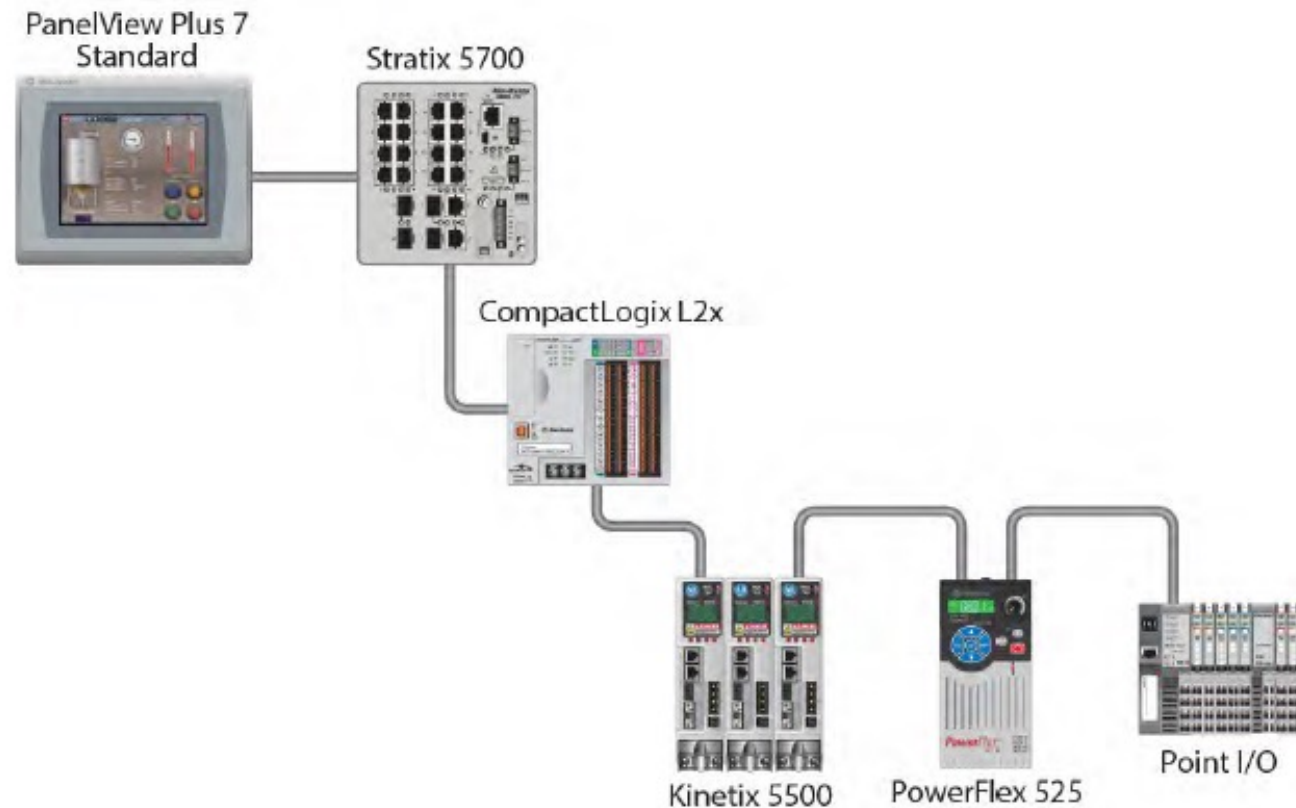
Micro800® with PanelView 800



Small Control Class

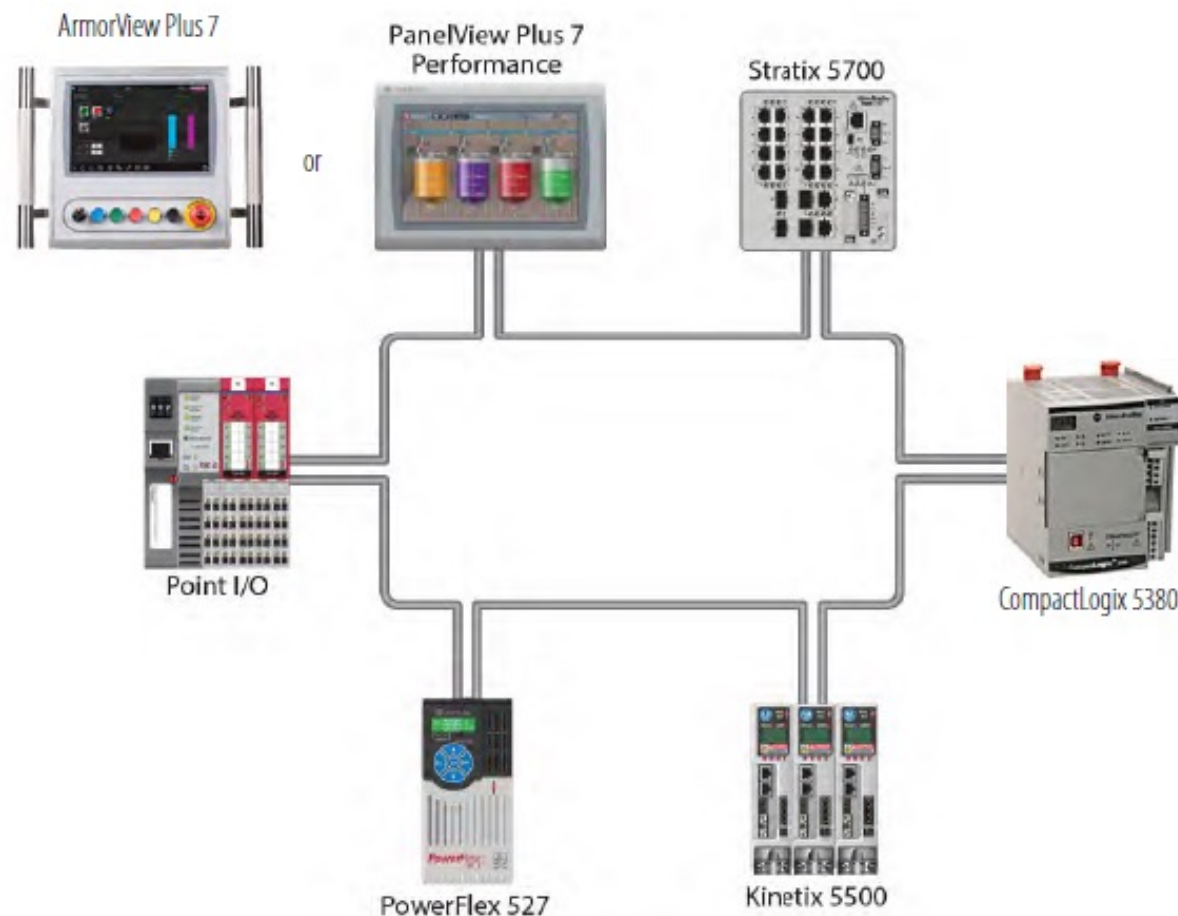
This scalable control system helps machine builders and their customers cost-effectively match their application needs and standardize on one control platform while receiving real-time information for smaller applications.

Linear Configuration



Integrated Architecture Class

The **Integrated Architecture** system is unique in that it offers scalable, integrated safety, motion control, and visualization capabilities that are ideal for machine builders and end users who want one control and development environment, regardless of the application size or complexity. Large control systems integrate all control disciplines - process batch, discrete, drives, safety, and motion - into one connected and segmented, plant-wide infrastructure that uses a common design environment for all automation disciplines.




PanelView™ Plus 6 Terminal Discontinuation

PanelView™ Plus 6 terminals are currently planned to be discontinued on the dates listed below*, **however, recent increases in demand may move up discontinuation dates.**



All 4" Terminals – **12/30/2022***
(All catalog numbers including
Compact & Low Reflective)

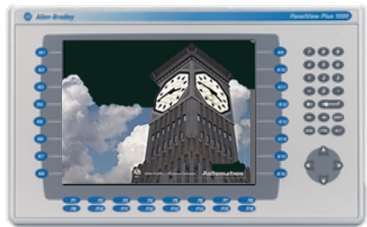


 All 6" Terminals –
Discontinued




 All 7" Terminals –
Discontinued

Several discontinued catalogs still
have stock globally and will be
sold up to one year after
discontinuation on first come basis




10" Terminals (Including Compact)
 Touch – **Discontinued**
Keypad/Combo – **09/30/2022***

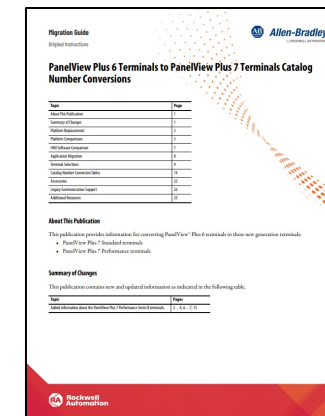


12" Terminals
 Touch – **Discontinued**
Keypad/Combo – **09/30/2022***



15" Terminals
 Touch – **Discontinued**
Keypad/Combo – **09/30/2022***

Migrate customers to PVP7



Remanufacturing Services offered
for MRO business

PanelView Plus 7 Performance

Why are we releasing a Series B PanelView Plus 7 Performance product?

Series A runs on Windows® CE 6.0 operating system, which is no longer fully supported

Series A uses aging hardware with a shrinking supply chain

We developed the PanelView Plus 7 Performance Series B product to help protect our customers who have invested in PanelView Plus hardware and FactoryTalk® View Machine Edition software.

Major Improvements with Series B:

Updated to run a modern operating system

Updated hardware with improved long-term supply chain support

Enhanced product security

Support for modern peripherals

Significantly increased user storage

Firmware update alignment with other Allen-Bradley® products

Improved customer ability to resolve firmware corruption issues



PUBLIC

PanelView Plus 7 Performance


Series B

- PanelView Plus 7 Performance Series B is currently in development and is now estimated to release March 2022*.
- **PanelView Plus 7 Performance Series B Specs:**
 - Operating system: Windows 10 IoT Core
 - Software: FactoryTalk® View Machine Edition Station
 - CPU: Intel x86, 1.46 Ghz, dual core
 - RAM: 4 GB
 - System storage: 19.87 GB (~2GB available for user storage)
 - Web browser: Microsoft Edge (HTML5 compatible)



PanelView Plus 7 Performance

Series B



Standard and widescreen aspect ratios available

Touch only and keypad/touch options available

Mobile ready with VNC* and FactoryTalk® ViewPoint software

Modern web browsing and video playback with Microsoft Edge

Microsoft Office viewers pre-installed*

Optional Products Include:

- Brandless terminals
- Conformally coated terminals
- Stainless steel terminals – 9" & 12"
- On-Machine™ terminals (ArmorView™ Plus 7)

With the embedded PDF Viewer, show:

- User manuals
- Installation manuals
- SOPs (Standard Operating Procedures)

Faceplates and Add-On Instructions available that can save 50–90% of complex screen development time

* not available on initial release

PanelView Plus 7 Performance

Series B

- Unlike The PV+6, the PV+7 is a one-piece design, without the separate logic module and display

Hardware button to restore terminal to the factory default condition (New for Series B)

Installation clamps provide fast and simple Toolless terminal installation and removal

USB Ports for quick upload and download to the terminal
(Series B updates one USB port to USB 3.0)

SD storage card slot for data storage, data logging, recipe management and terminal replication

Embedded dual Ethernet port with DLR connectivity

When Legacy Comms or Serial ports are important: 9300-USBCBL-CP3 and 9300-USBCBL-PM02 for USB to serial conversion

PanelView Plus 7 Performance Series Comparison

Product Features	PanelView Plus 7 Performance Series A	PanelView Plus 7 Performance Series B
Operating System	Microsoft Windows® CE 6.0	Microsoft Windows 10 IoT Core
CPU	Intel x86, Single Core, 1.6 Ghz	Intel x86, Dual Core, 1.46 Ghz
Memory RAM / System Storage	512 MB / 512 MB (80 MB available for user storage)	4 GB / 19.87 GB (~2GB available for user storage)
FactoryTalk Machine Edition	Y (Supports v8+ MER files)	Y (Supports v8+ MER files)
Firmware Update Utility	Firmware Upgrade Wizard	ControlFLASH™ / ControlFLASH Plus™
USB Devices	Minimal support, CE devices only	Support for most Windows 10 IoT Devices
Printer support	Windows CE 6.0 Print Drivers	AirPrint & Internet Printing Protocol (IPP)
FactoryTalk ViewPoint	Y	Y
PDF Viewer	Y (Foxit)	Y (Foxit & MS Edge)
Active X Controls (Email, Datastore Plus, Recipe)	Y	Y (except for Web Browser Active X)
Remote Terminal Control Available	Y - VNC	Y - VNC with SSH Encryption (Not in initial release, to be added later)
FTP Server	Y (CE 6.0 FTP Server)	Y (Win10 IoT Core FTP Server)
Web Browser	Y (MS Internet Explorer)	Y (MS Edge)
Video Playback	Y (MS Media Player)	Y (MS Edge)
Microsoft Office Viewers	Y	Y (Not in initial release, to be added later)
Ethernet Connectivity	Y (DLR Capable)	Y (DLR Capable)
Hazardous Location Rated	Y (UL Class 1 Div 2) (Excluding ArmorView™)	Y (UL Class 1 Div 2) (Excluding ArmorView™)
Power	AC or DC	DC Only
Screen Sizes	6.5", 9"W, 10.4", 12"W, 19"	6.5", 9"W, 10.4", 12"W, 19" (No Change)
Application Limits (Screen count/controllers/alarms)	No limits (based on memory & CPU)	No limits (based on memory & CPU) (No Change)
Catalog numbers	2711P-xxxxx9P	2711P-xxxxx9P (No Change)

PanelView Plus 7 Performance

Series B

Series B terminals maintain the same functionality as Series A terminals, however, the process to complete many actions is updated on Series B. Some examples include:

- **Firmware updates** – Improved experience via ControlFLASH™/ControlFLASH Plus™
- **Control panel** – Improved experience with a Windows 10 IoT Core menu
- **Maintenance mode** – Improved experience with added functionality
- **Restore factory defaults** – Improved experience with added functionality
- **Printer setup** – Improved experience using modern printers
- **File transfers** – Improved experience with increased security
- **Calibration** – Similar experience with improved accuracy



PanelView Plus 7 Performance

Series B

Security Features

- **Windows 10 IoT Core Operating System fully supported by Microsoft**
 - Windows 10 IoT Core is an adaption of Windows 10 Enterprise for the embedded market space. It shares the security advancements of Windows 10 Enterprise, along with regular security updates and patches.
 - Security updates and patches will be fully reviewed/tested by Rockwell Automation before release for use on PanelView Plus 7 Performance
- **Closed system**
 - Add-On software must be reviewed, approved, and signed by Rockwell Automation in-order to be installed on the terminal
 - Windows CE Desktop is no longer available as it is on Series A terminals
- **Sandboxed environments for applications**
 - Terminal integrity is maintained by running applications unique, sandboxed environments. Any abnormal behavior in one application will not affect other applications or the Windows 10 IoT Core operating system.
- **Firewall**
 - Firewall rules adjust automatically based on services that are enabled/disabled. It is not possible to completely turn off the firewall.
- **Password requirements**
 - Password is required to exit the Machine Edition environment
 - Admin password is required to make critical system changes
- **VNC includes SSH encryption***
- **Secure File Transfer Protocol (SFTP)**
- **UWP Apps ***
 - Future capability may be added to allow UWP apps from the Microsoft Store to be installed on the terminal. These apps are approved by Microsoft and are known to be secure.
- **Protection from autorun programs**
 - Autorun programs will not run on Series B terminals
- **Updated modern web browser**
 - Internet Explorer web browser on Series A is updated to Microsoft Edge Browser running in a sandboxed environment on Series B

PanelView™ 5310

A right-sized visualization solution for smaller applications

FEATURES

- Connect to one **ControlLogix®** or **CompactLogix™** processor through embedded Ethernet port
- On-screen navigation button easily displays information
- Up to 100 screens
- Five screen size options: 6", 7 W", 9 W", 10", 12 W"
- Two USB hosts, one USB device, one SD card
- c-UL-us, CE, KC, RCM, EAC, RoHS
- NEMA and UL Type 12, 13, 4X, also rated IP66 as classified by UL



PanelView™ 5510

Designed for OEMs and end users who require a high degree of integration between their HMI and controller

FEATURES

- Touch-only or touch+ keypad option
- Connect to as many as four ControlLogix® or CompactLogix™ processors
- Up to 500 screens*
- Two Ethernet ports with internal switch and device level ring (DLR) support
- Navigation button below the screen opens configurable navigation menus
- Seven screen size options: 7", 7 W", 9 W", 10", 12 W", 15", 19"
- Two USB hosts, one USB Device, one SD card
- c-UL-us listed; Class 1, Div 2, Groups A, B, C, D; KCC; CE (EMC); CE (LVD); RoHS; RCM
- NEMA and UL Type 12, 13, 4X, also rated IP66 as classified by UL; EAC, Marine



* With V8 Firmware

Studio 5000® automation and design environment

Studio 5000® Architect™

Studio 5000 Logix Designer®

Studio 5000 View Designer®

Studio 5000® Application Code Manager

Studio 5000® Logix Emulate™

Studio 5000® Simulation Interface™



Simplified system design and data exchange



Collaborative system programming and configuration



Integrated HMI with Logix



System reuse and project builds



Virtual design and operator training systems



Logic connection to simulation models

Studio 5000 View Designer software

Included in Studio 5000 environment at no extra cost

Project Explorer
to organize
project

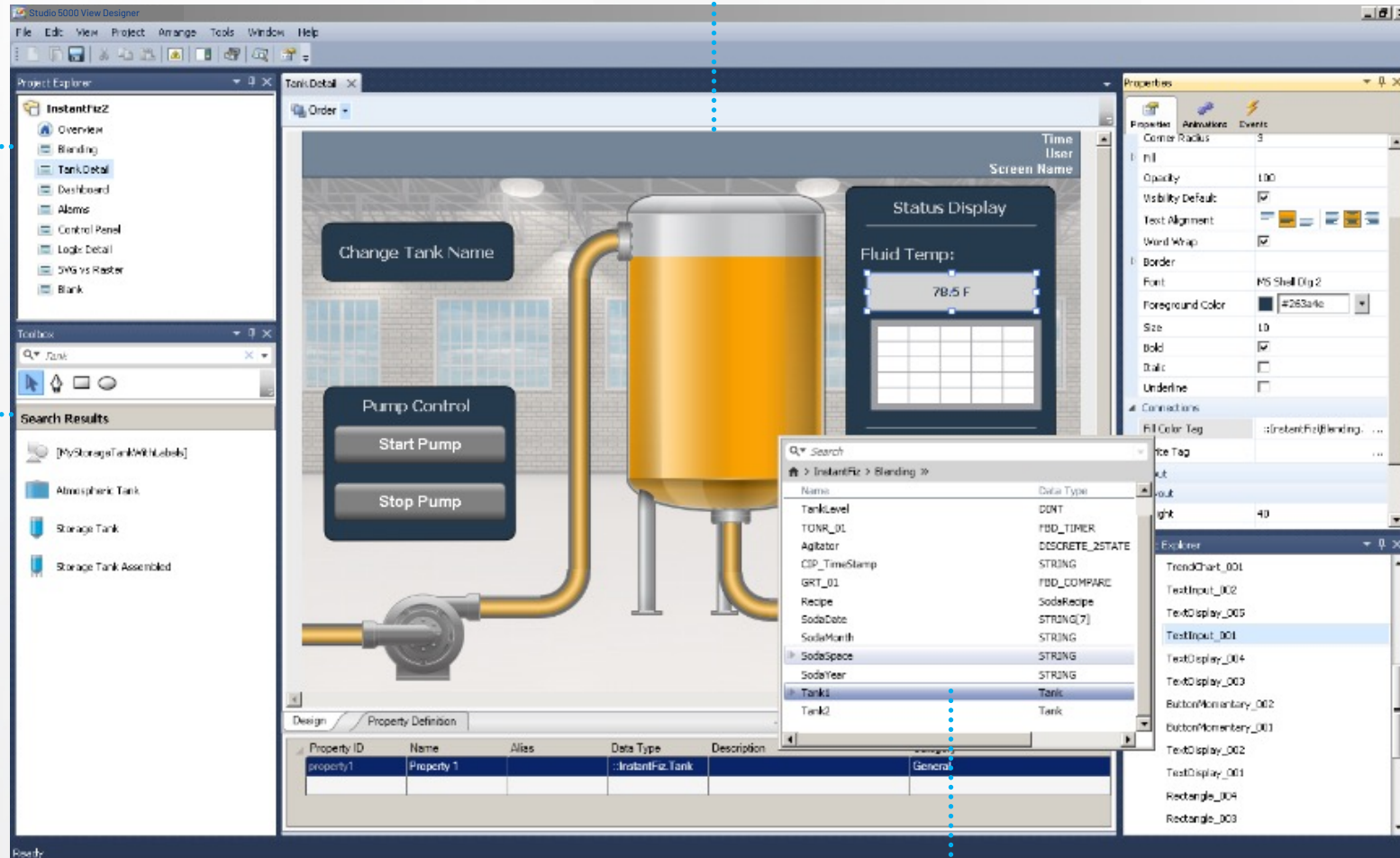
Searchable
toolbox for all
project elements

Graphical design of screens

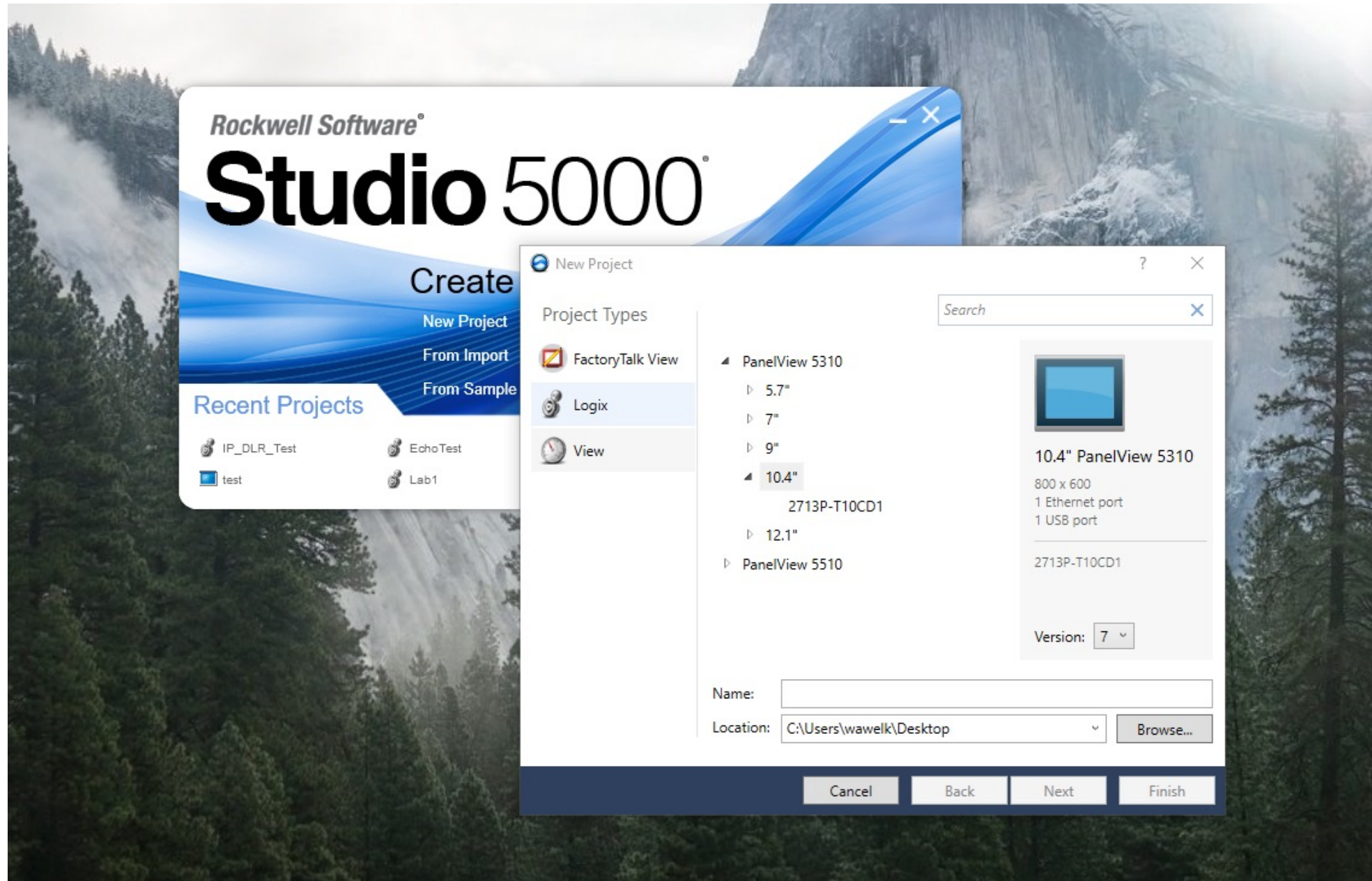
Property pane to
configure elements

Graphics explorer
to find and select
elements

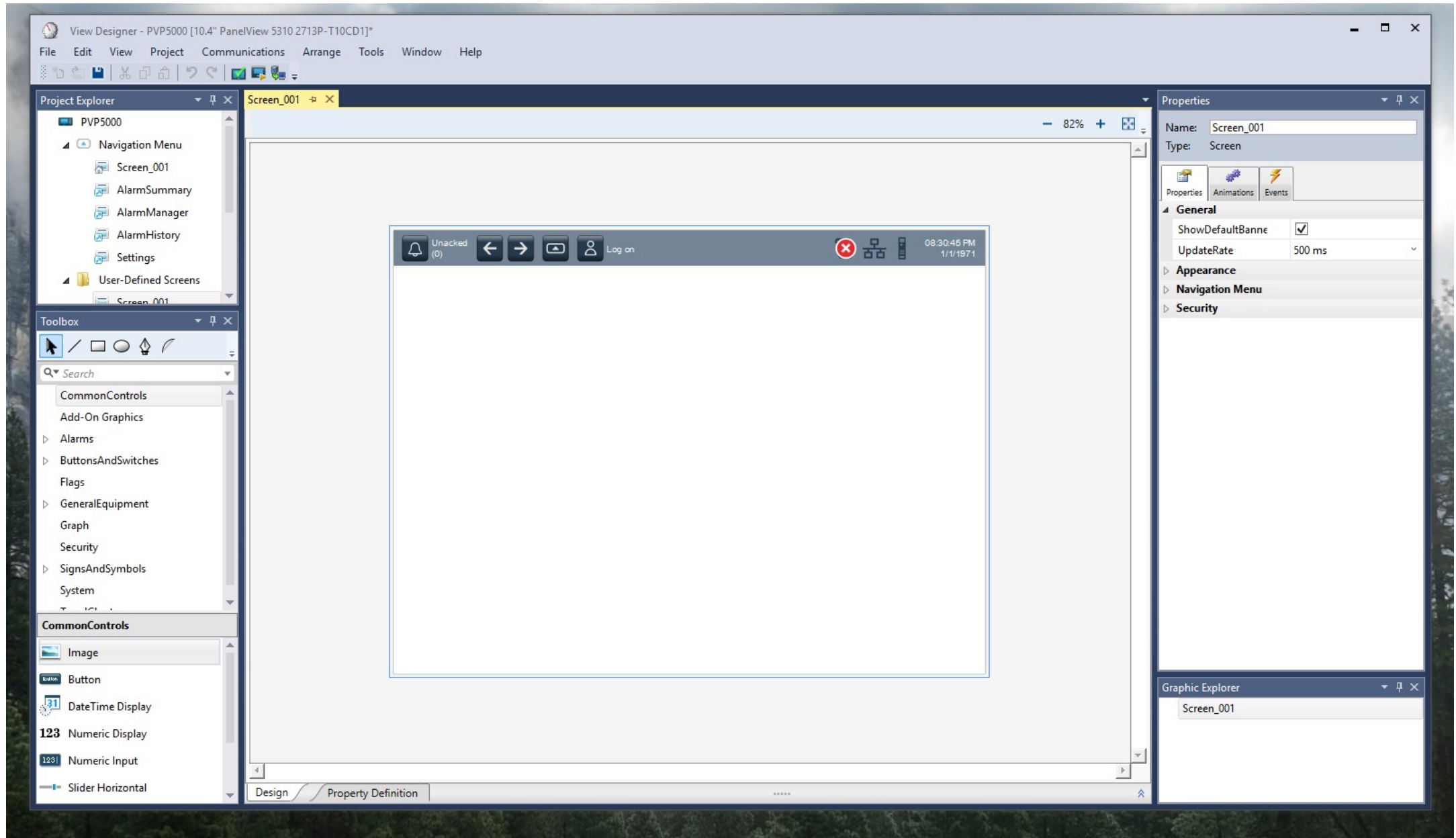
Tag browser to
search and select
Logix tags



Studio 5000 View Designer



Studio 5000 View Designer



Industrial Computers & Thin Clients

Visualization: Industrial Computers



VersaView 5400 Integrated Display Computer

- Quad core Intel Atom E3845 CPU, 4 GB of RAM and a 128 GB solid-state drive
- 12", 15" & 22" Displays
- Windows 7, WES 7, and Windows 10 operating systems



VersaView 5400 Non-Display Computer

- Quad core Intel Atom E3845 CPU, 4 GB of RAM and a 128 GB solid-state drive
- Windows 7, WES 7, and Windows 10 operating systems



6181P Integrated Display Computer

- Fourth Generation Intel Core™ i-series 64-bit processor
- 12", 15", 17" & 19" Displays
- Windows 7 pro SP1, Windows Server 2008 R2 SP1, and WES 7 operating systems



6181X Hazardous Location Integrated Display

- IECEx, ATEX, and UL certifications required for hazardous locations
- 12" Display
- Windows 10 IoT Enterprise or Windows 7 Professional operation systems

Visualization: Industrial Thin Clients



VersaView 5200 Integrated Display Thin Client

- 12", 15" & 22" Displays
- ThinManager Ready



VersaView 5200 Single Display

- Single DisplayPort video output
- ThinManager Ready



VersaView 5200 Dual Display

- Dual external display output ports that support up to 2560 x 1600 displays
- ThinManager Ready



VersaView 5200 Dual & Multi 4k Display

- Dual and Multi 4K video output with 3840 x 2160 maximum resolution
- Offers both a DisplayPort and an HDMI port for flexibility
- ThinManager Ready

ASEM™ 6300 industrial PCs

Rockwell Automation global brand for industrial PCs

- Rockwell Automation acquired ASEM in April 2020 resulting in the following
 - The Allen-Bradley® ASEM™ 6300 family of Industrial PCs has expanded to include a configurable family of PCs, monitors and thin clients
 - ASEM 6300 Industrial PCs are available through Rockwell Automation authorized distributors throughout the world
- 6300 is the Bulletin number and it covers the entire ASEM family
 - 6300P panel PCs
 - 6300B box PCs
 - 6300T thin client PCs
 - 6300M industrial monitors



ASEM 6300 industrial PCs

Tailored to handle your unique applications

6300B

**i class wall mount
box PCs**



6300B

**Atom class book
mount
box PCs**



6300P

industrial panel computers



6300B

**i class book mount
box PCs**



Visualization: Industrial Servers



VersaVirtual Appliance

- A hyperconverged (compute, networking and storage) appliance
- One server to run multiple operating systems
- Pre-configured virtualization environment
- Rack-mounted server
- Can run up to 15 applications



Stratus ztc Edge

- A hyperconverged (compute, networking and storage) appliance
- Dual servers offer Hot Standby or Fault Tolerant configuration
- Pre-configured virtualization environment
- Can run up to 12 applications



Stratus ftServer

- Fault Tolerant
- Single system with fully duplexed hardware
- Hot-swappable customer replaceable units (CRU)
- Rack-mounted server



Industrial Data Center

Pre-engineered, scalable infrastructure offering with all of the hardware you need to run multiple operating systems and multiple applications off of virtualized servers.

Visualization: Scalable Compute/Edge



1756 Compute

- High-speed access to the ControlLogix controller over the backplane
- Intel Atom Dual-core 1.46 GHz processor
- 32 GB mSATA
- Windows 10 IoT Enterprise 64-bit, Linux 32-bit (Debian 8.9)
- Integrated DisplayPort



CompactLogix 5480

- Logix based real-time controller that runs an instance of Windows 10 IoT Enterprise
- Supported in Studio 5000 Logix Designer version 30



VersaView 5400

- Quad core Intel Atom E3845 CPU, 4 GB of RAM and a 128 GB solid-state drive
- Windows 7, WES 7, and Windows 10 operating systems





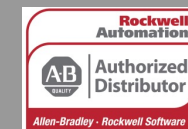
Visualization Solutions

PanelView Terminals (including ArmorView Plus 7 Terminals) and
Industrial Computers, Monitors, and Thin Clients

Publication# View-SG001



Allen-Bradley
by ROCKWELL AUTOMATION





THE REYNOLDS
COMPANY
ELECTRICAL SUPPLY

www.reynoldsonline.com