

KwikSplice cable channel

With an innovative dove tail splice design, Eaton's B-Line series KwikSplice cable channel is designed for fast installation, reduced complexity and improved versatility.

The system is ideal in a variety of commercial and industrial applications.

- Commercial buildings
- Institutional buildings
- Data centers
- Healthcare and hospitals
- Manufacturing facilities
- Petrochemical

Installs quickly and easily

The KwikSplice cable channel dove tail side rail and guided splice plate system is fast and easy to install. As an added benefit, fittings are shipped pre-assembled with an integrated splice attachment, which helps reduce the total installation time.

Reduces jobsite complexity

Unlike other instrumentation channel tray, the KwikSplice cable channel can be cut and spliced at any point along the tray, simplifying field modification. Plus, it is available with perforated holes along the channel which provides ventilation and NEC heat compliance.

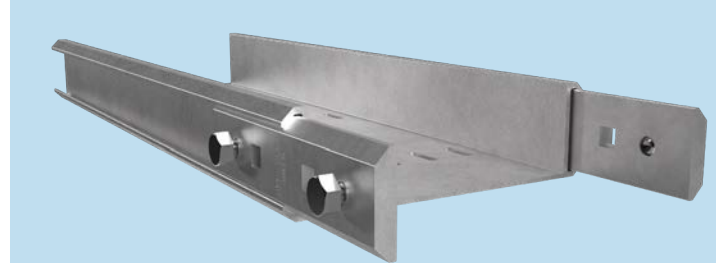
Improved versatility

The system includes an extensive line of quick connect fittings and accessories to provide pathway integrity and versatility.

KwikSplice system pays for itself through support savings

The KwikSplice cable channel comes in 20-foot spans, requiring fewer supports than other channel solutions available today. For example, transitioning from 10 ft. (3m) spans to 20 ft. (6m) spans reduces supports by 50%. Now, multiply the number of cable channels installed on a typical jobsite and the savings really add up.* In fact, the savings often outweigh the cost of the cable channel.

*NEMA VE-2, (section 3.4.1) defines an allowable straight section support span as the following: "straight section support span should not exceed the straight section length". Therefore, to eliminate supports, one option is to increase the length of cable ladder.



The KwikSplice difference - Dove tail side rail and guided splice plate system

- Installs quick and easy
- Superior strength allows for longer spans and higher loads
- Designed for easy field modification - no drilling required!
- Thermal expansion splice plate available



KSCCNA-06-240
Non-Ventilated Cable Channel
Patent pending



KSCCSA-06-240
Ventilated Cable Channel
Patent pending



KSCCA-06-240
Ventilated Cable Channel with Pass Through
Available in Q3 2022
Patent pending

[Eaton.com/KSCC](https://www.eaton.com/KSCC)



Powering Business Worldwide

Eaton
1000 Eaton Boulevard
Cleveland, OH 44122
United States
Eaton.com
B-Line Division
509 West Monroe Street
Highland, IL 62249
Eaton.com

© 2022 Eaton
All Rights Reserved
Printed in USA
Pub. No. SA302029EN
February 2022

Eaton is a registered trademark.

All other trademarks are property of their respective owners.

Follow us on social media to get the latest product and support information.

