

## Learning Series

---

# Network and Security Update

March 2023



# Online Technical Seminars

Register to receive a calendar invite



## Tech Talks

Month	Description
January 25 <sup>th</sup>	Grace Technologies – GraceSense
February 22 <sup>nd</sup>	Industrial CyberSecurity with Claroty
March 29 <sup>th</sup>	CyberSecurity with CrowdStrike
April 26 <sup>th</sup>	Automation Weighing Best Practices with Mettler Toledo
May 24 <sup>th</sup>	Cable Cleats for Short Circuit Protection with Panduit
June 21 <sup>st</sup>	VFD Cables: Essential or Overkill presented by Southwire
<a href="https://www.reynoldsonline.com/training-and-events/techtalks">https://www.reynoldsonline.com/training-and-events/techtalks</a>	

## Learning Series

Month	Description
January 12 <sup>th</sup>	Automation Update
February 23 <sup>rd</sup>	FactoryTalk Design Hub
March 16 <sup>th</sup>	Networks and Security Update
April 12 <sup>th</sup>	Topic TBD
May 17 <sup>th</sup>	Topic TBD
June 14 <sup>th</sup>	Topic TBD
<a href="https://www.reynoldsonline.com/training-and-events/learning-series">https://www.reynoldsonline.com/training-and-events/learning-series</a>	

Visit our Resources page on [reynoldsonline.com](https://www.reynoldsonline.com)

# FactoryTalk Hub Seminars



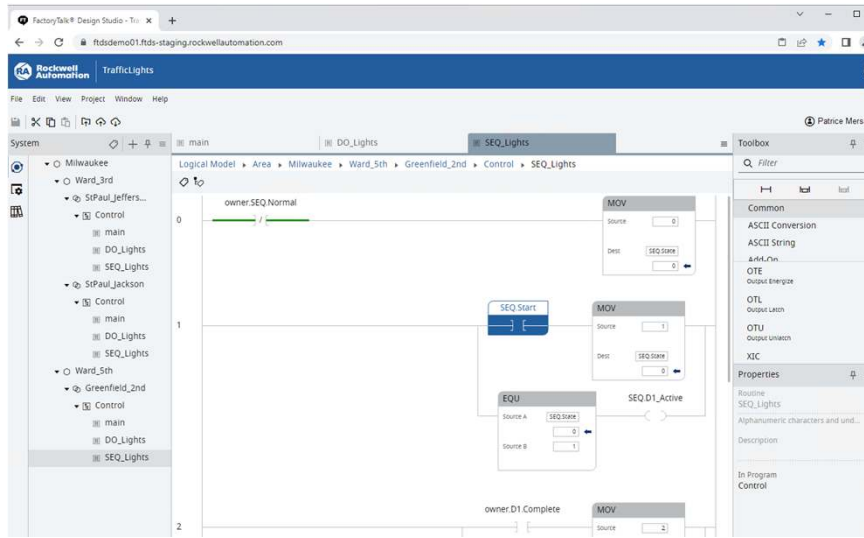
## FactoryTalk Design Studio Seminars

- Houston – March 23
- Houston – April 13
- New Orleans – May 11



## FactoryTalk Optix Seminars

- Dallas – March 22
- Houston – April 12
- Baton Rouge – May 10





Automation Fair®



EXPANDED DATES

**NOVEMBER 6-9, 2023**

Boston, Massachusetts, USA

**We are excited to announce Automation Fair will be a four-day event**

Automation Fair 2023 will be held November 6-9 in Boston, Massachusetts, USA – expanding from a two-day event to a four-day event to bring you a more enhanced, immersive experience.

**We are also integrating the ROKLive Americas event into Automation Fair**

Combining these leading events offers you even more enhanced training, industry-focused solutions, digital transformation strategies, networking with technology experts and industry leaders, and thought leadership presentations – all in one event.



# Our Presenter

**Nick Tamizifar**

Industrial Networking Product Manager  
Rockwell Automation



expanding **human possibility**®

# Next Gen Stratix Fully Managed Switch Overview

Nick Tamizifar • Product Manager • March 2023



PUBLIC

# Network Switch Portfolio Overview

Supporting secure network infrastructure for a wide range of industrial applications



**New Stratix® switch products**

Next generation fully managed switch replacing Stratix® 5700 switch



Stratix® 2000 switches

Stratix® 2500 switches

Stratix® 5700  
ArmorStratix™  
5700\* switches

Stratix® 5200 switches

Stratix® 5400 switches

Stratix® 5800 switches

Stratix® 5410 switches

100M/1G

100M

100M/1G

1G/10G

UNMANAGED

LIGHTLY MANAGED

FULLY MANAGED

HIGH PERF MANAGED



PUBLIC

- \*End of Life on ArmorStratix™ has been announced
- \*\*End of Life on FTNM has been announced

# Value of newer Stratix® switch platforms

*Hardware configurations and features*



## Simplified portfolio and switch selection

- Optimized to simplify switch selection and ordering process
- Streamlined portfolios for Fully and High performance managed



## Expansion of higher port speed product options

- All gig SKUs for Stratix® 5800 switch family
- All gig SKU options being introduced with Stratix® 5200 switch family (same tier as Stratix® 5700 switch)



## Redundant and resilient architecture options expand

- Redundant and resilient system features support in fully and high-performance managed switch tiers.



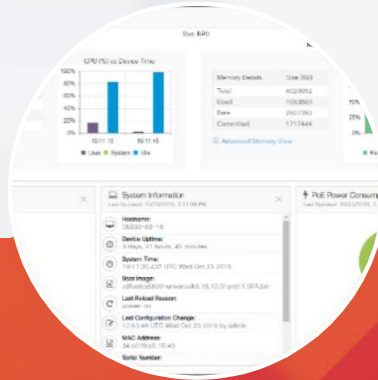
# Value of newer Stratix® switch platforms

*Software functionality and features*



## Fundamental trust features

- Cisco® Cyber Vision Sensor options (Stratix® 5800 switch)
- Ties into Cisco TrustSec software defined segmentation approach
- Fundamental protection against counterfeit hardware and software risks
- Additional encryption options



## Web UI enhancements

- Improved performance
- Enhanced troubleshooting tools
- Fundamental disaster recovery features
- Customizable dashboards






## Common software with Cisco Enterprise switching

- Simplify validation of updates and patches for production environments
- Aligns with Cisco Catalyst® and wireless infrastructure software for Enterprise

# Stratix® Switches – Supporting Digital Transformation

Customer Challenge	Solution	Lightly Managed	Fully Managed	High Performance
Unplanned downtime resulting from day-to-day operations	Loop Prevention	Orange	Orange	Orange
	High Speed Resiliency	Grey	Orange	Orange
	Redundant Networks	Grey	Red	Orange
Unexpected events of today and scaling for future needs	Port Prioritization / Virtual Segmentation	Orange	Orange	Orange
	Network Prioritization / Multi-Disciplined	Grey	Orange	Orange
	Extended Gigabit	Grey	Red	Orange
	Modular options	Grey	Grey	Red
Actionable information allows collaboration w/ remote experts on communications issues	Visibility in Operations Tools	Orange	Orange +	Orange +
	Visibility in IT Tools	Grey	Grey	Orange +
	Common IOS and Programmability	Grey	Red	Red
Risk mitigation reduces costs of network breaches and product recalls	Port Security / Segmentation	Orange	Orange	Orange
	Visibility / NetFlow	Grey	Grey	Orange +
	3rd Party Security Certs (IEC-62443-4-2)	Grey	Red	Red
	Software Defined Segmentation	Grey	Red	Red

-  Features form the basic structure of the product offering
-  Features shifting to lower tiers in support of customer's digital transformation
-  Significant enhancements with new product solutions

# Stratix 5800

High Performance Managed Switch



**Rockwell  
Automation**

# Stratix 5800 switch



The Stratix® 5800 managed switch supports layer 2 switching and layer 3 routing on an all gigabit platform. The design includes both standalone and modular switches. The platform supports up to 26 ports with a variety of copper, PoE and fiber SFP options providing flexibility for high performance network applications.

# Stratix 5800 switch

## Features and Benefits

- All gigabit switch platform for high-performance network support
- Fixed and modular options up to 26 ports providing flexibility and scalability
- Wide variety of copper, fiber, and PoE choices to support a diverse set of applications
- Supports layer 2 access switching and layer 3 routing for use in multiple layers of the architecture
- Supports both IT and OT configuration and management tools allowing users to leverage the expertise of both teams
- Default configurations for industrial applications providing easy setup and optimized performance
- Robust set of switching, routing and security features to meet a broad spectrum of application needs

## Optimized Integration

- Studio 5000® Add-on Profiles (AOPs) enable premier integration into the Rockwell Automation® Integrated Architecture® system
- Predefined named Logix tags for monitoring and port control
- FactoryTalk View faceplates help to enable status monitoring and alarming
- Embedded Cisco® technology, including IOS-XE operating system, helps enable integration with the enterprise network



# Stratix 5800 switch hardware

- Fixed or modular base switch
  - 10 all gigabit ports
    - 8 copper ports or PoE ports (optional)
    - 2 SFP slots (supports copper and fiber SFPs)
- Single expansion module (on modular switch base)
  - 8-port or 16-port module
  - Combinations of copper, PoE, and SFP slots
- Separate hardware switch and expansion modules to support “advanced” features (optional)
- Secure Digital (SD) flash card (optional)
  - 1784-SDHC8
- Dual power inputs
- 2 alarm inputs and 1 output
- RJ45 or mini-USB console port
- 2 USB ports



# Stratix 5800 catalog options

Stratix 5800 Catalog Structure							
Switches	Total ports	RJ45 ports	PoE/PoE+ ports	SFP slots	Modular	Features	Firmware Type
1783-MMS10B	10	8 GE		2 GE	-	Standard	Layer 2
1783-MMS10BE	10		8 GE	2 GE	-	Standard	Layer 2
1783-MMS10	10	8 GE		2 GE	Yes	Standard	Layer 2
1783-MMS10E	10		8 GE	2 GE	Yes	Standard	Layer 2
1783-MMS10EA	10		8 GE	2 GE	Yes	Advanced	Layer 2
1783-MMS10R	10	8 GE		2 GE	Yes	Standard	Layer 3
1783-MMS10ER	10		8 GE	2 GE	Yes	Standard	Layer 3
1783-MMS10EAR	10		8 GE	2 GE	Yes	Advanced	Layer 3
Expansion Modules							
1783-MMX8T	8	8 GE			NA	Standard	NA
1783-MMX8E	8		8 GE		NA	Standard	NA
1783-MMX8EA	8		8 GE		NA	Advanced	NA
1783-MMX8S	8			8 GE	NA	Standard	NA
1783-MMX8SA	8			8 GE	NA	Advanced	NA
1783-MMX6T2S	8	6 GE		2 GE	NA	Standard	NA
1783-MMX16T	16	16 GE			NA	Standard	NA
1783-MMX16E	16		16 GE		NA	Standard	NA
1783-MMX14T2S	16	14 GE		2 GE	NA	Standard	NA

Capability Key: B - Non-Expandable Base | E - PoE Capable | A - Advanced | R - Layer 3 Image | T - Copper Ports | S - SFP Ports

# Stratix 5800 module compatibility

Stratix 5800 switches and expansion module compatibility									
Catalog number	1783-MMX8T	1783-MMX8E	1783-MX8EA	1783-MMX8S	1783-MMX8SA	1783-MMX6T2S	1783-MMX16T	1783-MMX16E	1783-MMX14T2S
1783-MMS10B	No expansion module support								
1783-MMS10BE	No expansion module support								
1783-MMS10	Supported	Not supported	Not supported	Supported	Not supported	Supported	Supported	Not supported	Supported
1783-MMS10E	Supported	Supported	Not supported	Supported	Not supported	Supported	Supported	Supported	Supported
1783-MMS10EA	Supported	Supported	Supported	Supported	Supported	Supported	Supported	Supported	Supported
1783-MMS10R	Supported	Not supported	Not supported	Supported	Not supported	Supported	Supported	Not supported	Supported
1783-MMS10ER	Supported	Supported	Not supported	Supported	Not supported	Supported	Supported	Supported	Supported
1783-MMS10EAR	Supported	Supported	Supported	Supported	Supported	Supported	Supported	Supported	Supported

Capability Key: B – Non-Expandable Base | E – PoE Capable | A – Advanced | R – Layer 3 Image | T – Copper Ports | S – SFP Ports





# Questions?

expanding **human possibility**<sup>®</sup>



Stratix 5200



**Rockwell  
Automation**



PUBLIC

# Stratix® 5200 switch overview

- Target: Q2 2023, All SKUs
- Fixed (non-modular) managed switch platform
  - 6, 10 and 20 port versions
- Layer 2 firmware (No Layer 3 planned)
  - Base or Full firmware with options for DLR and NAT
- Stratix® 5700 switch feature set\*, Plus:
  - IOS-XE operating system (same as Stratix® 5800 switch)
  - New User Web UI
  - PRP
    - 2 gig uplinks or all gig option
- Secure Digital (SD) flash card (optional)
- Dual power inputs
- Premier integration to the Integrated Architecture® system
- Faceplates and AOPs planned for release



\* Some operations will differ



PUBLIC

# Stratix® switch portfolio

## Product lifecycle and migration

### Product lifecycle status definitions

- **ACTIVE:** Most current offering within a product category
- **ACTIVE MATURE:** Product is fully supported, but a newer product or family exists. Gain value by migrating.
- **END OF LIFE:** Discontinued date announced – actively execute migrations and last time buys. Product generally orderable until the discontinued date\*
- **DISCONTINUED:** Product no longer manufactured or procured\*\*. Repair/exchange services may be available



Product	Lifecycle	Modernization	Remark
Stratix® 2000 switch	Active	Stratix® 2500 and Stratix® 5200 switches	Consider value of managed switches
Stratix® 6000 switch	Discontinued	Stratix® 2500 and Stratix® 5200 switches	
Stratix® 2500 switch	Active		
Stratix® 5200 switch	New		Launch in Spring 2023
Stratix® 5700 switch	Active Mature	Stratix® 5200 and Stratix® 5800 switches	Expect to transition to EOL stage in Spring 2024
Stratix® 5400/5410 switch	Active		
Stratix® 5800 switch	New	All Gig, New IOS-XE, Web UI	Modular design
Stratix® 8000 switch	Discontinued	Stratix® 5800 or Stratix® 5200 switches	Modular offerings in Stratix® 5800 switches
FactoryTalk® Network Manager™ software	End of Life	Network Topology features coming in FactoryTalk® Linx 6.31.00 software, alarming support with version 33 or newer Logix controllers and Stratix® switches, Cisco DNA Center support for Stratix® switches coming soon, other technology partner options	No direct migration path, but several suggested options depending on features being used.

# Stratix® 5200 switch catalog structure

Ref #	Catalog number	Stratix® 5200 switch description	Total ports	Combo ports	SFP slots	Copper ports	FW notes	1588	Ring support	PRP	NAT
1	1783-CMS6B	4 cu 100 ports, 2 SFP 100/1000 slots, Base FW	6		2GE	4FE	Base		REP Ring		
2	1783-CMS6P	4 cu 100/1000 ports, 2 SFP 100/1000 slots, Full FW	6		2GE	4GE	Full	Yes	REP Ring		
3	1783-CMS10B	8 cu 100 ports, 2 Combo 100/1000 slots, Base FW	10	2GE		8FE	Base		REP Ring		
4	1783-CMS10P	8 cu 100/1000 ports, 2 Combo 100/1000 ports, Full FW	10	2GE		8GE	Full	Yes	REP Ring		
5	1783-CMS10DP	8 cu 100/1000 ports, 2 SFP 100/1000 slots, Full FW	10	2GE		8GE	Full	Yes	REP Ring, DLR Ring		
6	1783-CMS10DN	8 cu 100/1000 ports, 2 combo 100/1000 ports Full FW DLR / PRP / NAT	10	2GE		8GE	Full	Yes	REP Ring, DLR Ring	Yes	Yes
7	1783-CMS20DB	18 cu 100 ports, 2 combo 100/1000 ports, Base FW DLR	20	2GE		18FE	Base		REP Ring, DLR Ring		
8	1783-CMS20DP	18 cu 100/1000 ports, 2 combo 100/1000 ports Full FW - DLR	20	2GE		18GE	Full	Yes	REP Ring, DLR Ring		
9	1783-CMS20DN	18 cu 100/1000 ports, 2 combo 100/1000 ports Full FW DLR / PRP / NAT	20	2GE		18GE	Full	Yes	REP Ring, DLR Ring	Yes	Yes

# How will the Stratix® 5200 switch line up (Preliminary)

Feature	Stratix® 2500 switch	Stratix® 5700 Lite switch	Stratix® 5700 Full switch	Stratix® 5200 Base switch	Stratix® 5200 Full switch (17.11)	Stratix® 5800 switch
<b>Switching</b>						
QoS	Basic	No	Yes	Yes	Yes	Yes
Gigabit Downlinks	No	Select HW	Select HW	No	Yes	Yes
Layer 3 Routing	No	No	No	No	No	Yes
DLR	No	Select HW	Select HW	No	Select HW	Yes (17.11)
CIP Sync - 1588	Passthrough Only	Passthrough Only	Yes	Passthrough Only	Yes	Yes
VLANs	Yes	Yes	Yes	Yes	Yes	Yes
NAT	No	No	Select HW	No	Select HW	Yes
Flexlinks	No	No	Yes	No	No	No
PRP	No	No	No	No	Select HW	Yes
<b>Security</b>						
Port Security	Yes	No	Yes	Yes	Yes	Yes
Access Control Lists (ACLs)	No	Yes	Yes	802.1x	Yes	Yes
62443-4-2 Cert	No	No	No	No	Yes	Yes

# How will the Stratix® 5200 switch line up (Preliminary)

Feature	Stratix® 2500 switch	Stratix® 5700 switch - Lite	Stratix® 5700 switch - Full	Stratix® 5200 switch - Base	Stratix® 5200 switch - Full (17.11)	Stratix® 5800 switch
<b>Configuration and Troubleshooting</b>						
Device Manager	Yes	Yes	Yes	No	No	No
NEW WebUI	No	No	No	Yes	Yes	Yes
AOP (CIP™)	Yes	Yes	Yes	Yes	Yes	Yes
Faceplates	Yes	Yes	Yes	Yes	Yes	Yes
SD Card		Yes	Yes	Yes	Yes	Yes
DHCP Per Port	Yes	Yes	Yes	Yes	Yes	Yes
Cisco TrustSec	No	No	No	No	No	Select HW

## Ease of Migration from Stratix® 5700 to Stratix® 5200 switch – Under Evaluation/Development

- Documented Migration Guide to support the process
- Ability to easily transfer Stratix® 5700 switch configs to Stratix® 5200 switch configs
- Inclusion of Stratix® 5200 switch in CPwE documentation

# Stratix® 5200 switch specifications (preliminary)

	1	2	3	4	5	6	7	8	9
	1783- CMS6B	1783- CMS6P	1783- CMS10B	1783- CMS10P	1783- CMS10DP	1783- CMS10DN	1783- CMS20DB	1783- CMS20DP	1783- CMS20DN
Inrush current, max	10 A for 7 ms with 12V input 6 A for 6 ms with 24V input 6 A for 6 ms	10 A for 7 ms with 12V input 6 A for 6 ms with 24V input 6 A for 6 ms	10 A for 7 ms with 12V input 6 A for 6 ms with 24V input 6 A for 6 ms	10 A for 7 ms with 12V input 6 A for 6 ms with 24V input 6 A for 6 ms	10 A for 7 ms with 12V input 6 A for 6 ms with 24V input 6 A for 6 ms	10 A for 7 ms with 12V input 6 A for 6 ms with 24V input 6 A for 6 ms	10 A for 7 ms with 12V input 6 A for 6 ms with 24V input 6 A for 6 ms	10 A for 7 ms with 12V input 6 A for 6 ms with 24V input 6 A for 6 ms	10 A for 7 ms with 12V input 6 A for 6 ms with 24V input 6 A for 6 ms
Power Input	1.6 A with 12V input 0.8 A with 24V input 0.4 A with 48V input	1.6 A with 12V input 0.8 A with 24V input 0.4 A with 48V input	2.0 A with 12V input 1.0 A with 24V input 0.5 A with 48V input	2.0 A with 12V input 1.0 A with 24V input 0.5 A with 48V input	3.2 A with 12V input 1.6 A with 24V input 0.8 A with 48V input	3.2 A with 12V input 1.6 A with 24V input 0.8 A with 48V input	4.2 A with 12V input 2.6 A with 24V input 1.3 A with 48V input	4.2 A with 12V input 2.6 A with 24V input 1.3 A with 48V input	4.2 A with 12V input 2.6 A with 24V input 1.3 A with 48V input
Power Consumption	14W	14W	17.7W	17.7W	28W	28W	36.7W	36.7W	36.7W
Voltage nominal	12V to 48V	12V to 48V	12V to 48V	12V to 48V	12V to 48V	12V to 48V	12V to 48V	12V to 48V	12V to 48V
Voltage range	9.6V to 60V	9.6V to 60V	9.6V to 60V	9.6V to 60V	9.6V to 60V	9.6V to 60V	9.6V to 60V	9.6V to 60V	9.6V to 60V
Operating Temperature	-40 to 60°C	-40 to 60°C	-40 to 60°C	-40 to 60°C	-40 to 60°C	-40 to 60°C	-40 to 60°C	-40 to 60°C	-40 to 60°C
MAC addresses, max supported	8000	8000	8000	8000	8000	8000	8000	8000	8000
Dual Pwr Supply Input	Yes	Yes	Yes	Yes	Yes	Yes	Yes	Yes	Yes
Pwr Connectors Interchangeable	Yes	Yes	Yes	Yes	Yes	Yes	Yes	Yes	Yes
I/Os	RJ45 Console, USB	RJ45 Console, USB	RJ45 Console, USB	RJ45 Console, USB	RJ45 Console, USB	RJ45 Console, USB	RJ45 Console, USB	RJ45 Console, USB	RJ45 Console, USB



# Product Dimensions: Stratix® 5200 Series Switches (Preliminary)

	Dimensions (Switch only) Inches				Dimensions (Switch, DIN Rail, and Connectors) Inches		
	H	W	D		H	W	D
1783-CMS6B 1783-CMSS6P	5.00	2.55	4.33		5.00	2.55	5.05
1783-CMS10B 1783-CMS10P	5.00	3.00	4.33		5.00	3.00	5.05
1783-CMS10DP 1783-CMS10DN	5.00	3.00	5.08		5.00	3.00	5.80
1783-CMS20DB 1783-CMS20DP 1783-CMS20DN	5.00	4.30	5.08		5.00	4.30	5.80

## Stratix 5200 Spacing for Heat:

- Equal to Stratix 5700 spacing requirements
- Top and bottom 2.0 in (50.8mm)
- Sides: 2.0 inches (50.8mm)
- Front: 2.0 inches (50.8mm)

# Product Dimensions: Stratix® 5200 vs Stratix® 5700 switches (Preliminary)

Port Count	If you had a Stratix® 5700 switch:	Stratix® 5700 switch dimensions (WxHxD - inches)	Stratix® 5200 switch conversion recommendation	Stratix® 5200 switch dimensions (WxHxD - inches)
6	1783-BMS4S2SGL	3.15x5.1x4.51	1783-CMS6B (best option)	2.55x5.0x4.37
6	1783-BMS06SL	2.94x5.1x4.3	1783-CMS6B	2.55x5.0x4.37
6	1783-BMS06TL	2.94x5.1x4.3	1783-CMS6B	2.55x5.0x4.37
6	1783-BMS06SGL	2.94x5.1x4.3	1783-CMS6B	2.55x5.0x4.37
6	1783-BMS06TGL	2.94x5.1x4.3	1783-CMS6B	2.55x5.0x4.37
6	1783-BMS4S2SGA	3.15x5.1x4.51	1783-CMS6P (best option)	2.55x5.0x4.37
6	1783-BMS06SA	2.94x5.1x4.3	1783-CMS6P	2.55x5.0x4.37
6	1783-BMS06TA	2.94x5.1x4.3	1783-CMS6P	2.55x5.0x4.37
6	1783-BMS06SGA	2.94x5.1x4.3	1783-CMS6P	2.55x5.0x4.37
6	1783-BMS06TGA	2.94x5.1x4.3	1783-CMS6P	2.55x5.0x4.37
10	1783-BMS10CL	3.6x5.1x4.3	1783-CMS10B	3.0x5.0x4.37
10	1783-BMS10CGL	3.6x5.1x4.3	1783-CMS10B	3.0x5.0x4.37
10	1783-BMS10CA	3.6x5.1x4.3	1783-CMS10P	3.0x5.0x4.37
10	1783-BMS10CGA	3.6x5.1x4.3	1783-CMS10P	3.0x5.0x4.37
10	1783-BMS10CGP	3.6x5.1x5.05	1783-CMS10P	3.0x5.0x4.37
10	1783-BMS10CGP	3.6x5.1x5.05	1783-CMS10DP	3.0x5.0x4.37
10	1783-BMS10CGN	3.6x5.1x5.05	1783-CMS10DN	3.0x5.0x5.12

**For Stratix® 5200 Spacing** to prevent the switch from overheating, observe the following minimum clearances:

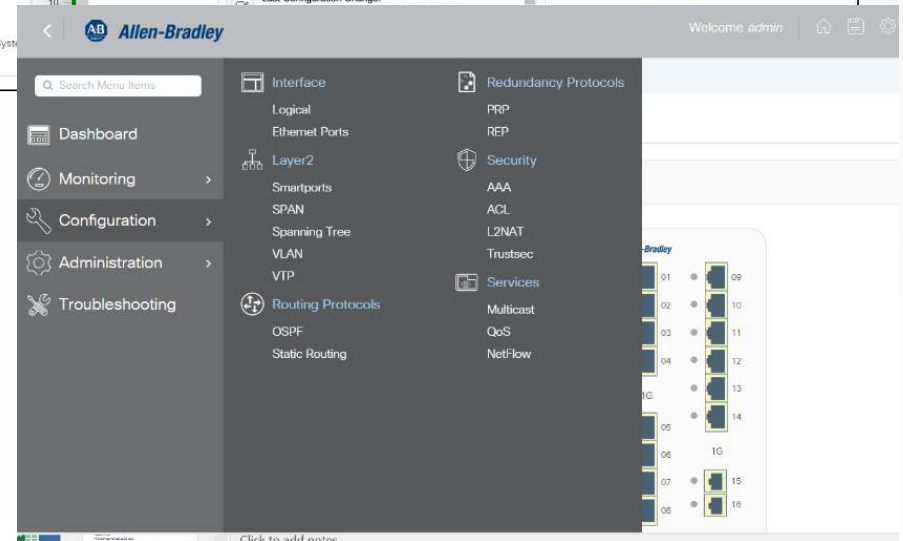
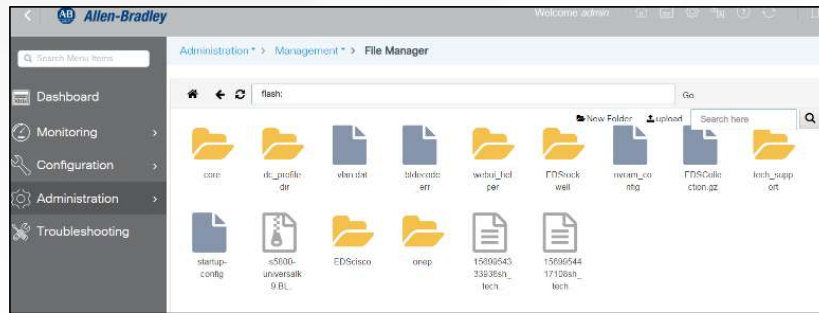
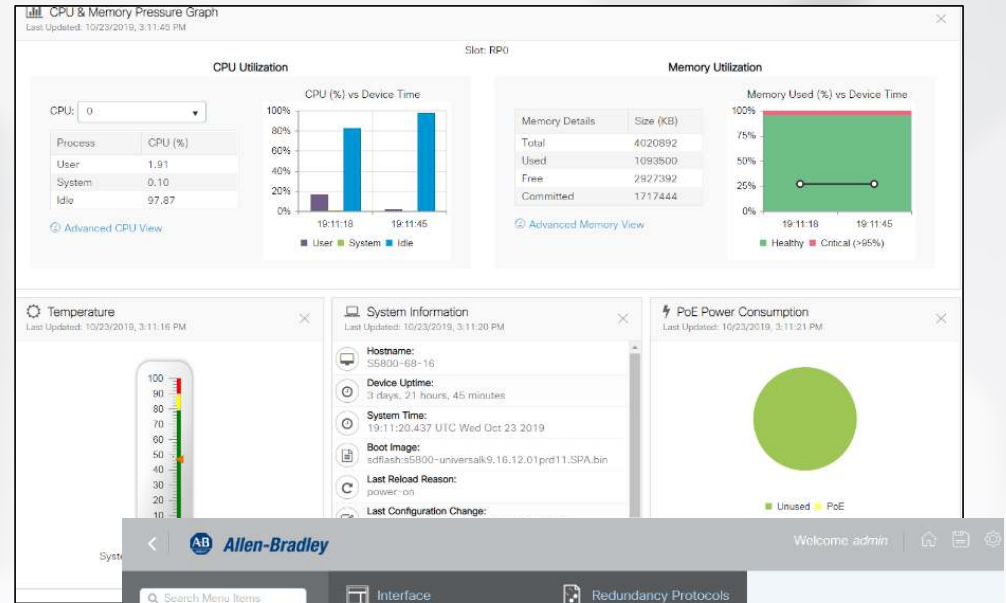
- Top and bottom: 50.8 mm (2.0 in.)
- Sides: 50.8 mm (2.0 in.)
- Front: 50.8 mm (2.0 in.)

**Equal to Stratix® 5700 spacing requirements**

Port Count	If you had a Stratix® 5700 switch:	Stratix® 5700 switch dimensions (WxHxD - inches)	Stratix® 5200 switch conversion recommendation	Stratix® 5200 switch dimensions (WxHxD - inches)
18	1783-BMS12T4E2CGNK	5.0x5.1x5.05	No Conformally Coated Option Available	
18	1783-BMS12T4E2CGP	5.0x5.1x5.05	1783-MMS10EA (Stratix 5800)	4.4x6.0x5.3
18	1783-BMS12T4E2CGL	5.0x5.1x5.05	1783-MMS10E Plus 1783-MMX8	6.2x6.0x5.3
20	1783-BMS20CL	5.0x5.1x5.05	1783-CMS20DB	4.3x5.0x5.12
20	1783-BMS20CGL	5.0x5.1x5.05	1783-CMS20DB	4.3x5.0x5.12
20	1783-BMS20CGN	5.0x5.1x5.05	1783-CMS20DN	4.3x5.0x5.12
20	1783-BMS20CA	5.0x5.1x5.05	1783-CMS20DP	4.3x5.0x5.12
20	1783-BMS20CGP	5.0x5.1x5.05	1783-CMS20DP	4.3x5.0x5.12
20	1783-BMS20CGPK	5.0x5.1x5.05	1783-CMS20DP	4.3x5.0x5.12

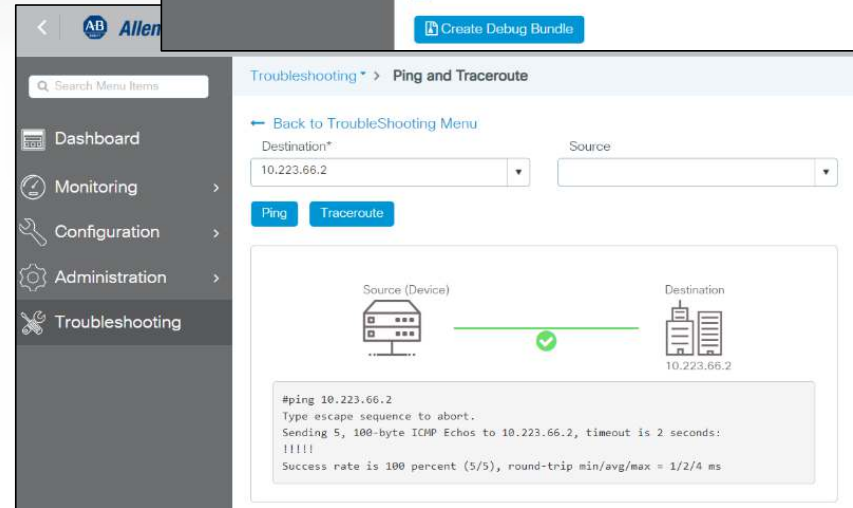
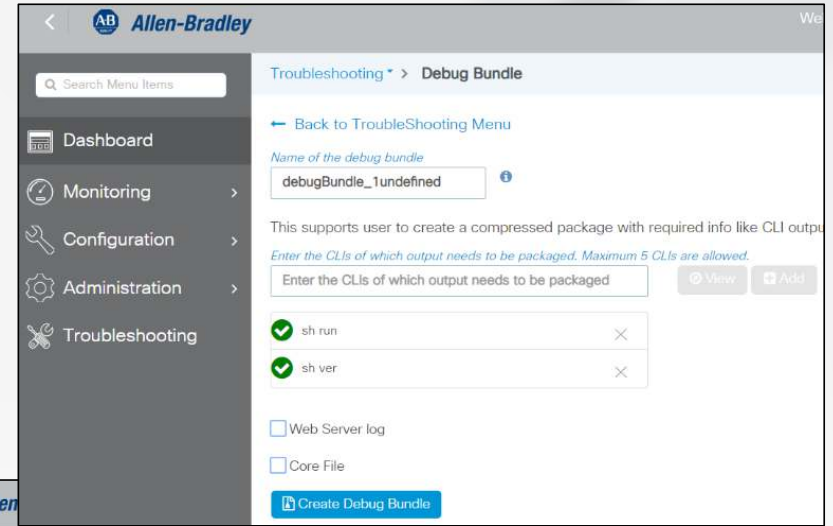
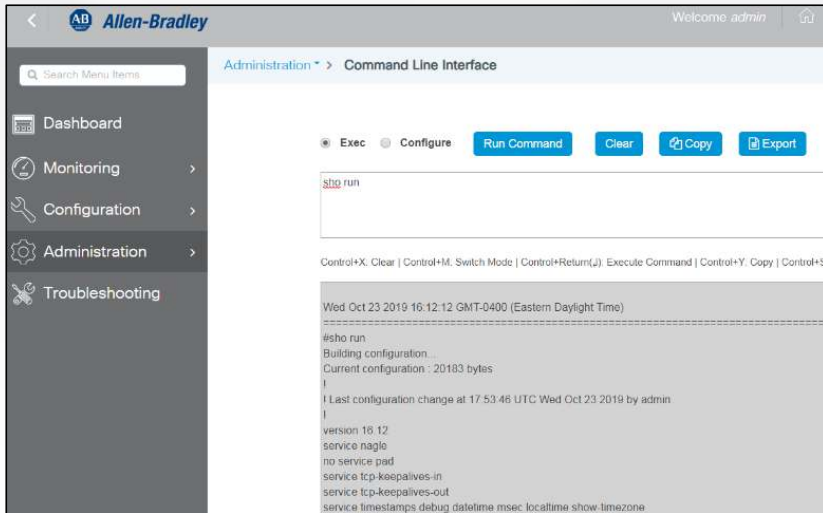
# WebUI key attributes

- Updated menu structure and workflow
- Fast navigation and downloads
- Customizable dashboard
- Screen sorting and filtering options
- File Manager



# WebUI key attributes

- Extended trouble shooting tools
  - Debug bundle
  - Ping and trace route
- Direct interface to CLI





# Questions?

expanding **human possibility**<sup>®</sup>



# Next Gen ETAP



**Rockwell  
Automation**

# 1783-ETAP Lifecycle Announcement

## Active Mature Transition

- Current Lifecycle Status: **Active Mature**
  - New product remains available for sale
  - Spare parts, repair services, tech support available
  - Not eligible for Special Pricing Agreements
- Future Lifecycle Status: **End of Life**, planned **June 2024**
  - New product not available for sale
  - Spare parts, repair services available if practical
  - Tech support available with paid contract
  - Not eligible for Special Pricing Agreements
- Future Lifecycle Status: **Discontinuation**, planned **Summer/Fall 2024**
  - June 2024 for Non-K version
  - October 2024 for K-versions
  - Spare parts, repair services available if practical
  - Tech support available with paid contract
  - Not eligible for Special Pricing Agreements
  - [Next Generation ETAP product planned](#)



## Product Lifecycle Status Definitions

- **ACTIVE:** Most current offering within a product category
- **ACTIVE MATURE:** Product is fully supported, but a newer product or family exists. Gain value by migrating.
- **End Of Life:** Discontinued date announced – actively execute migrations and last time buys. Product generally orderable until the discontinued date\*
- **DISCONTINUED:** Product no longer manufactured or procured\*\*. Repair/exchange services may be available



# Stratix 4100 - Next Generation ETAP Overview

**Target AFC Date: May 2024**

- Additional product details will be available in the Nov 2023 timeframe
- Modeled after current ETAP solution for Drop In Replacement
- Hardware updates to meet market requirements:
  - 1 Gbps Capability
  - Copper and SFP Options
  - Rotary switches for configuration

Catalog Numbers	Description
1783-ETAP3T	Three copper ports
1783-ETAP2T1SFP	Two copper ports, one SFP slot on network side
1783-ETAP1T2SFP	One copper port, two SFP slots on network side
1783-ETAP3TXT	Three copper ports, XT rating

**Preliminary Catalog Numbers for next gen ETAPs (final catalog numbers may change)**



# CIP Security



**Rockwell  
Automation**

# Why is CIP Security Important?

- Historically, Industrial Control Systems (ICS) network protocols lack the security properties necessary to allow a device to “defend itself” against a network/communications attack
  - Lack of authenticity, (security) integrity, and confidentiality
  - EtherNet/IP, PROFINET, Modbus, etc. all have the same issues
- Secure communications is required for certification to IEC62443 and is identified as a critical capability in most all other publications, standards and frameworks.



# ODVA CIP Security™ Protocol

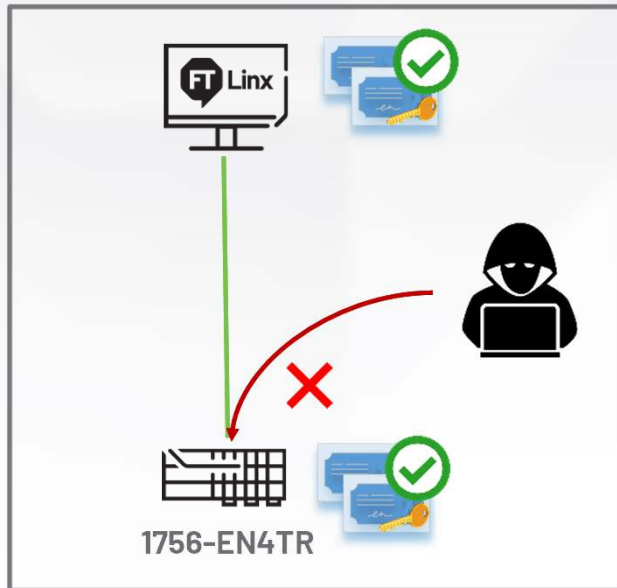
Security Property	Volume 8: CIP Security™ Technical Description
<b>Device Identity</b>	X.509v3 digital certificates used to provide cryptographically secure identifies to devices
<b>Device Authentication</b>	TLS (Transport Layer Security) and DTLS (Datagram Transport Layer Security) cryptographic protocols used to help provide secure transport of EtherNet/IP™ traffic
<b>Data Integrity</b>	Hashes or HMAC (keyed-Hash Message Authentication Code) as a cryptographic method of providing data integrity and message authenticity to EtherNet/IP™ traffic
<b>Data Confidentiality</b>	Data encryption as a means of encoding messages or information to help prevent reading or viewing of EtherNet/IP™ data by unauthorized parties

# CIP Security™ Protocol Overview

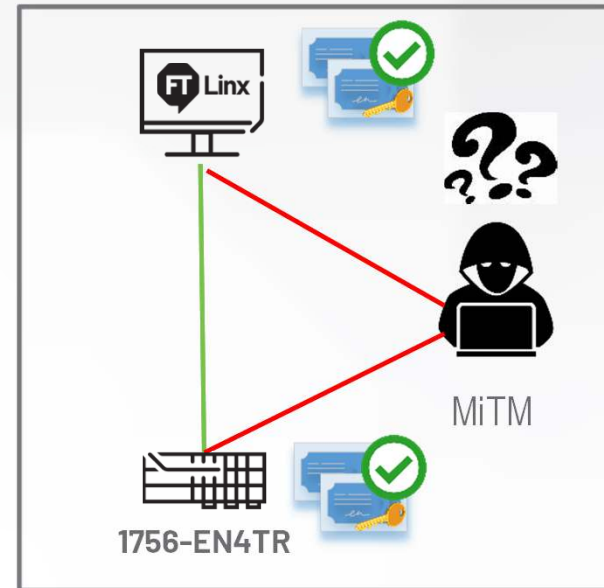
## Identity authentication

- **Identify, authentication** – Helps prevent unauthorized devices from establishing connections
- **Integrity** – Helps prevent tampering or modification of communications
- **Confidentiality** – Helps prevent snooping or disclosure of data

Unauthorized Access



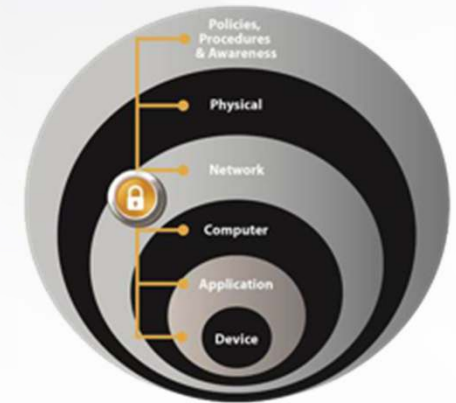
Man-In-The-Middle Attack Protection



# Secure Communications Summary

## CIP Security™ provides a Secure Transport for EtherNet/IP

- Enables an EtherNet/IP connected device to protect itself from malicious communications
  - Reject messages sent by untrusted people or untrusted devices (authenticity)
  - Reject data that has been altered (integrity)
  - Prevent viewing of EtherNet/IP data by unauthorized parties (confidentiality)
- Reinforces defense-in-depth
  - Multiple layers of security are more resilient to attack
  - Each layer adds to the one above it
  - This does not replace the need for firewalls or other infrastructure.



# CIP Security Delivers New Capabilities

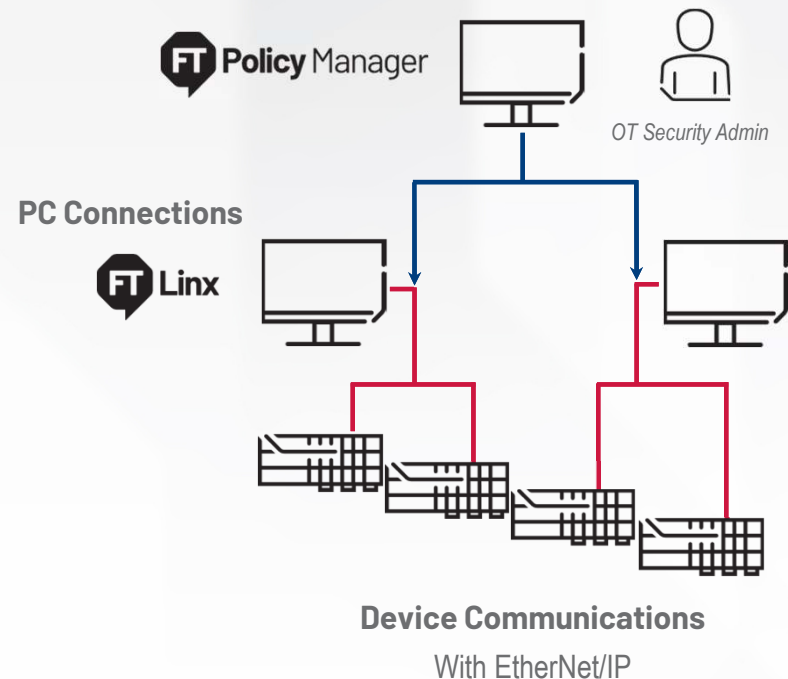
## Secure communications with EtherNet/IP

- **Authentication** – helps prevent unauthorized devices from establishing connections
- **Integrity** – helps prevent tampering or modification of communications
- **Confidentiality** – helps prevent snooping or disclosure of data

### Notable features:

- **System management**
  - Easily create and deploy security policies to many devices, all at once
- **Micro-segmentation**
  - Segment your automation application into smaller cell/zones.
- **Device-based firewall**
  - Enable/disable available ports/protocols of devices (i.e.,/ HTTP/HTTPS)
- **Legacy Systems Support**
  - Trusted IP – authorize specific communications based on IP address
  - Retrofit 1756 based systems with the new 1756-EN4TR
  - Leverage 1783-CSP proxy device in front of legacy products

## System Components





# Questions?

expanding **human possibility**<sup>®</sup>



PUBLIC