



expanding **human possibility**[®]

Stratix[®] 5200 Fully Managed Switch Overview

Name • Title • November 2022



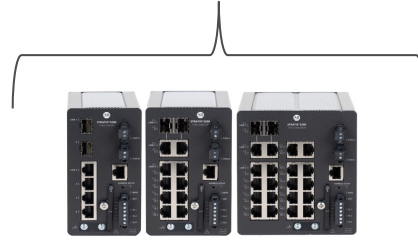
PUBLIC

Network Switch Portfolio Overview

Supporting secure network infrastructure for a wide range of industrial applications



Next generation fully managed switch replacing Stratix® 5700 switch



Stratix® 2000 switches

Stratix® 2500 switches

**Stratix® 5700
ArmorStratix™
5700* switches**

Stratix® 5200 switches

Stratix® 5400 switches

Stratix® 5800 switches

Stratix® 5410 switches

100M/1G ← 100M ← 100M/1G ← 1G/10G

UNMANAGED

LIGHTLY MANAGED

FULLY MANAGED

HIGH PERF MANAGED



PUBLIC

- *End of Life on ArmorStratix™ has been announced
- **End of Life on FTNM has been announced

Stratix® 5200 switch overview

- Target: Q2 2023, All SKUs
- Fixed (non-modular) managed switch platform
 - 6, 10 and 20 port versions
- Layer 2 firmware (No Layer 3 planned)
 - Base or Full firmware with options for DLR and NAT
- Stratix® 5700 switch feature set*, Plus:
 - IOS-XE operating system (same as Stratix® 5800 switch)
 - New User Web UI
 - PRP
 - 2 gig uplinks or all gig option
- Secure Digital (SD) flash card (optional)
- Dual power inputs
- Premier integration to the Integrated Architecture® system
- Faceplates and AOPs planned for release



* Some operations will differ



PUBLIC

Value of newer Stratix® switch platforms

Hardware configurations and features



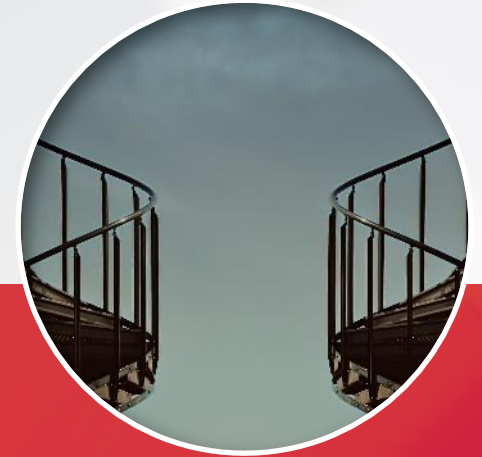
Simplified portfolio and switch selection

- Optimized to simplify switch selection and ordering process
- Streamlined portfolios for Fully and High performance managed



Expansion of higher port speed product options

- All gig SKUs for Stratix® 5800 switch family
- All gig SKU options being introduced with Stratix® 5200 switch family (same tier as Stratix® 5700 switch)



Redundant and resilient architecture options expand

- Redundant and resilient system features support in fully and high-performance managed switch tiers.

Value of newer Stratix® switch platforms

Software functionality and features



Fundamental trust features

- Cisco® Cyber Vision Sensor options (Stratix® 5800 switch)
- Ties into Cisco TrustSec software defined segmentation approach
- Fundamental protection against counterfeit hardware and software risks
- Additional encryption options



Web UI enhancements

- Improved performance
- Enhanced troubleshooting tools
- Fundamental disaster recovery features
- Customizable dashboards



Common software with Cisco Enterprise switching

- Simplify validation of updates and patches for production environments
- Aligns with Cisco Catalyst® and wireless infrastructure software for Enterprise

Stratix® Switches – Supporting Digital Transformation

Customer Challenge	Solution	Lightly Managed	Fully Managed	High Performance
Unplanned downtime resulting from day-to-day operations	Loop Prevention	■	■	■
	High Speed Resiliency	■	■	■
	Redundant Networks	■	■	■
Unexpected events of today and scaling for future needs	Port Prioritization / Virtual Segmentation	■	■	■
	Network Prioritization / Multi-Disciplined	■	■	■
	Extended Gigabit	■	■	■
	Modular options	■	■	■
Actionable information allows collaboration w/ remote experts on communications issues	Visibility in Operations Tools	■	■+	■+
	Visibility in IT Tools	■	■	■+
	Common IOS and Programmability	■	■	■
Risk mitigation reduces costs of network breaches and product recalls	Port Security / Segmentation	■	■	■
	Visibility / NetFlow	■	■	■+
	3 rd Party Security Certs (IEC-62443-4-2)	■	■	■
	Software Defined Segmentation	■	■	■



Features form the basic structure of the product offering



Features shifting to lower tiers in support of customer's digital transformation



Significant enhancements with new product solutions

Stratix® switch portfolio

Product lifecycle and migration

Product lifecycle status definitions

- ACTIVE:** Most current offering within a product category
- ACTIVE MATURE:** Product is fully supported, but a newer product or family exists. Gain value by migrating.
- END OF LIFE:** Discontinued date announced – actively execute migrations and last time buys. Product generally orderable until the discontinued date*
- DISCONTINUED:** Product no longer manufactured or procured**. Repair/exchange services may be available



Product	Lifecycle	Modernization	Remark
Stratix® 2000 switch	Active	Stratix® 2500 and Stratix® 5200 switches	Consider value of managed switches
Stratix® 6000 switch	Discontinued	Stratix® 2500 and Stratix® 5200 switches	
Stratix® 2500 switch	Active		
Stratix® 5200 switch	New		Launch in Spring 2023
Stratix® 5700 switch	Active Mature	Stratix® 5200 and Stratix® 5800 switches	Expect to transition to EOL stage in Spring 2024
Stratix® 5400/5410 switch	Active		
Stratix® 5800 switch	New	All Gig, New IOS-XE, Web UI	Modular design
Stratix® 8000 switch	Discontinued	Stratix® 5800 or Stratix® 5200 switches	Modular offerings in Stratix® 5800 switches
FactoryTalk® Network Manager™ software	End of Life	Network Topology features coming in FactoryTalk® Linx 6.31.00 software, alarming support with version 33 or newer Logix controllers and Stratix® switches, Cisco DNA Center support for Stratix® switches coming soon, other technology partner options	No direct migration path, but several suggested options depending on features being used.

Stratix® 5200 switch catalog structure

Ref #	Catalog number	Stratix® 5200 switch description	Total ports	Combo ports	SFP slots	Copper ports	FW notes	1588	Ring support	PRP	NAT
1	1783-CMS6B	4 cu 100 ports, 2 SFP 100/1000 slots, Base FW	6		2GE	4FE	Base		REP Ring		
2	1783-CMS6P	4 cu 100/1000 ports, 2 SFP 100/1000 slots, Full FW	6		2GE	4GE	Full	Yes	REP Ring		
3	1783-CMS10B	8 cu 100 ports, 2 Combo 100/1000 slots, Base FW	10	2GE		8FE	Base		REP Ring		
4	1783-CMS10P	8 cu 100/1000 ports, 2 Combo 100/1000 ports, Full FW	10	2GE		8GE	Full	Yes	REP Ring		
5	1783-CMS10DP	8 cu 100/1000 ports, 2 SFP 100/1000 slots, Full FW	10	2GE		8GE	Full	Yes	REP Ring, DLR Ring		
6	1783-CMS10DN	8 cu 100/1000 ports, 2 combo 100/1000 ports Full FW DLR / PRP / NAT	10	2GE		8GE	Full	Yes	REP Ring, DLR Ring	Yes	Yes
7	1783-CMS20DB	18 cu 100 ports, 2 combo 100/1000 ports, Base FW DLR	20	2GE		18FE	Base		REP Ring, DLR Ring		
8	1783-CMS20DP	18 cu 100/1000 ports, 2 combo 100/1000 ports Full FW - DLR	20	2GE		18GE	Full	Yes	REP Ring, DLR Ring		
9	1783-CMS20DN	18 cu 100/1000 ports, 2 combo 100/1000 ports Full FW DLR / PRP / NAT	20	2GE		18GE	Full	Yes	REP Ring, DLR Ring	Yes	Yes

How will the Stratix® 5200 switch line up (Preliminary)

Feature	Stratix® 2500 switch	Stratix® 5700 Lite switch	Stratix® 5700 Full switch	Stratix® 5200 Base switch	Stratix® 5200 Full switch (17.11)	Stratix® 5800 switch
Switching						
QoS	Basic	No	Yes	Yes	Yes	Yes
Gigabit Downlinks	No	Select HW	Select HW	No	Yes	Yes
Layer 3 Routing	No	No	No	No	No	Yes
DLR	No	Select HW	Select HW	No	Select HW	Yes (17.11)
CIP Sync - 1588	Passthrough Only	Passthrough Only	Yes	Passthrough Only	Yes	Yes
VLANs	Yes	Yes	Yes	Yes	Yes	Yes
NAT	No	No	Select HW	No	Select HW	Yes
Flexlinks	No	No	Yes	No	No	No
PRP	No	No	No	No	Select HW	Yes
Security						
Port Security	Yes	No	Yes	Yes	Yes	Yes
Access Control Lists (ACLs)	No	Yes	Yes	802.1x	Yes	Yes
62443-4-2 Cert	No	No	No	No	Yes	Yes

How will the Stratix® 5200 switch line up (Preliminary)

Feature	Stratix® 2500 switch	Stratix® 5700 switch - Lite	Stratix® 5700 switch - Full	Stratix® 5200 switch - Base	Stratix® 5200 switch - Full (17.11)	Stratix® 5800 switch
Configuration and Troubleshooting						
Device Manager	Yes	Yes	Yes	No	No	No
NEW WebUI	No	No	No	Yes	Yes	Yes
AOP (CIP™)	Yes	Yes	Yes	Yes	Yes	Yes
Faceplates	Yes	Yes	Yes	Yes	Yes	Yes
SD Card		Yes	Yes	Yes	Yes	Yes
DHCP Per Port	Yes	Yes	Yes	Yes	Yes	Yes
Cisco TrustSec	No	No	No	No	No	Select HW

Ease of Migration from Stratix® 5700 to Stratix® 5200 switch – Under Evaluation/Development

- Documented Migration Guide to support the process
- Ability to easily transfer Stratix® 5700 switch configs to Stratix® 5200 switch configs
- Inclusion of Stratix® 5200 switch in CPwE documentation

Stratix® 5200 switch specifications (preliminary)

	1	2	3	4	5	6	7	8	9	
	1783- CMS6B	1783- CMS6P	1783- CMS10B	1783- CMS10P	1783- CMS10DP	1783- CMS10DN	1783- CMS20DB	1783- CMS20DP	1783- CMS20DN	
Inrush current, max	10 A for 7 ms with 12V input 6 A for 6 ms with 24V input 6 A for 6 ms	10 A for 7 ms with 12V input 6 A for 6 ms with 24V input 6 A for 6 ms	10 A for 7 ms with 12V input 6 A for 6 ms with 24V input 6 A for 6 ms	10 A for 7 ms with 12V input 6 A for 6 ms with 24V input 6 A for 6 ms	10 A for 7 ms with 12V input 6 A for 6 ms with 24V input 6 A for 6 ms	10 A for 7 ms with 12V input 6 A for 6 ms with 24V input 6 A for 6 ms	10 A for 7 ms with 12V input 6 A for 6 ms with 24V input 6 A for 6 ms	10 A for 7 ms with 12V input 6 A for 6 ms with 24V input 6 A for 6 ms	10 A for 7 ms with 12V input 6 A for 6 ms with 24V input 6 A for 6 ms	10 A for 7 ms with 12V input 6 A for 6 ms with 24V input 6 A for 6 ms
Power Input	1.6 A with 12V input 0.8 A with 24V input 0.4 A with 48V input	1.6 A with 12V input 0.8 A with 24V input 0.4 A with 48V input	2.0 A with 12V input 1.0 A with 24V input 0.5 A with 48V input	2.0 A with 12V input 1.0 A with 24V input 0.5 A with 48V input	3.2 A with 12V input 1.6 A with 24V input 0.8 A with 48V input	3.2 A with 12V input 1.6 A with 24V input 0.8 A with 48V input	4.2 A with 12V input 2.6 A with 24V input 1.3 A with 48V input	4.2 A with 12V input 2.6 A with 24V input 1.3 A with 48V input	4.2 A with 12V input 2.6 A with 24V input 1.3 A with 48V input	4.2 A with 12V input 2.6 A with 24V input 1.3 A with 48V input
Power Consumption	14W	14W	17.7W	17.7W	28W	28W	36.7W	36.7W	36.7W	
Voltage nominal	12V to 48V	12V to 48V	12V to 48V	12V to 48V	12V to 48V	12V to 48V	12V to 48V	12V to 48V	12V to 48V	
Voltage range	9.6V to 60V	9.6V to 60V	9.6V to 60V	9.6V to 60V	9.6V to 60V	9.6V to 60V	9.6V to 60V	9.6V to 60V	9.6V to 60V	
Operating Temperature	-40 to 60°C	-40 to 60°C	-40 to 60°C	-40 to 60°C	-40 to 60°C	-40 to 60°C	-40 to 60°C	-40 to 60°C	-40 to 60°C	
MAC addresses, max supported	8000	8000	8000	8000	8000	8000	8000	8000	8000	
Dual Pwr Supply Input	Yes	Yes	Yes	Yes	Yes	Yes	Yes	Yes	Yes	
Pwr Connectors Interchangeable	Yes	Yes	Yes	Yes	Yes	Yes	Yes	Yes	Yes	
I/Os	RJ45 Console, USB	RJ45 Console, USB	RJ45 Console, USB	RJ45 Console, USB	RJ45 Console, USB	RJ45 Console, USB	RJ45 Console, USB	RJ45 Console, USB	RJ45 Console, USB	

Product dimensions: Stratix® 5200 series switches (Preliminary)

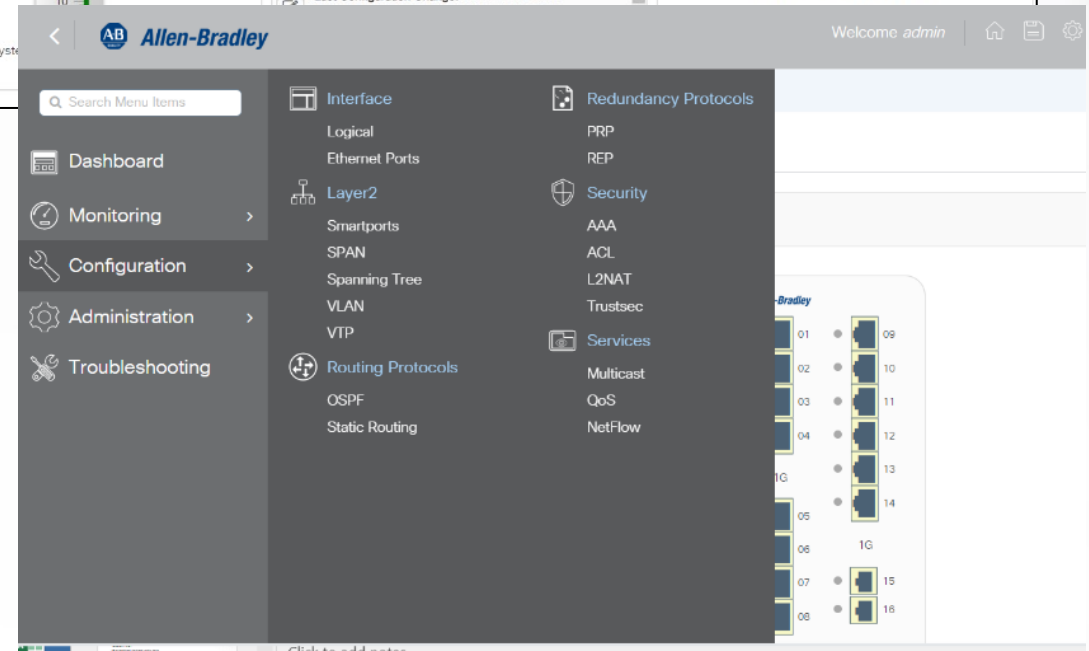
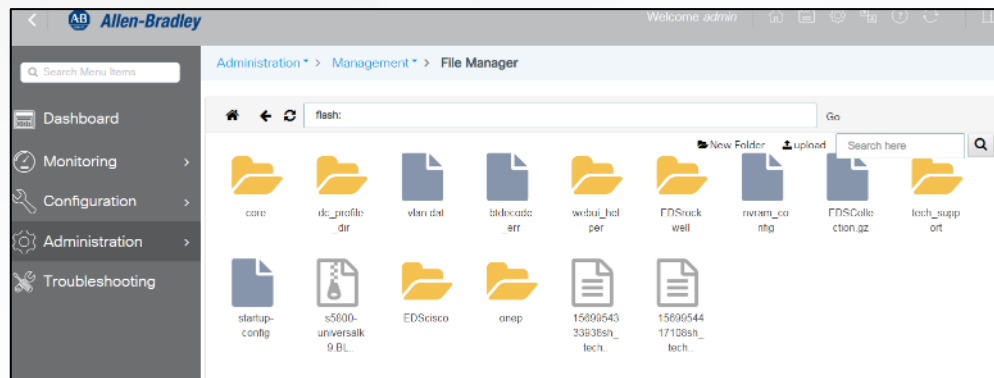
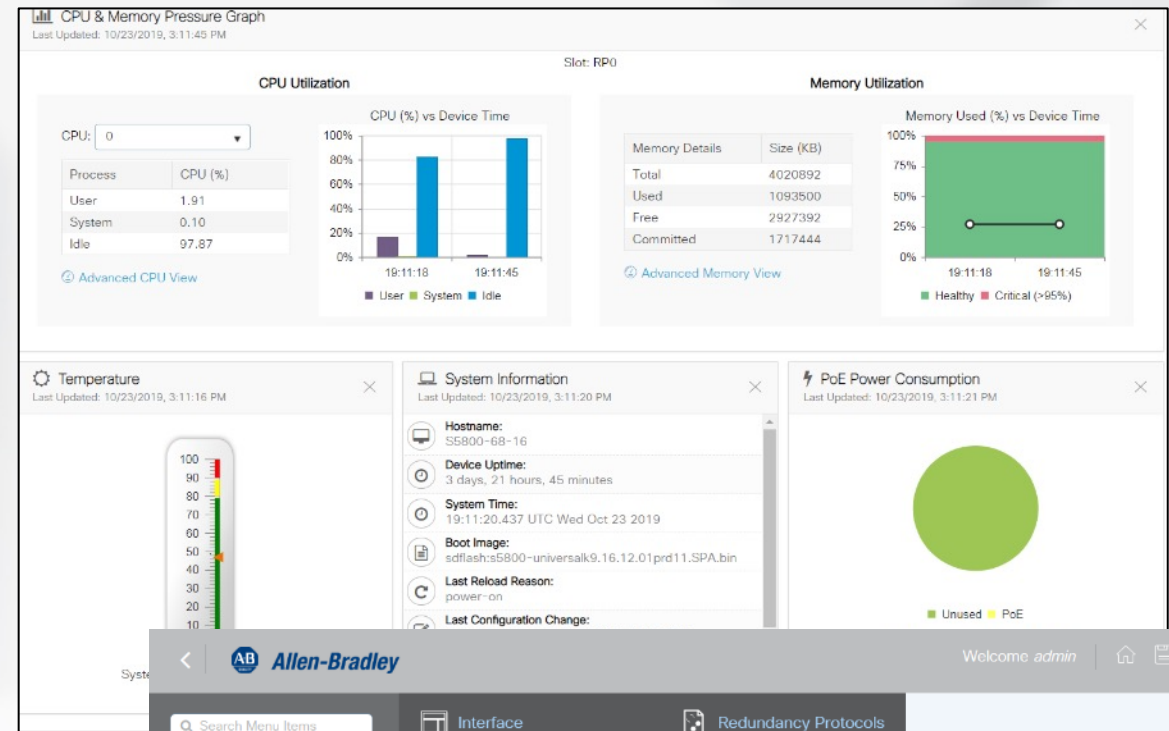
Stratix® 5200 Product Number	Dimensions (Switch only) in Inches			Dimensions (Switch, DIN Rail and Connectors) in Inches		
	H	W	D	H	W	D
1783-CMS6B 1783-CMSS6P	5.00	2.55	4.33	5.00	2.55	5.05
1783-CMS10B 1783-CMS10P	5.00	3.00	4.33	5.00	3.00	5.05
1783-CMS10DP 1783-CMS10DN	5.00	3.00	5.08	5.00	3.00	5.80
1783-CMS20DB 1783-CMS20DP 1783-CMS20DN	5.00	4.30	5.08	5.00	4.30	5.80

Stratix 5200 spacing for heat:

- Equal to Stratix 5700 spacing requirements
- Top and bottom 2.0 in (50.8mm)
- Sides: 2.0 inches (50.8mm)
- Front: 2.0 inches (50.8mm)

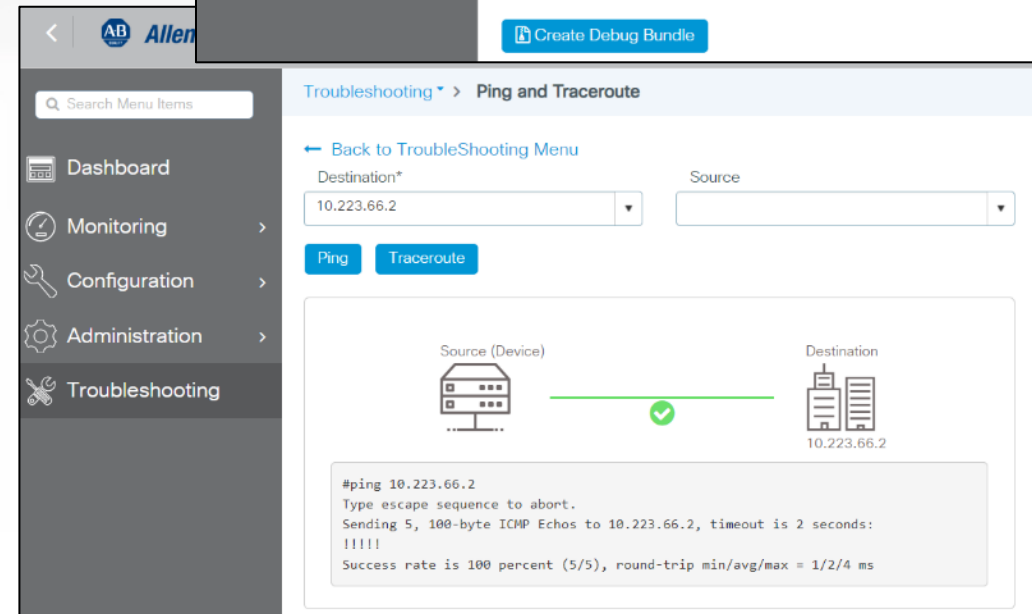
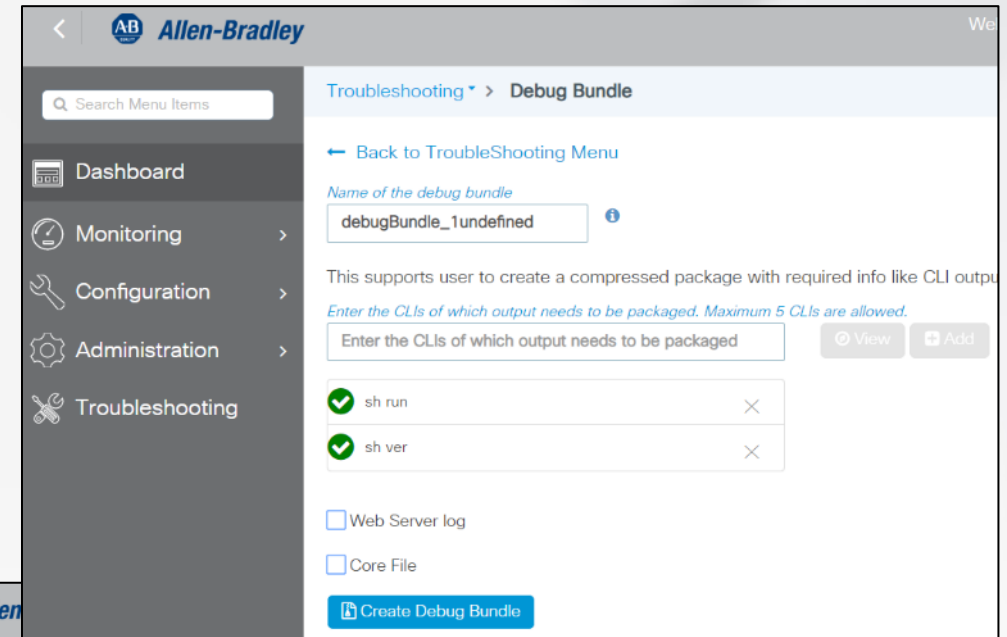
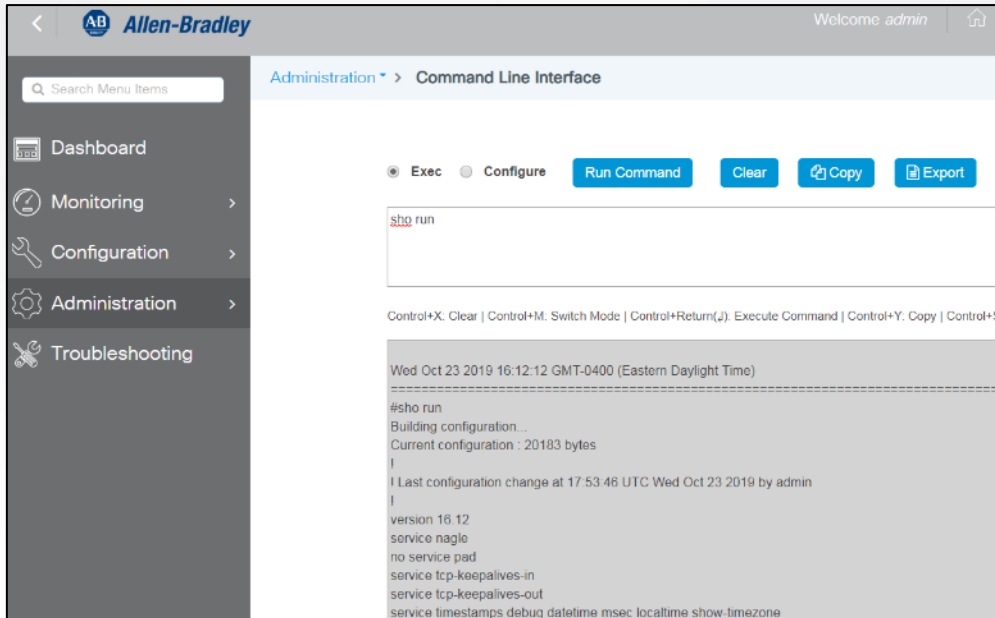
WebUI key attributes

- Updated menu structure and workflow
- Fast navigation and downloads
- Customizable dashboard
- Screen sorting and filtering options
- File Manager



WebUI key attributes

- Extended trouble shooting tools
 - Debug bundle
 - Ping and trace route
- Direct interface to CLI



Stratix® Managed Switch Portfolio – Driving Your Digital Transformation



Extensive feature and hardware configurations
Integrated with FactoryTalk Solutions

Optimizes performance

Premier integration

Improves Total Cost of Ownership

Cybersecurity with IEC 62443 Certification



Questions?

expanding **human possibility**[®]



PUBLIC