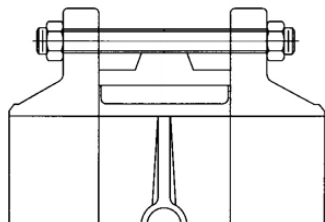


## Wafer Type Valve

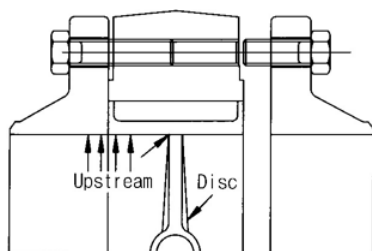
Recommended stud length  
for tightening wafer type valve  
between flanges.



VALVE SIZE	ANSI 150 FLANGES		ANSI 300 FLANGES	
	Stud Dia & Length (in)	# studs	Stud Dia & Length (in)	# studs
2"	5/8" X 5-1/8"	4	5/8"X 5-3/8"	8
2 1/2"	5/8" X 5-1/8"	4	3/4"X 5-7/8"	8
3"	5/8" X 5-1/2"	4	3/4"X 6-3/8"	8
4"	5/8" X 5-1/2"	8	3/4"X 6-3/4"	8
5"	3/4" X 6-3/8"	8	3/4"X 7"	8
6"	3/4" X 6-3/8"	8	3/4"X 7-1/8"	12
8"	3/4" X 6-1/4"	8	7/8"X 8-1/2"	12
10"	7/8" X 7-1/2"	12	1"X 9-5/8"	16
12"	7/8" X 8-3/8"	12	1-1/8"X 10-3/8"	16
14"	1" X 8-3/4"	12	1-1/8"X 11-3/4"	20
16"	1" X 10"	16	1-1/4"X 12-3/4"	20
18"	1-1/8" X 11-1/8"	16	1-1/4"X 13-5/8"	24
20"	1-1/8" X 12"	20	1-1/4"X 12-3/8"	24
24"	1-1/4" X 13-13/16"	20	1-1/2"x 16-1/4"	24

## Lug Type Valve

Recommended screw length  
for tightening lug type valve  
between flanges.



VALVE SIZE	ANSI 150 FLANGES		ANSI 300 FLANGES	
	Cap Screw Dia & Length (in)	# screws	Cap Screw Dia & Length (in)	# screws
2"	5/8" X 1-1/2"	8	5/8"X 1-1/2"	16
2 1/2"	5/8" X 1-1/2"	8	3/4"X 1-3/4"	16
3"	5/8" X 1-1/2"	8	3/4"X 1-3/4"	16
4"	5/8" X 1-3/4"	16	3/4"X 2-1/4"	16
5"	3/4" X 1-3/4"	16	3/4"X 2-1/4"	16
6"	3/4" X 2"	16	3/4"X 2-1/2"	24
8"	3/4" X 2-1/4"	16	7/8"X 2-7/8"	24
10"	7/8" X 2-1/4"	24	1"X 3-1/4"	32
12"	7/8" X 2-1/2"	24	1-1/8"X 3-1/2"	32
14"	1" X 2-1/2"	24	1-1/8"X 4-1/4"	40
16"	1" X 3-1/4"	32	1-1/4"X 4-3/4"	40
18"	1-1/8" X 3-1/4"	32	1-1/4"X 5-1/4"	48
20"	1-1/8" X 3-1/4"	40	1-1/4"X 5-1/2"	48
24"	1-1/4" X 3-1/2"	40	1-1/2"X 6-1/4"	48