

**RONALD  
YOUNG + CO  
BUILDERS**

Since 1970

3 Federation Drive, Sorell

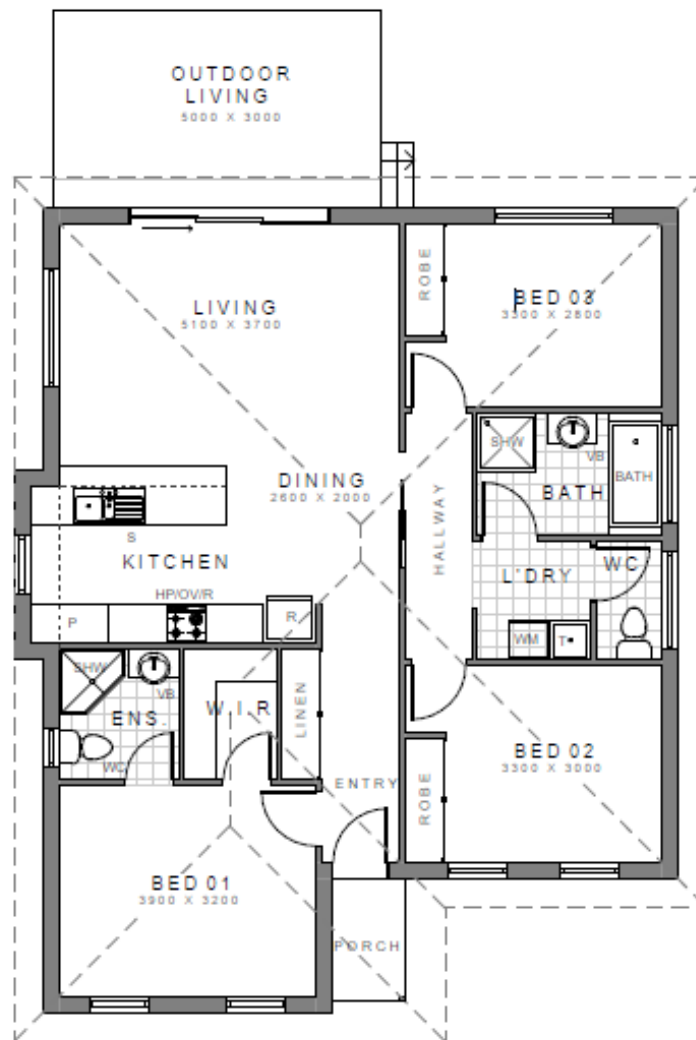
3 bed, 2 bath

Build Price: \$405,820.00

Land Price: \$270,000.00

© RONALD YOUNG + CO BUILDERS  
NOT TO SCALE - FOR ILLUSTRATIVE PURPOSES ONLY





### Dwelling Size

109.4m<sup>2</sup> or 11.78 sq

3 bed, 2 bath

Land Size 561m<sup>2</sup>

Build Price: \$405,820.00

Land Price: \$270,000.00

© RONALD YOUNG + CO BUILDERS  
NOT TO SCALE - FOR ILLUSTRATIVE PURPOSES ONLY

### 3 FEDERATION DRIVE, SORELL

- MGP10 Pine Frame
- Pre-Oiled Jarrah Decking
- Stockmans Ridge carpet on Dunlop 9mm underlay to entry, hall, living and bedrooms and robes
- Double glazed aluminium awning windows
- Floor Tiles to kitchen, bathroom, WC< ensuite and laundry



**RONALD  
YOUNG + CO  
BUILDERS**

Since 1970

Constructing homes  
Building friendships