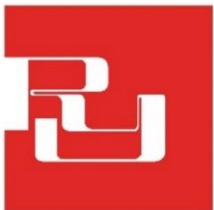




© RONALD YOUNG + CO BUILDERS
NOT TO SCALE - FOR ILLUSTRATIVE PURPOSES ONLY



**RONALD
YOUNG + CO
BUILDERS**

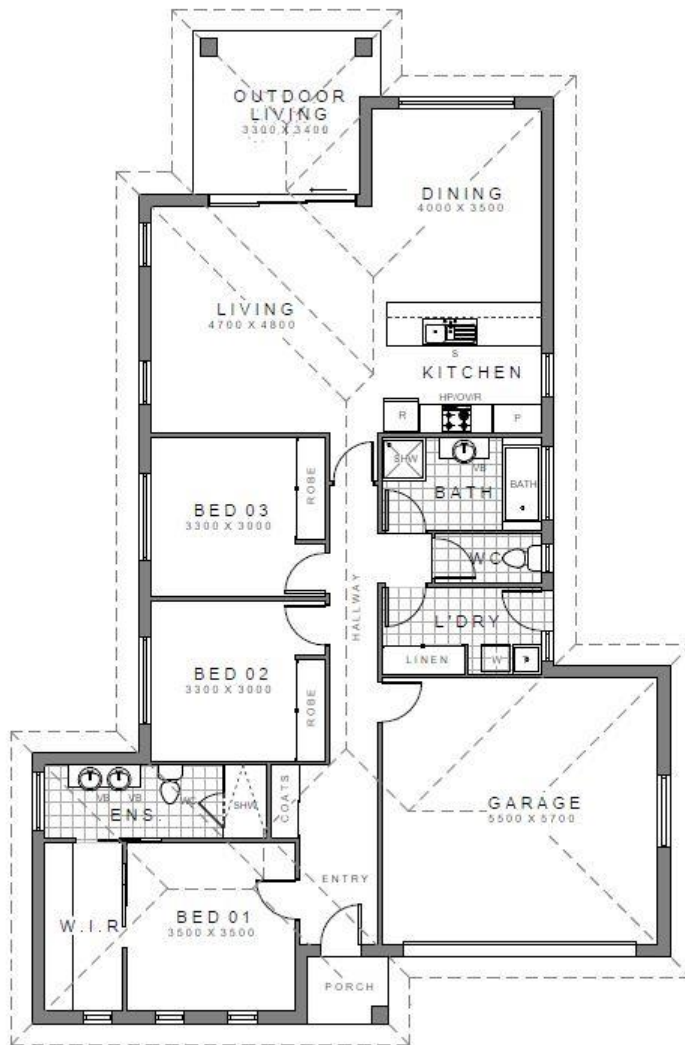
Since 1970

2 Miena Drive, Sorell

3 bed, 2 bath

Build Price: \$555,370.00

Land Price: \$325,000.00



Dwelling Size

174.8m² or 18.8 sq

3 bed, 2 bath

Land Size 724m²

Build Price: \$555,370.00

Land Price: \$325,000.00

© RONALD YOUNG + CO BUILDERS
NOT TO SCALE - FOR ILLUSTRATIVE PURPOSES ONLY

2 MIENA DRIVE, SORELL

- MGP10 Pine Frame
- Double glazed aluminium awning windows
- Double Car Garage
- Floor Tiles to bathroom, WC, ensuite and laundry
- Hybrid 1200 overlay flooring to living areas
- Stockmans Ridge carpet on 9mm Dunlop underlay to bedrooms and robes



**RONALD
YOUNG + CO
BUILDERS**

Since 1970

Constructing homes
Building friendships