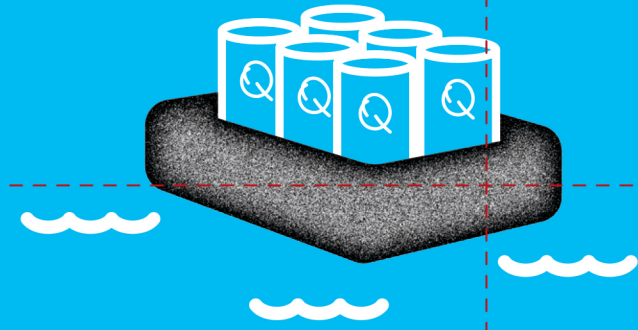
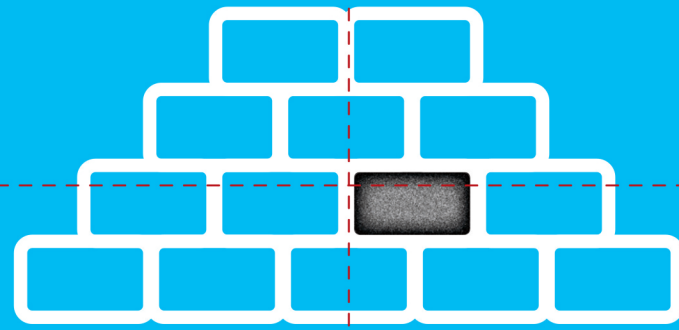


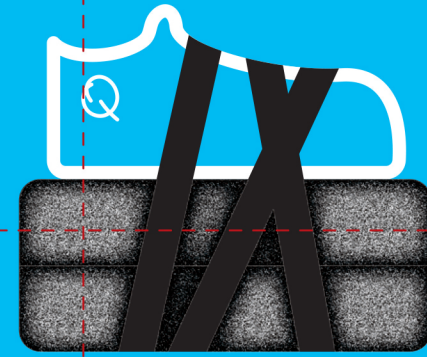
WHAT TO DO WITH YOUR NEW FOAM BRICK



Beverage Barge



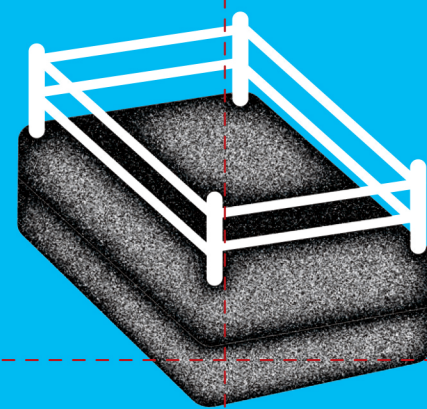
Igloo Patch



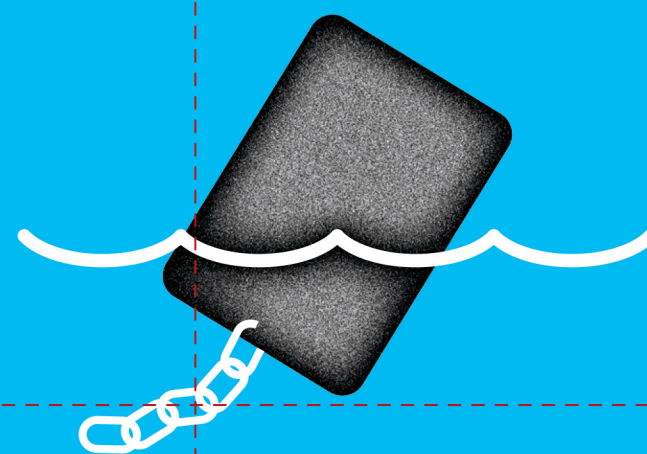
Vertical Optimization Device



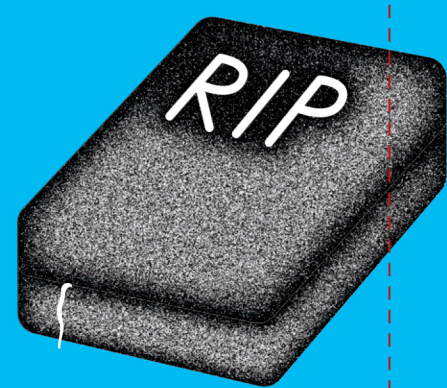
Goth Loofah



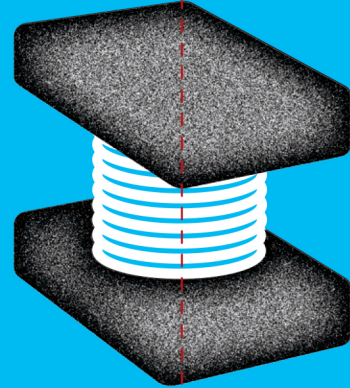
Hamster Wrestling Ring



Horrible Boat Anchor



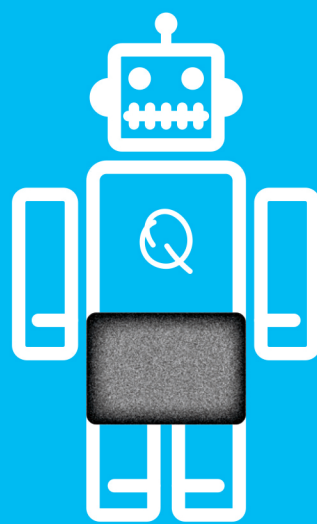
Pet Coffin



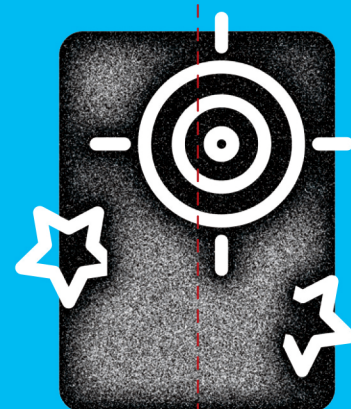
Tortilla Warmer



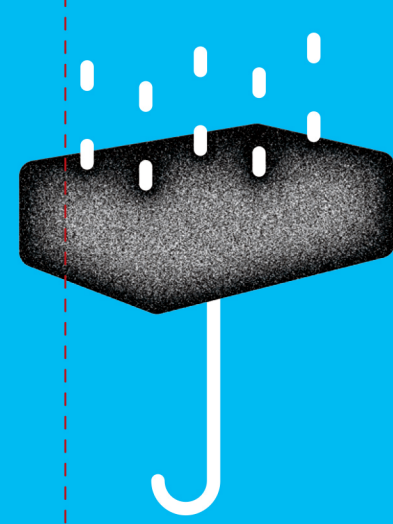
New Friend



Robot Jockstrap



Ninja Dartboard



Emergency Umbrella

The foam brick you are holding is the end result of an indecisive creative director and two pushed deadlines. In a perfect world, you would be holding a custom-molded foam enclosure with a high-tech, heat-treated texture that mimics Ohm's sleek aesthetic. Basically, it was supposed to look really freaking cool. Instead, you got this weird foam brick. But in the interest of looking at the bright side and saving the world, please consider the above uses to give your weird foam brick a second life.

Quirky

PART # : R-INS-OHMM-XUS
STOCK : 157gsm C2S, Matte UV
FLAT DIMS : 332 x 525 mm

CUT
SCORE

Quirky

OHM
portable speaker
+ wireless charging dock



Ohm was invented by Maria Morrill, a homemaker from Bayamon, Puerto Rico.

While doing research on which portable speaker to buy, Maria found herself underwhelmed by the options. This busy stay-at-home-mom challenged herself to invent something better... and now she and her family take their tunes to go with Ohm.

Like all Quirky products, Ohm was invented and influenced by real people like you. Ordinary people with extraordinary imaginations submit ideas to Quirky every day, then we collaborate with our online community to make the best of those ideas a reality. When a product is sold, we share a cut of the revenue with all those who had an impact.

HOW QUIRKY WORKS

- 1 Submit your idea
- 2 Help us decide
- 3 Influence and earn
- 4 We make it real
- 5 The world prospers

Submit your product idea to quirky.com

1901 influencers helped bring Maria's idea to life.

It all started with Maria's concept
Submitted to Quirky in May '10



And now you have Ohm!

USING OHM

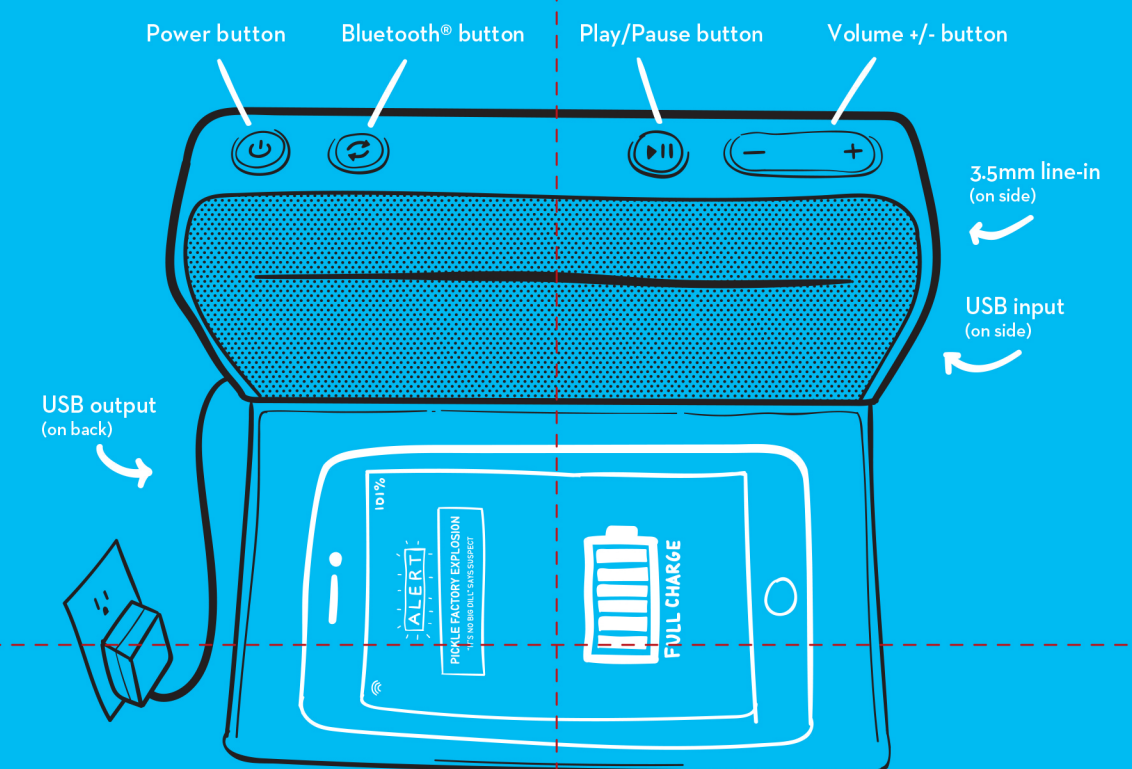
- To turn on/off: press and hold power button.
- To toggle play/pause: press play/pause button.
- To adjust volume: press +/- button. (16 volume levels)
- To operate speakerphone:
 - press play/pause button to answer an incoming call.
 - press and hold play/pause button to reject an incoming call or end a call.
 - press play/pause button while on a call to toggle mute/unmute.
- Ohm will make a sound when the battery reaches 25% charge and 10% charge states.
- Ohm will automatically turn off if the battery becomes too hot during charge or if the battery reaches a critical low.
- Ohm's USB charging output will be reduced from 2.1 A to 1 A if all charging ports are in use at once.

FEATURES AND FUNCTIONS

- 5 watts total power output
- Dual drivers, single passive bass radiators
- Wireless charging docking pad for Qi compatible devices
- Wirelessly connects to Bluetooth® v4.0 devices for playback
- Integrated microphone for speakerphone functionality (with dual microphone noise cancellation)
- Wireless range up to 30 ft.
- 6-8 hours of continuous playback on fully-charged battery
- 1 high-powered USB port on charging dock
- 1 Micro-USB port on speaker
- Voltage range 100-240V AC (50Hz-60Hz)

ALSO IN THE BOX:

- 2' 3.5mm auxiliary cable
To connect your non-Bluetooth® device
- 1' USB to Micro-USB cable
To charge the speaker without the dock
- AC power adapter wall plug
To power the charging dock



CONNECTING TO YOUR BLUETOOTH® DEVICE

- 1 Turn on Bluetooth® from your device.
- 2 Press and hold the power button on Ohm. You will hear a sound when it turns on.
- 3 Place your device close to the Ohm speaker.
- 4 Press and hold the Bluetooth® button on the Ohm speaker until you hear a sound. The LED light will be flashing as it connects.
- 5 From your device, select "Ohm" from the list of Bluetooth® devices and wait for a confirmation sound from Ohm.
- 6 Once you hear the confirmation sound, Ohm is connected to your device. If Ohm does not connect, press and hold the Bluetooth® button to repeat the pairing process.
- 7 Once connected, you will be able to control music from your device wirelessly within a 30 ft. range.

CONNECTING TO A NON-BLUETOOTH® DEVICE

- Use the included 3.5mm auxiliary cable to connect Ohm to your non-Bluetooth® device.

UNDERSTANDING OHM'S SIGNALS

- When Ohm is fully charged and power is ON, the LED white light will be on.
- When charging, the LED white light will flash evenly.
- If power is turned OFF, the LED light will remain on for 10 seconds, then fade off.
- After 10 minutes of inactivity, Ohm will automatically turn off to conserve battery life.
- When the battery becomes too hot or reaches a critical low, the power light will turn red and Ohm will turn off.

IMPORTANT SAFETY INFORMATION

Read all instructions and warnings prior to using Ohm. Failure to comply with instructions and warnings constitutes improper use of Ohm. Save all instructions. Quirky, Inc. is not responsible for improper use, which may result in personal injury or product damage. Quirky, Inc. is not responsible for any damages one may suffer as a result of use, intended or unintended.

Keep away from children.

CAUTION: RISK OF ELECTRIC SHOCK.

Do not expose device to liquid, moisture, humidity, or rain. Do not use near a bathtub, sink, sauna, pool, or steam room. Do not place objects filled with water, such as a vase, on the device.

CAUTION: RISK OF FIRE OR EXPLOSION.

Do not expose to excessive heat such as sunshine, open flame or other heat sources. Do not dispose of device in fire, as explosion may occur. Do not block any ventilation openings. Clean only with a dry cloth. Do not clean device while being charged.

Use only accessories and attachments as supplied and designated in the instructions.

Do not attempt to modify or disassemble device. There are no user-serviceable parts. Refer all servicing to qualified personnel. Unplug this device during lightning storms or when unused for long periods of time.

Store in a cool, dry place.

FCC WARNING

This device complies with Part 15 of the FCC Rules. Operation is subject to the following two conditions: (1) this device may not cause harmful interference, and (2) this device must accept any interference received, including interference that may cause undesired operation.

Changes or modifications not expressly approved by the party responsible for compliance could void the user's authority to operate the equipment.

NOTE: This equipment has been tested and found to comply

with the limits for a Class B digital device, pursuant to Part 15 of the FCC Rules. These limits are designed to provide reasonable protection against harmful interference in a residential installation. This equipment generates, uses and can radiate radio frequency energy and, if not installed and used in accordance with the instructions, may cause harmful interference to radio communications. However, there is no guarantee that interference will not occur in a particular installation.

If this equipment does cause harmful interference to radio or television reception, which can be determined by turning the equipment off and on, the user is encouraged to try to correct the interference by one or more of the following measures:

- Reorient or relocate the receiving antenna.
- Increase the separation between the equipment and receiver.
- Connect the equipment into an outlet on a circuit different from that to which the receiver is connected.
- Consult the dealer or an experienced radio/TV technician for help.

LIMITED ONE-YEAR WARRANTY

Quirky, Inc. ("Quirky") Original Purchase Product Warranty: Quirky warrants to the original purchaser ("Purchaser") of this Quirky product, for the period of one (1) year following the date on which Purchaser purchases the product, that the product shall be free of defects in design, assembly, material, or workmanship. Quirky will refund or replace, at its option, any defective product free of charge.

In order to qualify for this warranty, the Purchaser must provide the defective product and a copy of the original receipt of purchase to Quirky for inspection. The receipt of purchase must indicate the product purchased, price paid, date of purchase, and name of merchant.

To request service under this warranty, contact Quirky at 866-5-QUIRKY or questions@quirky.com and a Quirky representative will provide instruction on how to proceed. This warranty shall be null and void if Quirky determines that the product has been improperly installed, altered or tampered with in any way. This warranty does not protect against normal use, wear and tear, or damage due to abuse.

THIS WARRANTY CONTAINS THE SOLE WARRANTY OF QUIRKY. THERE ARE NO OTHER WARRANTIES, EXPRESSED OR IMPLIED, INCLUDING THE IMPLIED WARRANTY OF MERCHANTABILITY OR FITNESS FOR A PARTICULAR PURPOSE, AND SUCH IMPLIED WARRANTIES, IF ANY, ARE LIMITED IN DURATION TO THE TERM OF THIS WARRANTY. IN NO EVENT SHALL QUIRKY BE LIABLE FOR INCIDENTAL, SPECIAL, DIRECT, INDIRECT OR CONSEQUENTIAL DAMAGES SUCH AS, BUT NOT LIMITED TO, LOST BUSINESS OR PROFITS ARISING OUT OF THE SALE OR USE OF ANY QUIRKY PRODUCT, EVEN IF ADVISED OF THE POSSIBILITY OF SUCH DAMAGES.

Some jurisdictions do not allow exclusions or limitations on implied warranties or incidental, consequential or other damages, so the above exclusions and limitations may not apply to you.

COPYRIGHT AND TRADEMARK NOTICE

Subject to copyright protection. ©2014. All rights reserved. Quirky is a registered trademark of Quirky, Inc. Bluetooth® is a registered trademark of Bluetooth® SIG. Qi is a registered trademark of Wireless Power Consortium. Image of Motorola Droid Mini is a registered trademark of Motorola Trademark Holdings, LLC. *Smartphone not included.

SUPPORT

Need help? questions@quirky.com
1-866-5QUIRKY
RSS-Gen Issue 3 December 2010/L'ENR-Gen 3e édition/December 2010
English
(This device complies with Industry Canada licence-exempt RSS standard(s). Operation is subject to the following two conditions: (1) This device may not cause interference, and (2) This device must accept any interference, including interference that may cause undesired operation of the device.)

French
Le présent appareil est conforme aux CNR d'Industrie Canada applicables aux appareils radio exempts de licence. L'exploitation est autorisée aux deux conditions suivantes:
(1) l'appareil ne doit pas produire de brouillage, et
(2) l'utilisateur de l'appareil doit accepter tout brouillage radioélectrique subi, même si le brouillage est susceptible d'entraîner une interruption de fonctionnement.

(This equipment complies with FCC RF radiation exposure limits set forth for an uncontrolled environment. This equipment should be installed and operated with a minimum distance of 20 centimeters between radiator and your body.)