

# STAY IN TOUCH

[www.soundfloats.com](http://www.soundfloats.com)



sound.float



SOUND\_FLOAT



soundfloat



info@spikaintl.com

Spika INTL.

111 West 33rd Street, New York, NY 10001

WARNING :

IMPORTANT SAFETY  
INSTRUCTIONS. PLEASE  
READ AND SAVE THESE  
INSTRUCTIONS  
CAREFULLY BEFORE USING  
THIS PRODUCT.

# SOUNDFLOAT

## USER GUIDE



**CAUTION ELECTRICALLY OPERATED PRODUCT.** Not recommended for children under 8 years of age. As with all electrical products, precautions should be observed during handling and used to reduce the risk of electric shock.

**IMPORTANT SAFETY INSTRUCTIONS. PLEASE READ AND SAVE THESE INSTRUCTIONS CAREFULLY BEFORE USING THIS PRODUCT.**

WARNING: CHOKING HAZARD - Small parts - not for children under 3 years.

THIS IS NOT A LIFE SAVING DEVICE. DO NOT LEAVE CHILDREN UNATTENDED WHILE DEVICE IS IN USE. ONLY USE IN WATER IN WHICH THE CHILD IS WITHIN ITS DEPTH AND SUPERVISED.

Read the User Manual carefully before using the SoundFloat. Keep the packaging since it contains important information. Do not operate the SoundFloat for long

periods out of the water to avoid damage.

The SoundFloat must be assembled, inflated, and deflated by an adult.

The SoundFloat is designed to hold ONE person not exceeding 300 lbs for the single chair and 500 for the double chair.

The SoundFloat is for pool use only - DO NOT use in the open sea.

Not to be used by children under the age of eight (8) and must ONLY be

used by children under adult supervision.

An adult must be responsible for battery safety at all times, during use, storage and charging.

ALWAYS store the SoundFloat out of direct sunlight.

ALWAYS inspect the area to ensure it is free of hazards or obstacles such as swimmers before using the SoundFloat.

Remove shoes, eyeglasses, and sharp objects before playing with product.

# Notes:

No flipping, piling, pushing or wrestling when playing with the product. No diving off this product is safe.

Always dry SoundFloat thoroughly before storing. Can cause mildew if stored damp.

Do not use alcohol or mind-altering drugs prior to using this product.

This is a device not intended to replace any other safety consideration including, adult supervision, life guards, fences, gates, pool covers, locks, and so forth.

**WARNING** - Risk of Electric Shock. Connect only to a grounding type receptacle protected by a ground-fault circuit-interrupter (GFCI).

**DO NOT** charge near water.

Always close battery compartment when battery is out. **DO NOT** get water in the battery compartment.

Always disconnect this product from any source of electricity before using in or near water.

# Table of Contents

Introduction	4
FCC/IC Information	4
Maintenance	5
Long-term Storage of Your Product	5
Internal Rechargeable Lithium-Ion Battery	6
Warning/disposal Of Unit	
General Battery Precautions	
Features	7
Important Safety Information	8
Heat and Flame / Power Source	
Cleaning	
Object And Liquid Entry	
Attachments	
Overloading	
Damage Requiring Service	
Servicing	
Environment Attention	
Setting Up the SoundFloat/Turning the SoundFloat ON and OFF	9
Waterproof Information	9
Charging the SoundFloat	10
Using Bluetooth: Pairing Your Device to the SoundFloat	11
Bluetooth Pairing/connection	
Pairing With A Different Device	
Using The Speakerphone Features	
Care and Maintenance	12
Limited Warranty	13
General Aquatic Safety	15
Disclaimer	16

- Instruct all pool users, including children what to do in case of an emergency.
- Always use common sense and good judgement when enjoying any water activity.
- Supervise, supervise, supervise.

For additional information on safety, please visit:

- The Association of Pool and Spa Professionals: The Sensible Way to Enjoy Your Aboveground/Onground Swimming Pool [www.nspi.org](http://www.nspi.org)
- American Academy of Pediatrics: Pool Safety for Children [www.aap.org](http://www.aap.org)
- Red Cross [www.redcross.org](http://www.redcross.org)
- Safe Kids [www.safekids.org](http://www.safekids.org)
- Home Safety Council: Safety Guide [www.homesafetycouncil.org](http://www.homesafetycouncil.org)
- Toy Industry Association: Toy Safety [www.toy-tia.org](http://www.toy-tia.org)

## Disclaimer

The material in this manual is for informational purposes only. The products it describes are subject to change without prior notice, due to the manufacturer's continuous development program.

Spika makes no representations or warranties with respect to this manual or with respect to the products described herein.

Spika shall not be liable for any damages, losses, costs or expenses, direct, indirect or incidental, consequential or special, arising out of, or related to the use of this material or the products described herein.





To obtain warranty service, please review our Return Policy on our website. Email Spika to request a Return Merchandise Authorization ("RMA") number. If the Products is not covered under warranty (whether because the warranty has expired, the damage is Consumer-induced or otherwise), the consumer can choose to have the products repaired at consumer's expense or returned to consumer at consumer's expense; consumer is responsible for all shipment and service fees associated with repairs or replacements not covered under warranty. Spika will ship only to valid US addresses, excluding APO/FPO/DPO, PO Boxes and US Territories. For security reasons, we are unable to alter the address or redirect the package after the shipment has been made. Any products returned to Spika without an RMA or without proof of purchase will be returned to the consumer at the consumer's expense.

Consumer has 30 days from the date Spika makes its first attempt to contact the consumer to pay for expenses associated with the repair of non-warranty items or the cost to return the items received without an RMA or proof of purchase. If consumer fails to pay for such expenses and/or costs, including but not limited to shipping and handling within such 30-day period, consumer agrees that Spika will have no further responsibility with respect to such returned products and shall have the right to dispose of such returned merchandise in any commercially reasonable manner and apply the proceeds, if any, against the amounts due Spika on account of such expenses and/or costs.

IN NO EVENT WILL SPIKA'S TOTAL CUMULATIVE LIABILITY EXCEED THE PRICE PAID BY CONSUMER FOR THE PRODUCTS. Some states do not allow the exclusion or limitation of incidental or consequential damages, so the above limitation or exclusion may not apply to you.

Spika reserves the right for continuous improvement in both design and manufacture of the products, and warranty claims for retrospective upgrades to existing products design are excluded.

## General Aquatic Safety

Water recreation is both fun and therapeutic. However, it involves inherent risks of injury and death. To reduce your risk of injury, read and follow all product, package and package insert warnings and instructions. Remember, however, that product warnings, instructions and safety guidelines cover some common risks of water recreation, but do not cover all risks and dangers.

For additional safeguards, also familiarize yourself with the following general guidelines as well as guidelines provided by nationally recognized Safety Organizations:

- Demand constant supervision. A competent adult should be appointed as a "lifeguard" or water watcher, especially when children are in and around the pool.
- Learn to swim.
- Take the time to learn CPR and first aid.
- Instruct anyone who is supervising pool users about potential pool hazards and about the use of protective devices such as locked doors, barriers, etc.

## Introduction

Thank you for purchasing the SoundFloat. We worked meticulously to develop and refine the perfect pool float - an inflatable lounge with features to stimulate all of your senses.

This instruction booklet explains the basic operation and care of the unit. Please read them carefully and keep for future reference. This unit features technology that allows you to wirelessly connect your bluetooth device to instantly 'pair and play'.

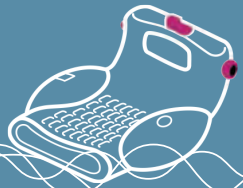
See your device's user manual for details.

## FCC/IC Information

This device complies with Part 15 of the FCC Rules. Operation is subject to the following two conditions:

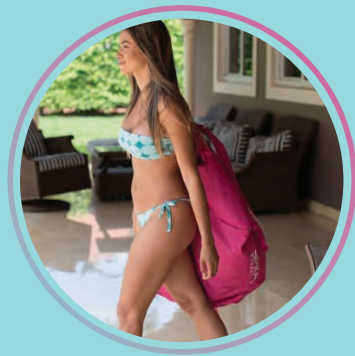
- (1) this device may not cause harmful interference, and
- (2) this device must accept any interference received, including interference that may cause undesired operation.

NOTE : This equipment has been tested and found to comply with the limits for a Class B digital device, pursuant to Part 15 of the FCC Rules. These limits are designed to provide reasonable protection against harmful interference in a residential installation. This equipment generates, uses and can radiate radio frequency energy and, if not installed and used in accordance with the instructions, may cause harmful interference to radio communications. However, there is no guarantee that interference will not occur in a particular installation. If this equipment does cause harmful interference to radio or television reception, which can be determined by turning the equipment off and on, the user is encouraged to try to correct the interference by one or more of the following measures: - Reorient or relocate the receiving antenna. - Increase the separation between the equipment and receiver. - Connect the equipment into an outlet on a circuit different from that to which the receiver is connected. CAUTION: Changes or modifications not expressly approved by the party responsible for compliance could void the user's authority to operate the equipment.



# Maintenance

- Place the unit on a level surface away from sources of direct sunlight or excessive heat.
- Clean your unit with a soft cloth moistened only with mild soap and water. Stronger cleaning agents, such as thinner or similar materials can damage the surface of the unit. Rinse unit with tap water and wipe dry after submersion in salt water or swimming pool.



# Long-term Storage of Your Product

- Store in a cool, dry place.
- Unit should be charged before storing.
- If stored for a long period of time, unit may be unresponsive until charged for a number of hours (depending on discharge level)

4. Damage caused by the equipment with which the products is used.
5. The guarantee does not cover any damage/s, losses, costs or expenses, direct, indirect or incidental, consequential or special, arising out of, or related to the product.
6. Any products that has had its serial number altered, defaced or removed, shows evidence of tampering, has non-conforming or non-Spika housing or casing, or has damage caused by the equipment with which the products is used.
7. Any defect occurring after the expiration of the warranty period, or occurring due to use not in accordance with the documentation.
8. Units purchased through deal sites and discount stores (Including but not limited to, Groupon, Living Social, Woot, etc.).
9. Units purchased from an unauthorized retailer.

In addition, Spika reserves the right to refuse warranty claims against products or services that are obtained and/or used in contravention of the laws of any country. Repairs will be warranted for 60 days from the date Spika ships the products back to you.

THE WARRANTIES AND REMEDIES CONTAINED HEREIN ARE EXCLUSIVE AND IN LIEU OF ALL OTHER WARRANTIES EXPRESS, IMPLIED, OR STATUTORY, INCLUDING ANY LIABILITY ARISING UNDER ANY WARRANTY OF MERCHANTABILITY OR FITNESS FOR A PARTICULAR PURPOSE, STATUTORY OR OTHERWISE. THIS WARRANTY GIVES YOU SPECIFIC LEGAL RIGHTS, WHICH MAY VARY FROM STATE TO STATE.

IN NO EVENT SHALL SPIKA BE LIABLE FOR ANY INCIDENTAL, SPECIAL, INDIRECT, OR CONSEQUENTIAL DAMAGES, WHETHER RESULTING FROM THE USE, MISUSE, OR INABILITY TO USE THIS PRODUCTS OR FROM DEFECTS IN THE PRODUCTS. SOME STATES DO NOT ALLOW THE EXCLUSION OF INCIDENTAL OR CONSEQUENTIAL DAMAGES, SO THE ABOVE LIMITATIONS MAY NOT APPLY TO YOU.

This limited warranty extends only to the original purchaser of the Products and is not assignable or transferable to any subsequent purchaser or user. Products purchased through online auctions (excluding <https://www.soundfloat.co/>) are not covered under warranty. Proof of purchases from online auctions are not accepted as verification of warranty. To obtain warranty service, an original or copy of the sales receipt from the original retailer is required. Spika will not replace missing components from any package purchased through online auctions.

# Limited Warranty

## Consumer Limited Warranty

Spika Products are warranted to be free from defects in materials or workmanship for 60 days from the date of purchase ("Warranty Period"). Proof of purchase (invoice or paid Order confirmation) must be provided when requesting service under the Warranty. Where Products are already faulty or damaged upon delivery, photographic evidence of the damages must be submitted to Spika before the Products will be repaired or replaced in accordance with these terms.

Within this 60-day Warranty Period, Consumer's sole and exclusive remedy and Spika's sole and exclusive responsibility under this warranty will be repair or replacement of the defective Products during the one limited Warranty Period, at Spika's sole and absolute discretion. Spika reserves the right to replace the Products or relevant part with the same or equivalent products or part, rather than repair it. **SUCH REMEDY SHALL BE YOUR SOLE AND EXCLUSIVE REMEDY FOR ANY BREACH OF WARRANTY.** Such repairs or replacement will be made at no charge to the consumer for parts or labor. Products may be repaired or replaced using new or remanufactured parts or products or refunded to consumer the amount equal to the purchase price paid by

the consumer for the products, less shipping, taxes and other fees, at Spika's sole discretion. Consumer is responsible for all shipping associated with returning the Products to Spika's designated service center. This warranty does not apply to:

1. Damage caused by normal wear and tear, abnormal use or conditions, misuse, neglect, abuse, accident, improper handling or storage, defects or damages resulting from service, testing, adjustment, installation, maintenance, alteration, including without limitation, software changes, or modification in any way by someone other than Spika, improper use of any electrical source, undue physical or electrical stress, operator error, non-compliance with instructions or other acts which are not the fault of Spika, including damage or loss during shipment or transit.
2. Damage caused by service performed by anyone who is not an authorized service provider of Spika.
3. Damage from external causes such as floods, storms, fires, sand, dirt, earthquakes, an Act of God, corrosive environments, electrical surges, battery leakage, theft, or damage caused by the connection to other products not recommended for interconnection.

# Internal Rechargeable Lithium-ion Battery

This device uses an internal rechargeable lithium-ion battery that should last the lifetime of the device. If you suspect your battery may be dead, try charging it several times and try resetting the unit.

## WARNING/DISPOSAL OF UNIT

If the battery has died you should contact SPIKA INTL. to determine if the Limited Warranty covers your SoundFloat and your situation. If you do not wish to contact Spika, you should follow the disposal instructions below:

- Never dispose of used batteries/electronics with ordinary solid wastes, since they contain toxic substances.
- Always dispose of used batteries/electronics in accordance with the prevailing community regulations that apply to the disposal of batteries/electronics. If there are no local regulations concerning battery/electronics disposal, please dispose of the device in a proper waste bin.
- Many electronics retailers now recycle batteries and other electronic components at no charge. Check to see which ones in your area do so. which ones in your area do so.

## GENERAL BATTERY PRECAUTIONS

- Never use or charge a battery if it appears to be leaking, discolored, deformed, or in any way abnormal.
- Never disassemble the unit or attempt to remove battery as that could cause leakage of alkaline solution or other electrolytic substance.
- Always confirm that the temperature is 5°C - 35° C (41° - 95° Fahrenheit) before you charge the battery. Leakage or deterioration of the battery may occur if this warning is not heeded.
- Never expose a battery to any liquid.
- Never expose a battery to excessive heat such as direct sunlight or fire. Never use a battery pack in an unventilated vehicle where excessive internal temperatures may be encountered.
- Always keep batteries out of the reach of infants and small children.
- DO NOT charge near water.
- Always close battery compartment when battery is out. DO NOT get water in the battery compartment.

# Features

The SoundFloat incorporates the following features:

- Memory-foam feel, patent pending, counter-balanced buoyancy technology (with adjustable comfort-air compartments).
- Ultra-thick PVC Puncture resistant materials.
- Over sized cup holder.
- A triple-sealed, wireless, touch-sensitive waterproof pouch that protects your device from water and sun.
- 80-18K Hz audio with 20W amplifier; wireless, waterproof surround sound speakers, and dual 60mm subwoofers.
- A 12 hour battery life (when played at medium volume), and the ability to use SoundFloat as a power bank for your phone and mobile devices.
- The ability to fully charge the SoundFloat in 3-5 hours or get a quick charge from your car or other portable power source on the way to your destination.
- IPX 6/7 waterproofing, 350x battery charging cycles, and limited warranty.
- Place hands-free calls right from your SoundFloat speakers.
- 75 foot outdoor Bluetooth range.
- Intuitive controls and LED indicators.
- Custom-made backpack for storage/transport.



Comfort Air Technology



Puncture Resistant



Large Cup Holder



WaterProof Pouch



WaterProof Speakers



Power Bank



Quick Charge



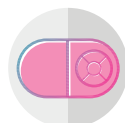
IPX 6/7  
WaterProofing



Hands-free  
Calling



75 foot  
Bluetooth Range



Intuitive  
Controls



Portable Design

# Care and Maintenance

Do not subject the unit to excessive force, shock, dust or extreme temperature.

Do not tamper the internal components of the unit.

Clean your unit with a damp (never wet) cloth. Solvent or detergent should never be used.

Avoid leaving your unit in direct sunlight or in hot, humid or dusty places.

Keep your unit away from heating appliances and sources of electrical noise such as fluorescent lamps or motors.





# Using Bluetooth: Pairing Your Device to the SoundFloat

## Bluetooth pairing/connection :

1. With the Battery correctly installed. Hold the Power Button on.
2. The unit will search nearby Bluetooth device and the Blue LED indicator will blink. From the Android smart phone or Apple device (iPad/iPhone/iPod touch), turn on its Bluetooth function. Search for the device name (SoundFloat) on Android smartphone or Apple device, select, pair and connect. The blue LED indicator of the unit lights steadily. When the unit is turned on from standby mode, it will automatically search and connect the device last connected, no need to re-scan and pair.
3. Playback your Apple device or Android smartphone music.
4. You may adjust both the volume control of your mobile device and the volume control of this unit to find the most desirable volume setting.
  - (a) You may tap the / button from the mobile device to Play / Pause the mobile device music.
  - (b) Press the button on your mobile device to skip tracks forward / backward.

## Pairing with a Different Device

When you power ON the SoundFloat, it will automatically link with the previously paired Bluetooth device as long as that device is still within range (about 30 feet).

## Using the Speakerphone features

NOTE: The unit must be powered on to receive a call. A Bluetooth phone must be linked.

1. When a call is received, playing music is muted to hear the ring tone. Press the talk button on your mobile device to answer the call, or press the end button to ignore it.
2. When a call is completed, end the call on your mobile device to resume previous function.



# Important Safety Information

When used in the directed manner, this unit has been designed and manufactured to ensure your personal safety. However, improper use can result in potential electrical shock or fire hazards. Please read all safety and operating instructions carefully before installation and use, and keep these instructions handy for future reference. Take special note of all warnings listed in these instructions and on the unit.

## Heat & Flame

The unit should be located far away from heat sources such as radiators, heat registers, stoves or other appliances (including amplifiers) that produce heat. No open flame sources, such as lighted candles, should be placed on or near the SoundFloat.

## Power Source

The unit should be connected to a power supply only of the type described in the operating instructions or as marked on the appliance. ALWAYS REMOVE AND DISCONNECT THE SOUND FLOAT FROM ALL POWER SOURCES BEFORE USING IT IN, ON, AROUND, OR NEAR WATER.

## Cleaning

The unit should be cleaned only as recommended. See the

section "Care and Maintenance" of this manual for cleaning instructions.

## Damage Requiring Service

The SoundFloat should be serviced by qualified service personnel when:

- A. The power supply cord or plug has been damaged.
- B. Objects have fallen into or liquid has been spilled into the enclosure.
- C. The unit has been dropped or the enclosure damaged.
- D. The unit exhibits a marked change in performance or does not operate normally.

## Servicing

The user should not attempt to service the unit beyond those methods described in the user's operating instructions. Service methods not covered in the operating instructions should be referred to qualified service personnel. Contact Spika INTL for any issues.

## Environment Attention

Do not dispose of batteries improperly, pay attention to the environmental aspects of battery disposal and the use of unit in moderate climates.

## Setting Up the SoundFloat/ Turning the SoundFloat ON and OFF

The SoundFloat will come with a half charge of battery power. For a full charge, remove the battery from the SoundFloat control unit on the top of the float. Use the included micro usb to charge the battery. Once the battery light is green, you will have a full charge. Only charge inside, never outside, to avoid damage to the battery.

Once fully charged insert the battery back into the SoundFloat Control Center. Ensure the battery is screwed down tight. Cover the battery compartment with the rubber lid. Make sure the lid is closed.

Press and Hold the POWER button in the center of the Button Pad to turn the SoundFloat speakers on. You will here an audio tone and voice command that says "Ready to Pair."

To turn off, hold the power button for 5 seconds, you will hear an audio reminder to ensure it is off. The Speaker will also turn off after 15 minutes of inactivity.

## Waterproof Information

The unit is IPX7 waterproof rated, meaning it is immersible for up to 30 minutes at a depth of 1 meter (3 feet). It will typically withstand rain, snow and being submersed in shallow water. Longer duration or deeper immersion that exceeds the tested limits may cause product failure and void the warranty.

DO NOT immerse speaker unit.

DO NOT immerse the unit in water deeper than 1 meter (~3 feet).

Make sure storage compartment and surrounding surfaces are completely dry before opening to prevent moisture from damaging the internal electronics.

Keep the SoundFloat and battery storage compartment free of dirt, sand, or other objects that can interfere with proper sealing. If for any reason the battery compartment is not sealed tightly, water may enter the unit and may cause permanent damage to the battery.

Rinse with tap water after immersion in salt water or swimming pool.

DO NOT clean unit with oily soaps or use chemicals or solvents. Clean with damp cloth.

## Charging the SoundFloat

**Charging the SoundFloat.** To charge the internal battery for portable operation, connect the included AC adaptor to the DC jack located on the side of the unit and connect the other end to a working wall outlet. While charging, the Battery Charge Indicator light on the front of the unit will glow solid red. Once fully charged the light will glow solid green. For first time use, make sure to fully charge the internal battery for about 8 hours.

**Charging and Battery Status.** While operating on the internal battery, when the unit is ON the Battery/Charging Status Indicator light on the front of the unit automatically appears every 5 minutes.

TIP: To check battery status at any time (whether unit is on or off, operating on battery or AC power), press and hold both the - Button or + Button at the same time for 2 seconds.

