

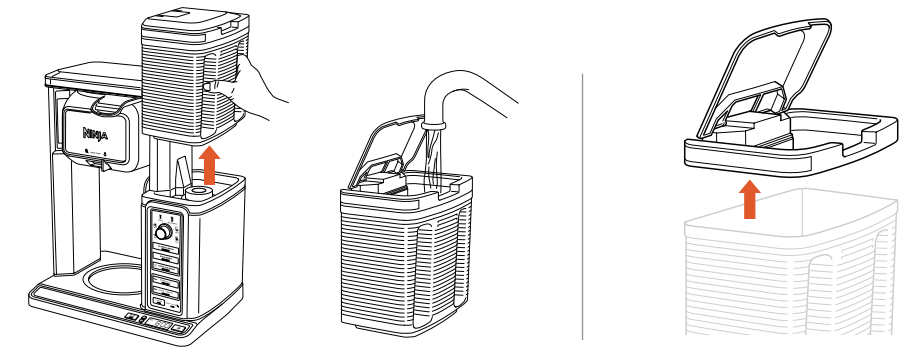
Please make sure to read the enclosed Ninja® Owner's Guide prior to using your unit.

# NINJA

## COFFEE BAR

# QUICK START GUIDE

### 1 FILLING THE WATER RESERVOIR

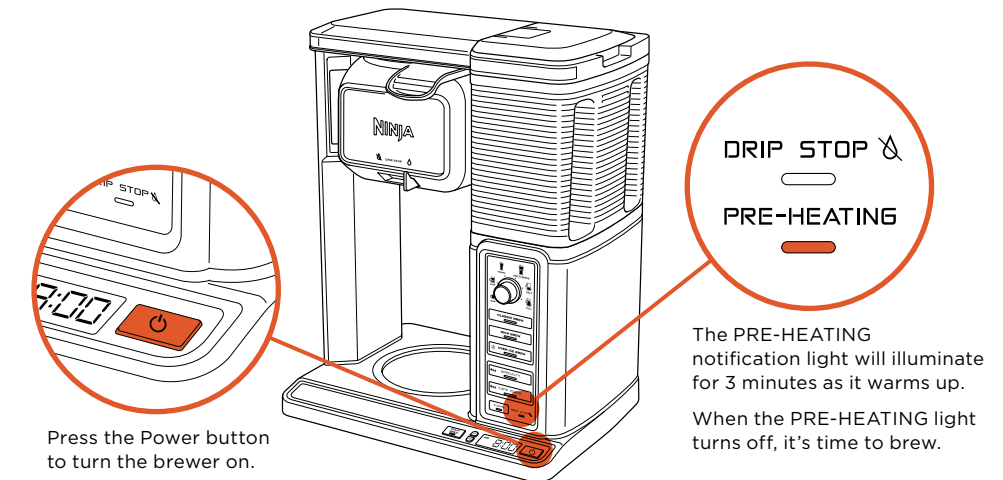


**FILL TO THE MAX LINE.**  
Fill to the max line and let Auto-iQ™ take it from there.

The water reservoir lid is removable for easy cleaning and is dishwasher safe.

### 2 PLUG IN, POWER UP, AND PRE-HEAT

Our pre-heat function ensures your first cup will be as hot as it possibly can be. If you don't have time to wait, you can still brew before pre-heat is fully activated.

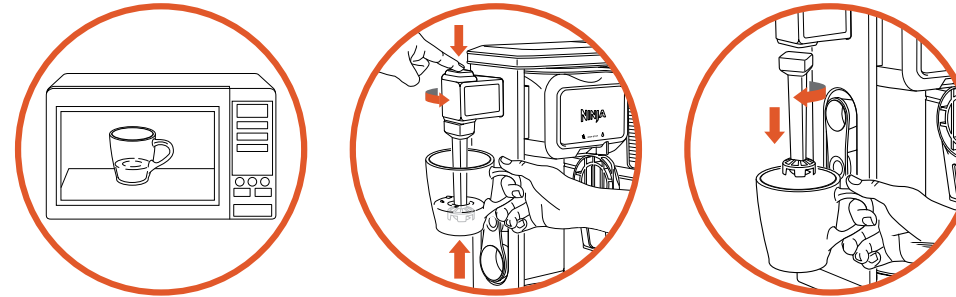


Press the Power button to turn the brewer on.

DRIP STOP  
PRE-HEATING

The PRE-HEATING notification light will illuminate for 3 minutes as it warms up. When the PRE-HEATING light turns off, it's time to brew.

### FROTHING



**1.** Add milk to your cup until it is about 1/3 full, then microwave for 45-60 seconds.

**2.** Hold the cup under the frother and submerge the whisk just below the surface of the milk. Froth for 45-60 seconds.

**3.** Remove the frother whisk by twisting clockwise. Keep your cup below the whisk while you carry it to your sink or dishwasher for easy cleaning.

**CAUTION:** DO NOT reach across top of brewer to froth during brewing. Steam is released from vent on top of brewer and can result in a steam burn.

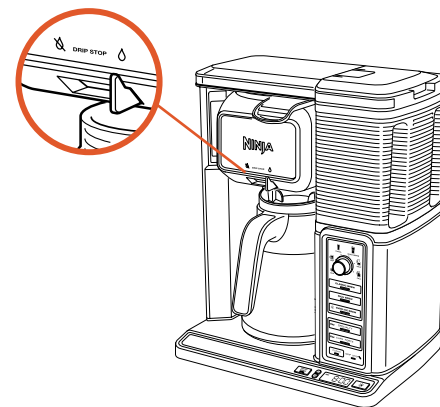
### DRIP STOP

#### CAN'T WAIT FOR THAT FIRST CUP? THEN DON'T

Simply close the drip stop to pause the carafe brew cycle, and then pour your first cup. Reopen the drip stop to continue the brew.

#### STOP THE DRIPS AFTER THE BREW

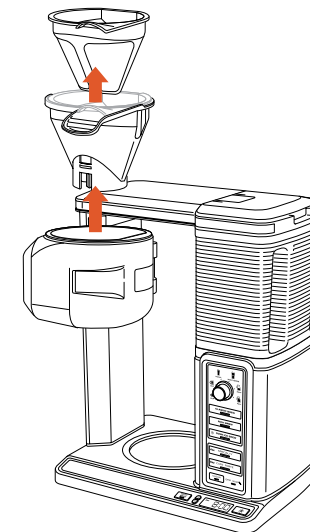
At the end of a brew, close the drip stop to prevent drops of coffee from escaping.



### CLEANUP

#### REMOVABLE BREW BASKET FOR EASY CLEANUP

To avoid spills and drips, keep the filter inside the removable brew basket as you carry it to the trash.

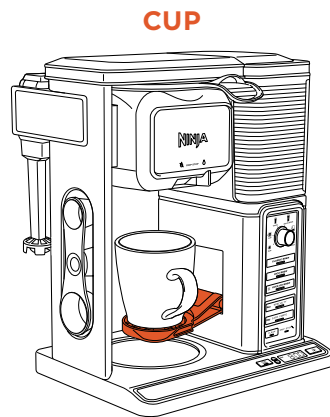


## BEFORE YOUR FIRST BREW

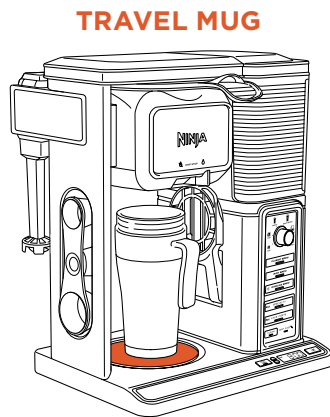
Before first use, run two Full Carafe Clean cycles. With your water reservoir filled to the max line with fresh water, your brewer plugged in, and the carafe in place, press the CLEAN button to start a cycle.

(Discard the brewed water after each cleaning cycle.)

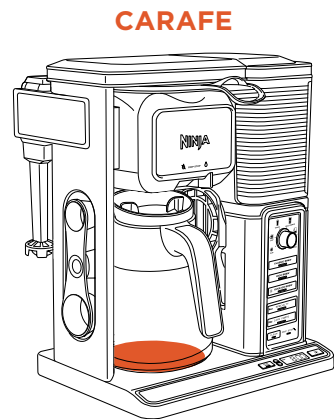
**3 POSITIONING YOUR MUG OR CARAFE**



Pull down the cup platform to set your mug on it.

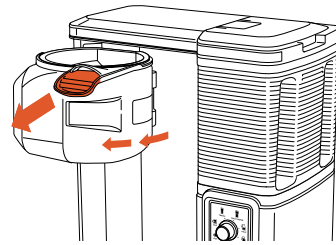


Place your XL Cup or XL Multi-Serve Tumbler on the base of the brewer.



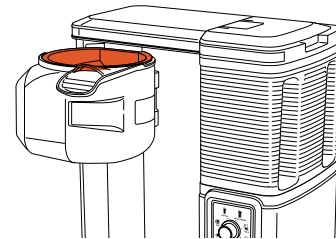
Place your carafe on the base of the brewer.

**4 CHOOSE YOUR FILTER**



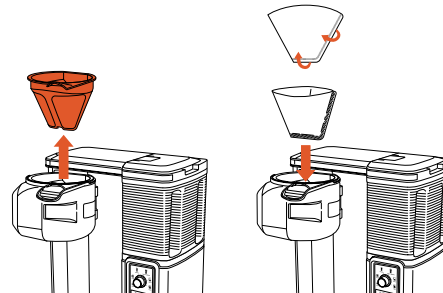
Pull the handle to swing the brew basket open.

**IF USING PERMANENT FILTER**



The permanent mesh filter is already in place—you can add your coffee directly into it.

**IF USING PAPER FILTER**



To use a paper filter, first remove the permanent filter, then fold a #4 paper cone filter along the seams and insert firmly into the removable filter carrier.

**5 THE BREWING PROCESS**

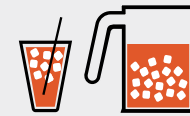
**HOW TO BREW CLASSIC, RICH, OR OVER ICE**



**CLASSIC**  
Smooth, well-balanced flavor.



**RICH**  
Richer than classic with more intense flavor that really stands up to milk, cream, or flavoring.

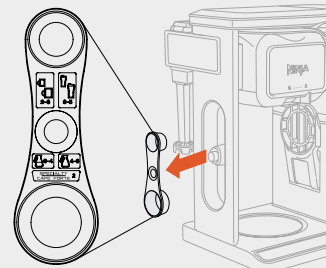


**OVER ICE**  
Specially designed to brew hot over ice for freshly brewed iced coffee that is not watered down.

**Always fill your cup, travel mug, or carafe to the top with ice cubes before brewing.**

**IMPORTANT NOTICE:** Do not brew into glassware. However, the provided glass carafe is safe to use due to the specialized glass material used.

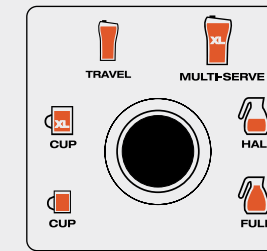
**CHOOSE A SCOOP**



Use these scoop measurements no matter which brew style you make.

SERVING SIZE	NINJA SCOOP™
	2-3 small scoops
	3-5 small scoops
	3-4 big scoops
	4-6 big scoops

**CHOOSE A SIZE**



Make sure to use a cup that is big enough for the brew size you've selected.

	CUP	9.5 oz.
	XL CUP	11.5 oz.
	TRAVEL MUG	14 oz.
	XL TRAVEL MUG	18 oz.

\*approximate brew volumes

**START BREWING**

Simply press your desired brew type button and the brew will begin.

**THERE WILL BE A PAUSE. THAT'S OKAY.**

The pause is just part of the pre-infusion cycle that unlocks the full flavor of your coffee.

**CLASSIC BREW**

**RICH BREW**

**OVER ICE BREW**

**HOW TO BREW SPECIALTY OR CAFE FORTE**

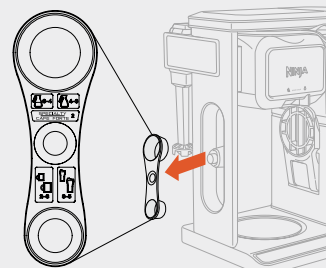


**SPECIALTY (4 OZ.)**  
An ultra-rich concentrate that allows you to create your favorite coffeehouse-style drinks, one cup at a time.



**CAFE FORTE (8 OZ.)**  
A robust cupful of complex flavors, bringing out the nuances of your coffee, for a full-bodied gourmet experience to be enjoyed black or au lait.

**CHOOSE A SCOOP**



The double-sided Ninja Scoop™ has built-in markings to make measuring simple.

SERVING SIZE	NINJA SCOOP™
<b>SPECIALTY (4 oz.)</b>	<b>2 big scoops</b>
<b>CAFE FORTE (8 oz.)</b>	<b>2 big scoops</b>

**NO NEED TO CHOOSE A SIZE**

Our Specialty Brew is always 4 oz. and Cafe Forte is always 8 oz., so you don't need to choose a size for these one-touch brews.

**START BREWING**

**THERE WILL BE A PAUSE**

That's okay, it's just part of the pre-infusion cycle that unlocks the full flavor of your coffee.

**SPECIALTY (CONCENTRATED) 4oz**

**CAFE FORTE 8oz**