

S M A L L

the big world of the small size



Civilization of Beauty

S M A L L

the big world of the small size

INDICE



SMALL	5
Passato e presente si incontrano <i>Past and present meet.</i> <i>Quand passé et présent se rencontrent.</i> <i>Vergangenheit und gegenwart treffen aufeinander.</i>	8
Materia <i>Material. Matière. Stofflichkeit.</i>	11
Colore <i>Colour. Couleur. Farbe.</i>	12
Forma <i>Shape. Forme. Format.</i>	15
Superficie <i>Surface. Surface . Oberfläche.</i>	16
<hr/>	
Small - 12 colours	19
Trend	41
Amalfi	67
<hr/>	
Parte tecnica <i>Technical section. Partie technique. Technischer Teil.</i>	77



Civilization of Beauty

S M A L L



La Fabbrica debutta nel piccolo formato in grande stile.



Con la serie Small, La Fabbrica esordisce nel mondo del rivestimento in monoporosa. La prima serie prodotta nel piccolo formato che si integra con l'ampia offerta di prodotti in gamma: dalle grandi lastre effetto marmo, materico e pietra del brand AVA ai formati più contenuti come il 100x100 e il 60x120 del marchio La Fabbrica. Accattivanti e colorate, le minipiastrelle si prestano per svariati progetti di design dagli abbinamenti più tradizionali a soluzioni più audaci.

La Fabbrica debuts in the small size in style.

With the Small collection, La Fabbrica makes its debut in the world of monoporosa wall tiles. The first collection produced in the small size to complement the wide offering of products in the range: from the large marble, texture and stone effect slabs of the AVA brand to the smaller sizes such as 100x100 and 60x120 of the La Fabbrica brand. Attractive and colourful, mini tiles lend themselves to a variety of design projects from more traditional combinations to bolder solutions.



La Fabbrica débute avec un petit format de grand style.

Avec la collection Small, La Fabbrica se lance dans le monde du revêtement en monoporeuse. La première collection, produite en petit format, s'intègre dans la vaste gamme de produits : des grandes dalles effet marbre, matière et pierre de la marque AVA aux formats plus restreints 100x100 et 60x120 de la marque La Fabbrica. Captivants et colorés, ces mini-carreaux se prêtent à une multitude de projets de design, des associations plus traditionnelles au solutions plus audaces.



La Fabbrica gibt sein Debüt im Kleinformat im großen Stil.

Mit der Serie Small gibt La Fabbrica sein Debüt in der Welt der Monoporosa-Wandfliesen. Die erste im Kleinformat produzierte Serie wird die breite Produktpalette des Sortiments ergänzen: von den großen Platten in Marmor-, Material- und Natursteinoptik der Marke AVA bis zu den kleineren Formaten wie 100x100 und 60x120 der Marke La Fabbrica. Die attraktiven und farbenfrohen Minifliesen eignen sich für eine Vielzahl von Designprojekten, von eher traditionellen Kombinationen bis hin zu kühnen Lösungen.



PASSATO E PRESENTE SI INCONTRANO



I criteri artigiani del passato si uniscono alle tecnologie attuali.



La serie Small si presenta attraverso una carrellata di nuovi fondi dal look acquerello elaborati sulla materia ceramica seguendo i criteri artigiani del passato ma con il know-how del presente. Una proposta che soddisfa più gusti attraverso un'ampia gamma di suggestioni estetiche in cui la superficie, le tinte e le trame creano, come dei quadri, delle sensazioni capaci di far vibrare gli spazi e di dare un senso di carica avvolgente.

PAST AND PRESENT MEET.

The craftsmanship criteria of the past are combined with today's technologies.

Small collection is a round-up of new watercolour-look backgrounds on ceramics created following the craftsmanship of the past with the know-how of the present. A proposal that satisfies all tastes through a wide range of aesthetic suggestions in which surface, material, colours and textures create, like paintings, sensations capable of making spaces vibrate and give a sense of enveloping charge.



QUAND PASSÉ ET PRÉSENT SE RENCONTRENT

Les critères artisanaux du passé s'associent aux technologies actuelles.

La collection Small se présente à travers un ensemble de nouveaux fonds au look aquarelle, élaborés sur le matériel céramique créé suivant des critères artisanaux du passé mais à l'aide du savoir-faire du présent. Une gamme qui répond à différents types de goûts grâce à une vaste gamme de suggestions esthétiques où la surface, le matériel, les teintes et les trames créent, tels des tableaux, des sensations qui savent faire vibrer les espaces et donner une énergie enveloppante.



VERGANGENHEIT UND GEGENWART TREFFEN AUFEINANDER.

Die handwerklichen Kriterien der Vergangenheit werden mit den Technologien von heute kombiniert.

Die Serie Small zeigt sich mit neuen Untergründen in Aquarelloptik auf keramischen Materialien, die mit der Handwerkskunst der Vergangenheit und dem Know-how der Gegenwart geschaffen wurden. Ein Vorschlag, der alle Geschmäcker durch eine breite Palette von ästhetischen Suggestionen befriedigt, bei denen die Oberfläche, das Material, die Farben und die Texturen wie Gemälde Empfindungen erzeugen, die in der Lage sind, Räume zum Schwingen zu bringen und ein Gefühl der Umhüllung zu vermitteln.





MATERIA

Caratteristiche della ceramica a pasta bianca.

Detta anche monoporosa, la ceramica in pasta bianca si realizza con alcune materie prime utilizzate per il gres porcellanato (argille, sabbie) ma cotta a temperatura inferiore. Questo fa sì che il risultato finale combini insieme leggerezza, facilità di lavorazione e resistenza. L'effetto vetroso della superficie deriva dall'applicazione dello smalto che, oltre a garantire impermeabilità e protezione, conferisce alle piastrelle colori più brillanti rendendole particolarmente indicate per il rivestimento.

MATERIAL

Characteristics of white-body ceramics.

Also known as monoporosa, white-body ceramics is made from some raw materials used for porcelain stoneware (clays, sands and a proportion of recycled materials) but fired at a lower temperature. This ensures that the end result combines lightness, ease of processing and strength.

The glassy effect of the surface comes from the application of glaze, which not only provides waterproofing and protection but also gives it brighter colours, making it particularly suitable for wall application.

MATIÈRE

Les caractéristiques de la céramique à pâte blanche.

Également appelée monoporeuse, la céramique à pâte blanche est réalisée à partir de quelques matières premières qui sont utilisées pour le grès cérame (argile, sables) mais qui sont cuites à une température plus basse.

Le résultat final associe ainsi légèreté, facilité de traitement et résistance.

L'effet vitreux de la surface dérive de l'application de l'émail qui garantit l'imperméabilité et protection, mais confère également des couleurs plus brillantes en la rendant particulièrement adaptée au revêtement.



STOFFLICHKEIT

Eigenschaften der weißscherbigen Keramik.

Die auch als Monoporosa bezeichnete weißscherbige Keramik wird aus einigen Rohstoffen wie Feinsteinzeug hergestellt (Tone, Sande), jedoch bei niedrigeren Temperaturen gebrannt, wodurch das Endergebnis Leichtigkeit, einfache Verarbeitung und Festigkeit vereint.

Die glasige Wirkung der Oberfläche entsteht durch das Auftragen von Glasuren, die nicht nur für Wasserdichtigkeit und Schutz sorgen, sondern auch für leuchtende Farben, die sich besonders gut als Wandbelag eignen.

COLORE



Palette cromatiche dal gusto attuale per progetti creativi.

Il colore è al centro dei progetti di design per palette cromatiche dal gusto attuale. Una ricca gamma cromatica composta da 12 tinte che soddisfano i gusti più disparati: sono disponibili palette neutre, altre intense e vivaci, altre ancora dai toni tenui e dalle tinte pastello. Ogni colore presenta una stonizzazione composta da più di 100 facce differenti, dove le lievi differenze di luminosità, creano degli intriganti movimenti ottici esprimendo tutta la loro personalità da soli o abbinati ai pattern della linea Trend e Amalfi.

COLOUR

Contemporary colour palettes for creative projects.

Colour is at the heart of design projects for colour palettes with a contemporary style. A rich colour range consisting of 12 shades to suit a wide range of tastes: neutral palettes are available, others are intense and lively, and still others have soft tones and pastel shades. Each colour presents a colour shading composed of more than 100 different faces, where the slight differences in brightness create intriguing optical movements expressing their full personality alone or combined with the patterns of the Trend and Amalfi lines.

COULEUR

Palettes chromatiques au goût actuel, pour des projets créatifs.

La couleur est au cœur des projets design, pour des palettes chromatiques très actuelles. Une gamme chromatique riche, composée de 12 teintes qui répondent aux goûts les plus disparates: palettes neutres, intenses ou vives, ou encore nuances pâles aux teintes pastel. Chaque couleur présente une stonisation composée de plus de 100 faces différentes, où les légères différences de luminosité créent des mouvements optiques intrigants en exprimant toute leur personnalité, seuls ou associés aux motifs de la collection Trend et Amalfi.

FARBE

Zeitgemäße Farbpaletten für kreative Projekte.

Die Farbe steht im Mittelpunkt der Designprojekte für Farbpaletten mit zeitgenössischem Charakter. Eine reichhaltige Farbpalette mit 12 Farbtönen für die unterschiedlichsten Geschmäcker: Neutrale Paletten, andere sind intensiv und lebendig, und wieder andere haben sanfte Töne und Pastellfarben. Jede Farbe zeigt eine Schattierung, die aus mehr als 100 Varianten besteht, wobei die leichten Helligkeitsunterschiede faszinierende optische Bewegungen erzeugen, die allein oder in Kombination mit den Mustern der Linien Trend und Amalfi ihre ganze Persönlichkeit zum Ausdruck bringen.





FORMA



Sei formati per creare svariati motivi geometrici.



Un gioco di forme e formati: dal quadrato 10x10 all'esagona 12,4x10,7 fino ai listelli in 5,1x16,1 e 6,5x20 cm.

La serie si arricchisce di due linee decorative fatte di classiche forme geometriche che si integrano sapientemente ai 12 colori dei fondi. Trend, la linea dai motivi geometrici, è perfetta per chi ama i pattern grafici, caratterizza gli ambienti con semplicità e leggerezza.

Con i suoi 15 pattern dal gusto retrò-chic, Amalfi invece si propone come un omaggio alla tradizione della maiolica mediterranea trasmettendo l'essenza di una terra ricca fatta di luoghi incantevoli. Integrati in una serie moderna, eclettica e versatile come la Small, Trend e Amalfi rappresentano un originale tocco di eleganza che strizza l'occhio al vintage.

SHAPE

Six sizes to create a variety of geometric patterns.

An interplay of shapes and sizes: from the 10x10 square to the 12.4x10.7 hexagonal and the 5.1x16.1 and 6.5x20 cm. strips.

The collection is enriched with two decorative lines of classic geometric shapes that cleverly complement the 12 colours of the backgrounds. Trend, the line with geometric patterns, is perfect for those who love graphic patterns, characterising the room with simplicity and lightness.

With its 15 retro-chic patterns, Amalfi on the other hand is a tribute to the tradition of Mediterranean majolica, conveying the essence of a rich land of enchanting places. Integrated in a modern, eclectic and versatile collection such as Small, Trend and Amalfi represent an original touch of elegance that winks at vintage.

FORME

Six formats pour créer une multitude de motifs géométriques.

Jeu de formes et de formats : du carré 10x10 à l'hexagone 12,4x10,7, jusqu'aux plaques 5,1x16,1 et 6,5x20 cm.

La collection s'enrichit de deux lignes décoratives faites de formes géométriques classiques qui s'intègrent savamment avec les 12 couleurs des fonds. Trend, la collection aux motifs géométriques, parfaite pour ceux qui aiment les motifs graphiques, caractérise l'espace avec simplicité et légèreté. Avec ses 15 motifs au style rétro-chic, Amalfi se propose en revanche de rendre hommage à la tradition des faïences méditerranéennes en transmettant l'essence d'une terre riche, faite de lieux enchanteurs. Intégrées dans une collection moderne, éclectique et versatile comme Small, Trend et Amalfi représentent une touche d'élégance originale, un clin d'œil au vintage.

FORMAT

Sechs Formate für eine Vielzahl von geometrischen Mustern.

Ein Wechselspiel von Formen und Formaten: vom quadratischen 10x10 über das Sechseck 12,4x10,7 bis zu den Riemen 5,1x16,1 und 6,5x20 cm.

Die Serie wird durch zwei dekorative Linien mit klassischen geometrischen Formen bereichert, die die 12 Farben der Untergründe ergänzen. Trend, die Linie mit den geometrischen Mustern eignet sich perfekt für die Ausstattung mit grafischen Mustern, die den Raum mit Schlichtheit und Leichtigkeit charakterisieren. Amalfi hingegen ist mit seinen 15 retro-chicen Mustern eine Hommage an die italienische Majolika-Tradition und vermittelt die Essenz eines reichen Landes mit bezaubernden Orten. Integriert in eine moderne, eklettische und vielseitige Serie wie Small, Trend und Amalfi repräsentieren sie einen originellen Hauch von Eleganz mit einem Hauch von Vintage.

SUPERFICIE



Effetti di luce che esaltano le naturali imperfezioni della materia.



La luce ricopre un ruolo fondamentale nella resa finale di posa. Essa si infrange e si riflette in sinuosi giochi di luce donando alle superfici dall'aspetto vetroso un morbido effetto riflesso e creando interessanti movimenti mai scontati e sempre diversi.

SURFACE

Light effects that enhance the natural imperfections of matter.



Light plays a key role in the final performance of the installation. It shatters and reflects in sinuous plays of light, giving the glassy-looking surfaces a soft reflection effect and creating sinuous movements that are never predictable and always different.

SURFACE

Des effets de lumière qui soulignent les imperfections naturelles de la matière.



La lumière joue un rôle fondamental dans le rendu final de la pose. Elle se brise et se reflète à travers des jeux de lumière sinueux, donnant aux surfaces à l'aspect vitreux un effet réfléchi souple et créant des mouvements sinueux toujours différents, jamais banals.

OBERFLÄCHE

Lichteffekte, die die natürlichen Unvollkommenheiten der Materie hervorheben.



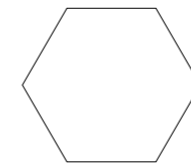
Bei der Gesamtwirkung einer verlegten Oberfläche spielt das Licht eine Schlüsselrolle. Es zersplittert und reflektiert in gewundenen Lichtspielen, was den glasigen Oberflächen einen weichen Reflexionseffekt verleiht und gewundene Bewegungen erzeugt, die nie vorhersehbar und immer anders sind.





S M A L L

The big world of the small size



12,4x10,7
5"x4 1/4"
Bright



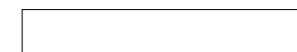
10x10
4"x4"
Bright



6,5x20
2 1/2"x8"
Bright



5,1x16,1
2"x6 1/3"
Bright



Pencil bullnose 3x20
1 1/4"x8"
Bright



Jolly 1,2x20
1/2"x8"
Bright





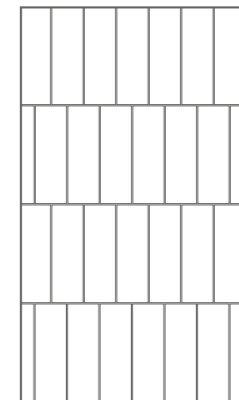
ABBINAMENTO IN FOTO
Suggested Matching

SCHEMA DI POSA
Laying scheme

WALL



Prussian
6,5x20_2½"x8"

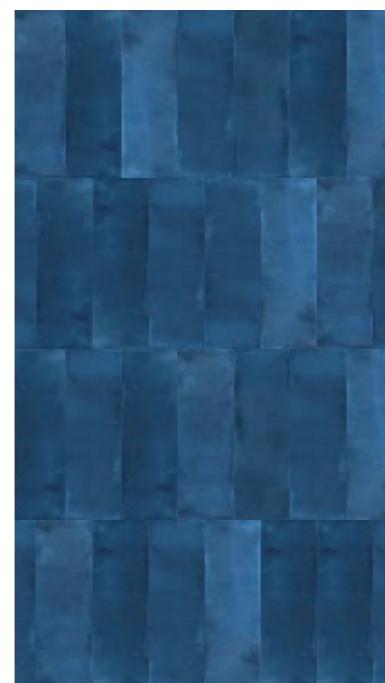


MIXED FLOOR

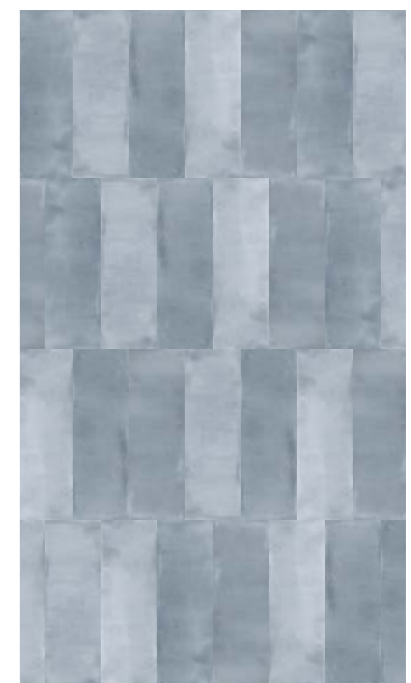


La Fabbrica
Amazon Arara Chevron
7,5x40,7_3"x16"
Nat

ALTRE VARIANTI
More suggestions



Navy 6,5x20_2½"x8"



Light Blue 6,5x20_2½"x8"

ABBINAMENTO IN FOTO
Suggested Matching

WALL



Sage
5,1x16,1_2"x6⅓"



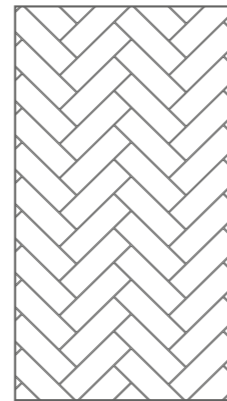
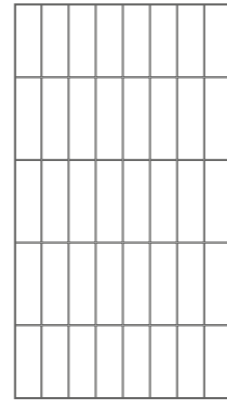
Flamingo
5,1x16,1_2"x6⅓"

MIXED FLOOR

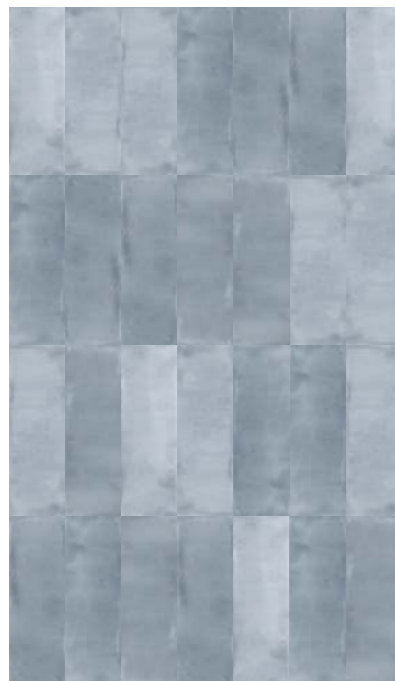


**La Fabbrica
Ca' Foscari Avana**
20x120_8"x48"
Nat Ret

SCHEMA DI POSA
Laying scheme



ALTRE VARIANTI
More suggestions



Light Blue, Ocher 5,1x16,1_2"x6⅓"





ABBINAMENTO IN FOTO
Suggested Matching

SCHEMA DI POSA
Laying scheme

WALL



Light Blue
10x10_4\"x4\"



Light Blue
5,1x16,1_2\"x6 2/3\"

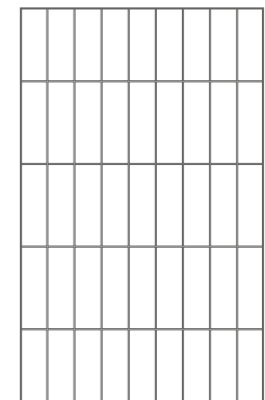
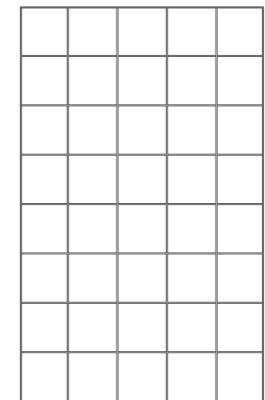


Navy
5,1x16,1_2\"x6 2/3\"

MIXED FLOOR



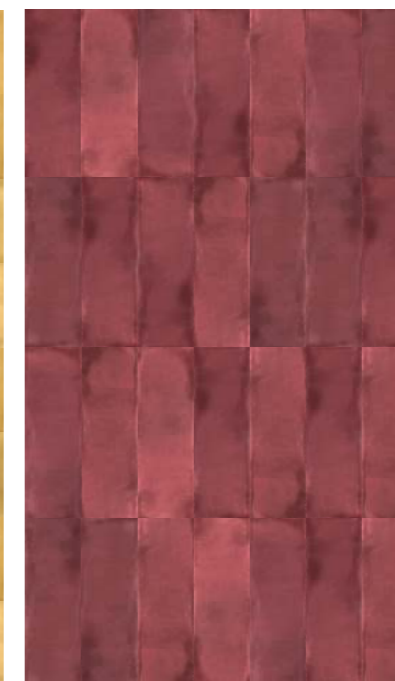
La Fabbrica
Pierres des Châteaux Chambord
60x120_24\"x48\"
Nat Ret



ALTRE VARIANTI
More suggestions



Ocher 10x10_4\"x4\"



Prune 5,1x16,1_2\"x6 2/3\"



ABBINAMENTO IN FOTO
Suggested Matching

WALL

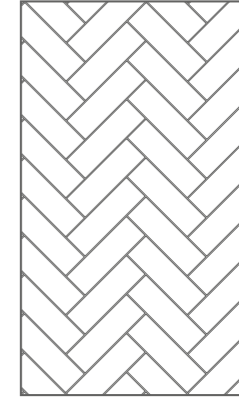


Grey
5,1x16,1_2"x6⅓"



Ocher
5,1x16,1_2"x6⅓"

SCHEMA DI POSA
Laying scheme



ALTRE VARIANTI
More suggestions



Grey, Prune 5,1x16,1_2"x6⅓"



Beige, Emerald 5,1x16,1_2"x6⅓"

ABBINAMENTO IN FOTO
Suggested Matching

WALL



White 6,5x20_2½"x8"
(44%)

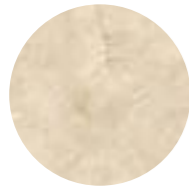


Sage 6,5x20_2½"x8"
(12%)



Emerald 6,5x20_2½"x8"
(44%)

MIXED FLOOR



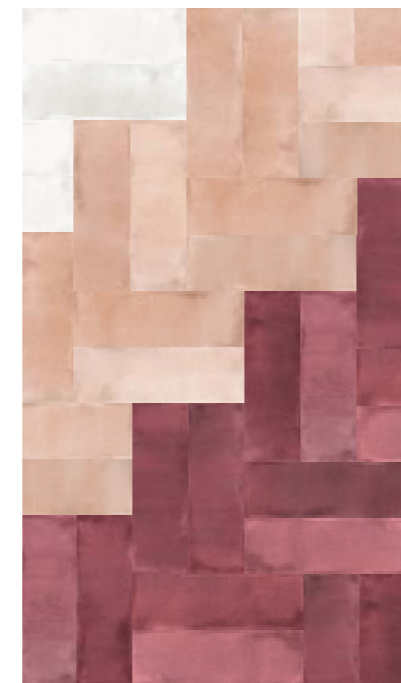
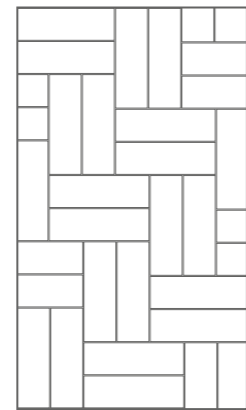
**AVA
Crema Marfil
120x120_48"x48"**
Nat Ret

ALTRE VARIANTI
More suggestions



White, Light Blue, Navy 6,5x20_2½"x8"

SCHEMA DI POSA
Laying scheme



White, Flamingo, Prune 6,5x20_2½"x8"





ABBINAMENTO IN FOTO
Suggested Matching

WALL



Black
5,1x16,1_2"x6⅓"



Sage
5,1x16,1_2"x6⅓"



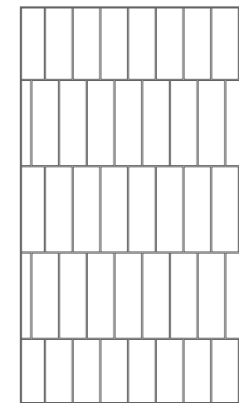
Flamingo
5,1x16,1_2"x6⅓"

MIXED FLOOR



La Fabbrica
Ca' Foscari Canapa
20x120_8"x48"
Nat Ret

SCHEMA DI POSA
Laying scheme



ALTRE VARIANTI
More suggestions



White, Sage, Flamingo
5,1x16,1_2"x6⅓"





ABBINAMENTO IN FOTO
Suggested Matching

SCHEMA DI POSA
Laying scheme

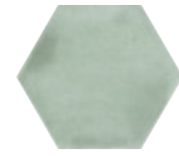
WALL



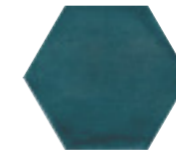
White
12,4x10,7
5"x4¼"



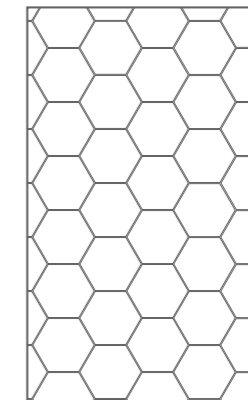
Ocher
12,4x10,7
5"x4¼"



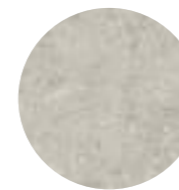
Sage
12,4x10,7
5"x4¼"



Prussian
12,4x10,7
5"x4¼"



MIXED FLOOR



La Fabbrica
Agglomerate Agate
80x80_31 ½"x31 ½"
Nat Ret

ALTRE VARIANTI
More suggestions



White, Ocher, Flamingo, Grey
12,4x10,7_5"x4¼"

ABBINAMENTO IN FOTO
Suggested Matching

WALL



White
5,1x16,1_2"x6⅓"



Black
5,1x16,1_2"x6⅓"



Grey
5,1x16,1_2"x6⅓"



Emerald
5,1x16,1_2"x6⅓"



Sage
5,1x16,1_2"x6⅓"



Light Blue
5,1x16,1_2"x6⅓"



Navy
5,1x16,1_2"x6⅓"



Prune
5,1x16,1_2"x6⅓"



Flamingo
5,1x16,1_2"x6⅓"



Beige
5,1x16,1_2"x6⅓"



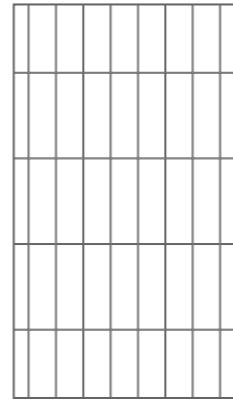
Ocher
5,1x16,1_2"x6⅓"

MIXED FLOOR



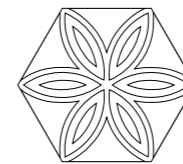
La Fabbrica
Hurban Beige
100x100_40"x40"
Nat Ret

SCHEMA DI POSA
Laying scheme

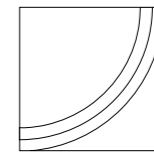




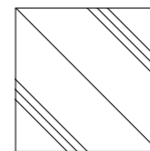
Trend



12,4x10,7
5"x4¼"
Bright



Arco 10x10
4"x4"
Bright



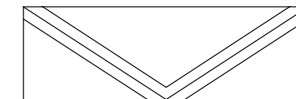
Diagonal 10x10
4"x4"
Bright



5,1x16,1
2"x6⅓"
Bright



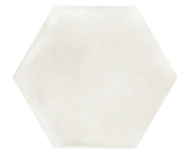
Sun 6,5x20
2½"x8"
Bright



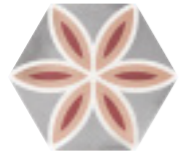
Rhombus 6,5x20
2½"x8"
Bright

ABBINAMENTO IN FOTO
Suggested Matching

WALL



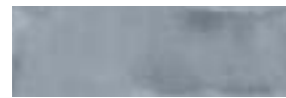
White
12,4x10,7
5"x4¼"



Trend Light Blue
12,4x10,7
5"x4¼"



Prune
6,5x20_2½"x8"



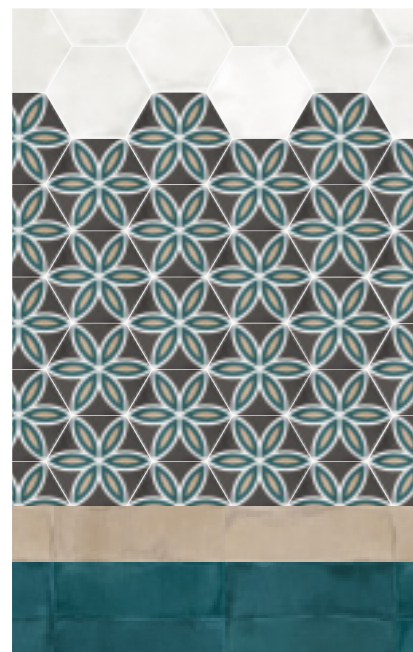
Light Blue
6,5x20_2½"x8"

MIXED FLOOR



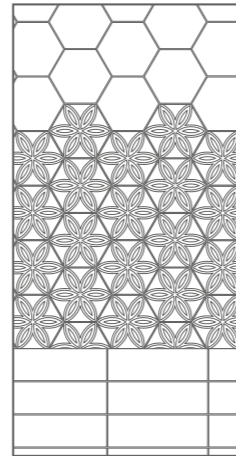
AVA
Statuario
120x120_48"x48"
Lap Ret

ALTRE VARIANTI
More suggestions



Trend Black 12,4x10,7_5"x4¼"
Beige, Prussian 6,5x20_2½"x8"

SCHEMA DI POSA
Laying scheme





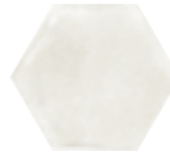
ABBINAMENTO IN FOTO
Suggested Matching

SCHEMA DI POSA
Laying scheme

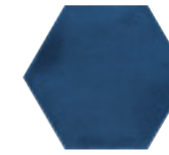
WALL



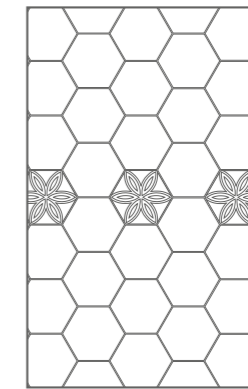
Trend Navy
12,4x10,7
5"x4¼"
(2%)



White
12,4x10,7
5"x4¼"
(21%)



Navy
12,4x10,7
5"x4¼"
(77%)



MIXED FLOOR



La Fabbrica
Il Cerreto Chardonnay
23x149_9"x58 ½"
Nat Ret

ALTRE VARIANTI
More suggestions



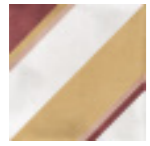
Trend Light Blue 12,4x10,7_5"x4¼"
White, Pink 12,4x10,7_5"x4¼"



Trend Beige 12,4x10,7_5"x4¼"
White, Beige 12,4x10,7_5"x4¼"

ABBINAMENTO IN FOTO
Suggested Matching

WALL



Trend Diagonal Ocher
10x10_4"x4"



White
10x10_4"x4"



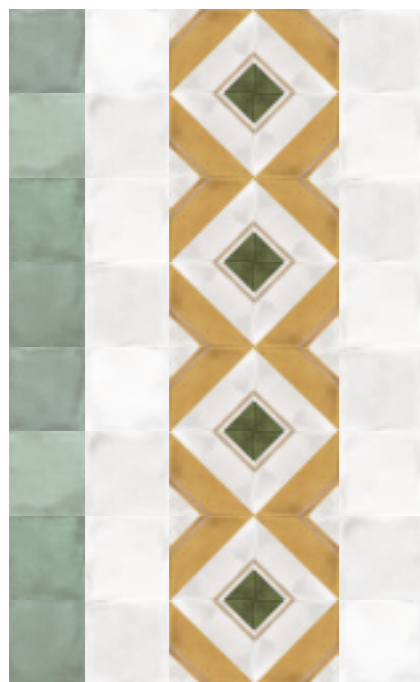
Prune
10x10_4"x4"

MIXED FLOOR



AVA
Skyline Ghiaccio
120x120_48"x48"
Nat Ret

ALTRE VARIANTI
More suggestions

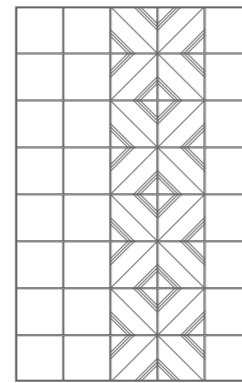


Trend Diagonal Beige 10x10_4"x4"
White, Sage 10x10_4"x4"



Trend Diagonal Light Blue 10x10_4"x4"
White, Light Blue 10x10_4"x4"

SCHEMA DI POSA
Laying scheme

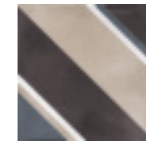




ABBINAMENTO IN FOTO
Suggested Matching

SCHEMA DI POSA
Laying scheme

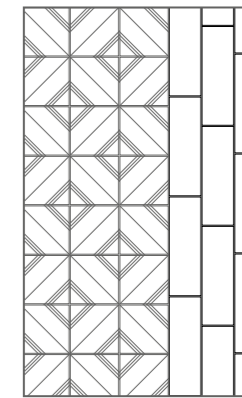
WALL



Trend Diagonal Beige
10x10_4"x4"



Beige
6,5x20_2½"x8"

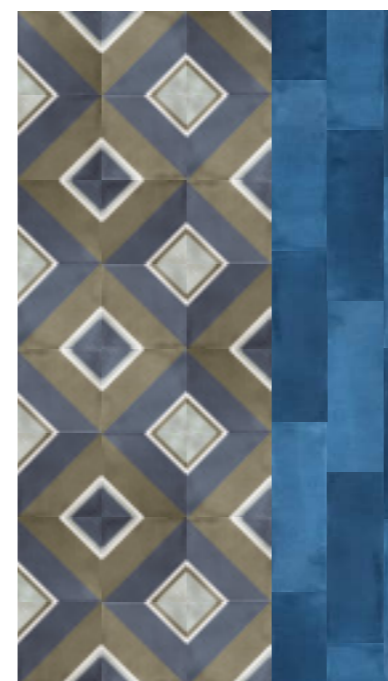


MIXED FLOOR



**La Fabbrica
Hurban Avio**
100x100_40"x40"
Nat Ret

ALTRE VARIANTI
More suggestions



Trend Arco Navy 10x10_4"x4"
Navy 6,5x20_2½"x8"



Trend Arco Navy 10x10_4"x4"
Navy 6,5x20_2½"x8"

ABBINAMENTO IN FOTO
Suggested Matching

WALL



Trend Beige
5,1x16,1_2"x6⅓"



Sage
5,1x16,1_2"x6⅓"



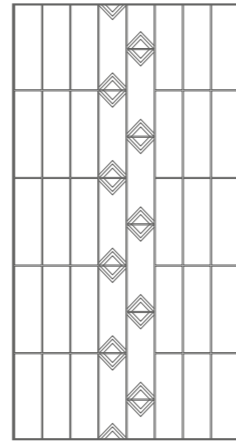
White
5,1x16,1_2"x6⅓"

MIXED FLOOR



**La Fabbrica
Hurban Gray**
100x100_40"x40"
Nat Ret

SCHEMA DI POSA
Laying scheme



ALTRE VARIANTI
More suggestions



Trend Navy 5,1x16,1_2"x6⅓"
White, Navy 5,1x16,1_2"x6⅓"



Trend Black 5,1x16,1_2"x6⅓"
White, Black 5,1x16,1_2"x6⅓"







ABBINAMENTO IN FOTO
Suggested Matching

SCHEMA DI POSA
Laying scheme

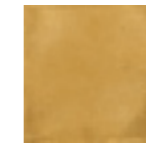
WALL



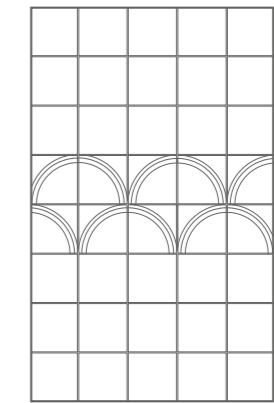
Trend Arco Ocher
10x10_4"x4"



White
10x10_4"x4"



Ocher
10x10_4"x4"

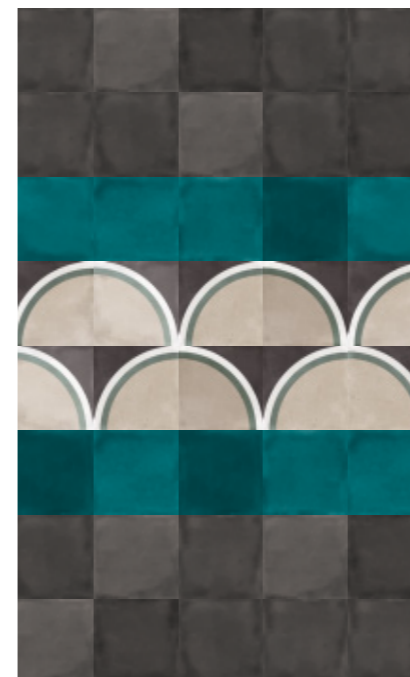


MIXED FLOOR

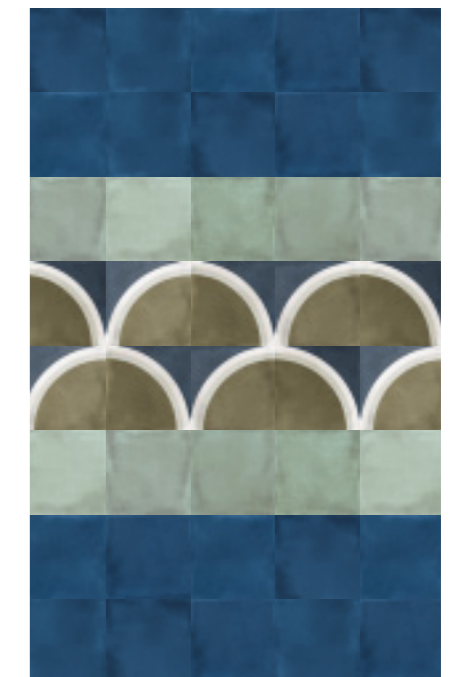


La Fabbrica
Pierres des Châteaux Chambord
100x100_40"x40"
Nat Ret

ALTRE VARIANTI
More suggestions



Trend Arco Black 10x10_4"x4"
Prussian, Black 10x10_4"x4"

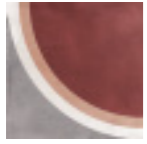


Trend Arco Navy 10x10_4"x4"
Sage, Navy 10x10_4"x4"



ABBINAMENTO IN FOTO
Suggested Matching

WALL



Trend Arco Light Blue
10x10_4"x4"



Prune
10x10_4"x4"

MIXED FLOOR



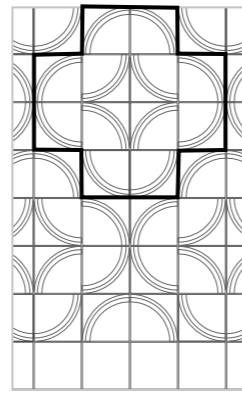
**La Fabbrica
Hurban Gray**
100x100_40"x40"
Nat Ret

ALTRE VARIANTI
More suggestions



Trend Arco Black 10x10_4"x4"
Black 10x10_4"x4"

SCHEMA DI POSA
Laying scheme



x 12



Trend Arco Beige 10x10_4"x4"
Beige 10x10_4"x4"







ABBINAMENTO IN FOTO
Suggested Matching

SCHEMA DI POSA
Laying scheme

WALL



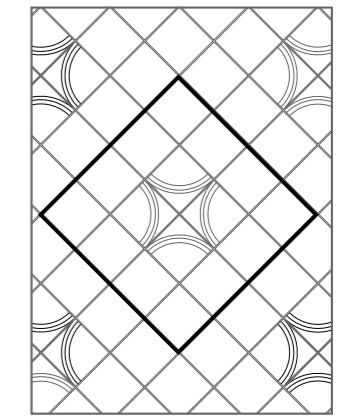
Trend Arco Beige
10x10_4\"x4\"



White
10x10_4\"x4\"



Sage
10x10_4\"x4\"



-  x 4
-  White x 6
-  Sage x 6

MIXED FLOOR



AVA
Lasa
120x240_48\"x96\"
Lap Ret

ALTRE VARIANTI
More suggestions



Trend Arco Light Blue 10x10_4\"x4\"
White, Flamingo 10x10_4\"x4\"



Trend Arco Black 10x10_4\"x4\"
White, Grey 10x10_4\"x4\"

ABBINAMENTO IN FOTO
Suggested Matching

WALL

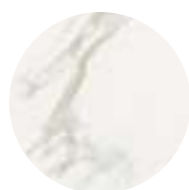


Trend Rhombus Light Blue
6,5x20_2½"x8"



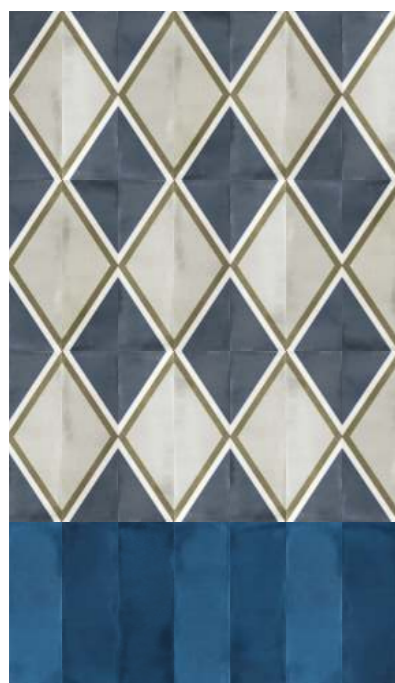
Prune
6,5x20_2½"x8"

MIXED FLOOR



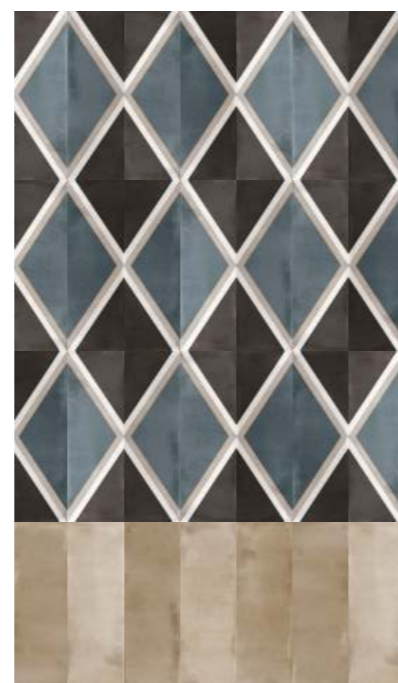
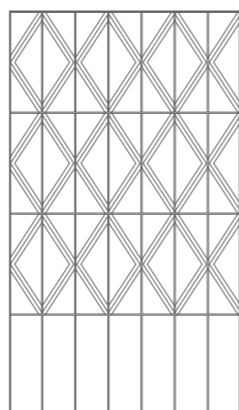
AVA
Calacatta
120x120_48"x48"
Lap Ret

ALTRE VARIANTI
More suggestions



Trend Rhombus Navy 6,5x20_2½"x8"
Navy 6,5x20_2½"x8"

SCHEMA DI POSA
Laying scheme

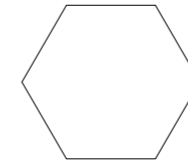


Trend Rhombus Black 6,5x20_2½"x8"
Beige 6,5x20_2½"x8"

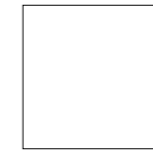




Amalfi



12,4x10,7
5"x4¼"
Bright



10x10
4"x4"
Bright



6,5x20
2½"x8"
Bright



5,1x16,1
2"x6⅓"
Bright

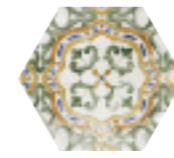




ABBINAMENTO IN FOTO
Suggested Matching

SCHEMA DI POSA
Laying scheme

WALL



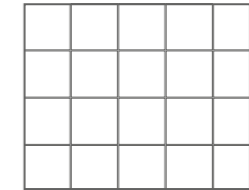
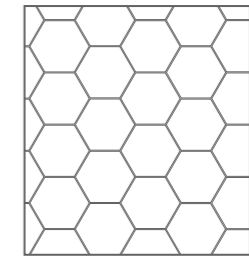
Amalfi
12,4x10,7
5"x4¼"



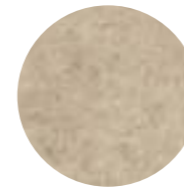
White
12,4x10,7
5"x4¼"



Ocher
10x10_4"x4"

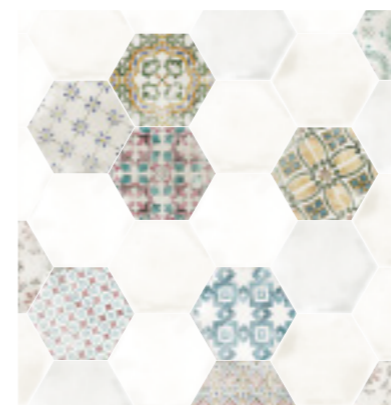


MIXED FLOOR

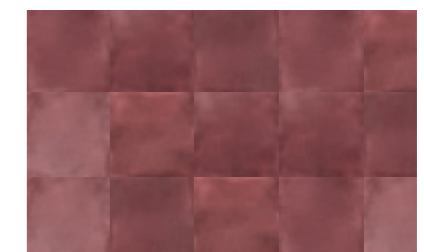


La Fabbrica
Agglomerate Shell
120x120_48"x48"
Nat Ret

ALTRE VARIANTI
More suggestions



Amalfi 12,4x10,7_5"x4¼"
White 12,4x10,7_5"x4¼"
Sage 10x10_4"x4"



Amalfi 12,4x10,7_5"x4¼"
White 12,4x10,7_5"x4¼"
Prune 10x10_4"x4"

ABBINAMENTO IN FOTO
Suggested Matching

WALL



Amalfi
5,1x16,1_2"x6⅓"



White
5,1x16,1_2"x6⅓"



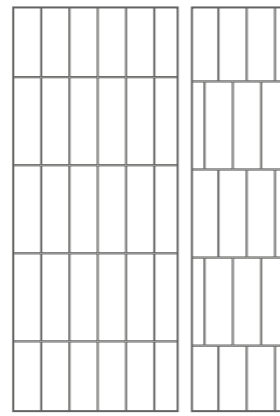
Prussian
5,1x16,1_2"x6⅓"

MIXED FLOOR



La Fabbrica
Pierres des Châteaux Ussé
60x120_24"x48"
Nat Ret

SCHEMA DI POSA
Laying scheme



ALTRE VARIANTI
More suggestions



Amalfi 5,1x16,1_2"x6⅓"
White, Light Blue 5,1x16,1_2"x6⅓"



Amalfi 5,1x16,1_2"x6⅓"
White, Navy 5,1x16,1_2"x6⅓"





ABBINAMENTO IN FOTO
Suggested Matching

SCHEMA DI POSA
Laying scheme

WALL



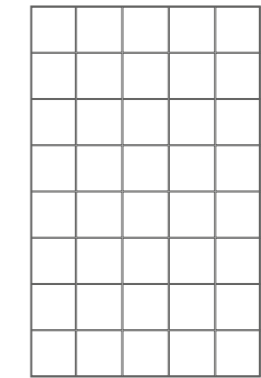
Amalfi
10x10_4"x4"



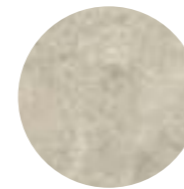
White
10x10_4"x4"



Light Blue
10x10_4"x4"



MIXED FLOOR



La Fabbrica
Cotto del Casale Greige
60,9x60,9_24"x24" - 40,6x40,6_16"x16"
20,3x40,6_8"x16" - 20,3x20,3_8"x8"
Nat

ALTRE VARIANTI
More suggestions



Amalfi 10x10_4"x4"
White, Emerald, Sage 10x10_4"x4"



Amalfi 10x10_4"x4"
White, Prune, Flamingo 10x10_4"x4"



PARTE TECNICA

Technical section. Partie technique. Technischer Teil.

WHITE

9 mm



12,4x10,7
5"x4¼"

180048 Bright



10x10
4"x4"

180068 Bright



6,5x20
2½"x8"

180008 Bright



5,1x16,1
2"x6⅓"

180028 Bright



Jolly 1,2x20
½"x8"

180088 Bright

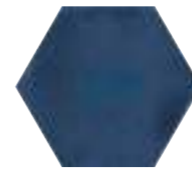


Pencil bullnose 3x20
1¼"x8"

180108 Bright

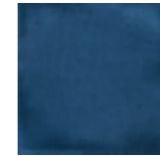
NAVY

9 mm



12,4x10,7
5"x4¼"

180042 Bright



10x10
4"x4"

180062 Bright



6,5x20
2½"x8"

180002 Bright



5,1x16,1
2"x6⅓"

180022 Bright



Jolly 1,2x20
½"x8"

180082 Bright



Pencil bullnose 3x20
1¼"x8"

180102 Bright

BLACK

9 mm



12,4x10,7
5"x4¼"

180041 Bright



10x10
4"x4"

180061 Bright



6,5x20
2½"x8"

180001 Bright



5,1x16,1
2"x6⅓"

180021 Bright



Jolly 1,2x20
½"x8"

180081 Bright

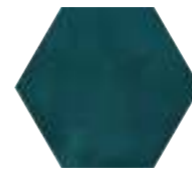


Pencil bullnose 3x20
1¼"x8"

180101 Bright

PRUSSIAN

9 mm



12,4x10,7
5"x4¼"

180043 Bright



10x10
4"x4"

180063 Bright



6,5x20
2½"x8"

180003 Bright



5,1x16,1
2"x6⅓"

180023 Bright



Jolly 1,2x20
½"x8"

180083 Bright

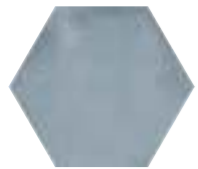


Pencil bullnose 3x20
1¼"x8"

180103 Bright

LIGHT BLUE

9 mm



12,4x10,7
5"x4¼"

180047 Bright



10x10
4"x4"

180067 Bright



6,5x20
2½"x8"

180007 Bright



5,1x16,1
2"x6⅓"

180027 Bright



Jolly 1,2x20
½"x8"

180087 Bright

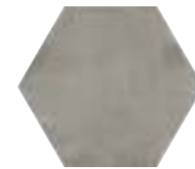


Pencil bullnose 3x20
1¼"x8"

180107 Bright

GREY

9 mm



12,4x10,7
5"x4¼"

180053 Bright



10x10
4"x4"

180073 Bright



6,5x20
2½"x8"

180013 Bright



5,1x16,1
2"x6⅓"

180033 Bright



Jolly 1,2x20
½"x8"

180093 Bright

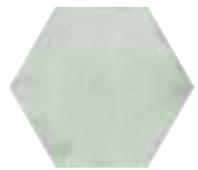


Pencil bullnose 3x20
1¼"x8"

180113 Bright

SAGE

9 mm



12,4x10,7
5"x4¼"

180046 Bright



10x10
4"x4"

180066 Bright



6,5x20
2½"x8"

180006 Bright



5,1x16,1
2"x6⅓"

180026 Bright



Jolly 1,2x20
½"x8"

180086 Bright

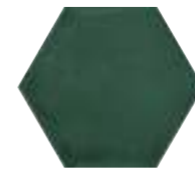


Pencil bullnose 3x20
1¼"x8"

180106 Bright

EMERALD

9 mm



12,4x10,7
5"x4¼"

180044 Bright



10x10
4"x4"

180064 Bright



6,5x20
2½"x8"

180004 Bright



5,1x16,1
2"x6⅓"

180024 Bright



Jolly 1,2x20
½"x8"

180084 Bright



Pencil bullnose 3x20
1¼"x8"

180104 Bright

FLAMINGO

9 mm



12,4x10,7
5"x4¼"

180049 Bright



10x10
4"x4"

180069 Bright



6,5x20
2½"x8"

180009 Bright



5,1x16,1
2"x6⅓"

180029 Bright



Jolly 1,2x20
½"x8"

180089 Bright

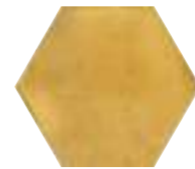


Pencil bullnose 3x20
1¼"x8"

180109 Bright

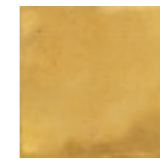
OCHER

9 mm



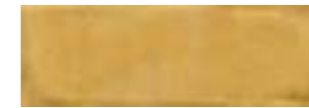
12,4x10,7
5"x4¼"

180051 Bright



10x10
4"x4"

180071 Bright



6,5x20
2½"x8"

180011 Bright



5,1x16,1
2"x6⅓"

180031 Bright



Jolly 1,2x20
½"x8"

180091 Bright



Pencil bullnose 3x20
1¼"x8"

180111 Bright

BEIGE

9 mm



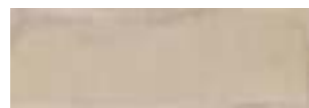
12,4x10,7
5"x4¼"

180050 Bright



10x10
4"x4"

180070 Bright



6,5x20
2½"x8"

180010 Bright



5,1x16,1
2"x6⅓"

180030 Bright



Jolly 1,2x20
½"x8"

180090 Bright

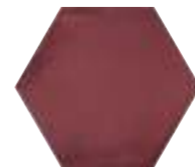


Pencil bullnose 3x20
1¼"x8"

180110 Bright

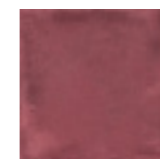
PRUNE

9 mm



12,4x10,7
5"x4¼"

180052 Bright



10x10
4"x4"

180072 Bright



6,5x20
2½"x8"

180012 Bright



5,1x16,1
2"x6⅓"

180032 Bright



Jolly 1,2x20
½"x8"

180092 Bright



Pencil bullnose 3x20
1¼"x8"

180112 Bright

Beige



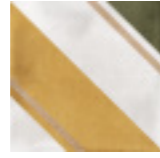
12,4x10,7
5"x4¼"

180251 Bright



Arco 10x10
4"x4"

180232 Bright



Diagonal 10x10
4"x4"

180231 Bright



Rhombus 6,5x20
2½"x8"

180212 Bright



Sun 6,5x20
2½"x8"

180201 Bright



5,1x16,1
2"x6⅓"

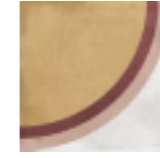
180211 Bright

Ocher



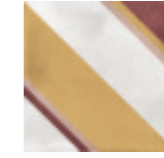
12,4x10,7
5"x4¼"

180253 Bright



Arco 10x10
4"x4"

180236 Bright



Diagonal 10x10
4"x4"

180235 Bright



Rhombus 6,5x20
3"x8"

180216 Bright



Sun 6,5x20
3"x8"

180203 Bright



5,1x16,1
2"x6⅓"

180215 Bright

Black



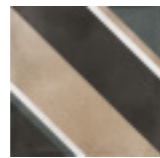
12,4x10,7
5"x4¼"

180252 Bright



Arco 10x10
4"x4"

180234 Bright



Diagonal 10x10
4"x4"

180233 Bright



Rhombus 6,5x20
2½"x8"

180214 Bright



Sun 6,5x20
2½"x8"

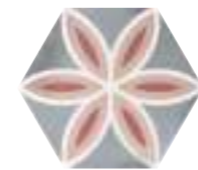
180202 Bright



5,1x16,1
2"x6⅓"

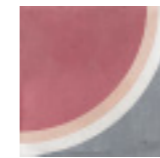
180213 Bright

Light Blue



12,4x10,7
5"x4¼"

180254 Bright



Arco 10x10
4"x4"

180238 Bright



Diagonal 10x10
4"x4"

180237 Bright



Rhombus 6,5x20
2½"x8"

180218 Bright



Sun 6,5x20
2½"x8"

180204 Bright



5,1x16,1
2"x6⅓"

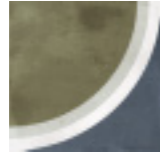
180217 Bright

Navy



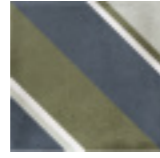
12,4x10,7
5"x4¼"

180255 Bright



Arco 10x10
4"x4"

180240 Bright



Diagonal 10x10
4"x4"

180239 Bright



Rhombus 6,5x20
2½"x8"

180220 Bright



Sun 6,5x20
2½"x8"

180205 Bright



5,1x16,1
2"x6½"

180219 Bright



Wall
Trend Navy Arco 10x10_4"x4" Bright
Sage 10x10_4"x4" Bright



12,4x10,7
5"x4 1/4"

180256 Bright



10x10
4"x4"

180241 Bright



6,5x20
2 1/2"x8"

180206 Bright




Furniture
White, Light Blue 10x10_4"x4" Bright
Amalfi 10x10_4"x4" Bright

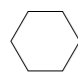


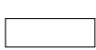

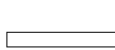


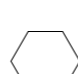


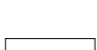
5,1x16,1
2"x6 1/3"

180221 Bright

SMALL

 **Da rivestimento.**
Wall tile. Pour revêtement. Für Wandbelag.

	9 mm					
	 12,4x10,7 5"x4¼"	 10x10 4"x4"	 6,5x20 2½"x8"	 5,1x16,1 2"x6½"	 Jolly 1,2x20 ½"x8"	 Pencil bullnose 3x20 1¼"x8"
	Bright					
WHITE	180048	180068	180008	180028	180088	180108
BLACK	180041	180061	180001	180021	180081	180101
GREY	180053	180073	180013	180033	180093	180113
NAVY	180042	180062	180002	180022	180082	180102
PRUSSIAN	180043	180063	180003	180023	180083	180103
LIGHT BLUE	180047	180067	180007	180027	180087	180107
SAGE	180046	180066	180006	180026	180086	180106
EMERALD	180044	180064	180004	180024	180084	180104
FLAMINGO	180049	180069	180009	180029	180089	180109
BEIGE	180050	180070	180010	180030	180090	180110
OCHER	180051	180071	180011	180031	180091	180111
PRUNE	180052	180072	180012	180032	180092	180112
Price code	M131	M097	M093	M131	P018	P011

	9 mm			
	 12,4x10,7 5"x4¼"	 10x10 4"x4"	 6,5x20 2½"x8"	 5,1x16,1 2"x6½"
	Bright			
AMALFI *	180256	180241	180206	180221
Price code	M141	M109	M105	M141

Le tonalità di Amalfi e Trend sono compatibili con i colori dei fondi a tinta unita.





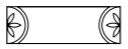
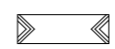
Amalfi and Trend shade could be similar as the plain colour pieces.
Les nuances concernantes Amalfi et Trend sont compatibles avec les fonds.
Die Farbtöne von Amalfi und Trend sind vereinbaren mit die Unifliesen.

Si consiglia di mantenere una fuga di almeno 3 mm.

We recommend you keep at least a 3 mm joint.
On conseille de préserver un joint au moins de 3 mm.
Es wird geraten, eine Fuge von mindestens 3 mm.

*** In ogni scatola la combinazione dei soggetti è del tutto casuale. Lo stesso soggetto potrebbe essere ripetuto oppure potrebbe non essere presente nella scatola.**

Each box contains a random assortment of the designs available. The same design may be repeated and certain designs may not be included in the box.
La combinaison des motifs à l'intérieur de chaque boîte est absolument fortuite. Le même motif pourrait être répété ou ne pas se trouver à l'intérieur de la boîte.
Die Zusammenstellung der Motive ist in jedem Karton vollkommen zufällig. Das selbe Motiv könnte sich wiederholen oder nicht im Karton vorhanden sein.

	9 mm					
	 12,4x10,7 5"x4¼"	 Arco 10x10 4"x4"	 Diagonal 10x10 4"x4"	 Rhombus 6,5x20 2½"x8"	 Sun 6,5x20 2½"x8"	 5,1x16,1 2"x6½"
	Bright					
TREND BEIGE	180251	180232	180231	180212	180201	180211
TREND BLACK	180252	180234	180233	180214	180202	180213
TREND OCHER	180253	180236	180235	180216	180203	180215
TREND LIGHT BLUE	180254	180238	180237	180218	180204	180217
TREND NAVY	180255	180240	180239	180220	180205	180219
Price code	M141	M109	M109	M105	M105	M141

IMBALLI Packings. Emballage. Verpackung

	PCS/BOX	MQ/BOX	KG/BOX	BOX/PAL	MQ/PAL	KG/PAL	PACKING	PACKING SIZE
9 mm								
12,4 x 10,7	50	0,50	7,68	84	42	665	EPAL	80 x 120
10 x 10	50	0,50	7,23	120	60	887	EPAL	80 x 120
6,5 x 20	38	0,50	7,75	120	60	950	EPAL	80 x 120
5,1 x 16,1	66	0,54	7,95	120	64,80	974	EPAL	80 x 120
JOLLY 1,2 x 20	66	0,16	2,64	-	-	-	EPAL	80 x 120
PENCIL BULLNOSE 3 x 20	15	0,09	1,73	-	-	-	EPAL	80 x 120











CARATTERISTICHE TECNICHE

Technical features.
Caracteristiques techniques.
Technische eigenschaften.

PASTA BIANCA - RIVESTIMENTO

White body - wall tiles
Pâte blanche - pour revêtement
Weißscherbügel - Für wandbelag

UNI EN 14411 - ISO 13006 B III - GL -

	CARATTERISTICA SPECIFICATION CARACTERISTIQUE EIGENSCHAFT	METODO DI PROVA TEST METHODS METHODE D'ESSAI TESTVERFAHREN	VALORE PRESCRITTO FIXED VALUE VALEUR PRESCRITE VORGESCHRIEBENER WERT	UNITÀ DI MISURA UNIT OF MEASUREMENT UNITÉ DE MESURE MASSEINHEIT	 Civilization of Beauty
	DIMENSIONE LATI DIMENSIONS - LENGHT AND WIDTH DIMENSIONS - LONGUEUR ET LARGEUR LÄNGE UND BREITE	UNI EN ISO 10545-2	± 0,5	%	
	RETTILINEITÀ DEI LATI SIDES' STRAIGHTNESS RECTITUDE DES CÔTES GERADLINIGKEIT DER KANTEN		± 0,3	%	
	ORTAGONALITÀ DEI LATI SIDES' ORTOGONALITY OCTOGONALITÉ DES CÔTES RECHTWINKLIGKEIT DER KANTEN		± 0,5	%	
	PLANARITÀ FLATNESS PLANEITUDE EBENFLÄCHIGKEIT		± 0,5	%	
	SPESSORE THICKNESS ÉPAISSEUR STÄRKE		± 10	%	
	ASSORBIMENTO D'ACQUA WATER ABSORPTION ABSORTION D'EAU WASSERAUFNAHME	UNI EN ISO 10545-3	> 10	%	CONFORME . COMPLIANT CONFORME . ERFÜLLT
	SFORZO DI ROTTURA MODULUS OF RUPTURE CHARGE DE RUPTURE BRUCHLAST	UNI EN ISO 10545-4	≥ 600 SE SPESS ≥ 7,5 MM. ≥ 200 SE SPESS < 7,5 MM.	N	CONFORME . COMPLIANT CONFORME . ERFÜLLT
	MODULO DI ROTTURA MODULUS OF ROPTURE COEFFICIENT DE ROPTURE BRUCHMODUL		≥ 15 SE SPESS < 7,5 mm. ≥ 12 SE SPESS ≥ 7,5 mm.	N/mm2	CONFORME . COMPLIANT CONFORME . ERFÜLLT
	COEFFICIENTE DI DILATAZIONE TERMICA LINEARE THERMAL EXPANSION COEFFICIENT COEFFICIENT DE DILATATION THERMIQUE LINEAIRE WARMEAUSSDEHNUNGSKOEFFIZIENT	UNI EN ISO 10545-8	METODO DISPONIBILE AVAILABLE ON REQUEST METHODE DISPONIBLE VERFÜGBARES VERFAHREN	* MK (-1)	7,00
	RESISTENZA AGLI SBALZI TERMICI THERMAL SHOCK RESISTANCE RESISTANCE AUX ECARTS DE TEMPERATURE. TEMPERATURWECHSELBESTÄNDIGKEIT	UNI EN ISO 10545-9	METODO DISPONIBILE AVAILABLE ON REQUEST METHODE DISPONIBLE VERFÜGBARES VERFAHREN		RESISTENTI . RESISTANT RÉSISTANTS . WIDERSTANDSFAHIG
	RESISTENZA AL CAVILLO CRAZING RESISTANT RÉSISTENCE AUX TRÉSSAILLURES HAARRISSE	UNI EN ISO 10545-11	RICHIESTA . ALWAYS TESTED EXIGEE . NOTWENDIG		RESISTENTI . RESISTANT RÉSISTANTS . WIDERSTANDSFAHIG
	RESISTENZA ALLE MACCHIE STAIN RESISTANCE RÉSISTANCE AUX TACHES FLECKBESTÄNDIGKEIT	UNI EN ISO 10545-14	3 MIN		4-5
	RESISTENZA ALL'ATTACCO CHIMICO CHEMICAL RESISTANCE RÉSISTENCE AUX PRODUITS CHIMIQUE BESTÄNDIGZIT GEBIEN CHEMIKALIEN	UNI EN ISO 10545-13	GBMIN		CONFORME . COMPLIANT CONFORME . ERFÜLLT
	RESISTENZA AGLI ACIDI E ALLE BASI A BASSA CONCENTRAZIONE RESISTANT TO ACID AND LOW CONCENTRATION BASES RESISTANCE AUX ACIDES ET AUX BASES À FAIBLE CONCENTRATION WIDERSTANDSFÄHIGKEIT GEGENÜBER NIEDRIG KONZENTRIERTEN SÄUREN UND LAUGEN		METODO DISPONIBILE AVAILABLE ON REQUEST METHODE DISPONIBLE VERFÜGBARES VERFAHREN	≥ GLB	
	RESISTENZA ALL'ABRAZIONE RESISTANCE TO ABRASION RÉSISTENCE À L'ABRASION BESTÄNDIGKEIT GEGEN OBERFLÄCHENVERSCHLEISS	UNI EN ISO 10545-7	CLASSE 1-5 CLASS 1-5 CLASSE 1-5 KLASSE 1-5		2-5

CERTIFICAZIONI DI PRODOTTO

Product certification.
Certification de produit.
Produkt Zertifizierungen.


Ceramics of Italy



CERTIFICAZIONI DI SISTEMA

System certification.
Certifications du système.
Systemzertifikationen.

La Fabbrica SpA



La Fabbrica SpA è una società del Gruppo Italcera che è certificato: ISO14001:2015, ISO9001:2015, ISO5001:2018, ISO45001:2018, EMAS, Good Phytosanitary, Practices.

La Fabbrica S.p.A. si riserva di apportare, senza alcun preavviso, le modifiche che riterrà più opportune al fine di migliorare il prodotto.

Quanto riportato è da considerarsi indicativo e non esaustivo in riferimento ai colori e alle caratteristiche estetiche dei prodotti.

La Fabbrica S.p.A. reserves the right to make any changes it deems fit in order to improve the product, without prior notice.

All images are provided for illustrative purposes only and other colours and aesthetic features are available. La Fabbrica S.p.A. se réserve le droit d'apporter, sans préavis, les modifications qu'elle jugera opportunes afin d'améliorer le produit.

Les informations ci-dessus sont fournies à titre indicatif et elles ne sont pas contraignantes en ce qui concerne les couleurs et les caractéristiques esthétiques des produits.

Die Firma La Fabbrica S.p.A. behält sich vor, ohne jegliche vorherige Ankündigung jene Änderungen vorzunehmen, die sie zur Verbesserung des Produktes für angebracht hält.

Die Angaben sind bezüglich der Farben und ästhetischen Eigenschaften der Produkte als Richtwerte und nicht als vollständig anzusehen.

Le cromie, le strutture e le grafiche delle piastrelle riprodotte nelle immagini del catalogo potrebbero non corrispondere fedelmente al prodotto industriale.

The colours, structures, and patterns of the tiles illustrated in the catalogue might not correspond exactly to the actual product.

Les tonalités, les structures et les graphismes des carreaux reproduits sur les images du catalogue pourraient ne pas correspondre fidèlement au produit industriel.

Es ist möglich, dass die im Katalog abgebildeten Fliesen in Bezug auf Farbton, Struktur und Grafik vom Industrieerzeugnis abweichen.

CONSULTA IL SITO WWW.LAFABBRICA.IT PER VEDERE GLI ULTIMI AGGIORNAMENTI.

CHECK OUT OUR WEBSITE AT WWW.LAFABBRICA.IT FOR THE LATEST UPDATES.

CONSULTEZ LE SITE WWW.LAFABBRICA.IT POUR CONNAÎTRE LES DERNIÈRES MISES À JOUR.

AUF DER WEBSITE WWW.LAFABBRICA.IT FINDEN SIE DIE NEUESTEN INFORMATIONEN.

AD: **MARKETING LA FABBRICA**

PRINT: **bBold s.r.l.**

EDIZIONE I - SETTEMBRE 2022

POSA, STUCCATURA, PULIZIA

Laying, grouting, cleaning.
Pose, masticage, nettoyage.
Verlegung, Verspachtelung, Reinigung.

Prima di iniziare le operazioni di posa è necessario assicurarsi che la superficie di appoggio sia sufficientemente stagionata, planare e ben pulita.

L'utilizzo di un adesivo appropriato è fondamentale per una corretta posa. Si consiglia un adesivo cementizio migliorato resistente allo scivolamento a tempo aperto allungato (classe C2TE - EN 12004). Applicare l'adesivo sul supporto mediante opportuna spatola dentata, esercitare una idonea pressione sulle piastrelle per assicurare la bagnatura di almeno l'80% della superficie totale. È importante utilizzare uno stucco appropriato, per ambienti umidi tipo bagni, docce, ecc. si consigliano malte cementizie per fughe migliorate con assorbimento di acqua ridotto (classe CG2 W – EN 13888) ottenute con aggiunta di opportuno additivo liquido.

Per una corretta ed agevole eliminazione degli eccessi di stucco cementizio si consiglia di pulire (normalmente dopo 20 – 30 minuti) con una spugna di cellulosa dura con movimenti diagonali rispetto alle fughe tra una piastrella e l'altra.

Dopo alcuni giorni eliminare i residui di cantiere con una spugna utilizzando un detergente neutro diluito in acqua calda.

Evitare l'utilizzo di prodotti acidi, alcalini, ceranti e/o impregnanti, limitando al massimo l'uso di mezzi leggermente abrasivi ed evitando l'utilizzo di mezzi fortemente abrasivi (es. pagliette di metallo, spugnette di ferro o acciaio).

Before starting the laying operations make sure that the support surface has set and that it is sufficiently flat and perfectly clean.

The use of the appropriate adhesive is fundamental for correct laying operations. We recommend the use of non-slip improved cement adhesive with longer open time (class C2TE - EN 12004). Apply the adhesive to the support using a suitable toothed trowel; apply suitable pressure on the tiles to make sure that at least 80% of the total surface is covered. It is important to use appropriate grout, for damp areas such as bathrooms, showers, etc.; we recommend improved cement mortars for joints with reduced water absorption (class CG2 W – EN 13888) obtained by adding the appropriate liquid additive.

For a correct and easy elimination of excess cement grout we recommend cleaning (normally after 20 – 30 minutes) with a hard cellulose sponge with diagonal movements compared to the joints between the tiles.

After a few days eliminate the site residues with a sponge using neutral detergent diluted in hot water. Avoid the use of acids, alkaline products, waxes and/or primers, limiting the use as much as possible of slightly abrasive means and avoiding the use of highly abrasive means (e.g. scouring pads, iron or steel sponges).

Avant de commencer les opérations de pose, il est nécessaire de s'assurer que la surface d'appui est suffisamment sèche, plane et propre.

L'utilisation d'une colle appropriée est fondamentale pour une pose correcte. Il est recommandé d'utiliser une colle à base de ciment amélioré résistant au glissement, à temps ouvert prolongé (classe C2TE - EN 12004). Appliquer la colle sur le support au moyen d'une spatule dentée, exercer une pression appropriée sur les carreaux pour assurer un mouillage d'au moins 80% de la surface totale. Il est important d'utiliser un mastic approprié ; pour les milieux humides comme les salles de bains, les douches, etc., on recommande les mortiers de ciment pour joints améliorés avec une absorption d'eau réduite (classe CG2 W – EN 13888) obtenus avec l'ajout d'un additif liquide opportun.

Pour une élimination correcte et aisée des excès de joint à base de ciment, on conseille de nettoyer (normalement au bout de 20 - 30 minutes) avec une éponge de cellulose dure, en décrivant des mouvements diagonaux par rapport aux joints entre deux carreaux.

Au bout de quelques jours, éliminer les résidus de chantier avec une éponge en utilisant un détergent neutre dilué dans de l'eau chaude.

Eviter d'utiliser des produits acides, alcalins, des cires et/ou des imprégnants, en limitant au maximum l'utilisation d'outils légèrement abrasifs et en évitant d'utiliser des moyens fortement abrasifs (ex. paillettes de métal, éponges en fer ou en acier).

Vor der Verlegung ist es notwendig zu prüfen, ob die Aulageläche ausreichend ausgereift, eben und sauber ist.

Die Verwendung eines geeigneten Klebstoffes ist für die richtige Verlegung von grundlegender Wichtigkeit. Es wird ein verbesserter, rutschfester Zementklebstoff mit verlängerter Offenzeit empfohlen (Klasse C2TE - EN 12004).

Tragen Sie den Klebstoff auf den Untergrund mit einem geeigneten Zahnpachtel auf, üben Sie dabei einen angemessenen Druck auf die Fliesen aus, um die Benetzung zu mindestens 80% der Gesamtläche abzusichern. Für Feuchträume, wie Badezimmer, Duschen, usw., ist es wichtig, eine geeignete Spachtelmasse zu verwenden. Dabei wird zu verbesserten Zementmörteln für Fugen mit reduzierter Wasserabsorption (Klasse CG2 W - EN 13888) geraten, die unter Hinzufügung eines geeigneten lüssigen Zusatzes hergestellt werden.

Zur richtigen und mühelosen Beseitigung überschüssiger Zementspachtelmasse wird geraten, die Reinigung (normalerweise nach 20 - 30 Minuten) mit einem Schwamm aus Hartzellulose in diagonal zu den Fugen zwischen den einzelnen Fliesen verlaufenden Bewegungen vorzunehmen.

Beseitigen Sie die Baustellenreste mit einem Schwamm unter Verwendung eines neutralen, in warmem Wasser verdünnten Reinigungsmittels.

Vermeiden Sie den Einsatz saurer, alkalischer, wachshaltiger und / oder imprägnierender Produkte, beschränken Sie die Verwendung geringfügig scheuernder Mittel und vermeiden Sie den stark scheuernder (z.B. Schaber oder Schwämme aus Metall bzw. Stahl).



Civilization of Beauty



La Fabbrica S.p.A.
Via Emilia Ponente, 2070
48014 Castel Bolognese (RA) Italy
Tel. +39 0546 - 659911 - Fax +39 0546 - 656223
www.lafabbrica.it - www.avaceramica.it
info@lafabbrica.it

A company part of



FOLLOW US

