



The Corporation of
Massey Hall & Roy Thomson Hall

TECHNICAL INFORMATION

MASSEY HALL
178 Victoria Street
Toronto, Ontario
M5B 1T7

Tel: (416) 363-7624
Fax: (416) 363-5290

Contact.....	pg. 2
Stage Information.....	pg. 2
Loading Area.....	pg. 2
Parking Restrictions.....	pg. 3
Truck Loading	
Directions.....	pg. 3
Lighting and Electrical.....	pg. 4
Sound System and Communications.....	pg. 5
House Audio Console.....	pg. 6
Rigging.....	pg. 6
Staging.....	pg. 6
Unions.....	pg. 7
Backstage	pg. 8



**The Corporation of
Massey Hall & Roy Thomson Hall**

CONTACT

178 Victoria Street
Toronto, Ontario
M5B 1T7
T: 416.363.7624
F: 416.363.5290

Doug McKendrick
Production Manager
Doug.mckendrick@rth-mh.com
416.593.6985

Megan Paquette
Production Coordinator
megan.paquette@rth-mh.com
416.593.0904

Alex Naylor
Production Coordinator
alex.naylor@rth-mh.com
416.593.1189

STAGE INFORMATION

Built in 1894, Massey Hall is a classical, fixed plaster-shell, concert hall. The stage has no masking and is without any wing spaces. There is no proscenium. The entrance to the stage is via upstage left and upstage right swinging doors. The stage floor surface is clear, polyurethane-coated hardwood strip. No drilling or screwing into stage floor is permitted. There are other production limitations inherent to the structure. Please call for details.

Due to building regulations, the use of open flame or pyrotechnics is forbidden.

Stage Dimensions

60 feet wide upstage
65 feet wide downstage between stairs to audience
35 feet deep at center
27 feet deep onstage of stairs to audience
58 feet height clearance

LOADING AREA

There is no loading dock. Loading is at street level at the front of the building off of Shuter Street (see below for detailed map and directions). Push through the front doors, up ramps through two more sets of doors to the auditorium level, then a final ramp up to the stage. The smallest door is the middle door at 50 inches wide by 87 inches high. Stage level is approximately 3 foot, 6 inches above auditorium floor. Ramps are provided for lobby steps and up to stage level. There is very little storage space for empty production cases and the like.



PARKING RESTRICTIONS

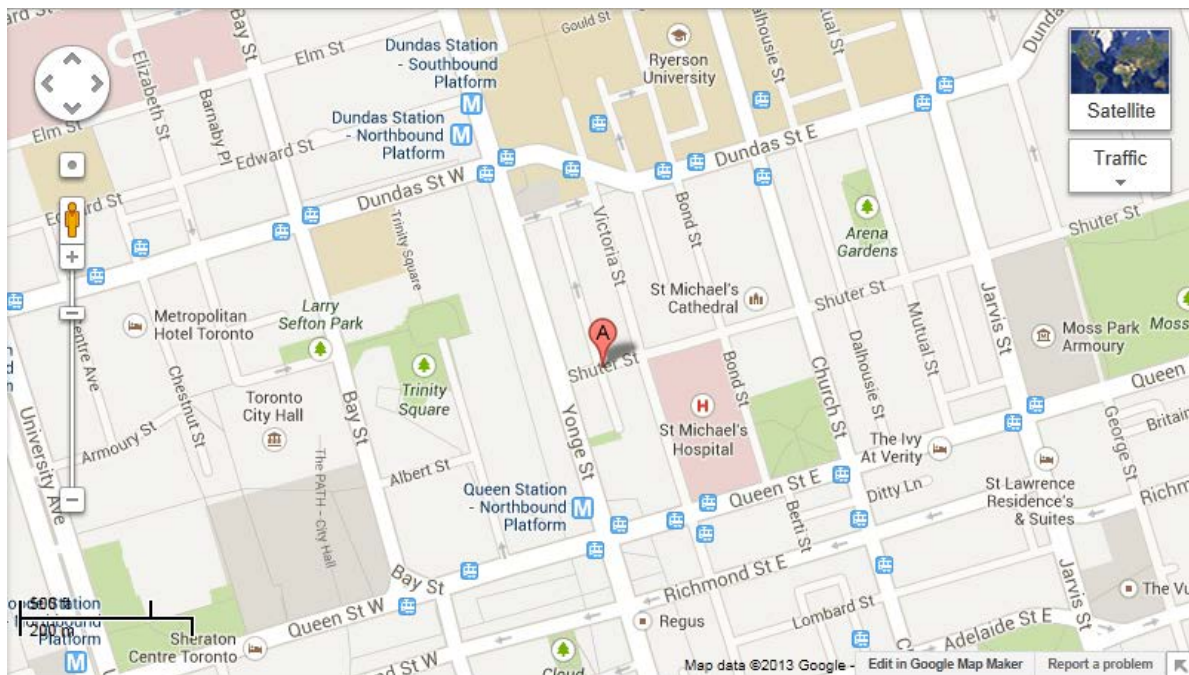
Downtown parking is extremely limited and there are **NO designated parking spaces** at Massey Hall. Off-site parking for busses and trucks can be arranged. Contact production management for further information.

TRUCK LOADING DIRECTIONS

Please ensure all truck drivers have the correct directions to the LOAD IN/OUT address for Massey Hall : 15 SHUTER ST, TORONTO ON

All trucks arriving at Massey Hall to unload or load equipment must be parked on the **south side of Shuter St FACING EAST** in front of the main doors leading in to Massey Hall. The nose of the truck may need to be as close to the intersection of Shuter and Victoria as possible. We understand the challenges of driving a large truck in downtown Toronto so it is for everyone's benefit to know and follow these directions. **Any trucks parked in front of the venue facing west will be required to drive around the block to turn around.**

From the Gardner Expressway: Take the Yonge St exit and head north on Yonge. Shuter St is one (1) street north of Queen St. Take a right on to Shuter, the venue will be on the right.





LIGHTING AND ELECTRICAL

Power Source

Location.....Downstage Right
Capacity.....2 x 400 AMPS
Phase.....3
Voltage.....120/208
Cycles.....60

Fixtures

36 ETC Source 4 @ 575 watts on gallery rail, accessed in lighting electrical disconnect booth.

Connectors

Disconnects: “J” series CAM-LOK. Ground & neutral are reversed.
Fixtures: 125 volt, 20 amp Twistlock
Circuits: 6 X 19 pin female Socapex, 12 Ga.

Lighting Console

House Lighting Console is a Strand MX located in the lighting control booth, stage left. Booth has a limited view of the stage through booth window.

Touring Consoles

Touring lighting consoles are typically located at the back of the auditorium house centre-left, behind the sound position

Touring console position varies from show to show from *row N to T*.

Control cable length from dimmers stage right to console is 150 feet.

Lighting Positions

There are no permanent on-stage lighting positions. Rigging points with permanent chain motors are available for trussing (see rigging). Orchestra concert lighting is via 54 x 1K WFL Par lamps in ceiling. A basic FOH wash is obtainable from 36 ETC Source 4 @ 575 watts on the gallery rail.



Followspots

4 total: 4 X 1.2KW Lycian Superstars w/ 6-colour boomerangs (one of each in spot booths house left and right), 80' throw.

SOUND SYSTEM AND COMMUNICATIONS

Audio Power

Location.....Downstage Left
Capacity.....200 AMPS
Phase.....3
Voltage.....120/208
Cycles.....60
Connectors.....”J” series CAM-LOK, ground & neutral reversed Isolated Ground

House Sound System

37 Box D&B J System with 14 Subs and fills deployed as follows.

L/R Array

8 x J8 flown per side
3 x J12 flown per side
6 x V Subs flown per side behind line array

L/R Deck Fill

2 x J12 per side
2 x V Subs per side

Centre Cluster

8 x J8
3 x J12

Gallery Fill

6 x V12 flow in one array in center gallery

Front Fill

8 x Y7 placed evenly across lip of stage

Under Balcony and Proscenium Fills

Various combinations of Y7 and E6 cabinets throughout the venue for under balcony fills and side proscenium fills.



The Corporation of Massey Hall & Roy Thomson Hall

Processing

D&B Array Processing is utilized for Left, Right, and Centre Arrays. All powered by a combination of D30, D10 and D80 amplifiers. Signal distribution is via Opticore and a full digital signal path is utilized from console to speaker. FOH processing and EQ is via 3 Meyer Galileo Callistro 616 processors.

House Audio Console

Soundcraft Vi1 with remote stage rack 64 Inputs 32 Outputs
Can be moved between FOH Mix and Monitor Mix position as required.

Touring Consoles

Touring sound consoles are located at the back of the house adjacent to the lighting position
Touring console position varies show to show from row N to T.

Control cable length from dimmers stage right or patch bay stage left to console is 150 feet.

Communications

ClearCom 2-channel base station in houselight control booth with 8 belt-packs and 10 headsets, located at each stage entrance, at each followspot, and 2 for front-of-house control positions.

RIGGING

Massey Hall is equipped with dead-hang rigging points for lighting and sound requirements on a show-to-show basis (see rigging diagram for details and locations). There is no fly-floor.

STAGING

Stage Drapes

Legs: 2 @ 20' wide x 24' high black velour
Borders: N/A
Backdrop: 1 @ 60' wide x 24' high black velour
Pipe and Drape: 6 sections high black velour 10' high x 10' wide adjustable

Risers

Stock risers: 2 foot, 6 inches wide by 5 foot long tops; 12 of each height from 1 foot to 6 feet high in 1 foot increments (72 risers, total)



Music Stands

25 Music stands
24 Music stand lights
1 Conductor's podium & music stand

Musical Instruments

Rental instruments can be arranged upon request

Piano & Tuning

Arrangements can be made upon request

Orchestra Seats

25 black, steel frame, straight back, cushioned orchestra chairs
6 various styled bass stools

UNIONS

Massey Hall operates within the jurisdiction of the International Alliance of Theatrical Stage Employees & Moving Picture Technicians, Artists and Allied Crafts (IATSE Local 58 & IATSE Local 822).

For further information contact the Production Manager.

Artist Dressing Rooms

Artist Dressing Rooms have been relocated to the lower level along the west side of the building. Three new artist dressing rooms have been created. The new location provides closer access to catering as well as direct access to the stage door. Please see diagrams below.

Production Offices

Production Offices have been relocated to the lower level along the west side of the building. Two new offices have been created. Please see diagrams below.

Catering / Green Room

The Catering room will remain in the same location on the lower level along the West side of the building. This space has been renewed and expanded.



Showers

There are two showers for exclusive use of touring personnel. Both are recently outfitted and located across from Dressing Room 3 on the lower level.

Centuries

Our Centuries Lounge capacity has been reduced from 250 to 170 to accommodate the newly located dressing rooms.

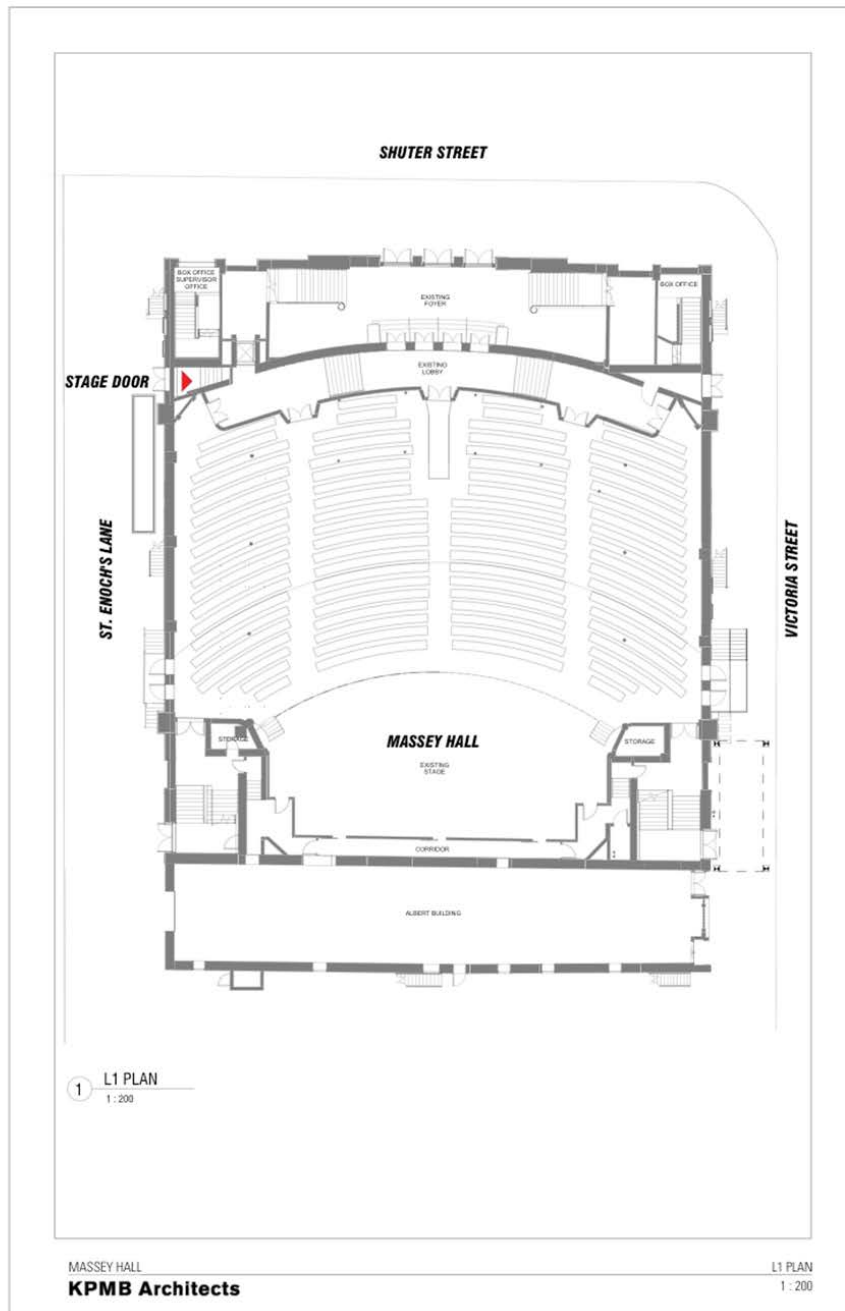
BACKSTAGE

Stage Door

The Stage door location has temporarily changed from 178 Victoria St (South East Entrance) to the North West Corner of the building (St Enoch's Square and Shuter St intersection). Please see diagram below.

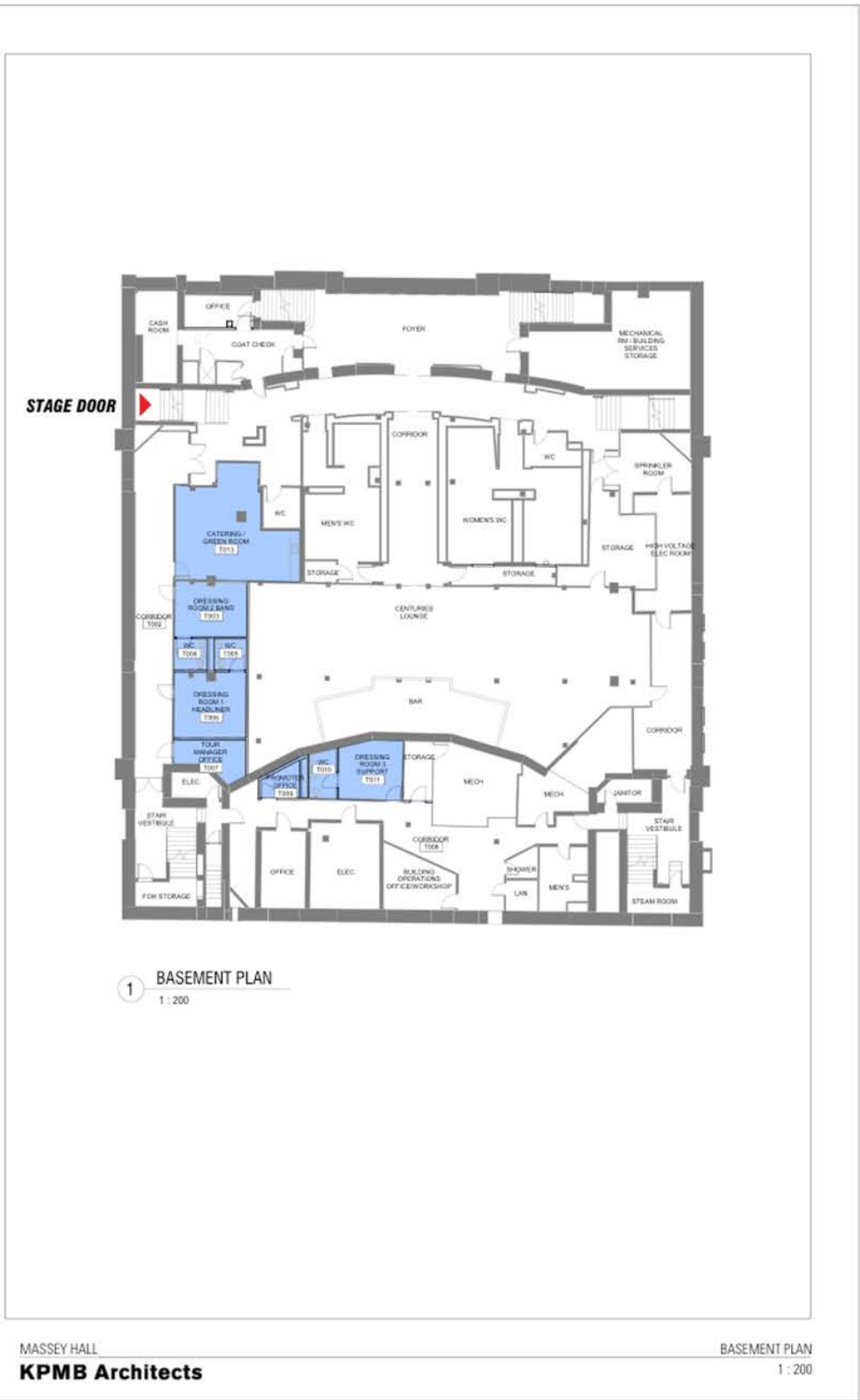


The Corporation of
Massey Hall & Roy Thomson Hall



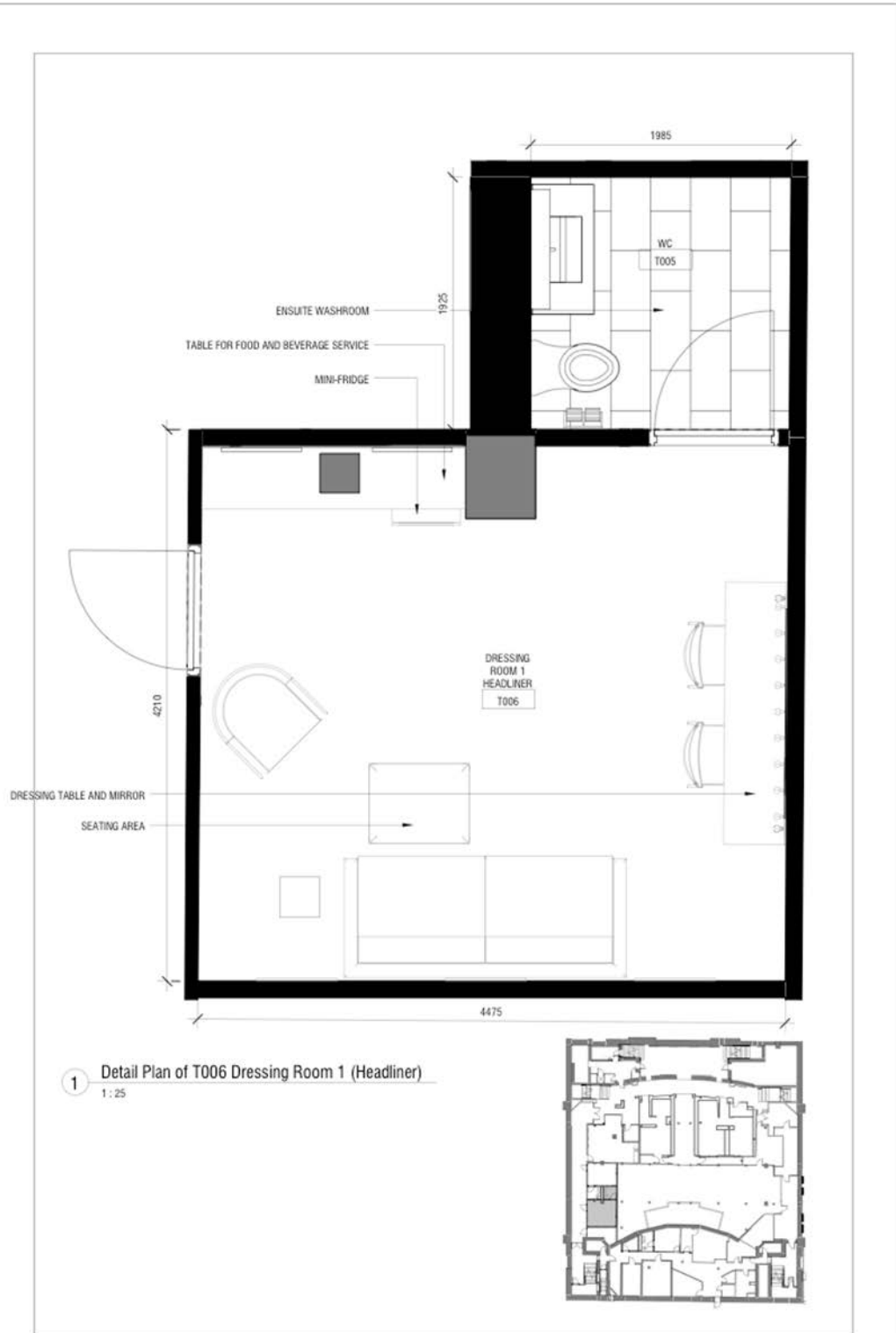


The Corporation of
Massey Hall & Roy Thomson Hall



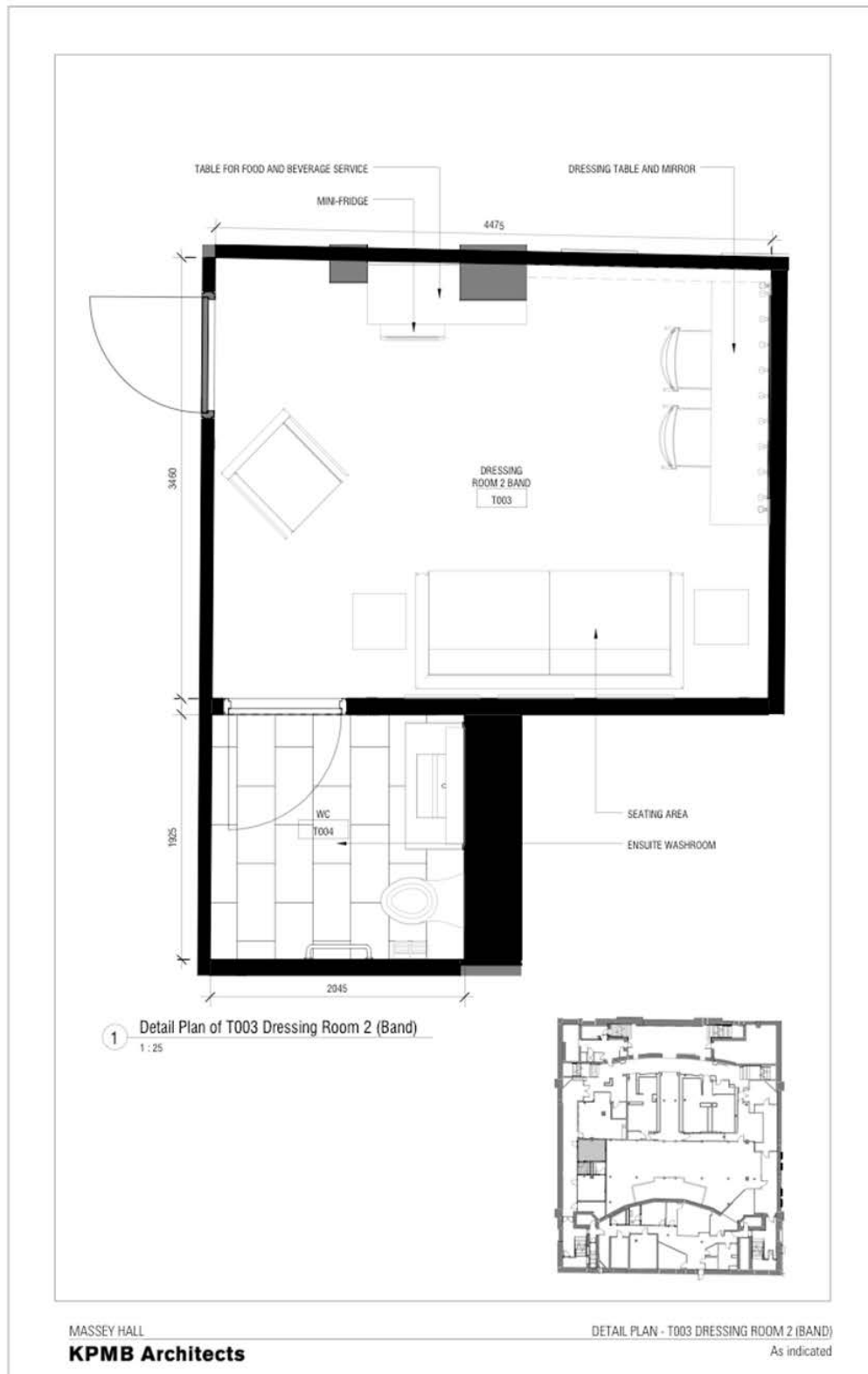


The Corporation of
Massey Hall & Roy Thomson Hall



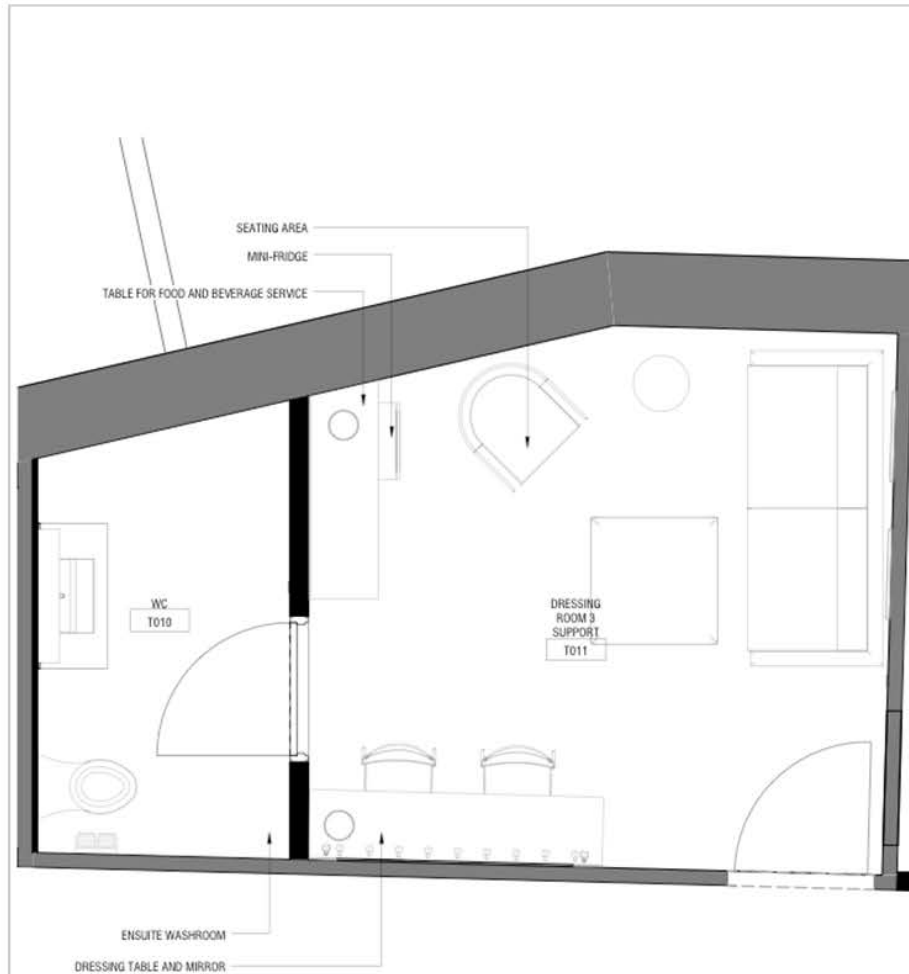


The Corporation of
Massey Hall & Roy Thomson Hall





The Corporation of
Massey Hall & Roy Thomson Hall

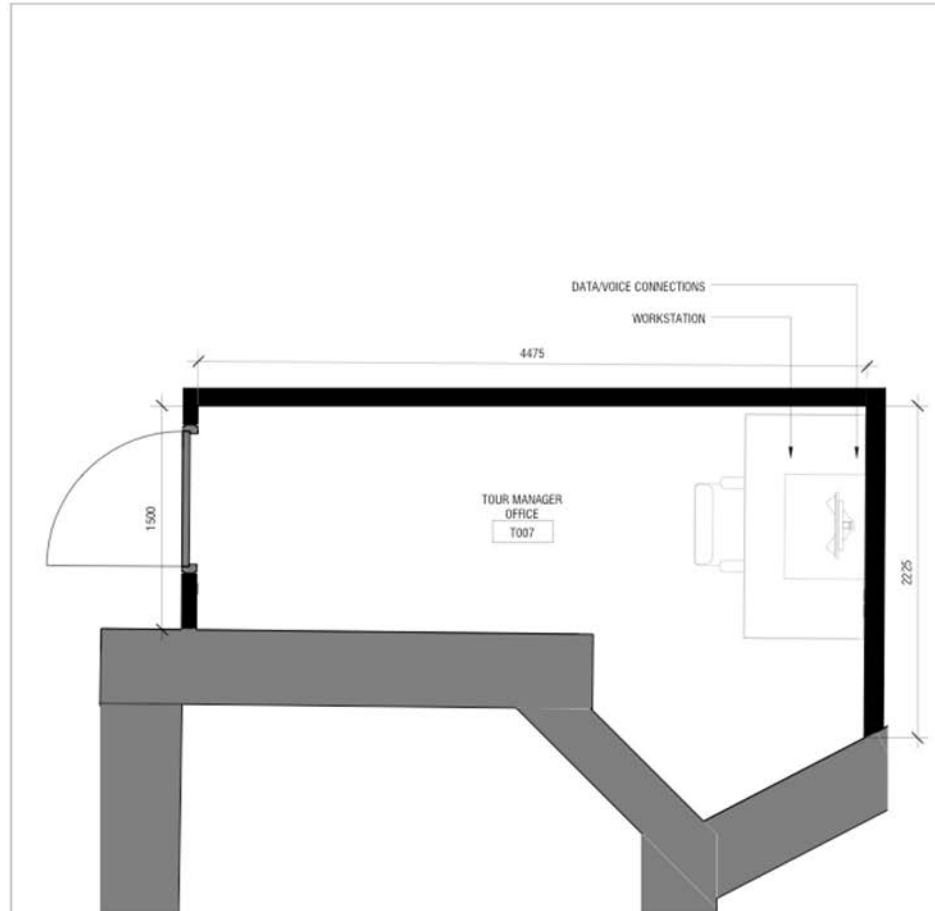


2 Detail Plan of T011 Dressing Room 3 (Supporting Act)
1:25

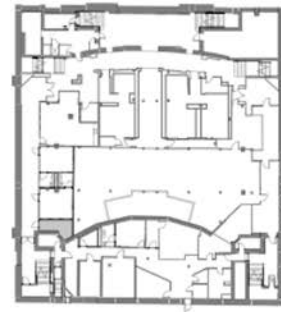


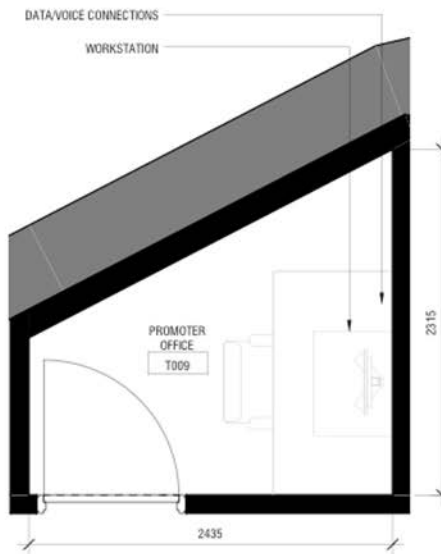


The Corporation of
Massey Hall & Roy Thomson Hall



1 Detail Plan of T007 Tour Manager Office
1:25





1 Detail Plan of T009 Promoter Office
1 : 25

