



ALLIED
MUSIC
CENTRE



MUSIC
HALL

TD MUSIC HALL SALES DECK

Introducing TD Music Hall— Toronto's newest multi- purpose venue located in Allied Music Centre.

This state-of-the-art venue, connected to historic Massey Hall, is the perfect spot for emerging talent, community events, and corporate gatherings. Boasting an immersive audio system, state-of-the-art lighting, rigging, and video systems, TD Music Hall offers endless possibilities for event programming. With integrated audio and video recording capabilities, great performance sightlines, and incredible acoustics, this venue is truly one-of-a-kind. Featuring 34 feet ceiling height, 4000 square feet of designable space, and floor-to-ceiling windows with unique views of Toronto's urban landscape, TD Music Hall is the hottest new event space in the city.

STAGE

The stage is 27 feet wide x 16 feet deep x 4 feet high and is located on the west side of the room. For events that do not require the use of a stage, there is an option to have the stage lowered to become flush with the floor that will increase the footprint of designable floor space. Floor to ceiling windows behind the stage offer a city view that can be used as a unique backdrop, or hidden with a full black velour drape, or sun blinds to allow natural light through.

FEATURES

- Full- service bar
- 8 client-content-programmable monitors throughout venue
- Art exhibits in lobby
- Livestream and Content Capture equipped
- 9 mobile cruiser tables
- Coat check service
- Catering prep & warming kitchen
- Fully accessible
- Universal washroom facilities
- Floor to ceiling window features on East and West side of venue
- Loading dock facilities
- Capacity:
 - Standing: 450
 - Theatre: 245
 - Banquet: 160

Capacities may be affected by event design and space activation

ARTIST DRESSING ROOMS & GREEN ROOM

Conveniently located one floor above TD Music Hall are three Artist Dressing Rooms and one large Green Room. ADR 1 is the largest room and comes with private washroom and shower facilities. ADR 2 & 3 are smaller in size and share washroom and shower facilities. The Green Room is outfitted with custom designed furniture, locally curated art and basic catering facilities. This floor is private and is accessible only to event organizers and staff via elevator or the west stairwell.

PLAN YOUR EVENT

Fully customizable space allowing
you to personalize every detail.

Corporate

- Cocktail Receptions
- Product Launches
- Town Halls
- AGM's
- Holiday Parties

Social

- Milestone Celebrations
- Private Parties
- Community Events
- Concerts

Production

- Film Shoots
- Photo Shoots

FOOD & BEVERAGE

TD Music Hall offers a full complement of bar selections to suit any event, including host bar on consumption, drink tickets, and guest purchase options. TD Music Hall is a cashless venue and bar service includes disposable barware unless glassware rental is arranged in advance of the event. Catering services are provided by TD Music Hall's preferred suppliers, the hall will allow non-preferred caterers, subject to approval, and an increased landmark fee.

[VIEW OUR PREFERRED CATERERS](#)

TECHNICAL SPECS

AUDIO

House PA

- 16 d&b Yi8 Array Speakers
- 4 d&b Yi12 Array Speakers
- 4 d&b ViG Deck Subwoofers (2 stacked per side)
- 4 d&b VISUB Flown Subwoofers (2 per side)
- 8 d&b 8S Front Fill Speakers (100 Degrees Conical)
- 8 d&b 5S Overhead Speakers (100 Degrees Conical)
- 12 d&b 8S Surround Speakers
- 2 d&b Yi10P Deck Fills
- 1 d&b DS100 Signal Engine for d&b Soundscape processing

FOH Console

- Avid S6L-24C
- E6L-112 Engine with MADI-192 Card
- Avid Stage I/O Rack
- 6 AVID SRI-192 Analog Input Cards (48 analog inputs)
- 3 AVID SRO-192 Analog Output Cards (24 analog outputs)
- AVID DSO-192 AES Input Cards (8 digital outputs)
- AVID DSI-192 AES Input Card (8 digital inputs)

Monitors

- 6 d&b M6 monitors
- 1 d&b D20 amplifiers capable of 4 mixes

MICROPHONES AND DI'S

Microphones

- 6 Shure SM58
- 4 Shure SM57
- 4 Shure Beta 58a
- 5 Shure Beta 57a
- 1 Shure Beta 91a
- 1 Shure Beta 52a
- 3 Shure Beta 98AMP/C (clip-on instr. mic)
- 3 Shure SM81
- 2 Sennheiser e609
- 2 AKG 414
- 2 KM184 MT
- 2 Audio-Technica AT-2020

DI's

- 3 Radial PRO 48 Active DI
- 4 Radial PRO D1 Passive DI
- 2 Radial PRO D2 Stereo DI
- 1 Radial JPC Computer DI

LIGHTING

Moving Head Fixtures

- 15 Martin Mac Quantum Profile
- 7 Robe DL7S
- 13 Robe Spider

Lighting Console

- GrandMA3 Compact, running MA3 software

VIDEO AND PROJECTION

Screen

- 25' wide by 15' high retractable screen

Projector

- Christie 16K laser projector mounted over stage
- Fixed .38 lens – fills projection surface

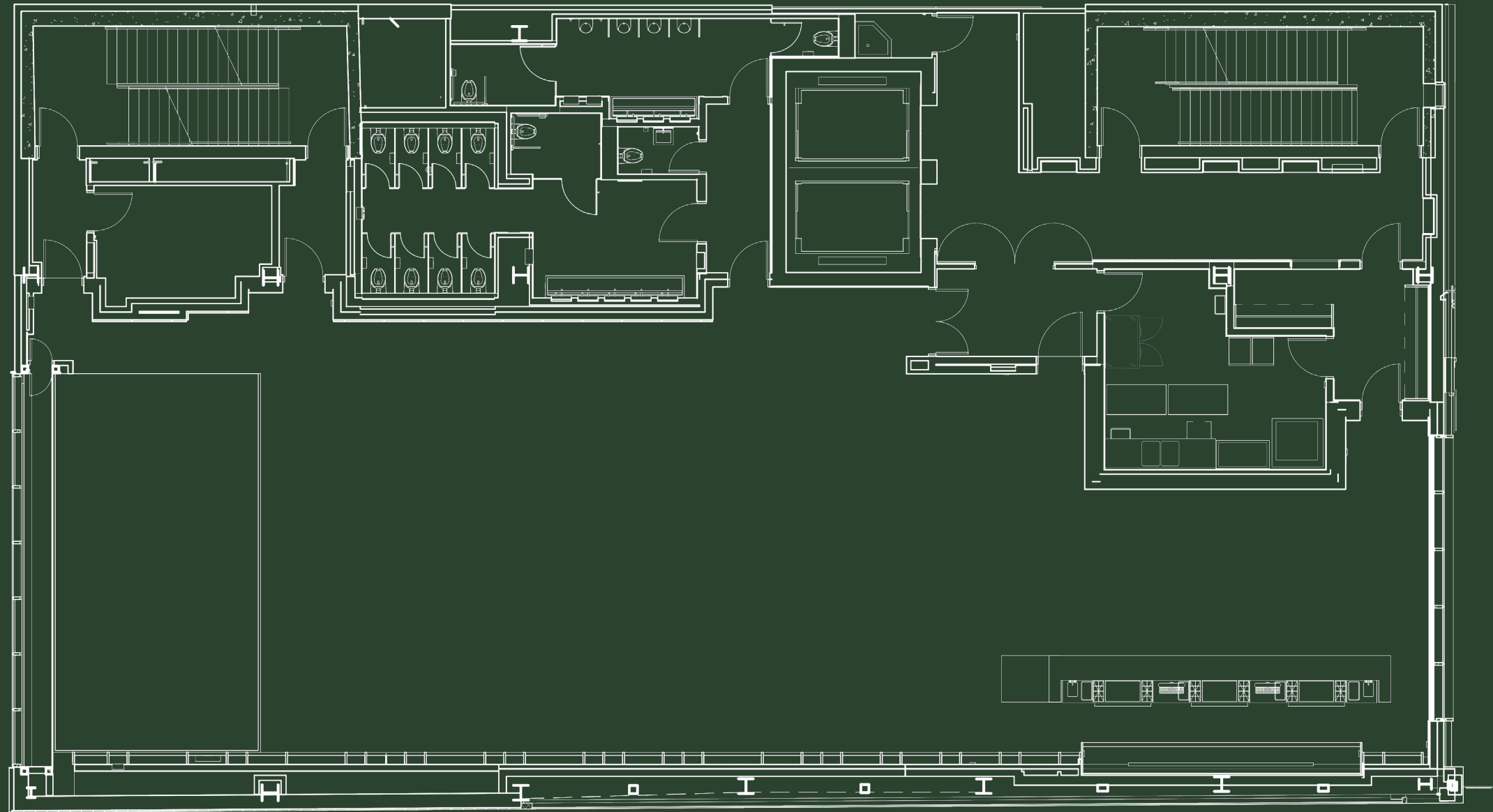
Switcher

- Blackmagic ATEM SDI switcher – 4 SDI Inputs
- Various converters to allow for HDMI inputs

UNION

The Allied Music Centre (and all facilities therein) operates within the jurisdiction of the International Alliance of Theatrical Stage Employees & Moving Picture Technicians, Artists, and Allied Crafts (IATSE Local 58 & IATSE Local 822).

FLOOR PLAN



TELL US MORE

For a timely response to your booking inquiry be sure to include as many of the following details as possible:

- Style of event
- Preferred date(s)
- Number of event attendees
- Estimated start and end time of the event
- Food & Beverage requirements
- Production requirements
- Event budget
- Special requests or considerations

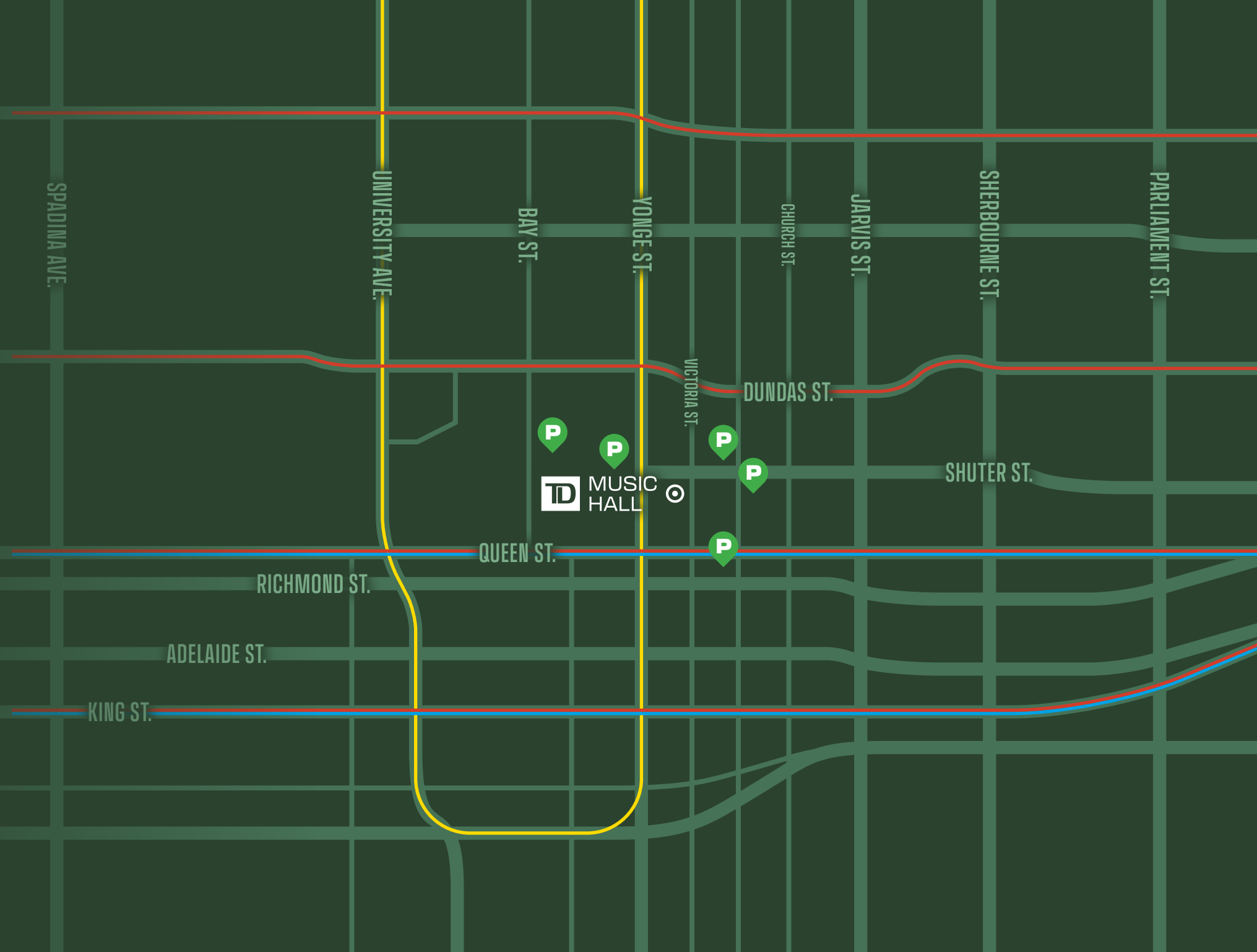
GETTING HERE

TD Music Hall is centrally located in downtown Toronto at 178 Victoria Street. Close to several parking lots and easily accessible by Queen Street or Dundas Street subway and streetcar.

CONTACT US

Email Us at bookings@mh-rth.com or
call us at 416-593-8671

www.tdmusichall.com @tdmusichall



ALLIED
MUSIC CENTRE

MASSEY
HALL

TD MUSIC
HALL

ROY THOMSON
HALL