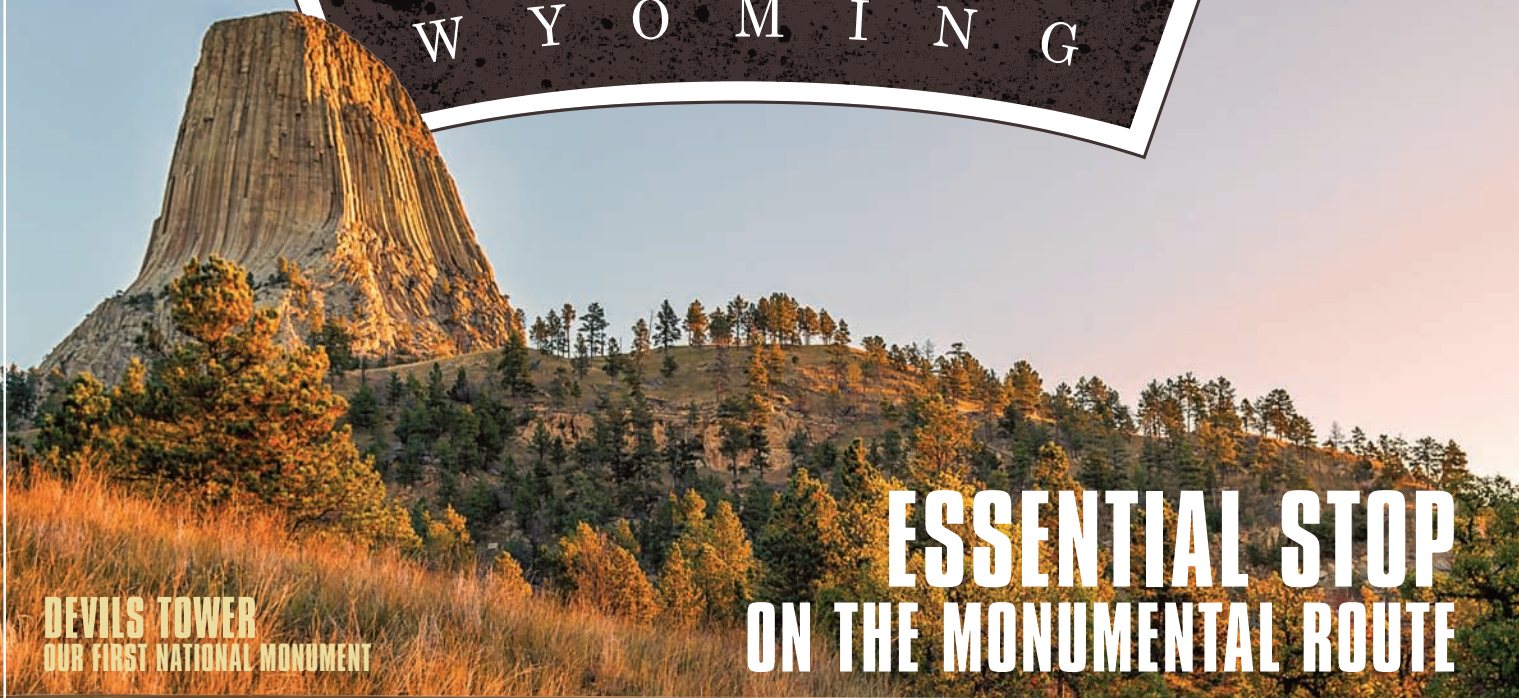


CAMPBELL COUNTY, WY OFFICIAL VISITORS GUIDE

FREE
MAP INCLUDED

MONUMENTAL
GILLETTE - WRIGHT

W Y O M I N G



DEVILS TOWER
OUR FIRST NATIONAL MONUMENT

ESSENTIAL STOP
ON THE MONUMENTAL ROUTE



YELLOWSTONE
NATIONAL PARK

BIGHORN
NATIONAL FOREST

DEVILS TOWER
NATIONAL MONUMENT

MT. RUSHMORE
NATIONAL MEMORIAL



GILLETTE
THE PERFECT STOP ON ANY JOURNEY

MONUMENT



Donkey Creek Festival

TAL

MONUMENTAL GILLETTE - WRIGHT WYOMING

Devils Tower National Monument

Welcome to Campbell County.



When you're looking for a monumental vacation, look no further than Campbell County, home to Gillette and Wright. Located in the scenic and picturesque northeast corner of Wyoming, Campbell County is just a short drive from Devils Tower, the nation's first national monument and one of the most extraordinary. Situated between Mount Rushmore National Memorial and Yellowstone National Park, a visit to Gillette and Wright is the perfect stop for your trip out west.

Mary
Mary Silvernoll, Executive Director
Campbell County CVB



EXPLORE MORE AT
VISITGILLETTEWRIGHT.COM

CONTENTS

BUFFALO TOURS	2
DEVILS TOWER	2
MUSEUMS	3
DOWNTOWN	4
BREW-MEAD-ERY TOUR	5
ANNUAL EVENTS	10-11
SHOPPING & DINING	12-13
LODGING	14
TRANSPORTATION	15
MAP	16



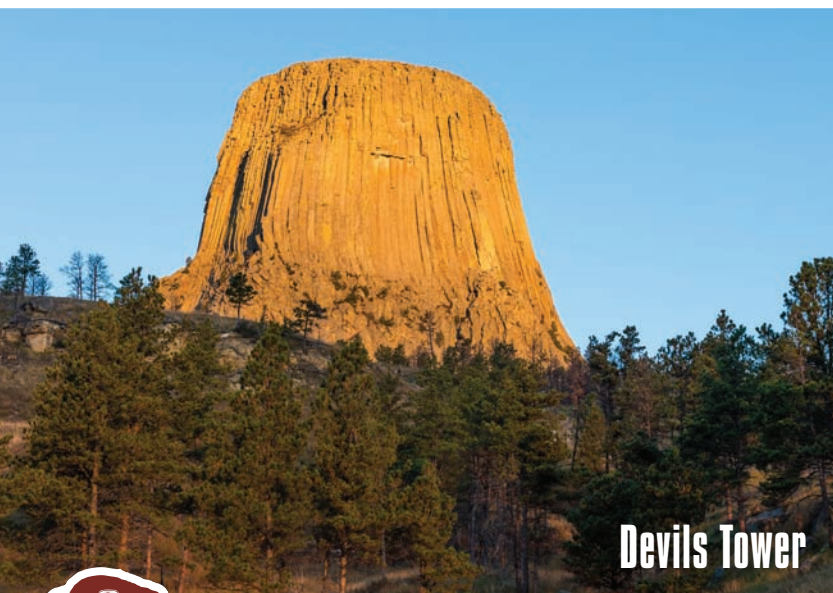


Durham Buffalo Ranch Tours

Buffalo Tours

With approximately 3,000 bison on 65,000 acres in the Wright area, the Durham Ranch is one of the world's oldest and largest buffalo ranches. This historic complex raises bison holistically by maintaining large grazing herds while improving the rangelands on which they live. Tour participants can see special working facilities that the Durham Ranch has been designing and developing since the 1960s. On-site catered ranch meals are available, and anyone who has never tried buffalo must take advantage of this opportunity.

If you enjoy agricultural tours, be sure to ask us about the Geis Cattle and Sheep Ranch tours!



Devils Tower

Devils Tower

Devils Tower, one of nature's grandest rock formations, is a must-see during any visit to the West. Looming more than 1,200 feet above the serene Belle Fourche River and northeastern Wyoming plains, Devils Tower is rich with culture, history and pristine natural beauty. Several Native American tribes have deep ties to Devils Tower, and the legends surrounding its formation are as elegant and intricate as the rivets and grooves within the monument. After you've heard all of the lore, you'll find the geological explanations equally fascinating.

Your Devils Tower visit will not be short on activities. Whether you're looking to simply experience the breathtaking views or climb the Tower, the range of activities fits into any itinerary. You can choose between eight miles of trails near the monument to hike. Most visitors will take the 1.3 mile paved path that circles the formation, while other trails lead in and out of the surrounding forest and terrain. The area wildflowers are exquisite, while bird and animal lovers should always be on the lookout. Those interested in a more structured, informational experience can take a ranger-led tour of the monument which includes a 90 minute walk detailing the geological and anthropological history of the area. And for the truly adventurous, Devils Tower is a climbing mecca.

Wildlife lovers! Be sure to stop at the prairie dog town at the base of the Tower and view these native - and super cute - residents.

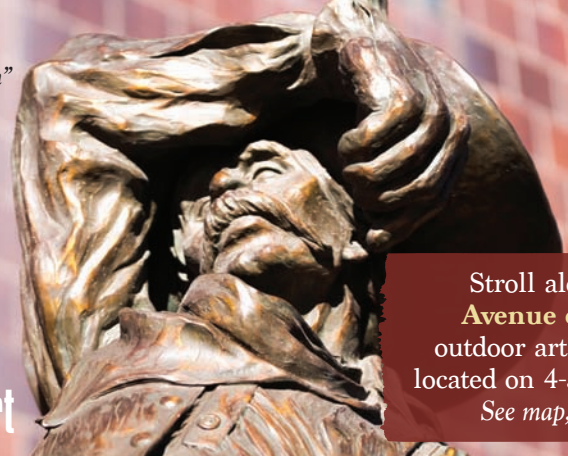




The **Frontier Auto Museum** features antique cars, gas pumps, signs and much more!
211 W. 2nd St.,
(307) 686-5667

Frontier Auto Museum

"Welcome Sundown"
by Hollis Williford



Avenue of Art

Stroll along the **Avenue of Art's** outdoor art gallery located on 4-J Road.
See map, page 17.




Wright Centennial Museum

Museums

As the country's Energy Capital, Campbell County is home to two museums that honor the area's history of energy development and creation. The Rockpile and Centennial museums present the history of ranching and coal mining as well as recognize the institutional individuals responsible for shaping Campbell County into what it is today.

The Rockpile Museum in Gillette focuses on local and regional history with an emphasis on the culture and people of Campbell County. This is the local historic hub for residents and visitors as the museum collects, preserves and interprets the history of Campbell County and northeast Wyoming through exhibits and programs. Permanent and changing displays depict energy, railroad, educational and other important periods and developments. Be sure to grab a photo with the famous rock pile formation outside of the museum.

The Wright Centennial Museum provides a unique opportunity to witness Wyoming history spanning from the homestead era through the foundation of Wyoming. Home to an original Jacob William Benson painting, sheep wagons, historic tools and a special map of area centennial ranches, the Centennial Museum allows visitors to connect with the pioneer spirit that established our country.

GRAB A PHOTO 
with the *legendary rock pile*
outside of the *Rockpile Museum.*





Downtown Gillette

For small-town charm and entertainment for the whole family, visit Downtown Gillette. Unique and quaint shopping opportunities, delicious regional flavors, local breweries and bars all beneath the wide open Wyoming sky. This treasured area will feel both familiar and fresh with the allure of a classic downtown experience but with enough variety and character to find what you're looking for. Plan to spend a day downtown to meet Gillette's friendly locals and enjoy the new 3rd Street Plaza.

Recreation Center

Just because you're on vacation doesn't mean you have to skip exercise, and with Gillette's state-of-the-art recreation center, you'll want to hit the gym during your visit. The 190,000 square foot facility features a 42-foot climbing wall designed to resemble Devils Tower Monument. You'll also find three basketball courts, four racquetball courts, a six-lane 200 meter track and five indoor tennis courts. With weight rooms, a cardio area, a variety of fitness classes as well as a kids zone with babysitting, a good sweat session will fit right into your itinerary.



Lazy River

Aquatic Facilities

Be sure to bring your swimsuit and splash around in the Rec Center's incredible swimming area that includes a six-lane lap pool, a three meter diving platform, a zero-depth leisure pool featuring two water slides, a lazy river and many toy features. With an accommodating staff and preeminent facilities, the Rec Center is perfect for serious exercise or a fun place to take the kids.



Recreation Center





Brew-Mead-ery Tour

If you are so inclined, enjoy a new tradition in Gillette, the Brew-Mead-ery Tour. In addition to the traditional bars and lounges in town, Gillette is also home to an exceptional craft brewery and the first authentic meadery in the state of Wyoming.

Located at the historic building that was once the Gillette Post Office in the heart of downtown Gillette, Gillette Brewing Company creates over 20 hand crafted beers loved by locals, visitors and beer judges alike. At the corner of Second and Gillette Avenue, you'll find tasty beers all crafted and brewed onsite. You can't go wrong with any beer GBCo. has on tap. Be sure to buy a growler of you favorite style to take back home!

Just a block away, at 106 S. Gillette Ave., Big Lost Meadery awaits. Big Lost is a homegrown meadery and lounge specializing in handcrafted meads and great experiences. Visit Wyoming's first dedicated meadery for some of the freshest flavors of this honey-based alcohol. Grab a drink at the bar (you are served the meads in steer horns - just like the Vikings drank mead from thousands of years ago), then buy a bottle to take back home as a unique souvenir.



Regulation Hockey Rink



CAM-PLEX Theater

CAM-PLEX

The CAM-PLEX Multi-Events Facilities in Gillette provide over 1,000 acres of possibilities. In addition to the CAM-PLEX Heritage Center, Wyoming's premiere performing arts center, the facilities include a convention and exhibit hall, two large multi-purpose pavilions, rodeo grounds, RV campgrounds, a 21-acre park and a picnic area. Year-round entertainment includes performing arts theatre, Broadway plays, musicals, symphonies, rodeo and concerts featuring national recording artists. Whenever you plan your visit to Campbell County, there's sure to be something happening at the CAM-PLEX.

As the biggest multi-event space in the region, CAM-PLEX features exceptional venues, facilities and events. Past events include the Pyrotechnics Guild International's Fireworks Convention, ZZ Top, comedian Lewis Black and Mannheim Steamroller in addition to dozens of annual rodeos (including the National High School Rodeo Finals!), motocross races, equestrian programs, hockey games, conventions, RV rallies, symphony orchestra performances, trade shows, live horse racing, sales, art exhibits, plays and much more. Visit cam-plex.com to see the entire calendar and purchase tickets to all events.

CAM-PLEX - 1,100 Acres



Indoor or Outdoor Rodeo



Adventurarium



This hands-on science center is an amusement park for kids and an educational dream for parents. With everything from a bubble experiment to a dizzying gravity ride, the kids will have a great time creating rainbows, experimenting with sunlight and interact with insects and reptiles and much more.

Golf



Golf anyone? Campbell County is home to three unique and challenging golf courses: In Gillette, Bell Nob Golf Course is a municipal, 18 hole championship course over 7,024 yards with a par of 72, plus a par-3, 9 hole course. The Gillette Golf Club is a public 9 hole course. In Wright, you can hit the links at the 9 hole Hay Creek Municipal Golf course.



Softball Tournaments

Energy Capital Sports Complex

Gillette continues to invest in its youth, recreation and visitor opportunities with the addition of the Energy Capital Sports Complex. This brand new facility is comprised of 320 acres of land that has been developed into four state-of-the-art competitive softball fields. With future plans for the land including multiple baseball fields and soccer fields, be sure to check back each visit to see what new possibilities await at the Energy Capital Sports Complex.



Goto Chronos II

Gillette Planetarium

Many visitors are surprised to learn that Gillette is home to a world-class planetarium, but after a \$2.8 million upgrade, the Sage Valley Planetarium now has technology available at only four other planetariums in the world. The Goto Chronos II star projector gives audiences a view of more than 3 million objects on a 30 foot diameter dome, including 8,000 stars, Milky Way galaxy and deep sky objects. Not even the sky is the limit in Campbell County.



World's largest Surface Coal Mines

Energy Capital

Hunting & Fishing

With more pronghorn antelope than anywhere else in the world, Campbell County is on the wish list of hunters across the country. Experience the thrill of the chase in the cool, crisp Wyoming air during your visit. In addition to pronghorn, Campbell County offers world-class elk and mule deer hunting.

Fishermen flock to Keyhole Reservoir, located 30 miles east of Gillette, for world class trout, walleye and northern pike fishing. If you are a serious fisherman, be sure to hire a local fishing guide to ensure a bountiful outing.



Pronghorn Antelope Doe

Known as the “Energy Capital of the Nation,” coal from the Powder River Basin in Campbell County powers much of the nation. In fact, the Powder River basin provides 40% of our nation’s coal. Experience the energy of Campbell County first hand during summer coal mine tours, which are available at the Visitor Center. The main reason, however, that the Campbell County coal is in such high demand is because of its low sulfur content which produces lower carbon emissions. Tour participants will drive alongside the massive equipment, witness reclamation processes that restore coal mining lands and see firsthand just what makes Campbell County the Energy Capital of the Nation.

Campbell County supplies
over 40%
of the nation’s coal.



Sub-bituminous coal is soft and combustible, and burns cleaner than other coal from around the world.



Town of Wright



Wright Visitor Center

The small town of Wright, Wyoming is a perfect stop for a visitor looking to experience small-town Wyoming life. An overnight stay is the perfect addition to a trip to Campbell County.

After you've admired the idyllic pond in the center of town, you won't be short on activities. Wright's Centennial Museum captures Wyoming's broad history ranging from pioneer spirit to the energy industry. For leisure, schedule a tee time on the 9-hole Haycreek Golf Course or catch a rodeo or other ag-related event at the Southern Campbell County Ag Complex. And for a steak so flavorful it could only be made in Wyoming, dine at the Open Range Steakhouse.

And for a real party on your vacation, schedule a visit during Wright Days in late June. Dive into the mud volleyball pit, run or walk a 5K, watch a movie in the park or enter into mayhem with the famed demolition derby. Bring the family for an outdoor celebration of summer in Wright.



Southern Campbell County Ag Complex

Wright Days



Taste of Wright



ANNUAL EVENTS

Check out the full
events calendar at
VisitGilletteWright.com



Ice Fest

FEBRUARY

JULY

4th of July Celebration



JULY

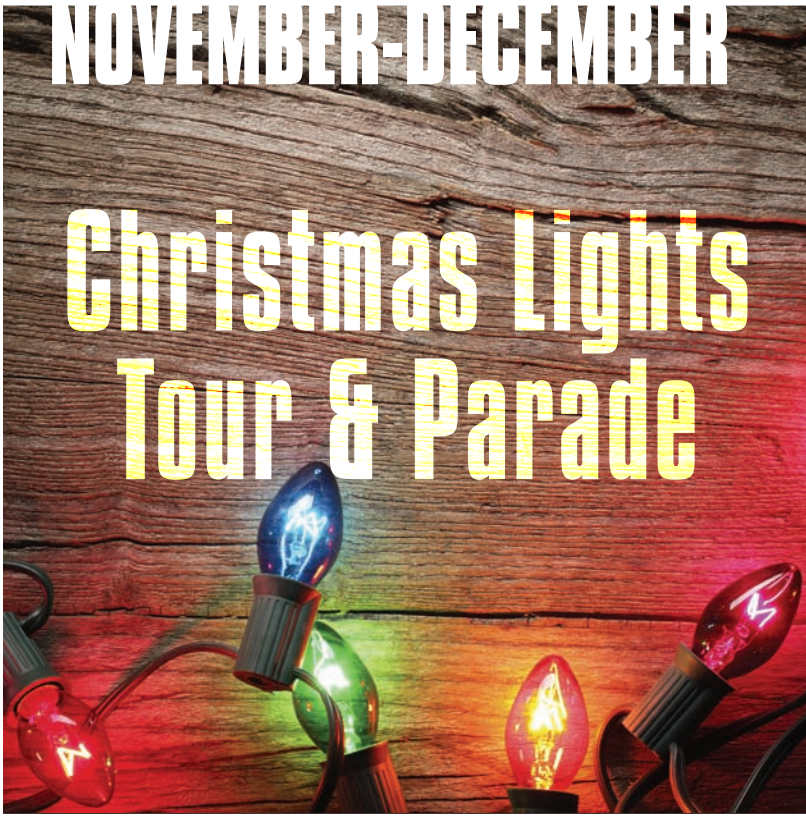
National High School Finals Rodeo





Donkey Creek Festival

JUNE



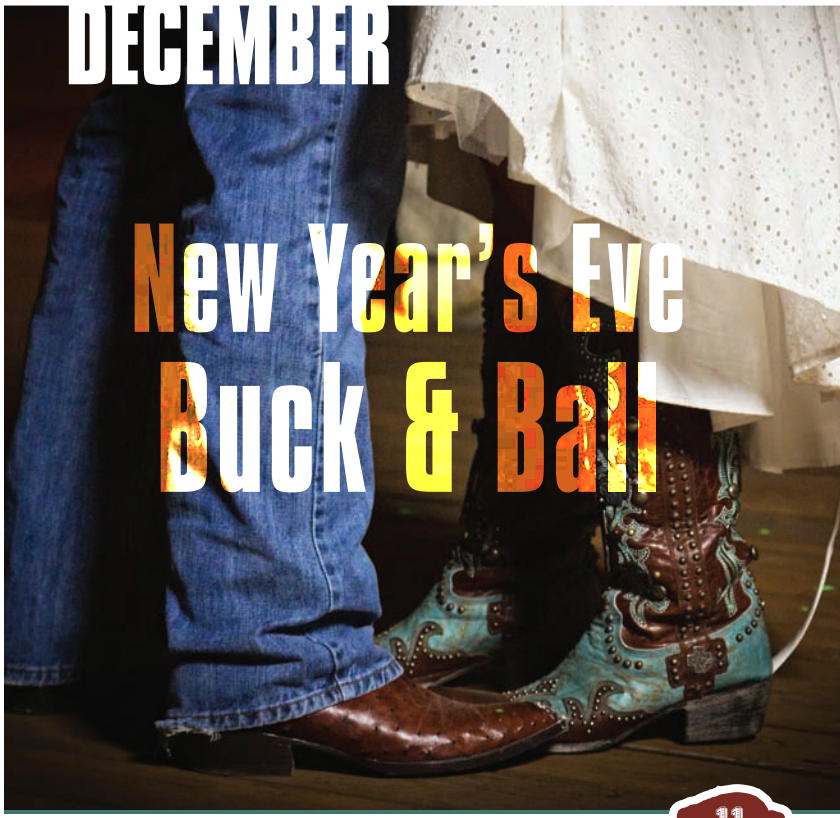
NOVEMBER-DECEMBER

Christmas Lights Tour & Parade



Gillette Brew Fest

JULY



DECEMBER

New Year's Eve Buck & Ball



SHOPPING

GIFTS

A Prairie Dawn

1103 E Boxelder
(307) 687-3133
Home décor, gifts, candles, and much more

Avenue Mall

217 S Gillette Ave
(307) 299-1649
Many vendors with different items

Celebration Station

501 S Douglas Hwy
(307) 682-2808
Party supplies

Cole Sports

320 S Gillette Ave
(307) 682-1302
Sports clothing, sporting goods

Cooks Nook

202 S Gillette Ave
(307) 687-0421
Housewares, specialty food

Crazy Woman Mercantile

214 S Gillette Ave
(307) 682-3152
Clothing, home decor, gifts

Deckers Sweets & More

804 E 4th St
(307) 670-9406
Caramel, chocolate, taffy and more

Dollar Tree

2005 S Douglas Hwy
(307) 682-7306
Party supplies, health products, beauty products and more

Down to Earth

900 Camel Dr
(307) 689-0601
Essential oils, tapestries, home décor and more

Dungeons & Dugouts

439 Prairieview Dr, Ste A
(307) 689-6674
Hobby shop, sports trading cards and more

Exclusively Amish Furniture

201 S Gillette Ave
(307) 682-3177
Amish furniture

Family Dollar

700 S Douglas Hwy
(307) 682-9910
Home goods, toys, and more

Forget Me Not Floral & Gift

900 Camel Dr
(307) 686-7357
Flowers, gifts

Gillette Cheese House

118 S Gillette Ave
(307) 685-6449
Cheeses, bakery items, bulk foods, meats, and much more

Gillette Real Deals

on Home Décor
1850 Warlow Dr, Units C & D
(307) 257-7530
Mirrors, clocks, metal art, seasonal items and much more

Go West Games

700 S Douglas Hwy
(307) 685-0900
Games

Hastings Entertainment

2610 S Douglas Hwy
(307) 682-6417
Music, books, electronics and more

Heaven to Earth

2610 S Douglas Hwy
(307) 687-0001
Flavored oils, cookware, stemware and more

Hermans Antiques

370 Hwy 50
(307) 682-5336
Antiques

Longhorn Tack & Gifts

502 E Lakeway Rd
(307) 687-0076
Collection of saddles, bits, grooming supplies and more

Mag Pie Designs

219 S Gillette Ave
(307) 682-1760
Housewares and gifts

Moments for Pause

502 E Lakeway Rd
(307) 687-0076
Gift shop, home décor

My Made In America Store

900 Camel Dr
(307) 660-4199
Flags, toys, soaps, cookware and more

Pat's Hallmark

200 S Gillette Ave
(307) 686-1296
Collectibles, gifts, cards

Relic No. 9

1211 S Douglas Hwy, Ste 150
Handmade, upcycled, antiques home décor

Rocky Mountain Discount Sports

4706 S Douglas Hwy
(307) 686-0221
Sporting goods, outdoor items

Spring Creek Design

306 W Lakeway Rd
(307) 682-4003
Flowers, Gifts

Teacher's Corner Kids Mart

213 S Gillette Ave
(307) 686-9231
Toys, teacher supplies and more

Tractor Supply

4005 S Douglas Hwy
(307) 682-1165
Clothing, shoes, outdoor stuff, gun safes and much more

Unity Enterprises

439 Prairieview Dr
(307) 670-8819
Essential oils, body mist, linen and room sprays and more

Value Villa

1600 W 2nd
(307) 682-4134
Thrift store

Wyoming Art & Frame

304 S Gillette Ave
(307) 686-7049
Picture framing, art

CLOTHING

2nds on the Avenue

203 S Gillette Ave
(307) 682-3129
Thrift store

Back to the Rack Consignments

2808 Dogwood Ave
(307) 685-2322
Clothing, shoes and more

Boot Barn

2610 S Douglas Hwy
(307) 682-6200
Western wear for men and women, boots and more

Famous Footwear

2610 S Douglas Hwy
(307) 682-7863
Shoes, socks, sports bags

Main Elements Apparel

2711 S Douglas Hwy
(307) 363-4200
Men and woman's designer apparel, accessories

Maurice's

2610 S Douglas Hwy
(307) 686-0914
Women's clothing, shoes, accessories

Over the Moon

2610 S Douglas Hwy
(307) 682-2921
Women's clothing, accessories and more

Payless Shoes

900 Camel Dr
(307) 686-0094
Shoes, socks, purses

Rue 21

2610 S Douglas Hwy
(307) 682-2149
Clothing, accessories and more

Sole Mates

211 S Gillette Ave
(307) 685-2612
Shoes, shoe repair

Sports Authority

2610 S Douglas Hwy
(307) 682-3611
Sports apparel, shoes, bags, equipment and more

Universal Athletic

2701 S Douglas Hwy
(307) 686-6605
Athletic gear, clothing and much more

Working York Warehouse

410 E Lakeway Rd
(307) 682-5053
Work apparel, boots and much more

GROCERIES/GENERAL

Albertson's

2610 S Douglas Hwy
(307) 686-7352
Groceries, liquor, pharmacy, Wells Fargo and Starbucks

Bongaars

195 Town Center Dr
(307) 686-4101
Housewares, tools, farm and ranch supplies and more

Don's Supermarket

1501 E 2nd
(307) 687-1086
Groceries

Gillette Electronics & Photo Imaging Center

900 Camel Dr
(307) 682-9311
Electronics and photographic services

Health Styles Market

3600 S Douglas Hwy
(307) 682-8447
Natural and organic food, supplements and more

Home Depot

1105 E Boxelder Rd
(307) 686-8128

Kmart

2150 S Douglas Hwy
(307) 687-7774
Home goods, clothing, and much more

La Casita Mexican Store

900 Camel Dr
(307) 682-4141
Grocery store, specialty items

Manila Asian Store

107 E 3rd St
(307) 670-8713
Food & grocery

Menards

1051 E Lakeway Rd
(307) 682-0711
Home improvement, hardware, plumbing and more

Office Depot

2005 S Douglas Hwy
(307) 685-1394
Office supplies

Smith's Grocery

906 Camel Dr
(307) 682-1103

Wal-Mart

2300 S Douglas Hwy
(307) 686-4060
Home goods, clothing, groceries and much more

Walgreens

2000 S Douglas Hwy
(307) 682-4517
Pharmacy, 1 hour photo, vitamins, and more

DINING

BAKERY

Alla lalla Cupcakes

204 S Gillette Ave
(480) 205-9879

Breanna's Bakery

208 S Gillette Ave
(307) 686-0570

Pho and Bakery 59

51 Town Center Dr, Ste 100
(307) 685-2259

BBQ

Buffalo Wild Wings

2550 S Douglas Hwy, Ste 100
(307) 257-2163

Dickey's BBQ

2610 S Douglas Hwy
(307) 686-8698

Pokey's Smokehouse & BBQ

408 S Douglas Hwy
(307) 687-7653

CAFE

Lula Belle's Café

101 N Gillette Ave
(307) 682-9798

Mona's Café

403 El Camino Rd
(307) 686-0672

R Place

500 OR Dr
(307) 363-4366

Roberto's Café

10698 State Hwy 59 S
(307) 682-3850

COFFEE

Brothers Coffee

300 S Gillette Ave
(307) 682-4199

City Brew

2711 S Douglas Hwy, Ste 130
(307) 363-4087

The Coffee Beanery

501 E Boxelder Rd
(307) 686 8255

Coffee Friends

320 S Gillette Ave
(307) 686-6119

Expresso Lube

605 W Lakeway Rd
(307) 682-7339

Hardback Coffee Café

2610 S Douglas Hwy, Ste 300
(Inside Hastings)
(307) 682-6417

Simply Brewed

3801 S Douglas Hwy
(307) 257-3772

Starbucks

1215 S Douglas Hwy
(307) 682-3751

Starbucks

2610 S Douglas Hwy
(inside Albertsons)
(307) 686-7352

DELI

Jimmy Johns

902 Country Club Rd
(307) 682-7090

Main Bagel Co.

2610 S Douglas Hwy
(307) 687-1616

Quizno's Classic Subs

1103 E Boxelder Rd, Bldg A
(307) 682-9548

Smiling Moose Deli

2711 S Douglas Hwy
(307) 363-4104

Subway

1001 S Douglas Hwy, Ste 220
(307) 686-1002

Subway

1703 W 2nd St
(307) 685-0505

Subway

2300 S Douglas Hwy
(inside Wal-Mart)
(307) 686-6565

Subway

2809 4J Rd
(307) 685-8201



Subway

1107 E Boxelder
(307) 686-3033

ETHNIC

China King Buffet

900 Camel Dr, Ste J
(307) 685-2222

El Burrito Express

900 Camel Dr
(307) 686-8010

Fiesta Tequila

311 S Gillette Ave
(307) 686-8010

Great Wall

2007 S Douglas Hwy, Unit B
(307) 686-1811

Hong Kong Restaurant

1612 W US Hwy 14-16
(307) 682-5829

I Siciliani Italian Restaurant

2700 S Douglas Hwy
(307) 682-2922

La Catrina Mexican Food

2610 S Douglas Hwy
(307) 670-8112

Las Margaritas

2107 S Douglas Hwy
(307) 682-6545

Los Compadres

1700 W US Hwy 14-16
(307) 682-1101

Pho & Bakery 59

51 Towne Center, Ste 100
(307) 685-2259

Qdoba Mexican Grill

2711 S Douglas Hwy
(307) 363-4088

FAST FOOD

A&W/Long John Silver's

1920 Cliff Davis Dr
(307) 682-6280

Arby's

2720 S Douglas Hwy
(307) 686-7545

Burger King

2200 S Douglas Hwy
(307) 687-0400

Burger King – Shell station

106 N Hwy 14-16
(307) 682-2809

Dairy Queen

2003 S Douglas Hwy
(307) 682-5212

Good Times Burgers /

Taco John's
610 E Boxelder
(307) 685-6950

Hardee's

207 S Miller
(307) 687-1620

Kentucky Fried Chicken

2250 S Douglas Hwy
(307) 686-5177

McDonald's

806 Camel Dr
(307) 686-0606

McDonald's

2112 Westover Rd
(307) 682-1134

Taco Bell

701 E Boxelder Rd
(307) 682-3355

Taco John's

808 E 2nd St
(307) 682-2224

Wendy's

1913 S Douglas Hwy
(307) 686-0106

FINE DINING

Boot Hill Legendary Steakhouse & Nightclub

910 N Gurley Ave
(307) 686-6404

Chophouse Restaurant

113 S Gillette Ave
(307) 682-6805

Jordans Western Dining Restaurant

2721 S Douglas Hwy
(307) 257-7704

Prime Rib Restaurant and Wine Cellar

1205 S Douglas Hwy
(307) 682-2944

Sakura Japanese Steak House Sushi Bar

2550 S Douglas Hwy
(307) 670-8040

Sapporo Japanese Steak House

1000 E Boxelder Rd
(307) 363-4795

Silver Creek Steakhouse at Towers West

109 N Hwy 14-16
(307) 686-2210

FULL MENU

Applebee's

1927 Cliff Davis Dr
(307) 685-1110

CJ Roosters

1414 W 2nd St
(307) 687-1200

Humphrey's Bar & Grill

408 W Juniper
(307) 682-0100

Old Chicago

1100 E Boxelder Rd
(307) 682-3303

Perkins Family Restaurant

2510 S Douglas Hwy
(307) 622-1183

Ruby Tuesday

420 E Boxelder Rd
Opening May 2016

Village Inn

806 E 2nd St
(307) 682-8823

ICE CREAM/ FROZEN YOGURT

Bear's Treat Time FroYo & Fries

2510-2610 S Douglas Hwy, Ste 210
(307) 682-2844

Cherry Berry

1103 E Boxelder Rd, #H
(307) 257-2885

Ice Cream Café

2007 S Douglas Hwy, Ste D
(307) 686-8110

Ice Cream Land

802 E 3rd St
(307) 685-0550

LOUNGE/SPORTS BAR

Buffalo Wild Wings

2550 S Douglas Hwy
(307) 257-2163

Center Bar

110 S Gillette Ave
(307) 685-8047

Eastside Liquors

1500 E Hwy 14-16
(307) 682-0880

Fireside Lounge

114 N Hwy 14-16
(307) 682-7545

Gillette Brewing Company

301 S Gillette Ave
(307) 670-8948

Good Times Lounge

2701 South Douglas Hwy
(307) 682-0808

Jake's Tavern

5201 S Douglas Hwy
(307) 686-3781

Lakeside Liquor

409 E Lakeway
(307) 682-8100

Lariat Cafe & Lounge

1020 E US Hwy 14-16
(307) 685-2231

Mingles Lounge

2209 South Douglas Hwy
(307) 686-1222

Montgomery Bar

100 S Gillette Ave
(307) 682-4516

The Office Saloon

1400 N US Hwy 14-16
(307) 687-7713

Other Side Bar & Grill

906 E 2nd St
(307) 682-3135

Rustic 13 Lounge

2009 S Douglas Hwy
(307) 686-3000

Silver Creek Steakhouse at Towers West

109 N Hwy 14-16
(307) 686-2210

Spotted Horse

7021 US Hwy 14-16
(307) 736-2252

Uncle Freddie's Junkyard Grill & Pizza

2209 S Douglas Hwy
(307) 686-7570

PIZZA

Domino's Pizza

403 W Lakeway
(307) 682-5999

Domino's Pizza

207 W 2nd St
(307) 682-4999

Little Caesars Pizza

811 Camel Dr
(307) 682-8888

Papa John's Pizza

800 E 2nd St
(307) 687-7272

Papa Murphy's Pizza

2126 S Douglas Hwy
(307) 686-7272

Pizza Carrello

400 West 2nd St
(307) 363-1743

Pizza Hut / Wing Street

627 E Boxelder
(Carryout or Delivery)
(307) 682-8200

Pizza Hut/ Wing Street

1711 W 2nd St
(307) 686-0360

SPECIALTY

Big Lost Meadery

106 S Gillette Ave
(307) 660-3199

The Coop Rotisserie House

208 W 2nd St
(307) 257-7460

WRIGHT, WY

Blooming's Coffee Shop

7568 Hwy 59 S
(307) 464-0889

Don's Supermarket

105 Wright Blvd
(307) 464-0029

Hank's Roadside Bar and Grill

7508 State Hwy 59 S
(307) 939-1298
Unique gift store

Haycreek Golf Club

1229 E Elkhorn
(307) 464-0747
Seasonal

Iris's Quality Diner

501 Wright Blvd
(307) 299-1232

Larry & Sharon's Place

105 Wright Blvd, Latigo Hills Mall
Unit C120
(307) 464-1202

The Nail & Bowling Alley

501 Wright Blvd
(307) 464-6016
Serves food

Open Range Steakhouse

350 Reata Drive
(307) 464-6161

Papa John's Pizza

100 Rampart Drive
(inside Exxon Station)
(307) 464-0625

Subway

109 Rampart Drive
(307) 464-6782



HOTELS & MOTELS • GILLETTE & WRIGHT

Head to VISITGILLETTEWRIGHT.COM

for more information on accommodations in Campbell County

			Total Rooms	Shuttle Service	Pets Allowed	Wi-Fi	Continental Breakfast	Restaurant	Lounge	Fitness Center	Pool	Laundry	Kitchenettes	Meeting Rooms	Handicap Accessible
America's Best Value Inn	608 E. 2nd St.	(307) 682-9341	56		•	•	•				•	•			•
Anchor Hotel	700 E. 3rd St.	(307) 660-0050	20			•									
Arrowhead Motel	202 S. Emerson St.	(307) 686-0909	32		•	•						•	•		
Arbuckle Lodge	1400 S. Garner Lake Rd.	(307) 685-6363	86		•	•	•			•	•	•	•	•	•
Best Western Tower West Lodge	109 N. U.S. Hwy. 14-16	(307) 686-2210	190	•	•	•		•	•	•	•	•	•	•	•
Budget Inn Express	2011 Rodgers Dr.	(307) 670-8134 (800) 709-6123	49		•	•	•				•	•			•
Candlewood Suites	904 Country Club Rd.	(307) 682-6100 (877) 226-3539	83		•	•				•		•	•		•
Circle L Motel	410 E. 2nd St.	(307) 682-9375	33		•										
Comfort Inn & Suites	1607 W. 2nd St.	(307) 685-2223 (800) 424-6423	60	•	•	•	•			•	•	•		•	•
Country Inn & Suites	2597 S. Douglas Hwy.	(307) 682-0505	80	•		•	•			•	•	•			•
Days Inn	910 E. Boxelder Rd.	(307) 682-3999 (800) 329-7466	141		•	•	•			•		•			•
Fairfield Inn & Suites	2577 S. Douglas Hwy.	(307) 682-1717	80	•		•	•			•	•	•			•
Hampton Inn	211 Decker Ct.	(307) 686-2000 (800) 426-7866	57	•	•	•	•			•	•	•		•	•
Holiday Inn Express	1908 Cliff Davis Dr.	(307) 686-9576 (866) 690-9800	83		•	•	•			•	•	•		•	•
Home2 Suites by Hilton	1120 E. Boxelder Rd.	(307) 257-7040	99		•	•	•			•	•	•	•		•
Howard Johnson	1004 E. Hwy. 14-16	(307) 682-2616 (800) 446-4656	75	•	•	•	•						•		
LaQuinta Inns & Suites	450 Boxelder Rd.	(307) 686-6000	112		•	•	•			•	•	•		•	
M & A Motel	109 Rampart Dr., Wright	(307) 464-1115	18										•		•
Marriott TownePlace Suites	Coming in 2016	(307) 686-2210													
Motel 6	2105 Rodgers Ave., at I-90 & 14-16	(307) 686-8600 (800) 466-8356	74		•	•				•		•			•
Mustang Motel	922 E. 3rd St.	(307) 682-4784	31		•	•									
National 9	1020 Hwy. 14-16	(307) 682-5111 (800) 524-9999	80		•	•		•	•		•				•
National 9	519 Latigo Dr., Wright	(307) 464-1510	27		•	•						•	•		•
Quality Inn	409 Butler Spaeth Rd.	(307) 682-4757	62		•	•	•			•					
Ramada Plaza	2009 S. Douglas Hwy.	(307) 686-3000	159	•	•	•	•	•	•	•	•	•	•	•	•
Super 8	208 S. Decker Ct.	(307) 682-8078 (800) 800-8000	61		•	•	•					•			•
Wingate by Wyndham	1801 Cliff Davis Dr.	(307) 685-2700 (800) 288-1000	84	•		•	•			•	•	•		•	•
Wright Hotel	300 Reata Dr., Wright	(307) 464-6060	71		•	•	•	•	•			•		•	•
RV PARKS & CAMPGROUNDS GILLETTE, WRIGHT & ROZET			Total Sites	Store	Pets	Wi-Fi					Pool	Laundry	Waste Dumps	Showers	Handicap Accessible
All Seasons RV Park	1000 McIntosh Ln., Rozet	(307) 686-2552	20		•	•						•		•	•
Green Tree's Crazy Woman	1001 W. 2nd St.	(307) 682-3665	108	•	•	•						•		•	•
High Plains Campground	1600 S. Garner Lake Rd.	(307) 687-7339	65	•	•	•						•	•	•	•
Sagebluff RV Park	56 S. Boulder Circle, Wright	(307) 464-1305	76		•	•						•		•	•



TRANSPORTATION

Driving to Gillette

Arriving from the east, west or north: Use Interstate 90.
Arriving from the south: Use Interstate 25, then exit to Wyoming Highway 59. Bus service is also available.

Flying to Gillette

The Gillette-Campbell County Airport features daily direct jet service to and from Denver and Salt Lake City on United and Delta airlines, free parking and free Wi-Fi. Visit www.iflygillette.com for more information and to reserve a flight.

SkyWest Airlines

For reservations:

(800) 221-1212

www.delta.com

www.united.com

www.iflygillette.com



Operated by SkyWest Airlines



Taxi & Courier Service

City Cab

(307) 685-1000

D.C. Taxi Service

(307) 299-8294

Taxi, limousine & handicap bus. Nonsmoking.

Bus Charter Information

Coach America

1700 East U.S. Hwy. 14-16

(307) 682-0960

Powder River Bus Lines

(307) 682-0960

Northeast Wyoming Shuttle Service

(844) 210-6438

Limousine Service

C & R Limousine Service

(307) 689-2065

Blue Moon Limo Service

(409) 651-1994

Vehicle Rental

Avis Rent-A-Car - Airport

(307) 682-8588

(800) 331-1212

Enterprise Rent-A-Car

603 E. 2nd Street

(307) 686-5655

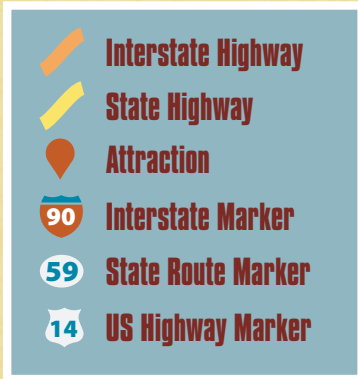
(800) 736-8222

Hertz Rent-A-Car

Located at Airport

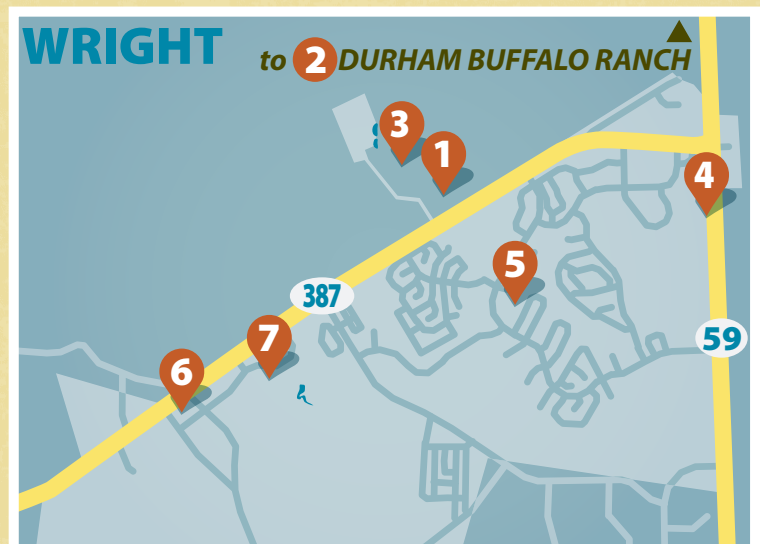
(307) 686-0550

MONUMENTAL GILLETTE - WRIGHT WYOMING

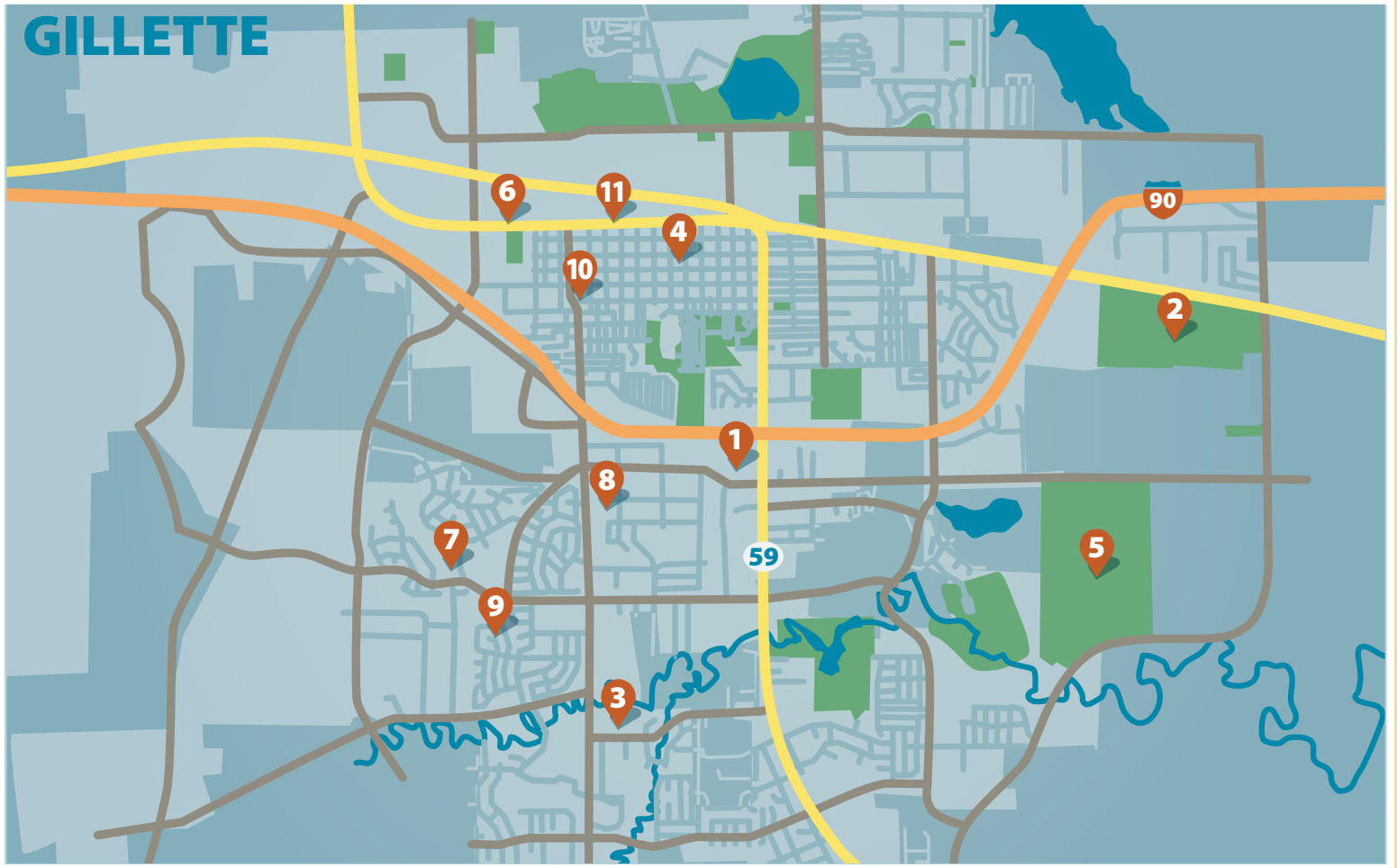


Attractions in Wright

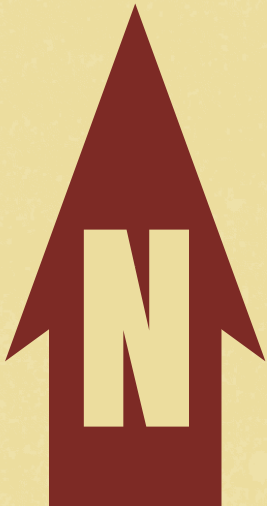
1. Wright Visitor Center
2. Durham Buffalo Ranch
3. Panther Pond
4. Wright Centennial Museum
5. Wright Recreation Center
6. Southern Campbell County Ag Complex
7. Hay Creek Golf Club



GILLETTE



Attractions in Gillette



1. Gillette Visitor Center
2. CAM-PLEX
3. Gillette Recreation Center
4. Gillette Ave. - "Main Street"
5. Energy Capital Sports Complex
6. Rockpile Museum
7. Planetarium
8. Public Library
9. Adventurarium
10. Avenue of Art
11. Frontier Auto Museum

CAMPBELL COUNTY
CONVENTION & VISITORS BUREAU
1810 S. DOUGLAS HIGHWAY, SUITE A
GILLETTE, WY 82718

