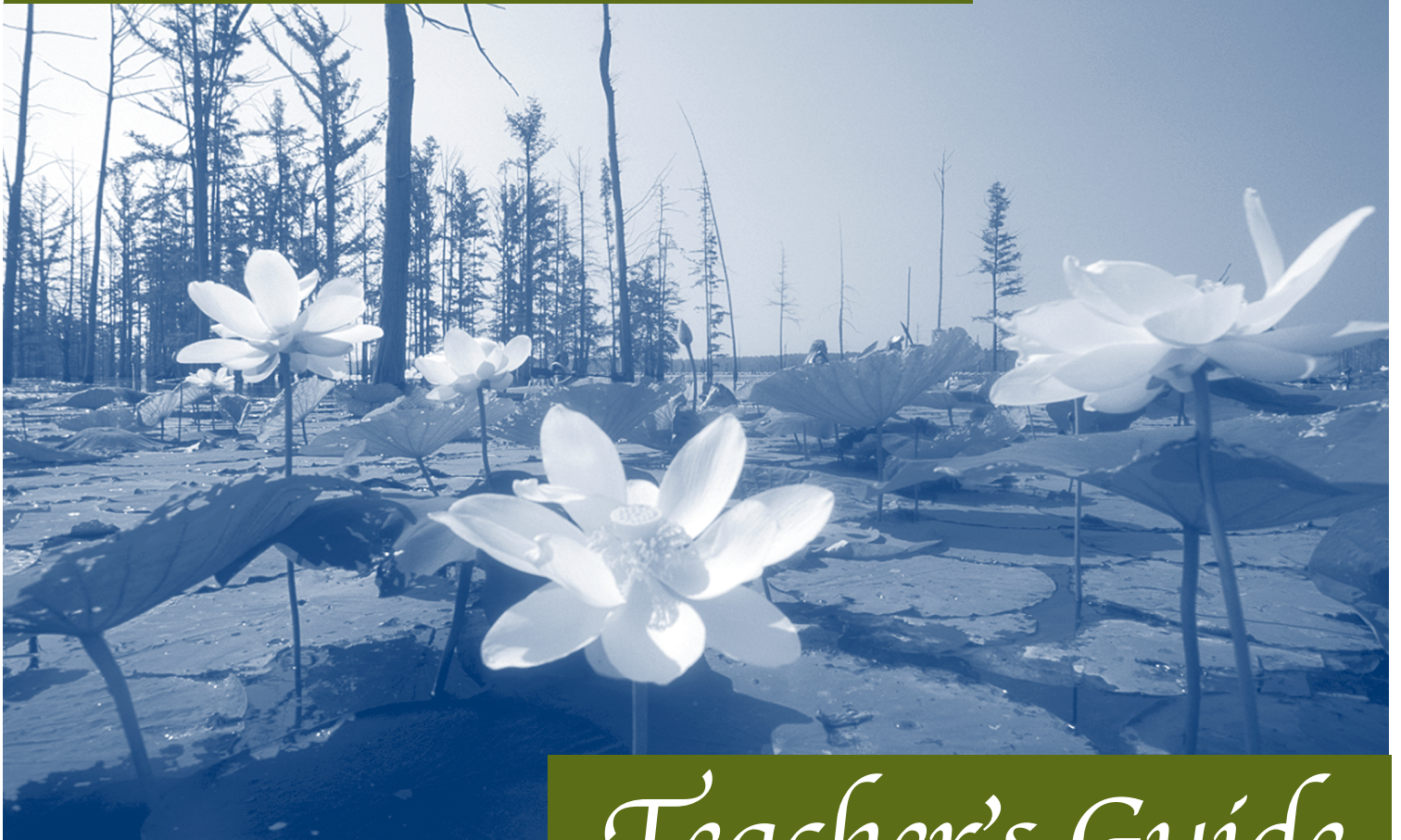


# *Cane Creek State Park*



# *Teacher's Guide*



Written by Melissa Drake, Park Interpreter  
Cane Creek State Park

Richard Davies, Executive Director  
Arkansas Department of Parks & Tourism

Greg Butts, Director, Arkansas State Parks

Jay Miller, Administrator, Program Services

Mike Wilson, Superintendent  
Cane Creek State Park

Arkansas Department of Parks and Tourism  
State Parks Division  
One Capitol Mall  
Little Rock, AR 72201  
(501) 682-1191  
[www.ArkansasStateParks.com](http://www.ArkansasStateParks.com)

First edition, 2006

## About This Guide

This guide was designed to inform educators about the variety of programs offered at Cane Creek State Park. Cane Creek is a 2,053 acre park located near Star City. We are very excited about you visiting the park, but we also are willing to come to you. For each program you will find a short description, amount of time needed, location and the curriculum framework strands it meets. A park interpreter is also able to offer programs not listed in this handbook. If you are interested in a special topic, give us a call and we can develop a program to fit your needs.

## Mission Statement

Cane Creek State Park exists to preserve and protect scenic, natural, and cultural resources found therein; to inform and promote the importance of those resources to the public; and to provide and maintain facilities that enhance the visitor's recreational experience.

## Interpretive Mission Statement

Cane Creek State Park is a natural area which has been preserved by the Arkansas Department of Parks and Tourism because of its two distinct natural divisions, the West Gulf Coastal Plain and the Mississippi Alluvial Plain. Our mission is to enhance the public's personal experiences and knowledge of Cane Creek State Park's unique divisions, flora, and fauna by educating, thoughtfully preserving, and providing memorable experiences for current generations and for those in the future.

## Park History

In January 1972, the Arkansas State Parks Recreation and Travel Commission authorized a study, after receiving a proposal from the Arkansas Game and Fish Commission (AG&F), to jointly develop a lake and park in southeast Arkansas. After completion of the study, Arkansas State Parks (ASP) entered into a cooperative agreement with AG&F and the Natural Resources Conservation Service (NRCS) to develop a lake and adjoining park. ASP was responsible for acquiring, developing, and managing the park area. NRCS provided partial funding for land acquisition in 1973. Land acquisition was completed and the first superintendent was put on site in 1981. Funding for construction and park facilities was provided by the legislature and NRCS in 1989. Construction began in 1990, and on May 18, 1992 the park officially opened.

## Lake History

Cane Creek Lake was named for its historical tributary into Bayou Bartholomew. Cane Creek Lake was developed on a natural division separating Lincoln County's rolling hills and delta. The western/southern shoreline skirts the bottom of a ridge and slopes quickly into fairly deep water. Along the north shore of the lake the flat terrain required building a long levee in conjunction with a dam. Lake construction began in 1982 and was completed in 1986. All but a small portion of the 1,675 acre lake is heavily timbered and laced with boat lanes.

## What Does the Park Offer?

Parks are a great place for students to apply what they have been learning in the classroom. Many of our programs support state curriculum strands. We are happy to work with you to develop custom programs to meet your needs. We take pride in offering varied programs for school groups as well as support and services for teachers. With advance notice and curriculum guidelines from the teacher, our staff will plan educational experiences that are not only exciting and memorable but which will reinforce your classroom goals.

## Scheduling Your Visit

To schedule a visit to the park please call the visitor center at (870) 628-4714. You may also email your request to [canecreek@arkansas.com](mailto:canecreek@arkansas.com). We are open seven days a week from 8 to 5. Please contact us *at least* two weeks in advance to schedule a visit. If you are planning a visit for a specific date during April, May or June please call us as soon as possible to schedule as these are our busiest months. If you must cancel a scheduled visit please contact the park as soon as possible. This ensures that students or groups on a waiting list can fill a vacancy.

Upon arrival to the park please check in at the visitor center. The visitor center has restrooms, drinks, candy, snacks, books and souvenir items available as well. If any fees are due they should be paid upon arrival to the park. Pavilions are provided free of charge with a scheduled program. Programs are free unless you will be renting kayaks.

**When you call to schedule your visit, please have the following information ready:**

- Your name
- School name and address
- Address, phone number and email of contact person or teacher
- Number of students and grade level

- Preferred and alternative trip dates
- Arrival and departure time
- Type of program or educational goal of the visit
- Any accommodations for students with disabilities

## *Preview Visit*

If you have never been to Cane Creek State Park, we recommend that you visit the park prior to your scheduled visit. This is a great opportunity to speak with park personnel and familiarize yourself with the available facilities.

## *Prepare Yourself*

- Visit the park before your trip with colleagues and/or chaperones.
- Identify parking, lunch and playground area and restroom locations.
- Consider attending one of our teacher workshops offered throughout the year. These workshops are a great opportunity to discover what your local state parks have to offer as well as earning Arkansas Department of Education Professional Development credits.
- Explore the outdoor areas you plan to visit.
- Meet with a park interpreter to select activities relevant to your curriculum.

## *Prepare Your Students*

Studies have shown that students learn more when they know “what to expect”. Be sure your students know where they will be, what will be expected of them and when they will return. Lack of this basic information often causes worry about “what happens next” and keeps them from concentrating on the educational mission.

Once you have explained the details of the trip, prepare your students with classroom activities related to what they will be doing at the park. The park staff can help you design appropriate pre and post-visit activities. Some of these activities may already be available at the park depending on the program topic you have chosen.

### **Be sure your students know:**

- The date, time and place of departure
- Educational objective of the visit
- Necessary and optional expenses
- Lunch
- Appropriate dress
- Rules (teacher’s and park’s)
- Available free time
- Parental permission forms as required by the school
- Necessary supplies (camera, notebook, pencils, etc...)
- Special assignments/worksheets
- Time they will return to school

## *Chaperones*

It is important that all students have proper supervision. We require one chaperone for every fifteen students (bus drivers qualify). All chaperones should clearly understand their disciplinary duties and stay with their assigned students during the field trip. If a fee is charged for a program, teachers, bus drivers and chaperones are admitted free.

## *Discipline*

Class discipline is the teacher’s responsibility. Please explain to all students that appropriate, orderly behavior is expected during their visit. Please respect park resources and show courtesy to others, keeping in mind that other visitors may be at the park during your visit. **All plants, minerals, animals, fossils and artifacts are protected by state law and may not be disturbed or removed.**

## *Inclement Weather*

Cane Creek State Park has two enclosed pavilions which can accommodate groups of 80 or less. However due to unpredictable weather you may be required to reschedule your visit or modify planned activities. Please contact the park before your visit to check on current weather conditions. Please notify the park immediately if circumstances require you to cancel your visit.

## Lunch

You can bring sack lunches or use one of the barbecue grills in the picnic area at no charge. Enclosed pavilions are available at no charge with scheduled programs, however reservations are required. Soda machines are conveniently located at each pavilion. Candy, snacks and bagged ice are for sale at the visitor center.

A playground meeting ADA requirements is located in the picnic area complete with slides, climbers and other play units. A full-size volleyball court and horse shoe pits are also located nearby.

## Where is Cane Creek State Park?

Cane Creek State Park is five miles east of Star City on State Highway 293.

## Contact Information

### Cane Creek State Park

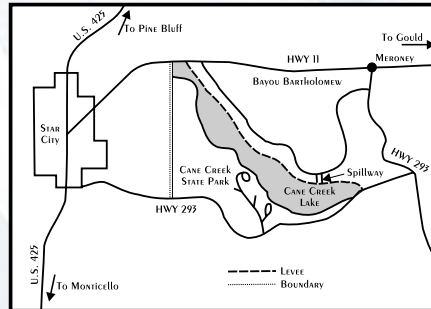
50 State Park Road  
Star City, AR 71667

Telephone: (870) 628-4714

Fax: (870) 628-3611

Email: [canecreek@arkansas.com](mailto:canecreek@arkansas.com)

web: [www.ArkansasStateParks.com](http://www.ArkansasStateParks.com)



# School Programs & Activities

Specialized programs can be developed with a minimum of two weeks advance notice. Park staff is trained in Projects WET, WILD and Learning Tree science based educational activities. The programs listed below have been correlated to the Arkansas Science Curriculum Frameworks. A full description of each Curriculum Frameworks is listed in the Appendix. New programs are developed frequently, please contact a park interpreter for additional programs not listed below. \* denotes fee



## Animal Programs

**Location:** In or out of park.

**Objective:** Students will learn about, view and touch a live animal.

**Grades:** K-12

**Length:** 20 minutes

**Special Conditions:** Contact a park interpreter to discuss animal availability.

**K-4 Frameworks:** LS.2.1, LS.2.3, LS.2.4, LS.2.5, LS.2.7, LS.2.8, LS.3.3

**5-8 Frameworks:** LS.2.3, LS.2.4, LS.2.5, LS.2.7, LS.2.8, LS.2.9

**9-12 Frameworks:** LS.2.4

## Delta View Trail Hike

**Location:** In park.

**Objective:** Depending on age and physical abilities students can walk a portion (0.25 mile) or the entire 2.5 mile long trail. The trail meanders through a bottomland hardwood forest and is representative of wildlife habitat typical for the West Gulf Coastal Plain. Wildlife can be viewed year-round. Species frequently seen include: deer, squirrel, birds, insects, turtles, snakes, and nutria. This area is continually changing so each visit provides a unique experience.

**Grades:** 3 – 12

**Length:** 1/2- 2 hours depending on the length of trail hiked.

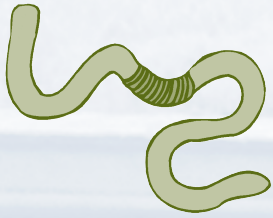
**Special Conditions:** Each hike provides opportunities for new and different experiences.

**K-4 Frameworks:** ES.2.1, ES.3.2, ES.3.3, LS.2.1, LS.2.5, LS.2.8, LS.3.3

**5-8 Frameworks:** ES.1.1, LS.2.3, LS.2.4, LS.2.5, LS.2.8, LS.2.9, LS.2.11, LS.2.12

**9-12 Frameworks:** LS.2.4, LS.2.10, LS.2.13, LS.2.15





## Earthworm Motel

**Location:** In or out of park.

**Objective:** An experimental activity to help students identify beneficial ways in which earthworms modify the environment.

**Grades:** 2-6

**Length:** 30 minutes

**Special Conditions:** Students will need a cool place to keep their motels for approximately 3 days in order to observe changes. Contact a park interpreter in advance to discuss details.

**K-4 Frameworks:** ES.2.1, LS.1.1, LS.2.1, LS.2.4, LS.2.8, LS.2.9, LS.2.10

**5-8 Frameworks:** LS.1.1, LS.1.3, LS.1.4, LS.2.4, LS.2.5, LS.2.9, LS.2.11, LS.3.1, ES.1.1, ES.1.3, ES.3.1



## Hawks, Shrews and Grasshoppers

**Location:** In or out of park.

**Objective:** This is a Project WILD activity. Students will be able to identify ways that pesticides enter the food chain and possible consequences for wildlife populations.

**Grades:** K-12

**Length:** 15 minutes

**Special Conditions:** Works best with groups of 20 or more.

**K-4 Frameworks:** ES.3.3, LS.2.1, LS.2.4, LS.2.5, LS.2.9, LS.2.10, LS.3.3

**5-8 Frameworks:** LS.2.3, LS.2.4, LS.2.5, LS.2.8, LS.2.11, LS.2.12

**9-12 Frameworks:** LS.2.10, LS.2.11, LS.2.13, LS.3.2, LS.3.3



## How Many Bears Can Live in This Forest?

**Location:** In or out of park.

**Objective:** This is a Project WILD activity. Students will be able to define a limiting factor and describe how these factors affect animal populations.

**Grades:** 4-12

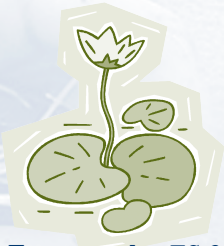
**Length:** 30 minutes

**Special Conditions:** Requires playing field or gymnasium. Best with groups of 10 or more.

**K-4 Frameworks:** ES.2.5, ES.3.3, LS.2.1, LS.2.3, LS.2.4, LS.2.5, LS.2.7, LS.2.8, LS.2.9, LS.2.10

**5-8 Frameworks:** LS.2.4, LS.2.5, LS.2.7, LS.2.8, LS.2.9, LS.2.11, LS.2.12

**9-12 Frameworks:** ES.1.6, ES.3.2, ES.3.3, LS.2.4, LS.2.6, LS.2.13, LS.3.2, LS.3.3



## Kayak Tour of Cane Creek Lake\*

**Location:** In park.

**Objective:** Students will learn about the history of Cane Creek Lake and lake ecology.

**Grades:** 3-12

**Length:** 1½ - 2 hours

**Special Conditions:** Maximum 20 people per tour.

**K-4 Frameworks:** ES.3.1, ES.3.2, ES.3.3, LS.3.3

**5-8 Frameworks:** ES.1.1, ES.3.8, LS.2.3, LS.2.5, LS.2.7, LS.2.8, LS.2.9, LS.2.11, LS.2.12

**9-12 Frameworks:** LS.2.13, LS.2.15



## Mammals of Arkansas

**Location:** In or out of Park.

**Objective:** Students will learn what characteristics make mammals unique. They will become familiar with a variety of mammals and have the opportunity to view and touch skins and skulls of different Arkansas mammals. This program can be customized with a variety of optional activities such as “The Great Mammal Quiz” or “Animal Tracks,” an art activity.

**Grades:** K-8

**Length:** 20 minutes (basic program) 30 – 60 minutes (with optional activities)

**Special Conditions:** Optional activities are dependent on grade level and size of group. Contact a park interpreter to discuss your options.

**K-4 Frameworks:** LS.2.1, LS.2.3, LS.2.4, LS.2.5, LS.2.6, LS.2.7, LS.2.8, LS.3.3

**5-8 Frameworks:** LS.2.3, LS.2.4, LS.2.5, LS.2.7, LS.2.8, LS.2.9



## Migration Headache

**Location:** In or out of park.

**Objective:** This is a Project WILD activity. Students will learn about limiting factors affecting habitats and populations of migrating water birds. Students will be able to predict the effects of these limiting factors, describe the effects of habitat loss and degradation on populations and make inferences about the importance of suitable habitat.

**Grades:** 4-12

**Length:** 30 minutes

**Special Conditions:** Requires playing field or gymnasium.

**K-4 Frameworks:** ES.2.5, ES.3.2, ES.3.3, LS.2.1, LS.2.4, LS.2.5, LS.2.7, LS.2.8, LS.2.9, LS.2.10, LS.3.3

**5-8 Frameworks:** ES.3.8, LS.2.4, LS.2.5, LS.2.7, LS.2.8, LS.2.9, LS.2.11, LS.2.12

**9-12 Frameworks:** ES.1.6, ES.3.2, ES.3.3, LS.2.4, LS.2.6, LS.2.11, LS.2.13, LS.3.2, LS.3.3



## Tarantulas in Arkansas

**Location:** In or out of park.

**Objective:** Students will learn about the life history of tarantulas in Arkansas.

**Grades:** K-12

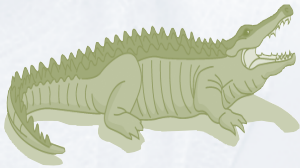
**Length:** 20 minutes (basic program) 30 – 60 minutes (with optional activities)

**Special Conditions:** Optional activities are dependent on grade level and size of group. Contact a park interpreter to discuss your options.

**K-4 Frameworks:** LS.2.1, LS.2.3, LS.2.4, LS.2.5, LS.2.7, LS.2.8, LS.2.9

**5-8 Frameworks:** LS.2.3, LS.2.4, LS.2.5, LS.2.8

**9-12 Frameworks:** LS.2.4, LS.2.10, LS.2.13



## Tour the Visitor Center

**Location:** In park.

**Objective:** Students will tour the visitor center and discover a variety of animals, skins, skulls and other natural artifacts. Animals are rotated frequently to ensure minimal time in captivity; however, we usually have at least one snake, alligator or turtle.

**Grades:** K-8

**Length:** 20 minutes

**Special Conditions:** Limited to 15 students.

**K-4 Frameworks:** ES.3.3, LS.2.1, LS.2.3, LS.2.4, LS.2.5, LS.2.7, LS.2.8, LS.2.10

**5-8 Frameworks:** LS.2.3, LS.2.4, LS.2.5, LS.2.7, LS.2.8, LS.2.9, LS.2.12

**9-12 Frameworks:** LS.2.4, LS.2.6



## Traveling Education Nature Trailer

**An Overnight Camping and Educational Activity**

Arkansas State Park's Traveling Educational Nature Trailer (TENT) is a mobile educational center providing camping and outdoor experiences for students. This trailer is loaded with camping gear, outdoor activity equipment and educational materials for up to 25 people. If your students would enjoy camping in a state park, learning how to set-up camp and outdoor cooking, then the TENT is for you.

There is a small fee for use of the TENT. This cost is dependent on food and supplies utilized in order to create a custom camping experience for your group. To reserve the TENT contact Cane Creek State Park. Please make your reservations in advance and have optional dates available. Reservations are based upon availability.

# Appendix

## K-4 Frameworks:

- ES.2.1 Recognize and classify different types of Earth materials.
- ES.2.5 Investigate seasonal changes in weather and factors which affect weather conditions.
- ES.3.1 Understand the varied uses of water.
- ES.3.2 Describe uses and conservation of materials taken from the Earth.
- ES.3.3 Identify the effects humans have on the environment.
- LS.1.1 Utilize the scientific method to investigate life sciences.
- LS.2.1 Identify and compare characteristics of living and nonliving things.
- LS.2.3 Identify and investigate the functions of body systems in organisms.
- LS.2.4 Recognize patterns and characteristics of organisms.
- LS.2.5 Explore the life cycles of organisms.
- LS.2.6 Name some common animals that no longer exist.
- LS.2.7 Understand that offspring are similar to their parents.
- LS.2.8 Identify the features of plants and animals that enable them to live in different environments.
- LS.2.9 Define and describe a food chain and food web.
- LS.2.10 Understand that organisms are interdependent.
- LS.3.3 Identify that humans change environments in ways that can be beneficial or detrimental for themselves and other organisms.

## 5-8 Frameworks:

- ES.1.1 Identify the components of Earth (water, rocks and air) and their properties.
- ES.1.3 Generate conclusions based on evidence acquired through experimentation.
- ES.3.1 Design and conduct scientific investigations to answer different kinds of questions.
- ES.3.8 Illustrate the positive and negative effects of human use of natural resources on Earth.
- LS.1.1 Recognize that science deals only with inquiry about the natural world.
- LS.1.3 Conduct investigative science through use of the scientific method.
- LS.1.4 Generate conclusions based on evidence acquired through experimentation.
- LS.2.3 Arrange organisms into groups according to similarities and differences.
- LS.2.4 Identify the requirements for living organisms.
- LS.2.5 Explain life cycles of various organisms.
- LS.2.7 Describe how heredity and environment influence/determine characteristics of an organism.
- LS.2.8 Recognize that reproduction is a characteristic of all living organisms and is essential to the continuation of life.
- LS.2.9 Explain how physical and/or behavioral characteristics of organisms help them to adapt and survive in their environments.
- LS.2.11 Analyze ecosystems in terms of population relationships, food webs, energy flow and biotic succession.
- LS.2.12 Evaluate human impact on the environment.
- LS.3.1 Design and conduct life science investigations to answer different kinds of questions.

## 9-12 Frameworks:

- ES.1.6 Formulate valid conclusions.
- ES.3.2 Evaluate long range plans for resource use and by-product disposal in terms of environmental, economic and political impact (human activities v. resource quality).
- ES.3.3 Assess current world issues applying scientific themes (population growth, climate changes, ozone depletion, natural resource use, public policy, etc...).
- LS.2.4 Compare genetic variations observed in plants and animals (adaptations and mutations).
- LS.2.6 Compare and contrast life cycles of familiar organisms (sexual, asexual, metamorphosis and alternation of generations).
- LS.2.10 Interpret interactions among organisms exhibiting predation, parasitism, commensalism and mutualism.
- LS.2.11 Investigate and formulate solutions to problems resulting from human impact on the environment.
- LS.2.13 Investigate and explain the interactions in an ecosystem including food chains, food webs and food pyramids.
- LS.2.15 Compare cells from different parts of plants including roots, stems and leaves to show specialization of structure and function.
- LS.3.2 Evaluate long range plans for resource use and by-product disposal in terms of environmental, economic and political impact.
- LS.3.3 Assess current world issues applying scientific themes (population growth, climate changes, ozone depletion, natural resource use, public policy, etc...).





# Cane Creek State Park School Group Reservation Form

phone: (870) 628-4714 fax: (870) 628-3611



### Contact Information:

School Name: \_\_\_\_\_ Contact Person: \_\_\_\_\_

School Address \_\_\_\_\_ City: \_\_\_\_\_ State: \_\_\_\_\_ ZIP: \_\_\_\_\_

Daytime Phone: \_\_\_\_\_ Fax: \_\_\_\_\_ Email: \_\_\_\_\_

Number of Students: \_\_\_\_\_ Number of Teachers/Chaperones: \_\_\_\_\_

### Dates:

1<sup>st</sup> Choice: \_\_\_\_\_ 2<sup>nd</sup> Choice: \_\_\_\_\_ 3<sup>rd</sup> Choice: \_\_\_\_\_

Arrival Time: \_\_\_\_\_ Departure Time: \_\_\_\_\_

### Please check one:

- I would like an In Park Program.
- I would like an Out of Park Program.

### Please check the programs for registration:

- Animal Programs
- Delta View Trail Hike
- Earthworm Motel
- Hawks, Shrews and Grasshoppers
- How Many Bears Can Live in this Forest?
- Kayak Tour of Cane Creek Lake (fee for activity)
- Mammals of Arkansas
- Migration Headache
- Tarantulas of Arkansas
- Tour the Visitor Center

If you are interested in a program not listed above please list your topic here: \_\_\_\_\_

Are you interested in reserving the TENT trailer?  Yes  No

Do any students require special accommodations?  Yes  No

### Please return this form to:

Park Interpreter  
Cane Creek State Park,  
50 State Park Road  
Star City, AR 71667

# Cane Creek State Park Grab Bags

\$1.00 Grab Bag

Balloon Yo-Yo  
Sweet and Sour Sucker

\$2.00 Grab Bag

Cane Creek Pencil  
Arkansas Post Card  
Small Butterfly or Baby Turtle (toy)  
Sweet and Sour Sucker

\$4.00 Grab Bag

Cane Creek Pencil  
Arkansas Post Card  
Coiled Rubber Snake (toy)  
Learn about Book  
Rock Candy Sucker

\$6.00 Grab Bag

Cane Creek Pencil  
Arkansas Post Card  
Learn about Book  
Geode or Rock/Mineral  
Wacky Whirler  
Rock Candy Sucker

\$12.00 For the Birds

Peterson First Field Guide  
Bird Caller  
Cane Creek Magnet  
Wrist Compass  
Rock Candy Sucker

\$20.00 Teachers Grab Bag

Cane Creek Magnet  
Cane Creek Coffee Mug  
Large Peterson Field Guide

\*\*No substitutions, exchanges, or refunds.

\*\*We reserve the right to alter gift bag contents based on product availability.

## Cane Creek State Park

50 State Park Road  
Star City, AR 71667  
Phone: 870-628-4714  
E-mail: [Canecreek@arkansas.com](mailto:Canecreek@arkansas.com)  
[www.ArkansasStateParks.com](http://www.ArkansasStateParks.com)

Cut along dotted line

School \_\_\_\_\_ Teacher \_\_\_\_\_

Student Name \_\_\_\_\_

_____ x\$ 1 Grab Bag= \$ _____	Total Amount:
_____ x\$ 2 Grab Bag= \$ _____	Cash: \$ _____
_____ x\$ 4 Grab Bag= \$ _____	Check: # _____
_____ x\$ 6 Grab Bag= \$ _____	
_____ x\$12 Grab Bag= \$ _____	
_____ x\$20 Grab Bag= \$ _____	

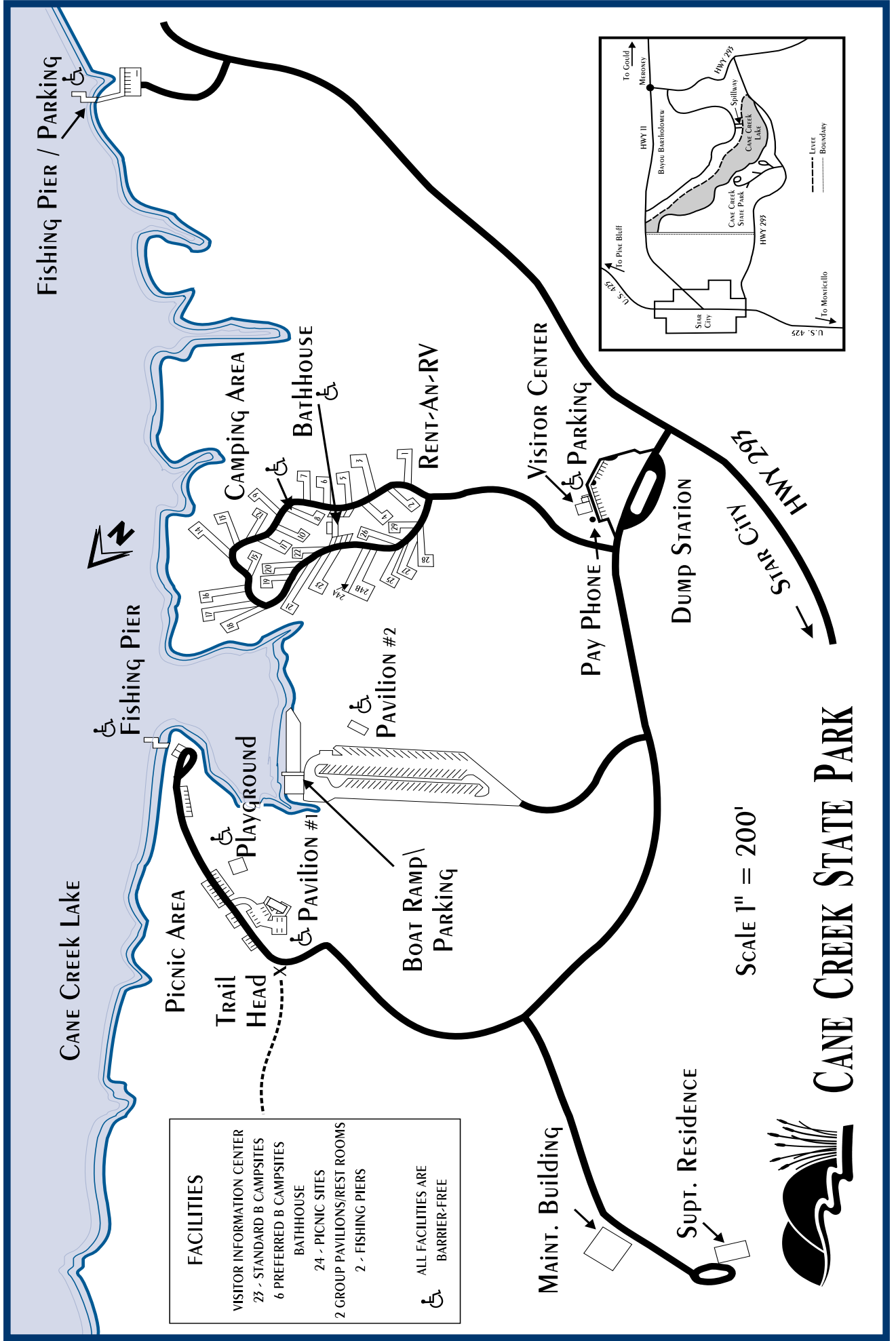


Return this form and payment to your teacher promptly.

Cane Creek requests that all forms be gathered and sent by your teacher to the park at least 2 weeks in advance of your reservation date.

\*\*Please, Correct Change Only!

# Cane Creek State Park Map





## *Cane Creek State Park*

50 State Park Road, Star City, AR 71667

Telephone: (870) 628-4714 Fax: (870) 628-3611 Email: [canecreek@arkansas.com](mailto:canecreek@arkansas.com)

[www.ArkansasStateParks.com](http://www.ArkansasStateParks.com)