

## Hunting

There is no hunting allowed on property managed by the Arkansas State Parks. However, hunting is allowed on property managed by the Arkansas Game & Fish Commission, and their regulations are in effect (miles 7.5 to 13). For safety, it is recommended that hunter-orange be worn during hunting seasons on the entire trail.

## Trailhead & Access Points

The main trailhead for this 15.5-mile trail is located in the Cane Creek State Park picnic area. However, other access points with parking areas are available. The state park has access points at the visitor center and at fishing pier #3 (mile 14.3). There are two access points on Arkansas Game & Fish Commission property along the Cane Creek Lake levee at fishing pier #1 (mile 10) and fishing pier #4 (mile 12.1).

## Trail Markings

In the wooded areas, the trail is marked with a single red blaze on each side of trees facing the trail; you may hike or ride the trail in either direction. The following comments are written as if you were traveling in a clockwise manner from the main trailhead at the state park picnic area.

- The first 1.25 miles of the trail are blazed in red and yellow due to the Cane Creek Lake Trail and the park's 2.5-mile Delta View Trail loop sharing this section.
- Directional signs are placed at critical turning points.
- Mile markers are placed at each half-mile interval.
- No trail blazes or mile markers are provided or required on the 4.6 miles of trail on the Cane Creek Lake levee (miles 8.5 to 13.1).
- Trail follows Cane Creek Road for 1.3 mile (miles 13.1 to 14.3). Be cautious of vehicular traffic.

## Conclusion

The Cane Creek Lake Trail offers wonderful opportunities to observe a wide variety of birds, plants, animals, geological formations, that occur where these two natural landforms meet. Take your time when hiking or biking and take in the natural beauty of this trail.

We would like to stress that your help is needed to protect the parkland that is yours. If we each leave no trace, it is possible for the thousands of people that travel our trails to leave this natural area just as they found it: a remarkable backcountry with a single path woven through it.



For more information, contact:

**Cane Creek State Park**

50 State Park Road  
Star City, AR 71667

(870) 628-4714

canecreek@arkansas.com



See our websites:

[www.ArkansasStateParks.com](http://www.ArkansasStateParks.com)

[www.AdventureStateParks.com](http://www.AdventureStateParks.com)

# HIKING & Biking



@ CANE CREEK  
Lake Trail

## Introduction

*Here, as you experience the meeting of two natural landscapes, you become aware that life is shaped by land and people.*

Rolling hills, thick hardwood and pine forests, mountain bikes and backpackers are not images that normally come to mind when thinking of southeast Arkansas. Yet these are characteristics of the Cane Creek Lake Trail.

On the dividing line separating two different ecological and geological worlds, the trail provides the opportunity to explore both the towering timberlands of the West Gulf Coastal Plain and the flooded forests of the Mississippi Alluvial Plain, better known as the Delta.

Exploring Cane Creek Lake Trail by foot or mountain bike, you will traverse a maze of small creeks that etch their way along deep draws between the steeply sloping ridges of a thick forest interspersed with dogwoods. Then, as you begin to revise your preconceived picture of southeast Arkansas, the trail bends around to open views of a lake filled with tall snags, water lilies, lotus blossoms and, bald cypress brakes. The soundtrack changes from babbling brooks to the jug-a-rum call of a bullfrog. The Delta is here after all.

## Development of the Trail

This 15.5-mile multi-use trail was created through a partnership between Arkansas State Parks, Arkansas Game and Fish Commission, and the Arkansas Highway and Transportation Department. It provides hiking and mountain biking in the natural and remarkably diverse backcountry surrounding Cane Creek Lake. Funded by the Arkansas Highway and Transportation Department's Trails Grant Program, the trail was built by volunteers and Arkansas State Park staff. More than 550 volunteers participated in the construction, many of those were AmeriCorps and Boy Scout organizations.

## Trail Regulations

To preserve the beauty of the trail and surrounding environment we ask that you obey the following regulations:

- All park trails are limited to foot and non-motorized bicycles (no ATV's or horses).
- Stay on the designated trail by observing the red trail blazes and signs.
- Be courteous to all trail users - bikers & hikers.
- It is unlawful to disturb or remove any plants, animals, or geological formations.
- No alcoholic beverages or glass containers are allowed on trails.
- Pets must be on a leash and under control at all times.
- Keep the trail clean. Pick up litter you see along the trail.
- Campfires can be built only in the Cane Creek Lake Trail camp. (An overnight camping permit is required).
- Hikers, when bikers approach please step off the trail to allow safe passage.
- Always control bikes in a safe manner.
- The construction of ramps, jumping obstacles, and trick riding are prohibited.
- In case of emergency, contact park personnel or 911.

## Suggestions for All Trail Users

This is a 15.5-mile trail. Plan for your endurance level, time, equipment, and supplies. Considering an average walking speed of 2-miles per hour, this trail will require a minimum of 8 hours to complete with few stops. Plan carefully for this long trail!

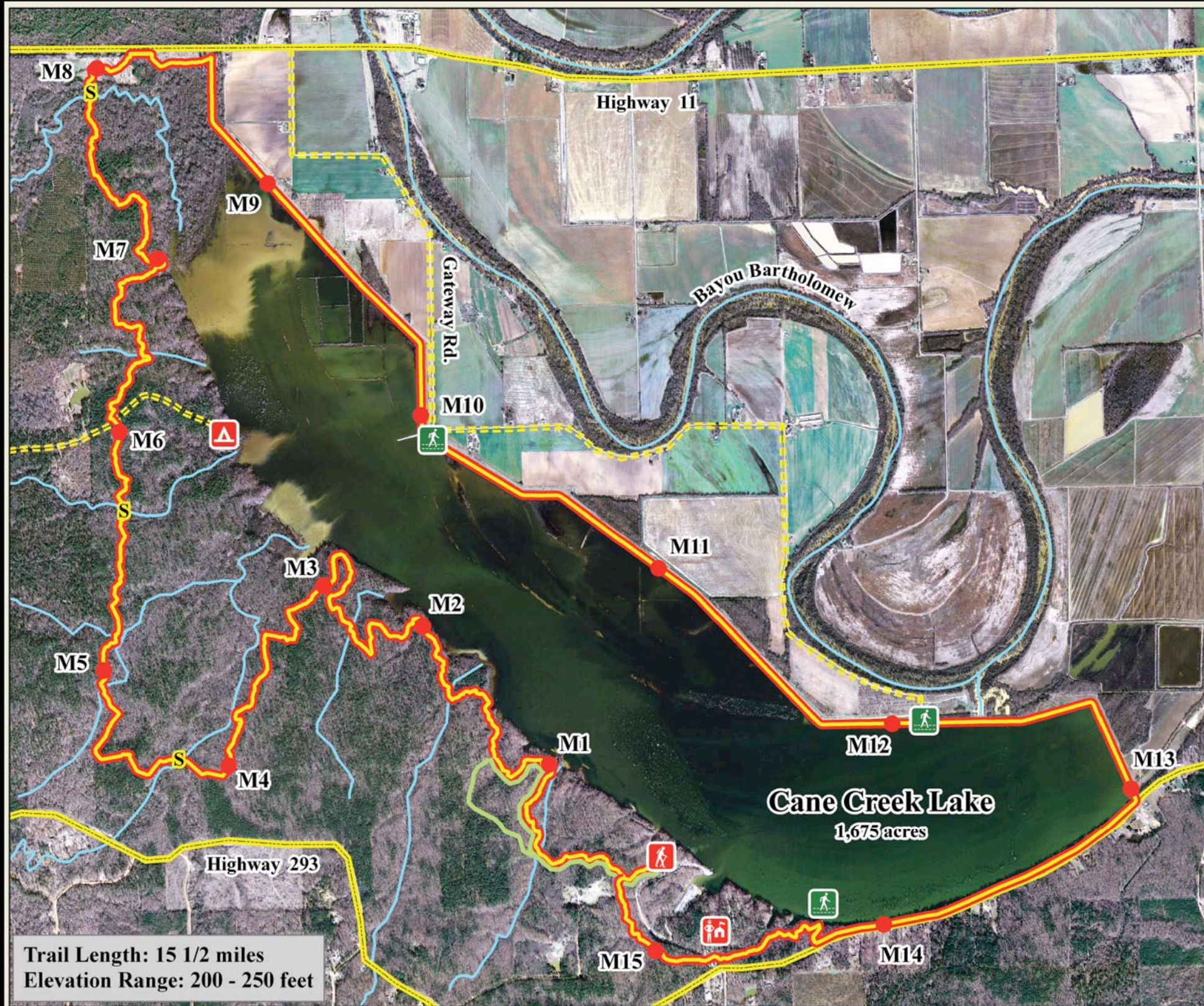
- Call ahead before you travel to the park to check for possible trail closures.
- Tell someone where you are going and when you expect to return.
- Sign in and out at the trailhead.
- Use a map, compass, and hiking staff.
- Take ample water and snacks.
- Monitor weather and dress appropriately.

- Wear hiking boots or thick-soled sneakers.
- Watch for poison ivy along the trail. It can be recognized by its three leaflets, reddish leaf stem, and hairy vine.
- It is highly recommended that cyclists wear ASTM/SEI approved protective headgear.
- Cyclist should use caution in regard to speed. There are several quick descents that go into turns and bridges. Many timber bridges have ramps that are not meant for jumping.
- Tick, chigger, and snake season is generally April through September. Wear insect repellent and check for ticks frequently. If you encounter a snake, give it room and move around it. Snakes are protected with in state parks.
- No trail use after sunset without state park permission. If you become lost after sunset you will be easier to find if you stay where you are.

## Backpacker Information

- Camping is only allowed at Cane Creek Lake Trail camp (after mile 6, then east .5 miles). A required camping permit is available at the state park visitor center.
- Campfires are only allowed in designated fire rings at the Cane Creek Lake Trail camp.
- Although the trail has several creeks, it is not unusual for them to be dry. Cane Creek Lake and a small pond near mile marker 3 are steady water sources. Purify all water before drinking.
- Bury human waste 6-8 inches deep and at least 200 feet from the trail or a water source.
- If you pack it in, you are required to pack it out. Inspect your campsite and rest areas for trash or spilled foods. Littering or burying trash is prohibited.
- Avoid washing directly in water sources and never dump food, grease, or detergents in them. To wash yourself or your dishes, carry water 200 feet away from water source or trail and use small amounts of biodegradable soap.

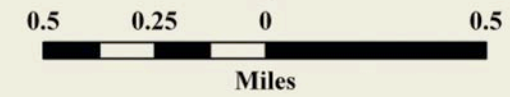




Trail Length: 15 1/2 miles  
Elevation Range: 200 - 250 feet

# Cane Creek Lake Trail Guide

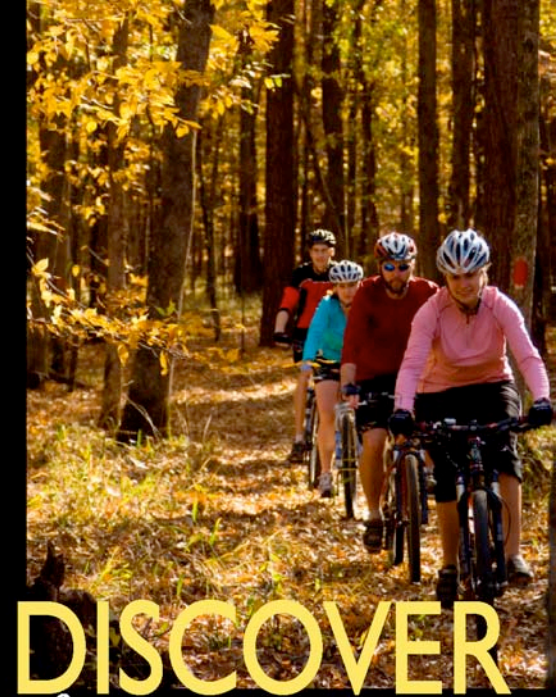
- Visitor Center
- Trailhead
- Cane Creek Trail
- Delta View Trail
- M1** Mile Post
- S** Suspension Bridge
- Access Points
- Permit Camping
- Paved Road
- Gravel Road
- Major Waterways



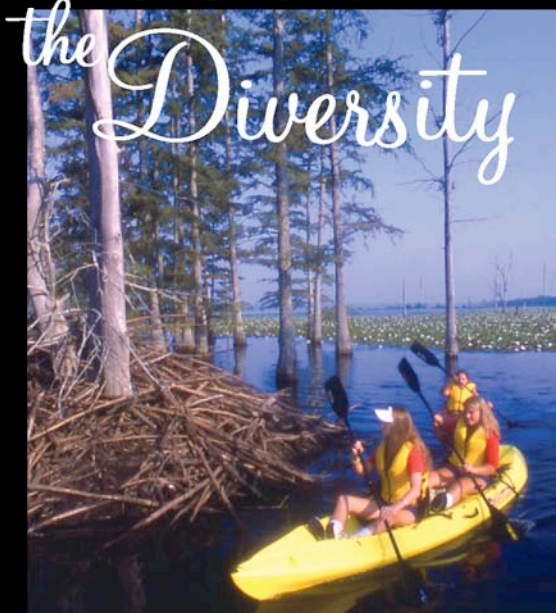
This map was created by the Spatial Analysis Laboratory (SAL) in the School of Forest Resources, University of Arkansas at Monticello (UAM), Arkansas.

Data Sources: The Color Aerial Image was taken in the winter of 2006 and has a one-meter spatial resolution. The data for the trail was collected with a GPS receiver by Robert Weih, Robby Weih, and Mike Wilson in 2008.

Notice: To preserve scenic beauty and ecology, fences, and warning signs have not been installed in some park locations. Caution and supervision of your children are required while visiting these areas.



DISCOVER  
the Diversity



@ Cane Creek  
STATE PARK

