



Dear Friends

This March, we are pleased to feature *Beauty In The Journey*, a showcase of new works by renown Utah based painter **Robert Duncan**. The show brings together a collection of recent paintings that touch on a variety of subjects which have long inspired Robert including traditional western scenes, rural and figurative works as well as wildlife subjects.

An aspiring artist from an early age, it was Robert's childhood summers on his grandfather's Wyoming cattle ranch that would deeply instill in him a love of nature and rural life that continues to be the central focus of his life and art today. Many of you may recall Robert's time as an award-winning member of the Cowboy Artists of America organization back in the early 1980's. From there, he would move on to pursue other subjects close to his heart: namely rural scenes inspired by his home state of Utah as well as subjects inspired by his travels throughout the western United States, New England and Europe. Of his newest collection of work Robert notes, "As I've planned these paintings, I've been thinking a lot about the power of beauty in our lives and how it is all around us in so many simple moments if we will just open our eyes and let it heal us and fill us with gratitude for this amazing world we live in." I hope you have the opportunity to stop by the gallery during this show and see these remarkable paintings in person!

Jackson Hole is well known for attracting all manner of wildlife enthusiasts including artists, writers, photographers, and nature buffs. With this in mind, we are pleased to take a walk on the wild side as we present our annual **Wildlife Discovery** show. Many of the country's most noted wildlife painters and sculptors participate in the event, providing an eclectic mixture of wildlife and nature subjects. We continue to see wildlife art as a dominant



Robert Duncan, *A Welcome Sight*, oil on linen, 22 x 28 inches, \$8,500



Robert Duncan, *Winter's Coming*, oil on linen, 36 x 48 inches, \$25,000



Dustin Van Wechel, *A Winter Fellowship*, oil on canvas, 24 x 30 inches, \$7,500

genre in the art world. Given the heightened awareness of global warming and fragile ecosystems, the genre has taken on a whole new dimension, as the artists strive not only to create an esthetically pleasing image, but to have it serve as an educational tool to bring more awareness to conservation. I hope that these works serve to inspire an even deeper appreciation for our relationship with nature.

Looking ahead, we have a full schedule of shows for 2019 and we look forward to assisting you whether in person or via our online platform.

Maryvonne Leshe
Managing Partner



ROBERT DUNCAN | BEAUTY IN THE JOURNEY

MARCH 4 - MARCH 16, 2019

Open House: Saturday, March 16, 4-6pm



The Buried Trail, oil on linen, 30 x 40 inches, \$22,500



Iced Over, oil on linen, 36 x 48 inches, \$29,500

MARCH 4 - MARCH 16, 2019
Open House: Saturday, March 16, 4-6pm



Young and Strong, oil on linen, 30 x 40 inches, \$22,500



Through the Pines, oil on linen, 36 x 48 inches, \$29,500

ROBERT DUNCAN | BEAUTY IN THE JOURNEY

MARCH 4 - MARCH 16, 2019

Open House: Saturday, March 16, 4-6pm



Her Quiet Place, oil on linen, 28 x 22 inches, \$8,000



Spread Your Wings, oil on linen, 22 x 28 inches, \$8,000



The New Mother, oil on canvas, 24 x 36 inches, \$12,000

MARCH 4 - MARCH 16, 2019
Open House: Saturday, March 16, 4-6pm



A Sturdy Partner, oil on linen, 22 x 28 inches, \$8,000



Silent Passing, oil on linen, 24 x 36 inches, \$10,500

WILDLIFE DISCOVERY

MARCH 18 - MARCH 30, 2019



Bonnie Marris, *Above the Clouds*, oil on canvas, 24 x 48 inches, \$18,000



Dustin Van Wechel, *Make Way*, oil on canvas, 24 x 36 inches, \$9,000

MARCH 18 - MARCH 30, 2019



Bradley Schmehl, *Patriarch*, oil on canvas, 24 x 48 inches, \$18,200



Bradley Schmehl, *Secrets of the Forest*, oil on canvas, 24 x 36 inches, \$10,500

WILDLIFE DISCOVERY

MARCH 18 - MARCH 30, 2019



Ezra Tucker, *Little Scarlet*, acrylic on board, 15 x 40 inches, \$14,000



Ezra Tucker, *Peeping Tom*, acrylic on board, 15 x 40 inches, \$18,000



Ezra Tucker, *Cozy Companions*, acrylic on board, 12 x 30 inches, \$12,000

MARCH 18 - MARCH 30, 2019

Shawn Gould
Stellar Delight
acrylic on board,
16 x 12 inches
\$1,600



Shawn Gould, *Little Dipper*, acrylic on board, 9 x 12 inches, \$950



Kent Ullberg, *Bonding*, stainless steel, ed. of 12, 21 x 13 1/2 x 7 inches, \$12,000



Sarah Woods, *Softly Snowing*, oil on board, 24 x 8 inches, \$2,000

WILDLIFE DISCOVERY

MARCH 18 - MARCH 30, 2019



Shawn Gould, *Lifblood of the River*, acrylic on board, 20 x 24 inches, \$3,700



Shawn Gould, *Open Country*, acrylic on board, 24 x 30 inches, \$5,400



Shawn Gould, *Mirror Mirror*, acrylic on board, 24 x 36 inches, \$6,400

MARCH 18 - MARCH 30, 2019



Ralph Oberg, *The King's Crown*, oil on mounted linen, 34 x 48 inches, \$24,000



Ralph Oberg, *Winter Sun*, oil on mounted linen, 20 x 24 inches, \$7,400



Ralph Oberg, *Coming Through the Willows*, oil on mounted linen, 24 x 30 inches, \$11,500

WILDLIFE DISCOVERY

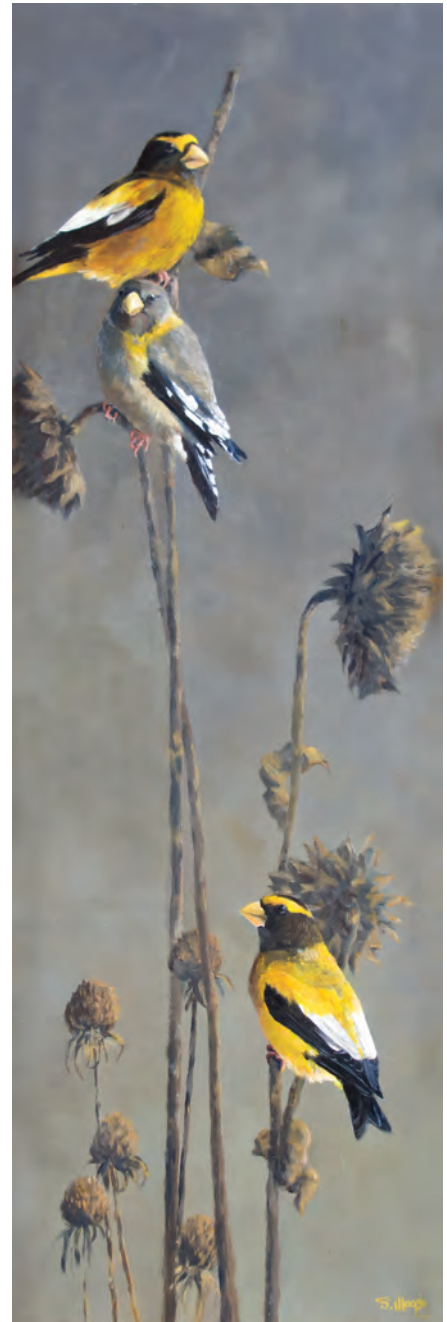
MARCH 18 - MARCH 30, 2019



Sarah Woods, *The Learning Tree*, oil on canvas, 34 x 32 inches, \$9,500



Sarah Woods, *Wyoming May Baby*, oil on board, 12 x 16 inches, \$2,000



Sarah Woods, *October Evening*, oil on board, 30 x 10 inches, \$2,600

MARCH 18 - MARCH 30, 2019



Shawn Gould, *Early Snow*, acrylic, 18 x 24 inches, \$3,400



Mick Doellinger, *Out of Nowhere*, bronze ed. of 25, 19 ½ x 28 x 9 inches, \$5,300



Mick Doellinger, *Loud Mouth*, bronze ed. of 30, 12 ½ x 13 ½ x 7 inches, \$3,300



Mick Doellinger, *Incoming*, bronze ed. of 25, 29 ½ x 17 ½ x 13 ½ inches, \$8,300

WILDLIFE DISCOVERY

MARCH 18 - MARCH 30, 2019



Lindsay Scott, *Cool Red*, colored pencil, 11 ½ x 25 inches, \$7,500



Stefan Savides, *Flower Child*, bronze ed. of 35, 21 x 7 x 6 inches, \$2,100



Stefan Savides, *Pins and Curls*, bronze ed. of 16, 33 x 33 x 25 ½ inches, \$12,000

MARCH 18 - MARCH 30, 2019



Kyle Sims, *Willow Run*, oil on canvas, 18 x 38 inches, \$9,500



Ken Carlson, *Coral Ridge - Mule Deer*, oil on board, 20 x 30 inches, \$28,000

WILDLIFE DISCOVERY

MARCH 18 - MARCH 30, 2019



Bruce Lawes, *Searching the Shadows*, oil on linen, 24 x 36 inches, \$12,950



Margery Torrey, *Hark*, bronze ed. of 35, 20 ½ x 29 x 10 inches, \$8,500

 **TRAILSIDE**
GALLERIES

130 E. BROADWAY | PO BOX 1149 | JACKSON, WYOMING 83001
JACKSON: (307) 733-3186 | SCOTTSDALE: (480) 945-7751
TRAILSIDEGALLERIES.COM | INFO@TRAILSIDEGALLERIES.COM