



Oak Leaf Trail Zip Line Sink Hole

WisDOT ID 2967-09-02/72



Milwaukee County Department of Administrative Services

Milwaukee County Parks

Recorded May 7th, 2021

PROJECT TEAM

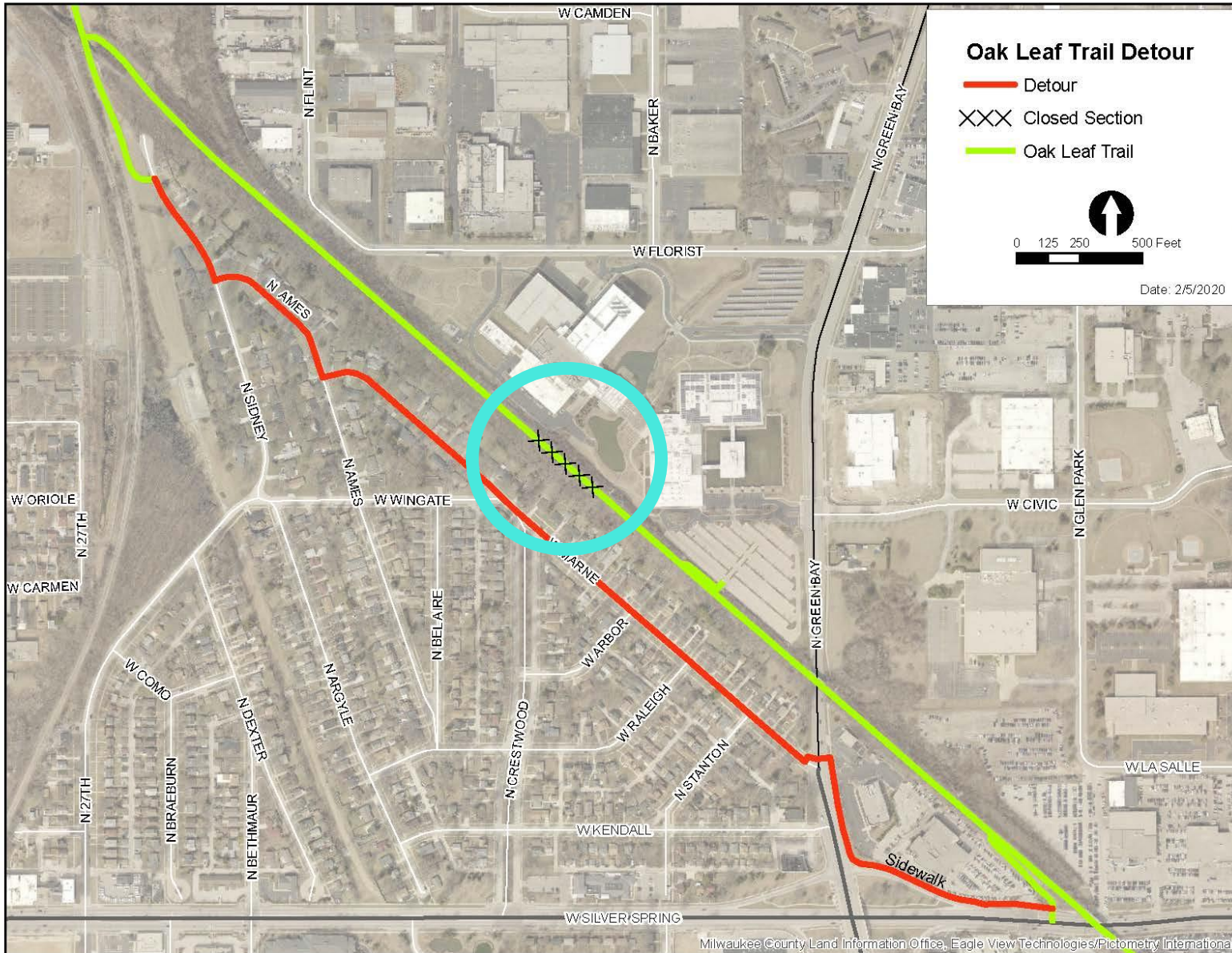
- Michael Marlin, PLA, CPSI – Landscape Architect, Milwaukee County Parks
- Karl Stave, P.E. – Civil Engineer, Milwaukee County Architecture, Engineering & Environmental Services
- Jessica Wineberg – Trails Coordinator, Milwaukee County Parks
- Yan Nenaydykh, P.E. – Bloom Consultants

PROJECT PARTNERS

- Milwaukee County Parks
- Milwaukee County Architecture, Engineering & Environmental Services
- Wisconsin Department of Transportation Local Program (WisDOT)
 - *WisDOT ID 2967-09-02/72*
- Wisconsin Department of Natural Resources
- Friends of Milwaukee County Trails
- Johnson Controls
- Bloom Consultants



PROJECT LOCATION



Location Description

The sink hole is located on the Zip Line of the Oak Leaf Trail north of Silver Spring Road and west of Green Bay Road in the City of Glendale.

The Zip Line is one of the most popular segments of the Oak Leaf Trail (OLT) with average usership of over 350,000 trips a year.



PROJECT BACKGROUND

Why has the trail been closed?

In late 2018, a sink hole formed on the Oak Leaf Trail, directly over a failing stone arch and culvert. This posed safety hazards to trail users and led to eventual full trail closure.

Portions of the stone arch culvert were constructed in the late 1800's, and a concrete section of the arch was constructed in 1911. Failures in the stone arch system have caused movement of earth behind the arch wall, leading to the development of the sink hole and making for unsafe trail conditions.

Why has it taken so long?

Excavating and replacing an active culvert system requires significant funding along with WisDOT and WDNR reviews. Grant requests and local fundraising efforts have been pursued over the past two years, now allowing engineering, bidding, and construction to proceed.



Current Conditions





Current Conditions

Examples of the stone arch cracking, shifting, and settling.



PROJECT SCOPE

- The project will remove the old stone arch and will leave the existing concrete portion of the archway.
- A new corrugated metal pipe will be installed to convey flow of Crestwood Creek, and the culvert will be backfilled.
- After the culvert issues are addressed, the trail will be restored.
- Areas of the embankment disturbed during construction will be restored with trees, shrubs, and native vegetation.



PROJECT BUDGET & TIMELINE

Total project budget: \$708,063

- WisDOT Transportation Alternatives Program (TAP) Grant: **\$530,815**
- Wisconsin DNR Stewardship Grant: **\$45,000**
- Friends of Milwaukee County Trails “Go Fund Me” Campaign: **\$18,225**
- Milwaukee County: **\$114,023**

Special thanks to
generous donors and
grantors!

Estimated Project Timeline*



**Project timeline and funding are subject to change.*



WHAT TO EXPECT

Neighbors and Area Homeowners:

- The site will be an active construction site from September 2021 to late 2021 (exact timeline TBD).
- Re-vegetation of the embankments will continue in 2022.

Trail Users:

- Continue to follow detour through construction until the trail reopening.

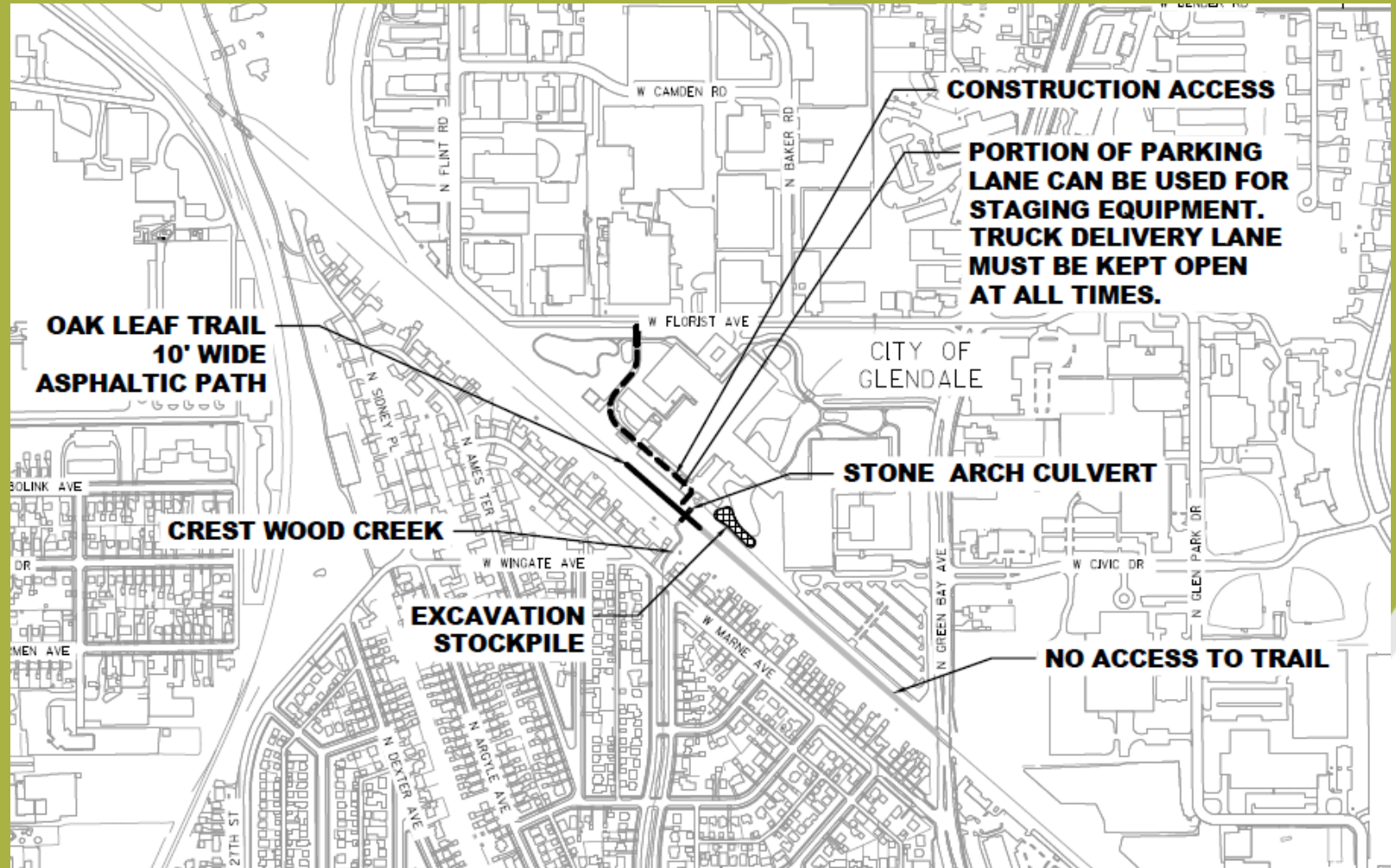


IMAGE CREDIT: MILWAUKEE COUNTY & BLOOM CONSULTANTS



**Public comment period is open until Friday, May 28th at
5PM.**

[Comment form available online.](#)

**Remember to download the Milwaukee Parks Explorer App!
Find park and trail maps, track your park visits,
upload photos, and more!**

mkecountyparks.com

