

YOUR VENUE GUIDE TO

ORCHESTRA



HALL



# ORCHESTRA HALL

## A PREMIER VENUE FOR MEETINGS AND EVENTS

Located in downtown Minneapolis, Orchestra Hall is one of Minnesota's premier performing arts and special events venues. Whether you are planning a grand event or an intimate gathering, Orchestra Hall offers a variety of spaces to fit your event's size and style.

Performances, conferences, weddings, business meetings, educational events, non-profit fundraisers, holiday parties and seminars can all be handled with flair. With our downtown location, flawless service and personalized planning, we can easily turn your next event into a first-rate production.

## VENUE OVERVIEW

Orchestra Hall is best known for its world-renowned acoustics, bringing world-class music, performing arts and other special events to the Midwest.

The venue offers seven dynamic indoor and private outdoor spaces ideal for performances, events and celebrations of varying sizes.

Accessible parking and hotels are conveniently located adjacent to the building.

The Minneapolis Skyway System connects Orchestra Hall to nearby hotels, the Minneapolis Convention Center, and options for downtown dining and shopping.

Our energetic, attentive team of event planning professionals have organized and executed all types of occasions, so you can rest assured that you are in capable, caring hands.

In 2019, Orchestra Hall became the first performing arts center in the country to achieve LEED v4 O+M Silver certification by implementing practices in sustainability.



# OVERVIEW OF AVAILABLE SPACES

## AUDITORIUM

pg. 3

Auditorium Square Footage: 8,775  
Stage Square Footage: 2,520

### CAPACITIES

Main Floor: 1,224  
Balcony A: 299  
Balcony B: 285  
Balcony C: 281  
Total Maximum Capacity: 2,089

## N. BUD GROSSMAN

MEZZANINE pg. 7

Square Footage: 2,785  
Ceiling Height: 30'

### CAPACITIES

Seated Dining: 100  
Standing Reception: 250  
Theater Seating: 120

## ROBERTA MANN

GRAND FOYER pg. 4

Square Footage: 7,874  
Ceiling Height: Varies

### CAPACITIES

Seated Dining: 300  
Standing Reception: 1,316  
Theater Seating: N/A

## LINDAHL

TERRACE pg. 7

Square Footage: 1,160

### CAPACITIES

Seated Dining: 56  
Standing Reception: 151

## TARGET

ATRIUM pg. 5

Square Footage: 2,650  
Ceiling Height: 26'2"

### CAPACITIES

Seated Dining: 168  
Standing Reception: 300  
Theater Seating:  
226 – film, small recital  
164 – small ensemble  
132 – youth orchestra

## KATHY AND CHARLIE

CUNNINGHAM GREEN  
ROOM pg. 8

Square Footage: 1,050  
Ceiling Height: 9'1"

### CAPACITIES

Seated Dining: 48  
Standing Reception: 68  
Theater Seating: 64

## CARGILL

COMMONS pg. 6

Square Footage: 2,450

### CAPACITIES

Seated Dining: 132  
Standing Reception: 220



# AUDITORIUM



Praised internationally for its acoustics, the Auditorium in Orchestra Hall is the centerpiece of the venue—perfect for a concert, gala, lecture, business meeting, seminar or any other significant occasion. The stage is also a unique option for a cocktail reception or seated dinner.

Auditorium Square Footage: 8,775  
Stage Square Footage: 2,520

### CAPACITIES

Main Floor: 1,224  
Balcony A: 299  
Balcony B: 285  
Balcony C: 281  
Total Maximum Capacity: 2,089

### FEATURES

Enhanced audio and lighting system, projection and livestream capabilities, music stands, chairs, risers/platforms. Full technical information available upon request.



# ROBERTA MANN GRAND FOYER



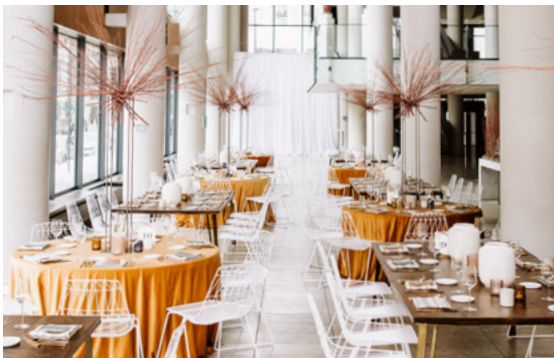
Square Footage: 7,874  
Ceiling Height: Varies

### CAPACITIES

Seated Dining: 300  
Standing Reception: 1,316  
Theater Seating: N/A

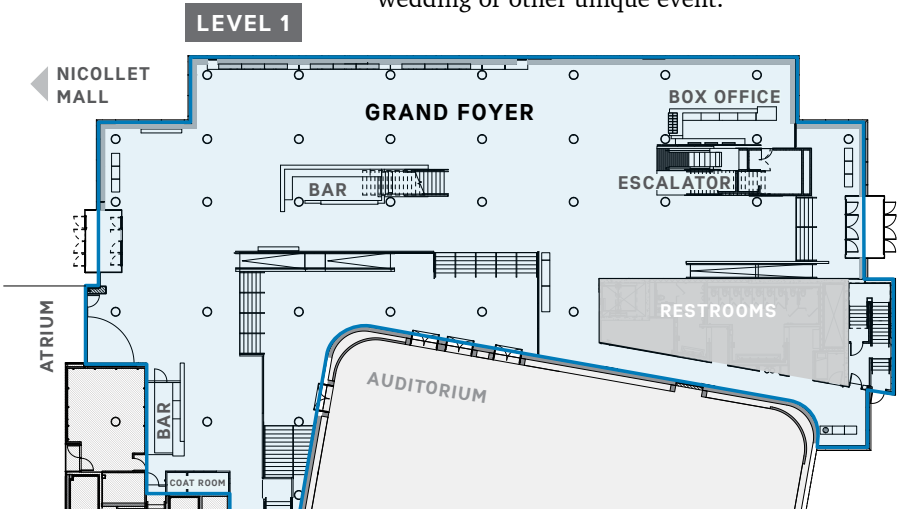
### FEATURES

Wireless Internet, audio system, customized up lighting, two built-in, granite bars. Can be expanded to include the adjoining Target Atrium and the Cargill Commons outdoor patio overlooking Peavey Plaza.



The Orchestra Hall lobby, known as the Roberta Mann Grand Foyer, offers commanding views through expansive windows and balconies that give it a bright, light and spacious feel. The space is defined by multiple levels overlooking the downtown skyline.

The entire space, or individual levels, may be rented for an elegant dinner, special meeting, wedding or other unique event.





## TARGET ATRIUM



The Target Atrium is our most versatile space, allowing you to customize the set-up of your event.

This flexible 2,650-square-foot space is ideal for corporate meetings, rehearsals, performances, community events and private social gatherings, such as a reception or seated dinner.

The room features a fireplace and floor-to-ceiling windows facing Peavey Plaza and the downtown Minneapolis skyline.

Square Footage: 2,650  
Ceiling Height: 26'2"

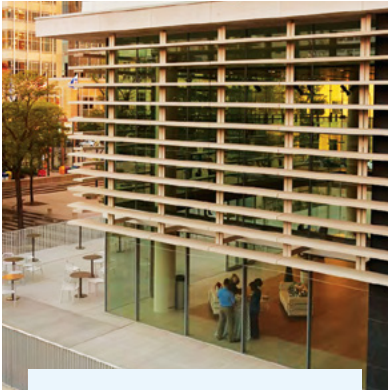
### CAPACITIES

Seated Dining: 168  
Standing Reception: 300  
Theater Seating:  
226 – film, small recital  
164 – small ensemble  
132 – youth orchestra

### FEATURES

Wireless internet, audio system, fireplace, catering kitchen and access to Cargill Commons, an outdoor patio overlooking Peavey Plaza.

# CARGILL COMMONS



Extending the Orchestra Hall experience outdoors, Cargill Commons is a patio that wraps the exterior of the Target Atrium. This patio is a perfect place to entertain guests which overlooks Peavey Plaza, an urban park with lush green space, water fountains, and tree canopies.

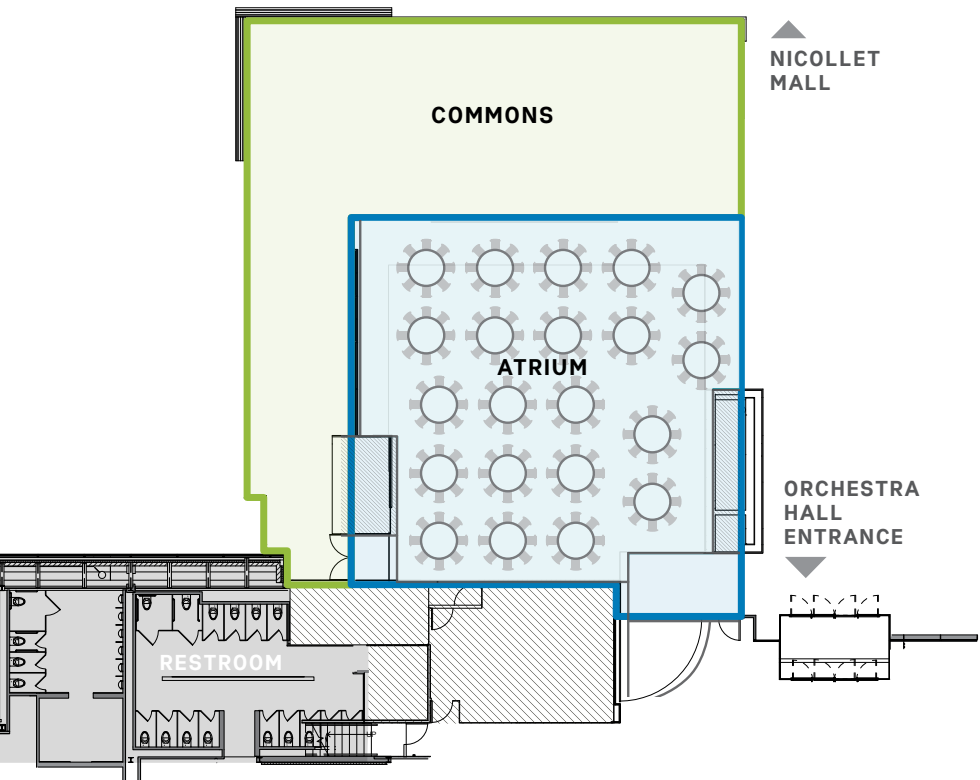
Cargill Commons may be rented as a stand-alone space, or in conjunction with Target Atrium to provide both indoor and outdoor options for your event.

Square Footage: 2,450

### CAPACITIES

Seated Dining: 132

Standing Reception: 220





## N. BUD GROSSMAN MEZZANINE & LINDAHL TERRACE



The N. Bud Grossman Mezzanine offers views of downtown Minneapolis and Peavey Plaza and is an ideal space for a pre-or post-concert happy hour, lunch meeting or other social gathering.

For extra style and flexibility, head outdoors to Lindahl Terrace, a private outdoor space. Let nature be your stage on this beautiful outdoor terrace, perfect for a variety of social gatherings.

### N. BUD GROSSMAN MEZZANINE

Square Footage: 2,785  
Ceiling Height: 30'

#### CAPACITIES

Seated Dining: 100  
Standing Reception: 250  
Theater Seating: 120

#### FEATURES

Wireless internet, built-in granite bar and access to the adjacent outdoor Lindahl Terrace.

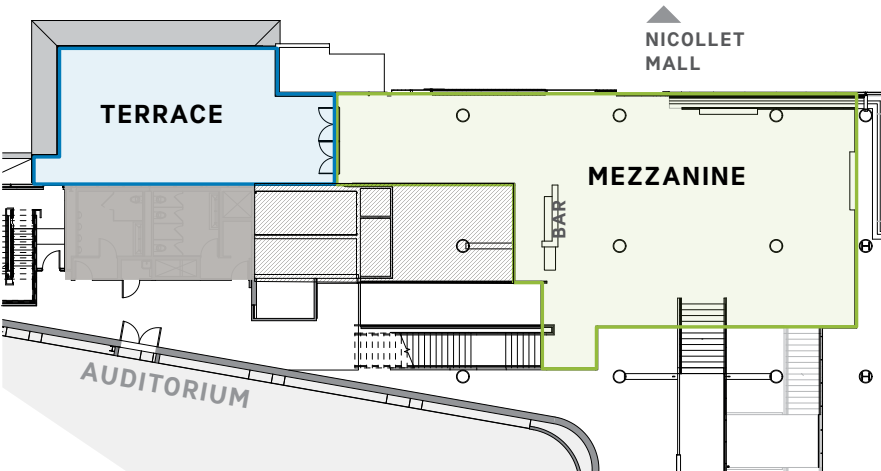
### LINDAHL TERRACE

Square Footage: 1,160

#### CAPACITIES

Seated Dining: 56  
Standing Reception: 151

### LEVEL 3





# KATHY AND CHARLIE CUNNINGHAM GREEN ROOM



Square Footage: 1,050  
Ceiling Height: 9'1"

**CAPACITIES**

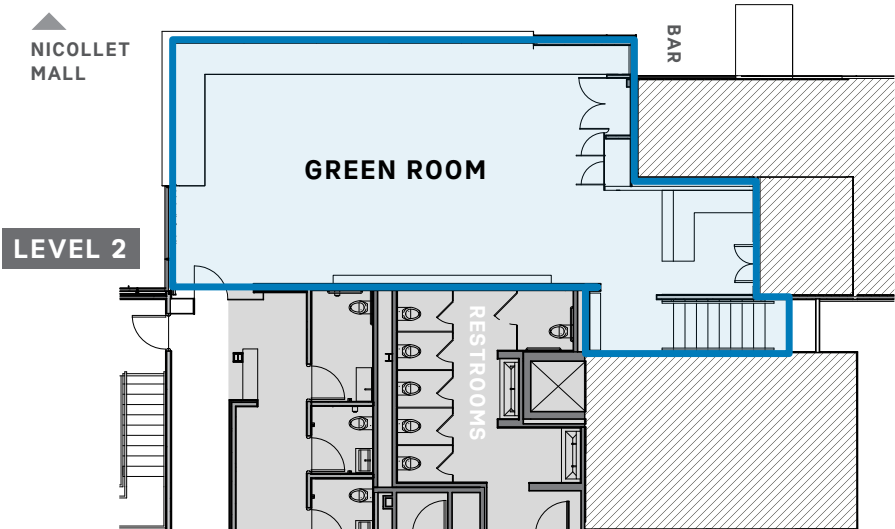
Seated Dining: 48  
Standing Reception: 68  
Theater Seating: 64

**FEATURES**

Wireless internet, built-in granite bar

The Kathy and Charlie Cunningham Green Room is an exclusive space, located on Orchestra Hall’s Balcony A level, with windows that offer an impressive view of Peavey Plaza and Nicollet Mall.

The Cunningham Green Room is an ideal destination for a private pre-concert reception, happy hour, business meeting or a small, social gathering.



## ADDITIONAL OPPORTUNITIES



## GROUP AND CORPORATE SALES

In addition to discounts of up to 20% off single ticket prices, the Minnesota Orchestra's Group Sales department offers priority seating, flexible payment plans and exceptional service. Group ticket and rental space discounts are available for groups of 10 or more.

## PRIVATE PERFORMANCES

Whether you need the energy of the full Orchestra or the intimate experience of a small chamber group, the musicians of the Minnesota Orchestra are ready to transform your event into a lush, brilliant musical experience. The Minnesota Orchestra accepts booking proposals as part of your Orchestra Hall stand-alone rental or off-site event.

## PARTNERSHIPS

Corporate sponsorships with the Minnesota Orchestral Association offer high-profile recognition, exclusive benefits and an opportunity to enhance corporate visibility. The Orchestra's sponsorship team is ready to work with your company to customize a partnership that will meet your strategic goals.

### OPPORTUNITIES FOR SPONSORSHIP INCLUDE:

#### CONCERTS

From a single event to a weekend or multi-week festival

#### SERIES

Season-long recognition with the Orchestra's popular concert offerings

#### EVENTS

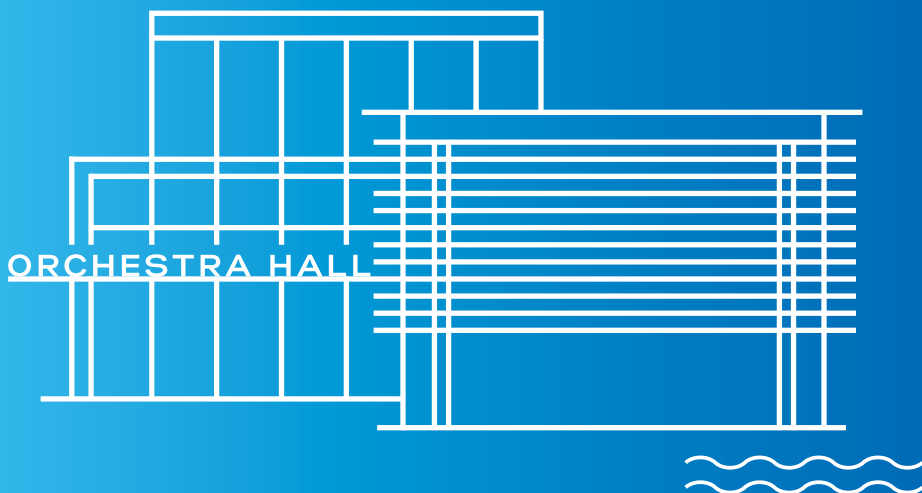
Season-opening weekend, Symphony Ball, Summer at Orchestra Hall, Day of Music and more

#### EDUCATION AND OUTREACH

From local concerts for children to concerts in Greater Minnesota



# BOOK YOUR EVENT TODAY!



## MAKE ORCHESTRA HALL YOURS

Visit [rentorchestrahall.org](https://rentorchestrahall.org) for up-to-date rental rates and venue information.

Call **612-371-5693** to book your event today!

**612-371-5693 | [rentorchestrahall.org](https://rentorchestrahall.org) | Orchestra Hall**  
**1111 Nicollet Mall, Minneapolis, MN 55403**

PHOTOS Cover: Courtney Perry, Page 1: Joseph Scheller, Coppersmith Photography, Tyler Allix, Page 3: AdFed, Page 4: Jayme Halbritter, Matt Lien Photography, Page 5: Frank Merchlewitz, Coppersmith Photography, Page 6: Joseph Scheller, Phil Leisenheimer, Page 7: Nate Wolf, Page 8: Frank Merchlewitz, Page 9: Meg Cooper, Joseph Scheller.

RE-2021-001