



WORLD VISION NEW ZEALAND

2020 ANNUAL REPORT



The Message

Each time we reflect on the year that's behind us, we find ourselves wishing that you could meet all the children and families who your gifts touched. If you could, you would immediately see the difference that your generosity is making – we can't thank you enough for that.

Where families in slums faced the prospect of COVID-19 with little healthcare, you brought trained community health workers. Where children in remote villages were unable to go to school, you brought home learning to them. And where families in overcrowded refugee settlements faced the prospect of sharing a single tapstand with 50 other families, you brought handwashing stations to help keep them safe.

2020 may have been tough for you. It certainly was for the children and families in the countries we work in – often almost unimaginably tough. And the coming years will bring many more challenges for the people who are the poorest in the world.

So we need to ask you to keep doing whatever you can to be part of this work. **The reality is that without the support of you and others like you, not a single piece of this essential work could be done.**

By doing this, you are showing that no matter what is going on in the world, we don't need to give in to apathy, or a belief that this is somehow the natural order. And you are sending a message that every child is precious, that every single one of them is sacred and has inherent worth.

It's such a joy and a privilege to be part of this mission with you. On behalf of every single child to whom you have been part of sending a practical message of kindness and care to in 2020, thank you.

Kia tau te rangimarie.
Peace and blessings to you.



Grant Bayldon

Grant Bayldon
National Director



Fepulea'i Margie Apa

Fepulea'i Margie Apa
Board Chair

CONTENTS

- 2 The Message
- 3 The Mission
- 4 The Impact
- 5 The Finances



The Mission

You are helping the world's most vulnerable kids to overcome poverty and experience fullness of life.

World Vision is a Christian humanitarian organisation. Our supporters empower kids, their families and communities to tackle the root causes of poverty and injustice, which rob children of their lives and futures.

Because of you, we know no bounds or borders. You are helping kids of all backgrounds, regardless of religion, race, ethnicity or gender, even in the most dangerous places. Day in and day out, you join forces with our staff, partners and communities on the ground to help kids and their families break free from poverty. For good.

With your support, we use proven, world-class development methods to bring food, water, education and economic change. By helping communities to protect kids from violence and neglect, caring for them in emergencies and challenging everyday injustice, you are equipping them to make real change that lasts.

Together, we're protecting children today and empowering them for tomorrow. The more of us there are, the stronger we become, and the bigger our impact will be.

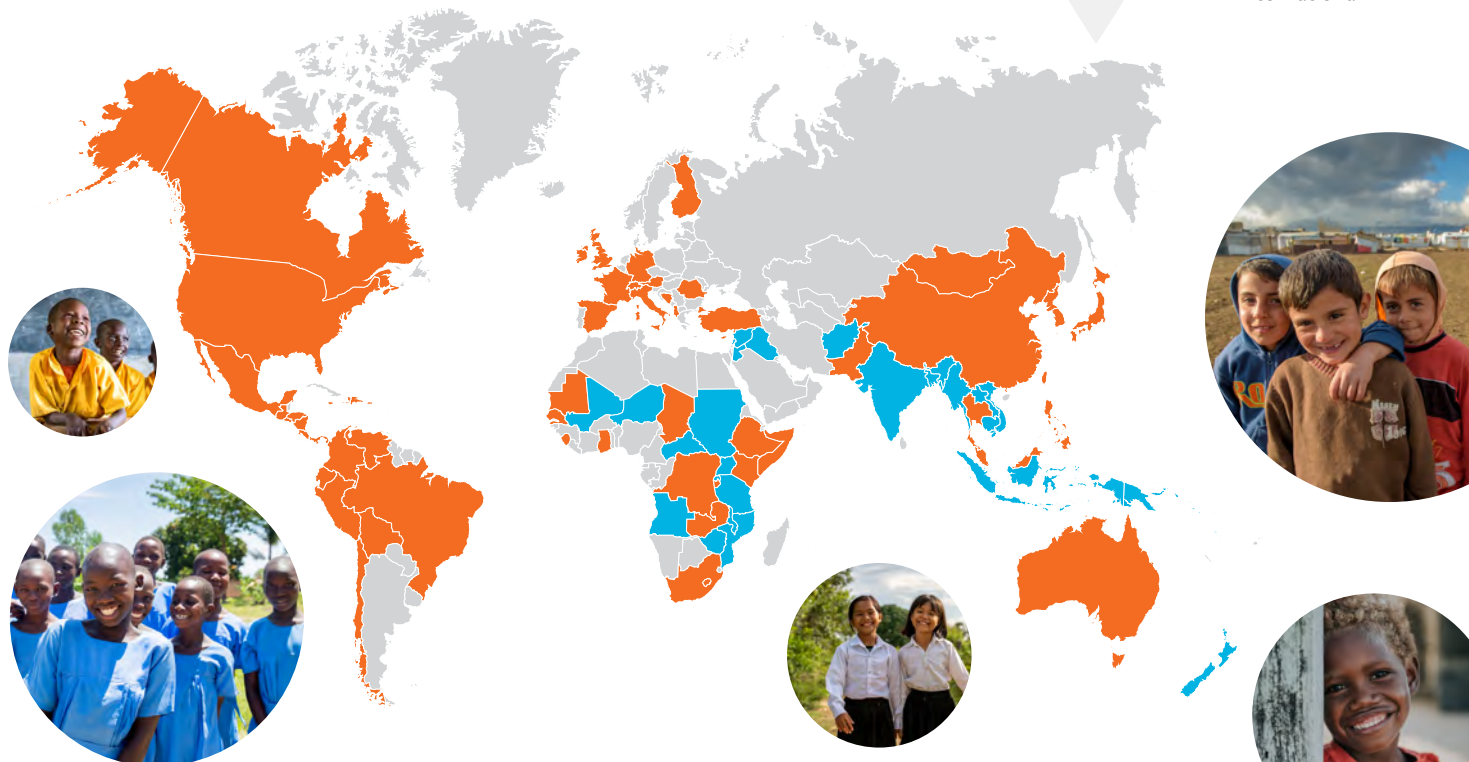


Every 60 seconds, a family gets water, a hungry child is fed, and a family receives the tools to overcome poverty.

Going to the ends and back. It's what we do because of you.

2020 Reach

- Key**
- World Vision New Zealand
 - World Vision International



Child Protection



Water



Education



Health



Family Income



Emergency Relief



Partnering with New Zealand's Ministry of Foreign Affairs and Trade



We partner with the New Zealand Aid Programme to help more children, families and communities in the Pacific and South East Asia enjoy safe, clean water; better hygiene and sanitation; and earn more family income. We're dedicated to helping our neighbours build a brighter future where kids can thrive.

The Impact

You are extraordinary! Look at these highlights from last year. Because of you and generous Kiwis like you:



11,800 people participated in **local savings groups**, helping them to provide for their kids, now and in the future.



4.2 million+ people received **life-saving food**, including **2.4 million+ kids**, through our partnership with the World Food Programme.



11,600+ children in Malawi and Mali **learned how to read and write**.



36,000 community members were trained in **child protection**, helping to keep kids safe from violence, neglect and abuse.

When COVID-19 struck, you stepped up to save lives. Here's just some of what we accomplished together:



1.5 million+ handwashing supplies were distributed, helping kids and families to **protect themselves from COVID-19**.



365,700 educational materials were given out so kids could **learn from home** when schools were locked down.



16,200 faith leaders were trained to teach their communities how to **prevent the spread of COVID-19**.



45,600 health workers were given **PPE** to help protect them and their families.

The Finances

Statement of Comprehensive Revenue and Expenses

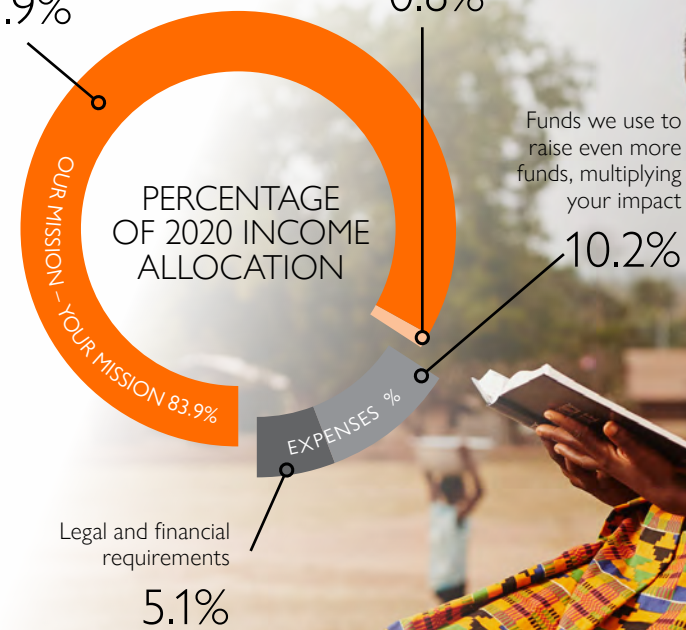
World Vision Of New Zealand Trust Board Five Year Summary	2020	2019	2018	2017	2016
Revenue					
Revenue from New Zealand donors					
Child sponsorship income	22,394	23,187	24,354	26,760	29,322
Private donations	12,430	12,210	14,589	10,499	13,017
Grant income	3,315	4,157	5,592	5,410	6,646
Humanitarian appeals	1,984	1,157	709	1,870	1,380
	40,123	40,711	45,244	44,539	50,365
Interest and other income	423	467	485	457	733
Total revenue from New Zealand	40,546	41,178	45,729	44,996	51,098
Multilateral grant income	29,505	26,276	23,179	21,767	22,159
Total revenue	70,051	67,454	68,908	66,763	73,257
Relief and development project costs	59,306	56,283	57,488	54,279	59,943
Operating expenditure					
Raising further funds	7,144	7,279	7,488	6,972	8,568
Legal, ICT and Financial	3,601	3,892	3,932	5,512	4,746
	10,745	11,171	11,420	12,484	13,314
Net surplus/(deficit)	-	-	-	-	-

International Programme Support

83.9%

Advocating for the world's most vulnerable within New Zealand

0.8%



- For every \$1 raised by the New Zealand public in 2020, \$1.61 went to our international programmes, thanks to our partnerships and grants.
- Full financial statements, audited by PWC, available upon request.



World Vision 



Thanks so much for your support

Postal Address

Private Bag 92078
Auckland 1142
New Zealand

Auckland

51 Hugo Johnston Drive
Penrose
Auckland 1061

Wellington

Level 2, 138 Wakefield St
Te Aro
Wellington 6011

Christchurch

286 Oxford Terrace
Christchurch Central
Christchurch 8011

worldvision.org.nz
email@worldvision.org.nz
0800 800 776

