

REQUEST FORM

CONSTRUCTION OF A MULTISPORT MINI-FIELD IN YOUR COMMUNITY

THE REQUEST MUST BE SENT TO THE FOLLOWING ADDRESS:

fondation@impactmontreal.com

OR BY MAIL AT THE FOLLOWING ADDRESS:

4750, rue Sherbrooke Est,
Montréal, Québec,
H1V 3S8

REGISTRATION DEADLINE

February 16, 2024

**THIS FORM MUST BE FILLED IN DIGITALLY, FORMS COMPLETED
BY HAND WILL NOT BE ACCEPTED.**

10 MULTISPORT MINI-FIELDS FOR THE 10 YEARS OF THE MONTREAL IMPACT FOUNDATION

DESCRIPTION:

As part of its 10th anniversary, the Montreal Impact Foundation has committed to build 10 multisport mini fields, two per year, across Quebec's communities over the next five years.

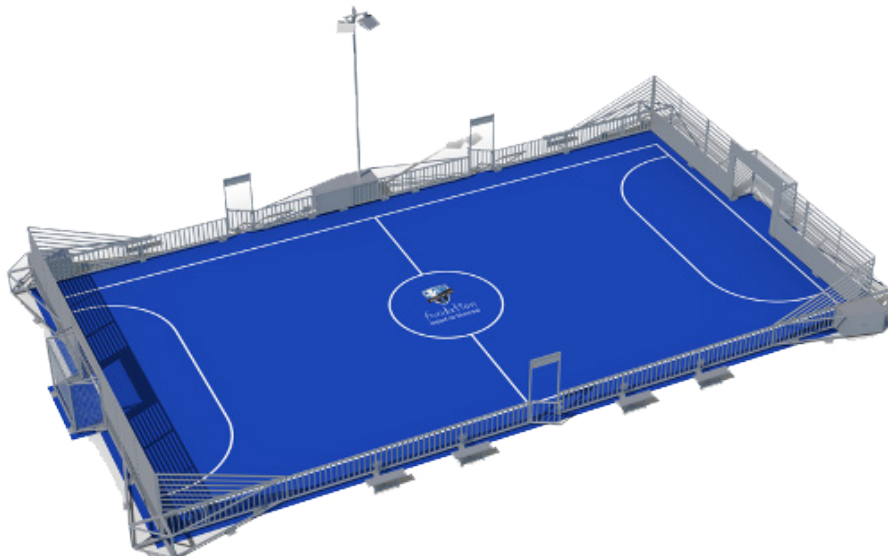
It wishes to further its mission which aims to promote a healthy and active lifestyle for kids living in communities where sporting infrastructures are sparse or lacking while also encouraging social integration.

The mini-fields are built on a concrete or asphalt surface on which is laid an acrylic coating in order to play various sports. They are framed by a modular galvanized steel structure.

(See photos p. 5 and 6).

The project is driven by values of accessibility and hospitality, and a desire for fruitful collaboration with stakeholders who are firmly rooted in their communities and are committed to improving the quality of life of children and their families. This forward-looking initiative is designed to make a positive difference in the lives of young people, enabling them to be active and play in a safe environment.

The Foundation invites community and charitable organizations, as well as Quebec's cities and municipalities, to submit their applications no later than February 16, 2024, by filling out the form at the end of this document.



ABOUT THE MONTREAL IMPACT FOUNDATION

The Montreal Impact Foundation was inaugurated on August 26, 2013. The Foundation was established as a legacy honoring 20 years of the Montreal Impact's, now CF Montréal, community involvement

The Foundation's mission is to organize and support activities with the goal to improve the quality of life of children and families from underserved or vulnerable communities. It notably provides sporting infrastructures to promote physical activity and social inclusion.

To date, the Montreal Impact Foundation has enabled the construction of five multisport mini-fields in different regions of Quebec: Champdoré Park in the Saint-Michel district in 2018, Joe-Beef Park in the Pointe-Saint-Charles district in 2019, Paul-André-Potvin Park in Shawinigan in 2021, Parc du Moulin in Laval in 2022, and in La Tuque in 2024.

GENERAL ELIGIBILITY REQUIREMENTS:

- Be a recognized and registered organization, city or municipality;
- Provide a detailed description of the project;
- Provide a resolution from the Board of Directors authorizing the application (if applicable);
- The project must be addressed to children and their families;
- Have completed the application form before the deadline (February 16, 2024).

SELECTION CRITERIA:

Entries must meet certain criteria and must:

- Demonstrate that the mini-field will be built in an underserved neighbourhood or sector;
- Highlight the relevance and need for a multisport mini-field in the community;
- Confirm that the city or the organization will provide the space for the construction of the mini-field free of charge.
- Demonstrate that the mini-field will enhance community spirit;
- Confirm that the mini-field will be open to the general public at all times.
- Include technical specifications for construction, see MUSCO document (criteria for commitment p. 10 and 11).

THE EVALUATION COMMITTEE WILL PAY PARTICULAR ATTENTION TO THE FOLLOWING ASPECTS:

- The clarity of the project and the quality of the application presentation;
- Feasibility and guarantee of project completion;
- The professionalism of the project's approach;
- The value of the project's benefits for the community;
- The estimated impact of the project on the community.

PHILOSOPHY AND VALUES OF THE MONTREAL IMPACT FOUNDATION:

- Children and their families will always be the focal point;
- Accessible and welcoming.
- Offering support to children in order for them to develop their full potential and adopt an active lifestyle.

The applications which best correspond to the Foundation's values will be selected.

APPLICATION EVALUATION

The evaluation process of applications will be under the responsibility of a representative of the Montreal Impact Foundation.

All applications that meet the eligibility criteria are submitted to an evaluation committee, under the responsibility of the Foundation. This committee is made up of individuals chosen for their expertise in the field of sports and community life. It analyzes the submitted applications according to the general selection criteria defined above. It makes specific recommendations for each application to the Board of Directors of the Montreal Impact Foundation. The decision whether or not to grant a multisport mini-field is the prerogative of the Montreal Impact Foundation's Board of Directors and cannot be appealed.



CALENDAR

MID-NOVEMBER 2023

- Launch of new program for 2 mini-fields in 2024
- Application deadline : February 16, 2024

FEBRUARY 2024

- Evaluation of applications by the evaluation committee
- Selection of 2 projects for the development of the mini-fields for summer 2024

MARCH 2024

- Announcement to the 2 organizations/cities

MAY TO MID-JULY 2024

- Installation of the fields

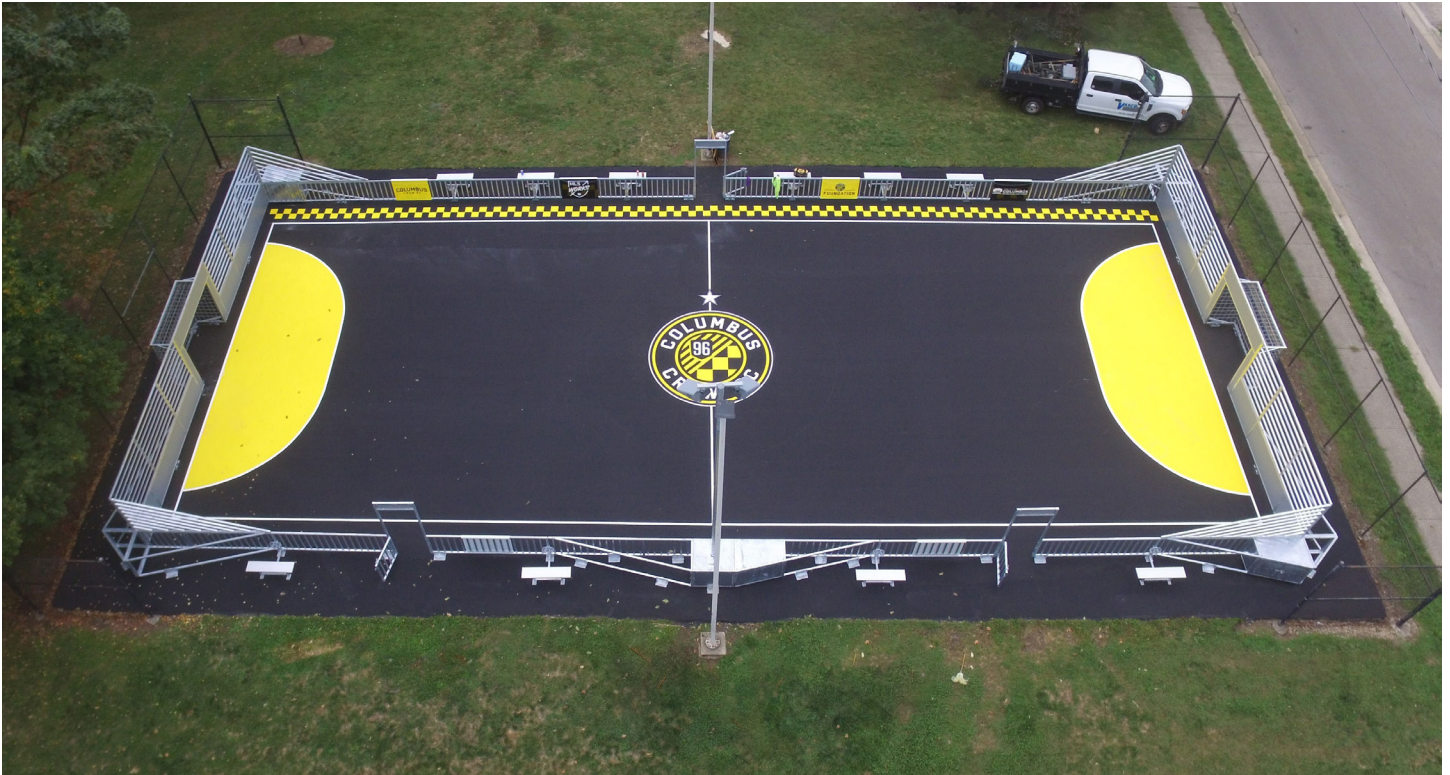
LATE JULY 2024

- Delivery of the infrastructures

AUGUST 2024

- Inauguration with members of the first team (CF Montréal)

EXAMPLES OF MINI-FIELDS:



EXAMPLES OF MINI-FIELDS:



REQUEST FORM

SECTION 1: APPLICANT IDENTIFICATION

APPLICANT IDENTIFICATION

Name of the organization:

Website (if relevant):

Address:

City:

Province:

Postal Code:

Phone:

PERSON MANDATED TO COMPLETE THE FORM:

Last name:

First name:

Address (if different from organization):

City:

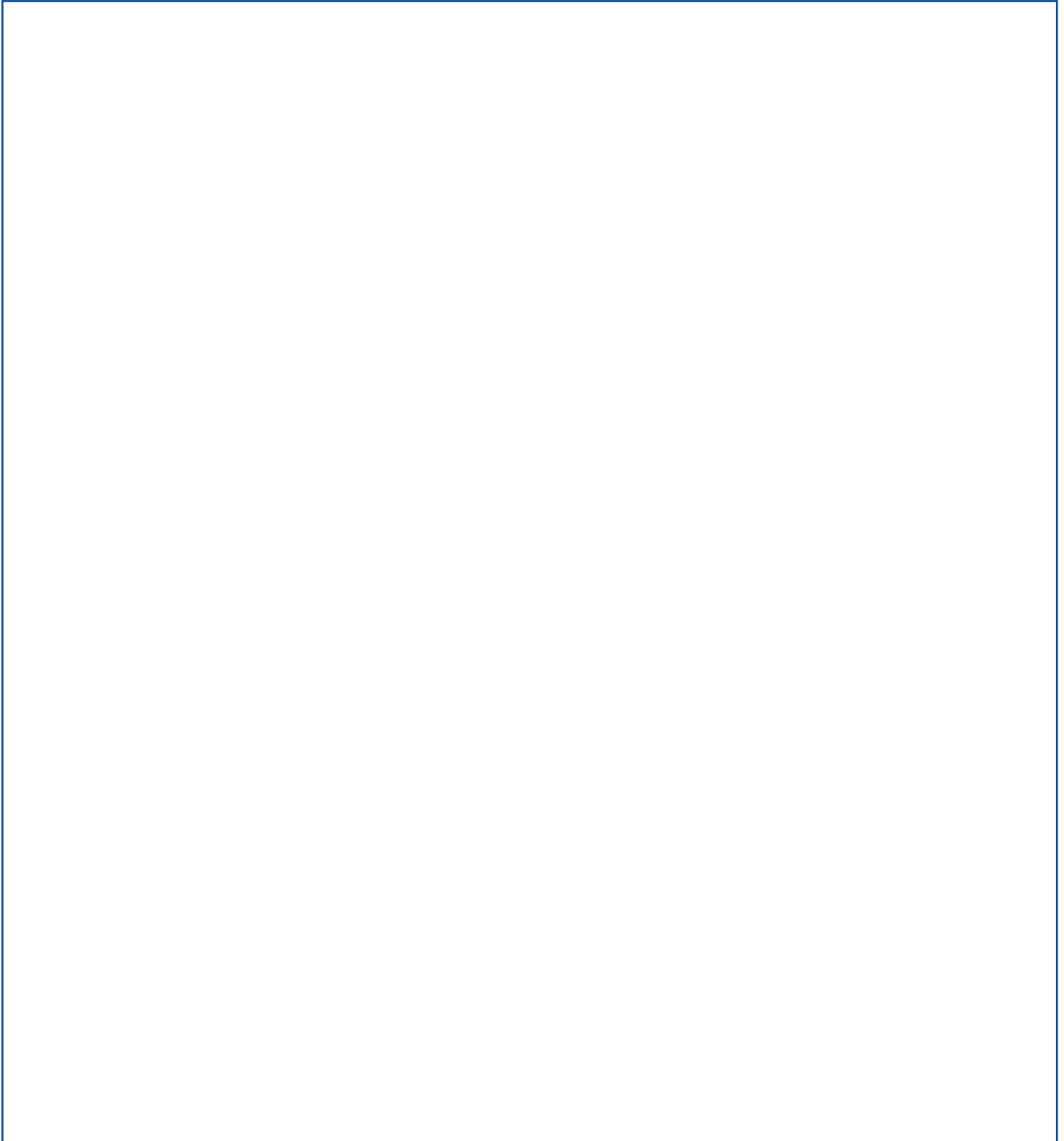
Province :

Postal Code:

Phone:

Email:

SECTION 2: SUMMARY OF ORGANIZATION



SECTION 3: DESCRIPTION OF PROJECT

Describe your project by providing or specifying the following information

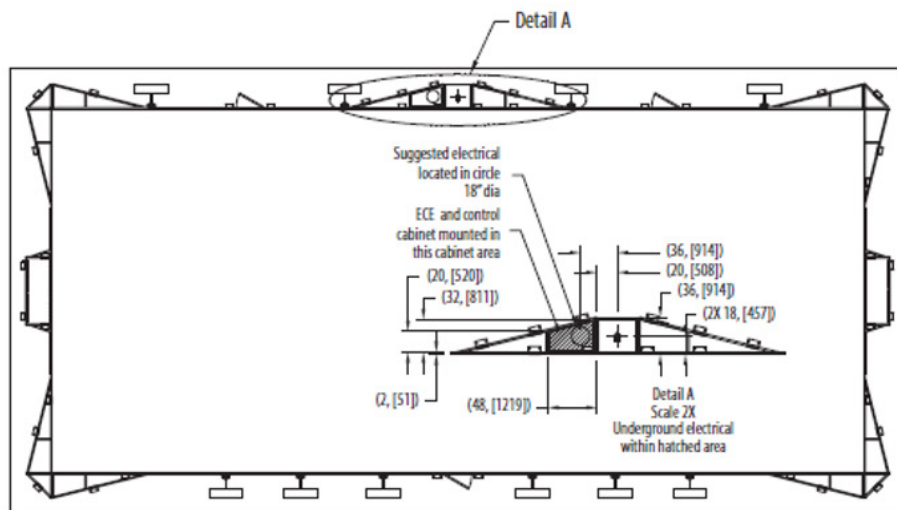
- Demonstrate that the mini-field will be built in an underserved neighbourhood or sector.
- Highlight the relevance and need for a multisport mini-field in the community.
- The space must be offered free of charge by the municipality or organization.
- Location of where the site will be built. (Photos)
- Description of the municipality's sports/activities program.
- Why should the city or organization receive this infrastructure?
- Sport's place in the community.
- Photos of current sports facilities

SECTION 4: LOCATION CRITERIA

Musco Mini-Pitch System™ Minimum Site Requirements

In order to qualify as a potential Musco Mini-Pitch System building site, you must meet the following minimum requirements.

- Asphalt or concrete pad.
- Pad must be a minimum of 4' (1.22m) longer and 3' (0.91m) wider than what is needed for the Mini-Pitch System. For safety purposes, we recommend 10' (3.05m) longer and 10' (3.05m) wider.
- Pad must be consistent and uniform in grade.
- Pad must not have substantial defects (i.e. wide cracks, heaving, potholes, etc.), or other obstacles (i.e. drains, basketball poles, etc.) on playing surface.
- Pad has to be accessible by telehandler for installation.
- Access to electrical for lighting options.
 - See next page for electrical requirements.



SECTION 4: LOCATION CRITERIA

» NEXT

Musco Mini-Pitch System™ Minimum Site Requirements

Electrical Requirements: Two circuits need to be brought to a single point on the mini-pitch (see diagram on the previous page); a 120v control circuit and a lighting circuit. The lighting circuit needs a minimum of 208v single phase, but other options are available.

- 120v control circuit allows the lights to operate and be scheduled. The circuit draws less than an amp. A control transformer can be utilized in certain applications.
- The lighting circuit can be 208v, 240v, 277v, 347v or 480v. The draw on the lighting circuit depends on the voltage (see table below). A single mini-pitch has two lights while a double has four lights. The values in the tables are for a single fixture. All lighting circuits are single-phase.
- A single mini-pitch has one connection point and can be on either sideline.
- A double mini-pitch has poles on both sidelines and will need a feed brought to one sideline. In addition, there must be a conduit between the two poles to feed the second pole—similar to a switch leg.

	200 Vac 50/60 Hz	208 Vac 60 Hz	220 Vac 50/60 Hz	230 Vac 50 Hz	240 Vac 50/60 Hz	277 Vac 60 Hz	347 Vac 60 Hz	380 Vac 50/60 Hz	400 Vac 50 Hz	415 Vac 50 Hz	480 Vac 60 Hz
Max operating current per luminaire	3.32 A	3.19 A	3.02 A	2.89 A	2.77 A	2.40 A	1.92 A	1.75 A	1.66 A	1.60 A	1.39 A

SECTION 5: PROJECT BENEFITS

Describe how this project will benefit children and families in your community

Have other grant applications been submitted for this project?

YES

NO

<p>If yes, fill the following chart:</p> <p>Organization/private sponsor or level of government requested</p>	<p>Program (if applicable)</p>	<p>Amount requested</p>	<p>Amount granted</p>