

Specification: Internal Roller Blind Motorisation

Somfy Sonesse 40 RTS Quiet Radio Technology Motor Specification

The roller blind motor shall be a Somfy Sonesse 40 RTS manufactured by Somfy SAS, 50 Rue du Nouveau Monde, 74300 Cluses, France and supplied by Somfy Pty. Limited, 9/38-46 South St, Rydalmere NSW 2116. Ph +61 2 8845 7200, www.somfy.com.au

Somfy Sonesse 40 RTS quiet motors are controlled with Somfy RTS Transmitters and are available in the following torques and speeds;

- 3Nm 30rpm
- 6Nm 20rpm

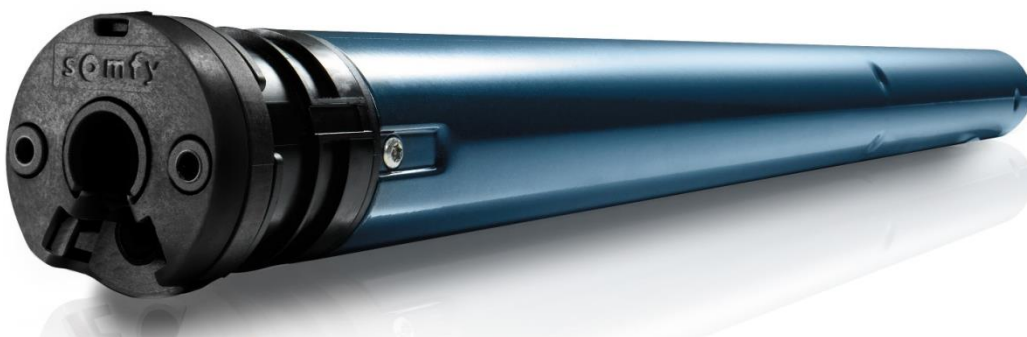
The selection of the Somfy Sonesse 40 RTS motor model shall be done in conjunction with the roller blind manufacturer and is dependent on the dimensions of the blind and if blinds are linked.

Noise Level: Noise level power shall be less than 45 dB(A), measured in an end product, with a sonometer located 1M away from the end product, according to Somfy measurements with highest value under load in an upward direction for a minimum of 10 seconds.

RCM Compliancy: Somfy Sonesse 40 RTS motors are RCM compliant.

RoHS Compliancy: Somfy Sonesse RTS motors comply with RoHS Directive, 2002/95/EC: restriction of the use of certain hazardous substances in electrical and electronic equipment.

Installation: Setting of the motor direction and top/bottom limits is done using Somfy RTS transmitters. Motors have to be installed, connected and set in accordance with Somfy instructions and in compliance with federal, state or local regulation. Installation contractor is responsible for site measurements and suitability of mounting surface. Can only be installed in an internal environment.





Control Options:

Somfy Sonesse 40 RTS motors may be controlled by any Somfy RTS transmitter including;

			
<p>Smoove 1 RTS Wall Mounted RTS Transmitter. Available in many different colours.</p>	<p>Telis RTS 1 & 5 Channel Hand Held Remote Controls.</p>	<p>Situ RTS 1, 2 & 5 Channel Hand Held Remote Controls.</p>	<p>RS485 RTS Transmitter 16 Channel Interface to Home Automation Solutions.</p>

For details on the full range of Somfy RTS transmitters contact Somfy Projects on +61 2 8845 7200.

Electrical Wiring:

Somfy Sonesse 40 RTS motors are double insulated with an active (brown) and neutral (blue) cable and only require connecting to 230VAC power. It is recommended that it is possible to isolate each motor from power for programming and any servicing of the blind(s). All Somfy motors are available with a discreet in-line male/female power connector.

Care and Maintenance:

Somfy motors have no maintenance or cleaning requirements when installed and handled as per instruction. Operating conditions are Temperature 0°C to +60°C, Humidity max 85% at 30°C. Somfy motors have a 5 years warranty starting on the date of manufacture of the motor; this warranty can be extended another 2 years when connected by Somfy Electrical Services.



For further details contact:

Jeremie Henry
Commercial Specification Consultant, Somfy
M: 0409 606 103
T: +61 2 8845 7200
E: jeremie.henry@somfy.com

Disclaimer:

This document records Somfy's best knowledge at the date of issue.
Due to continuing product development Somfy reserves the right to update technical information without notice.

Somfy's responsibility for the product as shipped is subject to Somfy's Terms of Trade, a copy of which is available upon request.

© Somfy Pty Limited ACN 003 917 244

Version:

Version 1.0 January 2018



Recognised
Provider®