

MINDSPACE

Shoreditch, London

THE GUIDE



The essential neighborhood guide
for the curious Mindspacer.



WELCOME TO THE HIGH LIFE

The Mindspace experience extends far beyond the corners of your working desk. It is one of discovery, culture immersion, balance, and high quality living.

This little pocket book is here to help you see, taste, feel, celebrate and unlock the best of what your Mindspace neighborhood is hiding up its sleeves. And feel free to invite your fellow Mindspacers to join you.

*At your service,
The Mindspace Team*

MINDSPACE

Mindspace neighborhood map

EAT

- 1 Blues Kitchen
- 2 Little Farm
- 3 Tramshed
- 4 Hawksmoor
- 5 Smoking Goat
- 6 Dishoom
- 7 The Vurger Co.
- 8 Hoi Polloi

AFTER HOURS

- 9 The Queen of Hoxton
- 10 The Owl and Pussycat
- 11 Aviary
- 12 Callooh Callay
- 13 The Book Club
- 14 JaguarShoes DreamBags
- 15 Platform
- 16 Hawksmoor | Spitalfields bar

COFFEE

- 17 Department of Coffee and Social Affairs
- 18 Franze & Evans
- 19 Attendant Shoreditch
- 20 Black Sheep Coffee
- 21 Shoreditch Grind

NECESSITIES

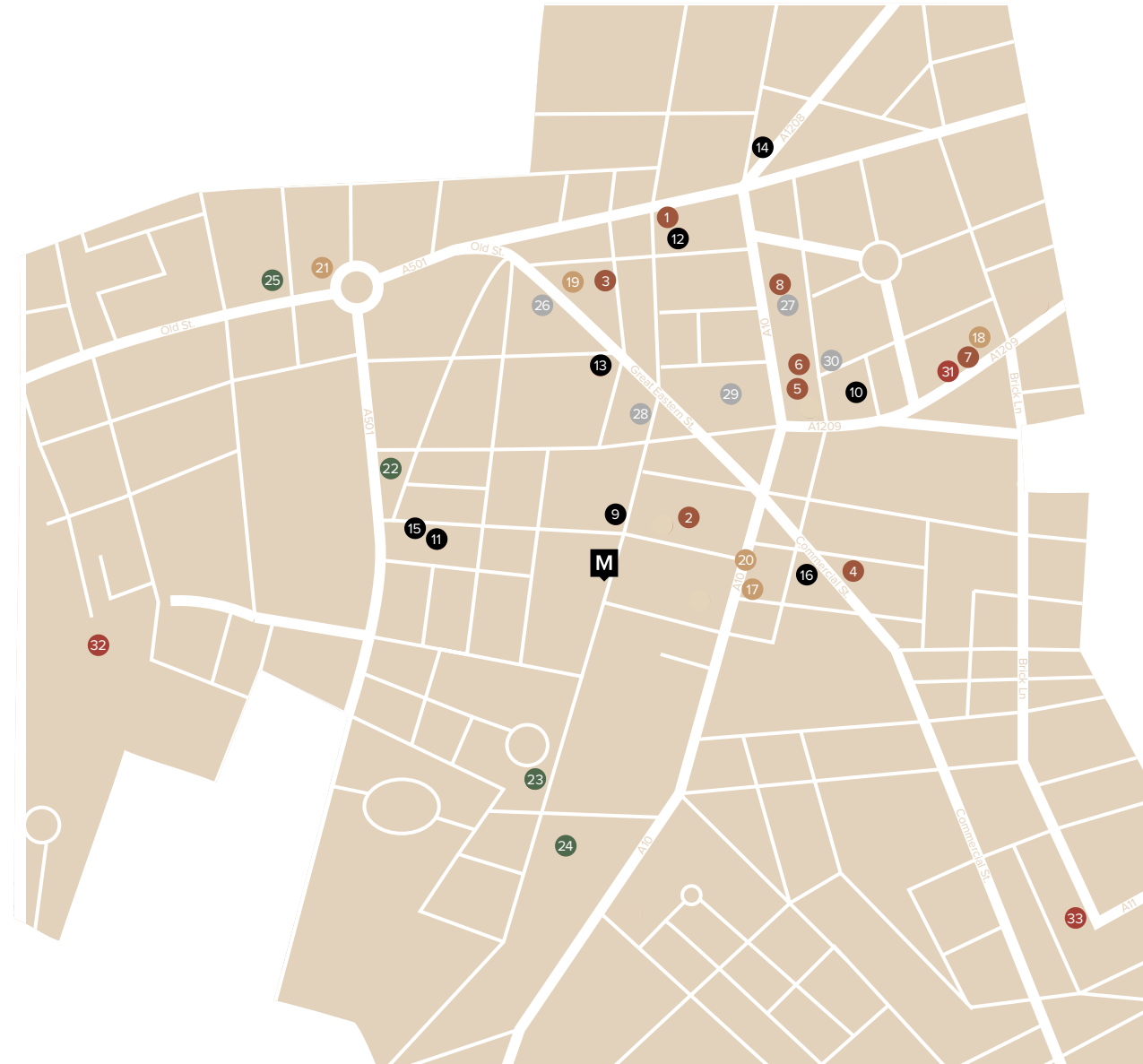
- 22 Tesco
- 23 Boots
- 24 Cards Galore
- 25 Post Office

SLEEP

- 26 The Hoxton Hotel
- 27 Ace Hotel London
- 28 The Curtain
- 29 Citizen M
- 30 Boundary Project

EXPLORE THE ARTS

- 31 Rich Mix
- 32 Barbican Centre
- 33 Whitechapel Gallery



BLUES KITCHEN

Acquaint your big appetite with American BBQ and New Orleans soul food at Blues Kitchen. There are booths, hot sauces, neon lights, gospel brunches, and daily rotations of live music shows to enjoy. Best to book a table in advance – these guys can get pretty busy in the evenings once the jazz band shows up.



Don't leave before you snap your fingers to a live brass band.

Walking time from the office:
600m (8 min walk)

Visit: 134-146 Curtain Road
Call: 020 7729 7216



LITTLE FARM

Think of Little Farm as the holistic one-stop shop for all your clean eating needs. Whether you're in the mood for nourishing lunch or an organic meal to make at home, their team's holistic commitment to good food is supreme.

Don't leave before you have your farmer eggs folded or scrambled.

Walking time from the office:
120m (1 min walk)

Visit: 115 Worship Street
Call: 020 3195 2945



TRAMSHED



An iconic Shoreditch haunt, Tramshed delivers epic carnivorous experiences via prime steak cuts and succulent chicken made to share, as well as exquisite British seasonal dishes. Tramshed is home to beautiful, industrial interiors, unique dining spaces and Damien Hirst's formaldehyde cow takes centre stage.

Don't leave before you order Yorkshire pudding with whipped chicken liver.

Walking time from the office:
600m (7 min walk)

Visit: 32 Rivington Street
Call: 020 7749 0478



HAWKSMOOR



In this stripped back, bare brick restaurant, you'll be treated to some of the best surf and turf in the city. Steak, seafood and cocktails are the go here, and we like to finish things off with a sweet ration of toffee pudding. The mac and cheese is pretty famous here too.



Don't leave before you you sip their famous new cocktail Le Crunch.

Walking time from the office:
500m (6 min walk)

Visit: 157A Commercial Street
Call: 020 7426 4850





SMOKING GOAT

Takes a trip to Bangkok, realizes she/he hasn't even left Ei. That's what this late-night canteen scene does to you. The ever-cool Smoking Goat's teleportation skills can be found in rounds of Thai street food, and quirky drinks designed to palette-cleanse and wash it all down.

Don't leave before you share the entire menu.

Walking time from the office:
550m (7 min walk)

Visit: 64 Shoreditch High Street



DISHOOM

That long queue of people wrapping around the street? That's the line for Dishoom, the all-time favourite provider of Bombay comfort food. At breakfast, enjoy bacon naan rolls and bottomless chai - with free wi-fi and lots of sockets, it's the perfect location for morning meetings or working on-the-go. At lunch and dinner, don't miss out on the slow cooked chicken murgh malai, the house black daal, or the Shoreditch special of slow braised, tender lamb raan.

Those in the know will book early to avoid the queue - they take reservations for all group sizes until 5.45pm, and for groups of 6+ thereafter. Haven't managed to bag a table in advance? Get in line and enjoy a free chai to keep you warm - it's well and truly worth the wait...



Don't leave before you scoop some black lentil daal.

Walking time from the office:
600m (8 min walk)

Visit: 7 Boundary St
Call: 020 7420 9324



Hoi Polloi



Don't leave before you eat the Hoi Polloi cheeseburger and dripping chips.

Walking time from the office:
900m (11 min walk)

Visit: 100 Shoreditch High Street
Call: 020 8880 6100



Order a dozen oysters and bottle of beautiful champagne, and you've got yourself a steady session. This understated modern brasserie in Ace Hotel is great for both breakfast and a low-key dinner. We also come for the mac and cheese.



THE VURGER CO.

Vegan burgers are the go at The Vurger Co., the place to find the most delicious, healthy fast food in all of London. Just so happens to be a short walk from MindSpace – lunch, anyone?



Don't leave before you smother it all in cumin mayo.

Walking time from the office:
900m (11 min walk)

Visit: 9 Avant Garde Richmix Square
Call: 020 3222 0049

After hours



THE OWL AND PUSSYCAT

A local favourite, this bustling pub is bursting at the seams by six o'clock in the evening, and we highly recommend that you join the fun. Scrumptious British pub grub and a very decent selection of drinks will see you through unplanned hours in their garden.

Don't leave before you check out the not so secret cocktail bar upstairs...

Walking time from the office:

650m (8min walk)

Visit: 34 Redchurch St

Call: 020 3487 0088



AVIARY

Whether you're at Aviary for its modern British fare (straight out of the coal oven) or for its breathtaking views over the city, you'll definitely stay a while.



Don't leave before you soak in extraordinary views of the city at sunset.

Walking time from the office:

350m (4 min walk)

Visit: 22-25 Finsbury Square

Call: 020 3873 4060





Don't leave before you order a daiquiri.

Walking time from the office:

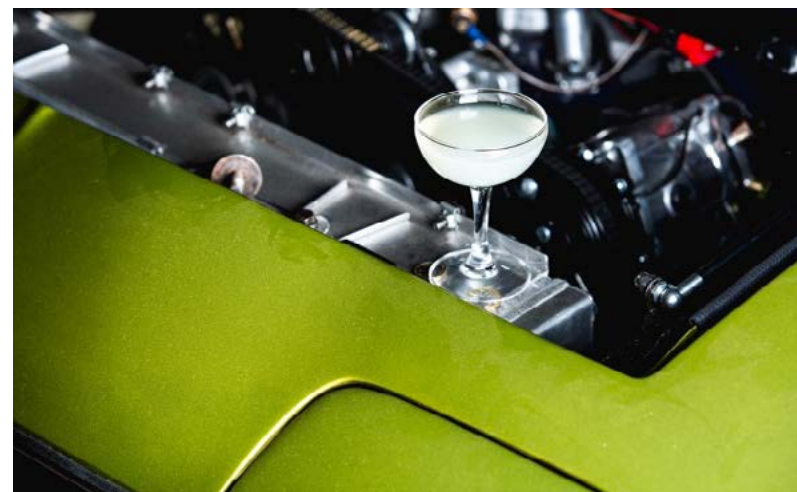
600m (7 min walk)

Visit: 65 Rivington St

Call: 020 7739 4781

CALLOOH CALLAY

Sipping (or slurping) on their award-winning cocktails, you'll lose yourself down the rabbit hole at this beautiful, standout Lewis Carroll themed bar. With an extensive and very innovative menu, Callooh Callay was one of the first bars to bring cocktails to Shoreditch, back in the day. They deserve a medal in our eyes.



Credit: Charlie McKay



THE BOOK CLUB

For a more laid-back vibe that pairs delicious ribs with table tennis, bring your colleagues, coworkers and friends over to Leonard Street. The cocktails are delicious, the walls are decked out in striking contemporary art, and they claim to have the best brunch in Shoreditch!

Don't leave before you try your hand at a fierce game of ping pong.

Walking time from the office:
450m (6 min walk)

Visit: 100-106 Leonard St
Call: 020 7684 8618



DREAMBAGS JAGUARSHOES

It's name derives from the 1980's bag and shoe wholesalers that once occupied the building, whose signage still adorns the shop front. The walls of this buzzing café-bar are laden with eclectic art available to purchase. It's very cool indeed and, after a few pints of their very own craft beer, you may find yourself in their bare-brick basement busting moves to great tunes.



Don't leave before you sink a Disco Espresso.

Walking time from the office:
900m (12 min walk)

Visit: 32-36 Kingsland Rd
Call: 0207 6830912



THE QUEEN OF HOXTON

Our delightful neighbour is also a Shoreditch landmark – the place for drinks over three levels, including the most idyllic rooftop around. Be sure to keep track of their calendar of live music, workshops and great happenings throughout the year.

Don't leave before you watch a movie at their open air roof cinema.

Walking time from the office:

75m (1 min walk)

Visit: 1 Curtain Rd

Call: 020 7422 0958



PLATFORM

Platform is London's first dedicated video games and esports bar and restaurant. Platform believes that video games, like all good things in life, are better when shared with friends, pizza and a few drinks.

Gather your friends and play your favourite multiplayer games on their bookable console booths. Challenge the strength of your friendships over a game of Mario Kart or nail that teampay on FIFA. Squad up, rent our powerful gaming PCs, and crush your frenemies on our esports stage, sponsored by our official partner ESL: the world's leading platform for esports. They've designed a venue that everyone can enjoy regardless of skill level. They give newcomers a helping hand, and veterans a steely glare and knowing nod.



Don't leave before you play one of their retro games on the classic super Nintendo

Walking time from the office:

400m (5 min walk)

Visit: 2b Worship St, Finsbury, London EC2A 2AH

Call: 020 3319 9640

HAWKSMOOR | SPITALFIELDS BAR

Winner of the Best International Restaurant Bar at Tales of the Cocktail 2016 & 2019, the Oscars of the bar industry. A cocktail bar located close to Liverpool Street and Old Street, just off Shoreditch High Street, serving classics, remakes of cocktails and bar food

After winning Best International Restaurant Bar, at Tales of the Cocktail in New Orleans for the second time, Hawksmoor's bar team decided to rip it all off and start again. This has led them to create one of the most inspiring cocktail menus. They travelled from Northumberland to Copenhagen, Stockholm to Haggerston looking for inspiration; achieving the most delicious drink list, making it more creative, more sustainable and more technical, but more importantly, as ever with Hawksmoor, it's really fun. If you're looking to line the stomach whilst you make your way through the new cocktail list, Hawksmoor's Executive Head Chef, Matt Brown (a former Head Chef of two restaurants with three Michelin stars), has created the perfect bar food to go with the drinks.



Don't leave before you try the Fuller Fat Old Fashioned.

Walking time from the office:
850m (11 min walk)

Visit: 57B Commercial Street, London, E1 6BJ
Call: 020 7426 4856





BLACK SHEEP COFFEE

Desired taste and level of punch weighs on your choice of bean at Black Sheep Coffee, located on Worship Street. Be prepared for a strong-but-silky blend whatever your selection - these guys know how to make your coffee taste incredible every time. The sweetener is this place transforms itself into an after-work bar where a range of draught beers and cocktails come into play.



Don't leave before you chat to some of the coolest baristas in town.

Walking time from the office:
230m (3min walk)

Visit: Principal Place 115 Worship St



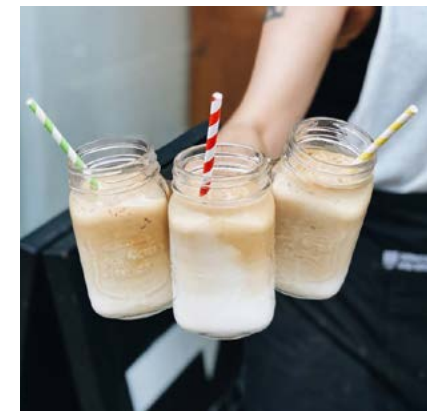
DEPARTMENT OF COFFEE AND SOCIAL AFFAIRS

These guys take their coffee as seriously as their name suggests. The cool, minimal interior will help you forget you're at bustling Bishopsgate.

Don't leave before you sharpen your coffee mind.

Walking time from the office:
300m (3 min walk)

Visit: 8 & 9, 201 Bishopsgate

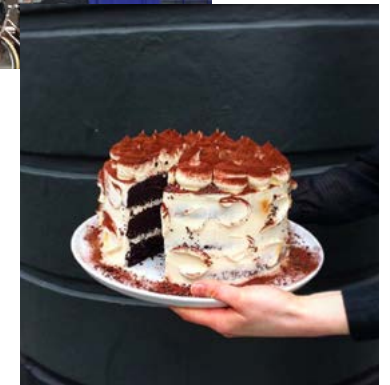




FRANZE & EVANS



This classic Italian Café will refuel you in no time. Pair your coffee with seasonal, ever-changing sandwiches, salads and quiches from the entirely enticing counter or pop in on the weekend to try their brunch menu, they are famous for it!"



Don't leave before you try their lemon and courgette cake.

Walking time from the office:
850m (11 min walk)

Visit: 101 Redchurch St
Call: 020 7033 1910





SHOREDITCH GRIND

Shoreditch Grind is an espresso bar, restaurant and late night cocktail bar with a bustling vibe and fast paced soundtrack. Situated on old street roundabout since 2011, Shoreditch Grind has become a staple in the neighbour



Don't leave before you order a bottomless brunch.

Walking time from the office:
900m (11 min walk)

Visit: 213 Old St
Call: 020 7490 7490

ATTENDANT SHOREDITCH

Clocking in late? Head to the Attendant to start your day right with their expert approved coffee and ethically sourced breakfast. The space is airy and relaxed. We love it.



Don't leave before you check out the living plant wall.

Walking time from the office:
550m (9 min walk)

Visit: 74 Great Eastern St
Call: 020 7729 0052



Necessities

BOOTS

Boots

London Liverpool Street Station 11
Octagon Arcade

Walking time from the office:

500m (6 minute walk)

TESCO

Tesco Express

Tesco Express, 1-23 City Rd, London

Walking time from the office:

500m (6 minute walk)

CARDS GALORE

Cards Galore

23 Liverpool St

Walking time from the office:

500m (6 minute walk)

POST OFFICE

Post Office

205 Old St

Walking time from the office:

1km (12 minute walk)

Sleep



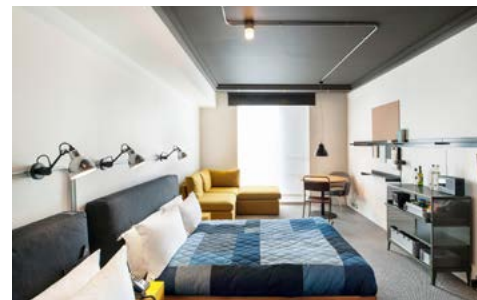
BOUNDARY PROJECT

2-4 Boundary St

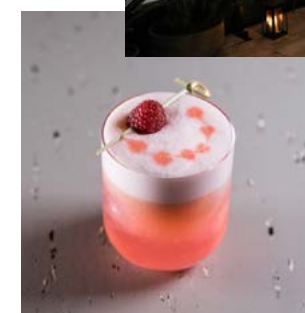
For a more boutique stay in Shoreditch make your way to The Boundary Project, housed within a converted Victorian warehouse. Housing their eateries, Albion café, Boundary Rooftop Bar & Grill, TraTra pop-up restaurant, as well private event space, The Vault, whether you fancy charcuterie, British modern classics, something from the rooftop grill, or just a place to rest your head, you'll be well catered for.

ACE HOTEL LONDON

100 Shoreditch High St



Creatives, art lovers, jetsetters and more flock to Ace for beautiful design and unbeatable ambience. The in-house events programme is fabulous, and there's a florist onsite, too.



Book: 020 7613 9800

www.acehotel.com/london

Walking time from the office:

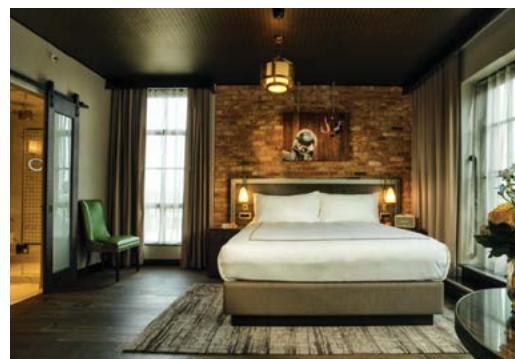
650m (8 min walk)

THE CURTAIN

45 Curtain Rd



For a piece of luxury in the heart of Shoreditch, visit The Curtain's 5 star hotel, boasting bespoke artwork and a rooftop pool. Their 6000 ft event space will have you question ever leaving.



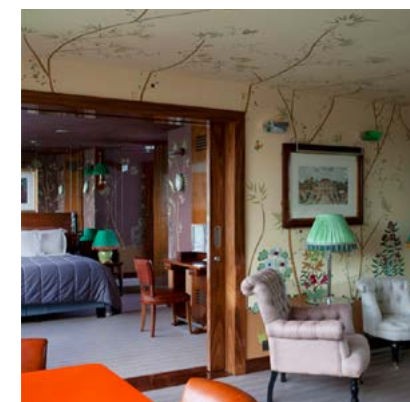
Book: 020 3146 4545
thecurtain.com/accommodation/

Walking time from the office:
 230m (2 min walk)



Book: 020 7729 1051
boundary.london/rooms/

Walking time from the office:
 450m (5 min walk)





CITIZEN M

6 Holywell Ln



Citizen M's modern art makes this the top stay for creatives in Shoreditch. Grab a book and a drink before settling down on their wonderful balcony overlooking Great Eastern Street and the abandoned tube carriages of music venue, Village Underground.



Book: 020 3519 4840
www.citizenm.com/london-shoreditch-opening

Walking time from the office:
 450m (5 min walk)

THE HOXTON HOTEL

81 Great Eastern St



The Hoxton Hotel's Shoebox, Cosy and Roomy bedrooms complete with industrial details befitting of E1 and stylish monochrome bathrooms will make you want to call it home. You could even request a Concept room for a lucky, unforgettable stay.

Book:

thehoxton.com/london/shoreditch/hotels

Walking time from the office:

550m (7 min walk)



The arts



RICH MIX

Visit: 35-47 Bethnal Green Rd

Call: 020 7613 7498

Walking time from the office:
800m (10 minute walk)

Opening Hours:
Mon - Fri: 9 AM to late
Sat - Sun: 10 AM to late

WHITECHAPEL GALLERY

Visit: 77-82 Whitechapel High St

Call: 020 7522 7888

Walking time from the office:
1.3km (16 minute walk)

Opening Hours:
Mon: CLOSED
Tue - Sun: 11 AM - 6 PM



BARBICAN CENTRE

Visit: Silk St

Call: 020 7638 8891

Walking time from the office:
1km (13 minute walk)

Opening Hours:
Mon - Sat: 10 AM - 8 PM
Sun: 11 AM - 8 PM

Over and out.
