

MINDSPACE

Washington

# THE GUIDE



The essential neighborhood guide  
for the curious Mindspacer.



## **WELCOME TO THE HIGH LIFE**

The Mindspace experience extends far beyond the corners of your work desk. It is one of discovery, culture immersion, balance, and high quality living.

This little pocket book is here to help you see, taste, feel, celebrate, and unlock the best of what your Mindspace neighborhood is hiding up its sleeves. We encourage you to invite your fellow Mindspacers to join you.

*At your service,  
The Mindspace Team*

MINDSPACE

Mindspace neighborhood map

● EAT

- 1 Maketto
- 2 Bresca
- 3 Union Kitchen
- 4 Barcelona Wine Bar
- 5 Le Diplomate
- 6 Hazel
- 7 Lapis
- 8 The Dabney

● COFFEE

- 15 Compass Coffee
- 16 Pleasant Pops
- 17 Joe and the Juice
- 18 La Colombe Coffee Roasters
- 19 Slipstream
- 20 Dolcezza

● SLEEP

- 24 The Line Hotel
- 25 The Willard InterContinental Hotel
- 26 Kimpton Hotel Palomar
- 27 Eaton Hotel
- 28 Kimpton Mason & Rook Hotel

● AFTER HOURS

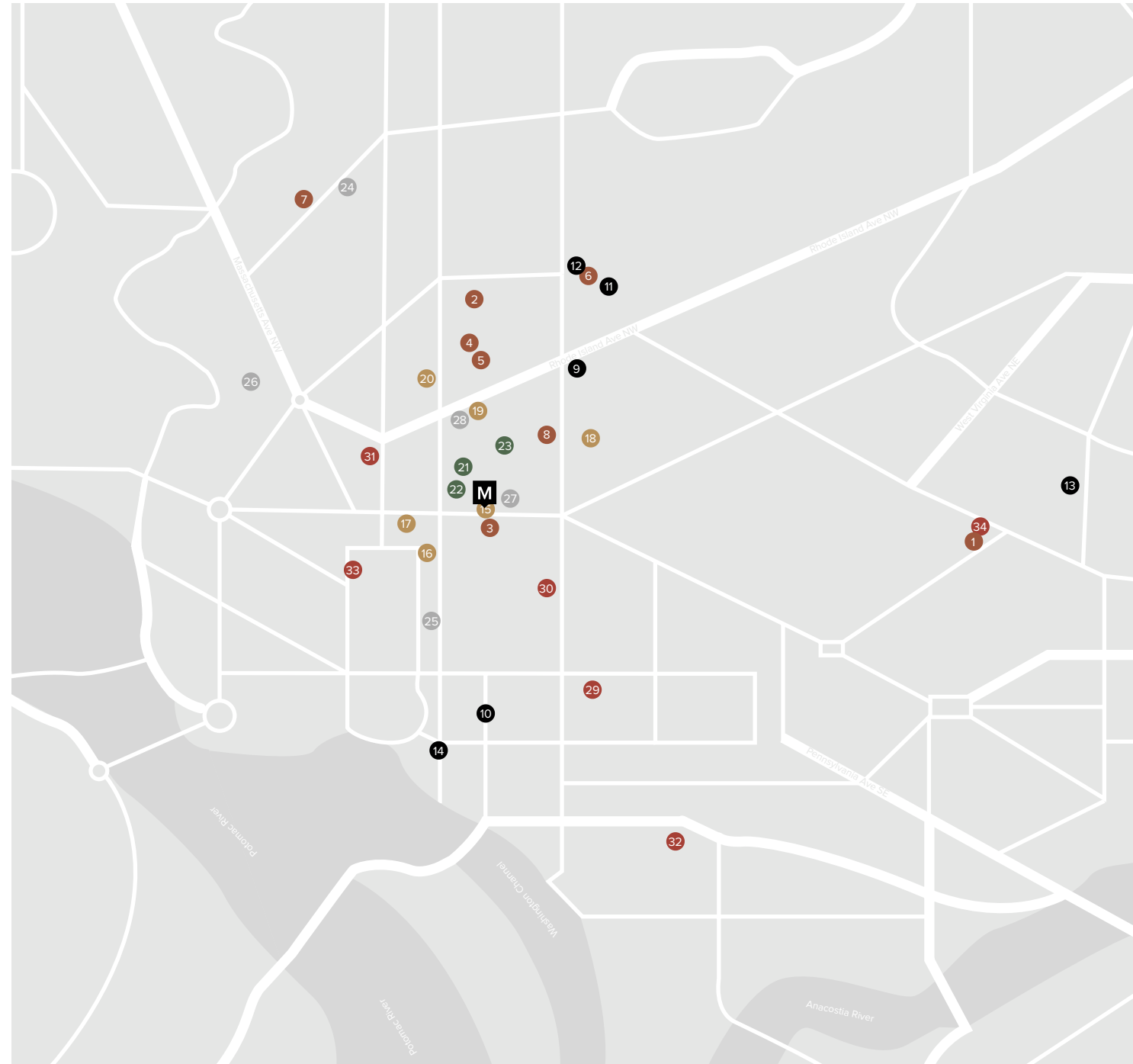
- 9 Dacha Beer Garden
- 10 MXDC
- 11 Flash
- 12 9:30 Club
- 13 Jimmy Valentine's Lonely Hearts Club
- 14 POV Rooftop

● NECESSITIES

- 21 CVS Pharmacy
- 22 US Postal Service
- 23 Streets Market

● EXPLORE THE ARTS

- 29 National Gallery of Art
- 30 National Portrait Gallery
- 31 National Geographic Museum
- 32 Culture House DC
- 33 Renwick Gallery
- 34 Gallery O on H





## MAKETTO

Maketto is a hotspot for all things cool. It is a 6,000 square foot communal marketplace spread across two buildings with a courtyard, a roof deck, and a catwalk that connects the different spaces together. Coffee, pastries, dinner, wine, cafe, shoes. You name it.



Don't leave before you try the fried chicken.

---

Distance from Mindspace:  
2.8 miles (17 minute taxi ride)

---

Visit: 1351 H Street NE  
Call: 202 838 9972



## BRESCA

This is modern bistronomy - casual fine dining where experimentation is not only encouraged, but celebrated. Experience cuisine that's always evolving in a setting that's forever inviting. Drink with delight at the bar, make the menu your own, let the exploration unfold.



Don't leave before you sip on a Bee's  
Knee's cocktail.

---

Distance from Mindspace:  
1 mile (20 minute walk)

---

Visit: 1906 14th Street  
Call: 202 518 7926



Don't leave before you Tour the kitchen area.

---

Distance from Mindspace:  
Downstairs (in the building)

---

Visit: One Franklin Square  
Call: 202 792 7850

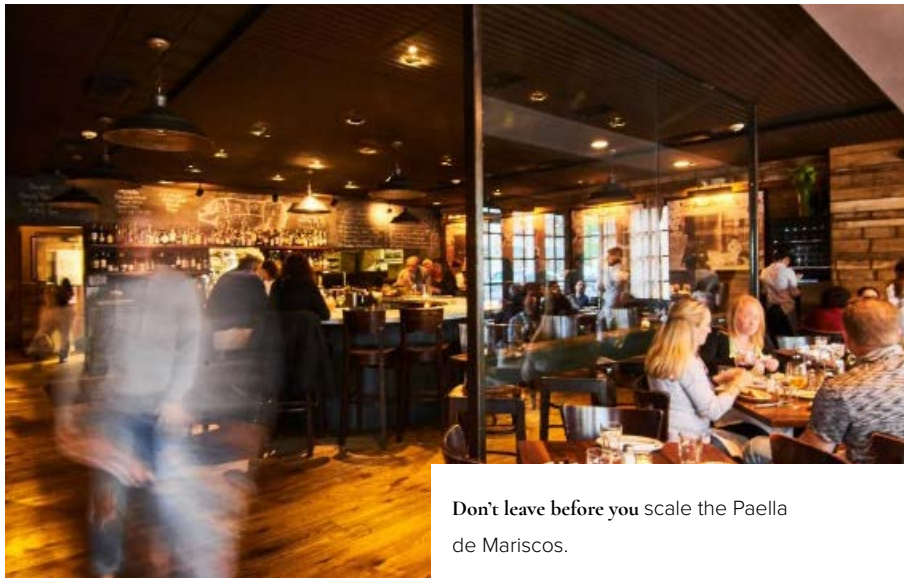


## UNION KITCHEN

Union Kitchen Grocery brings local products to local shelves. Visit the stores to find all of the local favorites from our Accelerator Members and everyday classics - coffee, prepared foods, snacks, and much more!

## BARCELONA WINE BAR

You're in D.C., but you feel like taking a mental vacation to the beautiful Catalonian coast of Barcelona. Look no further. In a most serene setting, enjoy a wonderful range of charcuterie, tapas, and paella. The wine list features over 400 bottles - come thirsty.



Don't leave before you scale the Paella de Mariscos.

Distance from MindSpace:  
0.8 miles (16 min walk)

Visit: 1622 14th Street NW  
Call: 202 588 5500

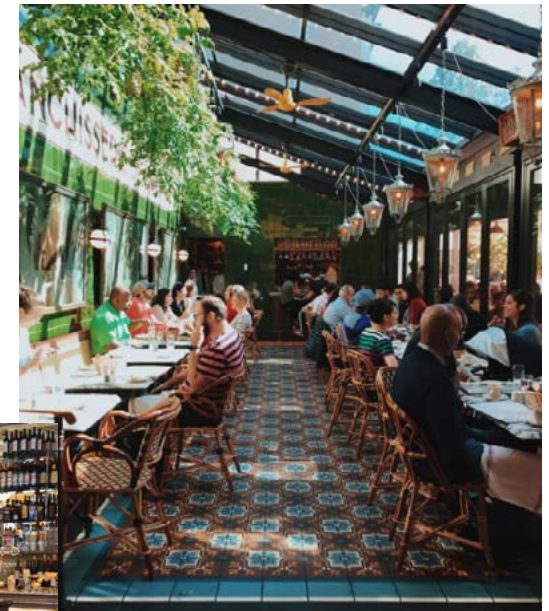
## LE DIPLOMATE

Le Diplomate pays sincere homage to French café culture, providing a comfortable, versatile gathering place for all. Within a historic structure that harnesses the artful spirit of a Parisian brasserie, the interior and exterior of Le Diplomate imbues every meal with a sweeping sense of European flair.

Don't leave before you buy a freshly baked baguette to go.

Distance from MindSpace:  
0.7 miles (15 minute walk)

Visit: 1601 14th Street NW  
Call: 202 332 3333

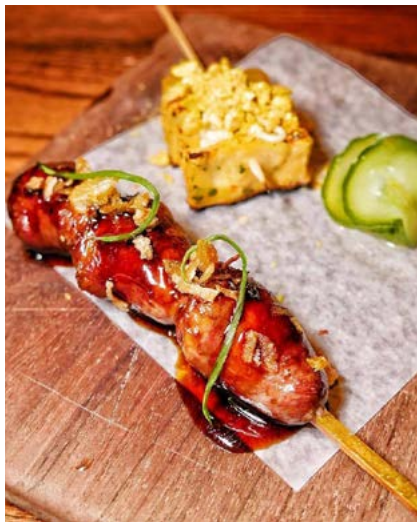




Don't leave before you finish every last crumb of Grandma's Zucchini Bread.

Distance from Mindspace:  
1.4 miles (11 minute taxi ride)

Visit: 808 V Street NW  
Call: 202 847 4980



## HAZEL

Whether you go for drinks outdoors or a feast in the amazing dining room, you'll be dining on a menu as global as Mindspace. Each dish has its own unique story, all of which are meant to be shared.







## LAPIS

Lapis is one of those places that just stays with you after you leave. An Afghan bistro, art gallery, café, lounge, and bar, it combines delicious ethnic flavors with intricate design. If you're looking for an extremely unique experience with a huge cool factor that won't break the bank, get yourself to Lapis.

**Don't leave before you** order the mantoo shrimp dumplings.

---

**Distance from MindSpace:**  
1.9 miles (15 minute taxi ride)

---

**Visit:** 1847 Columbia Rd. NW  
**Call:** 202 299 9630



## THE DABNEY

The chefs at The Dabney are all about quality food made using diverse ingredients. Working intimately with farmers and purveyors to source only the best from the Mid-Atlantic region, they cook over embers in a wood-burning hearth. If you arrive just after 5:30pm, you'll be able to snag a table without a reservation. Otherwise grab a signature cocktail at the fabulous Columbia Room next door.



**Don't leave before you** take a peek Blagden Alley's impressive street art.

---

**Distance from MindSpace:**  
0.6 miles (13 minute walk)

---

**Visit:** 122 Blagden Alley NW  
**Call:** 202 450 1015

*After hours*



## DACHA BEER GARDEN

In a beautiful outdoor garden, enjoy a carefully curated menu of German, Belgian and American craft beers, local meads and ciders, unique cocktails and wines. The seasonal food menu is inspired by traditional Bavarian beer gardens with an eye for local sourcing and farm-to-table authenticity. Dog and family friendly.

Don't leave before you take in the gorgeous mural.

Distance from Mindspace:  
0.9 miles (20 minute walk)

Visit: 1600 7th Street NW  
Call: 202 350 9888



## MXDC

Bi-level, rustic-modern pick for Mexican staples reimaged by the celeb chef plus tequilas galore.



Don't leave before you try the Churros

Distance from Mindspace:  
0.6 miles (9 minute walk)

Visit: 600 14th Street NW  
Call: 202 393-1900



## POV ROOFTOP

W Hotel's rooftop lounge drawing a hip crowd with stylish decor, seasonal cocktails & city views.



## FLASH

If you like to dance all night à la Berlin nightlife, then Flash is the place for you. Besides being the seemingly only venue that sells Club Matte, Flash has the best sound system (Funktion One speakers) in the city. The best international electronic music artists play on a consistent basis here and there's a retractable rooftop (disco ball included) - a game changer on Sundays in the summer.

Don't leave before you ask for a turn at the photobooth.

Distance from MindSpace:  
1.5 miles (10 minute taxi ride)

Visit: 645 Florida Ave. NW  
Call: 202 827 8791



Don't leave before you try the Bi-Partisan cocktail

Distance from MindSpace:  
0.5 miles (11 minute walk)

Visit: 515 15th Street NW  
Call: 202 661 2437





## 9:30 CLUB

Are concerts your thing? This music venue is easily one of the coolest in D.C. with an enormous balcony area and a wide, open downstairs. Grab a partner or, if you're feeling adventurous, go on your own - either way you'll be leaving with a healthy level of serotonin.

**Don't leave before you** dance the night away.

---

**Distance from MindSpace:**  
1.5 miles (9 minute taxi ride)

---

**Visit:** 815 V Street NW  
**Call:** 202 265 0930



## JIMMY VALENTINE'S LONELY HEARTS CLUB

Jimmy Valentine's Lonely Hearts Club is everything you want in a local dive bar: low prices, kitschy decor, great people, and awesome local house music DJs. It's a little off the beaten path, but isn't that where all the best things happen? This is a true hidden gem - no signage, just look out for the pink neon light.

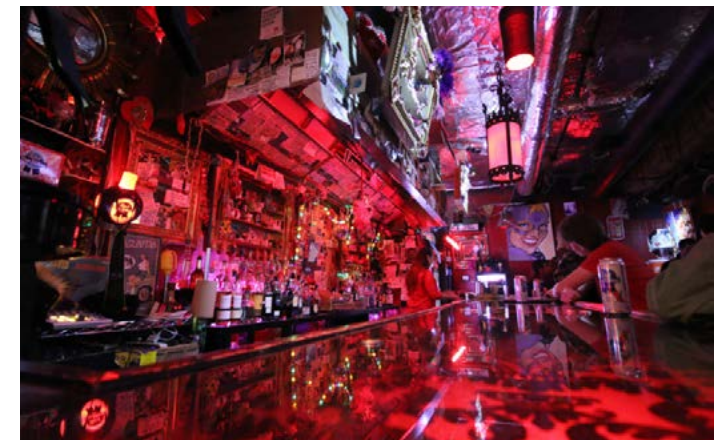
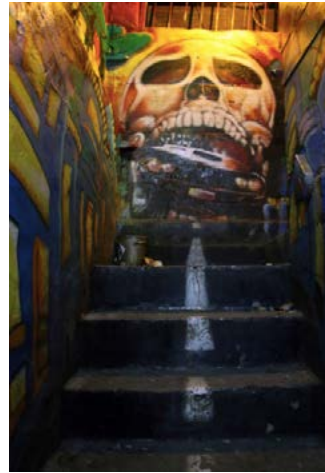
**Don't leave before you** take a closer look at the art and furry walls.

---

**Distance from MindSpace:**  
3.7 miles (15 minute taxi ride)

---

**Visit:** 1103 Bladensburg Rd. NE  
**Call:** Don't. Just show up ready to have a good time.



# Coffee



*Pleasant Pops*



## COMPASS COFFEE

REAL. GOOD. COFFEE. It's local, it's delicious, and it's our partner. Go have a cup and fall in love.

Don't leave before you sink your teeth into Poppy's stuffed bagels.

---

Distance from Mindspace:  
Downstairs (in the building)

---

Visit: 1301 K St NW  
Call: 202 838 3139

## PLEASANT POPS

This is a coffee and gourmet goods shop serving locally sourced bites and Mexican popsicles in urban-rustic digs.

Don't leave before you get stuck into the deliciously healthy 'Street Corn' bowl.

---

Distance from Mindspace:  
0.3 miles (7 minute walk)

---

Visit: 731 15th Street NW  
Call: 202 347 0938



Dolcezza



## JOE AND THE JUICE

Juices, shakes, 'joegurts', shots, sandwiches, and coffee. Joe and the Juice feels like an uplifting health zone, with concoctions that will always set you straight. From morning mixes to turmeric and ginger immune boosters, they've got all the things you need on a menu to nurture your body.

**Don't leave before you** take notice of the awesome light design while sipping on a Herb Tonic.

**Distance from Mindspace:**  
0.2 miles (5 minute walk)

**Visit:** 1500 K Street NW

## LA COLOMBE COFFEE ROASTERS

You've probably seen this specialty coffee roaster before. Well, they're very much dedicated to making your coffee life better and they are the first ever to introduce draft cold latte in a can. Mmm!

**Don't leave before you** drink the cold brew.

**Distance from Mindspace:**  
0.6 miles (12 minute walk)

**Visit:** 924 Blagden Alley NW  
**Call:** (202) 289 4850

## SLIPSTREAM

This bright cafe has walnut bar and serves pour-over coffee all day long. At night, the baristas swap out for barmen stirring delicious cocktails. There's light fare, too.

**Don't leave before you** order the brunch.

**Distance from Mindspace:**  
0.5 miles (10 minute walk)

**Visit:** 1333 14th Street NW  
**Call:** 202 450 2216

## DOLCEZZA

This branch of D.C.'s gelati empire whips up delicious round of seasonal, locally sourced sorbet and sundaes. Best of all, they've now got this new nitro cold-brewed iced coffee. Go there for a sweet, sweet time.

**Don't leave before you** get your caffeine fix.

**Distance from Mindspace:**  
0.5 miles (10 minute walk)

**Visit:** 1418 14th St NW  
**Call:** (202) 817 3900

# Necessities

## PHARMACY

### **CVS Pharmacy**

CVS, 1199 Vermont Ave. NW

Distance from Mindspace:

0.2 Miles (3 minute walk)

## POSTAL SERVICE

### **US Postal Service**

1400 L Street NW Lbby 2

Distance from Mindspace:

0.1 miles (2 minute walk)

## SUPERMARKET

### **Streets Market**

1221 Massachusetts Ave. NW

Distance from Mindspace:

0.2 miles (5 minute walk)



# Sleep

## THE LINE HOTEL

---

1770 Euclid Street NW



Inspired by The District and housed inside a 110-year old historic church, the LINE DC is the product of a community effort by local chefs, bartenders, artists, and designers. Full Service Radio broadcasts live from the hotel lobby daily while chefs Spike Gjerde of Baltimore's Woodberry Kitchen and Erik Bruner-Yang of D.C.'s Maketto deliver an American and international culinary experience. Amplified by Adams Morgan's eclectic personality, the LINE DC delivers a richly rounded experience.

---

**Book:** 202 588 0525

**Distance from Mindspace:**  
1.8 Miles (15 minute taxi drive)





Book: 202 628 9100

Distance from Mindspace:  
0.4 Miles (9 minute walk)

## THE WILLARD INTERCONTINENTAL HOTEL

1401 Pennsylvania Ave. NW

For all you history buffs! Since 1818, the Willard InterContinental has played host to the world's social and political elite. An iconic hotel, often referred to as the 'Residence of Presidents', The Willard has welcomed U.S. leaders, foreign dignitaries and celebrities alike.



## KIMPTON HOTEL PALOMAR

2121 P Street NW



A rich, modern, urban refuge, the Dupont Circle hotel is marked by alluring artistic design, refined sensibilities, and meticulous attention to detail. With an amazing in-house Italian restaurant, Urbana, a superb downtown location, top-notch service and amenities, and an engaging social space created for style-conscious folks, Kimpton Hotel Palomar is the place for our Mindspacers.



**Book:** 202 448 1800

**Distance from Mindspace:**  
1.4 miles (10 minute taxi ride)

# EATON HOTEL

1201 K Street NW



Setting the stage for residing guests, locals and house members to congregate around creativity and consciousness-building, Eaton Hotel offers provocative content and programming. There is a radical approach to food and beverage, wellness and the arts.

Eaton Hotel pioneers an interdisciplinary hotel experience to travelers seeking inspiration, innovation and impact. Setting the stage for residing guests, locals and house members to congregate around creativity and consciousness-building, it offers provocative content and programming. There is a radical approach to food and beverage, wellness and the arts.

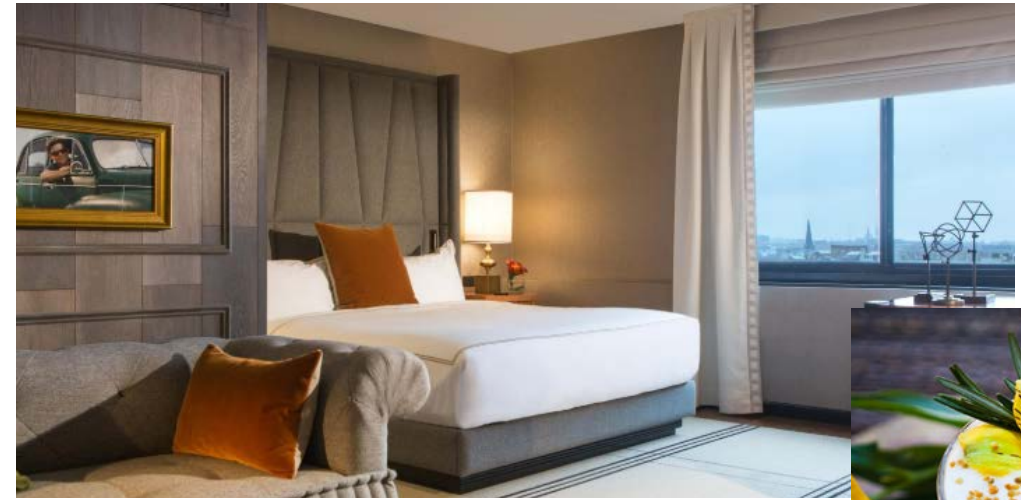


**Book:** 202 289 7600

**Distance from MindSpace:**  
0.1 miles (2 minute walk)

# KIMPTON MASON & ROOK HOTEL

1430 Rhode Island Ave. NW



It's time to feel like you've just arrived at your friend's cool urban home. Situated on a tree-lined street just steps from the bustling 14th Street action, guests come for the prime location and the creative spaces that host meetings and events. An innovative cuisine-driven cocktail bar - Radiator - and a seasonal rooftop oasis are further reasons to frequent this stylized perch.

**Book:** 202 742 3100

**Distance from MindSpace:**  
0.6 miles (12 minute walk)



# The arts



## NATIONAL GALLERY OF ART

**Visit:** 6th & Constitution Ave. NW

**Opening Hours:** Mon-Sat 10 AM-5 PM;  
Sun 11 AM-6 PM

**Call:** (202) 737-4215

**Distance from Mindspace:**  
1.2 miles (25 minute walk)

## NATIONAL PORTRAIT GALLERY

**Visit:** 8th Street NW & F Street NW

**Opening Hours:** Sun-Thu 9 AM-6 PM; Fri 10 AM-3 PM

**Call:** 202 633 8300

**Distance from Mindspace:**  
0.7 miles (14 minute walk)

\*All Smithsonian Institute museums in D.C. are free.



## NATIONAL GEOGRAPHIC MUSEUM

---

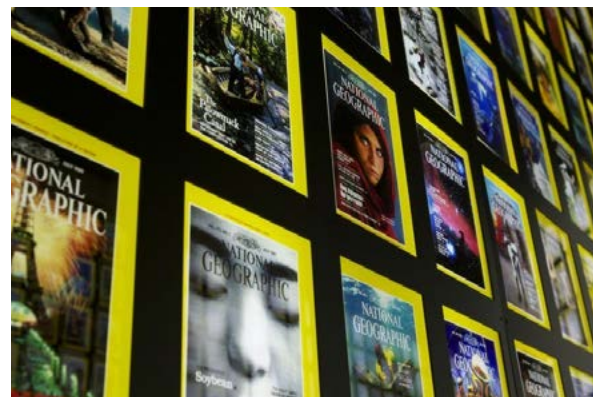
**Visit:** 1145 17th Street NW

**Opening Hours:** Sat, Sun 12-5 PM; Wed 5-8 PM

**Call:** 202 857 7700

**Distance from Mindspace:**

2.8 miles (20 minute taxi ride)



*Culture House DC*



## CULTURE HOUSE DC

---

**Visit:** M700 Delaware Ave. SW

**Opening Hours:** Sat, Sun 12-5 PM; Wed 5-8 PM

**Call:** 202 554 0103

**Distance from Mindspace:**

3.5 miles (11 minute taxi ride)

## RENWICK GALLERY

---

Visit: 1661 Pennsylvania Ave. NW

Opening Hours: Daily 10 AM-5:30 PM

Call: 202 633 7970

Distance from Mindspace:  
0.6 miles (13 minute walk)



*Gallery O on H*

## GALLERY O ON H

---

Visit: 1354 H Street NE

Call: 202 649 0210

Distance from Mindspace:  
2.5 miles (14 minute taxi ride)



*Over and out.*
