



**PHILANTHROPY REPORT
2017**

MTC Headquarters

252 Sturt St
Southbank VIC 3006
03 8688 0900

Southbank Theatre

140 Southbank Blvd
Southbank VIC 3006
03 8688 0800

mtc.com.au

Venues

Throughout 2017 MTC performed its Melbourne season of plays at Southbank Theatre, The Sumner and The Lawler, and the Fairfax Studio and Playhouse at Arts Centre Melbourne.

Managing Editor Jayne Lovelock

Graphic Designer Helena Turinski

Cover *Macbeth* (2017): Geraldine Hakewell. Photo by Jeff Busby.

Other photography Tim Grey, Benjamin Healley, Mandy Jones and Heath Warwick

Melbourne Theatre Company acknowledges the Yalukit Willam Peoples of the Boon Wurrung, the Traditional Owners of the land on which Southbank Theatre and MTC HQ stand, and we pay our respects to Melbourne's First Peoples, to their ancestors past and present, and to our shared future.

MTC is a department of the University of Melbourne.



MTC is assisted by the Commonwealth Government through the Australia Council, its arts funding and advisory body, and by the State Government of Victoria through Creative Victoria.



MTC is a member of Live Performance Australia and the Australian Major Performing Arts Group.



CONTENTS

- 4 2017 Highlights
- 6 Foundation Chair's Report
- 8 Foundation Board
- 10 Artistic Director's Report
- 12 Executive Director's Report
- 14 Philanthropy Director's Report
- 16 MTC Lifetime Patron
- 18 Donor Preview and Thank You Event
- 21 Donor Events at MTC

Donations in Action

- 26 Sharing the Light
- 30 Regional Enrichment
- 32 MTC Ambassadors
- 34 Betty Amsden Youth Scholarship Course
- 36 Women in Theatre
- 38 MTC Education Giving Circle
- 40 Literary Development
- 42 NEXT STAGE
- 34 **2017 Financial Report**
- 36 **MTC's Circles of Giving**

2017 IN NUMBERS



555

total performances

529

actors, creatives and industry professionals employed

3

new Australian plays on MTC stages



8

new Australian plays developed through Cybec Electric

3

NEXT STAGE Writers in Residence at MTC

22

playwrights under commission including seven through NEXT STAGE



418

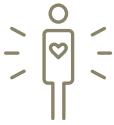
young people participated in VCE or show related workshops

119

theatre practitioners participated in Creative Development Workshops

15

Year 11 MTC Ambassadors provided with unique exposure to the Company's inner workings



13%

of total revenue
came from private
donations

14

young people provided
with a work experience
placement at MTC

29

industry professionals
mentored through
secondments, Women
in Theatre, and
Assistant Directors
Programs



3

productions visited
nine regional and
interstate venues
on tour

3,000

young people saw
Melbourne Talam
in Melbourne and
during it's 2000km
regional tour

1,309

students from schools
in regional Victoria saw
an MTC Show in
Melbourne with the
help of a travel subsidy



9,940

schools tickets
to MTC productions

2,898

\$5 subsidised tickets
for students at 80
disadvantaged schools

1,800

students gained
behind-the-scenes
insights through
a pre-show talk,
post-show Q&A, or
tour of MTC's
Headquarters

FOUNDATION CHAIR'S REPORT

JANE HANSEN



2017 was an exciting time for the MTC Foundation, and in my second year as the inaugural Chair, it was every bit as thrilling, challenging and inspiring as the first.

We achieved a great deal in commencing many new activities, strengthening new and existing relationships and making considerable strides towards long-term sustainability. All with you, our wonderful community of donors by our side. It is your ongoing support that underpins and inspires all that we do.

Through your generosity we are able to respond to the community's needs and provide pathways into future Australian theatre roles. Funding of long-term, high impact initiatives such as our artist development programs, means that MTC plays a vital leadership role in creating Australian theatre that is stimulating, accessible and unique.

In 2017, this was particularly evident in the launch of our landmark NEXT STAGE Writers' Program. Over five years, NEXT STAGE will enable MTC to actively support up to 35 new and established Australian writers. After

commencing in June, our three NEXT STAGE resident writers have brought a fresh wave of creative energy to the MTC team; while our seven commissioned writers are all well underway on the first draft of their new Australian plays.

The ambitious scope of the NEXT STAGE Writers' Program posed a formidable target for the Company and the Foundation in the requirement to raise \$2.3 million, matched by MTC, in just under one year. However, the commitment of the 18 visionary philanthropists comprising our Playwrights Giving Circle confirmed our belief that developing an Australian voice onstage was of great urgency and significance to our cultural landscape.

An essential part of ensuring a future for Australian theatre is enabling the next generation of artists and theatre-goers access to world-class creative experiences.

In May we established MTC's Education Giving Circle, a passionate community of donors keen to expand MTC's capacity to provide theatre experiences for the next generation. For many recipients it represents their first interaction with live storytelling, often inspiring a life-long love of the creative arts.

We also renamed our intensive-drama course, the Betty Amsden Youth Scholarship Course, in honour of the legacy gift donated by the late, great prominent arts philanthropist. While attending the final session and performance of the course in September and listening to the participants' reflections on their time at MTC, I was struck by the impact the experience had on both the students and their families.

This sentiment was echoed at the end-of-year performance for our 2017 Indigenous Scholarship Program where the participants, some of whom had travelled from as far as Halls Gap, spoke of their increased confidence to pursue study and careers in the performing arts as a result of this initiative. This scholarship is part of MTC's broader *Sharing the Light* initiative, supported by the Crown Resorts Foundation and Packer Family Foundation, which aims to remove the barriers some families face in being able to attend a live performance.

MTC's commitment to equality in all guises is reflected in our philanthropic planning, often focusing on a particular area of concern that resonates with the broader community. We are extremely fortunate to be in the company of donors who share this commitment and whose support enables us to provide assistance in these areas.

The Women in Theatre Giving Circle, set up in 2016 to sustain our Women in Theatre Program, expanded significantly last year, with a 50 per cent increase in Giving Circle members. This inspiring group of donors are keen to ensure that each cohort of program participants has an essential year of

support at MTC, allowing them to seize new opportunities and combat gender inequality in the arts.

If MTC is to continue to prosper and provide the range of quality plays, programs and opportunities that we do today, our Foundation must play a key role in securing a financially stable future for the Company. By building an endowment fund, MTC will be able to provide a stable source of revenue over the longer term through careful investment of the corpus and utilising the annual returns from that capital. Last year we made great headway in solidifying our plans for growing the endowment fund and progressing this vital investment for MTC's future.

We are only able to achieve all that we do through a team effort and I must acknowledge and thank the hard work of my fellow Foundation Board Members; as well as Artistic Director and CEO Brett Sheehy, Executive Director and co-CEO Virginia Lovett and the Development Department, led by Jayne Lovelock, throughout the year.

Most importantly, however, I must again thank you, our loyal donors. The many achievements outlined in our 2017 Philanthropy Report are testament to the commitment and shared vision of our dedicated community of donors, without you none of this would be possible.

Thank you.

MTC FOUNDATION BOARD

Jane Hansen (Chair)

Inaugural Chair of the MTC Foundation; Deputy Chancellor and Member of the University Council, Deputy Chair of Believe Campaign and Member of Humanities Foundation Board of University of Melbourne; Board Member of the Lord Mayor's Charitable Foundation; Chair and CEO of the Hansen Little Foundation; previously on the Boards of the MCG Trust, the State Sport Centres Trust, the Federal body of Athletics Australia and the Foundation of the State Library of Victoria. MTC Foundation Board Chair since March 2015.

Terry Bracks AM

Founding Chair of Western Chances; Patron of Heide Gallery and the Williamstown Literary Festival; formerly a Board Member of Breast Cancer Network Australia, the National Film and Sound Archive, the Australian Children's Television Foundation; and a past Trustee of the Victorian Arts Centre Trust. MTC Foundation Board Member since March 2015.

Fiona Griffiths

Board Member of Ruyton Girls' School; Chair of Ruyton Girls' School Foundation Board; former School Council President Auburn Primary School; formerly ANZ Group Strategy, ANZ Legal Group and a senior associate at DLA Phillips Fox. MTC Foundation Board Member since March 2015.

Janette Kendall

Non-executive director of Costa Group Nine Entertainment and Wellcom Worldwide; previously on the boards of the Melbourne International Festival of the Arts, AURL Foodworks, Clemenger BBDO; former Senior Vice President at Galaxy Entertainment Group, China. MTC Board Member since February 2015. MTC Foundation Board Member since March 2015.

Dr Sam Margis

Director, Founder and Consultant Perinatal Psychiatrist at the NEST group of Family Clinics; Visiting specialist Psychiatrist Cabrini Hospital; Graduate of Monash University Medical School; Fellow of Royal Australian and New Zealand College of Psychiatrists; Board Member of the Mercy Health Foundation. MTC Foundation Board Member since January 2016

Louise Myer

Founding Director of The Myer Stores Community Fund; previous Member of Asialink Board; 2013 Relais & Chateaux Woman of the Year; Founder and owner, Whare Kea Lodge, New Zealand; trained at La Varenne, Paris; prominent Melbourne Philanthropist and generous supporters of the Arts. MTC Foundation Board Member since January 2016.

(From left) Louise Myer, Brett Sheehy AO, Leigh O'Neill, Hilary Scott, Virginia Lovett, Richard Tegoni, Jane Hansen, Janette Kendall, Terry Bracks, Dr Sam Margis, and Fiona Griffiths.



Leigh O'Neill

Executive General Manager, Business Direct and Small Business in Business and Private Banking NAB; Chair of Chunky Move; formerly General Manager for NAB Private Wealth in Victoria and Board Member for the Griffin Theatre Company and the Ilhan Food Allergy Foundation. MTC Foundation Board Member since March 2015.

Hilary Scott

Corporate Counsel, Kin Group Pty Ltd (formerly including Pact Group Holdings). Previously; Legal Counsel, Pact Group Holdings; Legal Counsel, Symbion formerly Mayne Group Limited; Lawyer, Deacons (now Norton Rose Fulbright). MTC Foundation Board Member since January 2016.

Richard Tegoni

Chief Operating Officer and Company Secretary of Melbourne University Publishing Ltd.; Executive Chairman at SECOS Group Limited (aka, Cardia Bioplastics Limited); former Senior Executive of Optus Communications. MTC Board Member since January 2016.

Virginia Lovett

MTC Executive Director and co-CEO; MTC Foundation Board Member since March 2015.

Liz Chappell

MTC Finance Director; MTC Foundation Board Member since March 2015.

Jayne Lovelock

MTC Development Director; MTC Foundation Board member since March 2017.

ARTISTIC DIRECTOR'S REPORT

BRETT SHEEHY AO



Artistically, 2017 has been one of our most satisfying years yet thanks in no small part to the generosity of our donors. Records and 'firsts' were achieved by the Company in several areas, not least

amongst them the record response to our work by audiences.

In 2017 we had over 20,000 subscribers join us – more than for any other theatre company in the country – and set a new box office record for the second year running.

These burgeoning box office results, while pleasing, indicate the growing need for even more dependence on commercial programming, as overall government support continues to shrink in real terms and costs continue to rise, sometimes astronomically. And for MTC the challenge exceeds that of other companies as we still have the lowest percentage of government support of any of Australia's 28 major performing arts organisations.

So the continued support of our loyal community of donors to MTC and the successes achieved in ticket sales and box office revenue, are not a luxury but a

necessity to continue to function as Victoria's primary live storyteller, whilst employing hundreds of Australians each year.

That said, in 2017 we still managed to provide an extraordinarily diverse program of work with your support, which both challenged and entertained tens of thousands of Melburnians as well as national and international audiences. The year featured 12 productions including four world premieres of new Australian works in Melbourne, and past MTC hit productions remounted for national and international tours.

Those tours included our production of *What Rhymes with Cars and Girls* touring Victoria, followed by seasons in Sydney and Brisbane. They also included three shows born at MTC being presented on the world's stages: *North by Northwest* opened to four and five star reviews in the UK before moving to Toronto in September; *Lilith: The Jungle Girl* had a season at the legendary Traverse Theatre in Edinburgh and garnered more four and five star reviews; and our first ever dance/theatre collaborative production from 2014, *Complexity of Belonging*, had the honour of being the closing season for the prestigious European Capital of Culture Festival in Denmark.

Back at home, through the generosity and national vision of Melbourne's philanthropic community, we launched the NEXT STAGE Writers' Program – the largest and most sophisticated playwright development scheme ever undertaken in Australia, as we aim to generate the next generation of iconic and canonical works for Australia's stage future.

In 2017 we continued the landmark Women in Theatre Program thanks to the generosity of the Women in Theatre Giving Circle, creating more and more pathways for women into the theatre industry. Our total alumni now is an army of 45 women out in the theatre world, working as artistic directors, playwrights, directors, producers, designers, dramaturgs, production and technical personnel, venue managers, and general managers, all over Australia.

We continued our Cybec Electric playreading series, supported by Roger Riordan AM and the Cybec Foundation, and championed the work of nine Asian-Australian playwrights, for Melbourne's inaugural Asia Triennial of Performing Arts (AsiaTOPA) festival curated by Arts Centre Melbourne.

And we continued our NEON NEXT workshops, developing artists and projects with Victoria's magnificent independent theatre sector.

In 2017 we blitzed Victoria's theatre awards, the Green Room Awards, with our productions of *Miss Julie* taking the top honours for Best Production, and our co-production *Lilith: The Jungle Girl*, taking the Best Ensemble Award.

MTC also picked up four other awards: Best New Writing, Best Director, Best Set and Costume and Best Digital Design.

Our production of *Jasper Jones* won two 2017 national Helpmann Awards, making us the only State theatre company in the country on the year's Helpmann stage, and our children's play commission *Egg* was awarded the nation's Best Play for Young People, at the Australian Writers' Guild Awards.

On our stages we saw sell-out performances of *Born Yesterday*, *Three Little Words*, *Minnie & Liraz*, *Macbeth*, *The Father* and *Vivid White*.

Macbeth was especially pleasing. While the show opened with good sales, audiences' praise was contagious, seeing more than 50 per cent of tickets purchased in-season by people new to MTC. A whole new MTC audience of thousands was made with just one production.

To have achieved all this, while also presenting challenging, technically complex and extremely rigorous works is something of which the Company, and you as our donors, should feel immensely proud.

While we do live with challenges, we conquer them through our team's ingenuity and indefatigable work ethic, through strategically balanced programming, and with the dedication of our unceasingly supportive donors. My heartfelt thanks and admiration goes to you, our greatest friends and supporters, for giving Melbourne, Victoria, Australia and other parts of the world yet another year of fine theatre.

Thank you

EXECUTIVE DIRECTOR'S REPORT

VIRGINIA LOVETT



Every year MTC strives to play a leadership role as one of Australia's major performing arts organisations. In 2017 we aimed higher, and with your generosity achieved a great many of our goals, and set the

Company on a course to grow in all areas of theatre and organisational practice over the coming years.

Our productions in 2017 continued to cement MTC's reputation as a world class theatre company, attracting accolades nationally, garnering awards and welcoming many first-time theatre goers.

In addition, the outstanding craftsmanship, technical expertise and professionalism throughout the organisation from scenic art to carpentry, electrics, wigs, millinery, costumes, production, stage management, front of house, ticketing, development and marketing and communications continued to be admired and studied. It is this work culture and commitment that gives MTC a tremendous competitive edge, allowing us to achieve all that we do.

In 2017 the Company produced 555 performances and employed 529 actors,

creatives and industry professionals. We performed to a paid attendance of over 215,000 resulting in a total box office of \$15.1 million.

Our donor community continued to grow with a 16% increase in the number of donors to MTC whilst the cost of fundraising remains under \$0.20 per dollar raised. We extend our heartfelt gratitude to every single donor who has contributed to Melbourne's home of theatre. Each year your donations play an increasingly vital role at MTC. Though with every show a prototype, success is counterbalanced by inherent risk and budgets that come under acute pressure. Box office, donations and other revenues are still heavily relied upon as government subsidy shrinks due to little or no indexation, while salaries, production and other costs increase at a rate of CPI or higher.

This year the Company will report a consolidated surplus of \$1.2 million with a small operating deficit of \$91,000.

With a company of MTC's size and a full-time staff of 94, part time staff of 21 and casual staff of 285 across the year, the challenge is to ensure we continue to have the proper resources to fulfil the artistic vision and strategic direction of the Company.

Over the years, we have worked strategically to grow our contributable income and be less reliant on earned income. In 2013 private donations represented 3% of total revenue and in 2017 it is 13%, compared to 8% of government funding. Another key goal of this strategy was establishing MTC's General Endowment Fund which reached \$3 million in 2017, continuing to fulfil our aim to grow our corpus for the company's future. Thank you to our visionary donors who have already contributed to the General Endowment Fund and our Legacy Circle supporters who have included a future legacy gift to MTC in their Will.

As the State theatre company there is an expectation for MTC to undertake many programs and collaborations outside our main season of productions. This is only possible with support from our donors and sponsors given our Federal and State governments' subsidies are wholly subsumed into the mainstage season.

MTC is a great ambassador for the State and each year we extend our reach to new corners of Victoria. In addition to our education and regional touring programs we are always looking for innovative ways to reach out beyond Southbank. One of the many ways we achieved this last year was through teaming up with Distance Education

Victoria and Creative Victoria for the Virtual Creative Professionals in Schools pilot program. Led by our Education Department, the project delivered an innovative online Year 8 Drama program integrating digital technologies with theatre and arts education.

In just a decade, MTC finds itself at the gateway of a global arts precinct in Southbank. Over the next five years this precinct will see the completion of a major redevelopment of Southbank Boulevard, the opening of the University of Melbourne's Conservatorium of Music and the new Stables as part of the new development of the VCA. Southbank will experience greater tourism and residential development.

MTC is well positioned to respond to this opportunity by working closely with our parent organisation, the University of Melbourne, and the State Government to fully leverage these new audiences and commercial opportunities.

It has been a fulfilling year, and as I reflect on the Company's accomplishments I am reminded of the essential role that our donors play in helping us achieve our vision and goals. On behalf of the entire staff of Melbourne Theatre Company thank you for your generosity and commitment to making MTC the best company it can be.

PHILANTHROPY NOTES

JAYNE LOVELOCK, DIRECTOR OF DEVELOPMENT



2017 was my first year at MTC as the Director of Development, I would like to take this opportunity to thank you, our generous donors, for your passion, advocacy and contribution to

Melbourne's home of live storytelling.

Your support ensures that MTC can continue as an iconic, creative and sustainable theatre company for generations to come – thank you. Your donations ensure that we are able to put on a full season of compelling theatre year after year, while opening opportunities for new audiences to experience the thrill of live theatre for the first time.

It also means that we are able to maintain and grow our commitments to education, to audience diversity and to professional development of future Australian talent. All of these activities contribute to an artistic climate of which the people of Victoria can be justly proud.

Over the last 12 months we have welcomed many new supporters to our MTC family of donors through generous donations. I would also like to thank those visionary

supporters who have notified us that they have chosen to remember MTC in their Will. It has been a great pleasure to meet so many of you who make up this vibrant and passionate community of art lovers at our theatres, MTC HQ tours and Donor events. 2017 also saw the introduction of our new MTC Major Gifts Manager, Sophie Boardley, who adds her passion and skill to our small team; Annual Giving Manager Chris Walters, Philanthropy Coordinator Sytske Hillenius and Event Manager Mandy Jones.

We would like to say a special thank you to a number of our major donors in 2017 including the late Betty Amsden AO DSJ, Peter Clemenger AO and Joan Clemenger AO, Crown Resorts Foundations, Cybec Foundation, The Hansen Little Foundation, the Lady Mayoress' Committee, the Lord Mayor's Charitable Foundation, Dr Geraldine Lazarus and Greig Gailey, the Packer Family Foundation and the Vizard Foundation, as well as to MTC's Playwright's Giving Circle; a group of visionary Donors who have made our landmark NEXT STAGE Writers' Program possible – setting a new benchmark for play development in Australia.

We also extend our sincere thanks to our contributors to our Giving Circles that directly support essential programs for our

community including Women in Theatre, MTC Ambassadors and MTC Education, and to our esteemed Artistic Director's Circle.

Every donor plays an important part at MTC and the trust and belief placed in the Company with every dollar donated is never taken for granted. It is your combined support that underpins the Company's success. Your generosity enables us to dream big and reach new heights of artistic vibrancy. You really are at the heart of everything we do.

With your continued support MTC faces a bright and exciting future. On behalf of the Development team thank you for your ongoing generosity, passion and patronage. Without you, none of this would be possible. Your contributions help transform lives through theatre.

Next time you take your seat for another night of world-class theatre please remember the important role you played in bringing these stories to life on the stage.

Thank you.

MTC LIFETIME PATRON

The MTC Lifetime Patron Award was established to recognise the extraordinary support of our most loyal patrons and acknowledges their significant contribution to the enrichment of theatre and the arts throughout Victoria and Australia. In 2017, Patricia Burke was awarded the honour of Lifetime Patron.

Pat has been subscribing to MTC since the company was founded as The Union Theatre Repertory Company (UTRC) in 1953. As a student at Melbourne University, she attended many performances of the MUDC (the student drama company). When the university formed UTRC under the Artistic Direction of John Sumner, Vice Chancellor Sir John Paton invited students and alumni to support the new venture and Pat was among the first to subscribe.

In the early 1990s when MTC started to struggle financially during its occupancy on Russell Street, Pat began her philanthropic journey to support the theatre family she had become a part of.

‘When Roger Hodgman was Artistic Director, as I remember it, there wasn’t a lot of money around. I’d suggest to Roger that we revive plays we’d performed earlier, and he’d say, “Yes Pat, I’d love to do that, but we haven’t

got the money for that cast.” That’s when I started to donate to the Company and become a patron of the arts in Melbourne.’

‘I regard the MTC as my second family. The opportunity for meeting actors directors, writers and backstage crew adds another dimension to watching a play. My admiration for their efforts never diminishes. It is a privilege to be a part of it all.’

Pat has continued her backing of MTC since, championing the need for new Australian work and improving theatre accessibility for less advantaged young people.

‘I’m interested in helping disadvantaged children. Whether they’re disadvantaged by distance because they live in the country, or disadvantaged otherwise. I think it’s important that young people get to experience the theatre early.’

Pat says she was shocked, delighted and entirely flattered to be receiving MTC’s 2017 Lifetime Patron Award. When asked why she is passionate about supporting the arts, she says, ‘people in the arts can’t just ask government for more money. So if we want the arts to continue it’s up to us.’



Pat Burke Lifetime Patron Award



*Terry Moran, Pat Burke, Virginia Lovett,
Brett Sheehy and Jane Hansen*

MTC 2018 DONOR AND THANK

It is always a thrill to share our new Season with our Donors



Jan Nolan, Julie and Katie Burke and Ewan Coates



Linda Herd and Rebecca Silk



Stephen and Julie Mystkowski, John Millard, Roger and Jan Goldsmith

SEASON PREVIEW YOU EVENT

- and our 2018 Donor Preview was no exception.



Ursula Whiteside, Joan Lefroy, Margaret Sahhar AM, Edwina Sahhar and Margaret Crothers



Ros and John Dowling



Chris Walters, Heather and Robert Glindemann

Pinky Watson, Liz Walsh, Warwick Eddington and Tony Hillery



Andrew Sisson Ao and Tracey Sisson



Martina Murray, Ann Darby and Vanessa Rowsthorn



Jayne Lovelock, Neal Harvey and Stephen Pell



Fiona Kirwan-Hamilton and Brett Parkin

DONOR EVENTS AT MTC



(Above) Ewan Coates, Katie and Pat Burke, Jo Davey and Jan Nolan



(Left) Juliette and Angeline Beninati and Virginia Gay



(Left) NEXT STAGE Writer's Program launch event

(Top left) Jill Buchanan, Alison Whyte and Ian Buchanan

(Top right) Tamara Brezzi and Hilary Scott



Anne Robertson, Terry Bracks AM and Dr Jane Bird



Doreen Stockdale, Dr Jane Bird, Rhyl Dorrington and Terry Bracks AM

Jayne Lovelock, Dr Andrew McAliece, Nick Doherty and Dr Richard Simmie



Tony Hillery, Valma Angeliss AM, Shareena Clanton and Valerie Lloyd-Smith



Guests at Women in Theatre Cocktail Party

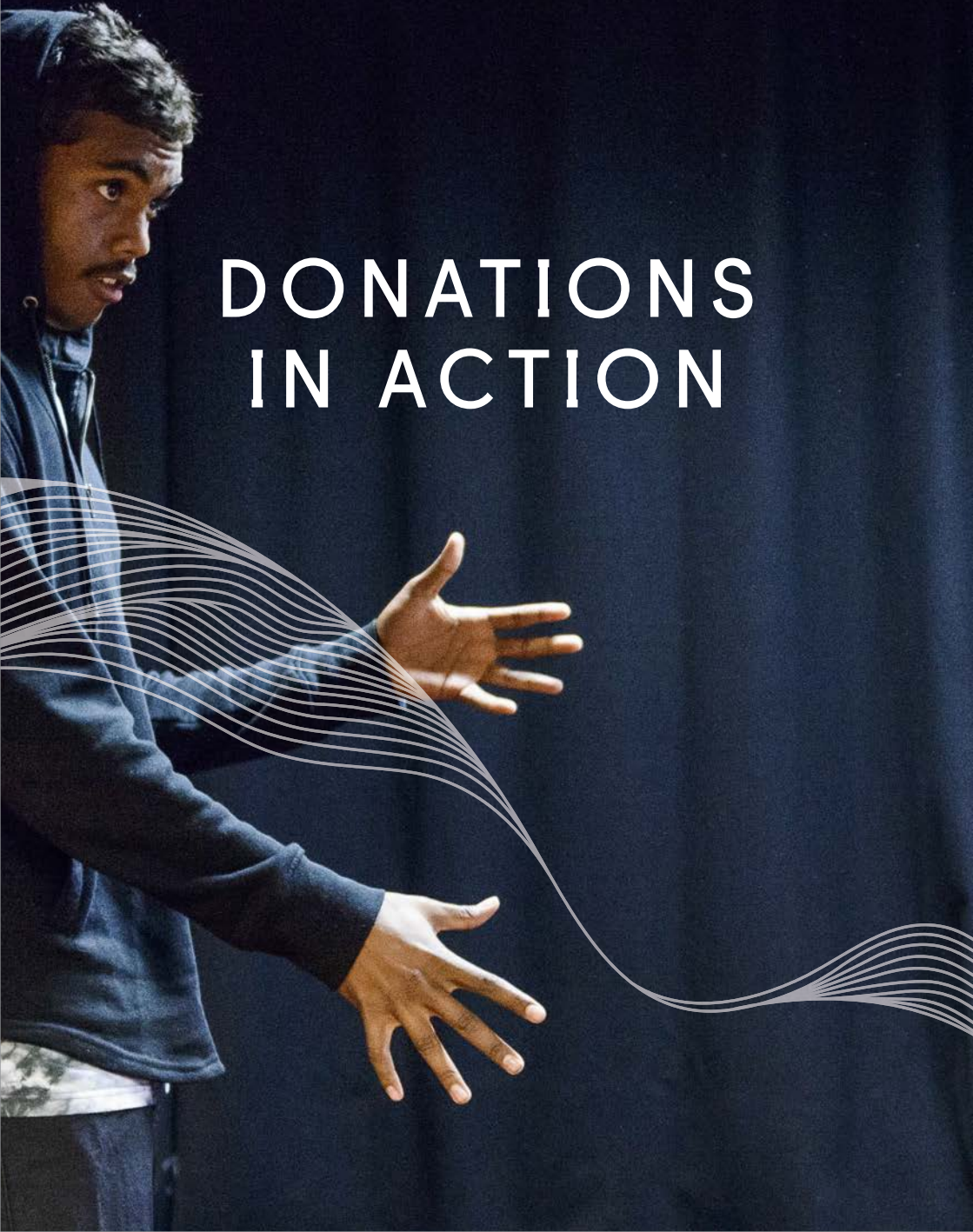


Guests at the Three Little Words Donor Dinner



Kamil Ellis, Laurel Das and Khisraw Jones-Shukoor

DONATIONS IN ACTION





SHARING THE LIGHT

MTC is passionate about making theatre accessible to all, and through the *Sharing the Light* program generously supported by the Packer Family Foundation and Crown Resorts Foundation we are able to put the transformative power of live performance within reach of more young people and families in Victoria. The program has four key components, all designed to help more people engage with the creative industries.



(This page and previous spread) Indigenous Scholarship participants; (opposite) regional tour



\$5 STUDENT TICKETS AND FAMILY TICKETS

Subsidised \$5 tickets are offered to students at disadvantaged schools to attend MTC Mainstage, and Education productions, and to families in outer-metro Melbourne for nominated MTC productions. In 2017 students from 80 schools from metropolitan and regional Victoria took up the offer that enabled many of these students to attend an MTC show for the first time.

Total \$5 tickets provided: 3,646

TRAVEL SUBSIDY

To reduce geographical and financial barriers in getting to the theatre, a travel subsidy is offered to schools in regional areas of Victoria. In 2017, this subsidy helped 1,309 students get to the theatre.

Total travel subsidy provided to schools: \$24,839

INDIGENOUS SCHOLARSHIP PROGRAM

Through *Sharing the Light*, MTC, in partnership with the Wilin Centre for Indigenous Arts and Cultural Development, offers a one-of-a-kind learning opportunity to young Aboriginal and Torres Strait Islander people interested in the performing arts, to explore all the varied roles and career pathways available in the industry. ▶

The program features a series of workshops on performance skills, writing for the stage, technical and design production, arts marketing, and culminates in a group-devised performance staged at the Southbank Theatre. In 2017 there were eight participants hailing from regional Victoria, metro Melbourne as well as Western Australia.

Participants

Khan James-Parker, Shaniqua Lee, Ian Layland, Joshua Marshall, Kieran Mounsey, Amelia O'Leary and Brodi Purtill

Program Artists and Mentors

Sermisah (Suri) Bin Saad and Lenka Vanderboom

REGIONAL TOUR

The full-scale production of *Melbourne Talam* travelled over 2,000km to reach regional performing arts centres and included 10 performances in total to almost 1,000 students. In addition to the performance, MTC offered free pre-show talks for students (normally only available at cost in Melbourne) and Q&A sessions with cast and creatives after the show facilitated by MTC Community Outreach Manager Karin Farrell.

MTC sincerely thanks the Packer Family Foundation and Crown Resorts Foundation for their commitment to ensuring theatre is accessible to all young people throughout Victoria.



Indigenous Scholarship participants meet the Macbeth cast



Indigenous Scholarship participant Ian Layland

REGIONAL ENRICHMENT

MTC's Regional Enrichment Program, supported by the Gailey Lazarus Foundation, provides an opportunity for students in regional Victoria to deeply engage with MTC's Education Production *Melbourne Talam*, MTC's production of *Macbeth*, or participate in a VCE Theatre Studies or Drama workshop. In 2017, 166 students ranging from Year 8 to Year 12 participated in 10 workshops throughout the state.

Melbourne Talam Workshops

St Mary of the Angels Secondary College,
Nathalia

Victory Lutheran College, Wodonga

Trinity Anglican College, Albury

Melton Secondary College

Trinity College, Colac

Teaching Artists Lenka Vanderboom and
Nick Tranter

Macbeth Workshops

Murrayville Community College

Edenhope College

Teaching Artists Darcy Brown and
Nick Tranter

VCE Workshops

Wanganui Secondary College

Bendigo Senior Secondary College

Mildura Senior College

Teaching Artists Emily Taylor and
Meg Upton



Trinity Anglican College workshop



Teaching artist Lenka Vanderboom (back row, right) with teacher and students from Trinity College Colac



2017 MTC Ambassadors



MTC AMBASSADORS

'Being able to learn from individuals at the forefront of their craft has been an incredible experience. Whether they're backstage or in the spotlight, each has offered invaluable insight.'

James, 2017 MTC Ambassador

Every year, fifteen Year 11 theatre-lovers are selected as MTC Ambassadors, joining the Company for an unforgettable year of theatre experiences. Last year's Ambassadors met a wide variety of industry professionals and share MTC productions together throughout the year.

Upon completion of the program they are welcomed into our Young Grads initiative enabling them to continue their role as advocates for MTC in their communities and stay connected with their peers.

Recent alumni of the program have gone on to work with independent theatre companies and festivals, as well as being accepted into tertiary performing arts programs.

We thank our Youth Ambassador Circle Donors in 2017 for investing in the next generation of theatre-makers: Melody and Jonathan Feder; Heather Forbes-McKeon; Bruce Freeman; Linda Herd; Jock and Jenny Jeffries; Larry Kornhauser and Natalya Gill; Ging Muir and John McCawley; Tom and Ruth O'Dea; Roslyn and Richard Rogers Family; Aaron and Lorraine Shwartz; Kevin and Elizabeth Walsh; Jan Williams



Betty Amsden Youth Scholarship Course 2017 participants

BETTY AMSDEN YOUTH SCHOLARSHIP COURSE

'I can already see the positive impact it has had on my son. My son has been struggling with school and life in general, but he absolutely loves drama and theatre. This week his smile returned.

Parent of 2017 participant

In memory of the late Betty Amsden AO DSJ and in acknowledgement of her generous support for the program, MTC proudly renamed the 2017 Youth Scholarship Course to honour Betty.

This free, week-long intensive drama course is aimed at students who would not otherwise have access to extra-curricular drama programs due to economic, educational, geographic or personal barriers.

In October 2017, twenty-five students, aged between 14 and 16, travelled to MTC from regional towns across Victoria including Mildura, Yarram, Berriwillock, Shepparton, Wodonga, Sebastopol and Warrnambool, as well as outer-metro and Melbourne city suburbs.

Students were guided through performance-making activities, extending their expressive skills and learning how to contribute as a member of an ensemble. In the same rehearsal studios where the nation's leading theatre practitioner's work, these young artists developed new skills and formed lasting friendships.

MTC gratefully acknowledges the generous support of the late Betty Amsden AO DSJ, the Lord Mayor's Charitable Foundation and the Lady Mayoress' Committee



WOMEN IN THEATRE

The Women in Theatre program offered much more than just a mentor. Had it not been for the Fearless Leadership session, I would not have applied for the job that I now successfully hold. The Program gave me confidence in my ability and experience, and empowered me to take a few leaps of faith that I would not have been brave enough to take previously.

Victoria Woolley, 2017 Production Management Participant

The 2017 MTC Women in Theatre Program offered 13 emerging and mid-career women in theatre, across a range of different disciplines, the chance to familiarise themselves with the culture and inner

workings of a major state theatre company, gain insight into its audiences, venues and ongoing core business and ultimately develop their collaboration, leadership and artistic skills in order to further their practice.



Clare McKenzie, Dans Marie Sheehan, Martina Murray, Victoria Woolley, Fiona Bruce, Angelica Clunes, Mary Rachel Brown, Jenni Medway, and

Over a 12 month period participants received one-on-one mentoring from a leading practitioner in their chosen field. In addition, the program provided leadership training, practical career advice

and professional coaching across a wide range of business and commercial aspects of the theatre industry, while also offering open access to all facets of Melbourne Theatre Company.

MTC thanks our Women in Theatre Giving Circle Donors: Tamara Brezzi; Kate Galvin; Christine Gilbertson; Charles and Cornelia Goode Foundation; Fiona Griffiths and Tony Osmond; Jane Hodder; Katherine Kavakos; Janette Kendall; Liana Kestelman; Selina Lightfoot; Helen Mantzis; Dr Sam and Belinda Margis and NEST Family Clinics; Kim and Peter Monk; Jacquie Naylor; Leigh O'Neill; Prof Hannah Piterman; Anne and Mark Robertson OAM; Kaylene Savas; Annette and Graham Smorgon; Jenny Spooner; Kerry Stephenson; Debra and Richard Tegoni; The Robert Salzer Foundation; Marion Webster; Anonymous



and Annie Bourke



Students enjoying a tour of Wardrobe at MTC Headquarters

MTC EDUCATION GIVING CIRCLE

‘One student, who can be quite disengaged at school said “That was the most amazing thing I have ever seen. I can’t believe this is a thing in the world that I never knew about.” The visit to see Macbeth was so terrific, and will definitely be a lasting memory for our students.’

Kim Hutchison, Glenroy College

The Education Giving Circle was established in 2017 to bring together likeminded donors who are passionate about providing young Victorians with access to rich and rewarding theatre experiences

Theatre entertains, challenges, and provokes possibility. From early on in our lives, role-playing becomes a fundamental way of developing life skills including empathy, resilience, and teamwork – skills that are vital in a rapidly changing world.

Thanks to our donors, in 2017 MTC Education:

- Produced an annual education production, *Melbourne Talam* by Rasma N. Kalsie, which was awarded the Best Performance for VCE Drama by the Victorian Association of Drama Education
- Enhanced the experience and demystified the process of making

theatre through Education Packs, Pre-Show talks, Post-Show Q&A sessions, and behind-the-scenes videos.

- Provided unique and exclusive insights into MTC’s world-class professional theatre practice through secondary school work experience program and HQ Tours.
- Developed the talent and skills of aspiring young theatre-makers through VCE Drama and Theatre Studies workshops.
- Continued to make our mainstage theatre season accessible to young Victorians and their teachers through affordable \$27 school tickets

Donations to the Education Giving Circle directly support the development of the next generation of Australian theatre-makers.

MTC thanks the Education Giving Circle Donors who share our belief in the power of theatre to transform young lives: Tom and Elana Cordiner; The Cuming Bequest; Linda Herd; Hutchinson Builders; Dorothy Kowalski; Virginia Lovett and Rose Hiscock; Daniel and Katherine Rechtman; Linda Rubinstein and Paul Slape; Hilary and Stuart Scott; Debra and Richard Tegoni; Susie Waite; Paula Walker; Anonymous (5)

LITERARY DEVELOPMENT

CYBEC ELECTRIC

Established to create opportunities for emerging playwrights to increase their skills and experience, Cybec Electric plays an integral role in MTC's development activities. The 2017 series presented works by eight playwrights through public, professionally directed readings, following intensive development workshops with MTC Literary Director, Chris Mead, and fellow MTC Creatives. MTC was proud to partner with Asia TOPA to feature works by Asian and Australian-Asian playwrights and practitioners.

MTC thanks Roger Riorden and The Cybec Foundation Board for their generous dedication to Cybec Electric.



VIZARD LITERARY DEVELOPMENT PROGRAM

Throughout 2017, the Vizard Literary Development Program enabled nine development workshops and two research projects, bringing together some of Australia's most acclaimed practitioners to explore new works by both emerging and established playwrights.

We acknowledge the Vizard Foundation for their generous, continued support of this important program that ensures valuable opportunities for Australian playwrights and, in turn, the future of challenging, inspirational and relevant Australian Theatre.



CLEMENGER COMMISSIONS

For over ten years Clemenger Commissions have allowed MTC to commission and produce new, contemporary and powerful Australian plays, plays that have formed the bulk of MTC's new play repertoire and many Mainstage offerings. The Joan and Peter Clemenger Trust has enabled MTC to engage playwrights who are fresh and provocative; playwrights who are adored by Melbourne audiences; and playwrights who continue to break new ground while bringing an audience along with them.

We thank Joan Clemenger AO and Peter Clemenger AO for their extraordinary generosity and vision.





*Joanna Murray-Smith, Benjamin Law, Patricia Cornelius,
Ellen van Neerven and Angus Cerini*

NEXT STAGE

In June 2017 Melbourne Theatre Company launched the NEXT STAGE Writers' Program, a \$4.6 million investment in Australian writers co-funded by the donors of MTC's Playwrights Giving Circle and Melbourne Theatre Company.

The five-year program introduced the most rigorous playwright commissioning and development process ever undertaken by MTC, setting a new benchmark for play development in Australia that will enhance the fabric, and legacy, of Australian live storytelling.

NEXT STAGE will provide a total of 50 opportunities for Australian writers, consisting of residencies and commissions across the five years of the program.

In the first year of the program there were seven commissioned writers and three writers-in-residence.

With the generous support of NEXT STAGE donors, MTC is not only able to increase its annual number of commissions, and devote further financial resources to writers and their plays, MTC is also able to form more dedicated, meaningful connections with established and emerging writers, which will result in stronger, stage-ready plays that will enhance the fabric of Australian live storytelling.

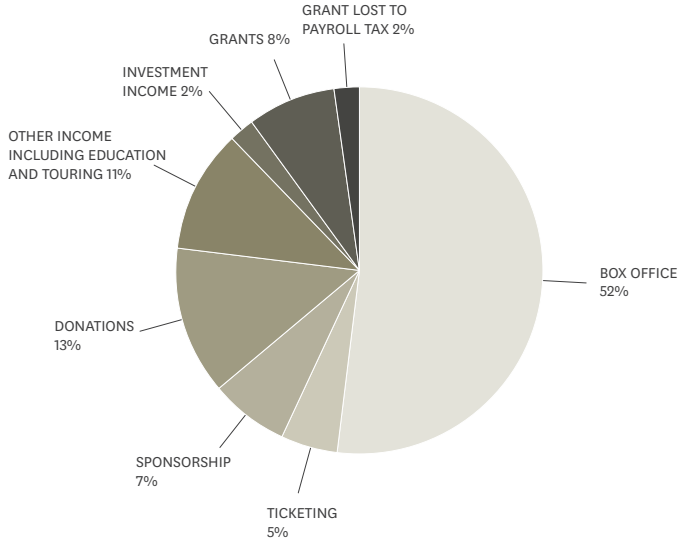
MTC sincerely thanks the Playwrights Giving Circle for their leadership and visionary commitment to Australian stories and Australian writers.

Louise Myer and Martyn Myer AO, Maureen Wheeler AO and Tony Wheeler AO, Christine Brown Bequest Naomi Milgrom AO, Allan Myers AO QC and Maria Myers AC, Tony Burgess and Janine Burgess Dr Andrew McAleice and Dr Richard Simmie, Larry Kamener and Petra Kamener

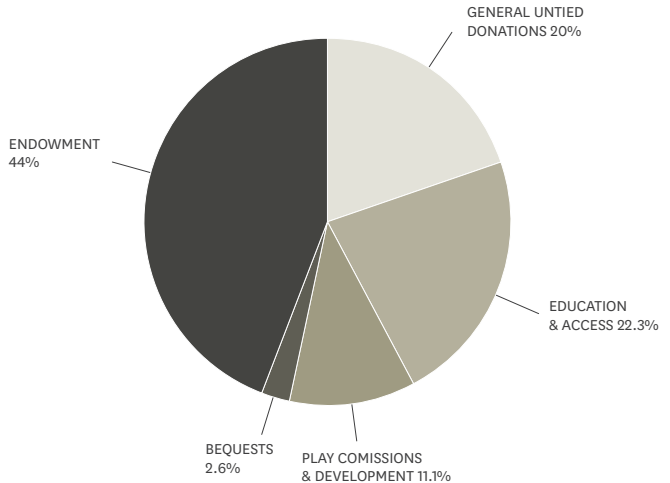


2017 FINANCIAL REPORT

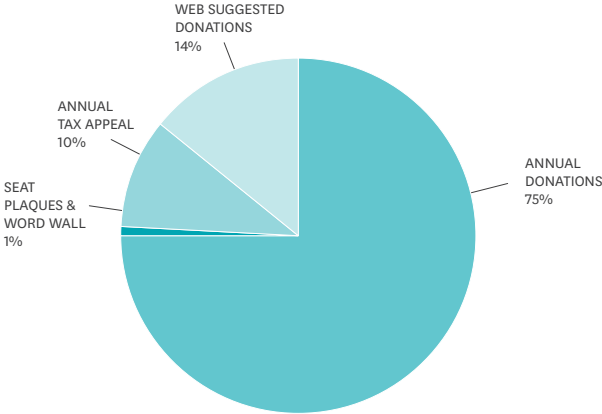
MTC'S 2017 INCOME TOTALLING \$29M



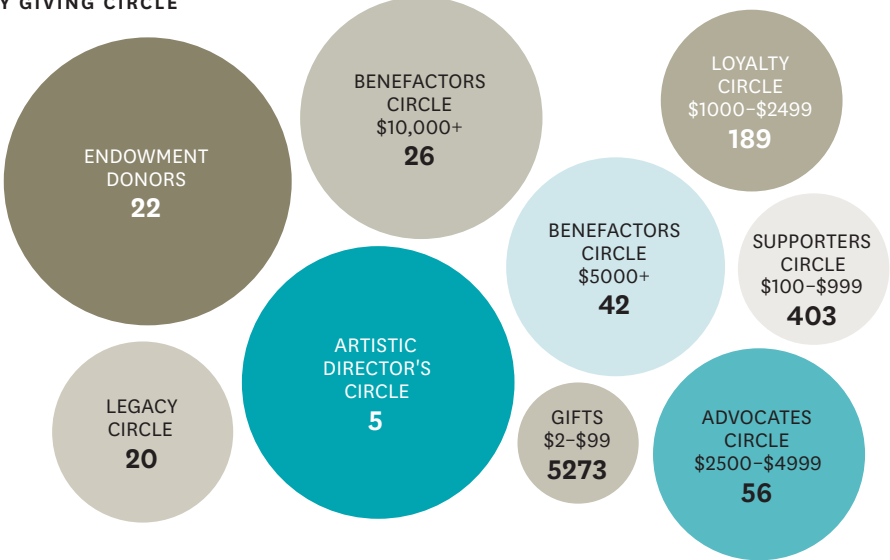
TOTAL DONATIONS AND BEQUESTS (EQUALLING 13% OF MTC'S INCOME)



BREAKDOWN OF UNTIED DONATIONS



NUMBER OF DONORS BY GIVING CIRCLE



MTC CIRCLES OF GIVING

MTC gratefully acknowledges our visionary donors

MTC LIFETIME PATRONS

Acknowledging a lifetime of extraordinary support for MTC.

Pat Burke	Allan Myers AC QC and	Dr Roger Riordan AM
Peter Clemenger AO	Maria Myers AC	Caroline Young
and Joan Clemenger AO	The Late Biddy Ponsford	and Derek Young AM

ENDOWMENT DONORS

Supporting the long term sustainability and creative future of MTC.

Leading Endowment

Donors
\$1,000,000+
Jane Hansen
and Paul Little AO

\$20,000+
Tony and Janine Burgess
Geoffrey Cohen AM
Orcadia Foundation
Andrew and Tracey Sisson

\$10,000+
Mim and Michael Bartlett
Prof Margaret Gardner AO
and Prof Glyn Davis AC
Carolyn and John Kirby AM
Anne and
Mark Robertson OAM

Recent Endowment Donors

Philip Crutchfield QC and Amy Crutchfield	Emeritus Prof Peter McPhee
Fred and Alex Grimwade	Dr Monica Pahuja
Rosie Harkness	Lady Potter AC
David and Lily Harris	Renzella Family
Terry Moran AC	Steven Skala AO and Lousje Skala
Robert Peck AM and Yvonne von Hartel AM	Anonymous
Prof David Penington AC and Dr Sonay Hussein	

MTC'S PLAYWRIGHTS GIVING CIRCLE

Supporting the NEXT STAGE Writers' Program.

Louise Myer and Martyn Myer AO, Maureen Wheeler AO and Tony Wheeler AO, Christine Brown Bequest Naomi Milgrom AO, Allan Myers AC QC and Maria Myers AC, Tony Burgess and Janine Burgess Dr Andrew McAliece and Dr Richard Simmie, Larry Kamener and Petra Kamener



ANNUAL GIVING

Donors whose annual gifts help MTC enrich and transform lives through the finest theatre imaginable.

Benefactors Circle

\$250,000+
Crown Resorts Foundation
Packer Family Foundation

\$50,000+
The Joan and Peter
Clemenger Trust
The Cybec Foundation
Maureen Wheeler AO
and Tony Wheeler AO

\$20,000+
The Late Betty Amsden
AO DSJ

Dr Geraldine Lazarus
and Greig Gailey
Hutchinson Builders ●
Louise and Martyn Myer AO
Caroline and Derek
Young AM ▲
The Vizard Foundation

\$10,000+
Erica Bagshaw
Joanna Baevski ▲
Mary Barlow
The Cattermole Family
Christine Gilbertson ◆

Linda Herd ■●
Macgeorge Bequest
The late Noel Mason
and Susanna Mason ▲
The Lord Mayor's Charitable
Foundation
Bruce Parncutt AO
Craig Semple ▲
Luisa Valmorbida ▲
Anonymous (2)

\$5,000+
John and Lorraine Bates

Sandy Bell and
Daryl Kendrick
Dr Andrew Buchanan
and Peter Darcy
Ian and Jillian Buchanan
John and Robyn Butselaar
The Janet and Michael
Buxton Foundation
Barry and Joanne
Cheetham
Tom and Elana Cordiner ●
Joel Dodge and Family ●
The Dowd Foundation

Melody and Jonathan Feder ■ ●
 Gjergja Family
 Robert and Jan Green
 David and Lily Harris
 Jane Hemstritch
 George Klemphfner and Yolanda Klemphfner AO
 Dr Caroline Liow
 Anne Le Huray
 Marshall Day Acoustics (Dennis Irving Scholarship)
 Ian and Judi Marshman
 Matsarol Foundation
 Ian and Margaret McKellar
 George and Rosa Morstyn
 Daniel Neal and Peter Chalk
 Tom and Ruth O'Dea ■
 Leigh O'Neill ◆
 Dr Pajouhesh (Smile Solutions)
 In loving memory of Richard Park
 Prof David Penington AC and Dr Sonay Hussein
 Jeanne Pratt AC
 Janet Reid OAM and Allan Reid
 Christopher Richardson
 The Robert Salzer Foundation ◆
 Trawalla Foundation Trust
 Anonymous (7)

Advocates Circle
\$2,500–\$4,999

Marc Besen AC and Eva Besen AO
 Jay Bethell and Peter Smart
 Grant Fisher and Helen Bird
 Bill Bowness AO
 Sandra and Bill Burdett AM
 Lynne and Rob Burgess
 Pat Burke and Jan Nolan
 Diana Burleigh
 Jenny and Stephen Charles AO
 The Cuming Bequest
 Debbie Dadon AM
 Ann Darby
 Dr Anthony Dortimer and Jillian Dortimer

Shaun and Michelle Factor ●
 Dr Helen Ferguson
 Rosemary Forbes and Ian Hocking
 Bruce Freeman ■
 Heather and Bob Glindemann OAM
 Henry Gold
 Leon Goldman
 Roger and Jan Goldsmith
 Murray Gordon and Lisa Norton
 Lesley Griffin
 Fiona Griffiths and Tony Osmond ◆
 Tony Hillery and Warwick Eddington
 Bruce and Mary Humphries
 Peter and Halina Jacobsen
 Janette Kendall ◆
 Alex and Halina Lewenberg
 Virginia Lovett and Rose Hiscock ●
 Carol Mackay and Greg Branson
 Dr Sam and Belinda Margis and NEST Family Clinics ◆
 Dr Sue McNicol QC
 Peter and Kim Monk ◆
 Sandy and Sandra Murdoch
 Jane and Andrew Murray
 Dr Paul Nisselle AM and Sue Nisselle
 Peter Philpott and Robert Ratcliffe
 Anne and Mark Robertson OAM ◆
 Max Schultz
 Hilary and Stuart Scott ●
 Tim and Lynne Sherwood
 Richard and Debra Tegoni ◆ ●
 Trikojus Education Fund – Australian Communities Foundation ●
 Cheryl and Paul Veith
 Ralph Ward-Ambler AM and Barbara Ward-Ambler
 Price and Christine Williams
 Margaret and Ray Wilson OAM
 Gillian and Tony Wood

Laurel Young-Das and Heather Finnegan
 Anonymous (6)
Loyalty Circle
\$1,000–\$2,499
 Dr Katie Allen and Malcolm Allen
 Noel and Sylvia Alps AM
 Jennifer Andrews
 In memory of Nicola Andrews
 Valma E. Angliss AM
 James and Helen Angus
 Kate Aplin
 Margaret Astbury
 John and Dagnija Balmford
 Angelina Beninati
 David and Rhonda Black
 Marc and Orli Blecher and Family ●
 Steve and Terry Bracks AM
 Jenny and Lucinda Brash
 Tamara Brezzi ◆
 Beth Brown and Tom Bruce AM
 Pam Caldwell
 Alison and John Cameron
 John and Jan Campbell
 Jessica Canning
 Clare and Richard Carlson
 Fiona Caro
 Kathleen Cator
 Chef's Hat
 Chernov Family
 Sue Clarke and Lindsay Allen
 Assoc Prof Lyn Clearihan and Dr Anthony Palmer
 Dr Robin Collier and Neil Collier
 Sandy and Yvonne Constantine
 Dr Cyril Curtain
 Mark and Jo Davey
 Jocelyn Davies
 Mark and Amanda Derham
 Katharine Derham-Moore
 Jan Dircks
 Robert Drake
 Bev and Geoff Edwards
 George and Eva Ermer
 Anne and Graham Evans AO
 Marian Evans
 Dr Alastair Fearn
 Jan and Rob Flew

Heather Forbes-McKeon ■
 Elizabeth Foster
 The Gordon Frost Organisation
 John Fullerton
 Kate Galvin ◆
 Nigel and Cathy Garrard
 Diana and Murray Gerstman
 Gill Family Foundation
 Brian Goddard
 Charles and Cornelia Goode Foundation ◆
 Sarah Graff
 Isabella Green OAM and Richard Green
 John and Jo Grigg
 Jane Grover ◆
 Ian and Wendy Haines
 Glen Harrington and Robyn Eastham
 Jane Hodder ◆
 Sandi and Gil Hoskins
 Emeritus Prof Andrea Hull AO
 Sarah Hunter ◆
 Ann and Tony Hyams AM
 Peter Jaffe
 Ed and Margaret Johnson
 Prof Shitij Kapur and Dr Sharmistha Law
 Katherine Kavakos ◆
 Irene Kearsey and Michael Ridley
 Malcolm Kemp
 Liana Kestelman ◆
 Fiona Kirwan-Hamilton and Simon E Marks sc
 Doris and Steve Klein
 Larry Kornhauser and Natalya Gill ■
 Alan and Wendy Kozica
 Ruth and Michael Kurc ■
 Elizabeth Laverty
 Joan and George Lefroy
 Rosemary Leffler
 Leg Up Foundation
 Alison Leslie
 Peter and Judy Loney
 Neil and Vida Lowry
 Dr Peter and Amanda Lugg
 Elizabeth Lyons
 Ken and Jan Mackinnon
 Alister and Margaret Maitland
 Helen Mantzis ◆
 Joyce and Bernard Marks

- | | | | |
|---|--|---|---|
| John and Margaret Mason
Garry McLean
Elizabeth McMeekin
Brenda and Don McRae
Robert and Helena
Mestrovic
John G Millard
Ross and Judy Milne-Pott
Ging Muir and
John McCawley ■
Barbara and David Mushin
Nelson Bros Funeral
Services
Julie Nelson
Nick Nichola
and Ingrid Moyle ●
James Ostrobrurski
Dr Harry and Rita
Perelberg
Dr Annamarie Perlesz
Prof Hannah Piterman ◆
Dug and Lisa Pomeroy
Sally Redlich
Victoria Redwood | Anthony Renzella
Jessica Renzella
Robert Renzella
Sarah Renzella
Dr S M Richards AM
and M R Richards
Roslyn and
Richard Rogers Family ■
Sue Rose
Rae Rothfield
Linda Robinstein
and Paul Slape ●
Patrick Rundle and
Damien Mulvihill ■
Anne and Laurie Ryan
F and J Ryan Foundation
Edwina Sahhar
Margaret Sahhar
Katherine Sampson
and Michael Jaboor
Susan Santoro
Kaylene Savas ◆
Graeme Seabrook | Marshall Segan and
Ylana Perlov
Claire Sheed
Prof Barry Sheehan
and Pamela Waller
Steven Nicholls and
Brett Sheehy AO
Diane Silk
Dr John Sime
Jane Simon and Peter Cox
Reg and Elaine Smith OAM
– Earimil Gardens Charity
Tim and Angela Smith
Annette and
Graham Smorgon ◆
Diana and Brian Snape AM
Geoff and Judy Steinicke
Ricci Swart
Rodney and Aviva Taft
Sylvia Taylor
Suzanne Thompson
Frank Tisher OAM and
Dr Miriam Tisher
Susie Waite ● | Kevin and
Elizabeth Walsh ■
Anthony Watson and
Tracy McDonald
Pinky Watson
Marion Webster ◆
Penelope and
Joshua White
Ursula Whiteside
Ann and Alan Wilkinson
Jan Williams ■
John and Myriam Wylie
Foundation ◆
Mandy and
Edward Yencken
Graeme and
Nancy Yeomans
Greg Young
Roz Zalewski and
Jeremy Ruskin
Ange and Pete Zangmeister
Anita Zeimer ◆
Anonymous (30) |
|---|--|---|---|

Acknowledging Donors who join together to support innovative and inspiring programs for the benefit of our community.

▲ ARTISTIC DIRECTOR'S
CIRCLE

■ YOUTH AMBASSADORS
GIVING CIRCLE

◆ WOMEN IN THEATRE
GIVING CIRCLE

● EDUCATION
GIVING CIRCLE



PACKER FAMILY
FOUNDATION

HANSEN LITTLE
FOUNDATION

THE
Cybec
FOUNDATION



LEGACY CIRCLE

Acknowledging supporters who have made the visionary gesture of including a gift to MTC in their will.

- | | | | |
|--|--|---|------------------------------|
| Mark and Tamara Boldiston
Bernadette Broberg
Adam and Donna
Cusack-Muller | Peter and Betty Game
Fiona Griffiths
Irene Kearsey | Dr Andrew McAliece
and Dr Richard Simmie
Peter Philpott and
Robert Ratcliffe | Max Schultz
Anonymous (6) |
|--|--|---|------------------------------|

LEGACY GIFTS

Remembering and honouring those who have generously supported MTC through a bequest.

- | | | | |
|---|---|---|---|
| The Estate of
Leta-Rae Arthy
The Christine Brown
Bequest
The Estate of
Ron Chapman | The Estate of
Gordan J Compton
The Estate of Betty Ilic
The Estate of
Bettie Kornhauser | The Kitty and Leslie
Sandy Bequest
The Estate of
James Hollis Minson
The Estate of
Prudence Ann Tutton | The Estate of
Freda E White
The Estate of
Dorothy Wood |
|---|---|---|---|



*Indigenous Scholarship
Program participants in
MTC's Wardrobe
Department*