



DONOR  
IMPACT REPORT  
2018

# CONTENTS

## MTC HQ

252 Sturt St  
Southbank VIC 3006  
03 8688 0900

## Southbank Theatre

140 Southbank Blvd  
Southbank VIC 3006  
03 8688 0800

[mtc.com.au](http://mtc.com.au)

## Venues

Throughout 2018, MTC performed its Melbourne season of plays at Southbank Theatre, The Sumner and The Lawler, and the Fairfax Studio and Playhouse at Arts Centre Melbourne.

**Managing Editor** Virginia Lovett

**Editor** Rosie Shepherdson-Cullen

**Graphic Designer** Helena Turinski

**Cover photo** Jeff Busby

Production photography by Brinkhoff/Mögenburg (*The Curious Incident of the Dog in the Night-Time*), and Jeff Busby (all remaining productions). Other photography by TJ Garvie, Tim Grey, Benjamin Healley, Mandy Jones, Nick Tranter, Sarah Walker and Heath Warwick.

Melbourne Theatre Company acknowledges the Yalukit Willam Peoples of the Boon Wurrung, the First Peoples of Country on which Southbank Theatre and MTC HQ stand, and we pay our respects to all of Melbourne's First Peoples, to their ancestors and Elders, and to our shared future.

4	2018 in Numbers
6	Foundation Chair's Report
8	Artistic Director's Report
10	Executive Director's Report
12	MTC Season 2019 Donor Preview and Thank You Event
14	MTC Lifetime Patrons
15	Donor Events at MTC
18	Donations in Action
20	Sharing the Light
24	Regional Enrichment
26	Ambassadors
28	Youth Scholarship Course
30	Women in Theatre
32	Education Giving Circle
34	Literary Development
36	NEXT STAGE
38	2018 Financial Report
40	Foundation Board
42	MTC's Circles of Giving

MTC is a department of the University of Melbourne.



MTC is assisted by the Commonwealth Government through the Australia Council, its arts funding and advisory body, and by the State Government of Victoria through Creative Victoria.



MTC is a member of Live Performance Australia and the Australian Major Performing Arts Group.



# 2018 IN NUMBERS



**564**

total performances



**4**

Australian plays on MTC stages



**7%**

of total revenue came from private donations



**12**

theatre professionals participated in MTC's Women in Theatre Program



**6,439**

school tickets to MTC productions



**3,000km+**

travelled on the *Hungry Ghosts* Regional Tour

**250,114**

attendance to MTC shows

**8**

new Australian plays developed through Cybec Electric

**2,797**

new Donors to MTC in 2018

**17**

backstage secondments for industry professionals

**2,714**

\$5 tickets for disadvantaged students and families in outer-metro Melbourne

**75**

teachers participated in MTC professional development workshops

**574**

Actors, creatives and industry professionals employed

**20**

writers commissioned or in residence as part of MTC's NEXT STAGE program

**9%**

increase in donations to MTC's end of financial year appeal

**541**

students attended pre-show talks and post-show Q & As

# FOUNDATION CHAIR'S REPORT

## JANE HANSEN



The choice to donate, no matter how big or small the amount, begins with a passion and a desire to contribute to a greater good. At Melbourne Theatre Company, we are extremely fortunate

to have a community of donors who share in the value of theatre and in MTC itself; and who in turn provide essential support to the Company.

This donor impact report serves as an acknowledgement of what has been achieved thanks to the commitment and support of our dedicated donors. Through your generosity and vision, you have once again helped create moments that shaped, and will continue to shape, the future of Australian theatre. I thank you for the trust you have shown in what we do every year and for sharing our love of the art form of live theatre.

Financially, the Foundation, the Development Department and Executive team continue to ensure costs remain low and donations are efficiently directed to where they are needed – ensuring MTC produces the best possible theatre for our audiences now and in the future.

In 2018, the Foundation oversaw the growth of the General Endowment Fund by 4% to \$3.2 million, with \$102,232 in investment earnings retained in the corpus. Across the year, 2,797 donors contributed to MTC for the first time, and our annual end-of-financial year appeal income saw an increase of 9%.

We also welcomed the confirmation of seven new bequestors who have confirmed an inclusion of a gift to MTC in their Wills. These legacy gifts will play an important role in the future of MTC and are warmly appreciated.

For the first time, MTC secured a total grant of \$135,000 over three years from the Department of Education Strategic Partnerships Program (SPP). This Funding will assist in the expansion of our current online presence into MTC Education Online – a multi-channel suite of resources and activities.

In addition to this new grant, 2018 saw the continuation of our long-running and important education-focused philanthropy programs aimed at inspiring the next generation of artists and starting the journey for thousands on their life-long love for the arts.

The generosity and foresight of the Gailey/Lazarus Charitable Foundation meant that 35 schools throughout regional Victoria were able to participate in a range of free and low-cost VCE and production-related workshops through the 2018 Regional Enrichment Program.

In September, 24 young people facing economic, geographic or personal barriers discovered a new found confidence through the course of our intensive week-long drama program, the Betty Amsden Youth Scholarship funded by the Betty Amsden Foundation.

Our Sharing the Light program supported by the Crown Resorts Foundation and Packer Family Foundation allowed over 2,600 students and families from outer-metro and low socio-economic areas to see MTC productions for just \$5 per ticket; provided nearly \$30,000 in travel subsidies to help disadvantaged schools attend the theatre; and gave nine young Aboriginal and Torres Strait Islander People the chance to take part in our year-long First Peoples Young Artists Program.

2018 also continued our ambitious playwright development initiative, the NEXT STAGE Writers' Program and our landmark national Women in Theatre program continued to have an impact on addressing the gender imbalance in the sector.

The programs I have mentioned here are only a few of the many critical donor-funded activities that occurred across the Company in 2018. As MTC becomes an ever more significant part of the cultural fabric of Melbourne, a gift to MTC is a gift which enables us to continue to grow and flourish into the future. Thank you for that show of support and belief that what we do is important.

# ARTISTIC DIRECTOR'S REPORT

## BRETT SHEEHY AO



It was very pleasing that in some ways 2018 marked MTC's most successful artistic program and year yet, thanks in no small part to the generosity of our donors.

and of course the classics *An Ideal Husband* and *Twelfth Night*.

Five of our productions had extended seasons – *The Curious Incident of the Dog in the Night-Time*, *An Ideal Husband*, *A Doll's House Part 2*, *The Architect* and *Twelfth Night* – satisfying unprecedented audience demand.

In 2018 we also embarked on year two of our NEXT STAGE Writers' Program – the largest and most sophisticated playwright development scheme ever undertaken in Australia, made possible by our Playwrights Giving Circle. Activity included 21 development workshops employing 76 actors, musicians, dramaturgs and directors. There are now 20 writers under commission or resident with us, and several NEXT STAGE plays are already being programmed, the first, *Golden Shield*, in 2019, with more poised for production in 2020.

The landmark Women in Theatre Program generously supported by our Women in Theatre Giving Circle donors, continued to create more and more pathways for women into the theatre industry. Our total alumni now constitute a force of 56 women out in the theatre world, working as artistic directors, playwrights, directors, producers, designers, dramaturgs, production and technical

The year resulted in MTC's highest ever box office at \$18.6 million, by a margin of some millions; its highest ever number of subscribers in our recorded history at 22,300 (11% up on the previous year); and its co-winning three of theatre's top four Helpmann Awards – for Best Play (*The Children*), Best Director (our Associate Artistic Director Sarah Goodes) and Best Actress (Pamela Rabe in *The Children*). Linda Cropper also won the Victorian Green Room Award for Best Actress for her astonishing performance in *The Architect*.

The season saw five world premieres – *The Architect*, *Astroman*, *Working with Children*, *Hungry Ghosts* and our bold adaptation of *The House of Bernarda Alba*; five contemporary international works – the critically acclaimed *The Curious Incident of the Dog in the Night-Time*, *Gloria*, *Wild*, *A Doll's House Part 2*, and the courageous, retro-radical production of *Abigail's Party*;

personnel, venue managers, and general managers, all over Australia.

We continued our Cybec Electric play reading series, supported by the late Roger Riordan AM and the Cybec Foundation, predominantly championing the work of some of our finest emerging writers, and continued our NEON NEXT program with the production of *Working with Children*. As well, we presented events in the annual MPavilion program, with two public readings of new plays and one public forum with eminent New York director Lila Neueberger, MTC's 2018 Macgeorge Fellow under the auspices of our parent organisation the University of Melbourne.

To have achieved all this, while also presenting challenging, technically complex and extremely rigorous works is something of which the Company, and you as our donors, should feel immensely proud.

My heartfelt thanks, appreciation and admiration go to our greatest friends and supporters, for your continued commitment and dedication to giving Melbourne, Victoria, Australia and other parts of the world another year of fine theatre.

Thank you.



# EXECUTIVE DIRECTOR'S REPORT

## VIRGINIA LOVETT



2018 was a year full of joy, surprises, record breaking shows, international and national collaborations, sector reflection and reckoning. Thanks to your support, MTC continued to be one

of Australia's leading cultural organisations and the much loved State theatre company of Victoria.

Good things come to those who wait ... or just keep negotiating. After many years of trying to secure the West End and Broadway hit *The Curious Incident of the Dog in the Night-Time* from the National Theatre in London, we were very proud to finally present the show to Melbourne audiences as our season opener.

Collaborating with Arts Centre Melbourne, who presented a range of access and public programs alongside *Curious Incident*, this show reached over 40,000 attendances and drove \$10 million into the Victorian economy. As a result of MTC bringing the show to Melbourne, it went on to tour into Asia and around Australia.

In 2018, MTC achieved a record number of 22,300 subscribers for the Company, the highest for any theatre company in the country for the second year running. The company saw 85% subscriber retention, 38% growth in under 30 subscribers and 40% growth in new subscribers. Single ticket sales were healthy and box office was very strong, enabling the company to invest in future projects.

In 2018 the Company produced 564 performances and employed 574 actors, creatives and industry professionals. We performed to a paid attendance of over 250,000 resulting in a total box office of \$18.6 million. Overall, this year the Company will report \$30.9 million in total revenue with a small operating surplus of \$20,275.

This is a terrific result but with every show a prototype, success is counterbalanced by inherent risk and our budgets continue to come under acute pressure. Box office and other revenues are still heavily relied upon as government subsidy shrinks due to little or no indexation while salaries, production and other costs increase at a rate of CPI or higher.

To address this, we have worked strategically over the years to grow our contributable income and lessen our reliance on earned income. In 2013 private sector support represented 4% of total revenue and in 2018 it is 12%, compared to 7% of government funding. These figures demonstrate the crucial role of philanthropic support and how immensely grateful we are to our loyal community of donors who continue to champion the power of live storytelling, year after year.

The quality and sheer excellence of Melbourne Theatre Company's production, workshop, costume and technical teams absolutely shone in 2018 – from the magnificent costumes in *An Ideal Husband* and *Twelfth Night* to the technicality and complexity behind the sets of *Wild* and *Gloria*. Our behind the scenes teams at MTC contribute an extraordinary wealth of expertise from stage managers, riggers, milliners, tailors, props makers, lighting technicians, welders, carpenters to front of house and box office staff – they all come together in a magical alchemy to make a visit to the theatre a memorable and enjoyable experience. Thank you for ensuring we have the resources to fulfil the artistic vision and strategic direction of the Company.

One of the highlights of my year are the donor events I have the pleasure of hosting. MTC is very fortunate to have a committed, engaged group of donors whose investment in the company enables us to continue to produce shows of excellence, create access programs for the disadvantaged and broaden our reach through our award-winning education program.

I would like to pass on my gratitude to you, without whom these programs and MTC's annual season of word-class theatre would simply not be possible. Thank you for your commitment to making MTC the best company it can be.

Thank you.

# MTC 2019 DONOR SEASON PREVIEW AND THANK YOU EVENT

We were thrilled to share our 2019 season with our community of donors at The Langham, Melbourne.



Tom O'Dea, Margaret Astbury, Pam Caldwell, Marian Coomer and Jane Allen



Viorica and Paul Samson



Anna Maria Perola and Angelina Beninati



Rosemary Forbes and Pinky Watson



Sandy and Yvonne Constantine



Tony Hillery, Heather Finnegan, Warwick Eddington and Laurel Das





## LIFETIME PATRONS

Maureen Wheeler AO and Tony Wheeler AO

MTC's Lifetime Patron Award was established to recognise and celebrate the extraordinary support of our most loyal patrons and acknowledge their significant contribution to the enrichment of theatre and the arts throughout Victoria and Australia. In 2018, Maureen Wheeler AO and Tony Wheeler AO were awarded this special honour.

In presenting the award MTC Executive Director & Co-CEO Virginia Lovett said, 'Maureen and Tony are amongst our most dedicated and passionate supporters and we are delighted to recognise their important role in making MTC the company that it is today.'

'They have been long-time supporters of MTC, as audience members, donors and

champions of Australian work. It is their philanthropic leadership that helped make our NEXT STAGE Writers' Program a reality and it is their continued advocacy, generosity and vision that makes them an inspiration to us all.'

In response Maureen said, 'Tony and I have had a long involvement with MTC, and have watched it grow and become an ever more significant part of the cultural fabric of Melbourne. It is a huge honour to be given this award. It feels somewhat undeserved, but to be recognised by an institution which has given us both so much pleasure over so many years is incredibly humbling.'

## DONOR EVENTS AT MTC



Guests at the Artistic Director's Giving Circle end of year dinner





Jan Nolan, Frank Woodley,  
Pat and Julie Burke

(Above left) Aileen Huynh  
and Deborah Conyngham

(Above right) Guests at the  
Wild pre-show dinner



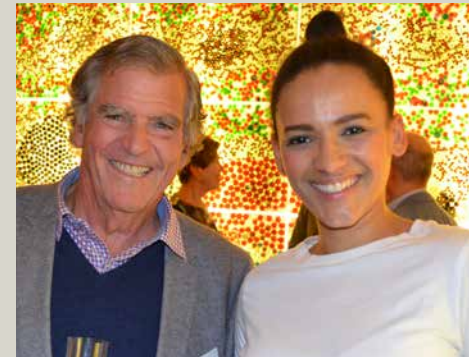
Sarah Goodes, Shareena Clanton and Diana Burlleigh



Warwick Eddington, Nicholas Denton and Tony Hillery



Guests at The House of Bernarda Alba post-show dinner



John Coleman and Zindzi Okenyo



Jock Jeffries, Pamela Rabe and Jenny Jeffries



Andrew McAlicee, Gina Riley and Andrew Buchanan



Monique Warren, Calen Tassone and Josh White



# DONATIONS IN ACTION







# SHARING THE LIGHT

The MTC Sharing the Light Program continues to have a significant impact on the lives of young Victorians, thanks to the generous support of the Crown Resorts and Packer Family Foundations. The initiative is comprised of four programs which thrive and grow, giving access to the transformative power of theatre for young people and families across the state and beyond.

## \$5 STUDENT THEATRE PASS

Subsidised \$5 tickets for students experiencing socio-economic disadvantage to attend MTC mainstage, education and family productions. Travel subsidy is also offered to schools in regional areas of Victoria to reduce geographical and financial barriers in getting to the theatre.

**Total travel subsidy provided to schools:**  
\$29,688

## \$5 FAMILY THEATRE PASS

Subsidised \$5 tickets are available to families in outer-metro Melbourne for nominated MTC productions.

**Total tickets provided to Students and Families in 2018: 2,714**

*(Opposite, top) Students at A Doll's House, Part 2 post-show Q&A; (bottom) \$5 ticket recipients*



### FIRST PEOPLES YOUNG ARTIST PROGRAM

A scholarship for young First Nations and Torres Strait Islander Peoples interested in the performing arts, offered by MTC, in partnership with the Wilin Centre for Indigenous Arts and Cultural Development. The program features a series of workshops on performance skills, writing for the stage, technical and design production, and arts marketing. Under the mentorship of Indigenous teaching artists and facilitators, as well as experienced MTC staff and

creatives, the program culminates in a group-devised performance for family and friends staged at Southbank Theatre.

In 2018, there were participants from Darwin, Perth, Adelaide, Canberra, Melbourne and regional Victorian towns Stawell, Kinglake and Bendigo.

**Participants:** 9

**Lead Teaching Artist:** Lenka Vanderboom

(Above) First Peoples Young Artist program; (opposite) the Hungry Ghosts cast on the regional tour



### MTC EDUCATION ON TOUR

In 2018, *Hungry Ghosts* travelled as a full-scale production to regional performing arts centres. Pre-show talks were held before every performance, facilitated by MTC's Producer, Development Programs, Karin Farrell.

**Venues visited:** 6

- Ulumbarra Theatre, Bendigo
- Mildura Arts Centre
- The Potato Shed, Geelong
- Launceston College, Tasmania
- Wangaratta Performing Arts Centre
- The Wedge, Sale



MTC sincerely thanks the Packer Family Foundation and Crown Resorts Foundation for their commitment to ensuring theatre is accessible to all young people throughout Victoria.



# REGIONAL ENRICHMENT

MTC's Regional Enrichment Program, supported by the Gailey/Lazarus Foundation, provides an opportunity for students in regional Victoria to deeply engage with MTC's annual Education Production, MTC's production of *Macbeth*, or participate in a VCE Theatre Studies or Drama workshop. In 2018, Students and teachers from 35 regional schools participated in MTC enrichment programs.

## HUNGRY GHOSTS WORKSHOPS

- St Mary MacKillop College, Swan Hill
- Bellarine Secondary College, Drysdale
- Stawell Secondary College

**Teaching Artists:** Jane Bayly and Nick Tranter

**Total Participants:** 31 students

## MACBETH WORKSHOPS

- Traralgon College

**Teaching Artists:** Suzie Thomas and Nick Tranter

**Total Participants:** 31 students

MTC thanks Geraldine Lazarus and the Gailey/Lazarus Foundation for their exceptionally generous support of MTC's Regional Enrichment Program.

*(Opposite, top) Hungry Ghosts workshop at St Mary MacKillop College, Swan Hill; (bottom) Macbeth workshop at Traralgon College*







# MTC AMBASSADORS

‘The MTC Ambassadors program has been one of the most rewarding experiences of my life. Through our conversations with some truly talented people from MTC, we’ve really received an insight into the ins and outs of the Theatre World’

— Mia, 2018 MTC Ambassador

Each year, a group of outstanding Year 11 students benefit from a unique insight into Melbourne Theatre Company on and off stage to develop analytic and artistic knowledge they can share with their peers.

Since its inception in 2010, MTC has welcomed over 145 Year 11 theatre-lovers into the Company for an unforgettable year of theatre experiences.

Ambassadors are exposed to the inner workings of Australia’s oldest professional theatre company through a series of guest speakers, workshops and the chance to see MTC productions. These enable participants to increase their knowledge of the arts industry and improve their networking and communication skills. They develop personal growth in building confidence and friendships with a diverse group of students who have a shared love of theatre.

We thank our Youth Ambassador Circle Donors in 2018 for investing in the next generation of theatre-makers: Melody and Jonathan Feder; Heather Forbes-McKeon; Bruce Freeman; Linda Herd; Larry Kornhauser and Natalya Gill; Ging Muir and John McCawley; Tom and Ruth O’Dea; Roslyn and Richard Rogers Family; Aaron and Lorraine Schwartz; Suzy and Dr Mark Suss; Kevin and Elizabeth Walsh; Jan Williams.

*(Opposite) 2018 MTC Ambassadors outside MTC HQ*



# BETTY AMSDEN YOUTH SCHOLARSHIP COURSE

The Youth Scholarship Course, which is named in memory of the late Betty Amsden AO DSO, is provided at no cost to the participants and their families thanks to the generous support of the Betty Amsden Foundation.

The program is aimed at students who would not otherwise have access to extra-curricular drama programs due to economic, educational, geographic or personal barriers. Students have a chance to develop their self-esteem, confidence and theatre practice skills through workshops in the Lawler, Southbank Theatre.

A total of 24 students aged between 14 and 16 participated in the 2018 program, travelling from regional towns including Shepparton, Wodonga, Tyntynder South, Ararat, Mount Duneed, Inverloch, Briagolong, Fernihurst, Long Forest, Warrnambool and Mortlake, as well as outer-metro and Melbourne city suburbs.

The Betty Amsden Youth Scholarship Course joins like-minded students from across the state to access theatrical possibilities and in doing so, form life-long friendships and a life-long love of theatre.

MTC gratefully acknowledges the generous support of the Betty Amsden Foundation.

*(Both pages) Betty Amsden Youth Scholarship Course participants*

‘This course has been one of the most memorable experiences I’ve ever had and has not only helped build my confidence but has opened me up to the countless opportunities I could pursue within theatre.’

— 2018 Participant







‘Being afforded an insight into the inner workings of a state theatre company has given me massive amounts of food for thought to take back to my own practice. Furthermore the creative conversations with MTC staff, my peers and my mentor have been incredibly inspirational and I end the program excited about what could be achieved in my area of practice’

— 2018 participant

# WOMEN IN THEATRE

MTC’s industry-leading Women in Theatre Program helps create opportunities for women pursuing careers in a range of disciplines from production to artistic and executive management.

The program provides the chance for participants to be mentored by respected theatre practitioners; take part in intensive leadership training; access practical career advice and coaching across a wide range of business and commercial aspects of the theatre industry; and gain insights to the daily operation of a major performing arts organisation.

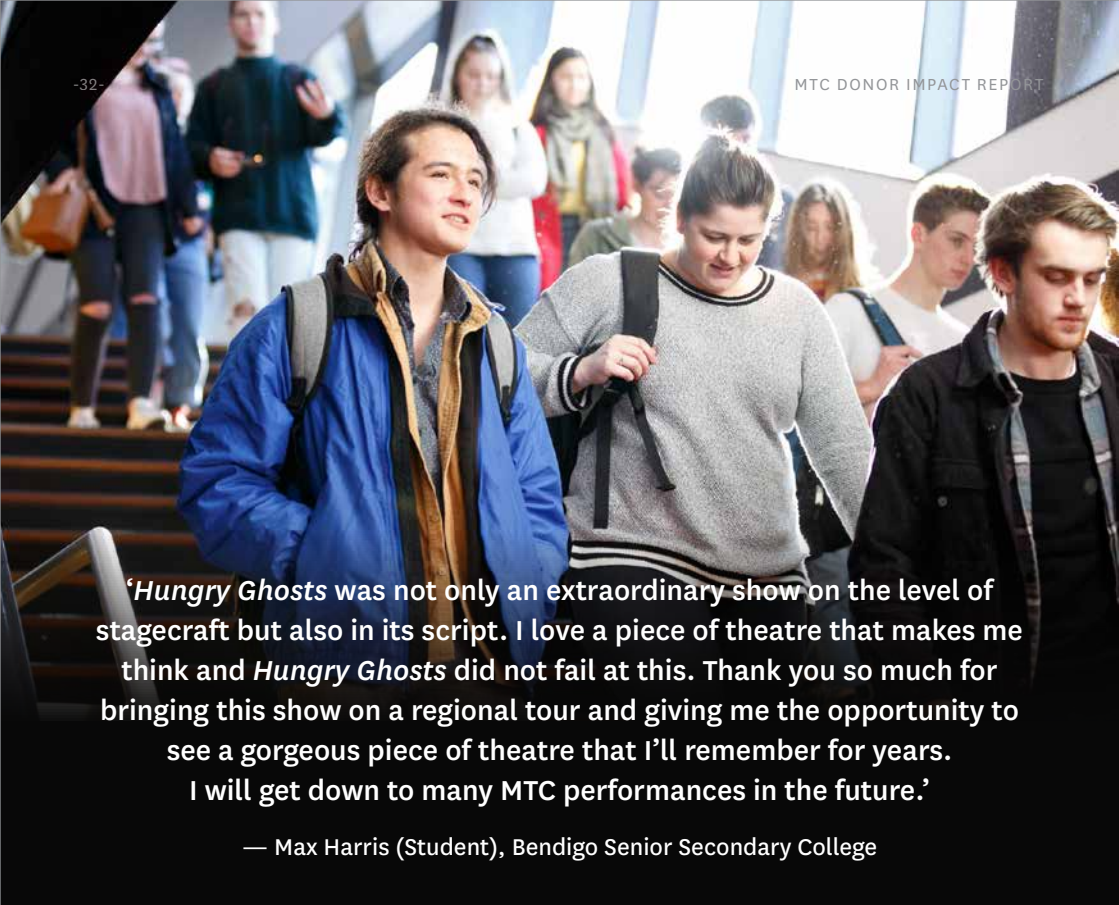
## 2018 PARTICIPANTS

- Anne Bravos** *Scenic Art Mentor* Tansy Elso
- Kat Chan** *Set & Costume Design Mentor* Christina Smith
- Siobhan Connors** *Emerging Producer Mentor* Martina Murray
- Tahli Corin** *Artistic Director Mentor* Brett Sheehy
- Susannah Day** *Executive Director & Operations Mentor* Virginia Lovett
- Tasnim Hossain** *Dramaturgy & Literary Management Mentor* Chris Mead
- Anna Kerrigan** *Education & Outreach Mentor* Sue Giles
- Lauren Makin** *Production Management Mentor* Michele Preshaw
- Sidney Millar** *Sound Design & Composition Mentor* Russell Goldsmith
- Scarlet McGlynn** *Director Mentor* Sarah Goodes
- Clare Springett** *Lighting Design Mentor* Paul Jackson
- Katy Warner** *Playwright Mentor* Hannie Rayson

MTC thanks our 2018 Women in Theatre Giving Circle Donors who make this program possible: Tara Bishop; Jacinta Carboon; Diana Cregan; Tania de Jong AM; Christine Gilbertson; Growth Mantra; Charles and Cornelia Goode Foundation; Fiona Griffiths and Tony Osmond; Jane Grover; Barbie and Jim Higgins; Jane Hodder; Janette Kendall; Pamela Lamaro; Lord Family; Helen Mantzis; Dr Sam and Belinda Margis and NEST Family Clinics; Kim and Peter Monk; Leigh O’Neill; Prof Hannah Piterman; Caecilia Potter; Anne and Mark Robertson OAM; Kaylene Savas; Annette Smorgon; Debra and Richard Tegoni, The Robert Salzer Foundation; Marion Webster OAM; Anonymous (2)

(Opposite) 2018 Women in Theatre Program Participants





*'Hungry Ghosts was not only an extraordinary show on the level of stagecraft but also in its script. I love a piece of theatre that makes me think and Hungry Ghosts did not fail at this. Thank you so much for bringing this show on a regional tour and giving me the opportunity to see a gorgeous piece of theatre that I'll remember for years. I will get down to many MTC performances in the future.'*

— Max Harris (Student), Bendigo Senior Secondary College



# MTC EDUCATION GIVING CIRCLE

MTC Education enhances the theatre experience for young people, helps map career pathways in performing arts and strengthens MTC's current and future audiences. Our award-winning education programs are supported by MTC's Education Giving Circle. Thanks to this like-minded group of donors, thousands of students have access to world-class theatre, learning opportunities with industry professionals and a chance to work with their peers to develop theatre of their own.

Engaging with theatre has transformative possibilities. Our award winning programs enrich the learning of Young Victorians responding to theatre and directly support the development of the next generation of Australian theatre-makers.

Thanks to our donors, in 2018 MTC Education:

- Produced an annual education production, *Hungry Ghosts* by Jean Tong, which was the ideal introduction to non-naturalism for Year 10 and VCE drama students, and included an eclectic mix of performance styles and innovative stage design.
- Illuminated the experience and gave insight into the process of making theatre through Education Packs, Pre-Show talks, Post-Show Q&A sessions, and behind-the-scenes videos.
- Provided the opportunity to peek behind the curtain and experience the inner-workings of a professional theatre company through the secondary school work experience program and MTC HQ Tours.
- Helped aspiring theatre-makers develop their craft through VCE Drama and Theatre Studies workshops.
- Ensured accessibility to our mainstage season for young Victorians and their teachers through affordable school tickets.

MTC sincerely thanks the Victorian Department of Education and Training and our Education Giving Circle Donors who share our belief in the power of the theatre to transform young lives: Joanna Baevski; Prof Barry Conyngham AM and Deborah Conyngham; Tom and Elana Cordiner; Rowen Craigie; Ann Darby; Ellen and Cameron Easton; Glenn Fryer; Jane Hansen and Paul Little AO; Mark and Jennifer Hayes; Linda Herd; Virginia Lovett and Rose Hiscock; The Mann Family; Richard Murphy; Jacquie Naylor; Brian Doyle AM and Anne O'Donovan AO; Susan Oliver AM; Hilary and Stuart Scott; Debra and Richard Tegoni; Anonymous (7)

(Opposite from top) Students exiting Southbank Theatre following a Q&A with the cast of *A Doll's House, Part 2*; work experience student Olivia Di Grazia education

# LITERARY DEVELOPMENT

## CYBEC ELECTRIC

Cybec Electric 2018 ran from 19 February to 3 March and showcased eight emerging playwrights through the development of eight brand new works. This mix of excerpts and full plays were brought to life by a talented team of actors, directors and dramaturgs including nine MTC staff and four VCA interns.

Participants took part in 10 days of developments and rehearsals, followed by three evenings of public readings in the Lawler, Southbank Theatre. Playwrights involved were able to test material of scope and ambition created in Melbourne with a cast of professional actors, in front of an audience. In 2018, Cybec Electric was attended by 653 people.

MTC thanks the late Dr Roger Riordan AM and The Cybec Foundation for their generous dedication to Cybec Electric.

**‘Cybec Foundation granted me the time, space and dramaturgical support to push my play to its limits and come out of it with a play I’m proud to have written.’**

— Anchuli Felicia King, 2018 Cybec Playwright

## VIZARD LITERARY DEVELOPMENT PROGRAM

The Vizard Foundation awarded MTC with a three year grant in 2015, enabling considerable expansion of its literary capabilities through the Vizard Literary Development Program. This grant has allowed MTC to develop many new Australian plays each year and better program for the future. In 2018 a significant number of new Australian plays were read, discussed and workshopped, and played a critical role in determining the program direction for MTC, creating opportunities, encouragement and employment for emerging Australian talent.

2018 activity included five workshops, a research trip to Papunya in the Northern Territory, an invitation to become part of the prestigious Banff Playwright’s Lab held at the Banff Centre for Arts and Creativity in Canada, and the creation of the new FIRST STAGE Play Reading Series.

We acknowledge the Vizard Foundation for their generous, continued support of this important program that ensures valuable opportunities for Australian playwrights and, in turn, the future of challenging, inspirational and relevant Australian Theatre.



## CLEMENGER COMMISSIONS

The Clemenger Commissions continue to be a fundamental part of MTC’s new play repertoire. In 2018, MTC produced two works from the Joan and Peter Clemenger Commissions – *Hungry Ghosts* by Jean Tong as our 2018 Education Show and Aidan Fennessy’s *The Architect* as part of our 2018 mainstage season. Though not all commissions make it to production, the Clemenger Commissions allow playwrights to make the most of their extraordinary

writing talents and create ground-breaking, original Australian plays.

Writers under commission:

- Kylie Coolwell
- Judith Lucy
- Damien Millar
- Ross Mueller
- Magda Szubanski AO
- Anthony Weigh

We thank Joan Clemenger AO and Peter Clemenger AO for their extraordinary generosity and vision.

(Above) Cybec Electric 2018 in rehearsal



# NEXT STAGE



Co-funded by MTC and the donors and foundations of MTC’s Playwrights Giving Circle, the NEXT STAGE Writers’ Program is MTC’s five-year, \$4.6 million initiative. The program addresses the need for greater investment in Australian writers through increased resources dedicated to commissioning, workshopping and developing plays. The pioneering program allows MTC to both build on existing and foster new artistic relationships over the long-term and on a scale that was previously unattainable.

In July 2018, seven new writers were commissioned through the NEXT STAGE program, joining those already underway with the development of new works:

- Angus Cerini
- Patricia Cornelius
- Louris van de Geer (2018 commission)
- Michael Gow
- Tom Holloway (2018 commission)
- Anchuli Felicia King (2018 commission)
- Benjamin Law
- Joanna Murray-Smith
- Ellen van Neerven

(Above) NEXT STAGE play reading at MPavilion; (opposite) NEXT STAGE writers in residence at donor lunch



- Joe Penhall (2018 commission)
- Leah Purcell
- Chris Ryan (2018 joint commission)
- Megan Washington (2018 joint commission)
- Mark Leonard Winter (2018 joint commission)
- Declan Furber Gillick (2018 writer-in-residence)
- Dan Giovannoni
- Melissa Reeves (2018 writer-in-residence)
- Chris Summers (2018 writer-in-residence)
- Natesha Somasundaram
- Kylie Trounson

MTC welcomed three new writers-in-residence in July 2018, while the inaugural residents entered their second year with the Company, each securing a commission to develop a new work for NEXT STAGE:

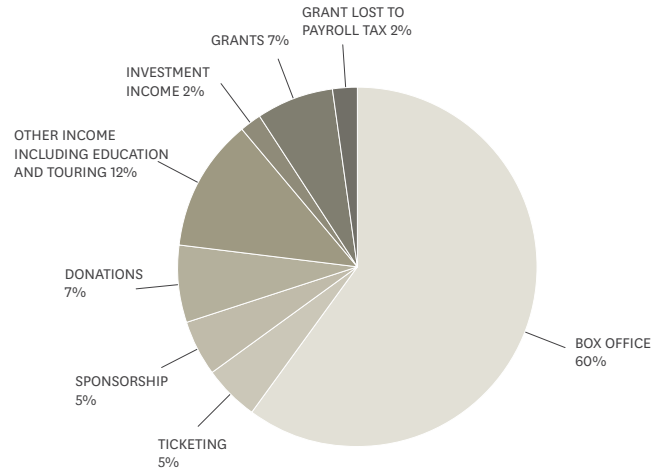
NEXT STAGE is made possible by MTC’s Playwrights Giving Circle:

Louise Myer and Martyn Myer AO; Maureen Wheeler AO and Tony Wheeler AO; Christine Brown Bequest; Allan Myers AC QC and Maria Myers AC; Tony Burgess and Janine Burgess; Dr Andrew McAlicee and Dr Richard Simmie; Larry Kamener and Petra Kamener.

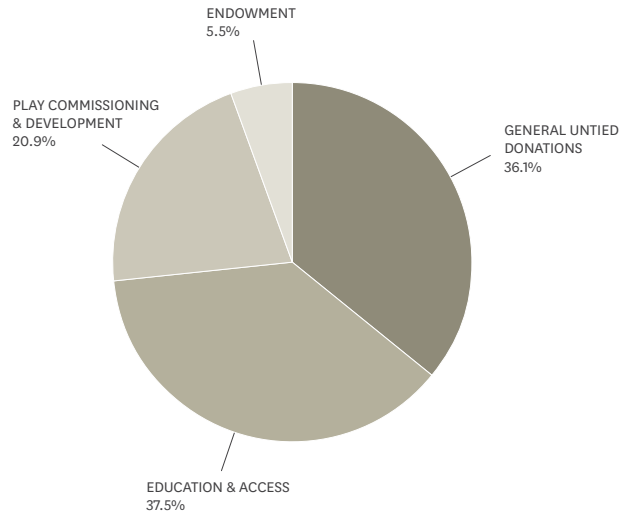


# 2018 FINANCIAL REPORT

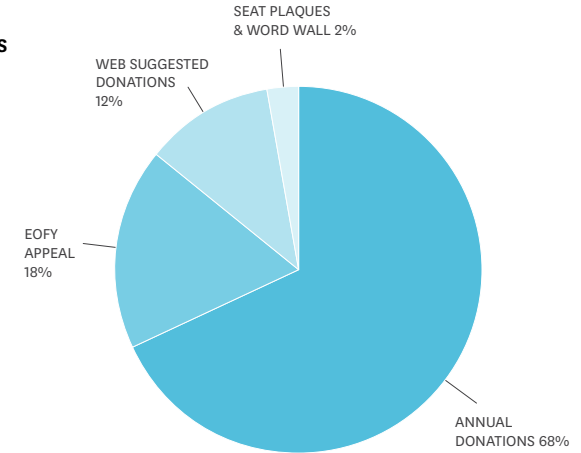
**MTC'S 2018 INCOME  
TOTALLING \$30.9M**



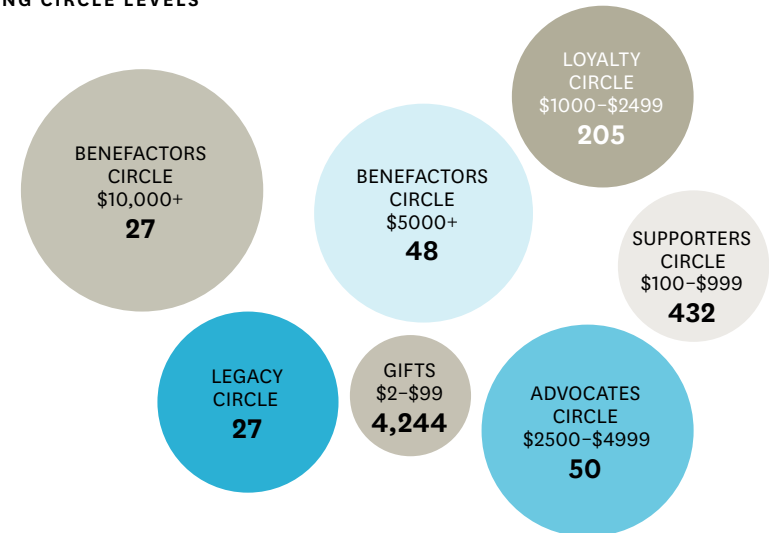
**TOTAL DONATIONS  
(EQUALLING 7% OF  
MTC'S INCOME)**



**BREAKDOWN OF  
UNTIED DONATIONS**



**NUMBER OF DONORS  
BY GIVING CIRCLE LEVELS**





# MTC FOUNDATION BOARD

## Jane Hansen – Chair

Inaugural Chair of MTC Foundation; Deputy Chancellor and Member of the University of Melbourne Council, Deputy Chair of Believe Campaign and Member of Humanities Foundation Board of University of Melbourne; Board Member of the Lord Mayors Charitable Foundation; Board Member of Opera Australia; Chair and CEO of the Hansen Little Foundation; previously on the Boards of the MCG Trust, the State Sport Centres Trust, the Federal body of Athletics Australia and the Foundation of the State Library of Victoria. MTC Foundation Chair since August 2015.

## Paul Bonnici

Chair of RMIT Fashion Design & Enterprise advisory Board, Board Member of the National Gallery of Victoria Foundation Board; formerly Chair of Melbourne Spring Fashion Week, Board Member Olivia Newton John Cancer and Wellness Centre Appeals Board, Managing Director of Create & Communicate 2c, Director – Marketing and Creative at Myer Stores Pty Ltd; MTC Foundation Board Member since July 2018.

## Terry Bracks AM

Founding Chair of Western Chances; Patron of Heide Gallery and the Williamstown Literary Festival; formerly a board member of Breast Cancer Network Australia, the National Film and Sound Archive, the Australian Children's Television Foundation; and a past Trustee of the Victorian Arts

Centre Trust. Currently Executive Officer for the Balibo House Trust. MTC Foundation Board member since March 2015.

## Liz Chappell

MTC Finance Director; MTC Foundation Board member since March 2015.

## Fiona Griffiths

Board Member of Ruyton Girls' School; Chair of Ruyton Girls' School Foundation Board; former School Council President Auburn Primary School; formerly ANZ Group Strategy, ANZ Legal Group and a senior associate at DLA Phillips Fox. MTC Foundation Board Member March 2015 — November 2018.

## Janette Kendall

Non-executive director of Vicinity Centres, Costa Group, and Wellcom Worldwide; previously on the boards of Nine Entertainment, the Melbourne International Festival of the Arts, AURL Foodworks, Clemenger BBDO; former Senior Vice President at Galaxy Entertainment Group, China. MTC Board Member; MTC Foundation Board Member since March 2015.

## Jayne Lovelock

MTC Development Director; MTC Foundation Board since March 2017.

## Virginia Lovett

MTC Executive Director and Co-CEO; MTC Foundation Board member since March 2015.

## Dr Sam Margis

Director, Founder and Consultant Perinatal Psychiatrist at the NEST group of Family Clinics; Visiting specialist Psychiatrist Cabrini Hospital; Graduate of Monash University Medical School; Fellow of Royal Australian and New Zealand College of Psychiatrists; Former Board Member of the Mercy Health Foundation. MTC Foundation Board Member January 2016 — November 2018.

## Louise Myer

Founder and owner, Whare Kea Lodge, New Zealand; 2013 Relais & Chateaux Woman of the Year; trained at Hotel de Varenne, Paris; prominent Melbourne Philanthropist and generous supporters of the Arts. MTC Board since January 2016.

## Leigh O'Neill

Executive General Manager, Business Direct and Small Business in Business and Private Banking NAB; Chair of Chunky Move; formerly General Manager for NAB Private Wealth in Victoria and Board member for the Griffin Theatre Company Board and the Ilhan Food Allergy Foundation. MTC Foundation Board member since March 2015.

## Hilary Scott

Senior Counsel, GFG Alliance; previously Corporate Counsel, Kin Group Pty Ltd (formerly including Pact Group Holdings); Legal Counsel, Pact Group Holdings; Legal

Counsel, Symbion formerly Mayne Group Limited; Lawyer, Deacons (now Norton Rose Fulbright). MTC Foundation Board member since January 2016.

## Tracey Sisson

Consult Legal; formerly Director of Law Institute Victoria; formerly TeeRoy Pty Ltd TA Yardmill In-house Counsel, Molino Cahill Lawyers Senior Associate, Baker & McKenzie General Associate; Member, Law Institute of Victoria and Fitzroy Legal Service; Former Director, Law Institute of Victoria; Former Fellow, Taxation Institute of Australia; Former Registered Tax Agent. MTC Foundation Board Member since July 2018.

## Richard Tegoni

Chief Operating Officer and Company Secretary of Melbourne University Publishing Ltd.; Executive Chairman at SECOS Group Limited (a/k/a, Cardia Bioplastics Limited); former Senior Executive of Optus Communications. MTC Board Member since January 2016.

## MTC Philanthropy Team

Jayne Lovelock	Director of Development
Sophie Boardley	Major Gifts Manager
Chris Walters	Annual Giving Manager
Mandy Jones	Events Manager
Patrick Crummy	Philanthropy Coordinator

# MTC CIRCLES OF GIVING

MTC gratefully acknowledges our visionary donors

## MTC LIFETIME PATRONS

*Acknowledging a lifetime of extraordinary support for MTC.*

Pat Burke	Allan Myers AC QC and Maria Myers AC	The Late Dr Roger Riordan AM Maureen Wheeler AO and Tony Wheeler AO	Caroline Young and Derek Young AM
Peter Clemenger AO and Joan Clemenger AO	The Late Biddy Ponsford		

## ENDOWMENT DONORS

*Supporting the long term sustainability and creative future of MTC.*

### LEADING ENDOWMENT DONORS

#### \$1,000,000+

Jane Hansen and  
Paul Little AO  
The University of Melbourne

#### \$50,000+

Geoffrey Cohen AM  
Orcadia Foundation  
The Late Biddy Ponsford  
Andrew Sisson AO and  
Tracey Sisson

#### \$20,000+

Tony and Janine Burgess  
Anne and Mark Robertson OAM

#### \$10,000+

Prof Margaret Gardner AO  
and Prof Glyn Davis AC

#### \$5,000+

R & P Harkness  
Jane Kunstler  
Renzella Family  
Anonymous

#### \$1,000+

Virginia Lovett and  
Rose Hiscock

## MTC'S PLAYWRIGHTS GIVING CIRCLE

*Supporting the Next Stage Writers' Program.*

Louise Myer and Martyn Myer AO, Maureen Wheeler AO and Tony Wheeler AO, Christine Brown Bequest  
Allan Myers AO QC and Maria Myers AO, Tony Burgess and Janine Burgess  
Dr Andrew McAlicee and Dr Richard Simmie, Larry Kamener and Petra Kamener



NAOMI  
MILGROM  
FOUNDATION



## ANNUAL GIVING

*Donors whose annual gifts help MTC enrich and transform lives through the finest theatre imaginable.*

### BENEFACTORS CIRCLE

#### \$250,000+

Crown Resorts Foundation  
Packer Family Foundation

#### \$50,000+

The Joan and Peter  
Clemenger Trust  
The Cybec Foundation  
Maureen Wheeler AO and  
Tony Wheeler AO

#### \$20,000+

Betty Amsden Foundation  
Dr Geraldine Lazarus and  
Greg Gailey  
Jane Hansen and  
Paul Little AO  
Louise and Martyn Myer AO  
Victorian Department of  
Education and Training  
The Vizard Foundation  
Caroline and  
Derek Young AM  
Anonymous

#### \$10,000+

Erica Bagshaw  
Joanna Baevski  
The Cattermole Family  
Tom and Elana Cordiner  
Christine Gilbertson  
Linda Herd  
The Lord Mayor's Charitable  
Foundation  
The Macgeorge Bequest  
The late Mr Noel Mason and  
Susanna Mason  
Craig Semple  
Dr Caroline Thew  
Luisa Valmorbida  
Anonymous (2)

#### \$5,000+

John and Lorraine Bates  
Sandy Bell and Daryl  
Kendrick  
Bill Bowness AO  
Dr Andrew Buchanan and  
Peter Darcy  
Ian and Jillian Buchanan  
Sandra and Bill Burdett AM  
Pat Burke and Jan Nolan  
John and Robyn Butselaar  
The Janet and Michael  
Buxton Foundation  
Barry and Joanne  
Cheetham  
The Dowd Foundation

Gjergja Family  
Leon Goldman  
Robert and Jan Green  
David and Lily Harris  
Jane Hemstrich  
Bruce and Mary Humphries  
Karen Inge and  
Dr George Janko  
Anne Le Huray  
Marshall Day Acoustics  
(Dennis Irving  
Scholarship)  
Ian and Judi Marshman  
Matsarol Foundation  
Ian and Margaret McKellar  
George and Rosa Morstyn  
Daniel Neal and  
Peter Chalk  
Tom and Ruth O'Dea  
Leigh O'Neill  
Dr Kia Pajouhesh  
(Smile Solutions)  
In loving memory of  
Richard Park  
Bruce Parncutt AO  
Prof David Penington AC  
and Dr Sonay Hussein  
Jeanne Pratt AC  
Janet Reid OAM and  
Allan Reid  
Kendra Reid  
Renzella Family  
Trawalla Foundation Trust  
Andrew Sisson AO and  
Tracey Sisson  
The Robert Salzer  
Foundation  
Ralph Ward-Ambler AM  
and Barbara Ward-  
Ambler  
Anonymous (6)

### ADVOCATES CIRCLE

#### \$2,500-\$4,999

Marc Besen AC and  
Eva Besen AO  
Jay Bethell and Peter  
Smart  
Lynne and Rob Burgess  
Diana Burleigh  
Jenny and  
Stephen Charles AO  
Diana Cregan  
The Cuming Bequest  
Debbie Dadon AM  
Ann Darby

Dr Anthony Dortimer and  
Jillian Dortimer  
Melody and  
Jonathan Feder  
Dr Helen Ferguson  
Rosemary Forbes and  
Ian Hocking  
Bruce Freeman  
Gaye and John Gaylard  
Heather and Bob  
Glindemann OAM  
Henry Gold  
Roger and Jan Goldsmith  
Murray Gordon and  
Lisa Norton  
Lesley Griffin  
Tony Hillery and Warwick  
Eddington  
Peter and Halina Jacobsen  
Irene Kearsey and  
Michael Ridley  
Janette Kendall  
Elizabeth Laverty  
Alex and Halina Lewenberg  
Virginia Lovett and  
Rose Hiscock  
Dr Sue McNicol QC  
Kim and Peter Monk  
Ging Muir and  
John McCawley  
Sandy and Sandra  
Murdoch  
Jane and Andrew Murray  
Dr Paul Nisselle AM and  
Sue Nisselle  
Fiona Griffiths and  
Tony Osmond  
Hilary and Stuart Scott  
Lynne Sherwood and the  
late Tim Sherwood  
Ricci Swart  
Debra and Richard  
Tegoni  
Cheryl and Paul Veith  
Price and Christine  
Williams  
Margaret and Ray  
Wilson OAM  
Gillian and Tony Wood  
Laurel Young-Das and  
Heather Finnegan  
Anonymous (5)

### LOYALTY CIRCLE

#### \$1,000-\$2,499

Dr Katie Allen and  
Malcolm Allen  
Prof Noel Alpins AM and  
Sylvia Alpins  
In memory of  
Nicola Andrews  
Valma E. Angliss AM  
James and Helen Angus  
Kate Aplin  
Margaret Astbury  
Ian Baker and  
Cheryl Saunders  
John and Dagnija Balmford  
Heather Bamford  
Sandra Beanham  
Angelina Beninati  
Tara Bishop  
David and Rhonda Black  
Diane and Graeme Boyer  
Steve and Terry Bracks AM  
Jenny and Lucinda Brash  
Tamara Brezzi  
Bernadette Broberg  
Beth Brown and  
Tom Bruce AM  
Julie Burke  
Katie Burke  
Hugh Burrill and  
Dr Meridee Flower  
Pam Caldwell  
Alison and John Cameron  
John and Jan Campbell  
Jessica Canning  
Clare and Richard Carlson  
Fiona Caro  
Kathleen Cator  
Chef's Hat  
Chernov Family  
Keith Chivers and Ron Peel  
Sue Clarke and  
Lindsay Allen  
Assoc Prof Lyn Clearihan  
and Dr Anthony Palmer  
Dr Robin Collier and  
Neil Collier  
Sandy and Yvonne  
Constantine  
Prof Barry Conyngham AM  
and Deborah Conyngham  
Dr Cyril Curtain  
Mark and Jo Davey  
The Late Jocelyn Davies  
Tania de Jong AM  
Mark and Amanda Derham  
Katharine Derham-Moore  
Robert Drake  
Bev and Geoff Edwards  
George and Eva Ermer  
Anne Evans and  
Graham Evans AO  
Marian Evans  
Dr Alastair Fearn  
Cathryn Findlay  
Grant Fisher and  
Helen Bird  
Jan and Rob Flew  
Heather Forbes-McKeon  
Elizabeth Foster  
Glenn Fryer  
John Fullerton  
Kate Galvin  
Nigel and Cathy Garrard  
Diana and  
Murray Gerstman  
Gill Family Foundation  
Brian Goddard  
Charles and Cornelia  
Goode Foundation  
Sarah Graff  
Isabella Green OAM and  
Richard Green  
John and Jo Grigg  
Jane Grover  
Ian and Wendy Haines  
Charles Harkin  
Mark and Jennifer Hayes  
The Hon Peter Heerey AM  
QC and Sally Heerey  
Barbara Higgins  
Jane Hodder  
Sandi and Gil Hoskins  
Emeritus Prof Andrea  
Hull AO  
Ann and Tony Hyams AM  
Peter Jaffe  
Denis and Elissa Joachim  
Ed and Margaret Johnson  
Prof Shitij Kapur and  
Dr Sharmistha Law  
Katherine Kavakos  
Malcolm Kemp  
Julie and Simon Kessel  
Liana Kestelman  
Fiona Kirwan-Hamilton  
and Simon E Marks QC  
Doris and Steve Klein  
Larry Kornhauser and  
Natalya Gill  
Alan and Wendy Kozica  
Josephine and Graham  
Kraehe AO



- |  |   |  |   |
|--|---|--|---|
| Pamela Lamaro ◆<br>The late Rosemary Leffler<br>Joan and George Lefroy<br>Leg Up Foundation<br>Alison Leslie<br>Dr Caroline Liow<br>Peter and Judy Loney<br>Lord Family<br>Dr Peter and<br>Amanda Lugg◆<br>Elizabeth Lyons<br>Ken and Jan Mackinnon<br>John Mann and Tina Mitas ●<br>Helen Mantzis ◆<br>Chris and Bruce Maple<br>Dr Sam and Belinda<br>Margis and NEST<br>Family Clinics ◆<br>Dr Hannah Mason<br>Margaret and<br>John Mason OAM<br>Don and Sue Matthews<br>Garry McLean<br>Elizabeth McMeekin<br>Emeritus Prof Peter McPhee<br>and Charlotte Allen<br>Robert and Helena<br>Mestrovic | John G Millard<br>Ross and Judy Milne-Pott<br>Susan and Michael<br>Minshall<br>Felicity and Des Moore<br>Barbara and David Mushin<br>Jacquie Naylor ◆◆<br>Nelson Bros Funeral<br>Services<br>Nick Nichola and<br>Ingrid Moyle<br>Susan Oliver ●<br>Dr Harry and Rita<br>Perelberg<br>Dr Annamarie Perlesz<br>Peter Philpott and<br>Robert Ratcliffe<br>Prof Hannah Piterman ◆<br>Betty and George Pizzey<br>Dug and Lisa Pomeroy<br>Noel and Gaylene Porter<br>John and Joan Pye<br>Sally Redlich<br>Victoria Redwood<br>Christopher Richardson<br>Phillip Riggio<br>Anne and<br>Mark Robertson OAM ◆ | Roslyn and Richard<br>Rogers Family ■<br>Sue Rose<br>Rae Rothfield<br>Linda Rubinstein and<br>Paul Slape ●<br>Anne and Laurie Ryan<br>F & J Ryan Foundation<br>Edwina Sahhar<br>Margaret Sahhar AM<br>Katherine Sampson and<br>Michael Jaboor<br>Guy Sansom and<br>Treena Quarin<br>Susan Santoro<br>Kaylene Savas ◆<br>Graeme Seabrook<br>Marshall Segan and<br>Ylana Perlov<br>Prof Barry Sheehan and<br>Pamela Waller<br>Diane Silk<br>Dr John Sime<br>A Simon<br>Jane Simon and Peter Cox<br>Reg and Elaine Smith OAM -<br>Earimil Gardens Charity<br>Tim and Angela Smith | Annette Smorgon ◆<br>Diana and Brian Snape AM<br>Geoff and Judy Steinicke<br>Dr Ross and Helen Stillwell<br>Dr Mark Suss ■<br>James and Anne Syme<br>Rodney and Aviva Taft<br>Suzanne Thompson<br>Frank Tisher OAM and<br>Dr Miriam Tisher<br>Susie Waite ●<br>Kevin and<br>Elizabeth Walsh ■<br>Anthony Watson and<br>Tracey McDonald<br>Pinky Watson<br>Marion Webster◆<br>Penelope and Joshua<br>White<br>Ursula Whiteside<br>Ann and Alan Wilkinson<br>Mandy and<br>Edward Yencken<br>Greg Young<br>Ange and Pete Zangmeister<br>Anonymous (35) |
|--|---|--|---|

**LEGACY CIRCLE**

Acknowledging supporters who have made the visionary gesture of including a gift to MTC in their will.

- |   |  |  |  |
|---|--|--|--|
| Mark and Tamara Boldiston<br>Bernadette Broberg<br>Adam and Donna Cusack-<br>Muller | Peter and Betty Game<br>Fiona Griffiths<br>Linda Herd<br>Irene Kearsay | Dr Andrew McAliee and<br>Dr Richard Simmie<br>Peter Philpott and<br>Robert Ratcliffe | Max Schultz<br>Jillian Smith<br>Diane Tweeddale<br>Anonymous (9) |
|---|--|--|--|

**LEGACY GIFTS**

Remembering and honouring those who have generously supported MTC through a bequest.

- |   |   |   |   |
|---|---|---|---|
| The Estate of Leta-Rae<br>Arthy<br>The Christine Brown<br>Bequest<br>The Estate of Ron<br>Chapman | The Estate of Gordan<br>J Compton<br>The Estate of Betty Ilic<br>The Estate of Bettie<br>Kornhauser | The Kitty and Leslie Sandy<br>Bequest<br>The Estate of James Hollis<br>Minson | The Estate of Prudence<br>Ann Tutton<br>The Estate of Freda<br>E White<br>The Estate of Dorothy<br>Wood |
|---|---|---|---|

Acknowledging Donors who join together to support innovative and inspiring programs for the benefit of our community.

- |                                 |                                      |                                     |                              |
|---------------------------------|--------------------------------------|-------------------------------------|------------------------------|
| ▲ ARTISTIC DIRECTOR'S<br>CIRCLE | ■ YOUTH AMBASSADORS<br>GIVING CIRCLE | ◆ WOMEN IN THEATRE<br>GIVING CIRCLE | ● EDUCATION<br>GIVING CIRCLE |
|---------------------------------|--------------------------------------|-------------------------------------|------------------------------|



To find out more about supporting MTC please call 03 8688 0938 or visit [mtc.com.au/support](http://mtc.com.au/support)

