



Supported by



THE WELL

By **Louris van de Geer**

Adapted from the book *The Well*, by Elizabeth Jolley

Directed by Sarah Goodes

An adaptation of a beloved novel, brought to life in a staged reading.

Join **Heidi Arena, Paul English, Nadine Garner** and **Tamala Shelton** for a special night of theatrical storytelling in this new MTC NEXT STAGE commission by acclaimed Melbourne playwright **Louris van de Geer**. An adaptation of Elizabeth Jolley's award-winning Australian classic, it is being presented as a unique, sonically driven live reading to welcome the first audiences back inside Southbank Theatre after nearly a year offstage.

On a whim, middle-aged Hester brings the orphaned, adolescent Katherine into her home – it's the start of a powerful friendship for both women. But when a sudden tragedy interrupts their seemingly idyllic outback life, it threatens to twist their unshakable bond to breaking point. A haunting thriller in the best traditions of Australian Gothic, *The Well* is a taut work of gnawing suspense as these two women navigate the emotional and psychological terrains of desire, memory and social isolation.

Directed by **Sarah Goodes** (*Home, I'm Darling*), this bespoke staged reading will feature an aural design by sound artist **Camilla Hannan** to explore the acoustic potential of theatre and to prioritise a sonic relationship with the audience. *The Well* is an exclusive opportunity to witness cast and creatives working together to bring a beloved novel to life.

FRIDAY 29 JANUARY, 7.30PM
SATURDAY 30 JANUARY, 2PM & 7.30PM

Southbank Theatre, The Sumner

Duration Approximately 90 minutes, without an interval

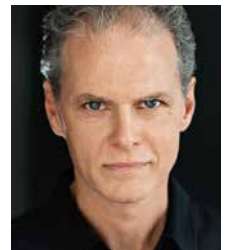
This production contains adult themes and some coarse language

mtc.com.au

CAST & CREATIVES



Mrs Borden
Heidi Arena



Mr Bird
Paul English



Hester Harper
Nadine Garner



Katherine
Tamala Shelton



Director
Sarah Goodes



Sound Designer
Camilla Hannan



Playwright
Louris van de Geer

MTC is a department of the University of Melbourne



NEXTSTAGE

Made possible by MTC's Playwrights Giving Circle

MTC MELBOURNE
THEATRE
COMPANY