

A woman with voluminous, curly blonde hair is shown from the chest up, wearing a white, draped, low-cut dress. She is looking back over her right shoulder towards the camera with a subtle, enigmatic expression. Her right hand is raised, resting against her neck and shoulder. The lighting is dramatic, highlighting her features and the texture of her hair and dress against a dark, almost black background.

**MELBOURNE  
THEATRE COMPANY**

**A STREETCAR  
NAMED DESIRE**

**BY TENNESSEE WILLIAMS**  
**DIRECTED BY ANNE-LOUISE SARKS**

**RELAXED PERFORMANCE**  
**VISUAL STORY**



# Wominjeka / Welcome

Welcome to this Melbourne Theatre Company production at Arts Centre Melbourne.

Melbourne Theatre Company acknowledges the recognised traditional owners of the land on which Arts Centre Melbourne stands, the Wurundjeri Woi Wurrung people.

Melbourne Theatre Company also acknowledges the Boon Wurrung people, their deep and long-standing connections to the land and waterways we create on, and their generosity in working with us.

We pay our respects to all First Nations people, their Elders past and present, and their enduring connections to Country, knowledge and stories. As a Company we remain committed to the invitation of the Uluru Statement from the Heart and its call for voice, truth and treaty.

# Relaxed Performance

The relaxed performance of *A Streetcar Named Desire* will take place on Wednesday 14 August at 2pm.

Relaxed Performances focus on relaxing or adapting the theatre environment while maintaining the creative integrity of the show. Relaxed Performances are for anyone who would benefit from a more relaxed environment.

## During a Relaxed Performance:

- We may make minor changes to sensory elements of a show such as reducing bright lighting or loud noises.
- There is a relaxed attitude to noise and movement.
- You are welcome to bring in, and use, stimulating devices.
- The theatre doors remain open and the house lights remain on, but dimmed, throughout the performance.
- You can leave the venue at any time and a designated quiet space is available in the foyer.

## **Visual Story**

Visual Stories are designed to help prepare you for your visit. They include information about the venue and what will happen during the performance. Visual Stories are suitable for people who wish to be familiar with what to expect prior to attending. Please note that the information includes 'spoilers' which may impact on your experience of the production.

This Visual Story has been prepared by Melbourne Theatre Company in consultation with the Arts Centre Melbourne Access & Inclusion team.

## **Contact**

If you would like more information in the lead up to your visit, please contact Melbourne Theatre Company on **03 8688 0900** during business hours or email **[info@mtc.com.au](mailto:info@mtc.com.au)**

# The production

***A Streetcar Named Desire* is a dramatic story about a woman called Blanche DuBois, who goes to visit her sister, Stella. Stella's husband Stanley doesn't trust Blanche and Blanche doesn't like Stanley. This tension between the two characters causes a lot of conflict in the story.**

## Venue

This production of *A Streetcar Named Desire* will be performed at the Playhouse, which is inside Arts Centre Melbourne. The Playhouse is wheelchair accessible.

## Length

*A Streetcar Named Desire* runs for approximately 2 hours and 50 minutes, including a 20-minute interval.

## Age recommendation

*A Streetcar Named Desire* is recommended for ages 15+.

## Theatre guidelines

- Face masks are strongly recommended indoors.
- Photography is not permitted during the performance. Mobile devices (e.g. iPads) are permitted to be used to assist with communication and it's always fine to use a device in the foyer or quiet spaces.
- At the end of the show, we ask you to join us in a Deaf clap, by waving your hands in the air, as some audience members find clapping hands together uncomfortable.

## Photography

- Photographs of Arts Centre Melbourne by Jason Lau, Andy Drewitt, Mark Gambino and Kate Disher-Quill.
- Photographs of *A Streetcar Named Desire* by Pia Johnson. Set and costume design by Mel Page. Lighting design by Niklas Pajanti.

# Content warnings

Contains theatrical haze effects, coarse language, mature themes, references to suicide and depictions of domestic abuse and sexual violence.

If this production raises concerns for you or anyone you know, support is available:

- **1800RESPECT**  
1800 737 732
- **Men's Referral Service**  
1300 766 4901
- **Lifeline**  
131 114
- **Beyond Blue**  
1300 224 636

LGBTIQA+ communities can contact:

- **Rainbow Door**  
1800 723 367

Aboriginal and Torres Strait Islander peoples can contact:

- **13 YARN**  
13 92 76

Please note that the original script contains language and references in dialogue written at a time in history that do not reflect acceptable language used today. Some of these references are listed below in the content warnings.

## **Contains coarse and / or derogatory language**

- There are numerous references to Stanley, who is of Polish heritage, as a 'Polack'.
- Blanche sings an old song referring to a 'captive maid'.
- Blanche has a memory in which she refers to a 'coloured girl' who it is intimated was a former servant/slave at the family plantation.
- Stanley refers to a character of Spanish heritage as a 'greaseball'.



## **Depictions of violence and domestic abuse**

- Stanley is frequently violent and abusive to Blanche and Stella. He breaks several items in the house including a radio and several plates. He is physically and verbally abusive to Stella at several points, grabbing her roughly and yelling at her. At one point in the play Stanley hits Stella. This action is partially obstructed from view. This action was rehearsed for safety with the support of an intimacy coordinator and fight director. After Stanley hits Stella and she runs away, he yells for her and she returns to him and they make up.
- A moment of domestic violence occurs between Eunice and Steve. This is

a moment of verbal abuse and physical abuse. The physical abuse occurs offstage and is conveyed by a sound effect but there are references to past instances of physical violence.

- There are several moments in which Stanley, Mitch or one of the other poker players start to fight or need to be physically restrained. These moments have been rehearsed for actor safety with a fight director.
- Blanche physically struggles with the Nurse of a mental health facility who arrives at the house to remove her.
- In a moment of self-defence, Blanche threatens Stanley with a broken bottle. This bottle is a stage prop.

## **Depictions of rape and attempted rape**

- Mitch is rough with Blanche and it is implied that he is thinking of raping her but he leaves.
- Stanley is aggressive with Blanche and wants to have sex with her. Blanche does not consent and uses a broken bottle to try to keep Stanley away from her. With Blanche on the bed, holding the broken bottle, Stanley slowly approaches her. He is imposing and Blanche is scared and he throws the bottle away. A lighting blackout occurs so you will not see any violence, but it is implied that Stanley sexually assaults Blanche.
- These moments were rehearsed for safety with the support of an intimacy coordinator.

## **Mature themes**

### **Depictions of drug and alcohol use**

- Many characters drink whiskey and other liquor frequently. The whiskey is made from water and food colouring; no alcohol is consumed by actors.
- Stanley is often drunk during the play as are his friends, especially when playing poker. This contributes to a violent escalation of events at several points.

### **Sexual references**

- At several points in the play characters make references to sex or sexual activity. These references are often indirect using substituted words to imply sexual activity.

- Blanche flirts with and kisses a young man – the Young Collector – who comes to the apartment.

### **References to child abuse**

- Blanche was fired from her job as a teacher after having an inappropriate, illegal relationship with a student. At one point she says she has to ‘be good and keep (her) hands off children’.
- Stanley refers to Blanche’s inappropriate, illegal relationship as getting ‘mixed up with’ the student.

### **References to death and dying**

- There are consistent references to death and dying. Characters refer to family members and former partners who have died or are in the process of dying.

- There is one instance of more detailed description of the last moments and burials of Blanche’s family members.

- Blanche fantasises about dying from eating an unwashed grape while at sea and what will happen to her body.

### **References to suicide**

- Blanche describes her relationship with her former husband who took his own life. The implication is that he did this because he was discovered in bed with a man. The manner of suicide is described.
- At several moments, Blanche hears the music that was playing when her former husband died by suicide and so does the audience.

## **Partial nudity**

- On three occasions, Stanley is seen shirtless. He remains dressed in pants during these moments.

## **Homophobic references**

- Blanche blames herself for her former husband's suicide as, after finding him in bed with a man, she told him that he 'disgusted her'.
- Stella refers to Blanche's former husband as a 'degenerate'.

## **Depictions of mental illness**

- Blanche is removed in the final moments of the play by a doctor and a nurse and taken to a facility. Initially they use force but in the end she is compliant and leaves with them.

# Sensory warnings

We may make minor changes to sensory elements of this show, such as reducing bright lights or loud noises. Please be aware of the following:

- There is one musical moment in the show with an electric guitar and amplified singing. This lasts for about 1 minute. If the music gets too loud during the performance, you can cover your ears with your hands or put on some headphones.
- Some sudden noises may occur, including a cat screeching sound effect and sudden loud yelling by many characters.
- This show contains smoke, haze, lit candles and lit theatrical cigarettes that are not real.
- The two-storey set will rotate throughout the performance. It revolves quite close to the front of the stage but it is very safe.

# Venue information

*A Streetcar Named Desire* is being performed at Arts Centre Melbourne. The building has a spire on the top.



# Entering the building

You might go into the building through the car park on Kavanagh Street or Southbank Boulevard, or through the doors at the St Kilda Road entrance.

There are construction works to the Theatres building at Arts Centre Melbourne. If you're travelling by car, please be aware that construction in Southbank may cause delays.





When you get to the building you will see other people who are also going to see shows. Some of them might be seeing *A Streetcar Named Desire* like you.

You will also see people wearing black uniforms. They are called ushers. They can help you with directions or answer any questions you may have about the performance.



# Find your way

There are three theatres inside Arts Centre Melbourne. This performance is in the Playhouse Theatre.

You might need to walk down some stairs or use the elevator to get to the Playhouse. The friendly ushers will help you find your way.

The place might be quite busy when you arrive, so you might wish to allow yourself extra time or wear headphones if it's noisy.

Before going inside the Playhouse Theatre, you may like to use the bathroom. Accessible toilets are available on all levels, so please feel free to ask for directions.



# Seating

The doors to the theatre will open about 20 minutes before the start of the show. You can go into the theatre and find a seat early if you want to.

Before you go into the theatre, you will need to show your ticket to the usher. Your ticket will let you know what door you should enter the theatre through.

Today's performance has a small audience to make everyone a bit more comfortable. If you would feel more comfortable, you can have space between groups.

There will be an announcement pre-show to let you know when you can move to an empty seat.



# During the show

The play will go for about 2 hours and 50 minutes in total. There will be a 20-minute interval after about 1 hour and 35 minutes. If you need to take a break during the show you can leave your seat and come out to the foyer area. You can do this whenever you need to.

Today's performance will begin with an on stage announcement. Some actors will come on stage and introduce themselves and the story. They will tell you when you can move to an empty seat.



There will be a quiet space that has comfortable beanbags and soft lighting where you can relax if you want to. You can return to the theatre and watch the rest of the show whenever you feel ready. You can follow the signage or ask an usher to help you find the quiet space.

During the interval some audience members might go to the foyer to buy refreshments from the bar or use the facilities.



# After the show

To say thank you to the artists for their work, we ask you to join us at the end of the show in a Deaf clap. This means using an Auslan sign for clapping by waving your hands in the air.



# The show

*A Streetcar Named Desire* is set in the late 1940s, in New Orleans, in the United States. It's a dramatic story about a woman called Blanche DuBois, who goes to visit her sister, Stella. The story is told from Blanche's point of view. Blanche struggles with painful memories of past traumatic events. Living with Stella and her husband Stanley brings more challenges for Blanche. American playwright Tennessee Williams wrote *A Streetcar Named Desire* in 1947. It is widely considered a classic play.

The story is set in domestic spaces with sets and costumes that appear realistic for the 1940s. There are also moments that are more poetic to remind the audience they are watching a modern piece of theatre.

For example, there is one musical moment with an electric guitar and amplified singing. There is another moment where black petals fall from the ceiling above the stage.

Other moments of theatricality are used to represent Blanche's feelings. For example, when death is discussed the audience may see the Flower Seller on stage as a poetic symbol of death. Also, when Blanche talks about her former husband, Allan, the audience may see a man in the upstairs windows – he is a reminder of the guilt Blanche feels over Allan's death.

# The set

We spend most of the play in Stella and Stanley Kowalski's bottom-floor apartment of a two-storey building. Their neighbours Steve and Eunice Hubbell live upstairs. Steve and Eunice are the owners of the apartment complex.

The apartment building is in the French Quarter, a suburb of the city New Orleans, which is in the state of Louisiana in the United States.

The two-storey apartment building set will rotate throughout the performance to reveal different views into both the downstairs apartment and the upstairs apartment.





# The characters

There are 13 different characters in *A Streetcar Named Desire*, played by 10 actors. Two actors play multiple characters, so you will notice they wear different costumes and change their voice and movement.

As the play is set in Louisiana in a multicultural city, all the characters have different accents. Many characters have variations of a Southern American accent which is an accent from the Southern states of the United States.



## Blanche

This is Blanche, an English teacher in her 30s from Laurel, Mississippi. Blanche grew up with her younger sister, Stella, in a wealthy, big home on a large estate called Belle Reve. Blanche relies on alcohol to cope with her complex internal feelings and traumatic memories.

Blanche is played by actor Nikki Shiels.

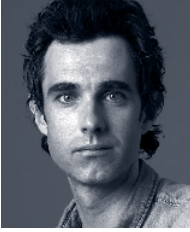


## Stella

This is Stella. She is Blanche's younger sister and is about twenty-five years old. She is married to Stanley and lives in the French Quarter of New Orleans. Although Stella grew up with her older sister, Blanche, in a wealthy home, she now lives in more humble conditions. Stella is pregnant and the actor wears a costume with a fake pregnancy belly.

Stella is played by actor Michelle Lim Davidson.





## Stanley

This is Stanley. Sometimes other characters refer to him as Stan. He has Polish ancestry and has a working-class background. He fought in World War II, where he met his friend Mitch, and is now an auto-parts salesman. Stanley is often verbally and physically aggressive towards other characters, especially Stella and Blanche.

Stanley is played by actor Mark Leonard Winter.



## Mitch

This is Mitch. His full name is Harold Mitchell. We hear him referred to as Mr Mitchell only once. He is Stanley's friend and coworker and he lives with his unwell mother. Mitch met Stanley when they were both in the army during World War II. Mitch is a love interest for Blanche.

Mitch is played by actor Steve Mouzakis.





## **Eunice**

This is Eunice. She is Stella's friend, upstairs neighbour and landlady. Eunice is married to Steve. Similar to Stella and Stanley, Eunice and Steve have a tumultuous relationship with fighting that is out of sight of the audience.

Eunice is played by actor Katherine Tonkin.



## **Steve**

This is Steve. He is Eunice's husband and Stanley's poker buddy. He lives with his wife, Eunice, above Stella and Stanley. Steve is often aggressive and abusive towards his wife, Eunice.

Steve is played by actor Gareth Yuen.





## **Pablo**

This is Pablo. He is another friend of Stanley who we often see playing poker. He is Hispanic and sometimes speaks Spanish. Pablo represents the culturally diverse neighbourhood of New Orleans in the 1940s.

The actor who plays Pablo also appears briefly in one other scene playing Blanche's former husband Allan's love interest.

Pablo is played by actor Stephen Lopez.



## **Flower Seller**

This is the Flower Seller. The Flower Seller makes her living from selling flowers in the local area, usually by going door to door and calling out the item for sale. We first see the Flower Seller in moments where Blanche discusses her dead husband and bad memories. The Flower Seller appears in the upstairs apartment but the other characters don't notice her.

The Flower Seller is played by actor Veronica Peña Negrette.





## **Young Collector**

This is the Young Collector. The Young Collector is a young man who comes to Stella and Stanley's door to collect money for the newspaper. He arrives when Blanche is home alone and only has dialogue in this scene.

The Young Collector is played by actor Kaya Byrne.

## **Doctor**

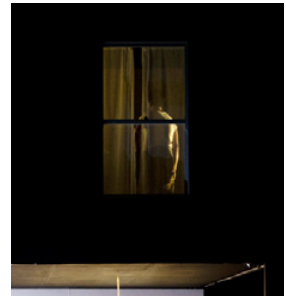
This is the Doctor. The Doctor appears at the end of the play to take Blanche to a mental health facility.

The Doctor is played by actor Kaya Byrne, the same actor who plays Young Collector.

## **Allan**

This is Allan, Blanche's dead husband. He appears only in the upstairs apartment when Blanche talks about her husband. He is like a ghost haunting Blanche.

Allan is played by actor Kaya Byrne, the same actor who plays the Young Collector and the Doctor.





## **Gee Gee**

This is Gee Gee, a local woman. She observes Blanche's arrival at the beginning of the play and can be seen in other moments as a local neighbour looking in on the troubles in the apartment building.

Gee Gee is played by actor Gabriella Barbagallo.

## **Nurse**

This is the Nurse. The Nurse appears in the final scene of the play, along with the Doctor, to take Blanche away.

The nurse is played by actor Gabriella Barbagallo, the same actor who plays Gee Gee.



# The story

## SCENE 1

The black curtain rises as Blanche arrives outside Stella and Stanley's apartment. Stanley, Stella and Mitch don't notice her as they leave to go bowling.

Eunice and Gee Gee talk to Blanche.

Music plays as the set revolves and Eunice lets Blanche into the apartment. You can see the Flower Seller in the upstairs apartment but Eunice and Blanche don't notice her.

Blanche asks to be left alone. Music plays softly in the background.





The music stops as Stella arrives home. Blanche is very happy to see her sister. Blanche is not impressed with Stella's small home because they grew up in a large, wealthy home.

Blanche reveals she's on leave from her teaching job due to stress.

Blanche delivers the news that their family home, Belle Reve, has been sold to settle debts. This leaves them with no inheritance. Stella is upset and goes to the bathroom.



Music starts to softly play as Stanley, Mitch and Steve enter the stage. Blanche does not notice them.

Steve goes to his upstairs apartment, where Eunice is upset that he is late for dinner. Steve makes a verbal threat of physical violence as they exit out of view. The music stops.

Blanche meets Stanley for the first time; they are very different from each other. Blanche comes from a world of refined manners, whereas Stanley is casual and brash. Stanley says he's hot and takes off his shirt. He is shirtless for the rest of the scene.

Blanche asks if she can stay temporarily with Stella and Stanley.



A cat screeching noise scares Blanche. She's startled again by Stanley imitating the sound and his shouting out to Stella in the bathroom.

Blanche shares information about her past, including the death of her young husband, Allan. You may see a man in the upstairs window but other characters do not notice him – he is a ghostly

reminder of Allan. Blanche feels unwell and goes to the bathroom.

As the scene ends music plays and lights go out on the apartment, leaving the upstairs light on – Allan is more obvious now.



## SCENE 2

Lights come up, the music stops and it's the next evening. Stella tells Stanley that they no longer have the family home which would give them access to inheritance. They also discuss Stella's pregnancy and Stella wants to keep it hidden from Blanche.

Stanley is angry to hear that they won't get money from the family home and wants to see proof – he thinks Blanche might be lying. Stanley raises his voice as he gets more frustrated.



While Blanche is in the bathroom, Stanley goes through Blanche's belongings. He gets more angry as he sees signs of wealth. Stella wants him to stop and wait outside with her so Blanche can get dressed. Stanley doesn't like being told what to do. Stella leaves.

Blanche comes out from the bathroom in an undergarment and robe. She closes the curtain, takes off her robe and puts on her dress. Stanley catches a glimpse through the curtain. Blanche asks Stanley for help to do up her dress buttons.



Blanche and Stanley continue to talk as Blanche sits on the kitchen table. Stanley approaches her slowly until he's standing over Blanche, their bodies nearly touching. Blanche gets up quickly and Stanley suddenly yells at her in frustration and Stella enters. Blanche asks Stella to leave and she does.

Blanche and Stanley now talk more frankly about how Belle Reve is no longer part of the sisters' inheritance.

Stanley takes some private letters from Blanche's suitcase, upsetting Blanche; they are old poems her former husband wrote. Blanche tries to get them back by reaching around Stanley's body at his hands, but Stanley is too strong. He eventually gives them back.



Stanley tells Blanche that Stella is pregnant. Blanche steps off the set, talking to herself about the baby. Music starts to play and the set starts to revolve behind Blanche. Eunice and Steve are in the upstairs apartment but other characters don't notice them.

Stella enters and Blanche tells her what happened with Stanley. They leave for their girls' night out as the set finishes revolving to show the apartment again with Stanley's poker party.



## SCENE 3

It is late in the night and Stanley, Steve, Mitch and Pablo, are playing poker. At the same time, we see Eunice in her upstairs apartment, alone, through the curtain. Mitch goes to the bathroom.

Blanche and Stella arrive home. Stanley isn't happy that they are back, especially when Stella asks Stanley to finish the game. Stanley suddenly hits Stella on her bottom, shocking Stella. The other men laugh but Stella doesn't like this moment of aggression.





Mitch comes out of the bathroom and meets Blanche before returning to the poker game. Blanche takes off her dress showing her undergarment for a moment, then she puts on her robe. She can be seen through the curtain by the men in the apartment.

Stella goes to the bathroom and Blanche turns on the radio. The tension in the room rises as Stanley tells her to turn off the radio but she won't. He turns it off for her.

Mitch and Blanche talk and Blanche enjoys his attention. The set slowly revolves anti-clockwise to place the apartment on an angle.



Over the next few minutes a fight takes place. It may be upsetting for some people to watch.

Stella comes out of the bathroom and Blanche turns the radio back on. As Blanche and Mitch begin to dance to the radio's music the set revolves back to centre, and Stanley rushes to pick up the radio. He then throws it out the door. Stella yells at Stanley, calling him a drunk animal.

Stanley charges at Stella and pulls her by her hair, out of

the kitchen and onto the porch. Stanley slaps Stella several times but this contact cannot be seen by the audience. Eunice is in the upstairs window but the other characters don't notice her. Dramatic music plays in the background.

The other men stop Stanley and force him inside. There is a lot of yelling. Stanley fights back and tries to hit Pablo. This scene is very safe, the actors do not get hurt. The set slowly revolves clockwise.



Blanche takes Stella up to Eunice's apartment to hide. The men put Stanley into the shower to cool down and then Mitch, Steve and Pablo leave.

Stanley tries to contact Stella by phoning Eunice's apartment. He slams the phone down and yells loudly towards Stella upstairs.

The set stops revolving as Stanley lies on the ground begging for Stella's forgiveness. Stella comes down the stairwell, crying. They hug and kiss and go back inside their apartment.



Blanche looks for Stella but is startled when Mitch enters. Mitch reassures her that Stella and Stanley will be fine – it's implied that fighting and violence often occurs in their relationship.

Blanche thanks Mitch for being kind. As she steps off the set, music plays as the set revolves to show the apartment.

Stanley is in the bathroom in his underwear but Blanche doesn't see him. He walks out the bathroom, looks at Stella lying on the bed, and leaves the apartment.



## SCENE 4

The next morning, Blanche and Stella talk about Stanley's violence. Stella says she is fine and she makes excuses for Stanley's behaviour.

Blanche suggests that if she can get some money, she can help Stella leave Stanley. But Blanche's plan to get money relies on a past boyfriend.

Stanley arrives and listens to their conversation from outside the apartment; Stella and Blanche don't notice him. Blanche describes Stanley as common and like an animal.



Stanley enters the apartment and Blanche goes into the bathroom. He greets Stella, pretending he hasn't heard Blanche's criticisms.

Blanche comes out of the bathroom and Stella hugs Stanley.

The lighting on the lower apartment suddenly blacks out and music plays. Then we see Eunice and Steve through the upstairs window.



## SCENE 5

Blanche and Stella are in the apartment and they hear a loud fight. Eunice and Steve are yelling in the upstairs window.

Eunice comes to Stella and Stanley's apartment and tells them to call the police before she exits.

Stanley arrives home. He changes his shirt and is shirtless for a moment. While Stella is in the bathroom, Stanley tells Blanche that he found out that Blanche used to live at The Hotel Flamingo. This is not what Blanche told them when she arrived.



Steve and Eunice enter and walk past the apartment window to go upstairs and out of sight. They are both in a good mood – Eunice has forgiven Steve.

As Stella comes out of the bathroom, Stanley leaves the apartment.

Blanche asks Stella if Stanley has been spreading rumours about her.

As Stella pours Blanche a drink, it spills over and Blanche lets out a high-pitched cry.

Stanley appears and shouts out to Steve, Eunice and Stella. Stella and Stanley are going on a double-date with Eunice and Steve. Steve and Eunice appear through the apartment door and all four leave.





As Blanche gets ready for her date with Mitch, she drinks more and music begins to play softly.

The Young Collector enters and Blanche flirts with him, asking for a kiss. She kisses him and asks him to leave.

Blanche says she should keep her hands off children because the Young Collector is a young man, but he is not underage.



The music gets louder and Blanche gets ready for her date. She takes off her robe briefly showing her undergarment, before putting on a dress.

Mitch walks across the stage but the characters don't notice each other yet.

Mitch enters the apartment to collect Blanche for their date.

As they leave the apartment, the set starts to rotate and contemporary music begins to play. Gee Gee sits in the upstairs apartment, singing and playing an electric guitar. The set continues to rotate and stops to reveal the front of the apartment.

Mitch and Blanche return from their date.



## SCENE 6

Mitch asks Blanche if he can kiss her but she avoids it by changing the subject. The set starts to revolve and Allan is seen in the upstairs apartment but Blanche and Mitch don't notice him.

Blanche tells Mitch about her husband Allan who she met when she was 16. Allan appears again in the upstairs window but Blanche and Mitch don't notice him.

Once inside, Blanche and Mitch have more drinks. They flirt and Mitch lifts Blanche over his shoulder in a playful way. He then tries to lift up her skirt but Blanche does not want him to do this and convinces him to stop.



Blanche explains that many years ago she found Allan having sex with a man. Another man appears at the upstairs window – it's as if we're watching Blanche's memory of Allan's infidelity. Blanche says that after she found Allan cheating on her, she told him she was disgusted with him.

Blanche thinks that this caused Allan to suicide. Blanche has had mental ill-health for many years because of this traumatic event.

Mitch and Blanche slowly kiss and embrace. Music plays as the curtain goes down for the interval.

The audience may clap as the curtain goes down.



# Interval

It is now interval.

The show will start again in 20 minutes. You may choose to go out to the foyer and buy a refreshment or use the quiet space. You can also stay in the theatre seats if you want.

After 15 minutes you may hear a bell sound and a verbal announcement over the loud speaker to remind you that interval is nearly over and to return to your seat for the second half of the performance.

## SCENE 7

Music plays as the curtain comes up. Stella is preparing the apartment for Blanche's birthday party. Stella appears more pregnant, indicating that a few months have passed.

Stanley enters and tells Stella about information he's learned about Blanche.

He says that Blanche used to live at The Hotel Flamingo and was evicted because too many men visited her room. Blanche was also fired from her teaching job because she had a sexually inappropriate relationship with a 17-year-old boy.



As they talk, Blanche can sometimes be heard singing in the background, from the bathroom. You might also see Eunice through the upstairs apartment window but the other characters don't notice her.

Stella tries to defend her sister. She tells Stanley about the grief and trauma Blanche feels since her husband's death.

Stanley says that Mitch won't be coming to the party because Stanley told Mitch about Blanche's past. Mitch doesn't want to date a woman who's had many sexual partners.



Stanley tells Stella he's bought Blanche a bus ticket back to Laurel, the city where Blanche lived. This upsets Stella a lot.

Stanley yells impatiently at Blanche through the bathroom door. Blanche comes out of the bathroom and Stanley enters it. Blanche senses that Stella is upset, but Stella does not mention the bus ticket.

Eunice opens the upstairs window to smoke, but Stella and Blanche don't notice her. Music plays to transition into the next scene.





## SCENE 8

Blanche, Stanley and Stella sit at the kitchen table. Eunice is still standing at the upstairs window.

Stella calls Stanley a pig for his poor table manners. Stanley throws a dinner plate to the ground in anger – it smashes but the actors are safe. Faint music starts to play and the set slowly revolves.

Stanley yells at Stella and Blanche, reminding them he's in charge. He throws another plate, then leaves the apartment.

Blanche tries to call Mitch on the telephone to find out why he doesn't want to see her anymore. As the set revolves we see more of Steve and Eunice upstairs. Steve is drinking. Stella joins Stanley on the porch.



Stanley tells Stella that when the baby arrives and Blanche has left their house, things will be good again. Steve and Eunice can be seen and heard laughing upstairs and Stella and Stanley notice them. Stella and Stanley go back inside.

As the set revolves, you may see Blanche in the bathroom trying to calm herself. The other characters can not see her.

Stella lights the birthday cake candles. The set continues to slowly revolve.

Stanley and Blanche argue and Stanley raises his voice. The telephone rings and Blanche thinks it might be for her, but it's for Stanley; he's been invited to go bowling.



Before Stanley leaves, he gives Blanche her birthday present – a bus ticket home to Laurel. Blanche is upset and takes her cake to the bathroom and shuts the door. Stanley enjoys seeing Blanche upset. You may notice Eunice alone in her upstairs apartment.

Stella is angry at Stanley. They grab at each other as Stella tries to stop him leaving.

Stanley blames everything on Blanche.

Stella suddenly feels unwell so she and Stanley leave for the hospital. Music plays more loudly with the set still revolving.

Mitch enters the stage and you might see Blanche alone in the bathroom with her birthday cake.



## SCENE 9

Blanche is in the bathroom as Mitch arrives at the apartment door and the set stops revolving. Both characters are drunk but the actors are pretending.

As Mitch lies on the bed Blanches tries to pour whiskey directly into his mouth but it spills and Mitch gets angry.

Mitch tells Blanche that he knows about her life in Laurel. Blanche says she had many lovers as a way of coping with her husband Allan's death but Mitch can't accept this.



Suddenly Blanche and Mitch hear an echoey voice saying the Spanish word '*flores*' (flowers in English). The Flower Seller appears at the kitchen window scaring Blanche – she's selling flowers and repeating the Spanish '*flores para los muertos*' (flowers for the dead).

The set starts to slowly revolve and music plays softly. The Flower Seller can then be seen in the upstairs apartment.



Mitch approaches Blanche at the kitchen sink. He presses his body against hers and lifts her skirt. Blanche stops him, saying they should get married but Mitch doesn't want to. She pushes him off, screaming 'fire' loudly to get Mitch to leave (there is no fire). Blanche forces Mitch out the apartment and runs up the stairwell.

Crying, Blanche walks around in the dark, is scared by the Flower Seller at the window, then enters the apartment again. The set continues to revolve into the next scene.



## SCENE 10

A few hours later, Blanche is drinking heavily and packing her suitcase.

Stanley arrives home and tells Blanche that the baby will be born in the morning. Blanche tells Stanley her good news – she’s going to join her old boyfriend Shep Huntleigh on his boat. Stanley doesn’t believe her story.

Stanley takes off his top and is shirtless.

Blanche tells Stanley how sophisticated Shep Huntleigh is. Stanley laughs and insults Blanche, then he goes to the bathroom.



Blanche tries to telephone Shep Huntleigh in Dallas. As she's on the telephone, the Flower Seller appears and walks across the stage. Blanche appears to notice her, but only for a moment, then continues talking.

The next moments in the play may be upsetting for some people.

Stanley re-enters the room in his pyjamas. Blanche tries to get past Stanley to the door, but he blocks her.

Stanley scares Blanche by making monkey noises. Blanche smashes an empty beer bottle on the sink and uses the broken bottle to try to protect herself. This is a prop and the actors are not in danger.





Blanche backs onto the bed as Stanley approaches her; she is powerless to escape. Stanley takes the broken bottle from her and throws it into the bathroom. He lifts her skirt as the lights suddenly cut to black. While the lights on the stage will be dark, the house lights will still be dim, so you will not be sitting in darkness.

The only sound you will hear will be music. It is implied that Stanley sexually assaults Blanche after this moment, but all actors are safe.



Lights come up on the apartment and Blanche is lying on the bed alone as black rose petals begin to fall onto the stage from above. The Flower Seller is in the upstairs apartment window but Blanche doesn't notice her.

After a few moments Stella enters the apartment, followed by Eunice and all of the neighbours. Blanche doesn't notice them. Music continues to play.

Blanche gets up from the bed and enters the bathroom.



## SCENE 11

Some weeks later, Stanley hosts another poker night with all the neighbours. Stella packs Blanche's suitcase and tells Eunice that Blanche is going on a holiday. Blanche is in the bathroom getting ready.

Stella knows that Stanley assaulted Blanche, but Stella doesn't want to believe it.

Blanche comes out of the bathroom and is anxious to leave but doesn't want to walk past Stanley. She waits for a moment, fantasising out loud about her future, including her death.



There's a knock on the door. Blanche is hopeful that it's her old boyfriend Shep Huntleigh, but it's the Doctor and the Nurse.

Blanche tries to get out the door but the Nurse grips Blanche around the waist and tackles her to the bed, holding Blanche down. Stella gets upset – she feels guilty about placing Blanche in a mental health facility. Music plays softly in the background.

Blanche eventually stops struggling and the Nurse lets her up. Blanche, left with no other choice, walks out of the apartment following the Doctor and Nurse. Music plays more loudly. Mitch and Eunice exit the scene, too.



Stella cries loudly as the set revolves. Stanley tries to comfort her. You may see Eunice upstairs, picking up Stella and Stanley's baby from its crib – the baby is a doll.

Mitch re-enters the kitchen, joining Steve and Pablo and they continue to play poker.

Eunice enters and hands the baby to Stella. The set continues to revolve as the music gets louder and the curtain comes down.



The actors reappear, lining up and bowing, while the audience continues to applaud or wave their hands with a Deaf clap to show their appreciation.



# MELBOURNE THEATRE COMPANY



MTC IS A DEPARTMENT OF THE  
UNIVERSITY OF MELBOURNE



MTC IS ASSISTED BY THE AUSTRALIAN GOVERNMENT THROUGH CREATIVE AUSTRALIA, ITS ARTS FUNDING AND  
ADVISORY BODY, AND BY THE STATE GOVERNMENT OF VICTORIA THROUGH CREATIVE VICTORIA.

