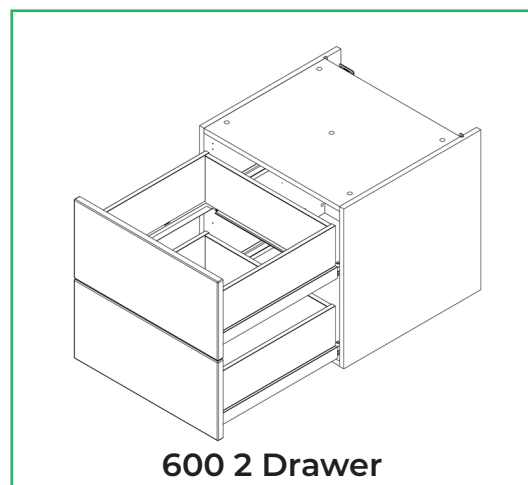
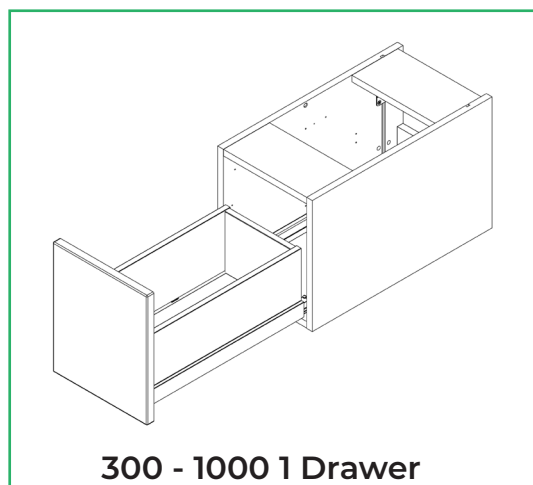


BASE UNIT

1 or 2 Drawer Base Unit (Drawer, Solid Top) Fitting Guide



Unit Parts



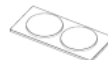
4x
15mm Screws



12x
30mm Screws



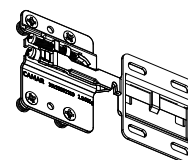
24x
Cover Caps



5x
Drawer Buffers



2x
L-Brackets



2x
Camar Antitip
Wall Plates
(RH & LH)

Tools Required



Drill



Screwdriver



Clamp



Spirit Level



Tape Measure

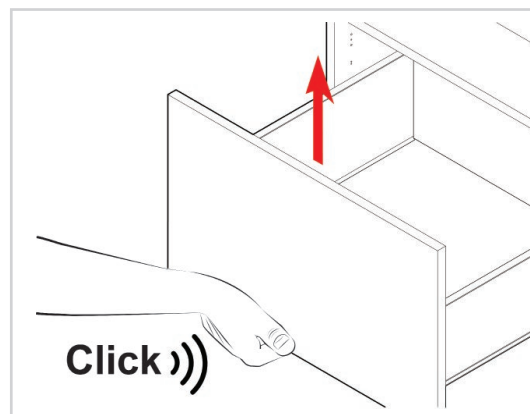
Remember to take care when unpacking. Please keep your workspace clean, clear and tidy when working. This will help keep all items safe from any damage. Any un-needed cardboard or plastic should be flattened down and placed in the bin.

A minimum of two people will be needed to lift the unit.

Removing the drawer, fixtures and fittings

Remove all fixtures and fittings from the drawer and keep on a clean and level surface and grouped by product.

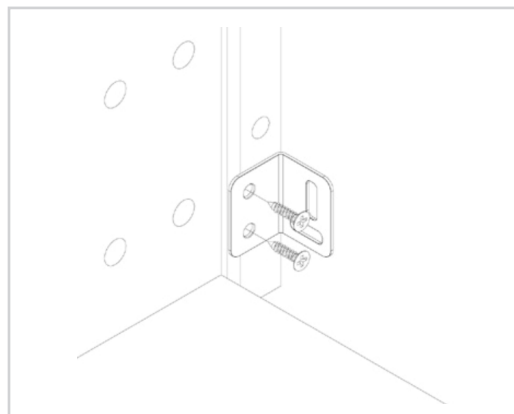
Before installing the unit, remove the drawer. This is done by pulling the drawer all the way out, and then pulling the front upwards.



Place the drawers on top of a piece of leftover cardboard to protect them from damage.

Installing the L-bracket

Secure the L-brackets internally in both bottom corners of the unit at the rear using **2x15mm** screws per bracket.

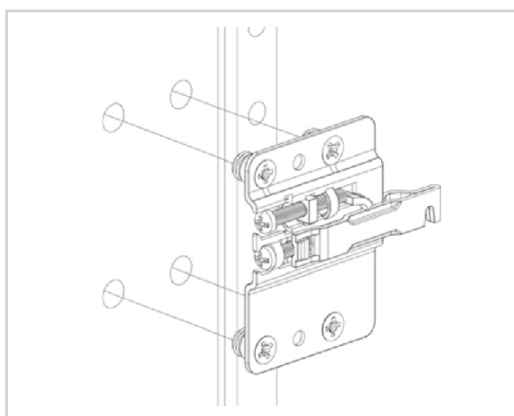


Installing the bracket

Place the unit on its side for better access for inserting and securing the hanging bracket.

Please note that the brackets are not identical. Ensure that the correct bracket is placed on the appropriate side of the unit.

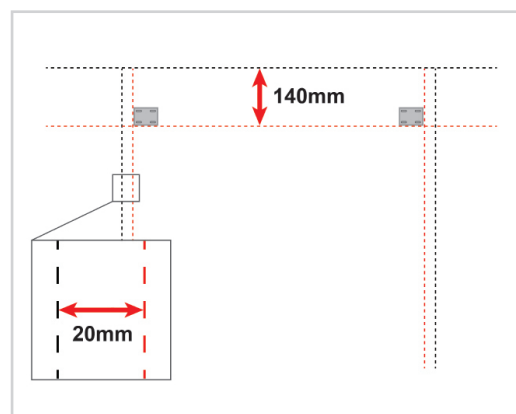
Insert the hanging bracket into the pre-drilled holes and secure using the screws provided with the bracket.



Finding the fixing point for the brackets

Draw a line on the wall **140mm** below the top line of the unit (already marked). This is where the bottom of each bracket will sit.

Draw a vertical line **20mm** inside either side of the pre marked wall unit positions. The outer edge of each bracket will sit against this line.



No screws or wall plugs are provided for attaching the unit to the wall.
This is due to variations in wall construction.

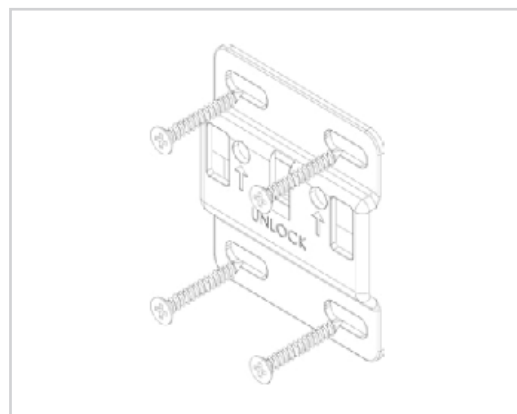
Before drilling into the wall you **MUST** check for any hidden services or pipework within the walls.

Attaching the bracket to the wall

Position the **2x** brackets as shown and mark the holes onto the wall.

Remove the bracket, then drill holes into the wall where the markings are appropriate for the screws required.

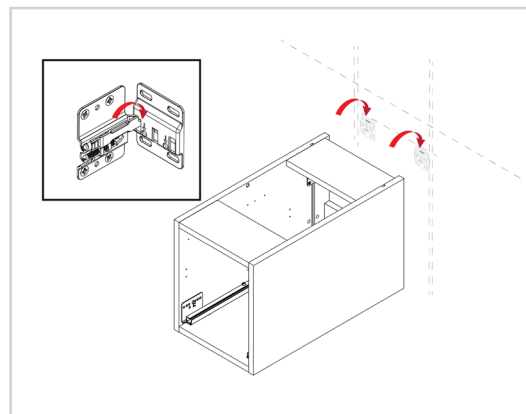
Attach the bracket onto the wall by screwing through the holes on the bracket into the holes on the wall.



Lifting the unit into place

Lift the unit against the wall slightly higher than its finished height. Insert the bracket into the brackets to hook the unit and lower the unit down, as illustrated.

Before releasing the unit, gently tug it to ensure it is securely supported by the brackets.

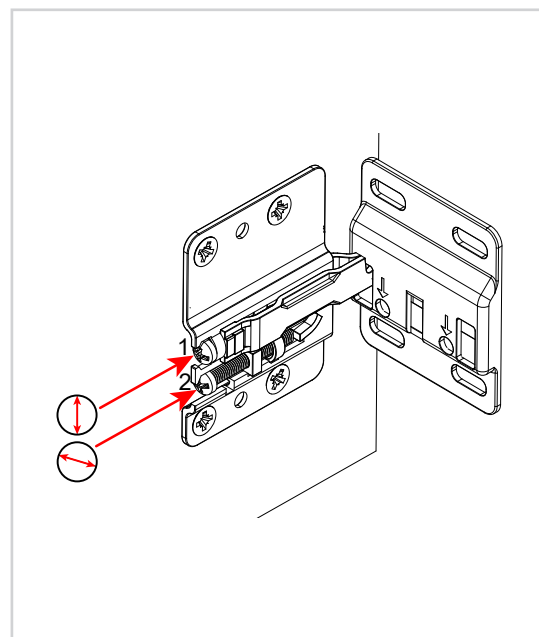


Adjusting the brackets

Using the points below, adjust the unit to suit.

Point 1 – Turn this screw to adjust the height of the unit.

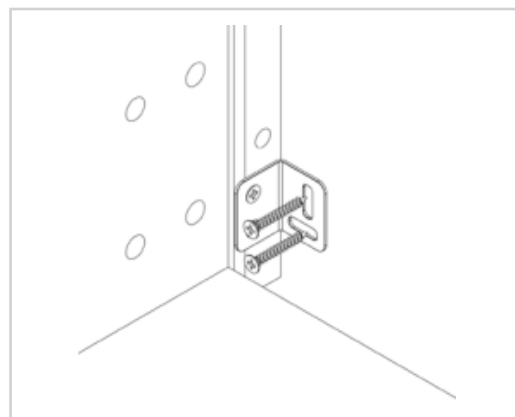
Point 2 – Turn the screw to adjust the depth of the unit.



No screws or wall plugs are provided for attaching the unit to the wall.
This is due to variations in wall construction.

Securing the unit to the wall

Secure the unit to the wall by screwing through the L-bracket into the wall.

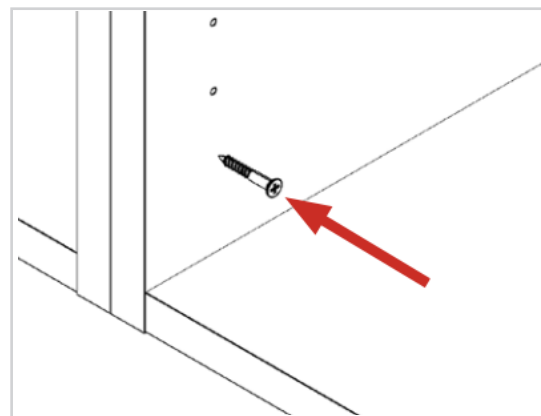


Securing to adjacent units

Clamp together the two units, checking the front edges are level and flush.

Using the screws provided, **1x30mm** screw should be fixed into each corner of the carcass side.

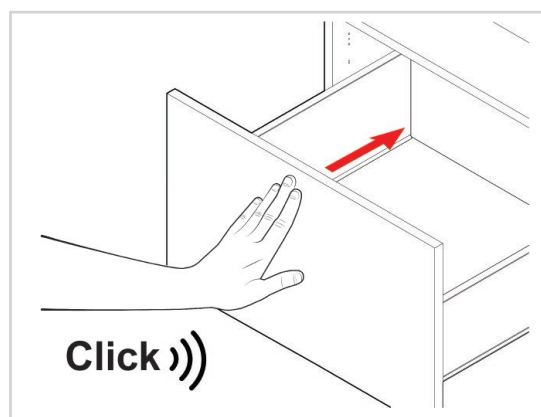
The screws can be concealed by placing them behind the shelf or behind the hinge plates. The cover caps can be used to hide any visible screw heads that remain.



Inserting the drawers

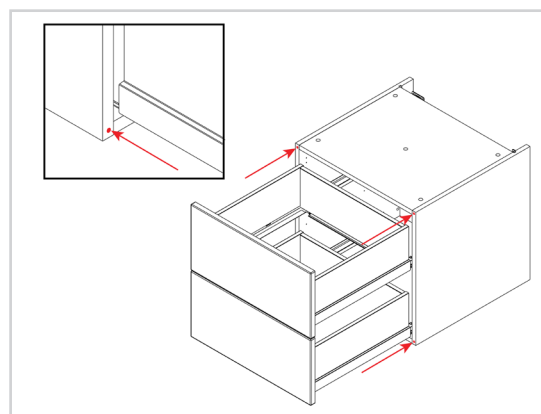
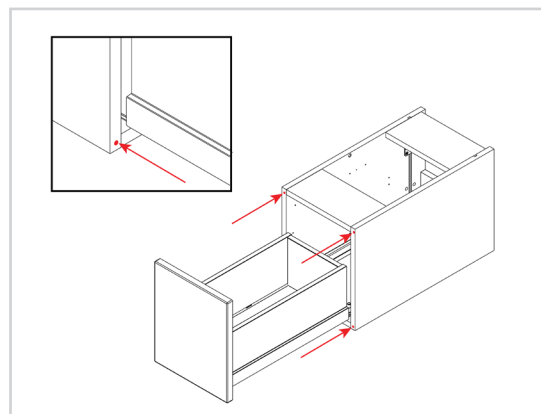
Slide the drawer onto the runner, making sure the runner mechanism and the drawer side grooves line up.

Once positioned on the runners, push the drawer back into the unit. You will hear a click when it is inserted correctly.



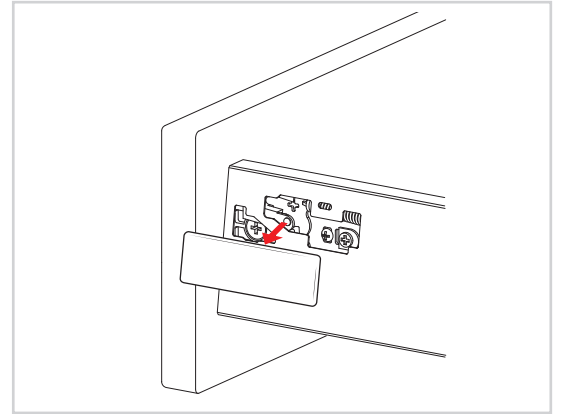
Adding the drawer buffers

Use the correct image to find the position of the drawer buffers for the unit type.



Removing the drawer cover caps (Infinity)

Place a flathead screwdriver in the small groove between the cover cap and the drawer side and carefully twist. Keep the cap in a safe place until it is needed again.



Adjusting the frontal (Infinity)

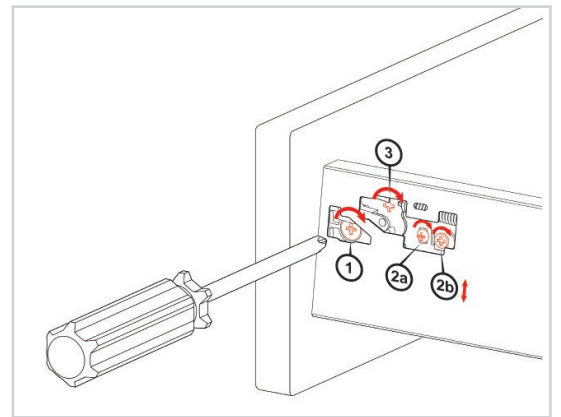
Adjust the frontal to suit, as shown in the image.

Point 1 - Will adjust the frontal left and right.

Point 2a - Will lock/unlock point 2b.

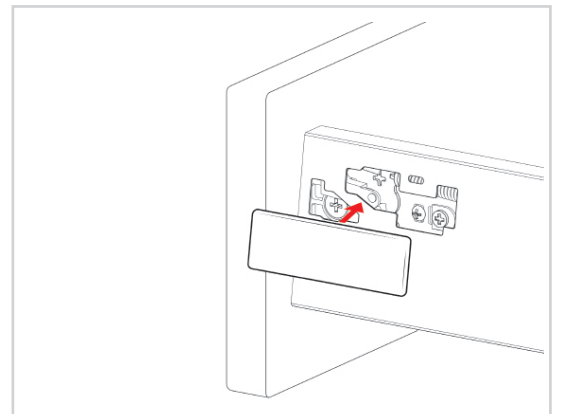
Point 2b - Will adjust the frontal up and down.

Point 3 - Will adjust the frontal releasing fixing clip. Screw while applying downward pressure to release.



Fitting the drawer cover cap (Infinity)

Position the cover cap over the mechanism, aligning the clips on the cap with the cut-out on the drawer side, and apply pressure.



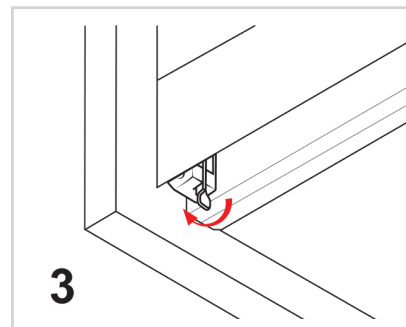
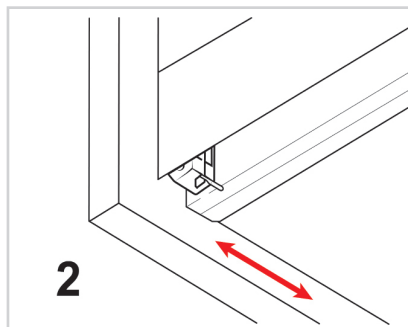
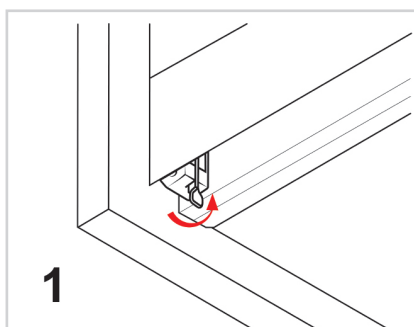
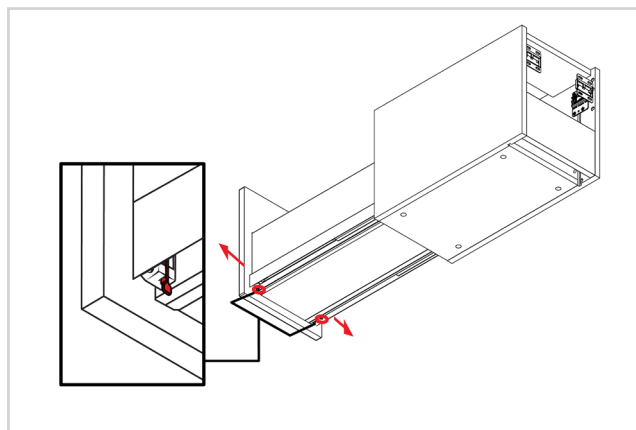
Adjusting the frontal horizontally (Infinity Plus)

Use the fixing clips, which are found under the drawer's front, to adjust the drawers.

Step 1 - Press the fixing clips half way to meet the runners on the underside of the drawer.

Step 2 - Slide the drawer to the left or right to adjust.

Step 3 - To lock the frontal in place, by releasing the fastening clips on both side of the drawer.



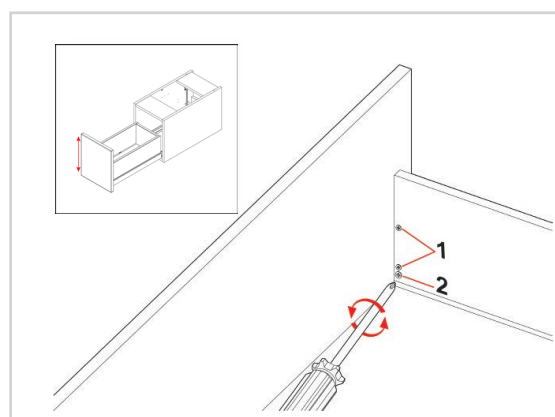
Adjusting the frontal height (Infinity Plus)

To adjust the height of the frontal, use a screwdriver as required at **points 1** and **2**.

Step 1 - Loosen both of the screws at **point 1**.

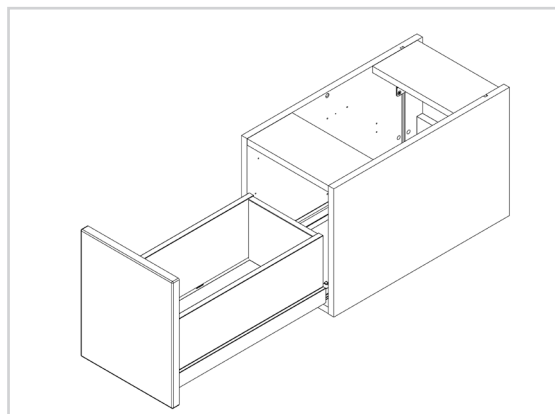
Step 2 - Turn the screw at **point 2** to adjust the frontal's height.

Step 3 - Once in the desired position re-tighten the screws at **point 1**.



Cleaning the unit

Finally, the unit should be thoroughly cleaned to remove any debris that may have accumulated during the installation.



Store the L-brackets.
These will be used later when installing the countertop (laminated or timber).