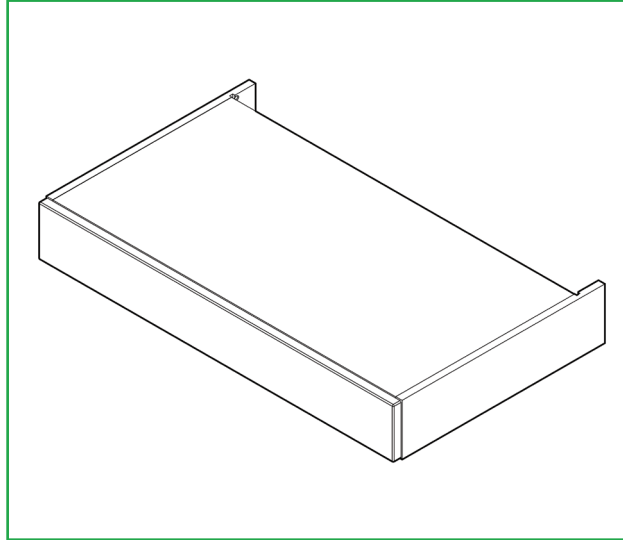
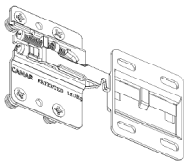


Base Unit

1 Drawer Base Unit (330 & 570 deep, 0 legs) - Fitting Guide



Unit Parts



2x
Camar Anti-tip
Wall Plate (RH & LH)



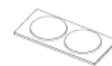
4x 15mm
screws



12x 30mm
screws



2x
L-Brackets

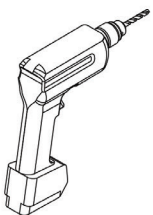


5x
Door Buffer

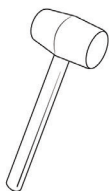


24x
Cover Caps

Tools Required



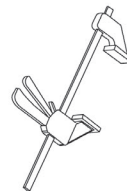
Drill



Mallet



Screwdriver



Clamp



Spirit Level



Tape Measure

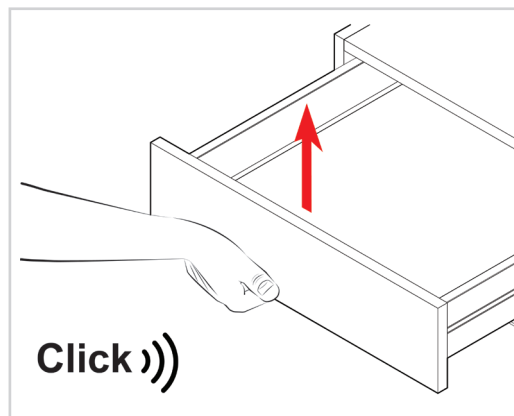
Remember to take care when unpacking. Please keep your workspace clean, clear and tidy when working. This will help keep all items safe from any damage. Any un-needed cardboard or plastic should be flattened down and placed in the bin.

A minimum of two people will be needed to lift the unit.

Removing the drawer, fixtures and fittings

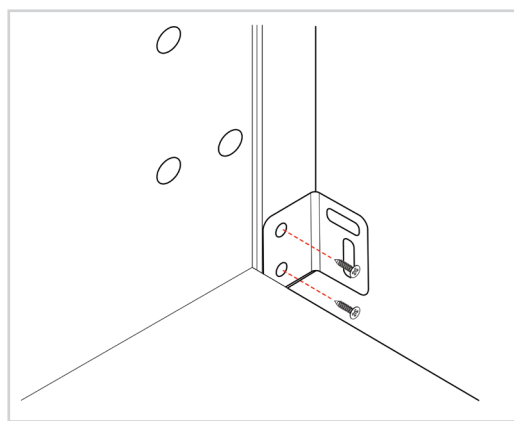
Remove all fixtures and fittings from the drawer and keep on a clean and level surface and grouped by product.

Before installing the unit, remove the drawer. This is done by pulling the drawer all the way out, and then pulling the front upwards.



Installing the L-brackets

Secure the L-brackets internally in both bottom corners of the unit at the rear using **2x15mm** screws per bracket.

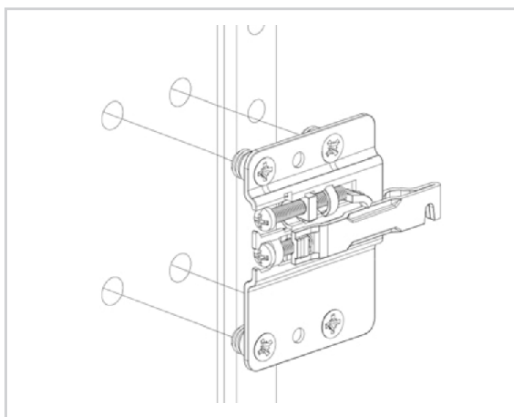


Installing the wall hanging bracket

Place the unit on its side to allow better access to insert and secure the hanging bracket.

Please note that the brackets are not identical, ensure that the correct bracket is placed on the appropriate side of the unit.

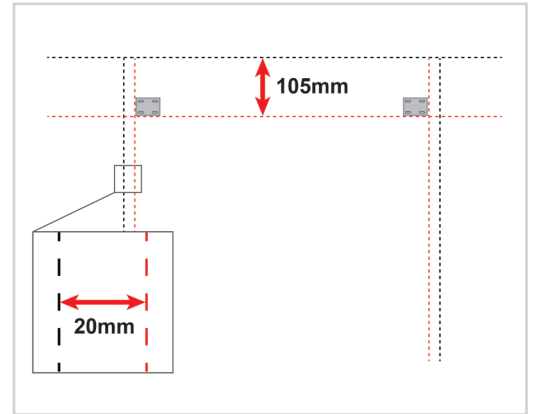
Insert the hanging bracket into the pre-drilled holes using a mallet, then secure using the screws provided with the bracket.



Finding the fixing point for the wall brackets

Draw a line on the wall **105mm** below the top line of the unit (already marked). This is where the bottom of each bracket will sit.

Draw a vertical line **20mm** inside either side of the pre marked wall unit positions. The outer edge of each bracket will sit against this line.



No screws or wall plugs are provided for attaching the unit to the wall.
This is due to variations in wall construction.

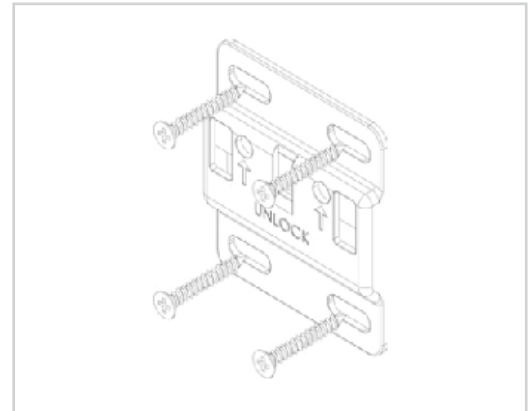
Before drilling into the wall you **MUST** check for any hidden services or pipework within the walls.

Attaching the wall hanging bracket to the wall

Position the **2x** hanging brackets as shown and mark the holes onto the wall.

Remove the hanging bracket, then drill and plug the locations of the markings using appropriate wall fixings.

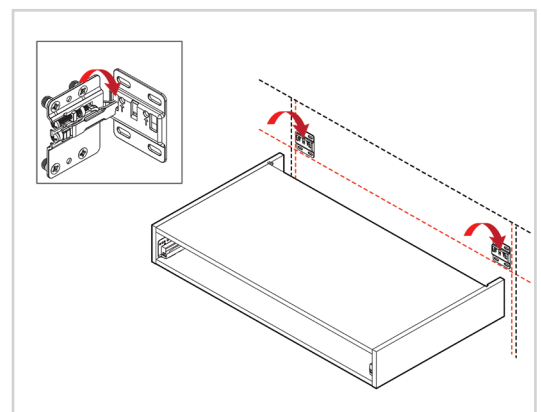
Attach the hanging bracket onto the wall by screwing through the holes on the hanging bracket.



Lifting the unit into place

Lift the unit against the wall slightly higher than its finished height. Insert the hook into the wall hanging brackets and then lower the unit down, as illustrated.

Before releasing the unit, gently tug it to check it is securely supported by the hanging brackets.

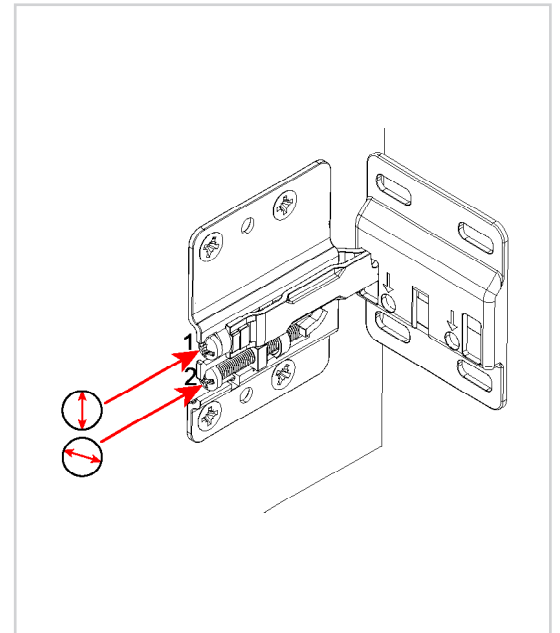


Adjusting the wall brackets

Using the points below, adjust the unit to suit.

Point 1 – Turn this screw to adjust the height of the unit.

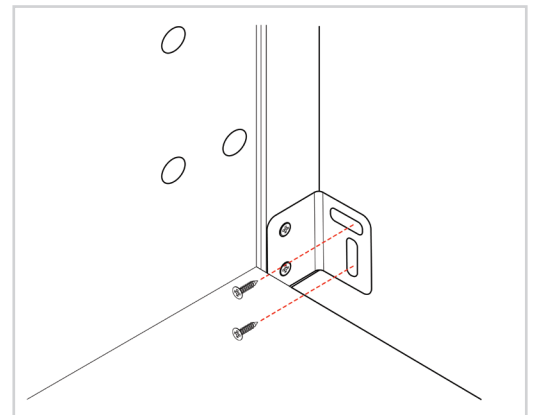
Point 2 – Turn the screw to adjust the depth of the unit.



No screws or wall plugs are provided for attaching the unit to the wall.
This is due to variations in wall construction.

Securing the unit to the wall

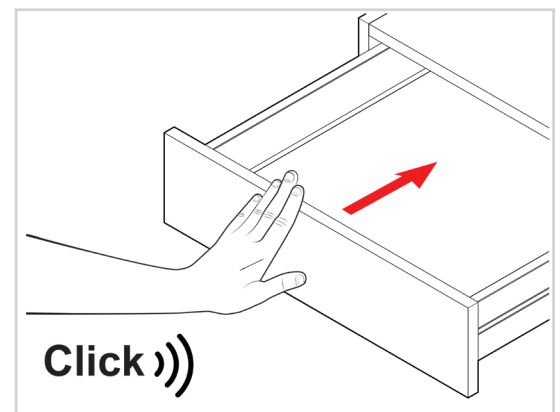
Secure the unit to the wall by screwing through the L-bracket into the wall.



Inserting the drawer

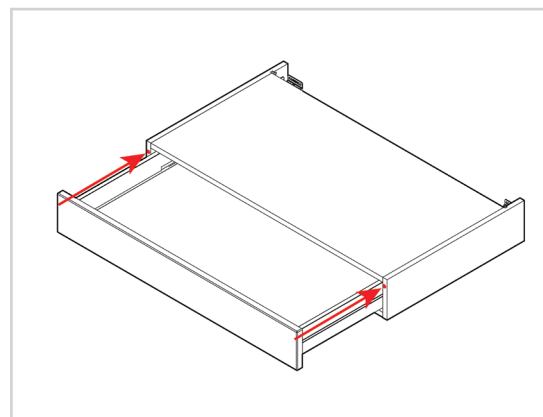
Slide the drawer onto the runners. Make sure the runner mechanism and the drawer side grooves line up.

Push the drawer back into the unit. Once it has been positioned on the runners and pushed in you should hear a click.



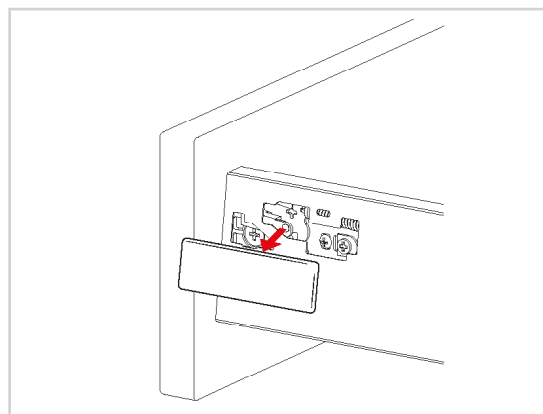
Adding the drawer buffers

Add **1x** door buffer to each side of the drawer along the unit edge, as shown in the diagram.



Removing the drawer cover caps (Infinity)

Place a flathead screwdriver in the small groove between the cover cap and the drawer side and carefully twist. Keep the cap in a safe place until it is needed again.



Adjusting the frontal (Infinity)

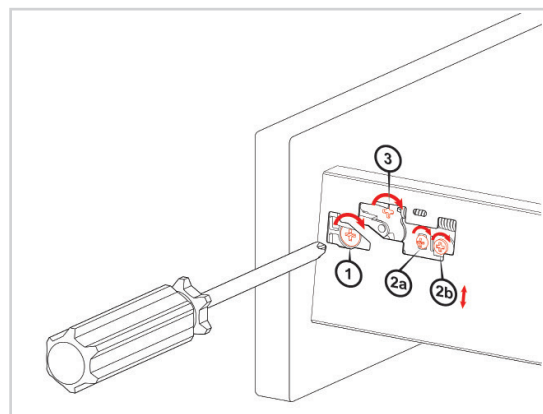
Adjust the frontal to suit, as shown in the image.

Point 1 - Will adjust the frontal left and right.

Point 2a - Will lock/unlock point 2b.

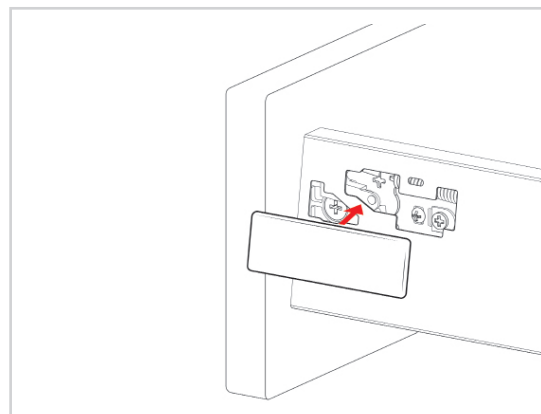
Point 2b - Will adjust the frontal up and down.

Point 3 - Will adjust the frontal releasing fixing clip. Screw while applying downward pressure to release.



Fitting the drawer cover cap (Infinty)

Position the cover cap over the mechanism, aligning the clips on the cap with the cut-out on the drawer side, and apply pressure.



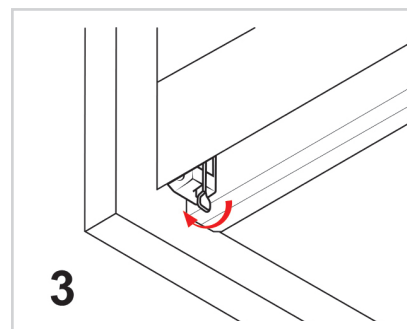
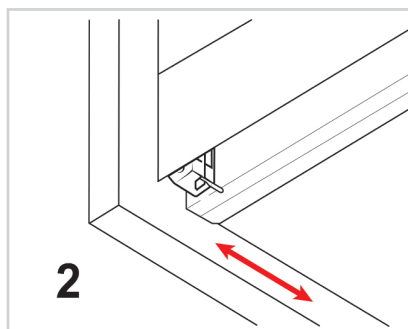
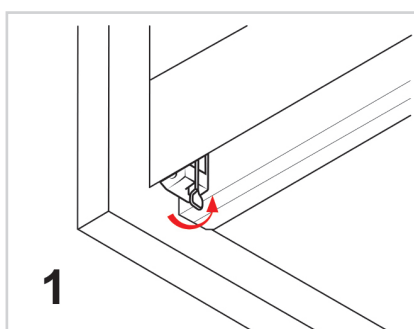
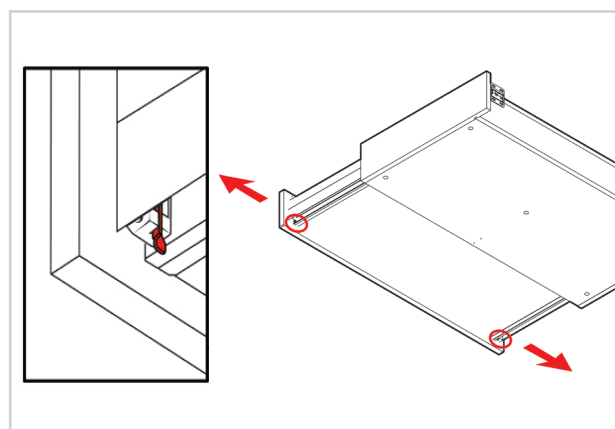
Adjusting the frontal horizontally (Infinity Plus)

Use the fixing clips, which are found under the drawer's front, to adjust the drawers.

Step 1 - Press the fixing clips half way to meet the runners on the underside of the drawer.

Step 2 - Slide the drawer to the left or right to adjust.

Step 3 - To lock the frontal in place, by releasing the fastening clips on both sides of the drawer.



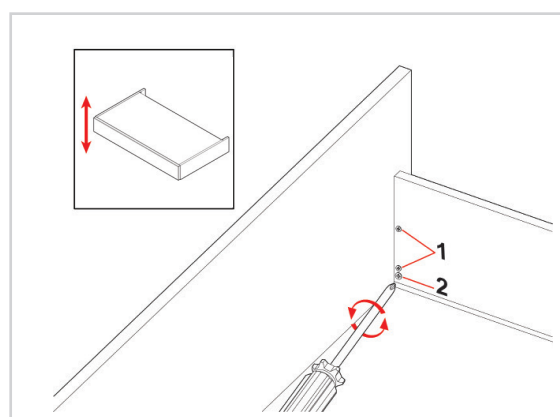
Adjusting the frontal height (Infinity Plus)

To adjust the height of the frontal, use a screwdriver as required at **points 1** and **2**.

Step 1 - Loosen both of the screws at **point 1**.

Step 2 - Turn the screw at **point 2** to adjust the frontal's height.

Step 3 - Once in the desired position re-tighten the screws at **point 1**.



Cleaning the unit

Finally, the unit should be thoroughly cleaned to remove any debris that may have accumulated during the installation.

