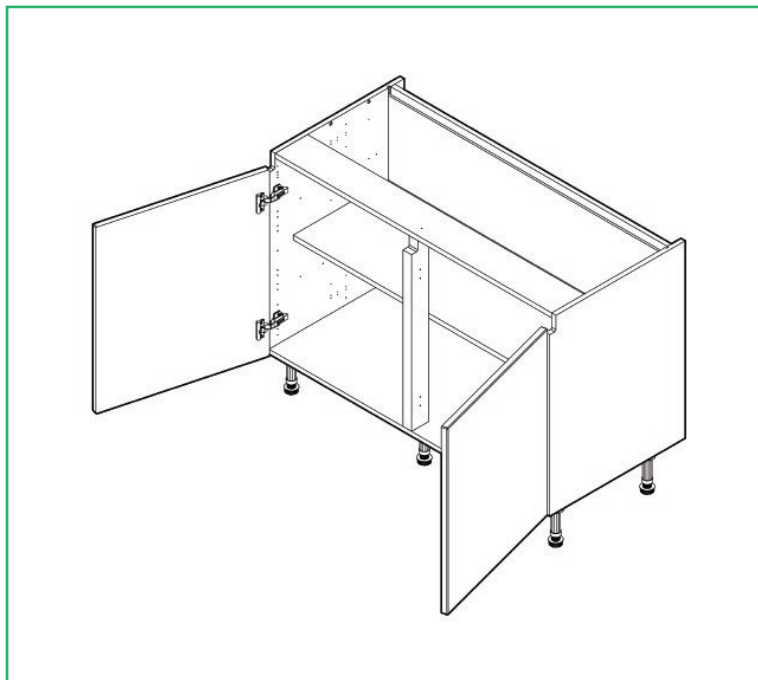


LINEA / MILANO

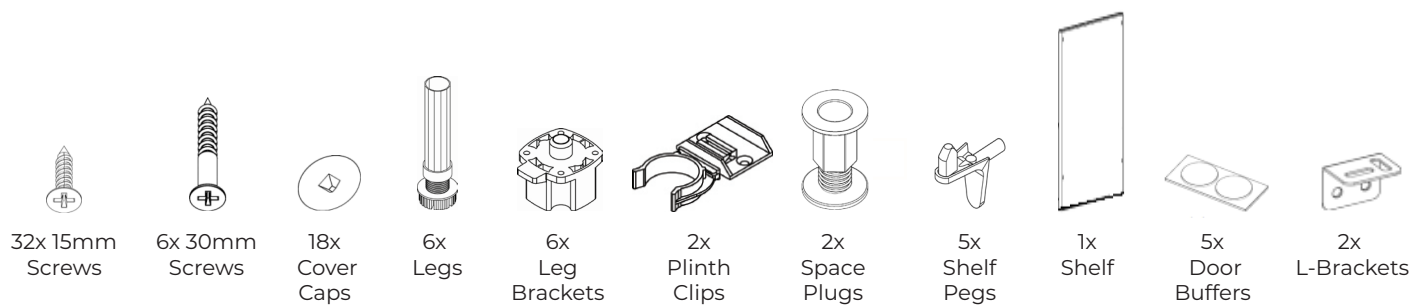
Base Unit

wren
KITCHENS

1200 Base (Door, Open Top, 6 Legs) - Fitting Guide



Unit Parts



Tools Required

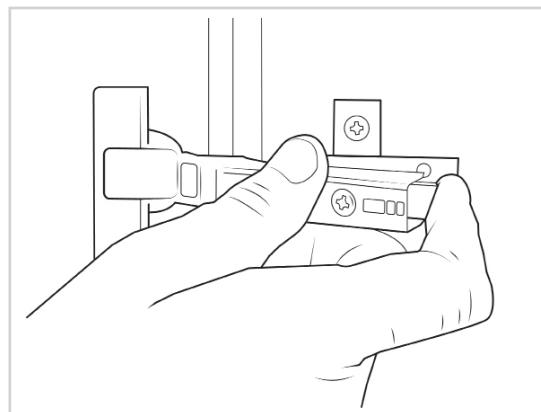


Remember to take care when unpacking. Please keep your workspace clean, clear and tidy when working. This will help keep all items safe from any damage. Any waste cardboard or plastic should be flattened down and placed in the bin.

Removing the frontals

Before installing the unit, remove the frontals by pulling the release catch.

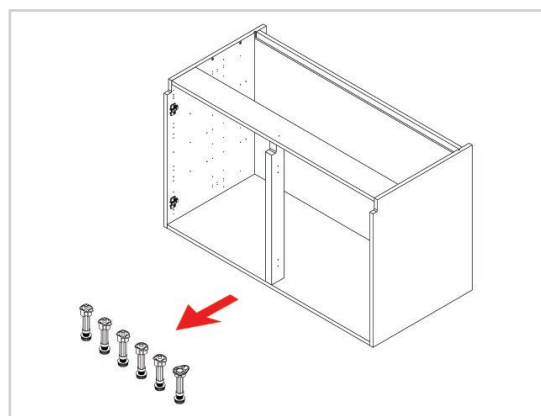
Place the frontals in the door safe along their longest lengths.



Removing the fittings

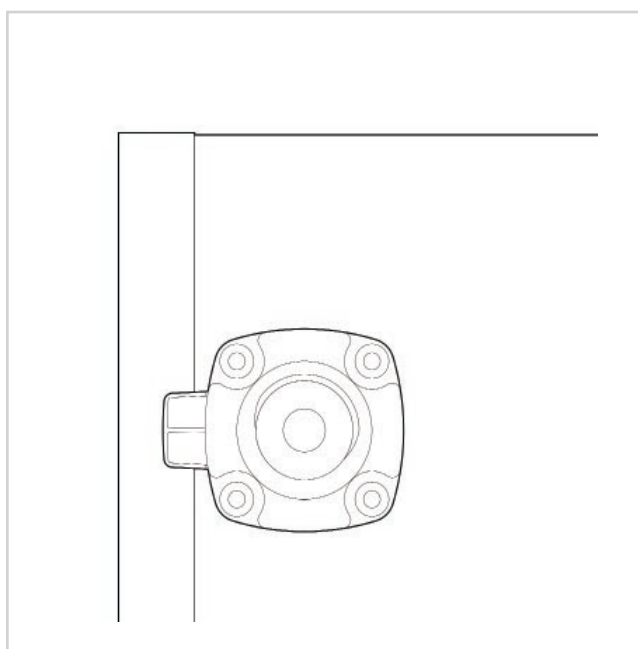
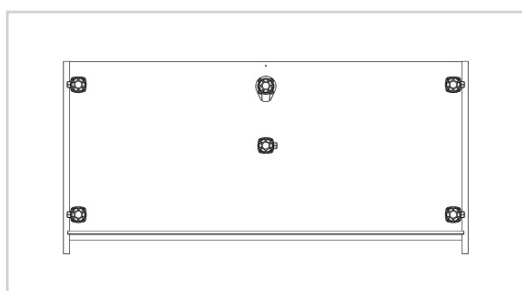
Remove all content so the unit is empty.

All fittings should be kept on a clean and level surface and the shelf placed in the door safe along its longest length.



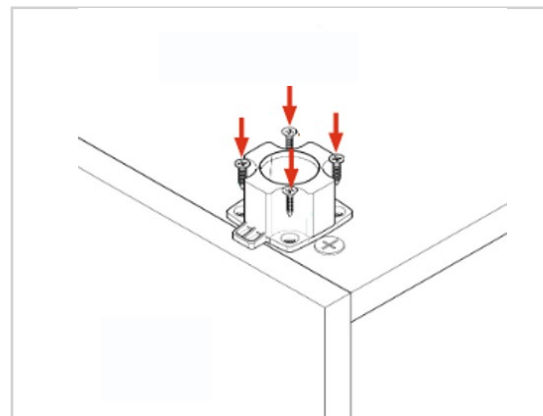
Positioning the leg brackets

Locate the leg brackets and position, as shown in the diagram. Ensure the leg brackets are rotated so the flange covers the outer edge, as this provides support for the edge of the unit.



Fixing the leg bases

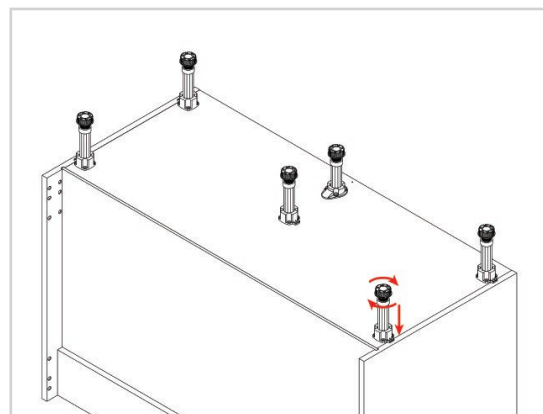
Secure each of the leg brackets into place with **4x15mm** screws per bracket.



Inserting the legs

Push each leg firmly down into the leg bracket. Adjusting each leg to **165mm**.

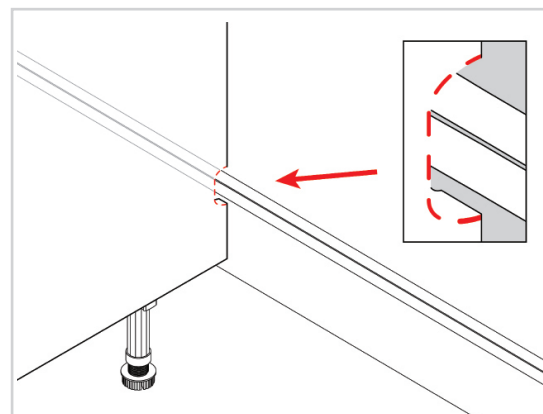
You can adjust the legs to the correct height by turning the foot of the leg clockwise or anti-clockwise.



Notching out the end panels (when required)

In order to allow for any horizontal pipework running behind the unit, some units will require the back of unit's side to be notched out.

Create a notch for the horizontal pipes at the back of the end panels using a jigsaw.



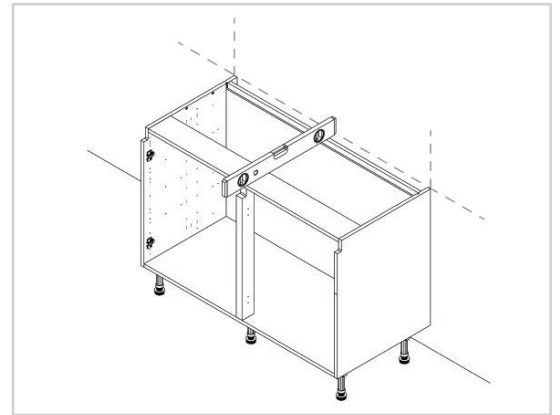
Lifting the unit into place

When lifting the unit into place do **not** tilt as this can damage the legs.

Place the unit against the wall and align it with the wall markings that will have been drawn during the room preparation stage.

Use a spirit level to ensure the unit is level from front to back, left to right, and diagonally. Adjust the legs if required.

The leg height can be adjusted by turning the foot of the leg clockwise or anti-clockwise.



**No screws or wall plugs are provided for attaching the unit to the wall.
This is due to variations in wall construction.**

Before drilling into the wall you MUST check for any hidden services or pipework within the walls.

Drilling the pilot holes

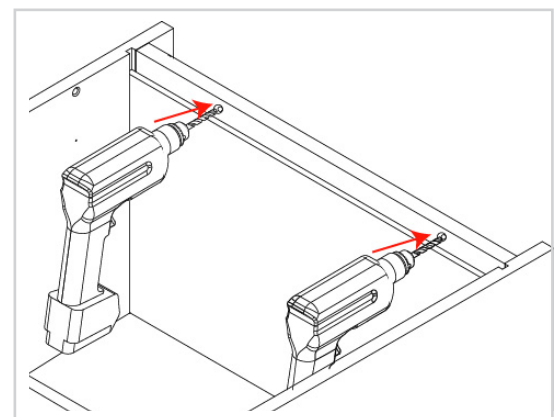
Drill pilot holes through the back panel making sure to lightly mark the wall to indicate where the wall fixings should be placed. The holes should be located as per the diagram, **1/3** in from each side and close to the top of the unit.

For guidance on the appropriate wall fixing for each wall type, please consult the “**Room Preparation Guide.**”

Once complete lift and move the unit away from the wall.

Using the pilot hole, drill a hole to suit the fixing. Place the wall fixing within the hole.

Lift and reposition the unit, ensuring it is level and in line with the wall markings.

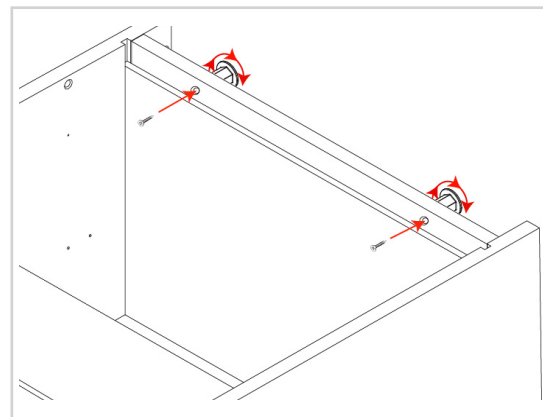


Inserting the space plugs

Position the space plugs between the wall and the back of the unit, where the holes are located.

Unwind until the space plugs touches both the back panel of the unit and the wall.

Insert the screws into the drilled holes and tighten to the wall.



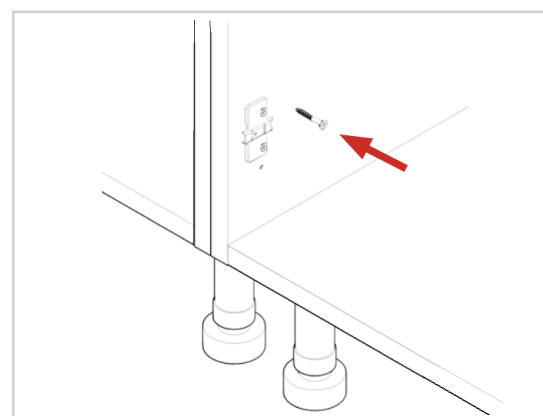
Before attaching the units together, ensure that the Milano profile cutout of both units align.

Securing to adjacent units

Clamp together the two units, checking the front edges are level and flush.

Using the screws provided, **1x30mm** screw should be fixed into each corner of the carcass side.

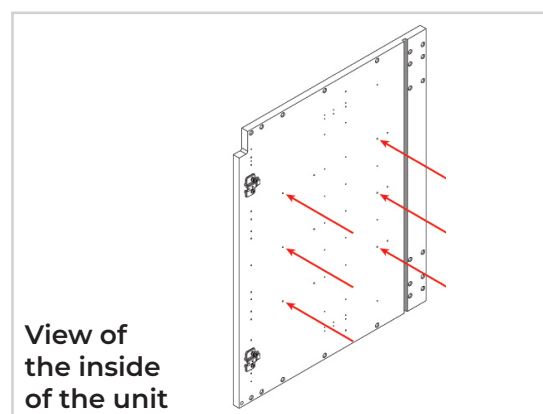
The screws can be concealed by placing them behind the shelf or behind the hinge plates. The cover caps can be used to hide any visible screw heads that remain.



Finding the shelf height

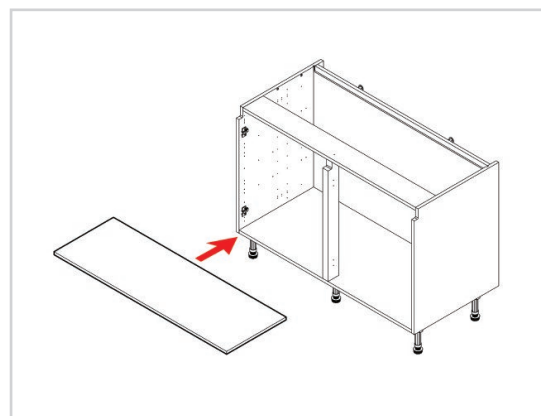
Position the shelf pegs into the pre-drilled holes. The shelf can be positioned at **3** different heights, as shown in the diagram.

Place the shelf into position so the pin of the shelf peg is inserted into the pre-drilled holes.



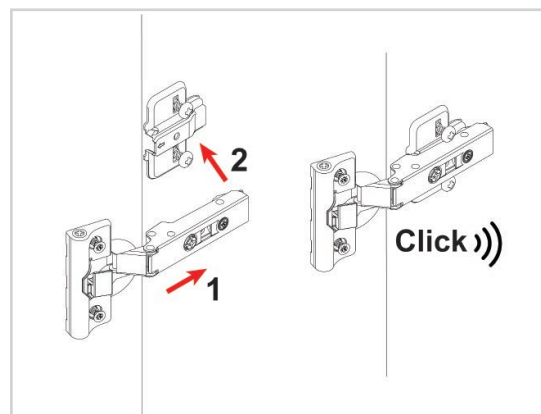
Inserting the shelf into position

The shelf touches the back panel when installed, if there is a gap between the back panel and shelf then the shelf has been installed back to front and the shelf needs to be rotated.



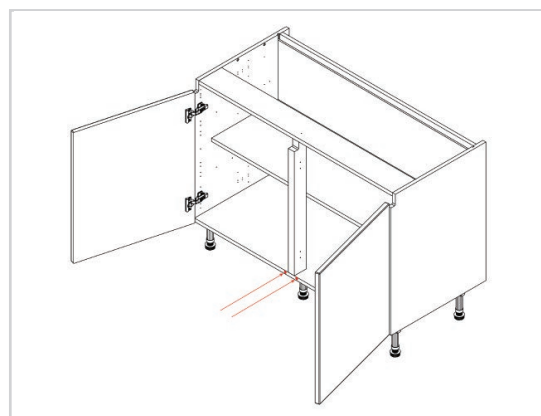
Attaching the frontals

The frontals should be re-attached to the unit by clipping the hinges onto the hinge plates. The bar of the hinge needs to be positioned into the hooks on the hinge plate. Then the rear of the hinge pushed to the hinge plate until it clicks.



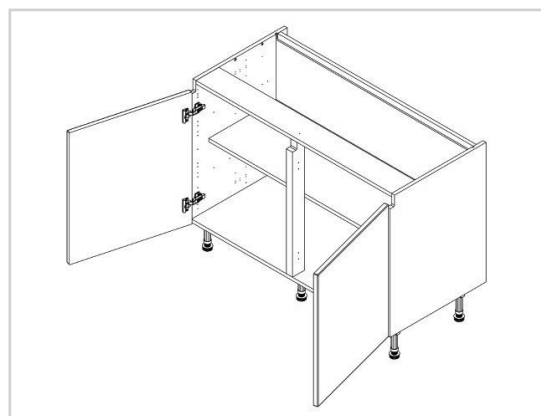
Adding the door buffers

Position **2x** door buffers at the bottom of the carcass where the frontal's corners meet the unit, as illustrated in the image.



Cleaning the unit

Finally, the unit should be thoroughly cleaned to remove any debris that may have accumulated during the installation.



Store the plinth clips and the remaining 15mm screws.
These will be used later when attaching the plinth.

Store the L-brackets.
These will be used later when installing the worktop (laminated or timber).

For door alignment please review the following installation guide:
Door - Door Frontal Hinge Adjustment