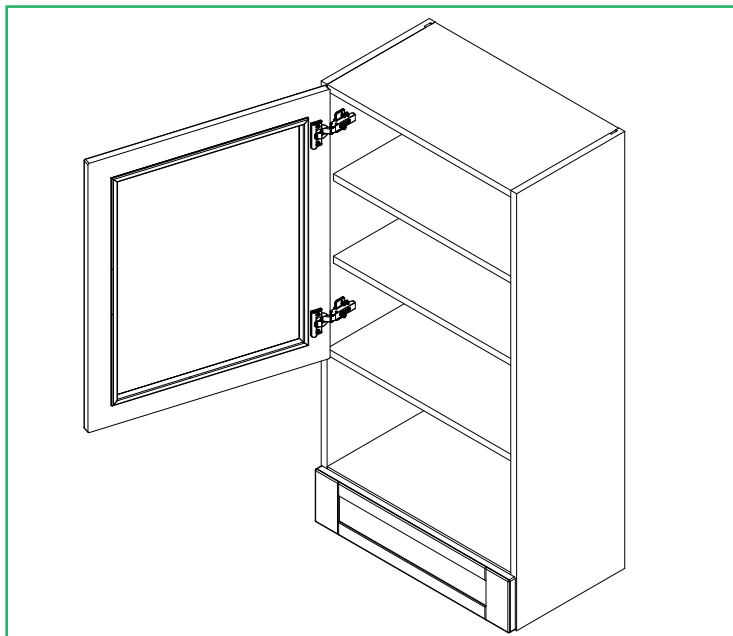


INFINITY Wall Unit

Glass Door Dresser Unit - Fitting Guide

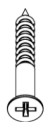
wren
KITCHENS



Unit Parts



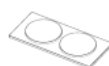
32x 15mm
screws



6x 30mm
screws



18x
Cover Caps



5x
Door Buffer



2x L-Brackets



Drawer Covers
Cap
(2 Per Draw)

Tools Required



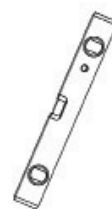
Drill



Screwdriver



Clamp



Spirit Level



Tape Measure



Before installing any wall cabinets, ensure the wall construction is strong enough to support the weight of the fully loaded unit and that appropriate fixings are used. Wall cabinets must be fully secured using all supplied hanging brackets and corner gussets, as specified in the installation guide.

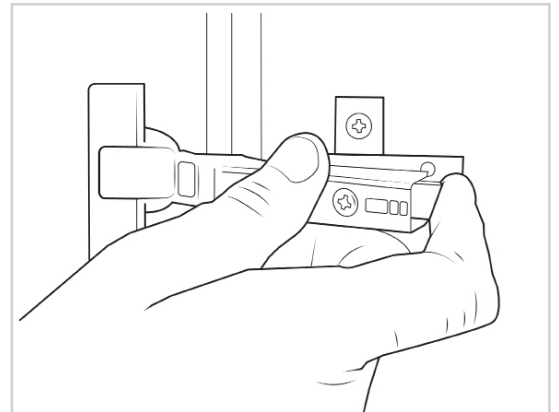
If you are unsure, seek professional advice before proceeding.

Remember to take care when unpacking. Please keep your workspace clean, clear and tidy when working. This will help keep all items safe from any damages. Any un-needed cardboard or plastic should be flattened down and placed in the bin.

A minimum of two people will be needed to lift the unit.

Removing the frontal

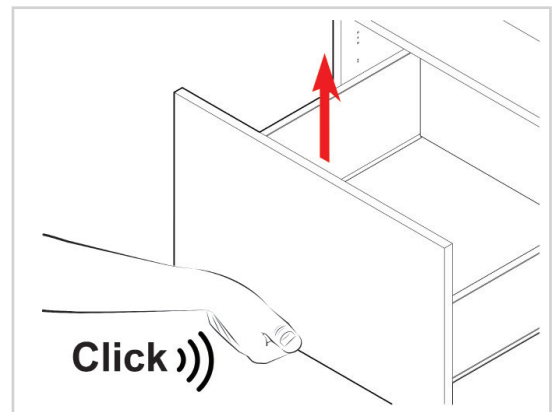
Before installing the unit, remove the frontal by pulling the release catch.



Removing the drawer, fixtures and fittings

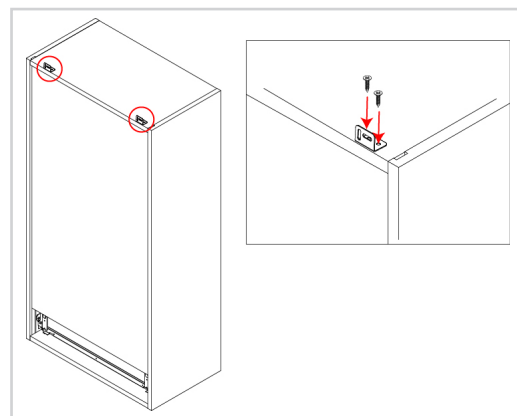
Remove all fixtures and fittings from the drawer and keep on a clean and level surface and grouped by product.

Before installing the unit, remove all drawers. This is done by pulling the drawer all the way out, and then pulling the front of the drawer upwards.



Securing the L brackets to the unit

Secure the L-brackets on top and to the rear of the unit using **2x15mm** screws at each side.



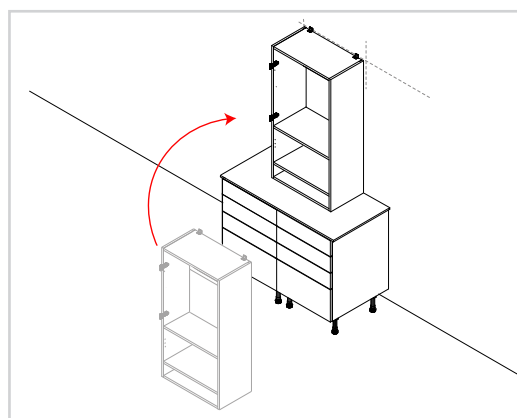
Before lifting the dresser into position, the worktop needs to be in place.

This will require a minimum of two people.

Lifting the unit into place

Lift the unit into place against the wall and align it with the wall markings that will have been drawn during the room preparation stage.

Use a spirit level to ensure the unit is level from front to back, left to right, and diagonally.

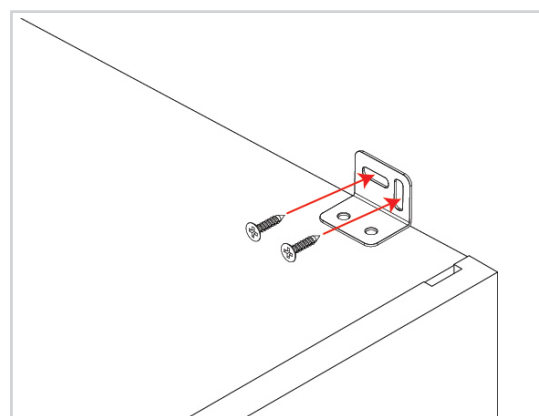


No screws or wall plugs are provided for attaching the unit to the wall. This is due to variations in wall construction.

Before drilling into the wall you **MUST** check for any hidden services or pipework within the walls.

Securing the unit to the wall

Fix the unit to the wall through the L-brackets as shown in the image (these fixings are not provided).

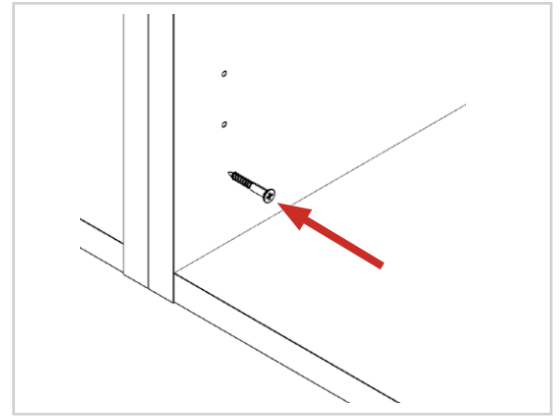


Securing to adjacent unit

Clamp together the two units, checking the front edges are level and flush.

Using the screws provided, **1x30mm** screw should be fixed into each corner of the carcass side.

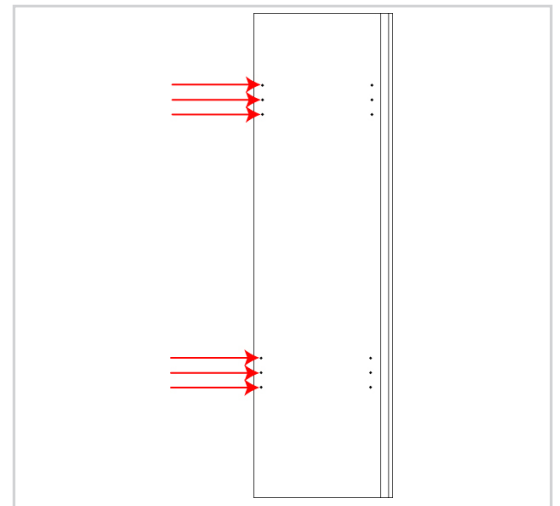
The screws can be concealed by placing them behind the shelf. The **cover caps** can be used to hide any visible screw heads that remain.



Finding the shelf height

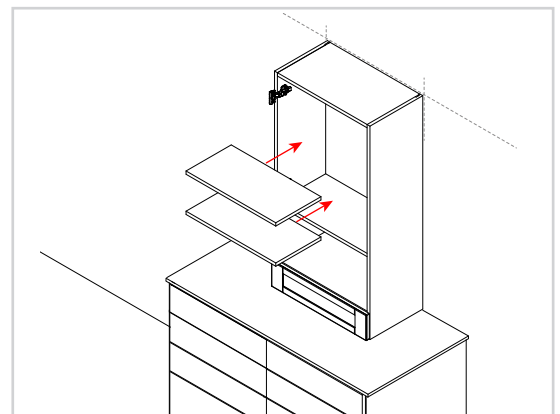
Position the **shelf pegs** into the pre-drilled holes. The shelf can be positioned at **3** different heights, as shown in the diagram.

Place the shelf into position so the pin of the **shelf peg** is inserted into the pre-drilled holes.



Inserting the shelf into position

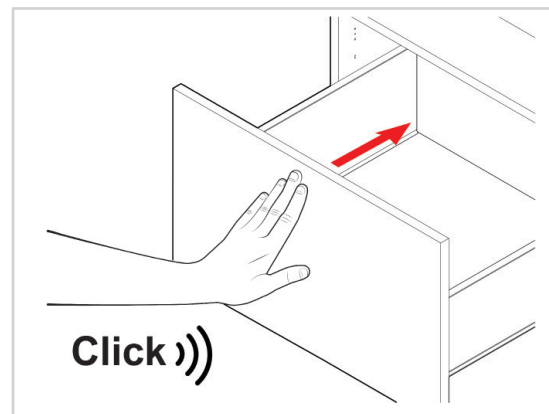
The shelf touches the back panel when installed, if there is a gap between the back panel and shelf then the shelf has been installed back to front and the shelf needs to be rotated.



Inserting the drawers

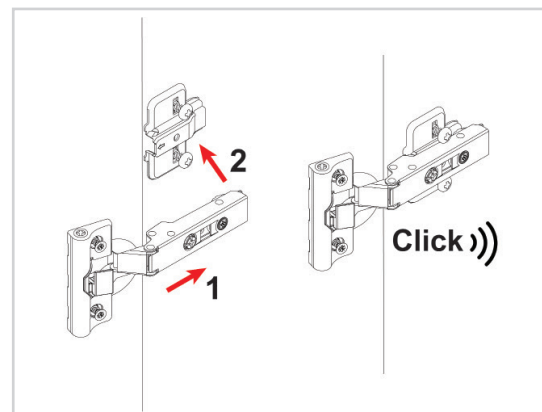
Slide the drawer onto the runners, make sure the runner mechanism and the drawer sides' groove line up.

Push the drawer back into the unit after it has been positioned on the runners; you should hear a click.



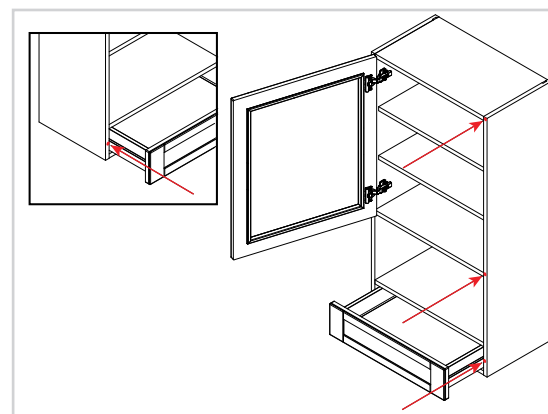
Attaching the frontal

The frontal should be re- attached to the unit by clipping the hinges onto the hinge plates. The bar of the hinge needs to be positioned into the hooks on the hinge plate. Then the rear of the hinge pushed to the hinge plate until it clicks.



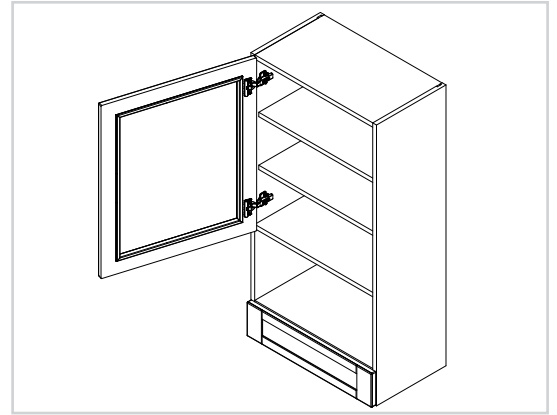
Adding the drawer buffers

Add **1x** door buffer to each side of each drawer along the carcass edge, as show in the diagram.



Cleaning the unit

Finally, the unit should be thoroughly cleaned to remove any debris that may have accumulated during the installation.



For door alignment please review the following installation guide:
Door - Door Frontal Hinge Adjustment
Drawer - Drawer Adjustment