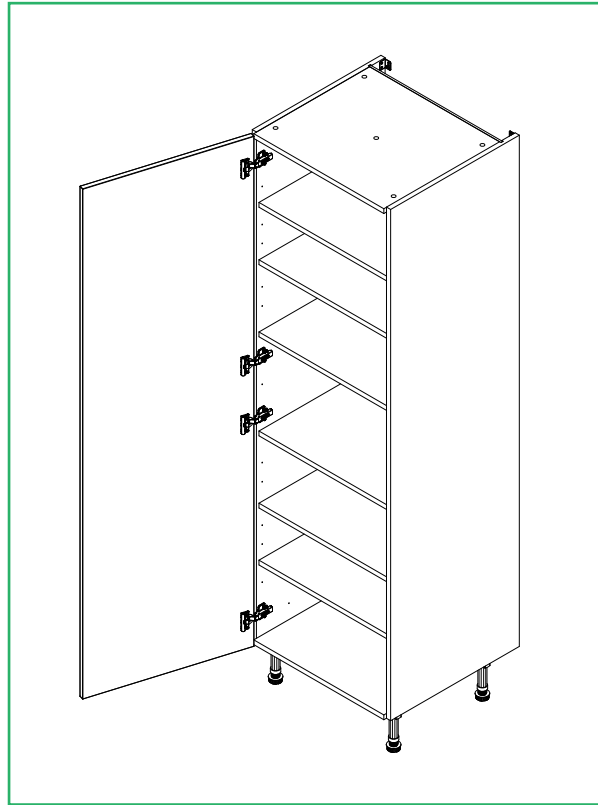
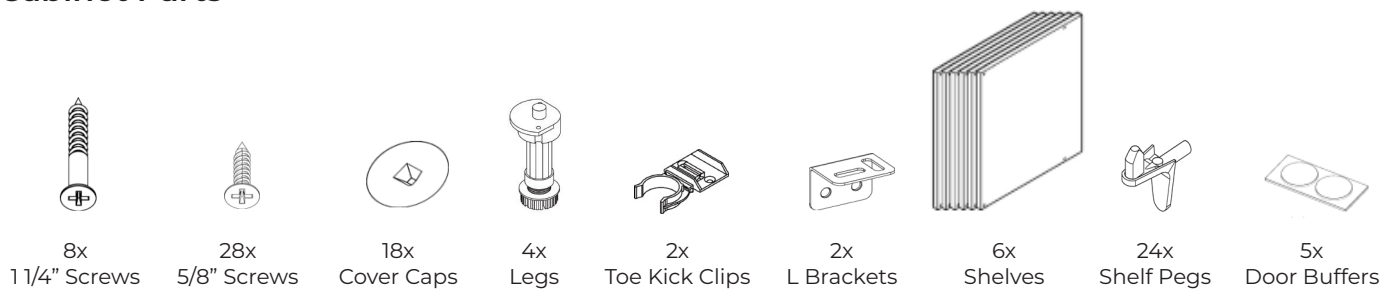


Tower Cabinet

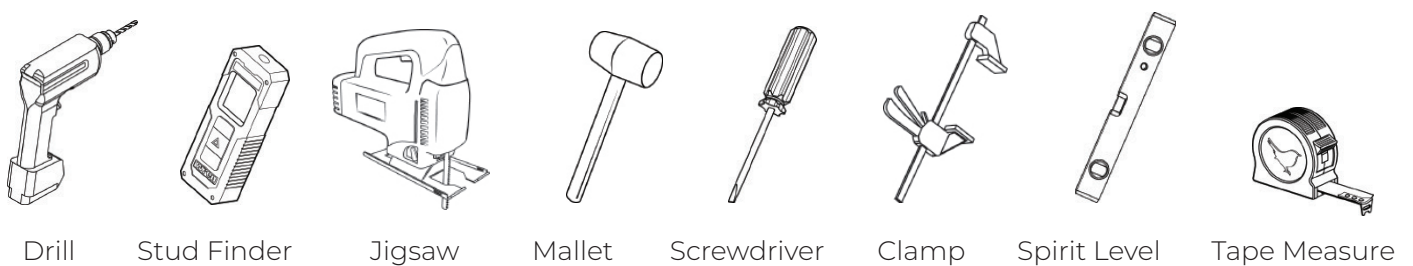
Tower (Door, Solid Top, 4 Legs) - Fitting Guide



Cabinet Parts



Tools Required

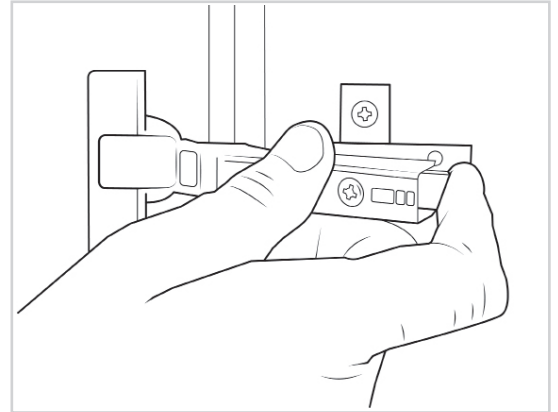


Remember to take care when unpacking. Please keep your workspace clean, clear, and tidy when working. This will help keep all items safe from damage. Any waste cardboard or plastic should be flattened down and placed in the trash can.

A minimum of two people will be needed to lift the cabinet.

Removing the frontals

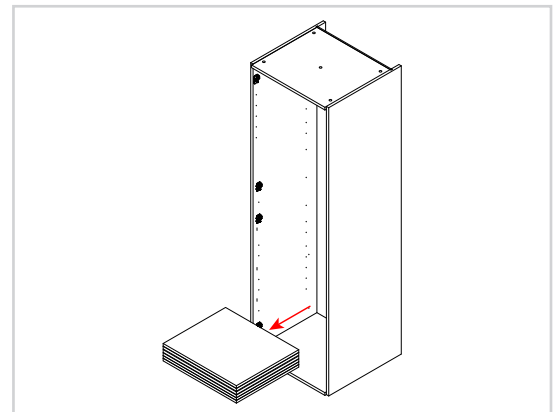
Before installing the cabinet, remove the frontal by pulling the release catch.



Removing the fittings

Remove all content so the cabinet is empty.

All fittings and shelves should be kept on a clean and level surface.

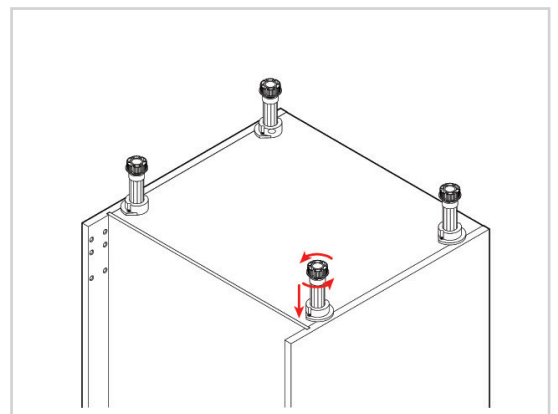


Securing the legs

Secure each of the cabinet legs to the cabinet using **2x 5/8"** screws per leg.

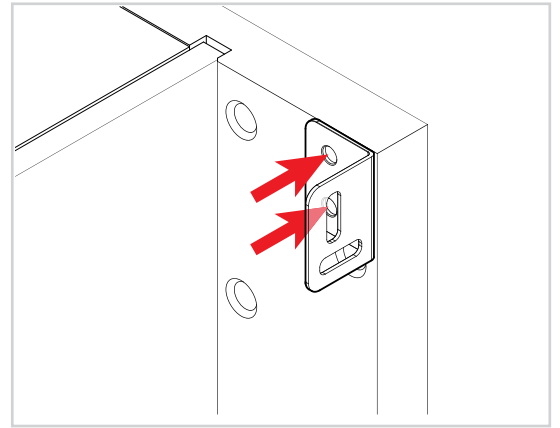
Make sure the legs are positioned as seen in the image to support the end panel.

Set the leg height to **4 9/16"**. The leg height can be adjusted by turning the foot of the leg clockwise or anti-clockwise.



Securing the L-brackets

Secure each of the L-brackets to the rear of the cabinet using **2x 5/8"** screws at each side.

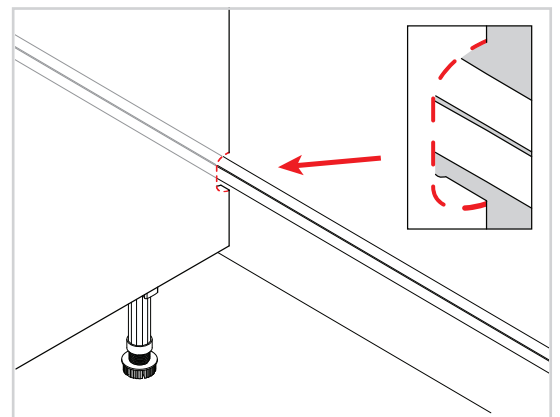


Notching out the side panels (when required)

In order to allow for any horizontal pipework running behind the cabinet, some cabinets will require the back of the cabinet's side to be notched out.

Create a notch for the horizontal pipes at the back of the end panels using a jigsaw.

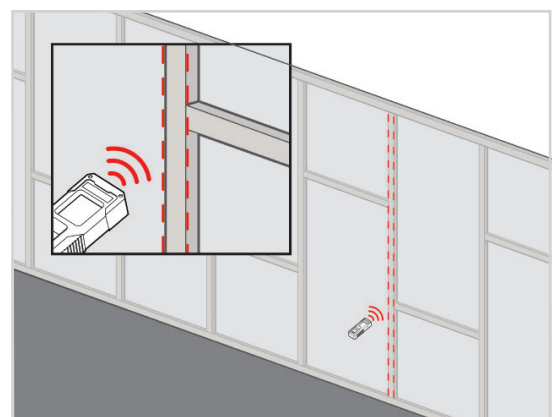
The leg height can be adjusted by turning the foot of the leg clockwise or anti-clockwise.



For help on determining the sort of wall you have, please refer to the "Room Preparation Guide."

Locating the stud

Using a stud finder, locate the studs where the cabinet will be installed and mark the wall where the cabinet will sit.



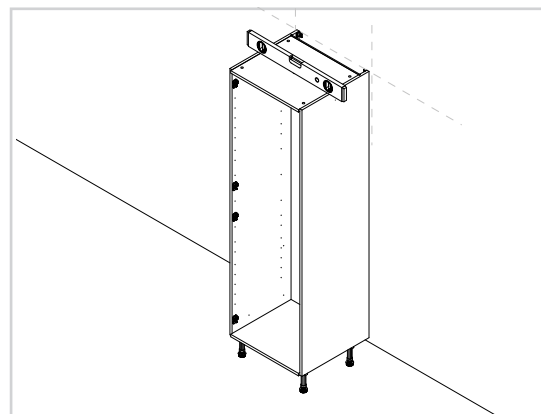
Lifting the cabinet into place

When lifting the cabinet into place, do **not** tilt, as this can damage the legs.

Place the cabinet against the wall and align it with the wall markings that will have been drawn during the room preparation stage.

Use a spirit level to ensure the cabinet is level from front to back, left to right, and diagonally. Adjust the legs if required.

The leg height can be adjusted by turning the foot of the leg clockwise or anti-clockwise.

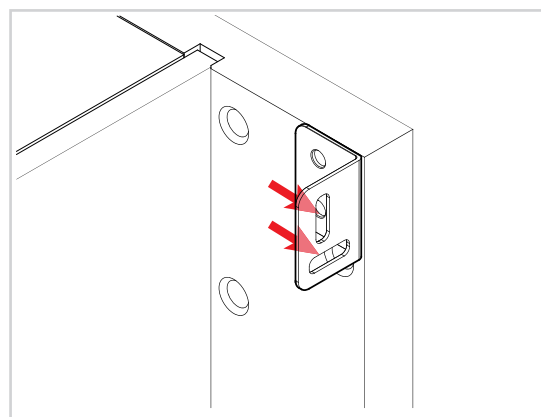


**No screws are provided for attaching the cabinet to the wall.
This is due to variations in wall construction.**

Before drilling into the wall, you MUST check for any hidden services or pipework within the walls.

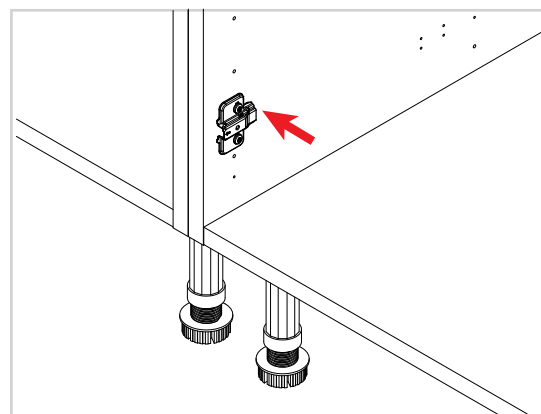
Attaching the tower cabinet to the wall

Fix the cabinet to the wall through the L-brackets, as shown in the image (these fixings are not provided).



Securing adjacent cabinets

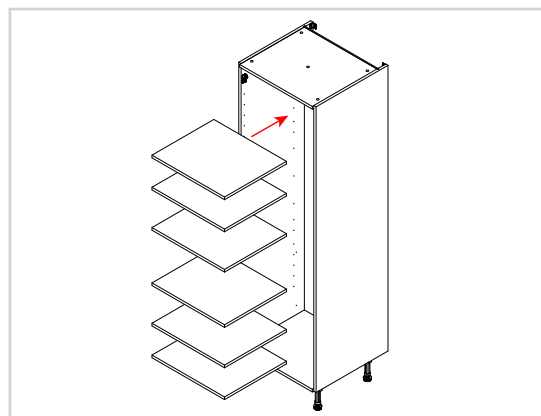
Any adjacent cabinets need to be secured using the **1 1/4"** screws provided. Screw to the rear of both hinge plates and to the rear of the cabinet at the top and bottom.



Placing the shelf into position

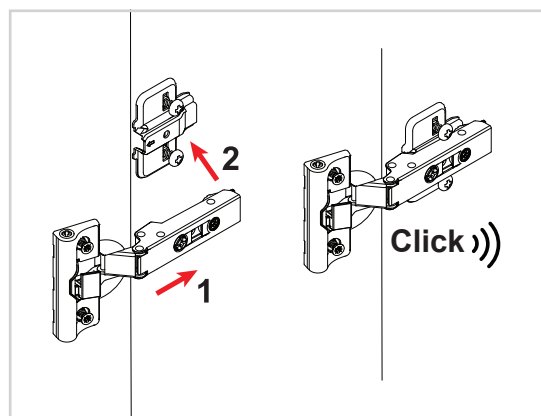
Place the shelves into position so the pin of each shelf peg is inserted into the pre-drilled holes.

The shelves will touch the back panel when installed, if there is a gap between the back panel and shelf, then the shelf has been installed back to front and the shelf needs to be rotated.



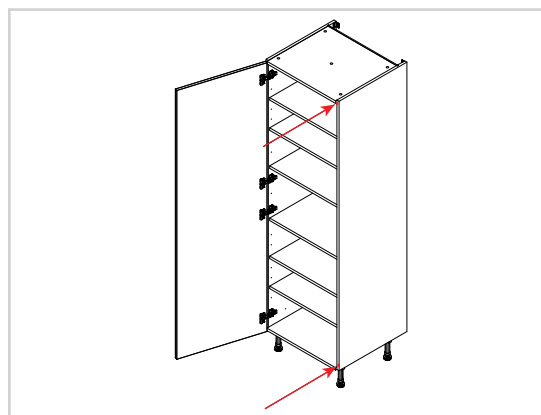
Attaching the frontal

The frontal should be re-attached to the cabinet by clipping the hinges onto the hinge plates. The bar of the hinge needs to be positioned into the hooks on the hinge plate. Then the rear of the hinge is pushed to the hinge plate until it clicks.



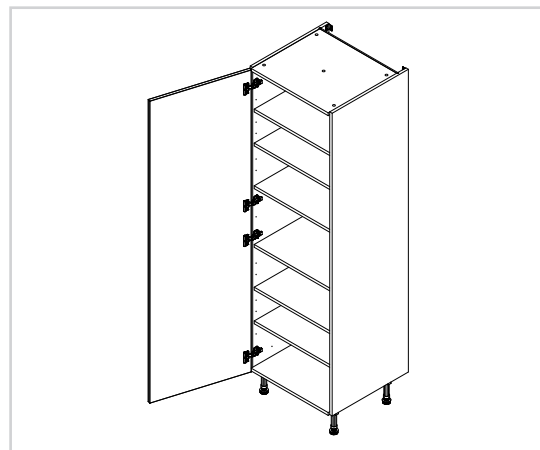
Adding the door buffers

Position **1x** door buffer at the top and bottom corners of the cabinet, as illustrated in the image.



Cleaning the cabinet

Finally, the cabinet should be thoroughly cleaned to remove any debris that may have accumulated during the installation.



Store the toe kick clips and the remaining 5/8" screws.
These will be used later when attaching the toe kick.

For door alignment please review the following installation guide:
Door- Door Hinge Adjustment