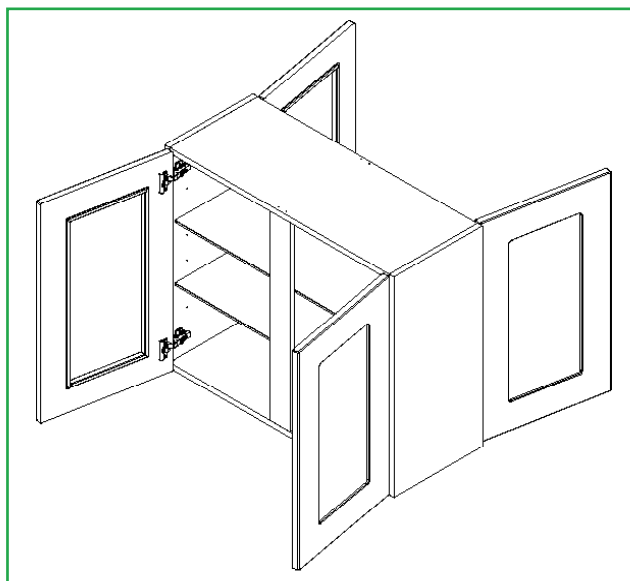


Peninsular Wall Cabinet

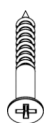
Wall (Door, Solid Top) - Fitting Guide



Unit Parts



9x 19mm
Screws



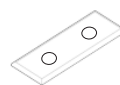
4x 30mm
Screws



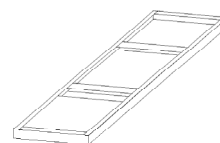
Shelf
Pegs



Cover
Caps



Door
Buffers

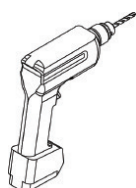


1x
Peninsular Frame



1x
Peninsular Leg

Tools Required



Drill



Screwdriver



Clamp



Spirit Level



Tape Measure



Before installing any wall cabinets, ensure the wall construction is strong enough to support the weight of the fully loaded unit and that appropriate fixings are used. Wall cabinets must be fully secured using all supplied hanging brackets and corner gussets, as specified in the installation guide.

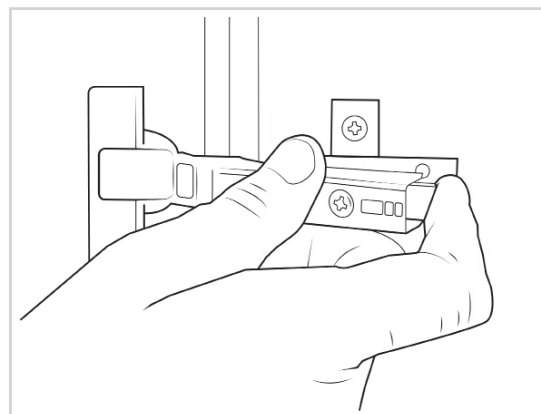
If you are unsure, seek professional advice before proceeding.

Remember to take care when unpacking. Please keep your workspace clean, clear and tidy when working. This will help keep all items safe from any damage. Any un-needed cardboard or plastic should be flattened down and placed in the bin.

A minimum of two people will be needed to lift the unit.

Removing the frontal

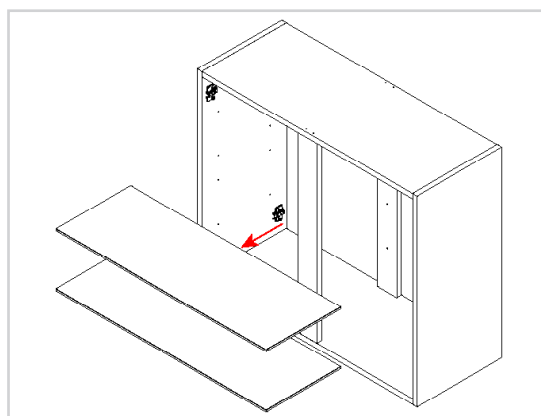
Before installing the unit, remove the frontal by pulling the release catch.



Removing the fittings

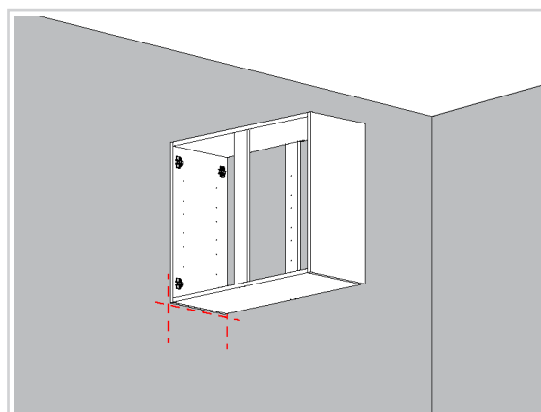
Remove all content so the unit is empty.

All fittings should be kept on a clean and level surface.



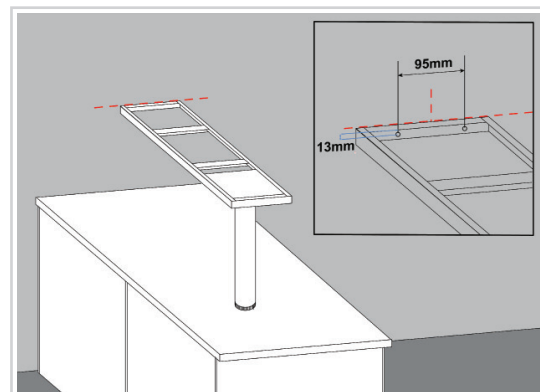
Measure and mark the centre of the unit

While holding the unit against the wall, lightly mark the wall under the unit where it will sit when installed.



Marking the frame location

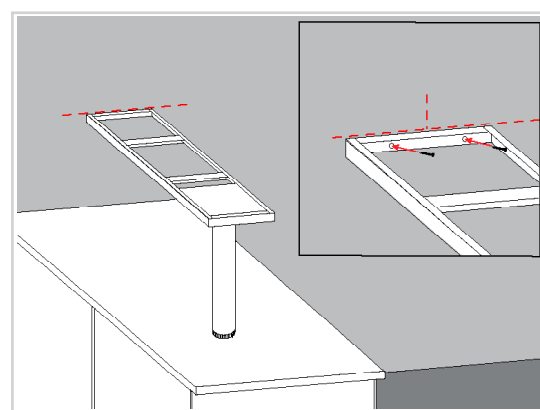
Place the peninsular frame against the wall, with the top of the frame in line with the unit marking, then mark where the frame screws will be installed.



Securing the frame

Position the support leg to under the frame, then adjust it as needed to ensure the frame is level.

Once level, attach the frame to the wall using the appropriate fixings.

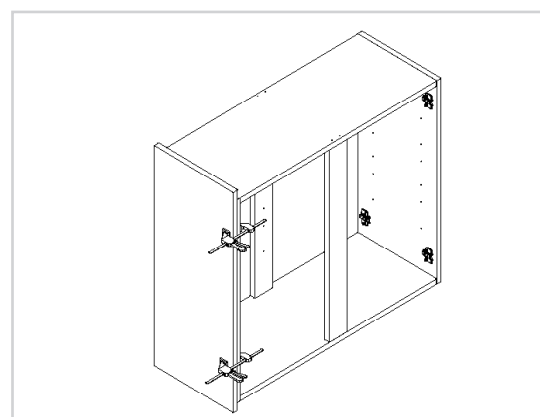


No screws or wall plugs are provided for attaching the peninsular frame to the wall. This is due to variations in wall construction.

Measuring and cutting the decor to size

Clamp the decor panel to the side of the unit, ensuring the decor panel is positioned from the top of the cornice to the underside of the pelmet.

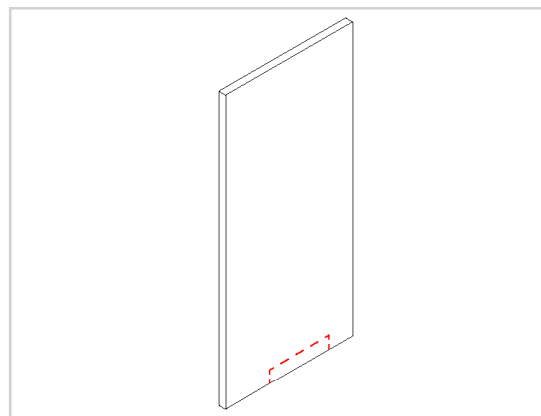
Mark along the decor panel at the top of the unit, and cut the decor panel to size if required.



Notching out the bottom of the decor

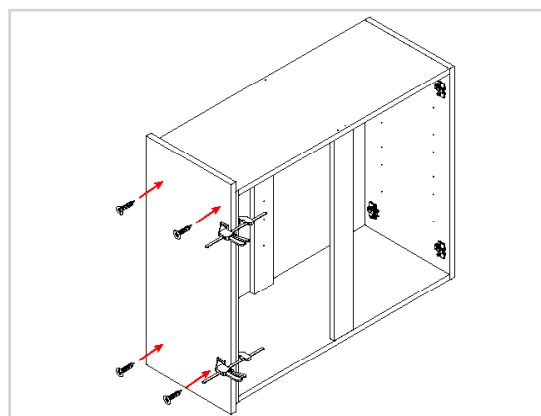
The bottom of the decor panel needs a space notched out this is where the unit will sit on the frame.

The notched out space should be the thickness of the pelmet.



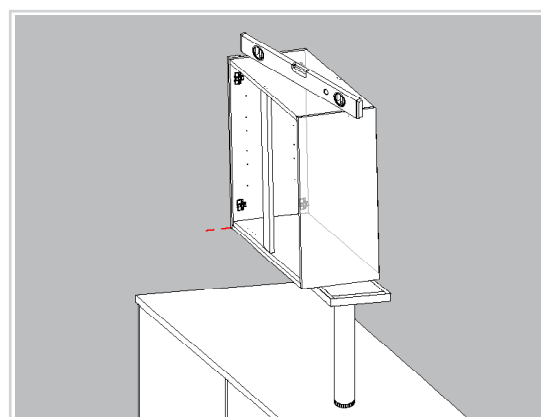
Securing the decor panel

Secure the decor panel to the unit in **2** places at the top of the unit and **2** places at the bottom of the unit using **30mm** screws.



Checking the unit is level

Before installing the unit, hold it against the wall and check that it is level in multiple places using a spirit level.

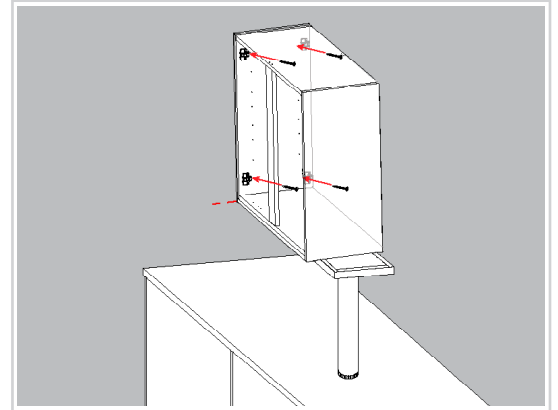


No screws or wall plugs are provided for attaching the unit to the wall. This is due to variations in wall construction.

Fixing the unit to the wall

Secure the unit to the wall in **4** places using the appropriate fixings at the back of each hinge plate.

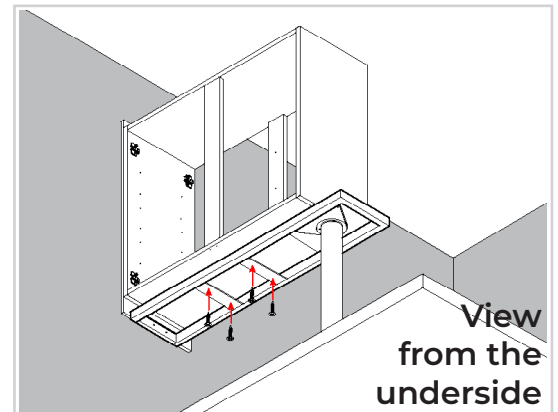
Cover caps can be used to conceal the screw heads.



Attaching the frame to the unit

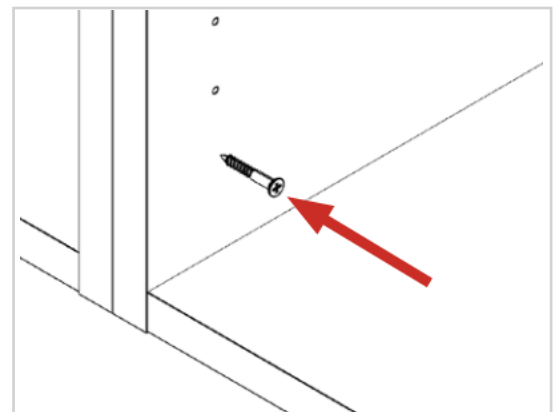
Secure the frame and unit together, using the **19mm** screws provided.

This is done by screwing upwards from the underside of the unit.



Securing adjacent cabinets

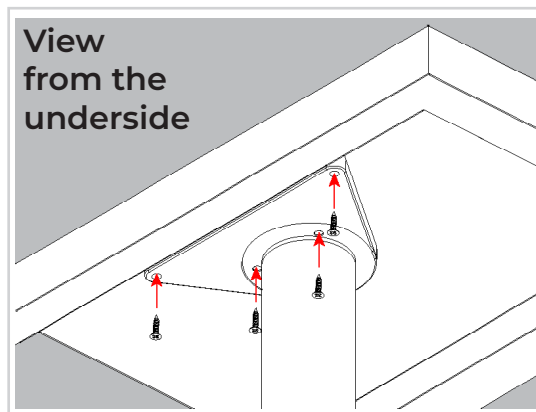
To secure an additional unit, insert **4x** screws inside the unit, **1** just behind each hinge plate, at the top and bottom, using **30mm** screws.



Securing the peninsular leg and frame

Once the units are secured to each other, the peninsular leg can be installed.

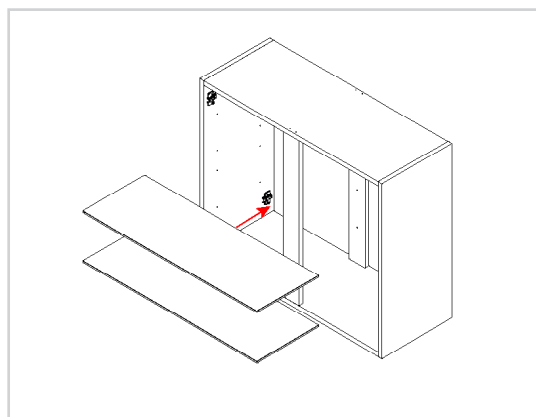
This is done by screwing the **19mm** screws provided into the pre made holes.



Positioning the shelves

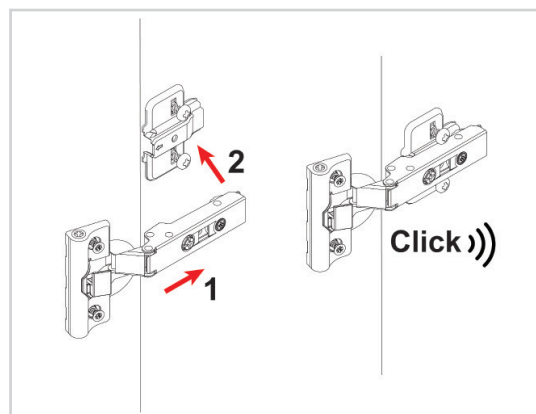
Position the shelf pegs into the pre-drilled holes. Place the shelves into position so the pin of the shelf pegs are inserted into the pre-drilled holes in the shelf.

The shelf should touch the back panel when installed. If there's a gap, rotate the shelf as it may be positioned backward.



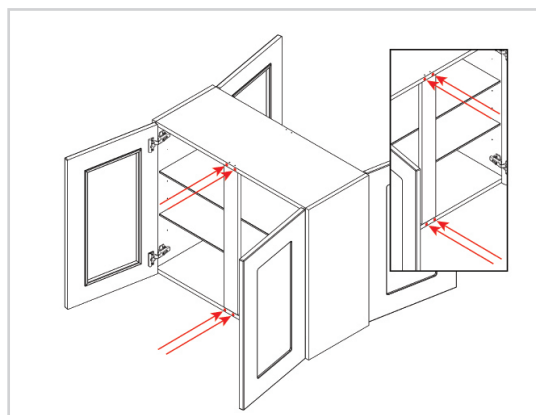
Re-attaching the frontals

The frontals need to be re-attached to the unit. Position the hinge arm on the hooks on the hinge plate, then push the rear of the hinge arm towards the hinge plate until it clicks.



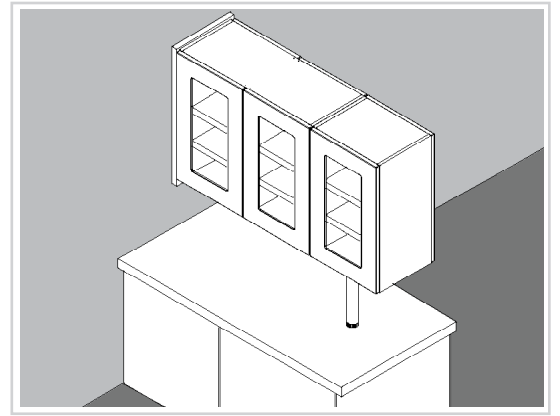
Adding the door buffers

Position the door buffers as shown in the image, ensure to place them where the door meets the carcass.



Finishing Touches

Finally, the unit should be thoroughly cleaned to remove any debris that may have accumulated during the installation.



For door alignment please review the following installation guide:
Door - Door Frontal Hinge Adjustment